



Louth Child and Family Support Network Newsletter

Details of Local Service delivery during COVID – 19
Edition 4 - Updated on the 24th April 2020



To update your service provision please email the Child Family Support Network Coordinators
North Louth Paula McCabe paula.mccabe1@tusla.ie or
South Louth AnnMarie Kidd annmarie.kidd@tusla.ie

MEMO - TUSLA Area Manager Louth Meath

Grainne Sullivan

COVID 19 SERVICE UPDATE

During the current public health Crisis, Bernard Gloster CEO has made a decision to focus on the three critical areas including -

1. Child Protection and Welfare Concerns

Tusla continues to accept and respond to all referrals of reasonable grounds for child protection or welfare concern.

This can be done via the secure portal on the Tusla Website or by contacting us at our:

Dedicated Point of Contact at Tel 046 9098560.

2. Support to Children in Care & After Care

Louth Meath are responsible for 410 children in care, the majority who live with foster families with a small number living in residential centres. We continue to provide support to all of these children and their parents during this difficult time.

We are working on an emergency foster carer plan as the current crisis will potentially have an impact of foster carer availability.

3. Domestic, Sexual & Gender Based Violence Services

Tusla funded Domestic, Sexual & Gender Based Violence Services provide free and confidential services: emergency shelter, legal advocacy, support groups and domestic violence education. The services include-

- Women's Aid Helpline (24 hours) 1800 341900
- Rape Crisis Centre National Helpline (24 hours) 1800 778888
- Drogheda Women's Refuge: Refuge/Support Service Tel: 041 984 4550
- Women's Aid Dundalk: Refuge/Support Service Tel: 042 933 3244
- Meath Women's Refuge: Refuge/Support Service Tel: 046 902 2393
- Men's Aid Ireland (formally AMEN) : Support Service & Confidential Helpline – 01 554 3811 Email: Hello@mensaid.ie

To update your service provision please email the Child Family Support Network Coordinators

North Louth Paula McCabe paula.mccabe1@tusla.ie or

South Louth AnnMarie Kidd annmarie.kidd@tusla.ie

MEMO - TUSLA Area Manager Louth Meath Grainne Sullivan COVID 19 SERVICE UPDATE

While the above three areas have been prioritised, Tusla continue to provide the following -

4. Tusla Education Support Service (tess)

Tess has three strands namely the Statutory Educational Welfare Service (EWS) and the two school support services the Home School Community Liaison Scheme (HSCL) and the School Completion Programme (SCP). Tess continues to provide supports to families during this time and have worked with the Department of Education to ensure that School Lunches have been made available to DEIS schools. There are 4 EWO's who are working remotely at present. They are maintaining contact with the families and are liaising with other professionals who are involved with these families.

Senior Manager: Georgina.traynor@tusla.ie Tel 087-7601955

5. Prevention, Partnership and Family Support

The Family Support Teams are continuing to provide remote support to families & are also supporting their colleagues on their more critical work. The Child and Family Support Networks (CFSN) have developed a community response plan which will now align where appropriate with the county council plans. Some of the key areas being progressed are –

- Audit of current service delivery in the Community and Voluntary Sector to ensure that information is shared across the network
- Targeted families in need of practical support
- Delivering play packs to targeted families & sharing of key resources to children / parents on internet safety / safety card etc.
- The Tusla funded services across Louth Meath continue to provide support in line with Public Health advice

To update your service provision please email the Child Family Support Network Coordinators
North Louth Paula McCabe paula.mccabe1@tusla.ie or
South Louth AnnMarie Kidd annmarie.kidd@tusla.ie

**MEMO - TUSLA Area Manager Louth Meath
Grainne Sullivan
COVID 19 SERVICE UPDATE**

6. Children and Young Peoples Service Committee

The Louth & Meath CYPSC have developed a response plan which will now align where appropriate with the County Council Plans. The key areas being progressed are –

- Audit of Service Delivery in the Statutory Sector to ensure that information is shared across the network
- Service Activity at a local level including work on Hidden Harm, Positive Play, Mental Health Toolkits in including bereavement resources, Physical Activity for children, NVR- Key Messages communique.
- Sharing of information/Communication between CPYSC Members, the PPN and the development of resources on internet safety / safety card
- There is Regional Collaboration on finalising a Critical Incident Protocol.

Tusla also provide Early Years Inspection Services and Adoption Services.

Grainne Sullivan, Area Manager 2 April 2020

Louth Meath Child and Family Support Network Coordination Team



The Louth Meath Child and Family Support Network Coordination team are still open to and receiving PPFS referrals and Meitheal requests. All Meitheal meetings are postponed at present. The CFSN Coordinators are linking with all Lead Practitioners on open Meitheal processes and ensuring they are contacting parents on an ongoing basis, identifying any needs during COVID-19. The Louth Meath CFSN Coordination team will continue to link in by phone and email with CFSN members in their Network. Sharing information constantly, updating service provision and identifying gaps and needs .

Senior Child and Family Support Network Coordinator Louth Meath

Contact: Sandra Stafford

Email: Sandra.Stafford@tusla.ie

North Louth Child and Family Support Network Coordinator

Contact: Paula McCabe

Phone: 087 7218112

South Louth Child and Family Support Network Coordinator

Contact: Annmarie Kidd

Phone: 087 6542139

Tusla Parenting Support Website: www.parenting24seven.ie

To update your service provision please email the Child Family Support Network Coordinators

North Louth Paula McCabe paula.mccabe1@tusla.ie or

South Louth AnnMarie Kidd annmarie.kidd@tusla.ie

Louth Meath Prevention Partnership and Family Support



Louth PPFS Family Support Practitioner Team

The North Louth Family Support Practitioner service delivery is continuing through phone contact with families, on a weekly basis. The allocated PPFS worker will be the contact person for families that are open to the North Louth PPFS team.

If the family are not allocated to a Family Support Worker, please contact the office where a staff member will answer and direct your call to the relevant personnel, or send out a PPFS Referral form. Please leave your name and number on the answering machine if there is no staff available to take your call at that particular time.

North Louth PPFS Springboard Family Support Team

Team Leader: Caroline Bowe

Phone: 042 9351680

South Louth Family Support Team Southgate

Team Leader: Karen Byrne

Phone: 041 2152300

Tusla Parenting Support Website: www.parenting24seven.ie

To update your service provision please email the Child Family Support Network Coordinators
North Louth Paula McCabe paula.mccabe1@tusla.ie or
South Louth AnnMarie Kidd annmarie.kidd@tusla.ie

Louth Children and Young People's Services Committee

Children and Young people's Services committees (CYPSC) are a key structure identified by Government to plan and coordinate services for children and young people in every county in Ireland. The overall purpose is to improve the outcomes for children and young people through local and national interagency working.

Co. Louth CYPSC which was established in August 2010 brings together statutory, community and voluntary providers of services to children and young people. It provides a forum for joint planning and coordination of activity to ensure that children, young people and their families receive improved and accessible services. The role is also to enhance interagency cooperation and to realise the national outcomes set out in Better Outcomes Brighter Futures: the national policy framework for children and young people 2014-2020.

Membership of Louth CYPSC includes representatives from the following sectors and organisations:

Tusla the Child and Family Agency , Local Authority, HSE, LMETB, An Garda Siochana, Reps from C & V sector, 18-24 years old Rep, DKIT, IPPN, Connect Family Resource Centre, North East Regional Drug and Alcohol Task Force ,Louth County Childcare Committee, The Probation Service, DEASP, Louth LEADER Partnership, The Genesis Programme.

Louth CYPSC has recently completed a three year Children and Young People's Plan (CYPP) 2019-2021 for Louth. Further information can be obtained on:

Website: www.cypsc.ie

To update your service provision please email the Child Family Support Network Coordinators
North Louth Paula McCabe paula.mccabe1@tusla.ie or
South Louth AnnMarie Kidd annmarie.kidd@tusla.ie

Craobh Rua Youth Project

Craobh Rua Youth Project in Dundalk are continuing to engage with young people through digital youth work. They are using zoom for programmes and activities. Youth workers are delivering Care and programme packages to their young people to ensure that they continuing to engage at home. Youth workers are using Instagram, snapchat, whatsapp and Facebook to share factual information; daily challenges; competitions and encouraging young people as well as parents to use some relaxation tips to build on their resilience and coping skills.

Contact details

Regional Director - Caroline Flanagan: Caroline@lyf.ie

Craobh Rua Youth Workers: roisin@lyf.ie or Julie@lyf.ie

Workers based in Cooley Peninsula:

erin@lyf.ie or coreproject@lyf.ie (Detached Youth Work)



Child and Family
Support Network

Boomerang Youth Cafe



Boomerang Youth Café are closed in line with the response to COVID 19. Youth workers are in contact young people through phone calls and ZOOM room Private Groups.

Email: Teresa.boomerang@gmail.com

To update your service provision please email the Child Family Support Network Coordinators
North Louth Paula McCabe paula.mccabe1@tusla.ie or
South Louth AnnMarie Kidd anmarie.kidd@tusla.ie



Youth Work Ireland Louth



Community Based projects Southside CYP, Boyne GYDP, CORE- Sign posting & engagement, Irish Youth Music Awards TEAM Louth, Youth Network for Peace & AMPLIFY projects continue to provide on-going support with programmes online using the Digital Youth work model. Within this model Youth workers use the medium of social media like messenger, snapchat, Facebook, Instagram to communicate with young people. 1:1 sessions and group work can be conducted using the Zoom chat app in which multiple young people can join in and receive the support that they require.

At Youth Work Ireland Louth we are striving to provide constant and consistent support for our young people in these uncertain times... online Digital Youth work at its best.

Southside Community Youth Project (GYDP)

Email: monica@lyf.ie or Keith@lyf.ie
denise@lyf.ie

BOYNE Garda Youth Diversion Project

Email: nicola@lyf.ie or

To update your service provision please email the Child Family Support Network Coordinators
North Louth Paula McCabe paula.mccabe1@tusla.ie or
South Louth AnnMarie Kidd annmarie.kidd@tusla.ie

AMPLIFY Peace Project

AMPLIFY are still receiving referrals for young people between 14 - 25. The project provides a platform for young people to select programmes based on their individual needs and interests. AMPLIFY is currently delivering its programmes through Digital Youth Work which includes the following:

- Make up
- Beauty
- Hygiene and Hair.

Our project workers meet the needs of the young people virtually through different resources such as Facebook, zoom, snapchat, Whatsapp, Surveymonkey while also continuing to provide individual support to each young person.

Amplify Youth Project

Email: april.dooley@foroige.ie or shane.ryan@foroige.ie

Cable Project Moneymore

Cable Project are providing ongoing supports via online platforms and phone contact for young people currently linked to Cable project.

Contact details:

Allen O' Donoghue

Email: allen.odonoghue@foroige.ie or

Jenny Deegan

Email: jenny.deegan@foroige.ie

April Dooley

Email: april.dooley@foroige.ie

Shane Ryan

Email: shane.ryan@foroige.ie

Phone: 0860488983

To update your service provision please email the Child Family Support Network Coordinators
North Louth Paula McCabe paula.mccabe1@tusla.ie or
South Louth AnnMarie Kidd annmarie.kidd@tusla.ie



Connect Family Resource Centre



Connect are providing support by phone and are putting updates / information on their social media platforms and on the Connect Facebook page. Connect FRC are delivering hampers within the Connect FRC catchment area to older/vulnerable people who are unable to leave the house and have limited social supports. With consent Connect FRC are passing some of their details onto the Community Guards for additional supports.

Contact details:

Coordinator: Clíodhna coordinatorconnectfrc@gmail.com

Community Development and Family Support Worker: Sinead outreachconnectfrc@gmail.com

Community based Family Support Worker: communityconnectfrc@gmail.com

Update on service provision:

Connect FRC are also offering adolescent and adult counselling by phone or video call. They will also be delivering online courses:

The **'Time for Me' course** is starting next week but is currently full. Contact Connect if interested in any potential future dates.

The Beacon Family Support and Footsteps programme are continuing by phone, social media contacts and emails. The hampers are continuing but only within the catchment area due to demand. We are also running weekly competitions on social media to keep children's and families motivated and active. Keep an eye out on Facebook page!

To update your service provision please email the Child Family Support Network Coordinators
North Louth Paula McCabe paula.mccabe1@tusla.ie or
South Louth AnnMarie Kidd annmarie.kidd@tusla.ie



Connect Family Resource Centre



Further update on service provision:

Connect FRC are offering adolescent and adult counselling by phone or video call. Connect FRC are also delivering online courses, details are:

**Online 6 week Mindfulness Course
starting Wednesday May 6th at 10.30am.**

This will be one hour per week through the Zoom online interactive platform.

Connect FRC staff will support participants to get their Zoom set up and ready to take part! Anyone who is interested can contact Connect FRC or register via Facebook messenger

Contact details:

Coordinator: Clíodhna coordinatorconnectfrc@gmail.com

Community Development and Family Support Worker: Sinead outreachconnectfrc@gmail.com

Community based Family Support Worker: communityconnectfrc@gmail.com

To update your service provision please email the Child Family Support Network Coordinators
North Louth Paula McCabe paula.mccabe1@tusla.ie or
South Louth AnnMarie Kidd annmarie.kidd@tusla.ie



Child and Family
Support Network

Moneymore Afterschool Club

The Moneymore afterschool club are keeping in contact with children and parents through the Moneymore After-school Club Facebook page or by phone.

They provide updates and information relevant to the age group who attend the service.

Contact:

Phone: 086 3707 069

Social Media: Facebook Page



Community House
43 Moneymore
Drogheda

To update your service provision please email the Child Family Support Network Coordinators
North Louth Paula McCabe paula.mccabe1@tusla.ie or
South Louth AnnMarie Kidd anmarie.kidd@tusla.ie



Lifestart Growing Child Programme



The Lifestart Growing Child Programme are providing support through phone calls. They have also put together resource packs with information. This service is available for families of children birth to five years of age.

For Parenting Tips follow the link: <https://www.lifestartfoundation.org/>

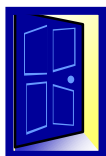
Contact:

Lifestart Co-ordinator: Carol Harkin

Phone: 041 9842078

Email: lifestart@lifedev.ie

To update your service provision please email the Child Family Support Network Coordinators
North Louth Paula McCabe paula.mccabe1@tusla.ie or
South Louth AnnMarie Kidd annmarie.kidd@tusla.ie



The house

Cox's Demesne Youth & Community Project Ltd

Cox's Demesne Youth and Community Project



Cox's Demesne Youth and Community Project in Dundalk are continuing to engage with young people and families they support. This involves face timing young people; one to one mentoring; delivering packs with games and art to their homes and linking in with parents. Cox's YCP are creating an afterschool Facebook page where there will be regular group activities.

The North Dundalk Family Support Hub Worker is in contact with all the families this project supports.

To update your service provision please email the Child Family Support Network Coordinators
North Louth Paula McCabe paula.mccabe1@tusla.ie or
South Louth AnnMarie Kidd annmarie.kidd@tusla.ie



The Invictus Project Muirhevnamor

The Invictus Project in Muirhevnamor, Dundalk are continuing to provide support families in the greater Muirhevnamor area of Dundalk. If there are any families in this area that require a check in, visit or support during COVID 19 please do not hesitate to get in touch with the project.

Contact details:

John Connolly

Phone: 086 2074209

To update your service provision please email the Child Family Support Network Coordinators
North Louth Paula McCabe paula.mccabe1@tusla.ie or
South Louth AnnMarie Kidd annmarie.kidd@tusla.ie

Muirhevnamor Community Youth Project

TEAM Project

The Team Project are continuing to engage and work with Young People. We aim to provide our services through various forms of digital media. All workers are available and can be contacted through the use of social media, phone and email. Group chats and 1:1 sessions are being carried out regularly and we are distributing Easter packs to all our young people containing all information and how to contact us. We hope to promote positivity through our social media posts and to keep all Young people up to date on the current situation. We also share links to various local organisations that may be of benefit.

After School Services

The Community Afterschool Service has continued to keep in contact with parents through text and have delivered factual HSE information packs to all families offering support and coping methods through this pandemic.



To update your service provision please email the Child Family Support Network Coordinators
North Louth Paula McCabe paula.mccabe1@tusla.ie or
South Louth AnnMarie Kidd annmarie.kidd@tusla.ie



Rape Crisis North East Centre



The Rape Crisis Centre **Freephone** helpline number is open those who need access to crisis counselling and support.

Monday – Friday 10.00am – 4.00pm

Contact: 1800 21 21 22

For existing clients of the Rape Crisis Centre:

The Therapist will make contact to arrange counselling appointments over the phone.

Contact: manager@rcne.ie for further information.

For New Clients:

To arrange an appointment email manager@rcne.ie or **Phone** 1800 21 21 22

To update your service provision please email the Child Family Support Network Coordinators
North Louth Paula McCabe paula.mccabe1@tusla.ie or
South Louth AnnMarie Kidd annmarie.kidd@tusla.ie



ISPCC



The ISPCC office in Drogheda is currently closed to the public. ISPCC support staff are currently working and offering ISPCC services remotely. ISPCC staff have work mobiles which are on during working hours. ISPCC staff are contactable on their work phones which any potential referrer can contact during working hours to discuss cases, concerns or referrals. All clients and their families open to the service currently receive regular weekly contact via phone and skype to maintain the support and intervention work developed to date. ISPCC staff have access to work emails through our remote access system.

Contact details:

Tina Russell

Phone: 087 433 0441

Email: tina.Russell@ispcc.ie

Robert Byrne

Phone: 087 140 9276

Email: robert.byrne@ispcc.ie

The ISPCC have a national support line. This service is for parents and young people to call regarding any concerns they might have. The contact number changes daily and can be found on the ISPCC website.

Website: www.ispcc.ie.

Childline is Ireland's 24-hour national listening service for all children and young people (under the age of 18) in Ireland. It is private, confidential and non-judgemental and can be contacted for free from anywhere in Ireland.

Phone: 1800 66 66 66 (24 hours a day)

Text 50101 (10am – 4am daily)

Chat online at Childline.ie (10am – 4am every day).

Childline calls, webtexts and messages are still up and running and will remain open during the crisis.

To update your service provision please email the Child Family Support Network Coordinators

North Louth Paula McCabe paula.mccabe1@tusla.ie or

South Louth AnnMarie Kidd annmarie.kidd@tusla.ie

CHILD ABUSE DOES NOT STOP IN A PANDEMIC

#NeverGiveUpOnAChildEver

HOZIER

FRIDAY

**DANNY
O'REILLY**

SATURDAY

**WILD
YOUTH**

SUNDAY

KODALINE

MONDAY

**DERMOT
KENNEDY**

TUESDAY

**PICTURE
THIS**

WEDNESDAY

**GAVIN
JAMES**

THURSDAY

AND MORE TO BE ANNOUNCED

7pm

EVERY NIGHT

INSTAGRAM LIVE STREAMS EVERY NIGHT

DONATE NOW AT [ISPCC.IE/DONATE-NOW](https://ispcc.ie/donate-now) TO DONATE €4 TEXT **CHILDHOOD** TO 50300

ISPCC WILL RECEIVE A MINIMUM OF €3.60. SERVICE PROVIDER: LIKECHARITY



Mental Health Ireland



Mental Health Ireland have a range of information available useful links on www.mentalhealth.ie

Mental Health Ireland staff are working from home so you can contact them by email directly - <https://www.mentalhealthireland.ie/our-staff/> or via info@mentalhealthireland.ie

The HSE Mental Health Information line is **1800 111 888**

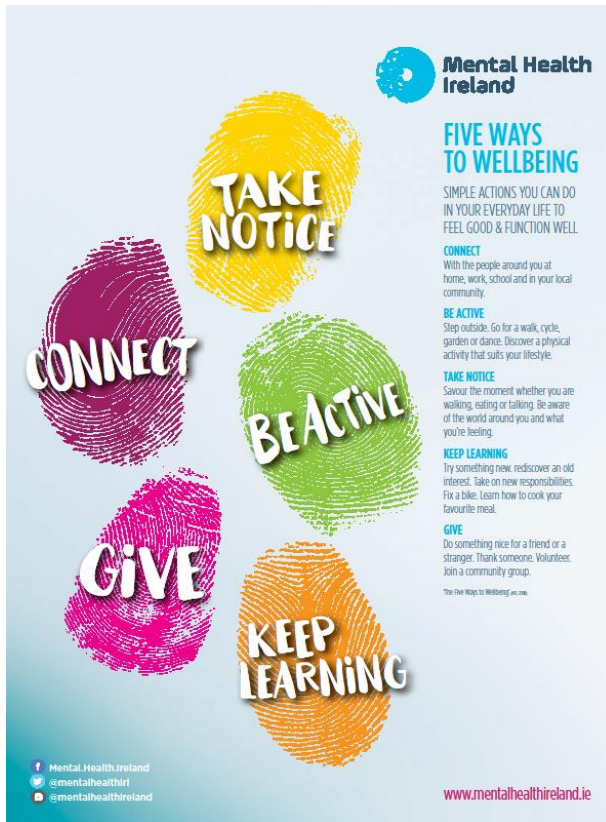
Samaritans helpline 116 123 or email jo@samaritans.ie

Mental Health Ireland urges people to stay connected and informed amid Covid 19: <https://www.mentalhealthireland.ie/news-events/wellbeing-covid19/>

Tips for keeping your mental health balanced during this time: <https://www.youtube.com/watch?v=sE5yTNIHBmw>

To update your service provision please email the Child Family Support Network Coordinators
North Louth Paula McCabe paula.mccabe1@tusla.ie or
South Louth AnnMarie Kidd annmarie.kidd@tusla.ie

Five ways to wellbeing poster



<https://www.mentalhealthireland.ie/wp-content/uploads/2019/11/MHI-Five-Ways-to-Wellbeing-Poster.pdf>

24/04/2020

Five ways to wellbeing leaflet



<https://www.mentalhealthireland.ie/wp-content/uploads/2019/11/MHI-5-ways-to-wellbeing-leaflet.pdf>

To update your service provision please email the Child Family Support Network Coordinators
North Louth Paula McCabe paula.mccabe1@tusla.ie or
South Louth AnnMarie Kidd annmarie.kidd@tusla.ie



Child and Family
Support Network



Mental Health Supports

Shine Northeast

Shine in the Northeast will continue to provide support during COVID – 19.

Contact: Derek Pepper, Regional Development Officer

Phone: 086 8525422

Email: northeast@shine.ie

Shine's support services are available to anybody over 18 years of age.

SOSAD Dundalk

SOSAD offices are currently closed for face to face appointments and walk in's. The 24 hour helpline is still open and will continue to be open throughout the COVID -19 Pandemic. SOSAD are advising people to ring as often as needed.

Phone: 042 9327311.

Samaritans

Call **FREE** day or night: 116 123

Email: jo@samaritans.ie

Website: www.samaritans.ie

To update your service provision please email the Child Family Support Network Coordinators
North Louth Paula McCabe paula.mccabe1@tusla.ie or
South Louth AnnMarie Kidd annmarie.kidd@tusla.ie



Spunout



SpunOut.ie is Ireland's youth information website created by young people, for young people. On SpunOut.ie they provide information on a range of different topics broken down into sections; education, employment, health, life and opinion. Their vision is to help create an Ireland where young people aged between 16 and 25 are empowered with the information they need to live active, happy, and healthy lives.

If a young person; aged between 16 and 25, is having a tough time and needs to tell someone, they can text anonymously to talk it out with a trained volunteer. They are happy to talk about absolutely anything that's bothering a young person, and they can help you explore your options. Get anonymous support 24/7 with their text message support service. Connect with a trained volunteer who will listen, and help to move forward feeling better.

Chat to them now.

Text **SPUNOUT** to **086 1800 280** to get started.

Standard SMS rates may apply

Find factual and up to date news on the COVID-19 pandemic, as well as advice and factsheets to help young people stay happy and healthy during this time: <https://spunout.ie/news/category/covid-19>.

Website: www.spunout.ie

To update your service provision please email the Child Family Support Network Coordinators
North Louth Paula McCabe paula.mccabe1@tusla.ie or
South Louth AnnMarie Kidd annmarie.kidd@tusla.ie

Jigsaw Support Line



The Jigsaw support line is now up and running

This new initiative was developed as part of their Covid-19 response. It will provide free mental health support and advice to young people aged 12 to 25 years old, and parents or concerned adults who live in the Republic of Ireland.

You can also get in touch with Jigsaw clinicians by text message or email and ask for a return support call.

Contact details:

Freefone 1800 JIGSAW (544 729)

Opening Hours

Monday to Friday, 1pm- 5pm

Text 086 180 3880

text "call me" with your preferred day and time for a call, Monday to Friday, 9am to 5pm

Email: help@jigsaw.ie

you can email anytime, and clinicians will be responding from Monday to Friday, 9am to 5pm.



MENTAL HEALTH MOVEMENT IN IRELAND

Grow Mental Health Recovery



All Grow weekly support groups are postponed until further notice however if you need support please contact Grow

Phone: 1890 474 474

Email: info@grow.ie

Grow Mental Health Recovery have launched an initiative entitled 'Creating Hope and Staying Positive while facing Covid-19'. The idea is that we are facing the reality that this is a long-term process and we need advice that will sustain us over the coming weeks. The content, which includes podcasts, relaxations techniques and practical tasks, is designed to be relevant, reassuring and fun.

Week 1: Now available on their website at <https://grow.ie/category/covid-19-support/>.

Week 2: 'Staying Connected in Isolation' can be accessed at <https://grow.ie/week-2-connecting-in-isolation/>.

Week 3: 'Adopting a Positive Outlook' can be accessed at <https://grow.ie/category/covid-19-support/>.

Week 4: 'Routine, Routine, Routine' can be accessed at <https://grow.ie/category/covid-19-support/>

To update your service provision please email the Child Family Support Network Coordinators

North Louth Paula McCabe paula.mccabe1@tusla.ie or

South Louth AnnMarie Kidd annmarie.kidd@tusla.ie



Feidhmeannacht na Seirbhíse Sláinte
Health Service Executive

Child and Adolescent Mental Health Services Louth



Child and Family
Support Network

Child and Adolescent Mental Health Service in Louth are continuing to provide support through telephone consultation with young people and parents. The teams are also sending out information to individual clients based on their needs.

Child and Adolescent Mental Health Service continue to deal with urgent referrals as they come in to the service.

Louth Child and Adolescent Mental Health Services

The Grey Building

Child and Family Centre, Dublin Road

Drogheda, Co. Louth


Phone: 041 9893300

To update your service provision please email the Child Family Support Network Coordinators
North Louth Paula McCabe paula.mccabe1@tusla.ie or
South Louth AnnMarie Kidd annmarie.kidd@tusla.ie

Louth GAA COVID 19 Response



Child and Family
Support Network



COVID-19 Response Louth Club Contacts

North Louth Region

Clan Na Gael - Niall Weldon - 0872956573
Cooley Kickhams - Brian Rafferty - 0851684655
Na Piarsigh - Gerry McGee - 0877500414
Roche Emmets - Aine Rice - 0876313429
St. Patricks - Padraic O' Connor - 0872397137

East Louth Region

O' Connells - Aidan Murtagh - 0872579625
Anthony Agnew - 0879272863
Brian Kearney - 0872841895
St. Kevins - Bob Doheny - 0860489775

South Louth Region

Glen Emmets - Joey Carolan - 0878339568
Catrina Tuite - 0863203675
Jack Carolan - 0872316722
Hunterstown Rovers - Amanda Lane - 0894248931
Mattock Rangers - Terry Donegan - 0876405305
Mark Leacy - 0868570564
Earnan Roche - 0879872874
Naomh Mairtin - Linda Donaghoe - 0861936349
Newtown Blues - Gillian Harte - 0877951477
Orlaith Nugent - 0868140876
Oliver Plunketts - Jeff Finnegan - 0876409549
St. Nicholas - Des McDonald - 0862063113
Wolfe Tones - Patrick Fanning - 0874681644


West Louth Region

Glyde Rangers - Anthony Nulty - 0877639043
Kilkerley Emmets - Cathal Bellew - 0858783433
Naomh Malachi - Aidan Fee - 0858672406
Donna Daly - 0863770718
Emma McArdle - 0874364816
Roche Emmets - Aine Rice - 0876313429
Sean McDermotts - Kevin Carroll - 0871344157
St. Brides - Niamh Sweeney - 0864017098
St. Mochtas - Orla O'Neill - 0879800284
Niamh Kirk - 0833653921
Aidan Murtagh - 0872579625
Westerns - Frank Scriven - 0877979878

NATIONAL SUPPORT HELPLINE

HOW WE OPERATE

- 1 REQUEST HELP VIA HELPLINE
TEXT 086 180 0256
CALL 021 237 7809
- 2 REQUEST IS CATEGORISED AND ASSIGNED TO REGIONAL COORDINATOR (EXAMPLE - MEMBER OF THE PUBLIC NEEDS GROUPEERS DELIVERED - COLLECT & DROP OFF)
- 3 COORDINATOR ASSIGNS TICKET TO VOLUNTEER/GROUP (LOCAL AUTHORITY TEAM, CHARITIES, LOCAL VOLUNTEER GROUP)
- 4 SUPPORT REQUEST IS CLOSED



To update your service provision please email the Child Family Support Network Coordinators
North Louth Paula McCabe paula.mccabe1@tusla.ie or
South Louth AnnMarie Kidd annmarie.kidd@tusla.ie



Na Piarsaigh CPG

COVID - 19

Community Support



In light of recent events Na Piarsaigh CPG have put together a local support group to help out those most affected by the COVID-19 Pandemic in the Holy Family Parish.

If you are aware of someone who is vulnerable, elderly or isolated and may need assistance, we as a club can help provide access to groceries, medication, fuel ect.

In times like these we need to stick together as a community and look out for those who are most at risk. This is a perfect example of how we can come together in times of need and where the GAA and other community organisations prove their worth to the members and communities that have supported them along the way!

You can avail of this service either by contacting this social media page or contacting: Gerry McGee - 087 7500 414 or Peter Begley - 087 231 0218

To update your service provision please email the Child Family Support Network Coordinators
North Louth Paula McCabe paula.mccabe1@tusla.ie or
South Louth AnnMarie Kidd annmarie.kidd@tusla.ie



Family addiction Support Network

THE HUB, LIOS DUBH, ARMAGH ROAD, DUNDALK, CO. LOUTH A91 T668

Charity No. 20141677 Phone: 042 9355251 / 087 9046405

Email info.fasn@gmail.com



In response to the Covid19 pandemic, FASN are changing how they operate and are developing new and innovative ways of supporting families affected by a loved one's substance misuse.

In these extremely difficult times we are very aware of the challenges our service users will be dealing with, with this in mind our volunteers are continuing to provide vital service's in the form of:

- One to One Support sessions via phone and video calls
- 5 Step Brief Intervention via phone and video calls
- Health & Wellbeing support through Facebook (FASN)
- Counselling via phone and video calls
- Family Support Groups- future development of virtual peer led family support groups via phone and video calls

FASN are currently signing up to the ALCATEL-LUCENT RAINBOW App by providing organisations and enterprises with the services that enable staff to work remotely from safe locations, through the Rainbow cloud-based communication and collaboration platform. Customers' data is protected through the ISO-27001 certification, the international standard for cloud security and has GDPR* compliance and strict data confidentiality agreements.

Click to view details: <https://conversation.al-enterprise.com/LP=7715>





Culture Connect



The Culture Connect centre in Drogheda is closed to the public. Culture Connect continue to support and advise clients and migrant families through telephone, email and social media.

Culture Connect have a new online support on ESOL classes. There will be extra learning support for secondary students which will commence next week.

Contact details:

Coordinator: Flora Okobi

Phone: 087 1314312 or 083 1309244

Email: cultureconnect@ymail.com

Website: www.cultureconnect.ie

Monday – Friday: 10am to 5pm

Turas Counselling Centre



COVID-19 Update

TURAS IS CURRENTLY OPEN AND ACCEPTING REFERRALS.

Turas is a Dundalk based community addiction service providing one-to-one, group and other supports to people both active in addiction and those in recovery.

If you are currently struggling with an addiction or are in recovery from an addiction and fearful of a relapse please contact us and we can provide regular support to you.

Please call 042 9338221 or email info@turascounselling.ie to get support.

One of our team will be in touch within 24 hours to offer you a telephone assessment. All of our supports are currently being offered over the phone.

-Nicki and the Turas team

turas

We're here for you at every
stage of your journey

CHY 22271

To update your service provision please email the Child Family Support Network Coordinators
North Louth Paula McCabe paula.mccabe1@tusla.ie or
South Louth AnnMarie Kidd annmarie.kidd@tusla.ie



Feidhmeannacht na Seirbhíse Sláinte
Health Service Executive

Substance Use Support for Teens (SUST)



Child and Family
Support Network

The substance use support service for teens are avoiding face to face sessions with young people however they may still see some young people if there is significant concerns. However there is a challenge in their ability to access locations as some youth services and schools where they used to see young people are closed.

Most of their contact is becoming phone contact as a result. Face to face sessions will only be possible in their main premises at:

Drogheda Industrial Park, Donore Road, Drogheda, Co. Louth.

Families can continue to contact:

Philip James 087 3752760 or Lorraine Wright 087 173 2088.

To update your service provision please email the Child Family Support Network Coordinators
North Louth Paula McCabe paula.mccabe1@tusla.ie or
South Louth AnnMarie Kidd annmarie.kidd@tusla.ie

Barnardos National Parent Support Service - Response to Covid-19 Pandemic

Barnardos provides practical and emotional supports to children and parents in its 41 centres, in families' own homes, through the school environment, and within communities across Ireland. Last year we worked with over 20,000 children, young people and their families. Given our expertise in providing a wide variety of supports to families and children, Barnardos have launched a national telephone and email support service for parents in response to the challenges they are facing during the Covid-19 pandemic.



The government's response to Covid-19 has meant that normal routines and sources of support are currently unavailable to many families. Through our dedicated telephone and email support service Barnardos staff can provide support and advice to parents on the following issues:

- How to talk to your children about the corona virus
- Setting a good routine
- Managing children's behaviours and sibling dynamics
- Managing aggression and family discord
- Home schooling/managing school expectations.
- Fostering natural learning opportunities in the home
- Healthy eating
- Accessing fun and educational activities for families and individual children
- Managing your child's worries
- Self-care for parents
- Helping parents manage their own worries and anxieties
- Managing children's online activity

Phone: 1800 910 123 between 10.00am and 2.00pm Monday to Friday

Email: parentsupport@barnardos.ie.



To update your service provision please email the Child Family Support Network Coordinators
North Louth Paula McCabe paula.mccabe1@tusla.ie or
South Louth AnnMarie Kidd annmarie.kidd@tusla.ie



Women's Aid Dundalk



Women's Aid Dundalk continue to operate during COVID 19. They are adapting their service to still meet the needs for women and children during this time when the risk of domestic abuse is very much heightened. Contact can be made through their Facebook page, Twitter and the following contact details.

Contact details:

24 hour helpline: 042 9333244

Email: info@womensaidlk.net

Please visit Women's Aid Dundalk Facebook page. Updates regarding their service provision will be updated here regularly.

- Women's Aid continue to provide refuge support.
- Their charity shop No 11 Accessible's is closed until further notice.
- For Court Clinic visit arrangements please visit the Women's Aid Facebook page
- The Playroom Project has closed until further notice.
- Play therapy has stopped until further notice.
- One to one, face to face services have stopped until further notice. They are providing telephone support.

To update your service provision please email the Child Family Support Network Coordinators
North Louth Paula McCabe paula.mccabe1@tusla.ie or
South Louth AnnMarie Kidd annmarie.kidd@tusla.ie

Safe Ireland is working closely with its domestic violence service members around the country to ensure that women and children are kept fully informed about the services and refuges that are available to them throughout this time of national emergency. Safe Ireland will be keeping a rolling update on services and this information can be found at:

<https://www.safeireland.ie/get-help/where-to-find-help/>

The Department of Justice and Equality have launched a Public Awareness campaign on Domestic Violence during COVID 19 information on this campaign can be found at:

<https://www.stillhere.ie/>

“Safe Ireland welcomes the new information and awareness campaign. Our 38 member domestic violence services throughout the country are open and operating. They are doing everything they can to provide the essential and professional support that women and children need at this time of containment, when home is not a haven for all.”

Sharon O’Halloran, Co-CEO of Safe Ireland

Welcome to Men's Aid Ireland



Men's Aid Ireland formerly known as Amen, is the only dedicated national service supporting men and their families experiencing Domestic Violence in Ireland. Our professional and qualified support team have years of experience in supporting men and families experiencing domestic abuse.

Men's Aid Ireland provide:

- Legal clinic – Information about Safety Orders, Protection Orders, Barring Orders.
- Counselling – By Telephone.
- Counselling – Face to Face.
- Court Accompaniment – Dolphin House, Dublin (Family Courts).
- OutReach Clinics in Monaghan, Cavan, Louth and Meath.
- Certified Training – All areas of domestic abuse including coercive control.

National Confidential Helpline: 01 554 3811

Email: hello@mensaid.ie

Website: <https://www.mensaid.ie/>

To update your service provision please email the Child Family Support Network Coordinators
North Louth Paula McCabe paula.mccabe1@tusla.ie or
South Louth AnnMarie Kidd annmarie.kidd@tusla.ie



Male Advice Line

Advice & Support for Male Victims
of Domestic Abuse

Male Advice Line



Child and Family
Support Network

The Male Advice Line is managed by the Men's Development Network and offers confidential advice and support to Male victims of domestic violence and abuse over the phone. The service is staffed by fully qualified Counsellors and Psychotherapists who have been specifically trained in this area of work. Callers can be assured that at all times they will be treated with the utmost respect and confidentiality. The core objective is to ensure you are safe and that you can talk through what is happening to you without fear, shame or blame.

Phone: 1800 816 588

Monday 10am-6pm

Tuesday 12noon- 8pm

Wednesday 10am-6pm

Thursday 12noon-8pm

Friday 2pm-6pm

Website: <https://mens-network.net/male-advice-line/>

'It is very important we get the message out that support services are available for all victims and survivors of domestic abuse. It is fantastic that all services are working together with the Department to get this critical message out there.'

Seán Cooke, the Male Advice Line

To update your service provision please email the Child Family Support Network Coordinators
North Louth Paula McCabe paula.mccabe1@tusla.ie or
South Louth AnnMarie Kidd annmarie.kidd@tusla.ie



Support Services and Helplines

HSE COVID 19 Helpline

Callsave: 1850 24 1850 or **Phone:** 041 6850300

Tweet: @HSELive

Open: Monday to Friday: 8am - 8pm Saturday and Sunday: 9am - 5pm

HSE Helpline for pregnant Women

The HSE have set up a dedicated helpline for pregnant women who have questions and concerns about COVID 19

Contact: 086 7756961 Monday – Friday 10am – 3pm

Gary Kelly Cancer Support Centre

Centre is currently closed but are still providing a helpline support service to anyone affected by cancer. Telephone Support Service.

Contact: 086 8202447 / 086 3870277 Monday – Friday 11am – 3pm

Email: aileen@gkcancersupport.com or ann@gkcancersupport.com

Pieta House Suicide Bereavement Liaison Service

The Pieta House Suicide Bereavement Liaison Service continues to be available however it is only phone support at present.

Contact person for Louth Meath: Catherine Brazil

Contact number: 085 7380444

To update your service provision please email the Child Family Support Network Coordinators
North Louth Paula McCabe paula.mccabe1@tusla.ie or
South Louth AnnMarie Kidd annmarie.kidd@tusla.ie

Support Services and Helplines



Dundalk Counselling Centre

Dundalk Counselling Centre is closed for all one to one therapy sessions until further notice. The Centre is keeping in touch over email and messenger with any clients looking for direction to available remote services, we are not providing a remote service.

Centre Manager: Elizabeth McGuckin

Contact: 042 9338333

Save Our Homeless Dundalk

Aiding the homeless, elderly and anyone that needs support in Dundalk.

Contact: 089 4627311.

Dunnes Stores Supporting Cocooning shopping hours

Dunnes stores are continuing to offer priority shopping hours for carers or anyone who is shopping on behalf of an elderly person or neighbour. The hours are still a priority for 60 – 70 year olds who have not been instructed to cocoon.

Priority Hours: 11am – 1pm daily

To update your service provision please email the Child Family Support Network Coordinators
North Louth Paula McCabe paula.mccabe1@tusla.ie or
South Louth AnnMarie Kidd annmarie.kidd@tusla.ie

Support Services and Helplines



Louth Volunteer Centre

Louth Volunteer centre are urging local organisations who are seeing an increase in demand for their services or a potential drop in their ability to deliver their service to contact them for support in recruiting volunteers.

Website: www.volunteerlouth.ie

Manager: Grainne Berrill

North Louth Volunteer Centre Services:

Contact person: Kayleigh Mulligan

Email: info@volunteerlouth.ie or **Phone:** 086 0431379.

ALONE

Supports older people to age at home.

Helpline: 0818 222 024 open 8.00am – 8.00pm

Louth Telephone: 042 933 0103

Email: hello@alone.ie

Outcomers Dundalk

Outcomers are continuing to offer support via phone, email, social media and virtual youth groups.

Contact: Lorna Costello

Phone: 086 1625030

Email: youth@outcomers.org

To update your service provision please email the Child Family Support Network Coordinators
North Louth Paula McCabe paula.mccabe1@tusla.ie or
South Louth AnnMarie Kidd annmarie.kidd@tusla.ie

Support Services and Helplines

The logo for LGBT Ireland, featuring a rainbow-colored circular emblem and the text "LGBT IRELAND".

NEED TO TALK?
Help is just a phone call away

LGBT Helpline 1890 929 539 Monday to Thursday: 6:30pm - 10pm Fridays: 4pm - 10pm Saturday and Sunday: 4pm - 6pm	Women's Aid 1800 341 900 24hrs 7 days a week Text Service available daily on 087 959 7980
ALONE Supporting older people to age at home 0818 222 024 COVID-19 helpline for older people Everyday 8am-8pm	The Gender Identity Family Support Line 01 907 3707 Sundays: 6pm - 9pm Tuesdays: 10am - 12pm
RCC Rape Crisis Helpline 1800 77 88 88 24hrs 7 days a week	HSE Live 1850 24 1850 Monday to Friday: 8am - 8pm Saturday and Sunday: 10am - 5pm
ISPCC Childline 1800 66 66 66 24hrs 7 days a week	Samaritans 116 123 24hrs 7 days a week

To update your service provision please email the Child Family Support Network Coordinators
North Louth Paula McCabe paula.mccabe1@tusla.ie or
South Louth AnnMarie Kidd anmarie.kidd@tusla.ie



A message from BeLong To



Regardless of what is happening in the world, we are here for LGBTI+ young people. [Our Youth Workers are providing text, email and phone support for those who need it during this time of uncertainty.](#)

We know that some LGBTI+ young people may feel isolated from their peers and chosen family, feel stuck in their homes with family members who do not support their identity, and feel scared and anxious.

We are here no matter what is going on. This is a scary time and nobody has to be alone during it. [Reach out and talk to our friendly, expert Youth Workers Shane, Kate and Sean. They are happy to listen, provide information and referrals if needed.](#)

Service Updates

We have paused our LGBTI+ youth groups for now to allow people to self-isolate and stay safe until further notice. Our Crisis Counselling service with Pieta will continue for existing clients. If you are a client, your therapist Nash will be in touch with you. Unfortunately, we cannot offer free crisis counselling to new clients during this time. [Visit our website for up-to-date factual information about trans healthcare.](#)

Working Remotely

Although our doors are closed, our entire team is working from home and dedicated to supporting the lives of LGBTI+ young people. Thanks to our dedicated Operations Team, we are set up with the technology and tools to work from home. We are working on innovative ways to stay connected to our community online and continue to provide support to LGBTI+ young people across Ireland.

To update your service provision please email the Child Family Support Network Coordinators
North Louth Paula McCabe paula.mccabe1@tusla.ie or
South Louth AnnMarie Kidd annmarie.kidd@tusla.ie



An Garda Síochána



Chief Superintendent Christy Mangan issued a statement informing the community that the Louth Garda Division wish to advise our communities that during these challenging times, we are continuing to provide a fully resourced Police service working on a 24 hour service. If you have any concerns for yourself, or a family member, neighbour or a vulnerable person, please do not hesitate to make contact with us in order to obtain assistance. We are providing assistance to the most vulnerable in ensuring that they can obtain essential goods from local shops. If possible, make contact by telephone, in order to adhere to social distancing, but if you need to call to a Garda Station, please do. Please make contact on the following telephone numbers for assistance:

Drogheda Garda Station: 0419874200

Dundalk Garda Station: 0429388400

Ardee Garda Station: 0416853222

Community Policing:

Dundalk Garda Station Community Policing Unit are offering support to the elderly and sick in the community. If you require any support you can contact the Community Policing Unit in Dundalk Garda Station.

Phone: 042 9335577 or 042 9388400 **Community Policing extensions:** 4477, 4478 & 4479

An Garda Síochána have developed Crime Prevention advise during Covid 19:

<https://www.garda.ie/en/about-us/our-departments/office-of-corporate-communications/news-media/coronavirus-covid-19-.html>

To update your service provision please email the Child Family Support Network Coordinators
North Louth Paula McCabe paula.mccabe1@tusla.ie or
South Louth AnnMarie Kidd annmarie.kidd@tusla.ie



Comhairle Contae Lú
Louth County Council

Louth County Council Library Services



Library e-services such as e-books, audio books, magazines, newspapers etc. Our Facebook page will also have information on libraries and general community info as well

Phone: 042 935 3190

Email: libraryhelpdesk@louthcoco.ie

Website: <http://www.louthcoco.ie>

To update your service provision please email the Child Family Support Network Coordinators
North Louth Paula McCabe paula.mccabe1@tusla.ie or
South Louth AnnMarie Kidd annmarie.kidd@tusla.ie

National Adult Literacy Agency

The National Adult Literacy Agency website has fantastic resources and help with literacy during COVID 19 crisis. Staff in the agency are working remotely and can provide online and phone support if you are finding it difficult with reading, writing, filling in forms or helping children with homework. Tutors can help with:

- Reading, writing and spelling
- Numbers and basic maths
- Filling in forms, for example for social welfare benefit
- Fun learning ideas for kids
- Understanding health information
- Understanding financial information, for example applying for mortgage relief

Phone: 1800 202065 Monday – Friday 9.30am – 5pm

Text: Learn to 50050

Staff will ring you back with more information and set you up with one of their friendly distance learning tutor.

Website: www.nala.ie

To update your service provision please email the Child Family Support Network Coordinators
North Louth Paula McCabe paula.mccabe1@tusla.ie or
South Louth AnnMarie Kidd annmarie.kidd@tusla.ie



The Community Call

in response to Covid-19, the Government has launched “**The Community Call**”, a major initiative that links local and national government with the community and voluntary sectors. The Community Call is an unprecedented mobilisation of both state and voluntary resources to combat the effects of Covid-19. The purpose of the Community Call is to coordinate community activity and community assistance to where it is needed.

The immediate focus is on the elderly and the most vulnerable, and mobilising rapid response in every county to make sure everyone is looked after. In the coming weeks the focus will expand to broaden the wellbeing of our society and how communities can work together to help the country through the Covid-19 crisis.

The Community Call will be overseen and managed locally by Local Authorities. Led by the Local Authorities Chief Executives, the dedicated community Forum in each county will coordinate and connect the wide range of services and supports available in their specific areas. The forum involves an extensive list of state and voluntary organisations. A dedicated phone line is now operational in every county and the national number **0818 222 024** is also now in operation.

Click on the following link for COVID 19 Community Response For a Local Authority Helplines:

https://volunteersouthdublin.ie/wp-content/uploads/2019/07/COVID_19-Local-Authority-Community-Response-Contact-Information.pdf

Click on the following link for COVID 19 Community Response For advice for people giving support:

https://volunteersouthdublin.ie/wp-content/uploads/2019/07/COVID_19-Advice-when-giving-and-receiving-supports.pdf

To update your service provision please email the Child Family Support Network Coordinators
North Louth Paula McCabe paula.mccabe1@tusla.ie or
South Louth AnnMarie Kidd annmarie.kidd@tusla.ie



Comhairle Contae Lú
Louth County Council

Louth County Council Roma Helpline



Louth County Council Roma helpline is operational. Information regarding the helpline are in English and Romanian below.

English

If you are from the Roma community in Ireland and need information on Coronavirus (COVID-19), you can call **087 1264606** from Monday to Friday from 9am - 5pm. You can call for general information on Coronavirus, as well as advice on accessing medical care if you feel unwell. This information can be provided in Romanes and Romanian.

Romanian

Dacă sunteți Rromi (membri ai comunității Roma) și locuiți în Irlanda și aveți nevoie de informații despre Coronavirus (COVID-19), sunați la **087 1264606**, de luni până vineri, între orele 9 dimineața și 5 după-amiaza. Veți primi primii informații generale despre Coronavirus, precum și sfaturi despre accesarea îngrijirii medicale dacă vă simțiți rău. Aceste informații sunt în limba Română și în limba Rromă.

To update your service provision please email the Child Family Support Network Coordinators
North Louth Paula McCabe paula.mccabe1@tusla.ie or
South Louth AnnMarie Kidd annmarie.kidd@tusla.ie



North Eastern Regional
Drug & Alcohol
Task Force

Cavan ~ Monaghan ~ Louth ~ Meath

North East Regional Drugs and Alcohol Task Force



The Department of Health & HSE have asked the North East Region Drugs and Alcohol Task Force to flag these key resources to all our partners in both the county Drugs & Alcohol Foras, as well as the Children & Young Peoples' Services Committees, and to reassure everyone that frontline addiction support services continue to work with people around their treatment & recovery. All these services have been re-configured to provide tele-supports rather than face-to-face or group work. Further plans are being developed to ensure we can meet the emerging needs of the people who need our support. Details on all local services are available on:

The NE-RDATF website: www.nedrugtaskforce.ie

The national service directories: www.drugs.ie

National helpline is: 1800 459 459

To update your service provision please email the Child Family Support Network Coordinators
North Louth Paula McCabe paula.mccabe1@tusla.ie or
South Louth AnnMarie Kidd annmarie.kidd@tusla.ie



North Eastern Regional
Drug & Alcohol
Task Force

Cavan ~ Monaghan ~ Louth ~ Meath

North East Regional Drugs and Alcohol Task Force



Child and Family
Support Network

DON'T GET LOCKED IN

As we prepare to socially distance ourselves, several countries are reporting an increase in home drinking.

Make your health and home life a priority by following these tips..



Choose Alcohol Free Days

Plan at least two alcohol free days during your week. The more alcohol free days the better!



Don't Stockpile

Don't stockpile alcohol in your home – plan your weekly shop. Only buy as much as you have decided you want to drink during the week. Opt for low-alcohol or no-alcohol choices.



Keep it Late

It can be tempting to drink earlier when you are at home during the day – try to delay any drinking until as late as possible, especially if there are children in your home. Consider a 'time rule' – e.g. No alcohol in our house until after 10pm



Mind the Children

Children can become afraid when adults are drinking. Avoid drinking alcohol until children have gone to bed. Make sure there is at least one non drinking adult in the house at all times.



Out of Sight

Keep alcohol out of sight and out of reach of children. When you pour a drink, put the remainder away out of sight or in another room so you are not tempted to reach for more. Drink water to quench thirst before drinking.



Help is Out There

Making changes can be hard. Contact the HSE support line – 1800 459 459 – if you need help or support in reducing your alcohol use.



alcohol forum

+353 74 9125596 / www.alcoholforum.org

To update your service provision please email the Child Family Support Network Coordinators
North Louth Paula McCabe paula.mccabe1@tusla.ie or
South Louth AnnMarie Kidd anmarie.kidd@tusla.ie

24/04/2020



Feidhmeannacht na Seirbhíse Sláinte
Health Service Executive

HSE Multilingual COVID 19 Resources



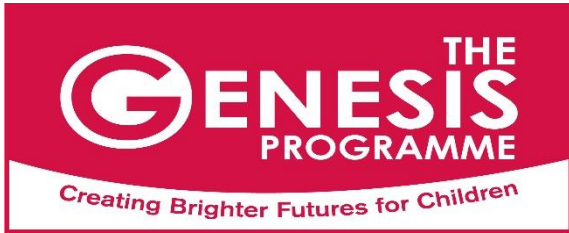
Child and Family
Support Network

The HSE have developed a range of COVID 19 resources for families. The resources include posters and booklets for families that have been translated into a number of different languages. Please follow the link below.

<https://www.hse.ie/eng/services/news/newsfeatures/covid19-updates/partner-resources/covid-19-translated-resources/>



To update your service provision please email the Child Family Support Network Coordinators
North Louth Paula McCabe paula.mccabe1@tusla.ie or
South Louth AnnMarie Kidd anmarie.kidd@tusla.ie



The Genesis Programme



The Genesis Programme have published a document **‘Supporting Parents though the days and weeks ahead’**. It is a comprehensive but easily accessible 32 page resource document that is full of useful tips, strategies, ideas and links to support parents and in turn help them to support their children at the time.

If you would like a copy of this document please click on the link:

Parent Booklet:

<https://flyingstart.ie/wp-content/uploads/2020/03/Supporting-Parents-and-Families-through-the-coming-days-and-weeks-resource-pack.pdf>

Website: www.genesislouth.ie

Phone: 041 9843333

Visit the website below for updated information on the Genesis got Talent Competition

Deadline Friday 24th of April 202 at 5.00pm

Website: www.flyingstart.ie/

Link to help parents manage screen time during the COVID 19 pandemic:

<https://cyberbullying.org/helping-families-manage-increased-screen-time>

GENESIS GOT TALENT

SUPPORTING LOCAL BUSINESS
Winners will get vouchers for their local Arts & Crafts, Toy or Book Shops

ALL ENTRANTS & THEIR FAMILY WILL BE INVITED TO A GGT PARTY!!!

CATEGORIES

- 0-5 Years
- 6-7 Years
- 8-10 Years
- 11-13 Years
- 14-20 Years
- Adult
- Family

PRIZES

Overall Winner: Chocolate Hamper & €100 Voucher

Category Winners: Chocolate Hamper & €50 Voucher

Category Runners-Up: €25 Voucher

Everyone's a Winner

To update your service provision please email the Child Family Support Network Coordinators
North Louth Paula McCabe paula.mccabe1@tusla.ie or
South Louth AnnMarie Kidd anmarie.kidd@tusla.ie

The Changing Lives Initiative APP



An Early Intervention Approach to ADHD - Free APP

- It provides **clear information** about **Attention Deficit Hyperactivity Disorder**
- It gives users **proven strategies** to try at home with their children
- These strategies are **based on over 30 years of research** and are effective in helping to manage inattentive, hyperactive and impulsive behaviours

We will not contact you or share your information with anyone

**DOWNLOAD
THE APP
AT...**

changinglivesinitiative.com

To update your service provision please email the Child Family Support Network Coordinators
North Louth Paula McCabe paula.mccabe1@tusla.ie or
South Louth AnnMarie Kidd anmarie.kidd@tusla.ie



One Family Services



One Family Services have moved all their services to phone and online support for existing service users so your regular service provider should have been in touch already or will be shortly.

Their National helpline is still operational.

Contact: 01 6629212 or 1890 662 212

They are working to extend the hours available so they can support as many people as possible.

Email: support@onefamily.ie

One Family Services are still taking new referrals for services either through the helpline or from another professional families are working with.

They will keep updating their website www.onefamily.ie and social media accounts with any service changes.

Click on the following link for services still available during COVID 19:

<https://onefamily.ie/services-still-open-helpline-information-services-parenting-supports-and-counselling-services-still-open/>

To update your service provision please email the Child Family Support Network Coordinators
North Louth Paula McCabe paula.mccabe1@tusla.ie or
South Louth AnnMarie Kidd annmarie.kidd@tusla.ie

Treoir Information for Unmarried Parents

Treoir information service remains open but as a response to COVID-19 recommendations to the public, we have suspended our drop-in service until further notice. For now and until further notice if you have any queries you can contact them in the following ways:

Contact information:

Confidential helpline: 01 6700120

Email: info@treoir.ie

log your query on our website: <https://www.treoir.ie/request-a-call-back/> to request a call back

Message us through our Facebook or twitter accounts.

Our operational hours are Monday – Friday 10am – 4pm, excluding public holidays.

Guidelines have been issued to assist parents and practitioners in relation to access during restrictions brought in to tackle Covid-19. These guidelines reflect the position of the Department of Justice and Equality, issued by Minister Charlie Flanagan yesterday, and endorse the practice direction of the President of the District Court, last week. Visit the website for further information:

Website: www.treoir.ie

To update your service provision please email the Child Family Support Network Coordinators
North Louth Paula McCabe paula.mccabe1@tusla.ie or
South Louth AnnMarie Kidd annmarie.kidd@tusla.ie

Drogheda River Rescue



Child and Family
Support Network



CORONAVIRUS COVID-19

**IF YOU KNOW ANYONE WHO IS
VULNERABLE OR ANY ELDERLY PEOPLE WHO NEEDS
ASSISTANCE BE IT GETTING SUPPLIES TO THEM FROM MEDICATION
OR FOOD OR ANYTHING ELSE.
PLEASE DO NOT HESITATE TO CALL US ON.**

 **089 2505562**

WASH HANDS



COVER MOUTH



**AVOID TOUCHING YOUR
FACE**



**KEEP SURFACES
CLEAN**



**AVOID SHAKING
HANDS AND HUGGING**



**KEEP A SAFE
DISTANCE**



To update your service provision please email the Child Family Support Network Coordinators
North Louth Paula McCabe paula.mccabe1@tusla.ie or
South Louth AnnMarie Kidd anmarie.kidd@tusla.ie



Teen Parents Support Programme TPSP

The Teen Parent Support Programme have suspended their home support visits until further notice. The Project Workers we providing support over the phone.

Contact:

Teen Parent Support Programme Project Worker: Ciara Finan

Email: lifestart@lifedev.ie

This Service is relevant for Teen parents who require support.

To update your service provision please email the Child Family Support Network Coordinators
North Louth Paula McCabe paula.mccabe1@tusla.ie or
South Louth AnnMarie Kidd annmarie.kidd@tusla.ie



Citizens Information



During the COVID -19 pandemic, Citizens Information Centres are offering an email & phone service. If you would like to request a phone call from an Information Officer please email: covid19@citinfo.ie and include your phone number. An Information officer will then give you a call.

#COVID19 Pandemic Unemployment Payment

Have you had to take time off work to look after your children?

If your employer cannot pay you during this time, you can apply for a #COVID19 Pandemic Unemployment Payment online at <https://services.mywelfare.ie/en/>

Applying online for the new #COVID19 Pandemic Unemployment Payment? Make sure you put in your details correctly including your date of birth, PPS number, and 22 digit IBAN number.

Follow the link for more information: <https://bit.ly/33WpEfw>

To update your service provision please email the Child Family Support Network Coordinators
North Louth Paula McCabe paula.mccabe1@tusla.ie or
South Louth AnnMarie Kidd annmarie.kidd@tusla.ie



Louth County Childcare Committee



Louth County Childcare Committee are open for business, however the office is closed and staff are working from home. If your service requires support you can contact them in the following ways:

Email query to: info@louthchildcare.ie (leave a contact number and they will call you back).

Emergency calls out of hours:

Claire Woods: 087 1448159

All general calls to the following numbers:

Claire Woods: Monday – Friday 9am – 5pm

Sharon Manning: 087 4169820 Monday – Thursday 9am – 5pm

Frances Morrow: 087 3749929 Wednesday – Friday 9am – 4pm

Miriam Finnegan: 087 7538575 Monday, Tuesday, Wednesday & Friday 9am – 5pm

Louth County Childcare will continue to send out updates via email and Facebook so stay in touch and take care.

Website: <https://www.louthchildcare.ie/>

To update your service provision please email the Child Family Support Network Coordinators
North Louth Paula McCabe paula.mccabe1@tusla.ie or
South Louth AnnMarie Kidd annmarie.kidd@tusla.ie



Child and Family
Support Network

Tusla Educational Support Services (TESS)

Tusla Educational Support Services in Louth have two Educational Welfare Officer's who are working remotely at present. They are maintaining contact with the cases / families on their caseload and are liaising with other professionals who are involved with these families. The EWO's are also ensuring that children have been provided with work from their schools and are actively following up with schools if the children are without work. The Educational Welfare Officer's are continuing to work with children who are out of school at the moment and are linking families with services or information which may support families at this time. They are also passing on information regarding educational programmes which are available online. Work is continuing in supporting parents with school applications and children who have been excluded from school.

North Louth Educational Welfare Officer

Contact: Shaun Kennedy

Phone: 087 4639638

Email: shaun.kennedy@tusla.ie

South Louth Educational Welfare Officer

Contact: Sinead Donnelly

Phone: 086 1746145

Email: sinead.donnelly@tusla.ie



To update your service provision please email the Child Family Support Network Coordinators
North Louth Paula McCabe paula.mccabe1@tusla.ie or
South Louth AnnMarie Kidd annmarie.kidd@tusla.ie

School Completion Programmes

The School Completion Programme (SCP) is one of the workstrands of TUSLA Educational Support Service (TESS) along with the Home School Community Liaison Officers.

All School Completion Programme's in Louth continue to support their targeted young people and families during the COVID 19 restrictions. Some school Completion sites are assisting with food packs distribution as part of the School Meals Programme.

The following are the contact details for School Completion Programme Coordinators in Louth:

Niall Weldon

Dun Dealgan School Completion Programme, Dundalk

niall.weldon@scp.ie

Majella O'Hanlon

Oriel School Completion Programme, Dundalk

majella.ohanlon@scp.ie

Andrea Duffy

Deeside School Completion Programme, Mid Louth

andrea.duffy@scp.ie

Christopher Menary

Holy Family School Completion Programme, Drogheda

christopher.menary@scp.ie

Sara Russell

Drogheda Northside School Completion Programme, Drogheda

sara.russell@scp.ie

To update your service provision please email the Child Family Support Network Coordinators
North Louth Paula McCabe paula.mccabe1@tusla.ie or
South Louth AnnMarie Kidd annmarie.kidd@tusla.ie



An Roinn Gnóthaí Fostaíochta
agus Coimirce Sóisialaí
Department of Employment Affairs
and Social Protection

Department of Employment Affairs and Social Protection



The function of the Department of Social Protection is to provide support to people looking for income supports.

To apply for the COVID 19 payment please visit: www.mywelfare.ie

Contact details for area managers:

Intreo Centre Dundalk:

Sharon Curran sharon.curran@welfare.ie

Intreo Centre Drogheda:

Karen Usher karen.usher@welfare.ie

Employer Relations NE Division:

Ann Keeley anne.keeley@welfare.ie

To update your service provision please email the Child Family Support Network Coordinators
North Louth Paula McCabe paula.mccabe1@tusla.ie or
South Louth AnnMarie Kidd anmarie.kidd@tusla.ie



Louth Local Sports Partnership



Louth Local Sports Partnership, is in place to provide support to sport and active recreation at local level in the Louth area. The key aims of the local sports partnerships are to increase participation in sport and physical recreation and ensure that local resources are used to best effect.

In Louth we are blessed with a wide and diverse range of national recreational spaces, sporting infrastructure and physical activity opportunities, that are at the disposal of potential participants across all sections of our society.

Louth LSP support sustainable participation in sport and physical activity in County Louth for everyone. We do this by working with individuals, communities and agencies to identify the participation sports needs of the county and we then work with others to realise the programmes and events which respond to these needs.

For further details please visit the **Facebook page: louth local sports partnership**

To update your service provision please email the Child Family Support Network Coordinators
North Louth Paula McCabe paula.mccabe1@tusla.ie or
South Louth AnnMarie Kidd annmarie.kidd@tusla.ie

FREE Webinar - Empowering Autistic Individuals to be Successful



Child and Family
Support Network

Join Dr. **TEMPLE GRANDIN**, the World's most Famous and Influential person with Autism and outspoken proponent of Autism Awareness for a very **Special Pre-Recorded, On-Demand Webinar** on **Tuesday, May 5th, 2020 at 7.30pm until 8.30pm.**

With this Exclusive Once-off Webinar with Dr. Temple Grandin you will:

- Gain **INSIGHTS** into the Mind of Someone **LIVING WITH AUTISM**
- Learn How Temple Grandin, **THINKS, LEARNS & EXPERIENCES** Life as a **PERSON WITH AUTISM**
- Discover **INTERVENTIONS, THERAPIES & SUPPORTS** which have Enabled her to be **SUCCESSFUL**
- Transform Your **VIEW & UNDERSTANDING** of **AUTISM** with Temple's first-hand **LIFE STORY**

And much more....

Venue: Online

When: Tuesday, May 5th, 2020

Time: 7.30 pm - 8.30 pm

Your Investment: FREE for a limited time only!

* Limited Places Available*

To update your service provision please email the Child Family Support Network Coordinators
North Louth Paula McCabe paula.mccabe1@tusla.ie or
South Louth AnnMarie Kidd annmarie.kidd@tusla.ie

Louth Leader Partnership

“Louth Leader Partnership is open and supporting the local community during the COVID-19 crisis despite the fact that our offices are closed to the public. It operates a comprehensive range of social inclusion, employment services, family support, and rural, community development programmes and LLP know that many of the people we work with are struggling with the isolation, employment or other issues associated with the current restrictions.”

“To support those people, our services are responding rapidly to current circumstances and currently our staff teams are supporting vulnerable individuals and community groups wherever needed. Some of the ways we are assisting include, community outreach, support with job seekers forms, Covid-19 claim forms C.V.'s job match services in rapidly changing labour market etc”

Louth Leader Partnership are also there to support businesses and organisations who might be finding it difficult to deal with some of challenges thrown up by the crisis.

Louth Leader Partnership are constantly updating their website with information from reliable sources.

Website: www.louthleaderpartnership.ie

Louth Leader Partnership resources and Louth helplines: <https://louthleaderpartnership.ie/covid-19-support-news/>

Louth Leader Partnership video library: <https://louthleaderpartnership.ie/videos/>

To update your service provision please email the Child Family Support Network Coordinators
North Louth Paula McCabe paula.mccabe1@tusla.ie or
South Louth AnnMarie Kidd annmarie.kidd@tusla.ie



LOUTH LEADER PARTNERSHIP
Building Community & Enterprise



DUNDALK LOCAL EMPLOYMENT SERVICE

CONTINUES TO PROVIDE THE FOLLOWING SERVICES

- We can hold a telephone appointment
- We can update your C.V.
- Print out your C.V. and post to you
- Post out your C.V. to employers

Employers can contact us at the above
number



042-9328897

Opening Hours

**Monday to Friday
10.00 - 1.00pm**



**Child and Family
Support Network**

To update your service provision please email the Child Family Support Network Coordinators
North Louth Paula McCabe paula.mccabe1@tusla.ie or
South Louth AnnMarie Kidd annmarie.kidd@tusla.ie

Service Updates



LMETB Youth Officer

The Louth Meath Education and Training Board Youth Officer is continuing to provide Support, advice and assistance to all youth projects and voluntary clubs. Application for Grant aid continues to all registered groups.

Contact details:

Youth Officer, LMETB: Ian Walker

Phone: 042-9334047

Email: IWalker@lmetb.ie



The Probation service

At present the probation service are working from home and in regular contact with their clients via their mobile numbers.



To update your service provision please email the Child Family Support Network Coordinators
North Louth Paula McCabe paula.mccabe1@tusla.ie or
South Louth AnnMarie Kidd annmarie.kidd@tusla.ie



The Peter Mc Verry Trust



The Peter McVerry Trust Flowerhill Family Hub and the Drogheda Family Hub is continuing to provide supported temporary accommodation for families experiencing homelessness during COVID-19. PMVT continue to liaise with relevant local authorities on a regular basis. We continue to support, provide information and carry out key-working with residents in the Family Hub while making every effort to practice social distancing.

Contact details:

PMV Trust Drogheda Hub Manager: Hilary Walsh

Phone: 087 7159555

Email: hwalsh@pmvtrust.ie

To update your service provision please email the Child Family Support Network Coordinators
North Louth Paula McCabe paula.mccabe1@tusla.ie or
South Louth AnnMarie Kidd annmarie.kidd@tusla.ie



The Irish Wheelchair Association



The Irish Wheelchair Association are providing support to families with essential collections and deliveries such as groceries and medications. They currently have three drivers on the road providing this services covering **Louth and East Meath**.

The service is available from Monday to Friday 10am -4pm.

Helpline number: 1800 300 666

Please pass on this contact number if you know anyone needing assistance.

To update your service provision please email the Child Family Support Network Coordinators
North Louth Paula McCabe paula.mccabe1@tusla.ie or
South Louth AnnMarie Kidd annmarie.kidd@tusla.ie



College of
Psychiatrists
of Ireland

The College of Psychiatrists of Ireland



The College of Psychiatrists of Ireland has begun to release a series of short videos to provide practical help for families of young people with mental illness during Covid 19. The first video provides information on how families can support young people with ADHD.

To watch this video please click on the following link:

<https://www.irishpsychiatry.ie/covid-19-information-and-updates-from-cpsychi/covid-19-supporting-families-of-young-people-with-mental-illness/>

Website: <https://www.irishpsychiatry.ie/>

To update your service provision please email the Child Family Support Network Coordinators
North Louth Paula McCabe paula.mccabe1@tusla.ie or
South Louth AnnMarie Kidd annmarie.kidd@tusla.ie



Age Action Hardship Fund



Age Action Hardship Fund

Age Action has launched a COVID-19 Hardship Fund in conjunction with the Irish Red Cross to respond to the immediate needs of older people in vulnerable situations across Ireland experiencing additional hardship as a result of the COVID-19 health crisis.

Why: Age Action and the Irish Red Cross know that some older people in vulnerable situation and at the highest risk of the corona virus will need additional supports over the coming weeks, particularly as they are now required to cocoon to protect themselves and others. This scheme is designed to provide immediate practical relief to assist in alleviating the hardships they experience due to the COVID-19 pandemic.

Who Can Apply: Older people in need of assistance, family members supporting an older person and carers of older people, social workers and local voluntary organisations or community groups providing direct assistance to individuals within this target group.

For information on how to apply please follow the link below.

<https://www.ageaction.ie/how-we-can-help/age-action-and-irish-red-cross-covid-19-hardship-fund>

Website: <https://www.ageaction.ie/>

Email: info@ageaction.ie

Phone: 01 475 6989

To update your service provision please email the Child Family Support Network Coordinators
North Louth Paula McCabe paula.mccabe1@tusla.ie or
South Louth AnnMarie Kidd annmarie.kidd@tusla.ie



Child and Family
Support Network

Best Virtual Museum Tours for Kids:

The Louvre

Via their website:

www.louvre.fr/en/visites-en-ligne/

The British Museum

Via their website:

<https://britishmuseum.withgoogle.com/>

The Metropolitan Museum of Art

Via their website:

www.metmuseum.org/art/online-features/metkids/

Van Gogh Museum

Via their website:

<https://artsandculture.google.com/partner/van-gogh-museum>

Roald Dahl Museum and Story Centre

Via their website:

www.roalddahl.com/museum/visit/virtual-museum-tour

NASA Glenn Research Center

Via their website:

www.nasa.gov/glennvirtualtours

To update your service provision please email the Child Family Support Network Coordinators
North Louth Paula McCabe paula.mccabe1@tusla.ie or
South Louth AnnMarie Kidd anmarie.kidd@tusla.ie

The National Council for Special Education are providing online resources for children and young people with Special Educational Needs who are at home as a result of the schools' closure. The resources are designed to assist parents, teachers and students in special schools, special class placements and mainstream classes.

Click on the link below for online resources: <https://ncse.ie/online-resources-for-parents>

Website: <https://ncse.ie/>



Mid Louth Youth Service & New Leaf Project



Mid Louth Youth Service

New Leaf are currently running all groups with young people via Zoom. This service is open to the whole of Mid Louth. Supports are as follows:

- Providing support and signposting for Young People and people in the Community.
- Supporting Mental and Physical wellbeing by linking them to services
- Supporting those young people and families at risk
- Supporting other agencies in the area such as Tusla and Deeside School Completion Programme
- Link up calls to support people during isolation

The Groups currently running are:

- Young Women's Group
- Animal Science
- X Hale
- Virtual Drop In (Ardee and Dunleer)
- Mid Louth Comhairle na nOg
- LGBT support group
- One to One Support

Anyone that is interested please contact Damien McKenna

Phone: 0873127769

Email: newleaf@deehub.ie



To update your service provision please email the Child Family Support Network Coordinators
North Louth Paula McCabe paula.mccabe1@tusla.ie or
South Louth AnnMarie Kidd annmarie.kidd@tusla.ie



Mid Louth Community & New Leaf Project



Community Women's Groups

The Mid Louth Women's groups are continuing remotely via Zoom, everybody is welcome to join in. They are also doing whatsapp link up calls to support people during isolation

The groups currently running are:

- Chair Zumba
- Regular Zumba
- Meditation
- Brand New Book Club
- Supporting families and women in rural isolation

New leaf can and would cater for a Men's group also.

Anyone that is interested please contact Kieva

Phone: 0873377300

Email: newleafcommunity@deehub.ie



To update your service provision please email the Child Family Support Network Coordinators
North Louth Paula McCabe paula.mccabe1@tusla.ie or
South Louth AnnMarie Kidd annmarie.kidd@tusla.ie



Parentline



Parentline is a free, National, confidential helpline that offers parents support, information and guidance on all aspects of being a parent and any parenting issues. Sometimes all parents need is a friendly, listening ear. You are not on your own. Parentline volunteers are extensively trained in listening and counselling skills.

There is no typical call. Parents call with all sorts of problems and children of all ages offer different parenting challenges. Anxiety, anger, aggression, isolation and loneliness, bullying, discipline, frustration, school refusal, drugs, teenage issues and verbal and emotional abuse are just some of the main reasons for the calls we receive daily. What all our callers have in common is that they are seeking help, support and guidance. The vast majority of our callers are overwhelmingly satisfied with the service offered and the assistance received.

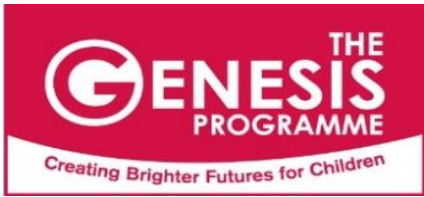
Helplines are open:

Monday – Thursday 10am – 9pm

Friday 10am – 4pm

Phone: 1890 927277

To update your service provision please email the Child Family Support Network Coordinators
North Louth Paula McCabe paula.mccabe1@tusla.ie or
South Louth AnnMarie Kidd annmarie.kidd@tusla.ie



ParentChild+

Equal Possibilities From The Start



A new home visiting programme taking place in Dundalk

Who is it for:

Any parent with a child aged between 16 months and 30 months. It takes place for a total of 92 visits following the school year

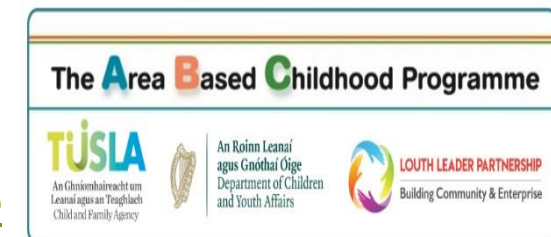
What does it involve:

- A home visitor would visit the family twice a week for 30 minutes each visit
- Each week the home visitor brings a new book, toy or craft activity which is left with the family
- The home visitor models using the book or toy, introducing new questions and vocabulary to the child alongside the parent
- Parents are encouraged to follow on with each weekly activity

Aim of the Programme:

- To support positive parent-child relationships
- To support children's social-emotional development
- Promote skills essential for school readiness

For more information contact Evelyn on 0866002998 or email evelyn.lee@cllp.ie



To update your service provision please email the Child Family Support Network Coordinators
North Louth Paula McCabe paula.mccabe1@tusla.ie or
South Louth AnnMarie Kidd annmarie.kidd@tusla.ie

Articles by Dr John Sharry, founder of Parents Plus

Resources for individuals, families and parents during Covid-19 Crisis

Understanding and tackling the issues around the novel Coronavirus (Covid-19) is challenging for all of us. Below is a list of resources for individuals, families and parents on how they can help themselves and their children. The resources will be updated regularly and can be accessed at:

<https://www.parentsplus.ie/post/resources-for-individuals-families-and-parents-during-covid-19-crisis/>

Some of the articles this week are outlined below:

1. Managing family and relationship conflict during Covid crisis:

<http://pp.uat.dreamsedge.ie/managing-family-and-relationship-conflict-during-the-covid-crisis/>

2. 16 tips to help you cope in the new world we live in:

<http://pp.uat.dreamsedge.ie/coronavirus-16-tips-to-help-you-cope-in-the-new-world-we-live-in/>

3. Helping young children understand social distancing:

<http://pp.uat.dreamsedge.ie/helping-young-children-understand-social-distancing/>

4. Talking to children about Coronavirus (Covid-19)

<http://pp.uat.dreamsedge.ie/talking-to-children-about-coronavirus/>

Website: www.parentsplus.ie

To update your service provision please email the Child Family Support Network Coordinators
North Louth Paula McCabe paula.mccabe1@tusla.ie or
South Louth AnnMarie Kidd annmarie.kidd@tusla.ie