



# Summary of the Children & Young People's Services Plan in Dún Laoghaire-Rathdown



Developed by the Dún Laoghaire-Rathdown  
Children and Young People's Services  
Committee (DLR CYPSC)

# What is the Children and Young People's Services Plan?

It is a national policy imperative that services in the county work together to consider the needs of the child and youth population and collaborate in evidence-informed responses to those needs (Better Outcomes, Brighter Futures: the National Policy Framework for Children and Young People 2014 – 2020, DCYA).

The Children and Young People's Services Committee (CYPSC) in each county in Ireland is tasked to facilitate this and the interagency work to progress the five national policy outcomes, which are that that children and young people in Ireland:

1. Are active and healthy, with positive physical and mental wellbeing
2. Are achieving full potential in all areas of learning and development
3. Are safe and protected from harm
4. Have economic security and opportunity
5. Are connected, respected and contributing to their world




Action plans to improve these 5 national outcomes are at the heart of this inaugural CYPSC plan for Dún Laoghaire-Rathdown, which has been developed through consultation and planning with over 140 staff members of statutory, community and voluntary services throughout the county.

This first CYPSC plan for Dun Laoghaire-Rathdown brings together a wide range of stakeholders services who are committed to working on an interagency basis to address the identified priority needs of the child and youth population. This will result in children and young people being able to access the right kind of support when they need it.

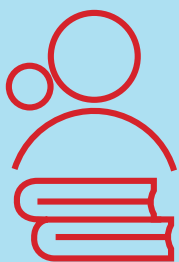
This plan also aspires to building the capacity of services in a range of sectors to hear and respond to the voice of diverse young service users in meaningful ways and to build the capacity of young leaders to participate in the various CYPSC structures and initiatives.

# Children and Young People in Dun Laoghaire Rathdown - The Facts

Children and young people aged 0 to 24 years of age constitute almost a third (69,581) of the entire population of Dún Laoghaire-Rathdown (219,018).

	No in DLR	% of DLR population
 Child & youth population aged 0 - 24 years	<b>69,851</b>	<b>32%</b>
 Child population aged 0 - 17 years	47,794	21.9%
 Young adult population aged 18 - 24 years	22,056	10.1%

## Notable population characteristics in Dún Laoghaire-Rathdown are:



**Most highly educated mothers** - Dún Laoghaire-Rathdown has the highest rates of mothers with third level education (59.3%) which greatly exceed the national average (36.7%) and Dublin regional average (39%).



**Highest rates of young people in Higher Education** - Young people in Dún Laoghaire-Rathdown have the highest progression rates to third level education in Ireland with 91.6% of all Leaving Certificate students continuing onto college or university.



**Oldest first time mothers** - Dún Laoghaire-Rathdown is striking in terms of having the oldest first-time mothers in the State with the average of 33.1 years of age. (CSO, 2016). This is higher than the Dublin regional average (31.3 years) and more than two years above the State average (30.9 years).



**Low rates of teen motherhood** - Conversely Dún Laoghaire-Rathdown has one of the lowest rates of teenage motherhood in the State with just 3 registered births to mothers aged 10 to 17 years in in 2016. This is a birth rate of 1.4 per 10,000 females aged 10 to 17 years of age, in comparison to the State average of 3.8.



**Most affluent Local Authority area** - Dún Laoghaire-Rathdown is the most affluent local authority area in the country with 50.8% of Small Areas classified by the 2016 Pobal Deprivation Index as 'Affluent', 7.6% 'Very Affluent' and 0.3% 'Extremely Affluent'.

# The Challenges

## Particular challenges impacting the child and youth population include:



**Unequal rates of breastfeeding** - Breastfeeding offers an extensive range of proven health benefits to babies' development. Although Dublin South East Local Health Office (LHO) area has the highest breastfeeding rates in the State with 70.4% mothers breastfeeding exclusively at 3 month PHN visit, Dun Laoghaire LHO reports just **28.1% of mothers breastfeeding** exclusively at 3 months.



**Lack of access to sufficient and affordable early childhood care and education** - The county has the highest childcare fees in the country, with a fulltime Childcare place averaging €233.26 per week which is €55.34 or 31% above the national average. There is also a significant lack of available childcare places.



**Lack of access to a Domestic Violence refuge for children and carers** - 452 Domestic Violence Incidents were recorded in 2018 across the DMR Eastern Garda Division, which covers the Dún Laoghaire-Rathdown County Council area. There is currently no domestic violence refuge in Dun Laoghaire Rathdown for children and young people impacted by domestic violence and their carers.



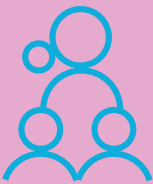
**Child Protection and Welfare Concerns** - In 2018, there were **1270 Child Protection and Welfare referrals made to Tusla** for children and young people living in the Dublin South and the Dublin South East area. This covers all areas in Dún Laoghaire-Rathdown and the area of Rathfarnham. The most common reasons for referral is parents who misuse drugs or alcohol, families with significant relationship difficulties and domestic violence.



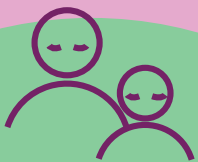
**Children in Care** - A child is placed in State foster care or residential care by Tusla when their parents are not able to provide appropriate care or when a child has been subject to abuse. In December 2018, there were **273 children and young people in the care of Tusla** in the Dublin South, Dublin South East and Wicklow area. The most **common reasons for admission to care** were neglect and child welfare concerns, mainly due to parental drug/alcohol abuse or because the parent was unable to cope.



There is a significant **over-representation of white Irish Traveller children in state care**. 0.2% of the general population in Dun Laoghaire-Rathdwon are Travellers. However 14.65% of the population of children in care are of Traveller ethnicity in the Tusla ISA Area of Dublin South, Dublin South East and Wicklow.



**Lone Parents** - According to Census 2016, there were 3,363 'Lone Parent' families with children under the age of 15 residing in Dún Laoghaire-Rathdown. This represented 15.4% of the families with children under the age of 15. Small Areas with the highest rates of over 55% lone parents were located in Sallynoggin, Loughlinstown and Ballyogan.



**Hidden pockets of Disadvantage** - In total, there is a total population of **10,289 residing in areas classed as 'Disadvantaged' or 'Very Disadvantaged'**. It is important to note that of the total population residing in these disadvantaged or very disadvantaged areas, 35% (or 3,671) residents are children and young people aged under 24 years.

# Membership of DLR CYPSC

101 Managers and Senior Practitioners from 23 statutory organisations and 20 Community and Voluntary services are members of the DLR CYPSC structures in 2020, attending either the Strategic Area Management Committee and/or one of the five Subgroups.

## Tulsa Child and Family Agency

(Dublin South, Dublin South East & Wicklow)

- Area Manager's Office
- Duty/Child Protection Services
- Child Welfare Services
- Aftercare Services
- Prevention, Partnership & Family Support
- Child & Family Support Networks
- Educational Welfare Services
- Domestic, Sexual and Gender Based Violence Regional Service

## Health Services Executive (HSE), Community Healthcare East

- Primary Care Psychology (Dublin South, and Dublin South East)
- Suicide Prevention Office
- Social Work (Mental Health)
- Health Promotion
- Primary Care Speech & Language

## Dún Laoghaire-Rathdown County Council

- Community & Culture Department
- Local Community Development Committee (LCDC)
- Comhairle Na N-Og (youth council)
- Sports Partnership
- Housing Welfare Office
- Dlr Music Generation

## National Educational Psychology Service (NEPS), Department of Education & Skills

- Regional Management Office
- Senior Psychology Service

## St John of God's Community Mental Health

- Child and Adolescent Mental Health Services (CAMHS), Lucena Rathgar
- Cluain Mhuire Adult Mental Health Services
- Service Improvement Management
- REACH
- Junior Reach
- Senior Social Work

## Crosscare Youth Services (DLR)

- Dun Laoghaire Youth Services
- Dundrum Youth Services
- Teen Counselling
- Beat Café Youth Committee

## Barnardos

- National Children's Services Office
- Ballyogan service
- Dun Laoghaire service
- Loughinstown service

## Southside Travellers Action Group (STAG)

- Management
- Youth service
- Educational service
- Community outreach service

## Exchange House National Travellers Service (Mental Health)

## **Dublin and Dún Laoghaire Education Training Board**

- Regional Youth Office
- Youth Sports Office
- Youthreach Sallynoggin
- Dún Laoghaire Community Training College

## **An Garda Síochána (Dublin Metropolitan Region East)**

- Chief Superintendent's Office
- Protective Services
- Community Policing (Cánbinteely & Shankill, Blackrock)

## **University College Dublin**

- Office of the Registrar
- Students Union
- Community Engagement Office
- Access Office
- Department of Psychology
- Student's Union

## **Institute of Art and Design (IADT)**

- Student's Union

## **Irish Primary Principals Network (IPPN)**

## **National Association of Post-Primary Principal (NAPD)**

- St Colmcilles Community School

## **Blackrock Education Center**

## **DLR County Childcare Committee**

## **School Completion Programmes**

(Cabinteely SCP; Sallynoggin SCP; Tiernans Balally SCP; Balinteer SCP)

## **Home School Community Coordinators**

(St Tiernan's School; Columbus National School, Loughlinstown; Scoil Mhuire, Shankill;)

## **School Principals**

(Our Lady of Good Counsel Boy's National School; Scoil Mhuire, Shankill)

## **Southside Partnership DLR**

- Management
- Early Years
- Youth at Risk Network
- Women's Programme

## **Peter McVerry Trust**

- Head of Services
- Manager Family Hubs
- Management of Family Hubs
- Family Hub Staff (Monkstown and Blackrock)

## **Focus Ireland**

- Project Leader
- Case Managers

## **Sophia Housing**

## **Sonas Domestic Violence**

- Manager Community Services
- Head of Services
- TLC Kidz Coordination

## **Women's Aid**

## **Carrs Child & Family Service**

## **PRISM Dlr**

**My Project** (formerly Neighbourhood Youth Project)

## **Ballyogan Family Resource Centre**

## **Rosemount Family Resource Centre**

## **Hillview Family Resource Centre**

## **Balally Family Resource Centre**

## **Southside Women's Action Network**

## **DLR Drugs & Alcohol Taskforce**

## **Depublish**

## **CyberSafe Ireland**



# Our Area: Dún Laoghaire-Rathdown



Dún Laoghaire Rathdown is a county in the Dublin Region. It was established as its own county in 1994, and has a population of over 219,018. 32% of citizens are children and young people aged between 0 - 24 years

it is located to the south east of Dublin, bordered to the north by Dublin City Council local Government area, to the west by South Dublin county, and the south by County Wicklow.

# National Policy Mandate for the CYPSC

*Better Outcomes, Brighter Futures: the National Policy Framework for Children and Young People 2014 – 2020, Department of Children and Youth Affairs*

## CROSS CUTTING TRANSFORMATIONAL GOALS

Support the Parents

Earlier Intervention & Prevention

Earlier Intervention & Prevention

Ensure Quality Services

Strengthen Transitions

Cross Government & Interagency Collaboration & Coordination

Strenghtens the support system around the Child and Young Person

## BETTER OUTCOMES

Active & Healthy

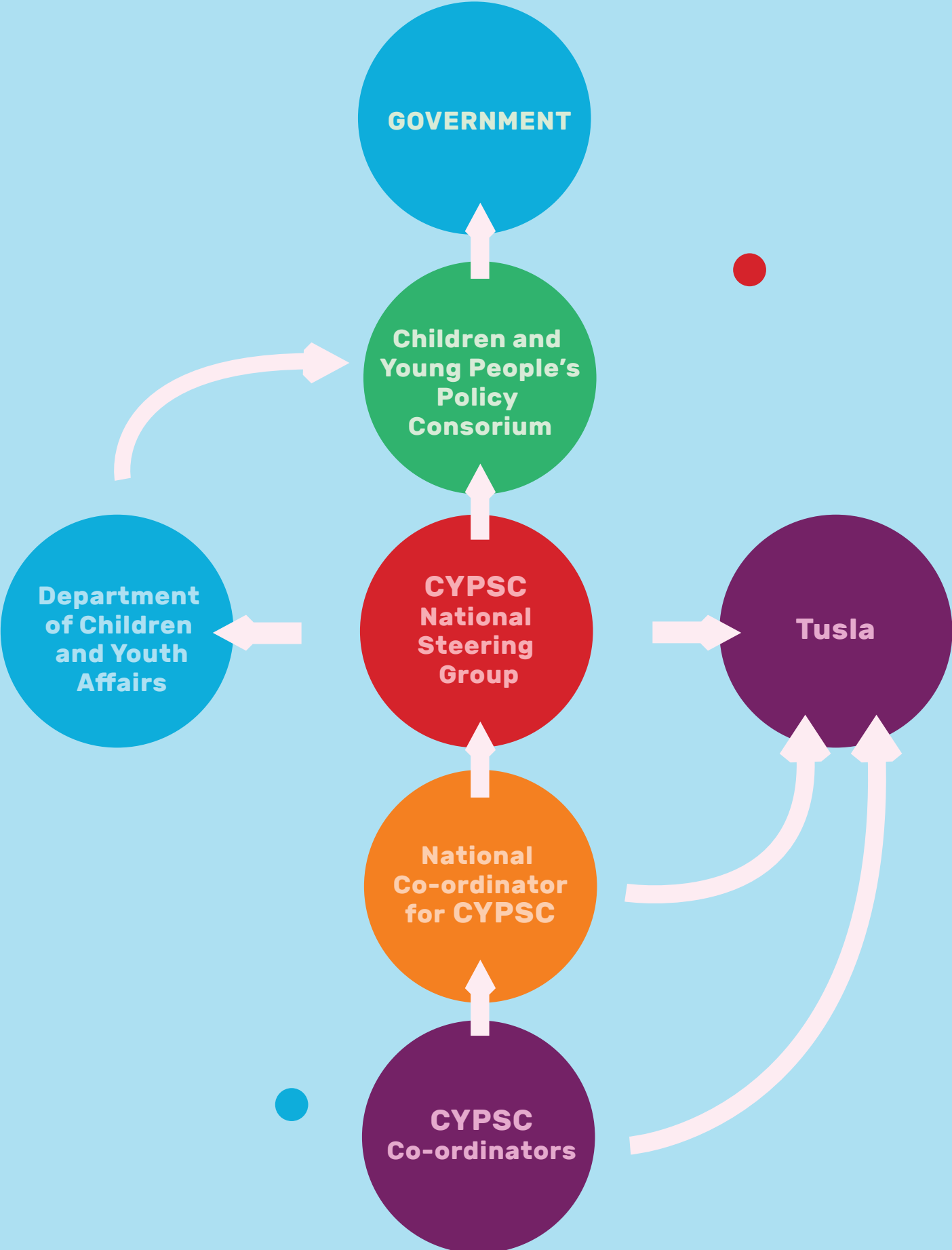
Achieving in all areas of Learning & Development

Safe & Protected from harm










Economic Security & Opportunity

Connected Respected & Contributing

# Structure and reporting of the CYPSC



# Summary of the Developmental Phases of DLR CYPSC from 2017-2019

PHASE	DEVELOPMENTAL ACTIVITY 2017-2019	
1	 Socio-Demographic Data Baseline	Commissioning a socio-demographic evidence baseline report on the child & youth population in DLR using indicators aligned to the DCYA 5 National Outcomes
2	 Service Mapping	Developing an extensive listing of services in DLR by National Outcome area. Collaborating with Dublin CYPSC colleagues to commission the online, geocoded directory of Dublin based services <a href="http://www.dublincypscdirectory.ie">www.dublincypscdirectory.ie</a>
3	 Governance Structures	Securing intersectoral senior management representation & establishing the governance structure of the the DLR CYPSC Strategic Area Management Committee.
4	 Needs Analysis	Conducting an extensive, inclusive and participatory needs analysis through consultation with over 140 stakeholder services and 200 young people in DLR .
5	 Strategic Priorities	Discussion of needs analysis findings and agreement of strategic priority areas for interagency collaboration across sectors and services.
6	 Outcome Priorities	Interagency identification of the key target outcomes within the strategic priority areas & the required actions necessary to achieve these.
7	 Implementation Subgroups	Creation of 5 Subgroups of interagency stakeholders aligned to each National Outcome co-chaired by lead services. Facilitation of all Subgroups to agree clear action plans, using an Outcomes Based Accountability process.
8	 CYPSC Plan Approval Process	DLR CYPSC plan written, reviewed and approved of by (1) the DLR CYPSC Strategic Area Management Committee (2) the National CYPSC Review Group including DCYA.
9	 Public launch & implementation	Launch of finalised first DLR CYPSC county plan, 2020-2022 and collaborative implementation of plan.



Health & Mental Health Subgroup

# Health & Mental Health Subgroup Priority Actions

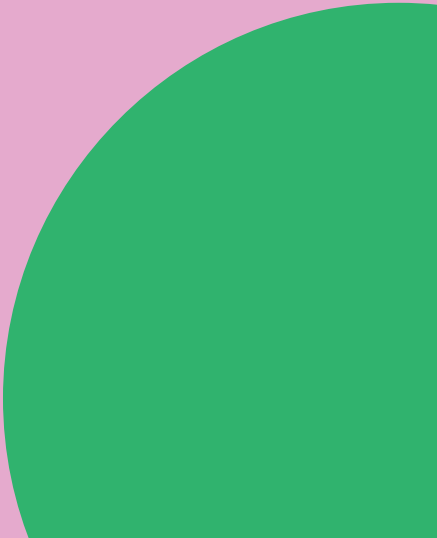
IDENTIFIED UNMET NEED	STRATEGIC PRIORITY ACTION AGREED
<b>INCREASE INTERAGENCY SUPPORT FOR BREASTFEEDING</b>	Develop interagency project plan to increase breastfeeding rates in Dún Laoghaire Local Health Office Area through inter-sectoral support for breastfeeding including in public spaces.
<b>SUPPORT FOR THE MENTAL HEALTH OF BABIES, EARLY YEARS CHILDREN AND THEIR PARENTS</b>	Establish an interagency Infant and Early Years Mental Health network to support professional development, build workforce capacity to implement the new 'First Five' policy, support professional development and raise public awareness of this critical developmental period.
<b>RELIABLE, DETAILED DATA ON PHYSICAL HEALTH &amp; ACTIVITY OF THE CHILD &amp; YOUTH POPULATIONS</b>	Commission and support further research, in collaboration with stakeholder services, to illuminate the health & physical activity needs for the child and youth populations in Dún Laoghaire-Rathdown.
<b>VISIBLE, ACCESSIBLE AND TIMELY YOUTH MENTAL HEALTH &amp; WELLBEING SERVICES</b>	Develop an interagency initiative to enhance mental health service knowledge exchange, visibility and provision, and engage young people in the development of an online mental health and wellbeing service guide
<b>COORDINATED HEALTH &amp; MENTAL HEALTH SUPPORTS FOR HOMELESS CHILDREN, YOUNG PEOPLE AND PARENTS</b>	Organise interagency collaboration to provide early intervention health & mental health supports for children, young people and parents in temporary homeless accommodation in Dún Laoghaire-Rathdown
<b>CULTURALLY SENSITIVE HEALTH AND MENTAL HEALTH SERVICES FOR TRAVELLER CHILDREN, YOUTH AND PARENTS</b>	Facilitate interagency collaboration to deliver effective prevention and early intervention health and mental health service provision delivered in culturally appropriate ways for Traveller children, young people and parents in Dún Laoghaire-Rathdown.
<b>INTERAGENCY SUPPORT FOR YOUNG PEOPLE WHO HAVE WITHDRAWN FROM SCHOOL DUE TO MENTAL HEALTH DIFFICULTIES</b>	Develop and evaluate a pilot interagency mental health and educational support programme for adolescents who have withdrawn from school due to mental health difficulties in Dún Laoghaire-Rathdown. (In collaboration with Dún Laoghaire-Rathdown CYPSC Education & Learning Subgroup)



Safety Subgroup

# Safety and Protected from Harm Subgroup Priority Actions

IDENTIFIED UNMET NEED	STRATEGIC PRIORITY ACTION AGREED
<p><b>ACCESS FOR PARENTS AND CHILDREN TO DOMESTIC ABUSE CRISIS INTERVENTION SERVICES IN DLR</b></p>	<p>Facilitate an interagency planning process to secure a Domestic Abuse Crisis Intervention Services including a refuge and wraparound services in Dún Laoghaire-Rathdown.</p>
<p><b>ACCESS FOR PARENTS AND CHILDREN TO AN EVIDENCE BASED RECOVERY PROGRAMME FROM DOMESTIC ABUSE</b></p>	<p>Interagency planning, implementation and evaluation of an evidence informed Child and Mother Recovery group programme in Dún Laoghaire-Rathdown.</p>
<p><b>FACILITATE SAFE VISITS BETWEEN CHILDREN AND SEPARATED PARENT</b></p>	<p>Facilitate an interagency planning process to establish community based contact locations to support children and young people to have safe and healthy contact with their non-resident separated parent.</p>
<p><b>SUPPORT SERVICES FOR MALE VICTIMS AND MALE PERPETRATORS OF DOMESTIC, GENDER BASED SEXUAL VIOLENCE</b></p>	<p>Collaborate with stakeholder services to identify and support the implementation of evidence based programmes to support male victim recovery from violence and abuse and to enable male perpetrators of violence to change violent attitudes and behaviour towards women and children.</p>





Educational Subgroup Meeting May 2019

# Education and Learning Subgroup Priority Actions

IDENTIFIED UNMET NEED	STRATEGIC PRIORITY ACTION AGREED
<b>EARLY INTERVENTION SUPPORTS FOR CHILDREN WITH SOCIAL-EMOTIONAL-BEHAVIOURAL DIFFICULTIES IN EARLY YEARS</b>	Support and evaluate a pilot of 'Nurture' rooms in Dún Laoghaire-Rathdown Early Years Childcare and Education services as an early intervention initiative to support the wellbeing of young children in need of extra supports.
<b>IMPROVEMENT OF CHILD AND YOUTH SOCIAL EMOTIONAL WELLBEING IN SCHOOLS &amp; COMMUNITIES</b>	Work with interagency stakeholders to identify current provision of evidence based Social Emotional Learning programmes, training, delivery partnerships & resources available to support implementation and evaluation.
<b>REMOVAL OF BARRIERS TO EDUCATION AND LEARNING FOR HOMELESS CHILDREN AND YOUNG PEOPLE</b>	Establish an interagency working group to identify the learning and educational needs, and to organise appropriate supports for children and young people in temporary homeless accommodation in Dún Laoghaire-Rathdown.
<b>POOR EDUCATIONAL OUTCOMES FOR TRAVELLER CHILDREN AND YOUNG PEOPLE IN DLR</b>	Organise an interagency educational event to understand how best to improve educational outcomes for Traveller children and young people.
<b>AN EVIDENCE INFORMED COUNTY WIDE INITIATIVE TO IMPROVE ONLINE SAFETY AND INFORMED BEHAVIOUR</b>	Support and evaluate a pilot interagency cybersafety training programme for 5th and 6th class primary school students, and pilot an online rapid response initiative to improve safe and informed behaviour online in a specific community in Dún Laoghaire-Rathdown.





Training event for educational services on using participatory methods with young people - 2019



**IDENTIFIED UNMET NEED**

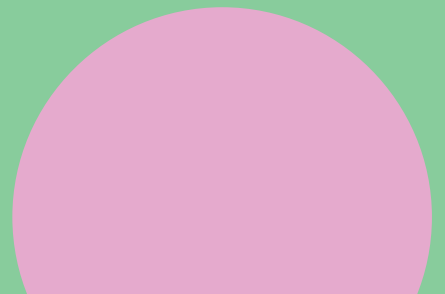
**STRATEGIC PRIORITY ACTION AGREED**

**SUPPORT CHILDREN AND YOUNG PEOPLE TO DEVELOP SAFE, HEALTHY RELATIONSHIPS**

Identify early intervention healthy relationships programmes with stakeholders for the early years, community based youth and school settings and promote HEA consent framework with third level educational and community based partners.

**SUPPORTS FOR CHILDREN AND YOUNG PEOPLE EXPERIENCING DIFFICULTIES WITH EDUCATIONAL TRANSITIONS**

Support interagency collaboration to plan event on educational Transitions, a Transition plan for the county's educational services, and a youth friendly website of support services.



Early Learning Through Play with Anna Newell Theatre Company





Parenting Subgroup

# Parenting Subgroup Priority Actions



## IDENTIFIED UNMET NEED

## STRATEGIC PRIORITY ACTION AGREED

**INFORMATION ON AVAILABLE PARENTING SUPPORTS IN DÚN LAOGHAIRE-RATHDOWN**

Support an interagency Parenting Support Subgroup to map and identify parenting supports and services in Dún Laoghaire-Rathdown to improve access to parenting support resources and services.

**SUPPORT SERVICES WORKING WITH PARENTS TO IDENTIFY NEEDS & IMPLEMENT EVIDENCE INFORMED RESPONSE**

Identify the support needs of parents at county and local level, link services into training/ evidence base of 'what works' in response to identified needs aligned with DCYA national parenting support framework.

**ENGAGE WITH DCYA PARENT SUPPORT UNIT**

Establish a positive and reciprocal relationship between DCYA Parent Support Unit & DLR CYPSC Parenting Subgroup.

**ACCESSIBLE EVIDENCE BASE AS TO 'WHAT WORKS' PARENTING SUPPORT**

Provide information, training and support to services involved in commissioning and/or delivering parenting support work in Dún Laoghaire-Rathdown to the evidence base of 'what works' with regards to parenting programmes and interventions.





Crosscare youth facilitators supporting a CYPSC consultation, 2018

# Participation/Young Leaders' Subgroup Priority Actions

IDENTIFIED UNMET NEED	STRATEGIC PRIORITY ACTION AGREED
<p><b>EMPOWER CHILDREN AND YOUNG PEOPLE EXPERIENCING HOMELESSNESS</b></p>	<p>Ethically and sensitively offer children, young people and parents experiencing homelessness the opportunity to express their lived experiences, needs and recommendations in ways that can improve services and outcomes.</p>
<p><b>PARTICIPATION OF CHILDREN AND YOUNG PEOPLE AS SERVICE USERS &amp; YOUNG CIVIC LEADERS</b></p>	<p>Develop an interagency rolling 'Young Leaders' participation forum to inform, listen and support young people to progress interagency projects with Dún Laoghaire-Rathdown CYPSC support where possible.</p>
<p><b>BUILD INTERAGENCY ORGANISATIONAL CAPACITY TO ENGAGE IN PARTICIPATORY PRACTISE WITH YOUNG SERVICE USERS</b></p>	<p>Organise a skill building initiative so services in Dún Laoghaire-Rathdown have the opportunity to learn more about models of participatory practise with children and young people and develop the skill set to implement these.</p>



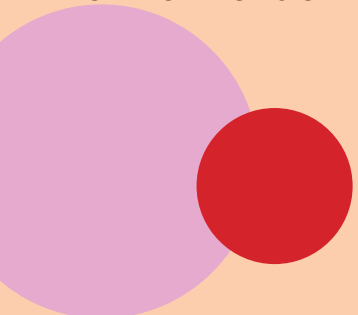
Young people working out together what are their priority needs in CYPSC consultation with Crosscare, 2018



Inaugural meeting of the DLR CYPSC Strategic Area Management Committee in August 2017

# Strategic Area Management Committee Priority Actions

IDENTIFIED UNMET NEED	STRATEGIC PRIORITY ACTION AGREED
<b>INFORMATION SHARING CHALLENGES</b>	Development of interagency protocols at senior management level for clarifying pathways and process for interagency collaboration & data sharing where feasible, particularly with regards to early intervention for at risk children and young people.
<b>STRATEGIC FOCUS ON CHILDREN AND YOUNG PEOPLE EXPERIENCING HOMELESSNESS</b>	Facilitate intersectoral senior managers to collaborate on actions to improve health, educational and safety outcomes for children and young people at risk of or living in homelessness.
<b>LACK OF JOINT COMMISSIONING OF RESEARCH &amp; SERVICES</b>	Interagency commissioning of research to gather useful data to guide commissioning of services including area based logic planning, sustainable funding and impact evaluation.



Minister for Children and Young People, Dr Katherine Zappone, discusses the work of DLR CYPSC with Lorna Kerin, DLR CYPSC, and Dearbhla Lawson, DLR County Council, 2019