



# Louth Child and Family Support Network Newsletter

## Details of Local Service delivery during COVID – 19



To update your service provision please email the Child Family Support Network Coordinators  
North Louth Paula McCabe [paula.mccabe1@tusla.ie](mailto:paula.mccabe1@tusla.ie) or  
South Louth AnnMarie Kidd [annmarie.kidd@tusla.ie](mailto:annmarie.kidd@tusla.ie)

## Louth Meath Child and Family Support Network Coordination Team



The Louth Meath Child and Family Support Network Coordination team are still open to and receiving PPFS referrals and Meitheal requests.

All Meitheal meetings are postponed at present. The CFSN Coordinators are linking with all Lead Practitioners on open Meitheal processes and ensuring they are contacting parents on an ongoing basis, identifying any needs during COVID-19.

The Louth Meath CFSN Coordination team will continue to link in by phone and email with CFSN members in their Network. Sharing information constantly, updating service provision and identifying gaps and needs .

### **North Louth Child and Family Support Network Coordinator**

**Contact: Paula McCabe**

**Phone: 087 7218112**

### **South Louth Child and Family Support Network Coordinator**

**Contact: Annmarie Kidd**

**Phone: 087 6542139**

**Tusla Parenting Support Website: [www.parenting24seven.ie](http://www.parenting24seven.ie)**

To update your service provision please email the Child Family Support Network Coordinators  
North Louth Paula McCabe paula.mccabe1@tusla.ie or  
South Louth AnnMarie Kidd annmarie.kidd@tusla.ie

## Louth Meath Prevention Partnership and Family Support



### Louth PPFS Family Support Practitioner Team

The North Louth Family Support Practitioner service delivery is continuing through phone contact with families, on a weekly basis. The allocated PPFS worker will be the contact person for families that are open to the North Louth PPFS team.

If the family are not allocated to a Family Support Worker, please contact the office where a staff member will answer and direct your call to the relevant personnel, or send out a PPFS Referral form. Please leave your name and number on the answering machine if there is no staff available to take your call at that particular time.

### North Louth PPFS Springboard Family Support Team

**Team Leader:** Caroline Bowe

**Phone:** 042 9351680

### South Louth Family Support Team Southgate

**Team Leader:** Karen Byrne

**Phone:** 041 9875294

**Tusla Parenting Support Website:** [www.parenting24seven.ie](http://www.parenting24seven.ie)

To update your service provision please email the Child Family Support Network Coordinators  
North Louth Paula McCabe paula.mccabe1@tusla.ie or  
South Louth AnnMarie Kidd annmarie.kidd@tusla.ie

**MEMO - TUSLA Area Manager Louth Meath  
Grainne Sullivan  
COVID 19 SERVICE UPDATE**

During the current public health Crisis, Bernard Gloster CEO has made a decision to focus on the three critical areas including -

**1. Child Protection and Welfare Concerns**

Tusla continues to accept and respond to all referrals of reasonable grounds for child protection or welfare concern.

This can be done via the secure portal on the Tusla Website or by contacting us at our:

**Dedicated Point of Contact at Tel 046 9098560.**

**2. Support to Children in Care & After Care**

Louth Meath are responsible for 410 children in care, the majority who live with foster families with a small number living in residential centres. We continue to provide support to all of these children and their parents during this difficult time.

We are working on an emergency foster carer plan as the current crisis will potentially have an impact of foster carer availability.

**3. Domestic, Sexual & Gender Based Violence Services**

Tusla funded Domestic, Sexual & Gender Based Violence Services provide free and confidential services: emergency shelter, legal advocacy, support groups and domestic violence education. The services include-

- Women's Aid Helpline (24 hours) 1800 341900
- Rape Crisis Centre National Helpline (24 hours) 1800 778888
- Drogheda Women's Refuge: Refuge/Support Service Tel: 041 984 4550
- Women's Aid Dundalk: Refuge/Support Service Tel: 042 933 3244
- Meath Women's Refuge: Refuge/Support Service Tel: 046 902 2393
- Men's Aid Ireland (formally AMEN) : Support Service & Confidential Helpline – 01 554 3811 Email: [Hello@mensaid.ie](mailto:Hello@mensaid.ie)

To update your service provision please email the Child Family Support Network Coordinators  
North Louth Paula McCabe paula.mccabe1@tusla.ie or  
South Louth AnnMarie Kidd annmarie.kidd@tusla.ie

**MEMO - TUSLA Area Manager Louth Meath  
Grainne Sullivan  
COVID 19 SERVICE UPDATE**

While the above three areas have been prioritised, Tusla continue to provide the following -

**4. Tusla Education Support Service (tess)**

Tess has three strands namely the Statutory Educational Welfare Service (EWS) and the two school support services the Home School Community Liaison Scheme (HSCL) and the School Completion Programme (SCP). Tess continues to provide supports to families during this time and have worked with the Department of Education to ensure that School Lunches have been made available to DEIS schools. There are 4 EWO's who are working remotely at present. They are maintaining contact with the families and are liaising with other professionals who are involved with these families.

**Senior Manager:** [Georgina.traynor@tusla.ie](mailto:Georgina.traynor@tusla.ie) Tel 087-7601955

**5. Prevention, Partnership and Family Support**

The Family Support Teams are continuing to provide remote support to families & are also supporting their colleagues on their more critical work. The Child and Family Support Networks (CFSN) have developed a community response plan which will now align where appropriate with the county council plans. Some of the key areas being progressed are –

- Audit of current service delivery in the Community and Voluntary Sector to ensure that information is shared across the network
- Targeted families in need of practical support
- Delivering play packs to targeted families & sharing of key resources to children / parents on internet safety / safety card etc.
- The Tusla funded services across Louth Meath continue to provide support in line with Public Health advice

To update your service provision please email the Child Family Support Network Coordinators  
North Louth Paula McCabe paula.mccabe1@tusla.ie or  
South Louth AnnMarie Kidd annmarie.kidd@tusla.ie

**MEMO - TUSLA Area Manager Louth Meath  
Grainne Sullivan  
COVID 19 SERVICE UPDATE**

**6. Children and Young Peoples Service Committee**

The Louth & Meath CYPSC have developed a response plan which will now align where appropriate with the County Council Plans. The key areas being progressed are –

- Audit of Service Delivery in the Statutory Sector to ensure that information is shared across the network
- Service Activity at a local level including work on Hidden Harm, Positive Play, Mental Health Toolkits in including bereavement resources, Physical Activity for children, NVR- Key Messages communique.
- Sharing of information/Communication between CPYSC Members, the PPN and the development of resources on internet safety / safety card
- There is Regional Collaboration on finalising a Critical Incident Protocol.

**Tusla also provide Early Years Inspection Services and Adoption Services.**

**Grainne Sullivan, Area Manager 2 April 2020**

## Louth Children and Young People's Services Committee

Children and Young people's Services committees (CYPSC) are a key structure identified by Government to plan and coordinate services for children and young people in every county in Ireland. The overall purpose is to improve the outcomes for children and young people through local and national interagency working.

Co. Louth CYPSC which was established in August 2010 brings together statutory, community and voluntary providers of services to children and young people. It provides a forum for joint planning and coordination of activity to ensure that children, young people and their families receive improved and accessible services. The role is also to enhance interagency cooperation and to realise the national outcomes set out in Better Outcomes Brighter Futures: the national policy framework for children and young people 2014-2020.

### **Membership of Louth CYPSC includes representatives from the following sectors and organisations:**

***Tusla the Child and Family Agency , Local Authority, HSE, LMETB, An Garda Siochana, Reps from C & V sector, 18-24 years old Rep, DKIT, IPPN, Connect Family Resource Centre, North East Regional Drug and Alcohol Task Force ,Louth County Childcare Committee, The Probation Service, DEASP, Louth LEADER Partnership, The Genesis Programme.***

Louth CYPSC has recently completed a three year Children and Young People's Plan (CYPP) 2019-2021 for Louth. Further information can be obtained on:

**Website:** [www.cypsc.ie](http://www.cypsc.ie)

To update your service provision please email the Child Family Support Network Coordinators  
North Louth Paula McCabe paula.mccabe1@tusla.ie or  
South Louth AnnMarie Kidd annmarie.kidd@tusla.ie



Youth Work Ireland  
Louth

## Craobh Rua Youth Project



Child and Family  
Support Network

Craobh Rua Youth Project in Dundalk are continuing to engage with young people through digital youth work. They are using zoom for programmes and activities. Youth workers are delivering Care and programme packages to their young people to ensure that they continuing to engage at home. Youth workers are using Instagram, snapchat, whatsapp and Facebook to share factual information; daily challenges; competitions and encouraging young people as well as parents to use some relaxation tips to build on their resilience and coping skills.

### Contact details

**Regional Director** - Caroline Flanagan: [Caroline@lyf.ie](mailto:Caroline@lyf.ie)

**Craobh Rua Youth Workers:** [roisin@lyf.ie](mailto:roisin@lyf.ie) or [Julie@lyf.ie](mailto:Julie@lyf.ie)

### Workers based in Cooley Peninsula:

[erin@lyf.ie](mailto:erin@lyf.ie) or [coreproject@lyf.ie](mailto:coreproject@lyf.ie) (Detached Youth Work)

To update your service provision please email the Child Family Support Network Coordinators  
North Louth Paula McCabe [paula.mccabe1@tusla.ie](mailto:paula.mccabe1@tusla.ie) or  
South Louth AnnMarie Kidd [annmarie.kidd@tusla.ie](mailto:annmarie.kidd@tusla.ie)





Child and Family  
Support Network

## Boomerang Youth Cafe



Boomerang Youth Café are closed in line with the response to COVID 19. Youth workers are in contact young people through phone calls and ZOOM room Private Groups.

**Email:** [Teresa.boomerang@gmail.com](mailto:Teresa.boomerang@gmail.com)

To update your service provision please email the Child Family Support Network Coordinators  
North Louth Paula McCabe paula.mccabe1@tusla.ie or  
South Louth AnnMarie Kidd annmarie.kidd@tusla.ie



## Youth Work Ireland Louth



Community Based projects Southside CYP, Boyne GYDP, CORE- Sign posting & engagement, Irish Youth Music Awards TEAM Louth, Youth Network for Peace & AMPLIFY projects continue to provide on-going support with programmes online using the Digital Youth work model. Within this model Youth workers use the medium of social media like messenger, snapchat, Facebook, Instagram to communicate with young people. 1:1 sessions and group work can be conducted using the Zoom chat app in which multiple young people can join in and receive the support that they require.

At Youth Work Ireland Louth we are striving to provide constant and consistent support for our young people in these uncertain times... online Digital Youth work at its best.

### **Southside Community Youth Project**

**Email:** [monica@lyf.ie](mailto:monica@lyf.ie) or [Keith@lyf.ie](mailto:Keith@lyf.ie)

### **BOYNE Garda Youth Diversion Project (GYDP)**

**Email:** [nicola@lyf.ie](mailto:nicola@lyf.ie) or [denise@lyf.ie](mailto:denise@lyf.ie)

To update your service provision please email the Child Family Support Network Coordinators  
North Louth Paula McCabe [paula.mccabe1@tusla.ie](mailto:paula.mccabe1@tusla.ie) or  
South Louth AnnMarie Kidd [annmarie.kidd@tusla.ie](mailto:annmarie.kidd@tusla.ie)

## ISPCC Drogheda

The Drogheda ISPCC centre is currently closed to the public. ISPCC support staff are currently working and offering ISPCC services remotely.

All staff have work mobiles which are on during working hours. The contact is Tina Russell on 087 433 0441 and Robert Byrne on 087 140 9276 . All staff also have access to work emails through our remote access system.

All clients and their families open to our service currently receive regular weekly contact via phone and skype to maintain the support and intervention work developed to date.

All staff are contactable on their work phones which any potential referrer can contact during working hours to discuss cases, concerns or referrals.

There is a national support line service which Louth/Meath users can contact also. This service is for parents and young people to call regarding any concerns they might have. The contact number changes daily and can be found on the ISPCC website, [www.ispcc.ie](http://www.ispcc.ie)

## AMPLIFY Peace Project

AMPLIFY are still receiving referrals for young people between 14 - 25. The project provides a platform for young people to select programmes based on their individual needs and interests. AMPLIFY is currently delivering its programmes through Digital Youth Work which includes the following:

- Make up
- Beauty
- Hygiene and Hair.

Our project workers meet the needs of the young people virtually through different resources such as Facebook, zoom, snapchat, Whatsapp, SurveyMonkey while also continuing to provide individual support to each young person.

### Amplify Youth Project

Email: [emma.carroll@foroige.ie](mailto:emma.carroll@foroige.ie) or [eainne.donohoe@foroige.ie](mailto:eainne.donohoe@foroige.ie)



## CABLE PROJECT MONEYMORE

Cable Project are providing ongoing supports via online platforms and phone contact for young people currently linked to Cable.

### Contact

Allen or Jenny on 0860488983

[allen.odonoghue@foroige.ie](mailto:allen.odonoghue@foroige.ie) or [jenny.deegan@foroige.ie](mailto:jenny.deegan@foroige.ie)

[april.dooley@foroige.ie](mailto:april.dooley@foroige.ie) or [shane.ryan@foroige.ie](mailto:shane.ryan@foroige.ie)

To update your service provision please email the Child Family Support Network Coordinators North Louth Paula McCabe  
[paula.mccabe1@tusla.ie](mailto:paula.mccabe1@tusla.ie) or South Louth AnnMarie Kidd  
[annmarie.kidd@tusla.ie](mailto:annmarie.kidd@tusla.ie)



## **The house**

Cox's Demesne Youth & Community Project Ltd

# **Cox's Demesne Youth and Community Project**



**Child and Family  
Support Network**

Cox's Demesne Youth and Community Project in Dundalk are continuing to engage with young people and families they support. This involves face timing young people; one to one mentoring; delivering packs with games and art to their homes and linking in with parents. Cox's YCP are creating an afterschool Facebook page where there will be regular group activities.

The North Dundalk Family Support Hub Worker is in contact with all the families this project supports.

To update your service provision please email the Child Family Support Network Coordinators  
North Louth Paula McCabe [paula.mccabe1@tusla.ie](mailto:paula.mccabe1@tusla.ie) or  
South Louth AnnMarie Kidd [annmarie.kidd@tusla.ie](mailto:annmarie.kidd@tusla.ie)



## Rape Crisis North East Centre



The Rape Crisis Centre **Freephone** helpline number is open those who need access to crisis counselling and support

Monday – Friday 10.00am – 4.00pm for

Contact: 1800 21 21 22

For existing clients of the Rape Crisis Centre – The Therapist will make contact to arrange counselling appointments over the phone. Contact [manager@rcne.ie](mailto:manager@rcne.ie) for further information.

For New Clients – to arrange an appointment email [manager@rcne.ie](mailto:manager@rcne.ie) or phone 1800 21 21 22

To update your service provision please email the Child Family Support Network Coordinators  
North Louth Paula McCabe paula.mccabe1@tusla.ie or  
South Louth AnnMarie Kidd annmarie.kidd@tusla.ie



# Mental Health Ireland



Mental Health Ireland have a range of information available useful links on [www.mentalhealth.ie](http://www.mentalhealth.ie)

Mental Health Ireland staff are working from home so you can contact them by email directly - <https://www.mentalhealthireland.ie/our-staff/> or via [info@mentalhealthireland.ie](mailto:info@mentalhealthireland.ie)

The HSE Mental Health Information line is **1800 111 888**

**Samaritans helpline** 116 123 or email [jo@samaritans.ie](mailto:jo@samaritans.ie)

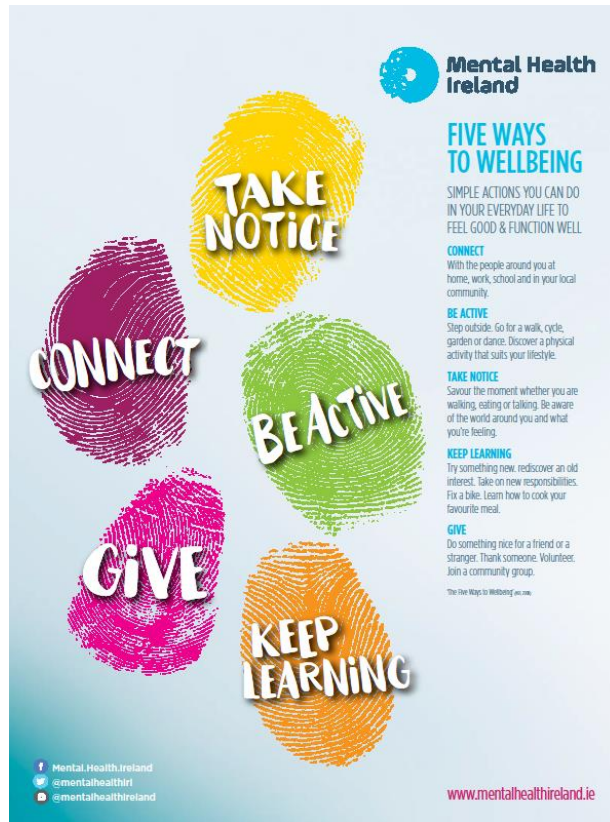
Mental Health Ireland urges people to stay connected and informed amid Covid 19: <https://www.mentalhealthireland.ie/news-events/wellbeing-covid19/>

Tips for keeping your mental health balanced during this time: <https://www.youtube.com/watch?v=sE5yTNIHBmw>

To update your service provision please email the Child Family Support Network Coordinators  
North Louth Paula McCabe paula.mccabe1@tusla.ie or  
South Louth AnnMarie Kidd annmarie.kidd@tusla.ie



## Five ways to wellbeing poster



<https://www.mentalhealthireland.ie/wp-content/uploads/2019/11/MHI-Five-Ways-to-Wellbeing-Poster.pdf>

07/04/2020

## Five ways to wellbeing leaflet



<https://www.mentalhealthireland.ie/wp-content/uploads/2019/11/MHI-5-ways-to-wellbeing-leaflet.pdf>

To update your service provision please email the Child Family Support Network Coordinators  
North Louth Paula McCabe paula.mccabe1@tusla.ie or  
South Louth AnnMarie Kidd annmarie.kidd@tusla.ie



Child and Family  
Support Network

# Mental Health Supports



## Shine Northeast

Shine in the Northeast will continue to provide support during COVID – 19.

**Contact:** Derek Pepper, Regional Development Officer

**Phone:** 086 8525422

**Email:** [northeast@shine.ie](mailto:northeast@shine.ie)

Shine's support services are available to anybody over 18 years of age.

---

## Grow

All Grow weekly support groups are postponed until further notice however if you need support please contact Grow

**Phone:** 1890 474 474

**Email:** [info@grow.ie](mailto:info@grow.ie)

---

## SOSAD Dundalk

SOSAD offices are currently closed for face to face appointments and walk in's. The 24 hour helpline is still open and will continue to be open throughout the COVID -19 Pandemic. SOSAD are advising people to ring as often as needed.

**Phone:** 042 9327311.

---

## Samaritans

Call **FREE** day or night: 116 123

Email: [jo@samaritans.ie](mailto:jo@samaritans.ie)

Website: [www.samaritans.ie](http://www.samaritans.ie)

---

To update your service provision please email the Child Family Support Network Coordinators  
North Louth Paula McCabe paula.mccabe1@tusla.ie or  
South Louth AnnMarie Kidd annmarie.kidd@tusla.ie

# Louth GAA COVID 19 Response



Child and Family  
Support Network

The poster features the Louth GAA logo at the top left. The main title is 'COVID-19 Response Louth Club Contacts'. It is divided into four regional contact boxes: North Louth, East Louth, South Louth, and West Louth. In the center, there is a flowchart titled 'NATIONAL SUPPORT HELPLINE HOW WE OPERATE' with four steps: 1. Request help via helpline (text/call), 2. Request categorized and assigned to a regional coordinator, 3. Coordinator assigns ticket to a volunteer/group, and 4. Support request is closed. At the bottom right, there is a harp logo with 'LEINSTER' written below it.

## COVID-19 Response Louth Club Contacts

### North Louth Region

**Clan Na Gael - Niall Weldon** - 0872956573  
**Cooley Kickhams - Brian Rafferty** - 0851684655  
**Na Piarsigh - Gerry McGee** - 0877500414  
**Roche Emmets - Aine Rice** - 0876313429  
**St. Patricks - Padraic O' Connor** - 0872397137

### East Louth Region

**O' Connells - Aidan Murtagh** - 0872579625  
**Anthony Agnew** - 0879272863  
**Brian Kearney** - 0872841895  
**St. Kevins - Bob Doheny** - 0860489775

### South Louth Region

**Glen Emmets - Joey Carolan** - 0878339568  
**Catrina Tuite** - 0863203675  
**Jack Carolan** - 0872316722  
**Hunterstown Rovers - Amanda Lane** - 0894248931  
**Mattock Rangers - Terry Donegan** - 0876405305  
**Mark Leacy** - 0868570564  
**Earnan Roche** - 0879872874  
**Naomh Mairtin - Linda Donaghoe** - 0861936349  
**Newtown Blues - Gillian Harte** - 0877951477  
**Orlaith Nugent** - 0868140876  
**Oliver Plunketts - Jeff Finnegan** - 0876409549  
**St. Nicholas - Des McDonald** - 0862063113  
**Wolfe Tones - Patrick Fanning** - 0874681644

### West Louth Region

**Glyde Rangers - Anthony Nulty** - 0877639043  
**Kilkerley Emmets - Cathal Bellew** - 0858783433  
**Naomh Malachi - Aidan Fee** - 0858672406  
**Donna Daly** - 0863770718  
**Emma McArdle** - 0874364816  
**Roche Emmets - Aine Rice** - 0876313429  
**Sean McDermotts - Kevin Carroll** - 0871344157  
**St. Brides - Niamh Sweeney** - 0864017098  
**St. Mochtas - Orla O'Neill** - 0879800284  
**Niamh Kirk** - 0833653921  
**Aidan Murtagh** - 0872579625  
**Westerns - Frank Scriven** - 0877979878

### NATIONAL SUPPORT HELPLINE HOW WE OPERATE

1. REQUEST HELP VIA HELPLINE  
TEXT 086 180 0256  
CALL 021 237 7809
2. REQUEST IS CATEGORISED AND ASSIGNED TO REGIONAL COORDINATOR (EXAMPLE - MEMBER OF THE PUBLIC NEEDS GROUPEES DELIVERED - COLLECT & DROP OFF)
3. COORDINATOR ASSIGNS TICKET TO VOLUNTEER/GROUP (LOCAL AUTHORITY TEAM, CHARITIES, LOCAL VOLUNTEER GROUP)
4. SUPPORT REQUEST IS CLOSED

To update your service provision please email the Child Family Support Network Coordinators  
North Louth Paula McCabe paula.mccabe1@tusla.ie or  
South Louth AnnMarie Kidd annmarie.kidd@tusla.ie



# **Na Piarsaigh CPG**

## **COVID - 19**

### **Community Support**



In light of recent events Na Piarsaigh CPG have put together a local support group to help out those most affected by the COVID-19 Pandemic in the Holy Family Parish.

If you are aware of someone who is vulnerable, elderly or isolated and may need assistance, we as a club can help provide access to groceries, medication, fuel ect.

In times like these we need to stick together as a community and look out for those who are most at risk. This is a perfect example of how we can come together in times of need and where the GAA and other community organisations prove their worth to the members and communities that have supported them along the way!

You can avail of this service either by contacting this social media page or contacting: Gerry McGee - 087 7500 414 or Peter Begley - 087 231 0218

To update your service provision please email the Child Family Support Network Coordinators  
North Louth Paula McCabe paula.mccabe1@tusla.ie or  
South Louth AnnMarie Kidd annmarie.kidd@tusla.ie



**LOUTH LEADER PARTNERSHIP**  
Building Community & Enterprise



**DUNDALK LOCAL  
EMPLOYMENT SERVICE**

**CONTINUES TO  
PROVIDE THE  
FOLLOWING  
SERVICES**

- We can hold a telephone appointment
- We can update your C.V.
- Print out your C.V. and post to you
- Post out your C.V. to employers

Employers can contact us at the above number



**042-9328897**

**Opening Hours**  
**Monday to Friday**  
**10.00 - 1.00pm**



**Child and Family  
Support Network**

To update your service provision please email the Child Family Support Network Coordinators  
North Louth Paula McCabe paula.mccabe1@tusla.ie or  
South Louth AnnMarie Kidd annmarie.kidd@tusla.ie



## Family addiction Support Network

All Family Addiction Support Network group meetings are postponed for now but phone support is available.

Coordinator: Gwen McKenna

Contact: 042 9355251 / 087 9046405

Catchment areas:

Louth Meath, Cavan and Monaghan

Website: [www.fasn.ie](http://www.fasn.ie)

 <p><b>CALM</b></p> <p>Calm is the #1 app for meditation and mindfulness. Manage your anxiety, lower stress and sleep better using Calm's guided meditations, sleep stories, breathing programs, and relaxing music.</p>	 <p><b>SOBER GRID</b></p> <p>Sober Grid connects you to sober people in your community and around the globe so you can build a strong sober support network and inspire others.</p>	 <p><b>DAYLIO</b></p> <p>Daylio enables you to keep a private diary without having to type a single word. Pick your mood and track your activities to help establish new healthy habits and increase productivity.</p>
 <p><b>SELF-HELP FOR ANXIETY MANAGEMENT</b></p> <p>If you're interested in self-help, but meditation isn't your thing, the SAM app offers a range of self-help techniques for people who are serious about learning to manage their anxiety.</p>	<p><b>FREE MENTAL HEALTH &amp; ADDICTION APPS</b></p> <p>Available on iOS and Android</p>	 <p><b>NO MORE!</b></p> <p>Embark on a self-improvement journey with No More! If you're trying to overcome a bad habit or serious addiction No More! can help you conquer it.</p>
 <p><b>HEADSPACE</b></p> <p>Headspace is meditation made simple. Learn the life-changing skills of meditation and mindfulness in just a few minutes each day.</p>	 <p><b>SOBER TIME</b></p> <p>Sober Time helps you stay motivated by tracking how long you have been sober. If you're trying to quit drinking, drugs or any other addiction, put the power of sobriety back in your hands.</p>	 <p><b>WHAT'S UP?</b></p> <p>What's Up? provides helpful tools based on the principals of Cognitive Behavioural Therapy and Acceptance Commitment Therapy to help you cope with Depression, Anxiety, Anger, Stress and more.</p>

To update your service provision please email the Child Family Support Network Coordinators

North Louth Paula McCabe paula.mccabe1@tusla.ie or

South Louth AnnMarie Kidd annmarie.kidd@tusla.ie

# Turas Counselling Centre



Child and Family  
Support Network

## COVID-19 Update

### **TURAS IS CURRENTLY OPEN AND ACCEPTING REFERRALS.**

Turas is a Dundalk based community addiction service providing one-to-one, group and other supports to people both active in addiction and those in recovery.

If you are currently struggling with an addiction or are in recovery from an addiction and fearful of a relapse please contact us and we can provide regular support to you.

Please call 042 9338221 or email [info@turascounselling.ie](mailto:info@turascounselling.ie) to get support.

One of our team will be in touch within 24 hours to offer you a telephone assessment. All of our supports are currently being offered over the phone.

-Nicki and the Turas team

# turas

We're here for you at every  
stage of your journey

CHY 22271

To update your service provision please email the Child Family Support Network Coordinators  
North Louth Paula McCabe [paula.mccabe1@tusla.ie](mailto:paula.mccabe1@tusla.ie) or  
South Louth AnnMarie Kidd [annmarie.kidd@tusla.ie](mailto:annmarie.kidd@tusla.ie)



Feidhmeannacht na Seirbhíse Sláinte  
Health Service Executive

## Substance Use Support for Teens (SUST)



Child and Family  
Support Network

The substance use support service for teens are avoiding face to face sessions with young people however they may still see some young people if there is significant concerns. However there is a challenge in their ability to access locations as some youth services and schools where they used to see young people are closed.

Most of their contact is becoming phone contact as a result. Face to face sessions will only be possible in their main premises at:

*Drogheda Industrial Park, Donore Road, Drogheda, Co. Louth.*

Families can continue to contact:

Philip James 087 3752760 or Lorraine Wright 087 173 2088.

To update your service provision please email the Child Family Support Network Coordinators  
North Louth Paula McCabe [paula.mccabe1@tusla.ie](mailto:paula.mccabe1@tusla.ie) or  
South Louth AnnMarie Kidd [annmarie.kidd@tusla.ie](mailto:annmarie.kidd@tusla.ie)



# Barnardos National Parent Support Service - Response to Covid-19 Pandemic

Barnardos provides practical and emotional supports to children and parents in its 41 centres, in families' own homes, through the school environment, and within communities across Ireland. Last year we worked with over 20,000 children, young people and their families. Given our expertise in providing a wide variety of supports to families and children, Barnardos have launched a national telephone and email support service for parents in response to the challenges they are facing during the Covid-19 pandemic.



The government's response to Covid-19 has meant that normal routines and sources of support are currently unavailable to many families. Through our dedicated telephone and email support service Barnardos staff can provide support and advice to parents on the following issues:

- How to talk to your children about the corona virus
- Setting a good routine
- Managing children's behaviours and sibling dynamics
- Managing aggression and family discord
- Home schooling/managing school expectations.
- Fostering natural learning opportunities in the home
- Healthy eating
- Accessing fun and educational activities for families and individual children
- Managing your child's worries
- Self-care for parents
- Helping parents manage their own worries and anxieties
- Managing children's online activity

**Phone:** 1800 910 123 between 10.00am and 2.00pm Monday to Friday

**Email:** [parentsupport@barnardos.ie](mailto:parentsupport@barnardos.ie).



To update your service provision please email the Child Family Support Network Coordinators  
North Louth Paula McCabe paula.mccabe1@tusla.ie or  
South Louth AnnMarie Kidd annmarie.kidd@tusla.ie

# Support Services and Helplines

## ISPCC

Childline is Ireland's 24-hour national listening service for all children and young people (under the age of 18) in Ireland. It is private, confidential and non-judgemental and can be contacted for free from anywhere in Ireland. Childline can be contacted by any child or young person by **calling 1800 66 66 66** (24 hours a day), **texting to 50101** (10am – 4am daily) or **chatting online at [Childline.ie](https://www.childline.ie)** (10am – 4am every day).



Childline calls, webtexts and messages are still up and running and will remain open during the crisis.



---

## Womens Aid

Women's Aid Dundalk are still operational, they are adapting their service to still meet the needs for women and children during this time when the risk of domestic abuse is very much heightened. Contact can be made through their Facebook page, Twitter and the following contact details:

24 hour helpline:- 042 9333244

Email: [info@womensaidlk.net](mailto:info@womensaidlk.net)

Women's Aid at present still have refuge support.

Their charity shop No 11 Accessible's is closed until further notice.

Court Clinic continues on Wednesday and Thursday mornings.

The Playroom Project has closed until further notice.

Play therapy has stopped until further notice.

One to one, face to face services have stopped until further notice. They are providing telephone support.



To update your service provision please email the Child Family Support Network Coordinators  
North Louth Paula McCabe [paula.mccabe1@tusla.ie](mailto:paula.mccabe1@tusla.ie) or  
South Louth AnnMarie Kidd [annmarie.kidd@tusla.ie](mailto:annmarie.kidd@tusla.ie)

# Support Services and Helplines



## HSE COVID 19 Helpline

**Callsave:** 1850 24 1850 or **Phone:** 041 6850300

**Tweet:** @HSELive

**Open:** Monday to Friday: 8am - 8pm Saturday and Sunday: 9am - 5pm

---

## HSE Helpline for pregnant Women

The HSE have set up a dedicated helpline for pregnant women who have questions and concerns about COVID 19

**Contact:** 086 7756961 Monday – Friday 10am – 3pm

---

## Gary Kelly Cancer Support Centre

Centre is currently closed but are still providing a helpline support service to anyone affected by cancer. Telephone Support Service.

**Contact:** 086 8202447 / 086 3870277 Monday – Friday 11am – 3pm

**Email:** [aileen@gkcancersupport.com](mailto:aileen@gkcancersupport.com) or [ann@gkcancersupport.com](mailto:ann@gkcancersupport.com)

---

## Pieta House Suicide Bereavement Liaison Service

The Pieta House Suicide Bereavement Liaison Service continues to be available however it is only phone support at present.

**Contact person for Louth Meath:** Catherine Brazil

**Contact number:** 085 7380444

To update your service provision please email the Child Family Support Network Coordinators  
North Louth Paula McCabe [paula.mccabe1@tusla.ie](mailto:paula.mccabe1@tusla.ie) or  
South Louth AnnMarie Kidd [annmarie.kidd@tusla.ie](mailto:annmarie.kidd@tusla.ie)

# Support Services and Helplines



## **Dundalk Counselling Centre**

Dundalk Counselling Centre is closed for all one to one therapy sessions until further notice. The Centre is keeping in touch over email and messenger with any clients looking for direction to available remote services, we are not providing a remote service.

**Centre Manager:** Elizabeth McGuckin

**Contact:** 042 9338333

---

## **Save Our Homeless Dundalk**

Aiding the homeless, elderly and anyone that needs support in Dundalk.

**Contact:** 089 4627311.

---

## **Dunnes Stores Supporting Cocooning shopping hours**

Dunnes stores are continuing to offer priority shopping hours for carers or anyone who is shopping on behalf of an elderly person or neighbour. The hours are still a priority for 60 – 70 year olds who have not been instructed to cocoon.

**Priority Hours:** 11am – 1pm daily

To update your service provision please email the Child Family Support Network Coordinators  
North Louth Paula McCabe paula.mccabe1@tusla.ie or  
South Louth AnnMarie Kidd annmarie.kidd@tusla.ie

# Support Services and Helplines



## Louth Volunteer Centre

Louth Volunteer centre are urging local organisations who are seeing an increase in demand for their services or a potential drop in their ability to deliver their service to contact them for support in recruiting volunteers.

**Website:** [www.volunteerlouth.ie](http://www.volunteerlouth.ie)

**Manager:** Grainne Berrill

North Louth Volunteer Centre Services:

**Contact person:** Kayleigh Mulligan

**Email:** [info@volunteerlouth.ie](mailto:info@volunteerlouth.ie) or **Phone:** 086 0431379.

---

## ALONE

Supports older people to age at home.

**Helpline:** 0818 222 024 open 8.00am – 8.00pm

**Louth Telephone:** 042 933 0103

**Email:** [hello@alone.ie](mailto:hello@alone.ie)

---

## Outcomers Dundalk

Outcomers are continuing to offer support via phone, email, social media and virtual youth groups.

**Contact:** Lorna Costello

**Phone:** 086 1625030

**Email:** [youth@outcomers.org](mailto:youth@outcomers.org)

To update your service provision please email the Child Family Support Network Coordinators  
North Louth Paula McCabe [paula.mccabe1@tusla.ie](mailto:paula.mccabe1@tusla.ie) or  
South Louth AnnMarie Kidd [annmarie.kidd@tusla.ie](mailto:annmarie.kidd@tusla.ie)

# Support Services and Helplines

The logo for LGBT Ireland, featuring a rainbow-colored circle with a white center and the text "LGBT IRELAND" in black to its right.

**NEED TO TALK?**  
Help is just a phone call away

The logo for the LGBT Helpline, featuring the text "LGBT HELPLINE" in green and yellow. <p><b>LGBT Helpline</b> <b>1890 929 539</b> Monday to Thursday: 6:30pm - 10pm Fridays: 4pm - 10pm Saturday and Sunday: 4pm - 6pm</p>	The logo for Women's Aid, featuring a globe with a woman's silhouette. <p><b>Women's Aid</b> <b>Women's Aid</b> <b>1800 341 900</b> 24hrs 7 days a week Text Service available daily on <b>087 959 7980</b></p>
The logo for ALONE, featuring the word "ALONE" in white on a red background. <p><b>ALONE</b> Supporting older people to age at home <b>0818 222 024</b> COVID-19 helpline for older people Everyday 8am-8pm</p>	The logo for The Gender Identity Family Support Line, featuring two overlapping speech bubbles in blue and pink. <p><b>The Gender Identity Family Support Line</b> <b>01 907 3707</b> Sundays: 6pm - 9pm Tuesdays: 10am - 12pm</p>
The logo for RCC, featuring a stylized '@' symbol and the text "RCC". <p><b>RCC</b> <b>Rape Crisis Helpline</b> <b>1800 77 88 88</b> 24hrs 7 days a week</p>	The logo for HSE Live, featuring the text "HSE Live" in a green speech bubble. <p><b>HSE Live</b> <b>HSE helpline</b> <b>1850 24 1850</b> Monday to Friday: 8am - 8pm Saturday and Sunday: 10am - 5pm</p>
The logo for ISPCC Childline, featuring the text "ISPCC Childline" in red and black. <p><b>ISPCC Childline</b> <b>ISPCC Childline</b> <b>1800 66 66 66</b> 24hrs 7 days a week</p>	The logo for Samaritans, featuring the word "SAMARITANS" in green inside a white box. <p><b>Samaritans</b> <b>116 123</b> 24hrs 7 days a week</p>

To update your service provision please email the Child Family Support Network Coordinators  
North Louth Paula McCabe paula.mccabe1@tusla.ie or  
South Louth AnnMarie Kidd anmarie.kidd@tusla.ie



# An Garda Síochána



Chief Superintendent Christy Mangan issued a statement informing the community that the Louth Garda Division wish to advise our communities that during these challenging times, we are continuing to provide a fully resourced Police service working on a 24 hour service. If you have any concerns for yourself, or a family member, neighbour or a vulnerable person, please do not hesitate to make contact with us in order to obtain assistance. We are providing assistance to the most vulnerable in ensuring that they can obtain essential goods from local shops. If possible, make contact by telephone, in order to adhere to social distancing, but if you need to call to a Garda Station, please do.

Please make contact on the following telephone numbers for assistance:

**Drogheda Garda Station:** 0419874200

**Dundalk Garda Station:** 0429388400,

**Ardee Garda Station:** 0416853222.

## Community Policing:

Dundalk Garda Station Community Policing Unit are offering support to the elderly and sick in the community. If you require any support you can contact the Community Policing Unit in Dundalk Garda Station.

**Phone:** 042 9335577 or 042 9388400 **Community Policing extensions:** 4477, 4478 & 4479

## An Garda Síochána in Louth is here to Serve you

To update your service provision please email the Child Family Support Network Coordinators  
North Louth Paula McCabe [paula.mccabe1@tusla.ie](mailto:paula.mccabe1@tusla.ie) or  
South Louth AnnMarie Kidd [annmarie.kidd@tusla.ie](mailto:annmarie.kidd@tusla.ie)



Comhairle Contae Lú  
Louth County Council

## Louth County Council Library Services



Library e-services such as e-books, audio books, magazines, newspapers etc. Our Facebook page will also have information on libraries and general community info as well

Phone: 042 935 3190

Email: [libraryhelpdesk@louthcoco.ie](mailto:libraryhelpdesk@louthcoco.ie)

Website: <http://www.louthcoco.ie>

To update your service provision please email the Child Family Support Network Coordinators  
North Louth Paula McCabe [paula.mccabe1@tusla.ie](mailto:paula.mccabe1@tusla.ie) or  
South Louth AnnMarie Kidd [annmarie.kidd@tusla.ie](mailto:annmarie.kidd@tusla.ie)





# The Community Call

in response to Covid-19, the Government has launched “**The Community Call**”, a major initiative that links local and national government with the community and voluntary sectors. The Community Call is an unprecedented mobilisation of both state and voluntary resources to combat the effects of Covid-19. The purpose of the Community Call is to coordinate community activity and community assistance to where it is needed.

The immediate focus is on the elderly and the most vulnerable, and mobilising rapid response in every county to make sure everyone is looked after. In the coming weeks the focus will expand to broaden the wellbeing of our society and how communities can work together to help the country through the Covid-19 crisis.

The Community Call will be overseen and managed locally by Local Authorities. Led by the Local Authorities Chief Executives, the dedicated community Forum in each county will coordinate and connect the wide range of services and supports available in their specific areas. The forum involves an extensive list of state and voluntary organisations. A dedicated phone line is now operational in every county and the national number **0818 222 024** is also now in operation.

**Click on the following link for COVID 19 Community Response For a Local Authority Helplines:**

[https://volunteersouthdublin.ie/wp-content/uploads/2019/07/COVID\\_19-Local-Authority-Community-Response-Contact-Information.pdf](https://volunteersouthdublin.ie/wp-content/uploads/2019/07/COVID_19-Local-Authority-Community-Response-Contact-Information.pdf)

**Click on the following link for COVID 19 Community Response For advice for people giving support:**

[https://volunteersouthdublin.ie/wp-content/uploads/2019/07/COVID\\_19-Advice-when-giving-and-receiving-supports.pdf](https://volunteersouthdublin.ie/wp-content/uploads/2019/07/COVID_19-Advice-when-giving-and-receiving-supports.pdf)

To update your service provision please email the Child Family Support Network Coordinators  
North Louth Paula McCabe paula.mccabe1@tusla.ie or  
South Louth AnnMarie Kidd annmarie.kidd@tusla.ie



Comhairle Contae Lú  
Louth County Council

# Louth County Council Roma Helpline



Louth County Council Roma helpline is operational. Information regarding the helpline are in English and Romanian below.

## English

If you are from the Roma community in Ireland and need information on Coronavirus (COVID-19), you can call **087 1264606** from Monday to Friday from 9am - 5pm. You can call for general information on Coronavirus, as well as advice on accessing medical care if you feel unwell. This information can be provided in Romanes and Romanian.

## Romanian

Dacă sunteți Rromi (membri ai comunității Roma) și locuiți în Irlanda și aveți nevoie de informații despre Coronavirus (COVID-19), sunați la **087 1264606**, de luni până vineri, între orele 9 dimineața și 5 după-amiaza. Veți primi primii informații generale despre Coronavirus, precum și sfaturi despre accesarea îngrijirii medicale dacă vă simțiți rău. Aceste informații sunt în limba Română și în limba Rromă.

To update your service provision please email the Child Family Support Network Coordinators  
North Louth Paula McCabe [paula.mccabe1@tusla.ie](mailto:paula.mccabe1@tusla.ie) or  
South Louth AnnMarie Kidd [annmarie.kidd@tusla.ie](mailto:annmarie.kidd@tusla.ie)



North Eastern Regional  
Drug & Alcohol  
Task Force

Cavan ~ Monaghan ~ Louth ~ Meath

## North East Regional Drugs and Alcohol Task Force



The Department of Health & HSE have asked the North East Region Drugs and Alcohol Task Force to flag these key resources to all our partners in both the county Drugs & Alcohol Foras, as well as the Children & Young Peoples' Services Committees, and to reassure everyone that frontline addiction support services continue to work with people around their treatment & recovery. All these services have been re-configured to provide tele-supports rather than face-to-face or group work. Further plans are being developed to ensure we can meet the emerging needs of the people who need our support. Details on all local services are available on:

**The NE-RDATF website:** [www.nedrugtaskforce.ie](http://www.nedrugtaskforce.ie)

**The national service directories:** [www.drugs.ie](http://www.drugs.ie)

**National helpline is:** 1800 459 459

To update your service provision please email the Child Family Support Network Coordinators  
North Louth Paula McCabe [paula.mccabe1@tusla.ie](mailto:paula.mccabe1@tusla.ie) or  
South Louth AnnMarie Kidd [annmarie.kidd@tusla.ie](mailto:annmarie.kidd@tusla.ie)



North Eastern Regional  
Drug & Alcohol  
Task Force

Cavan ~ Monaghan ~ Louth ~ Meath



Child and Family  
Support Network

# North East Regional Drugs and Alcohol Task Force

## DON'T GET LOCKED IN

As we prepare to socially distance ourselves, several countries are reporting an increase in home drinking.

Make your health and home life a priority by following these tips..



### Choose Alcohol Free Days

Plan at least two alcohol free days during your week. The more alcohol free days the better!



### Don't Stockpile

Don't stockpile alcohol in your home – plan your weekly shop. Only buy as much as you have decided you want to drink during the week. Opt for low-alcohol or no-alcohol choices.



### Keep it Late

It can be tempting to drink earlier when you are at home during the day – try to delay any drinking until as late as possible, especially if there are children in your home. Consider a 'time rule' – e.g. No alcohol in our house until after 10pm



### Mind the Children

Children can become afraid when adults are drinking. Avoid drinking alcohol until children have gone to bed. Make sure there is at least one non drinking adult in the house at all times.



### Out of Sight

Keep alcohol out of sight and out of reach of children. When you pour a drink, put the remainder away out of sight or in another room so you are not tempted to reach for more. Drink water to quench thirst before drinking.



### Help is Out There

Making changes can be hard. Contact the HSE support line -1800 459 459 – if you need help or support in reducing your alcohol use.



alcohol forum

+353 74 9125596 / [www.alcoholforum.org](http://www.alcoholforum.org)

To update your service provision please email the Child Family Support Network Coordinators  
North Louth Paula McCabe [paula.mccabe1@tusla.ie](mailto:paula.mccabe1@tusla.ie) or  
South Louth AnnMarie Kidd [anmarie.kidd@tusla.ie](mailto:anmarie.kidd@tusla.ie)

07/04/2020



Feidhmeannacht na Seirbhíse Sláinte  
Health Service Executive

## HSE Multilingual COVID 19 Resources



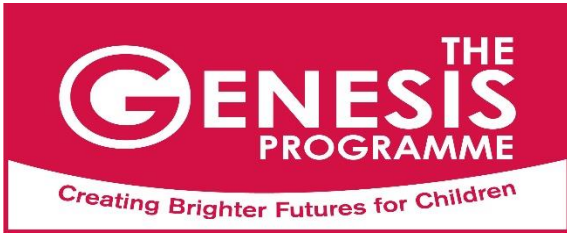
Child and Family  
Support Network

The HSE have developed a range of COVID 19 resources for families. The resources include posters and booklets for families that have been translated into a number of different languages. Please follow the link below.

<https://www.hse.ie/eng/services/news/newsfeatures/covid19-updates/partner-resources/covid-19-translated-resources/>



To update your service provision please email the Child Family Support Network Coordinators  
North Louth Paula McCabe paula.mccabe1@tusla.ie or  
South Louth AnnMarie Kidd anmarie.kidd@tusla.ie



## The Genesis Programme



The Genesis Programme have published a document ‘**Supporting Parents though the days and weeks ahead**’. It is a comprehensive but easily accessible 32 page resource document that is full of useful tips, strategies, ideas and links to support parents and in turn help them to support their children at the time.

If you would like a copy of this document please contact:

Hugh Doogan: [hugh.doogan@cllp.ie](mailto:hugh.doogan@cllp.ie)

Please put **SUPPORTING PARENTS** in the subject line of the email.

Website: [www.genesislouth.ie](http://www.genesislouth.ie)

Phone: 041 9843333



To update your service provision please email the Child Family Support Network Coordinators  
North Louth Paula McCabe [paula.mccabe1@tusla.ie](mailto:paula.mccabe1@tusla.ie) or  
South Louth AnnMarie Kidd [anmarie.kidd@tusla.ie](mailto:anmarie.kidd@tusla.ie)



## One Family Services



**One Family Services** have moved all their services to phone and online support for existing service users so your regular service provider should have been in touch already or will be shortly.

Their National helpline is still operational.

Contact: 01 6629212 or 1890 662 212

They are working to extend the hours available so they can support as many people as possible.

Email: [support@onefamily.ie](mailto:support@onefamily.ie)

One Family Services are still taking new referrals for services either through the helpline or from another professional families are working with.

They will keep updating their website [www.onefamily.ie](http://www.onefamily.ie) and social media accounts with any service changes.

Click on the following link for services still available during COVID 19:

<https://onefamily.ie/services-still-open-helpline-information-services-parenting-supports-and-counselling-services-still-open/>

To update your service provision please email the Child Family Support Network Coordinators  
North Louth Paula McCabe paula.mccabe1@tusla.ie or  
South Louth AnnMarie Kidd annmarie.kidd@tusla.ie



## Connect Family Resource Centre



Connect are providing support by phone and are putting updates / information on their social media platforms and on the Connect Facebook page.

Connect FRC are delivering hampers **within the Connect FRC catchment area** to older/vulnerable people who are unable to leave the house and have limited social supports. With consent Connect FRC are passing some of their details onto the Community Guards for additional supports.

### Contact details:

**Coordinator:** Clíodhna [coordinatorconnectfrc@gmail.com](mailto:coordinatorconnectfrc@gmail.com)

**Community Development and Family Support Worker:** Sinead [outreachconnectfrc@gmail.com](mailto:outreachconnectfrc@gmail.com)

**Community based Family Support Worker:** [communityconnectfrc@gmail.com](mailto:communityconnectfrc@gmail.com)

To update your service provision please email the Child Family Support Network Coordinators  
North Louth Paula McCabe [paula.mccabe1@tusla.ie](mailto:paula.mccabe1@tusla.ie) or  
South Louth AnnMarie Kidd [annmarie.kidd@tusla.ie](mailto:annmarie.kidd@tusla.ie)



# Drogheda River Rescue



Child and Family  
Support Network



## CORONAVIRUS COVID-19

**IF YOU KNOW ANYONE WHO IS  
VULNERABLE OR ANY ELDERLY PEOPLE WHO NEEDS  
ASSISTANCE BE IT GETTING SUPPLIES TO THEM FROM MEDICATION  
OR FOOD OR ANYTHING ELSE.  
PLEASE DO NOT HESITATE TO CALL US ON.**

 **089 2505562**

**WASH HANDS**



**COVER MOUTH**



**AVOID TOUCHING YOUR  
FACE**



**KEEP SURFACES  
CLEAN**



**AVOID SHAKING  
HANDS AND HUGGING**



**KEEP A SAFE  
DISTANCE**



To update your service provision please email the Child Family Support Network Coordinators  
North Louth Paula McCabe paula.mccabe1@tusla.ie or  
South Louth AnnMarie Kidd anmarie.kidd@tusla.ie



Child and Family  
Support Network

## Moneymore Afterschool Club

The Moneymore afterschool club are keeping in contact with children and parents through the Moneymore After-school Club Facebook page or by phone.

They provide updates and information relevant to the age group who attend the service.

### Contact:

**Phone:** 086 3707 069

**Social Media:** Facebook Page



**Community House**  
**43 Moneymore**  
**Drogheda**

To update your service provision please email the Child Family Support Network Coordinators  
North Louth Paula McCabe paula.mccabe1@tusla.ie or  
South Louth AnnMarie Kidd annmarie.kidd@tusla.ie

**CHILD ABUSE DOES NOT STOP IN A PANDEMIC**

**#NeverGiveUpOnAChildEver**

**HOZIER**

**FRIDAY**

**DANNY  
O'REILLY**

**SATURDAY**

**WILD  
YOUTH**

**SUNDAY**

**KODALINE**

**MONDAY**

**DERMOT  
KENNEDY**

**TUESDAY**

**PICTURE  
THIS**

**WEDNESDAY**

**GAVIN  
JAMES**

**THURSDAY**

**AND MORE TO BE ANNOUNCED**

**7pm**

**EVERY NIGHT**

**INSTAGRAM LIVE STREAMS EVERY NIGHT**

DONATE NOW AT [ISPCC.IE/DONATE-NOW](https://ispcc.ie/donate-now) TO DONATE €4 TEXT **CHILDHOOD** TO 50300

ISPCC WILL RECEIVE A MINIMUM OF €3.60. SERVICE PROVIDER: LIKECHARITY



## Teen Parents Support Programme TPSP

The Teen Parent Support Programme have suspended their home support visits until further notice. The Project Workers we providing support over the phone.

### Contact:

**Teen Parent Support Programme Project Worker:** Ciara Finan

**Email:** [lifestart@lifedev.ie](mailto:lifestart@lifedev.ie)

**This Service is relevant for Teen parents who require support.**

To update your service provision please email the Child Family Support Network Coordinators  
North Louth Paula McCabe [paula.mccabe1@tusla.ie](mailto:paula.mccabe1@tusla.ie) or  
South Louth AnnMarie Kidd [annmarie.kidd@tusla.ie](mailto:annmarie.kidd@tusla.ie)



## Lifestart Growing Child Programme



The Lifestart Growing Child Programme are providing support through phone calls. They have also put together resource packs with information. This service is available for families of children birth to five years of age.

**For Parenting Tips follow the link: <https://www.lifestartfoundation.org/>**

**Contact:**

**Lifestart Co-ordinator:** Carol Harkin

**Phone:** 041 9842078

**Email:** [lifestart@lifedev.ie](mailto:lifestart@lifedev.ie)

To update your service provision please email the Child Family Support Network Coordinators  
North Louth Paula McCabe [paula.mccabe1@tusla.ie](mailto:paula.mccabe1@tusla.ie) or  
South Louth AnnMarie Kidd [annmarie.kidd@tusla.ie](mailto:annmarie.kidd@tusla.ie)

## Citizens Information

During the COVID -19 pandemic, Citizens Information Centres are offering an email & phone service. If you would like to request a phone call from an Information Officer please email: [covid19@citinfo.ie](mailto:covid19@citinfo.ie) and include your phone number. An Information officer will then give you a call.

### #COVID19 Pandemic Unemployment Payment

Have you had to take time off work to look after your children?

If your employer cannot pay you during this time, you can apply for a #COVID19 Pandemic Unemployment Payment online at <https://services.mywelfare.ie/en/>

Applying online for the new #COVID19 Pandemic Unemployment Payment? Make sure you put in your details correctly including your date of birth, PPS number, and 22 digit IBAN number.

**Follow the link for more information:** <https://bit.ly/33WpEfw>

## Welcome to Men's Aid Ireland



Men's Aid Ireland formerly known as Amen, is the only dedicated national service supporting men and their families experiencing Domestic Violence in Ireland. Our professional and qualified support team have years of experience in supporting men and families experiencing domestic abuse.

### **Men's Aid Ireland provide:**

- Legal clinic – Information about Safety Orders, Protection Orders, Barring Orders.
- Counselling – By Telephone.
- Counselling – Face to Face.
- Court Accompaniment – Dolphin House, Dublin (Family Courts).
- OutReach Clinics in Monaghan, Cavan, Louth and Meath.
- Certified Training – All areas of domestic abuse including coercive control.

**National Confidential Helpline:** 01 554 3811

**Email:** [hello@mensaid.ie](mailto:hello@mensaid.ie)

**Website:** <https://www.mensaid.ie/>

To update your service provision please email the Child Family Support Network Coordinators  
North Louth Paula McCabe [paula.mccabe1@tusla.ie](mailto:paula.mccabe1@tusla.ie) or  
South Louth AnnMarie Kidd [annmarie.kidd@tusla.ie](mailto:annmarie.kidd@tusla.ie)



## Louth County Childcare Committee



Louth County Childcare Committee are open for business, however the office is closed and staff are working from home. If your service requires support you can contact them in the following ways:

**Email query to:** [info@louthchildcare.ie](mailto:info@louthchildcare.ie) (leave a contact number and they will call you back).

**Emergency calls out of hours:**

**Claire Woods:** 087 1448159

**All general calls to the following numbers:**

**Claire Woods:** Monday – Friday 9am – 5pm

**Sharon Manning:** 087 4169820 Monday – Thursday 9am – 5pm

**Frances Morrow:** 087 3749929 Wednesday – Friday 9am – 4pm

**Miriam Finnegan:** 087 7538575 Monday, Tuesday, Wednesday & Friday 9am – 5pm

Louth County Childcare will continue to send out updates via email and Facebook so stay in touch and take care.

**Website:** <https://www.louthchildcare.ie/>

To update your service provision please email the Child Family Support Network Coordinators  
North Louth Paula McCabe [paula.mccabe1@tusla.ie](mailto:paula.mccabe1@tusla.ie) or  
South Louth AnnMarie Kidd [annmarie.kidd@tusla.ie](mailto:annmarie.kidd@tusla.ie)



# Tusla Educational Support Services (TESS)



Child and Family  
Support Network

Tusla Educational Support Services in Louth have two Educational Welfare Officer's who are working remotely at present. They are maintaining contact with the cases / families on their caseload and are liaising with other professionals who are involved with these families. The EWO's are also ensuring that children have been provided with work from their schools and are actively following up with schools if the children are without work. The Educational Welfare Officer's are continuing to work with children who are out of school at the moment and are linking families with services or information which may support families at this time. They are also passing on information regarding educational programmes which are available online. Work is continuing in supporting parents with school applications and children who have been excluded from school.

## North Louth Educational Welfare Officer

Contact: Shaun Kennedy

Phone: 087 4639638

Email: [shaun.kennedy@tusla.ie](mailto:shaun.kennedy@tusla.ie)

## South Louth Educational Welfare Officer

Contact: Sinead Donnelly

Phone: 086 1746145

Email: [sinead.donnelly@tusla.ie](mailto:sinead.donnelly@tusla.ie)



To update your service provision please email the Child Family Support Network Coordinators  
North Louth Paula McCabe [paula.mccabe1@tusla.ie](mailto:paula.mccabe1@tusla.ie) or  
South Louth AnnMarie Kidd [annmarie.kidd@tusla.ie](mailto:annmarie.kidd@tusla.ie)



## School Completion Programmes



School Completion Programme's are one strand of TUSLA Education Support Service (TESS) along with Educational Welfare Service and Home School Community Liaison.

All SCP's in Louth continue to support our targeted young people and their families during the COVID 19 restrictions. Some sites are assisting with food packs distribution as part of the School Meals Programme.

The following are the contact details for SCP's in Louth;

Niall Weldon  
Dun Dealgan School Completion Programme, Dundalk  
[niall.weldon@scp.ie](mailto:niall.weldon@scp.ie)

Majella O' Hanlon  
Oriel School Completion Programme, Dundalk  
[majella.ohanlon@scp.ie](mailto:majella.ohanlon@scp.ie)

Andrea Duffy  
Deeside School Completion Programme, Mid Louth  
[andrea.duffy@scp.ie](mailto:andrea.duffy@scp.ie)

Christopher Menary  
Holy Family School Completion Programme, Drogheda  
[christopher.menary@scp.ie](mailto:christopher.menary@scp.ie)

Sara Russell  
Drogheda Northside School Completion Programme, Drogheda  
[sara.russell@scp.ie](mailto:sara.russell@scp.ie)

To update your service provision please email the Child Family Support Network Coordinators North Louth Paula McCabe [paula.mccabe1@tusla.ie](mailto:paula.mccabe1@tusla.ie) or South Louth AnnMarie Kidd [annmarie.kidd@tusla.ie](mailto:annmarie.kidd@tusla.ie)



Feidhmeannacht na Seirbhíse Sláinte  
Health Service Executive

## LOUTH CAMHS



CAMHS are continuing their service via telephone consultation with young people and parent/s in addition to sending out information for individual clients based on their needs.

We continue to deal with urgent referrals as they come in to the service

### **Louth Community Mental Health Team**

Tel: [041 9893300](tel:0419893300)

Louth CAMHS, Child and Family Centre  
Dublin Road  
Drogheda  
Co. Louth

To update your service provision please email the Child Family Support Network Coordinators North Louth Paula McCabe [paula.mccabe1@tusla.ie](mailto:paula.mccabe1@tusla.ie) or South Louth AnnMarie Kidd [annmarie.kidd@tusla.ie](mailto:annmarie.kidd@tusla.ie)



An Roinn Gnóthaí Fostaíochta  
agus Coimirce Sóisialaí  
Department of Employment Affairs  
and Social Protection

## Department of Employment Affairs and Social Protection



The function of the Department of Social Protection is to provide support to people looking for income supports.

To apply for the COVID 19 payment please visit: [www.mywelfare.ie](http://www.mywelfare.ie)

### Contact details for area managers:

#### **Intreo Centre Dundalk:**

Sharon Curran [sharon.curran@welfare.ie](mailto:sharon.curran@welfare.ie)

#### **Intreo Centre Drogheda:**

Karen Usher [karen.usher@welfare.ie](mailto:karen.usher@welfare.ie)

#### **Employer Relations NE Division:**

Ann Keeley [anne.keeley@welfare.ie](mailto:anne.keeley@welfare.ie)

To update your service provision please email the Child Family Support Network Coordinators  
North Louth Paula McCabe [paula.mccabe1@tusla.ie](mailto:paula.mccabe1@tusla.ie) or  
South Louth AnnMarie Kidd [annmarie.kidd@tusla.ie](mailto:annmarie.kidd@tusla.ie)



## Louth Local Sports Partnership



Louth Local Sports Partnership, is in place to provide support to sport and active recreation at local level in the Louth area. The key aims of the local sports partnerships are to increase participation in sport and physical recreation and ensure that local resources are used to best effect.

In Louth we are blessed with a wide and diverse range of national recreational spaces, sporting infrastructure and physical activity opportunities, that are at the disposal of potential participants across all sections of our society.

Louth LSP support sustainable participation in sport and physical activity in County Louth for everyone. We do this by working with individuals, communities and agencies to identify the participation sports needs of the county and we then work with others to realise the programmes and events which respond to these needs.

For further details please visit the **Facebook page: louth local sports partnership**

To update your service provision please email the Child Family Support Network Coordinators  
North Louth Paula McCabe paula.mccabe1@tusla.ie or  
South Louth AnnMarie Kidd annmarie.kidd@tusla.ie