



# DUBLIN CITY SOUTH

Infant Health & Wellbeing

*Working group discussion*



*28<sup>th</sup> September 2022*



CHILDREN & YOUNG PEOPLE'S SERVICES COMMITTEES  
COISTÍ NA SEIRBHÍDÍ DO LEANAÍ & DO DHAOINE ÓGA

Dublin City South  
Cathair Bhaile Átha Cliath Theas

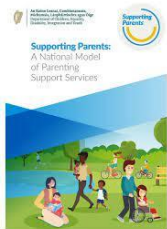
# Ice Breaker

- Energy Levels 1- 10.
- If you could be the fly on the wall in any celebrity household who would it be and why?



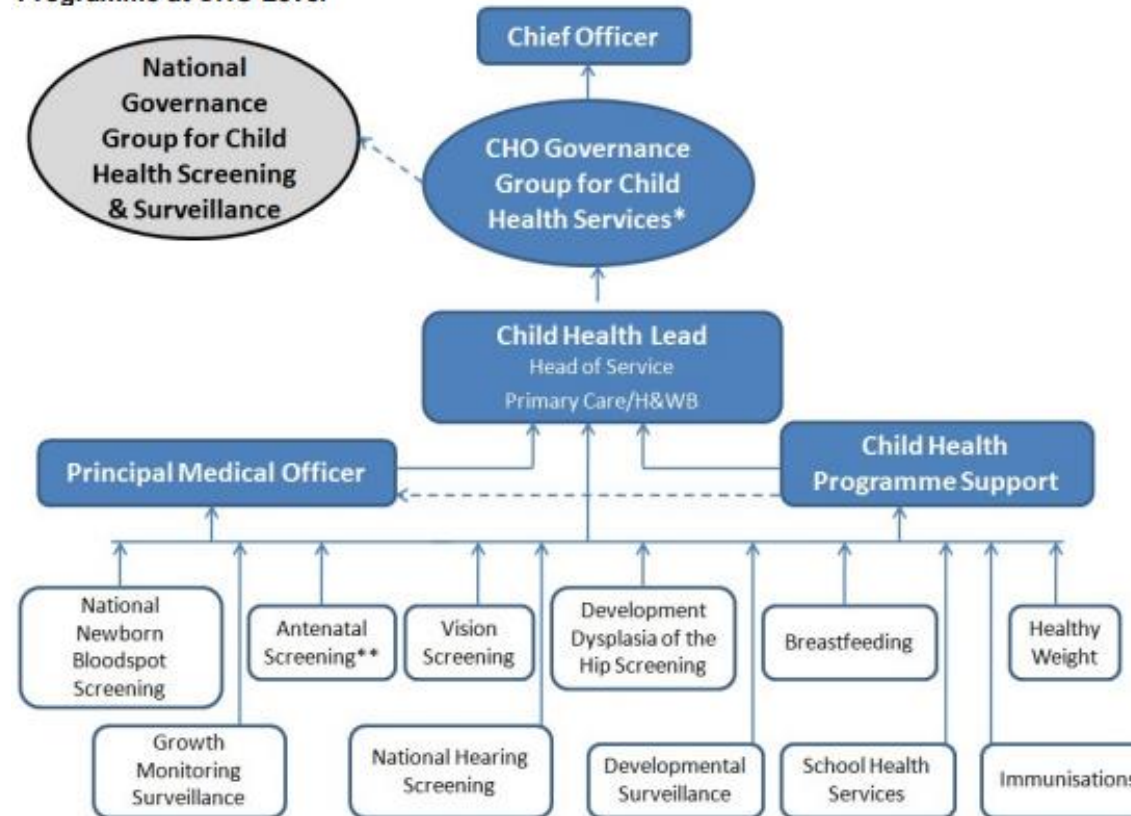
# Relevant National Strategies

- National Healthy Childhood Programme Framework.
- Healthy Ireland, A Framework for Improved Health and Wellbeing 2013-2025.
- Better Outcomes, Brighter Futures: The National Policy Framework for Children and Young People ( 2<sup>nd</sup> Edition in development).
- *First 5* is a whole-of-Government strategy to improve the lives of babies, young children.
- Supporting Parents: A National Model of Parenting Support Services.



# National Healthy Childhood Programme

Figure 5: Proposed Clinical Governance Structure for the National Healthy Childhood Programme at CHO Level



# CYPSC- Dublin South City



CYPSC are county-level committees that bring together the main statutory, community and voluntary providers of services to children and young people. They provide a forum for joint planning and co-ordination of activity to ensure that children, young people and their families receive improved and accessible services.

# Infant Health & Wellbeing

*Dublin City South Working group*

- *Healthy growth and development of preschool age children*
- *Support for parents / caregivers*
- *Build capacity in Dublin South City, with partner organisations through interagency learning and improve outcomes for young children and families*

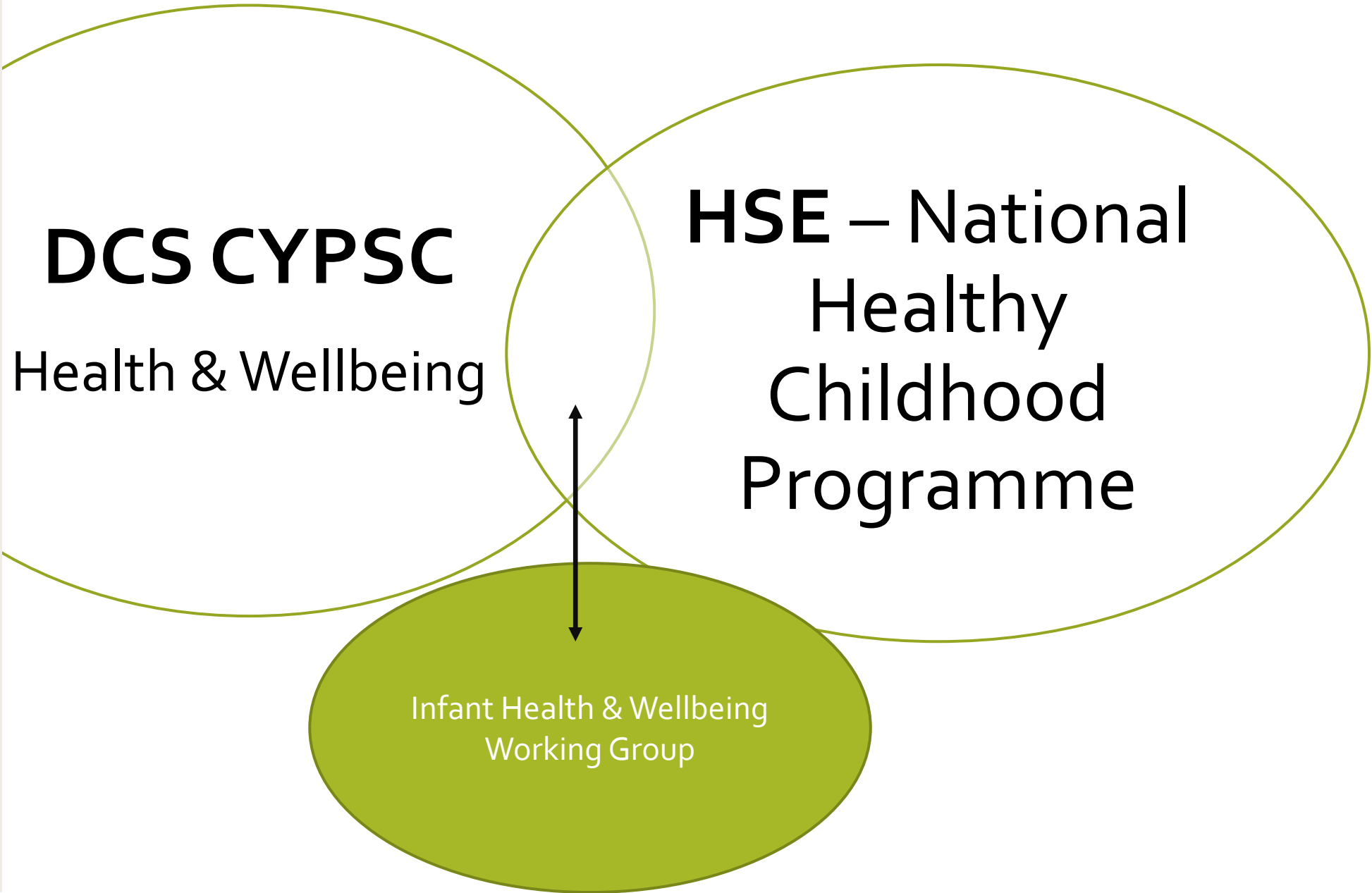
ACTIVE &  
HEALTHY

ACHIEVING  
IN ALL AREAS OF  
LEARNING &  
DEVELOPMENT

SAFE &  
PROTECTED  
FROM HARM

ECONOMIC  
SECURITY &  
OPPORTUNITY

CONNECTED,  
RESPECTED &  
CONTRIBUTING



**DCS CYPSC**

Health & Wellbeing

**HSE – National  
Healthy  
Childhood  
Programme**

Infant Health & Wellbeing  
Working Group

# Dublin City South CYPSC / HSE Infant Health & Wellbeing working group.

## Role and Remit

- *Working group to focus on Infant Health and Wellbeing supports as part of the prevention and early intervention agenda*
- *Recognise work programmes already undertaken in this area / Infant Health and Wellbeing (avoid duplication)*
- Link with other local themes including trauma informed, play and parenting and consider potential priorities for Healthy Ireland Funding via CYPSC.



What existing /relevant programmes and projects are being delivered in the Dublin South City area ?

Mentimeter code

What is impacting on delivery of relevant programmes and projects in the Dublin South City area?

Mentimeter code

# What next?

**Do you want to be a member the working group going forward? (or nominate a staff member) to;**

1. Develop work plan/ set priority
2. Agree work outputs / outcome measures
3. Meet 4 / 6 times per year
4. Report to Health & Wellbeing /HSE , DCS CYPSC reps

Thank you

