

TUSLA in conjunction with the DCYA

Outcomes for Children

Information & Data Hub Project

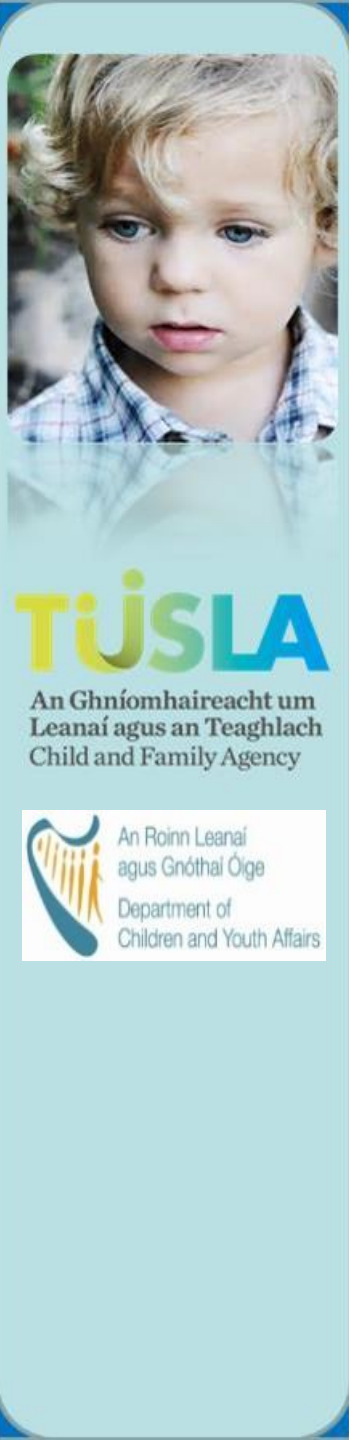
Sheila Moore, Peggy Ryan

TUSLA West Regional Information Management
Lead Information Managers Outcomes For Children
Information Hub Project, TUSLA

June 01 2017

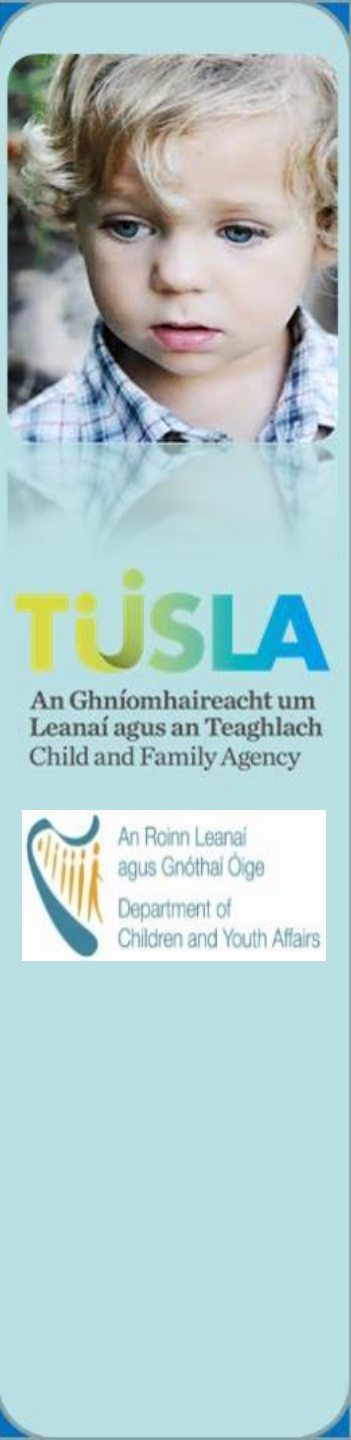
Contents of Presentation

- CAWT History & Products
- TUSLA, National Child & Family Agency
- Government & DCYA
- Better Outcomes, Brighter Futures
- TUSLA's Vision, Corporate Plan
- TUSLA Outcomes for Children National Data & Information Hub Project
Scope, Aims / Objectives
- Outcomes Based Planning
- Project Status & Next Steps
- Visuals – NI & ROI
- CYPSCs



CAWT, History

- Former HSE (Children's Services), in partnership with colleagues in Northern Ireland, piloted a data project titled Outcomes for Children.
- The project was funded through INTERREG III. It established a geo-mapping website which captured key data related to children from a variety of sources and a Planning ToolKit.
- The website was designed to provide and map information for policy makers, service providers and local communities, to assist children's services planning.




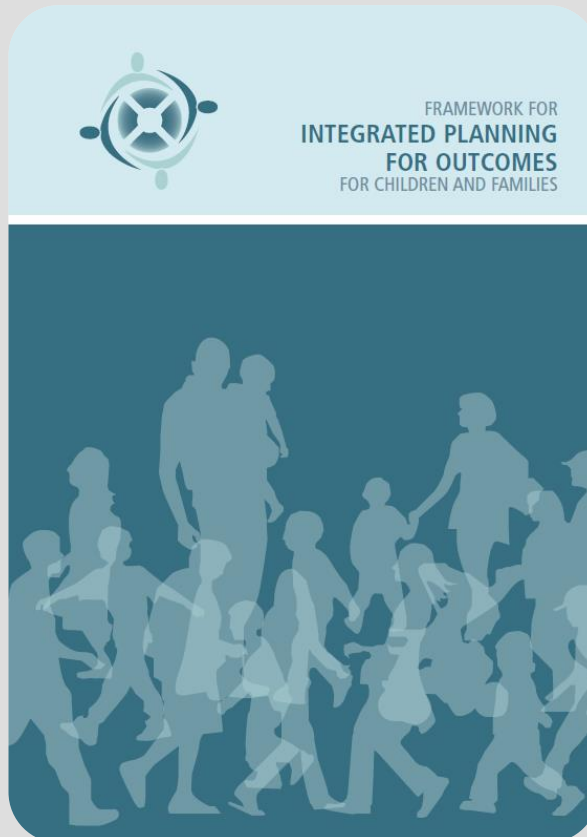
Products of the CAWT Project

- Interactive mapping website
- Outcomes based planning tool



TÚSLA
An Ghníomhaireacht um
Leanaí agus an Teaghlach
Child and Family Agency


An Roinn Leanaí
agus Gnóthai Óige
Department of
Children and Youth Affairs



Outcomes for Children Project

Outcomes for Children
website is designed to provide and map information for policy makers, service providers and local communities on planning and delivering services so that better outcomes are achieved for children and young people.

The initiative has been supported by the European Union's INTERREG III and INTERREG IVA funding programs, secured by Co-operation and Working Together (CAWT), the cross border health services partnership.

Interactive Maps

Latest News and Events

Family Support Database

Statistical Indicators

Our Framework

Locality Planning Groups

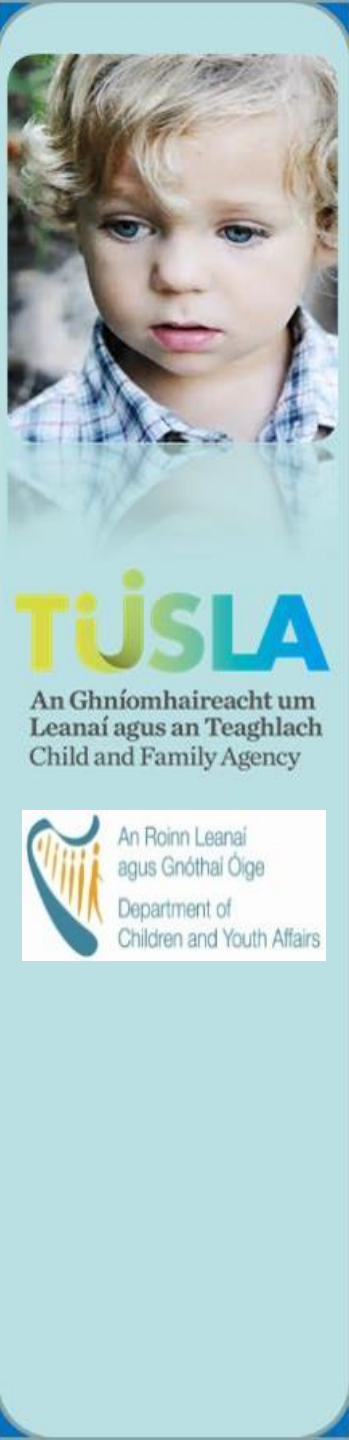
Contact
CAWT
Outcomes for Children Project
Tower Hill
Armagh
BT61 9ED

T: +44 (028) 3741 44 35
Click here to email us:
[Our Location Map](#)

CAWT **European Union** **DHSSPS** **An Roinn Sláinte** **HSC** **Health and Social Care**

TUSLA

Established in 2014 as the dedicated State Agency with responsibility for improving the well being and outcomes for children in Ireland, operating under the Child & Family Act 2013 and within the policy framework developed by the DCYA.

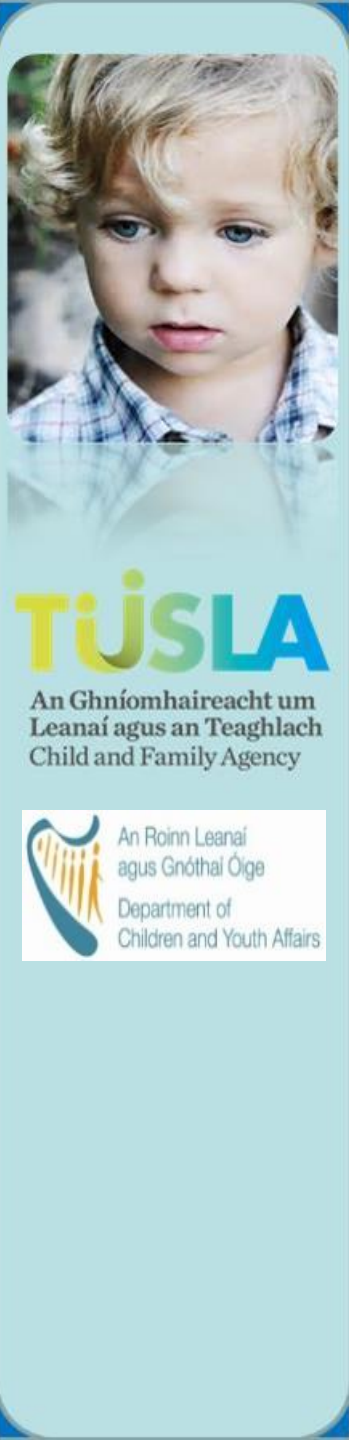


Government & DCYA

Better Outcomes, Brighter Futures: The National Policy Framework for Children and Young People, 2014-2020, published in March 2014, sets out the Government's agenda and priorities in relation to children and young people over the next seven years.

It integrates a whole-of-Government focus and emphasises the importance of shared responsibilities in achieving improved outcomes for children and young people.

It is rooted in Ireland's commitments under the United Nations Convention on the Rights of the Child.



Better Outcomes, Brighter Futures



TÚSLA

An Ghníomhaireacht um
Leanaí agus an Teaghlach
Child and Family Agency



An Roinn Leanaí
agus Gnóthaí Óige
Department of
Children and Youth Affairs

BETTER OUTCOMES BRIGHTER FUTURES

The national policy framework
for children & young people
2014 - 2020

Active &
Healthy

Achieving

Safe

Economic
Security

Connected
& Respected

Five national outcomes for children and young people

This Policy Framework has adopted an outcomes approach based on five national outcomes for children and young people. These outcomes are interconnected and reinforcing. Four aims have been identified for each outcome (see diagram below)

VISION

Our vision is to make Ireland the best small country in the world in which to grow up and raise a family, and where the rights of all children and young people are respected, protected and fulfilled; where their voices are heard and where they are supported to realise their maximum potential now and in the future.

NATIONAL OUTCOMES

Active & healthy,
physical & mental
wellbeing

Achieving
full potential
in all areas of
learning &
development

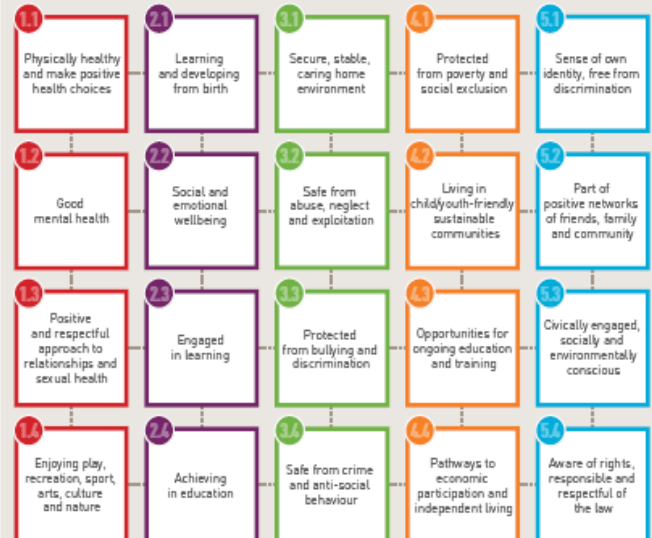
Safe & protected
from harm

Economic security
& opportunity

Connected,
respected &
contributing to
their world

AIMS:

Children and young people are or have ...



Children and Young People have a voice and influence in all decisions affecting them

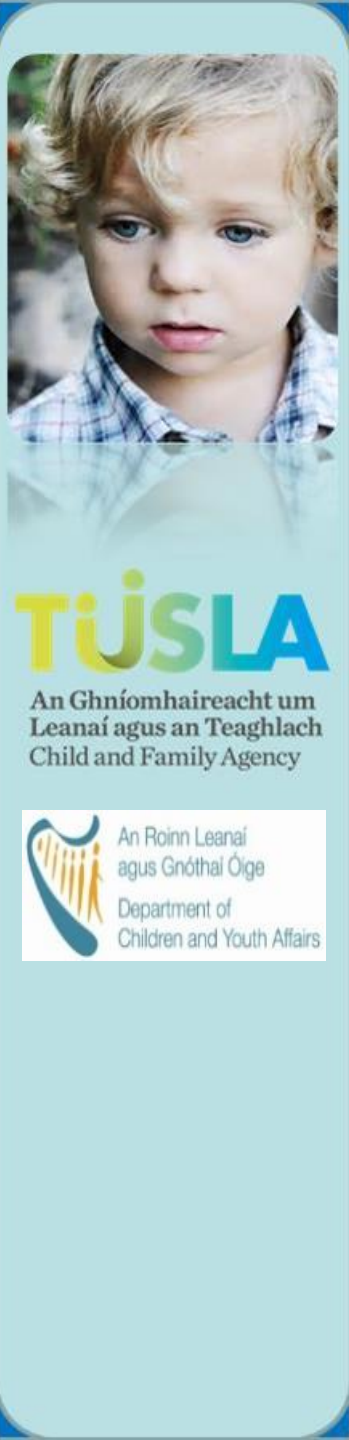
TUSLA's Vision

Vision

All children are safe and achieving their full potential

Mission

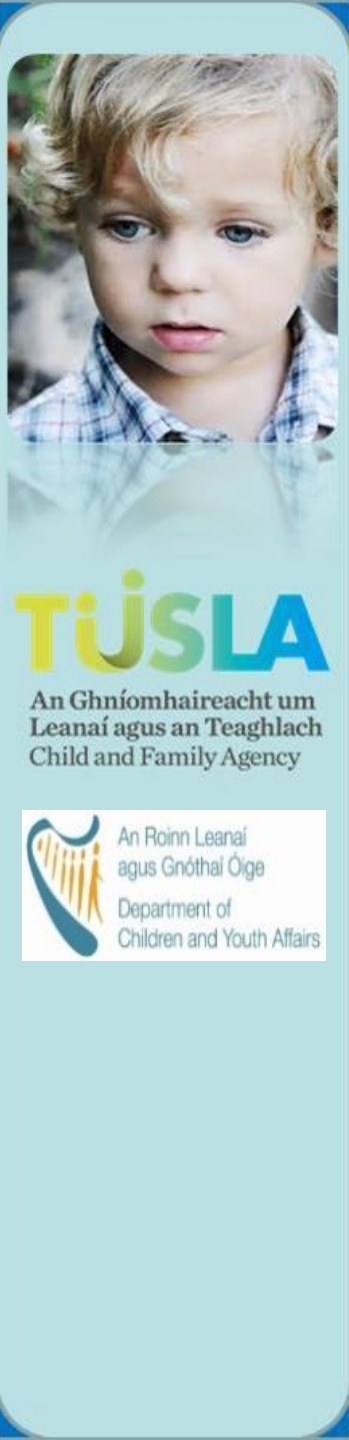
With the child at the centre our mission is to design and deliver supportive, coordinated and **evidence-informed** services that strive to ensure **positive outcomes for children**



TUSLA, Corporate Plan

The Corporate Plan clearly sets out the pathway to achieving the desired long term outputs

Short-term Outputs (1-3 years)	Medium-term Outputs (4-6 years)	Long-term Outputs (7-10 years)
A. Tusla's child protection processes and systems are responding to children at risk in a timely manner.	A. Revised systems are significantly reducing the numbers of children at risk.	A. All children are safe from abuse, neglect and exploitation.
B. All processes and systems underpinning children and family policy and services are evidence-informed.	B. Children and family services are more user-friendly, strengths-based and co-produced.	B. All children and families are capable of making informed decisions about their health and lifestyles.
C. A targeted range of family and parenting supports.	C. Children and family services are properly coordinated and aligned.	C. All parents are providing stable and loving home environments in which children thrive.
D. Attendance, participation and retention in full-time education is embedded in service delivery for all children.	D. The benefits of increased child and family participation in education is acknowledged across all sectors of society.	D. All children and their families are actively engaged in their education.
E. A fit-for-purpose organisation to deliver on our strategic intent.	E. The Agency is a responsive partner, collaborator and leader in cross-sectoral and interagency activities.	E. The full support of society and the community to support children in their transition to adult life.

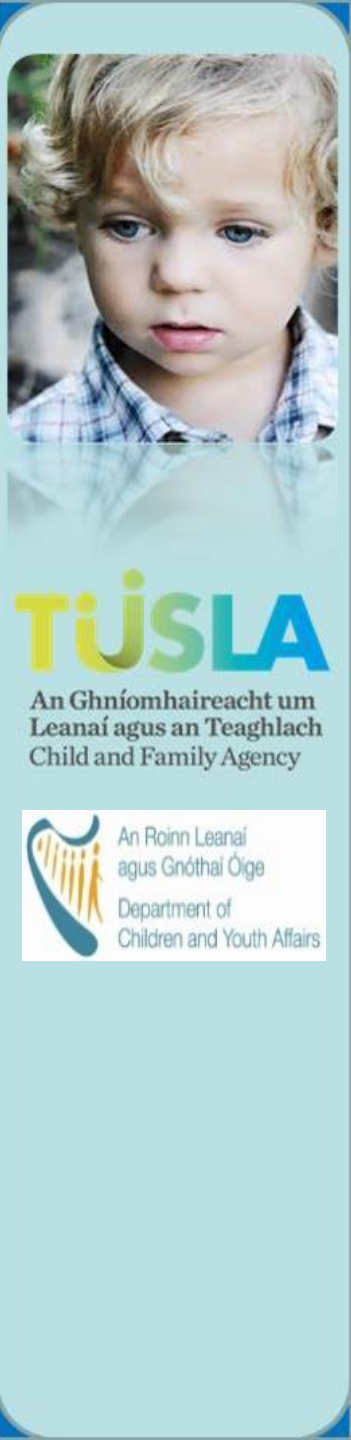


TUSLA

Outcomes for Children National Data & Information Hub Project

With the government policy framework (BOBF) and TUSLA's strategic and corporate plan an Agency decision was made in Q4 2015 to:

- Consult with the DCYA to establish in principle and build upon the legacy and benefits from the CAWT project.
- Host an open workshop to demonstrate the Northern Ireland model and discuss the potential use of a similar model within TUSLA.



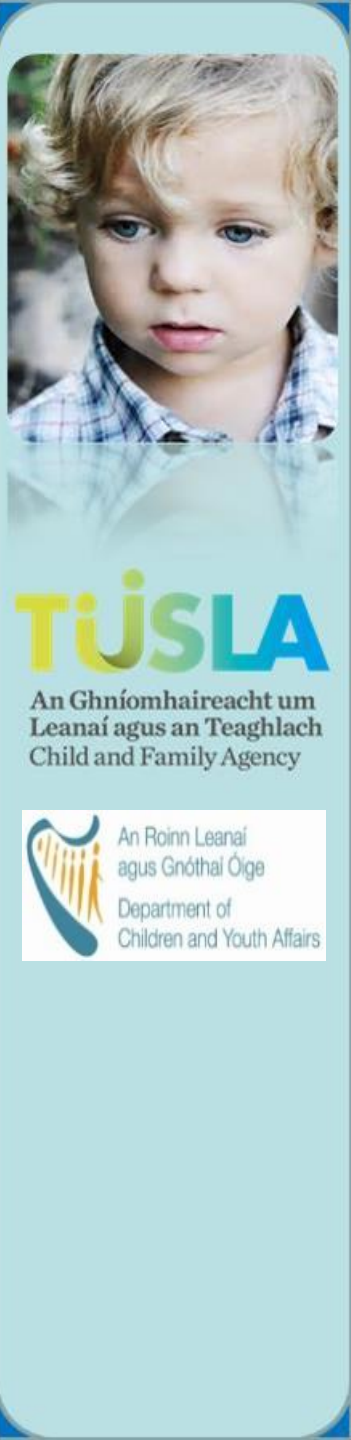
Outcomes for Children National Data & Information Hub

Project Scope

In Q1, 2016 TUSLA and the DCYA agreed to the establishment of a new project 'Outcomes for Children National Data & Information Hub'.

The funding was agreed and ring fenced (AP PPFS grant and DCYA) for a pilot to include 11 CYPSCs in Year 1.

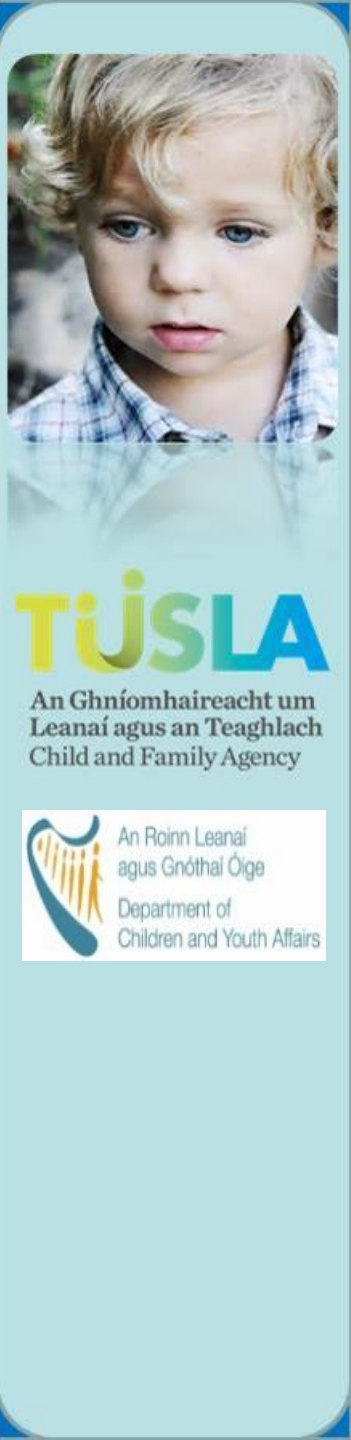
The project offers a sustainable opportunity to provide a national standardised technical solution for mapping outcomes, indicators and services for children and young people.



Outcomes for Children National Data & Information Hub Project Aims / Objectives

The project scope was developed with a number of aims and objectives that include:

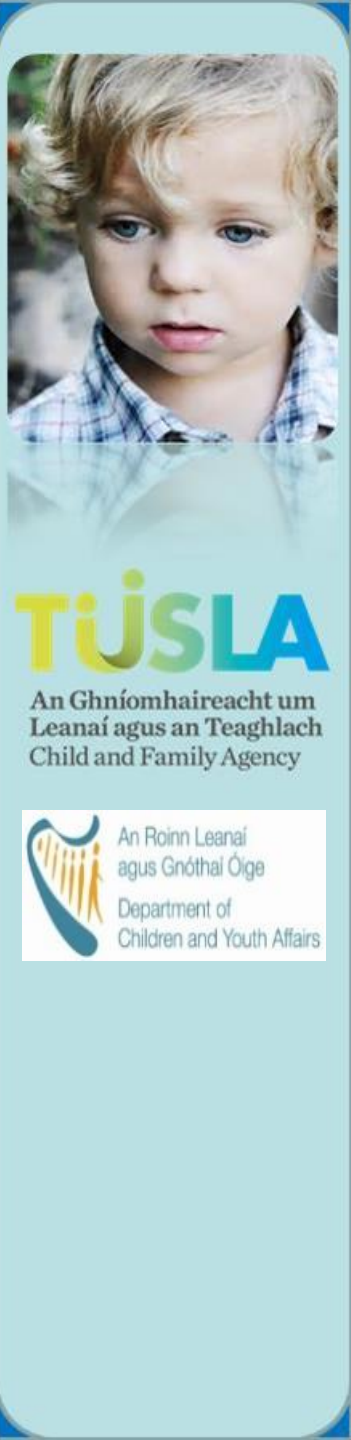
- Incrementally build a centralised data hub that will host a wide range of published data from various agencies.
- Agree a set of indicators referencing the recently developed national set of indicators (DCYA), framed against the five national Outcomes BOBF.
- Use the validated and quality assured datasets from the agencies to populate the agreed indicator set.
- Overlay the indicators with additional information as required for planning purposes e.g. child population overlayed with child health indicators and / or child health service location details.



Outcomes for Children National Data & Information Hub Project Aims / Objectives

Continued

- Develop robust data trend analysis and information dissemination capacity at area, regional and national levels to effectively underpin integrated multi-agency children's services planning.
- Produce area specific Report Cards and / or Dashboards.
- Ensure the system supports the operational planning of TUSLA at area, regional and national levels.
- Train and support both TUSLA personnel and relevant CYPSC partners at national and local level in the use and application of the system to underpin and optimise children's services planning.
- Inform the enhancement of both quantitative and qualitative data collection to support TUSLA and DCYA research agendas and meet corporate objectives regarding capacity as a learning organisation.



Outcomes Based Planning

It has been agreed that the principles and methodology of Outcomes Based Planning (Results Based Accountability- RBA) will underpin the format of the data within the hub.

As part of the project implementation a workshop in Q4 2017 will be delivered by Mark Friedman, international expert on RBA.

How much did we do?

Measure



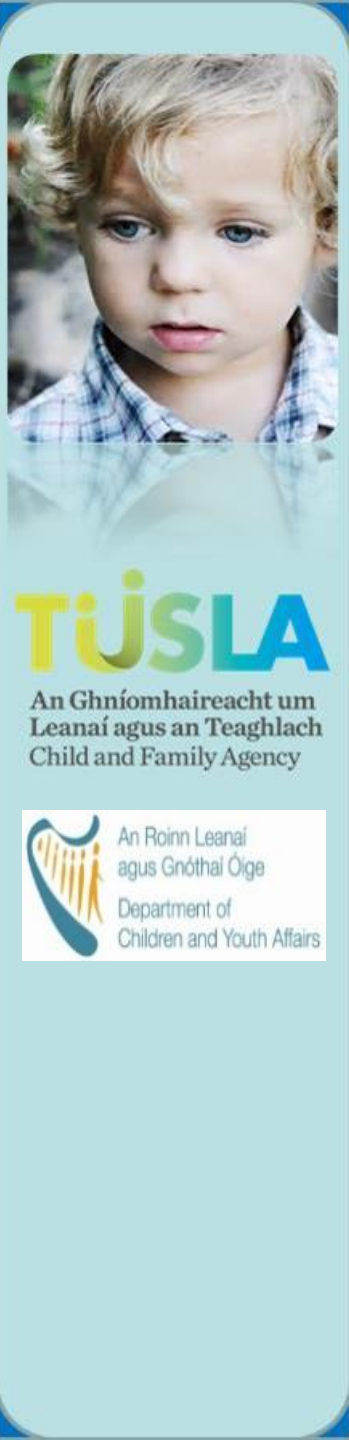
How well did we do?

Trend



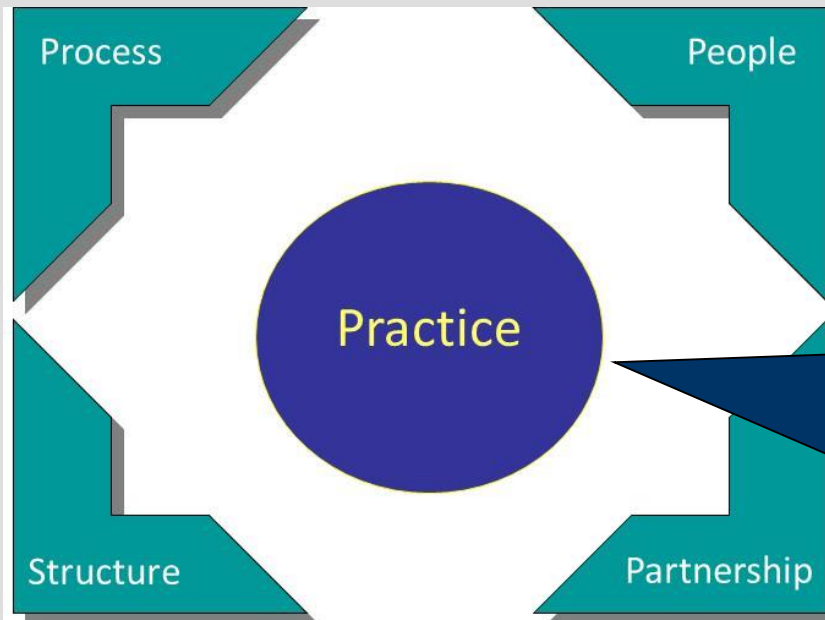
Is anyone better off?

Analyse

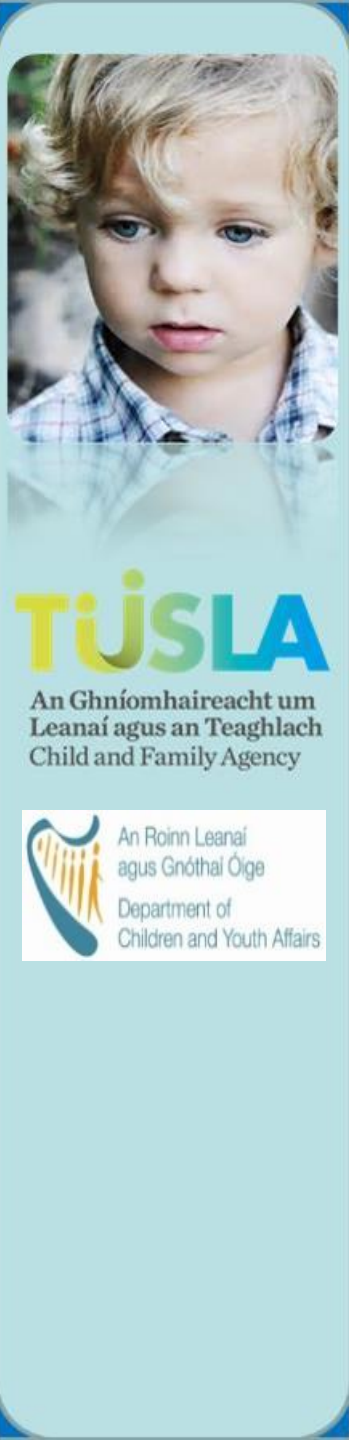


Outcomes Based Planning

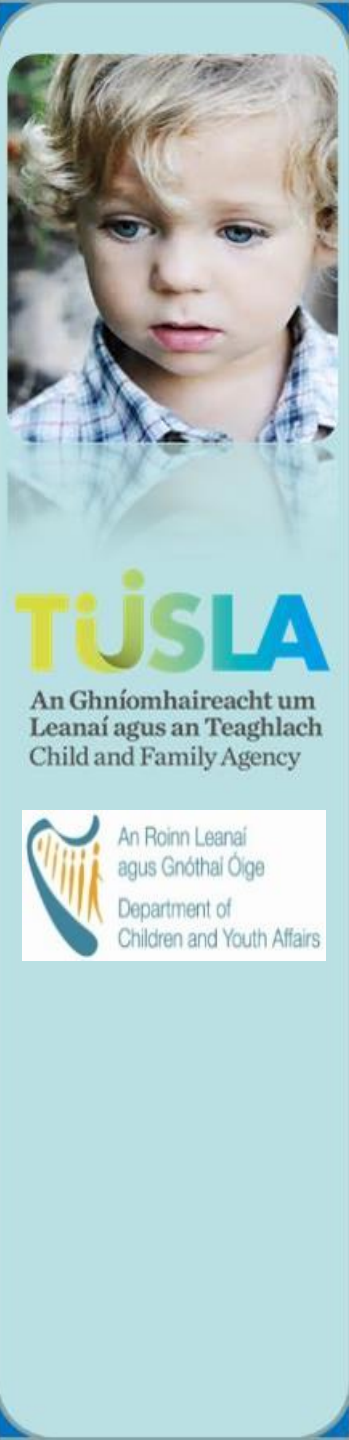
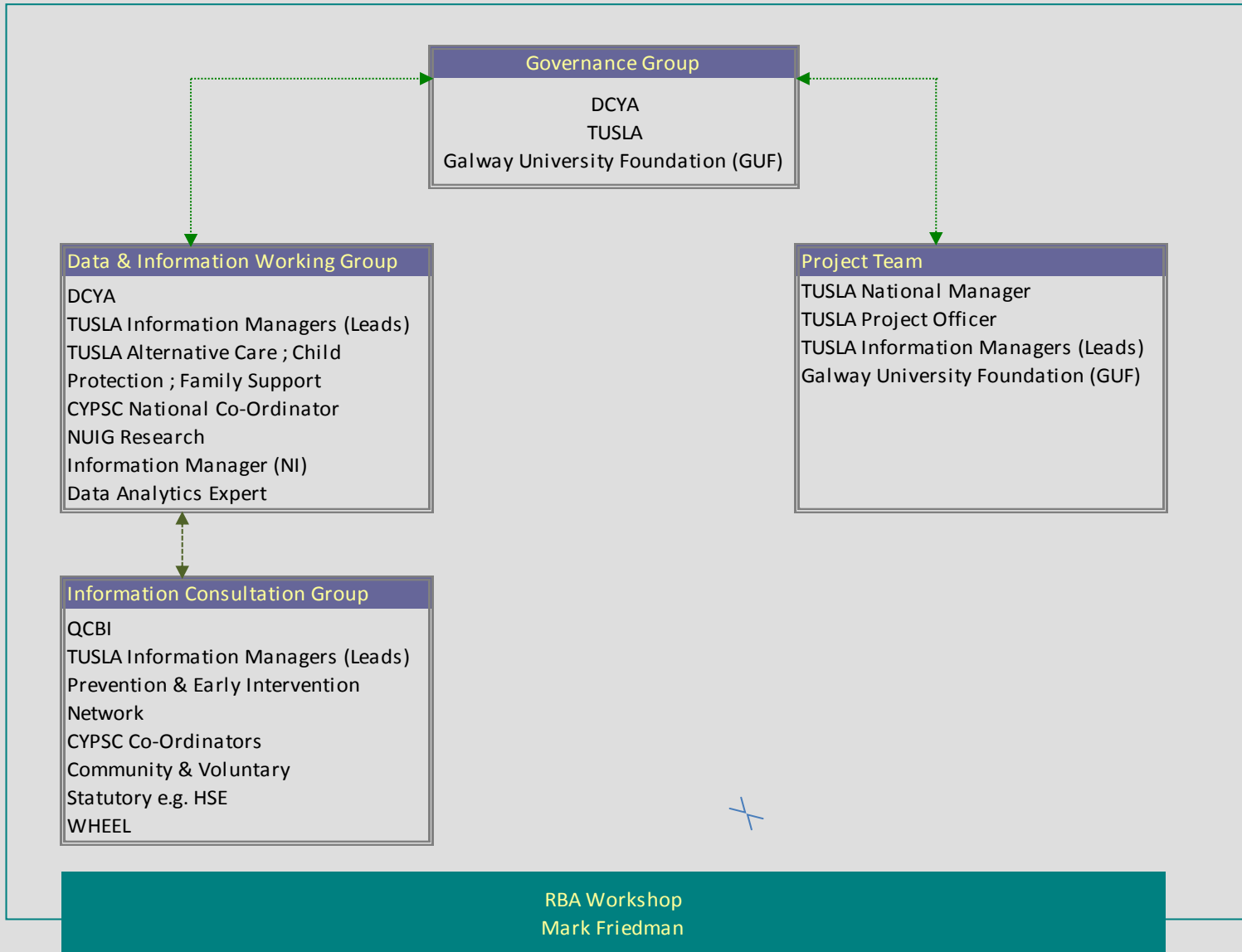
Is an approach to planning services and assessing their performance that focuses attention on the results i.e. outcomes that services are intended to achieve



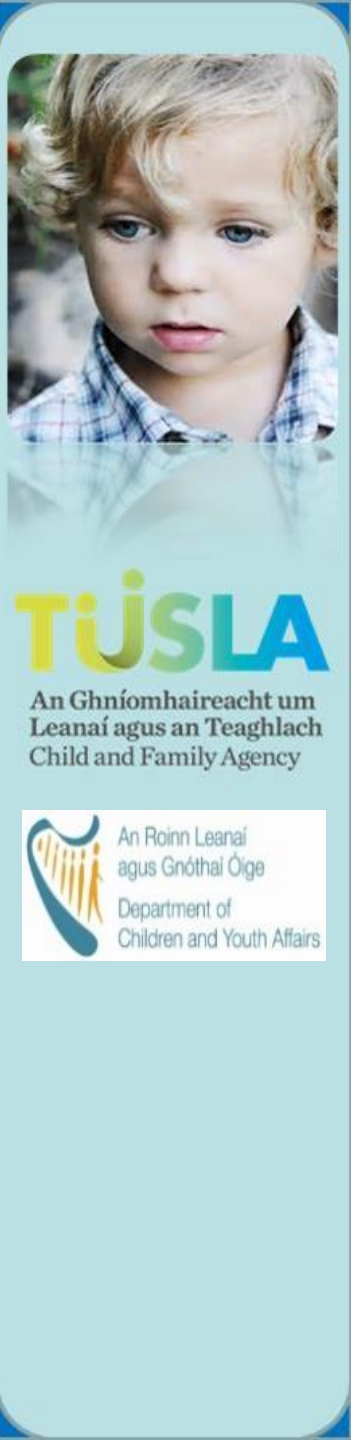
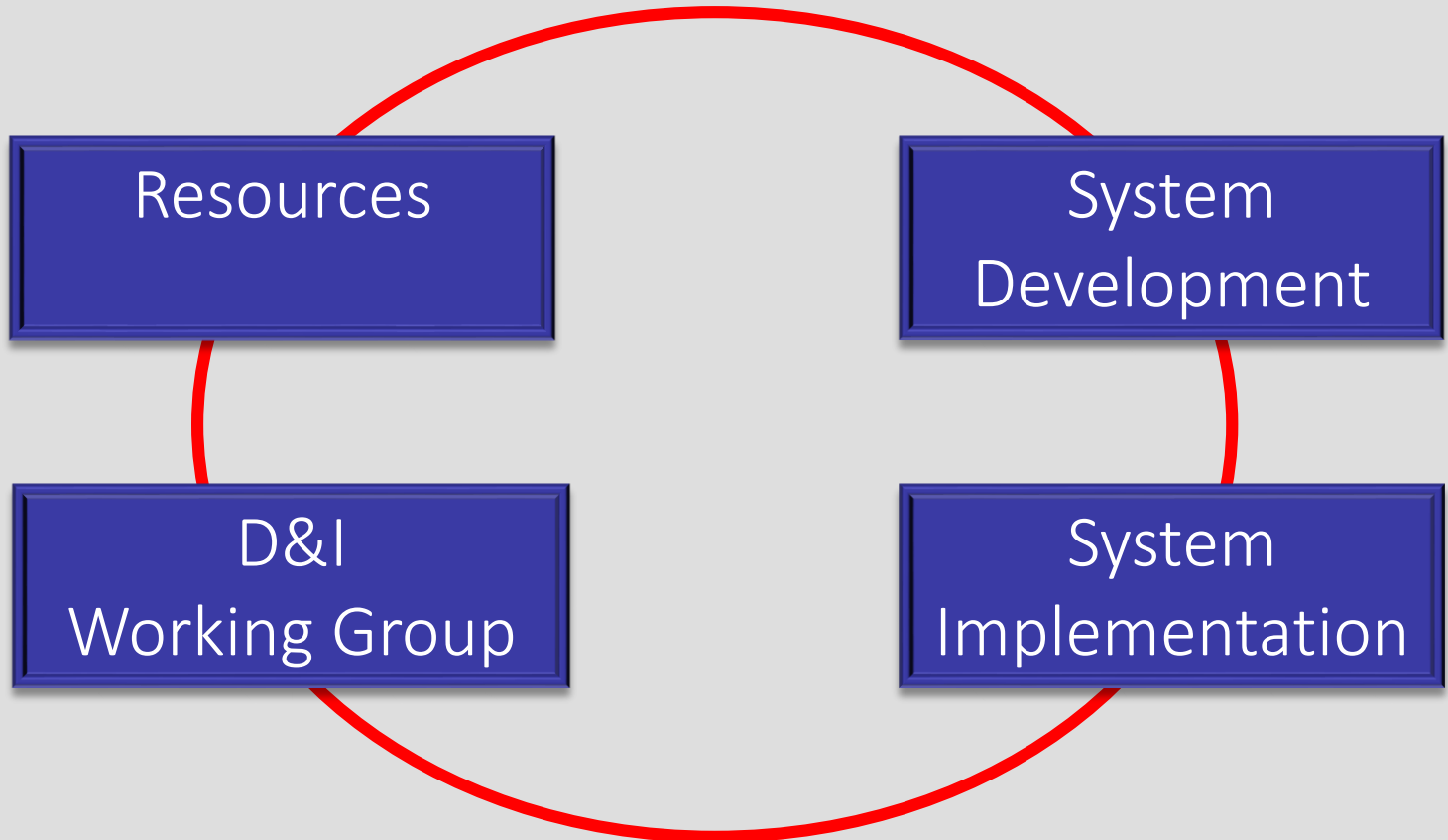
By establishing the correct structure, adapting our processes and including the relevant people and partners we can secure a strategic and cultural change to enhance practice thereby making a difference to the lives for whom we provide services for.



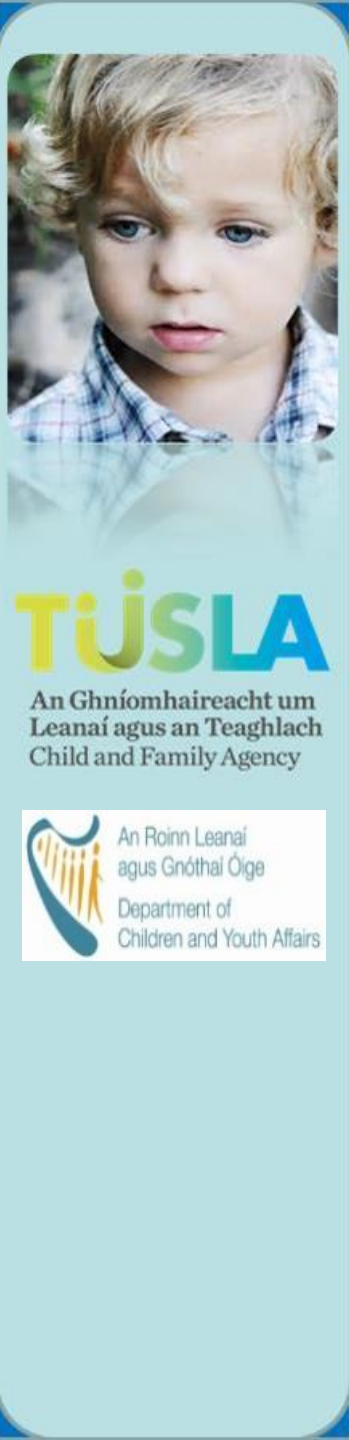
Project Structure Overview



Project Status & Next Steps



Visuals



The following provides an illustration of the Northern Ireland system which can be viewed live at www.outcomesforchildren.org or www.cypsp.org

Certain technical requirements pertain to the operation of the above site/s e.g. should be viewed in Google Chrome for optimum interaction.

CYPSP, Northern Ireland

① www.cypsp.org/maps-demographic/



[Home](#) | [About Us](#) | [News & Events](#) | [Publications](#) | [Links](#) | [Contact](#)



[CYPSP](#) | [Outcome Based Planning](#) | [Outcomes Groups](#) | [Regional Sub-Groups](#) | [Locality Planning Groups](#) | [Family Support Hubs](#) | [Young People's Webpages](#)

You are here: Demographic

Demographics

Healthy

Safety

Learning

Economic

Play

TÚSLA

An Ghníomhaireacht um
Leanaí agus an Teaghlach
Child and Family Agency



An Roinn Leanaí
agus Gnóthai Óige
Department of
Children and Youth Affairs

CYPSP, Northern Ireland



TÚSLA

An Ghníomhaireacht um
Leanaí agus an Teaghlach
Child and Family Agency

An Roinn Leanaí
agus Gnóthaí Óige
Department of
Children and Youth Affairs

Demographics

Data Filter

Help Print Share

Legend

☒ Northern Ireland Wards

☐ 3 - 25

☐ 26 - 33

☐ 34 - 42

☐ 43 - 54

☐ 55 - 185

☐ Local Government District

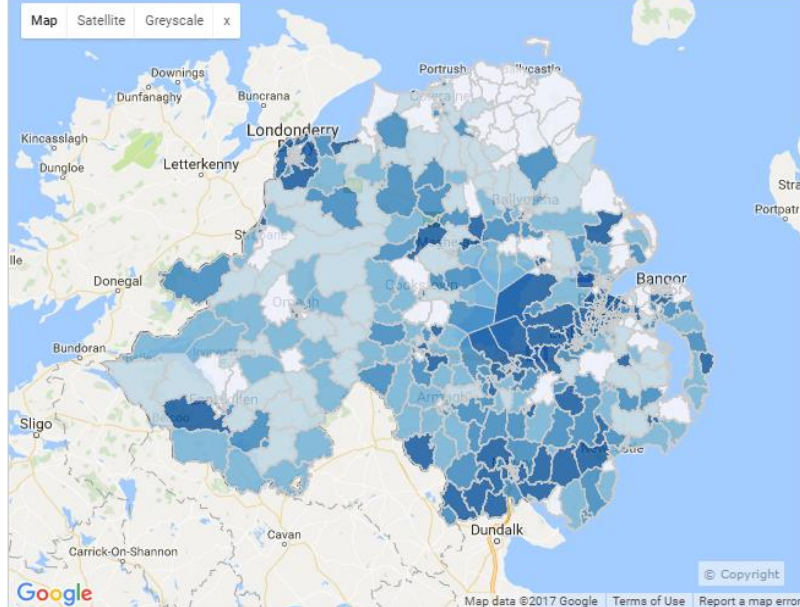
☐ Outcomes Group/ HSCT

☐ Locality Planning Group

☐ Sure Starts

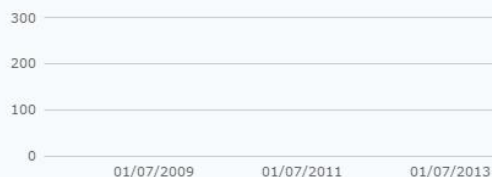
☐ Local Government District 2015

Demographics >> Births by Academic Year (Data Source: NINIS) (01/07/2014)

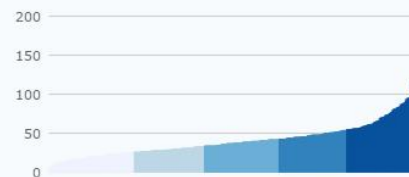


01/07/2008 01/07/2009 01/07/2010 01/07/2011 01/07/2012 01/07/2013 01/07/2014

Time Series Chart



Bar Chart



Data Table

Name	Births by Academic Year (Data Source: NINIS) (01/07/2014)
Abbey	29
Abbey Park	24
Academy	14
Aghagallon	58
Aghanloo	44
Agivey	26
Ahoghill	50
Aldergrove	66
Altmore	54
Altnagelvin	89
Andersonstown	50
Annagh	57
Annalong	41
Antiville	28

Clear Filter

Comparison/Totals Table

Name	Births by Academic Year (Data Source: NINIS) (01/07/2014)
Belfast OPG	4,685
NI	24,189
Northern OPG	5,841
South East OPG	4,283

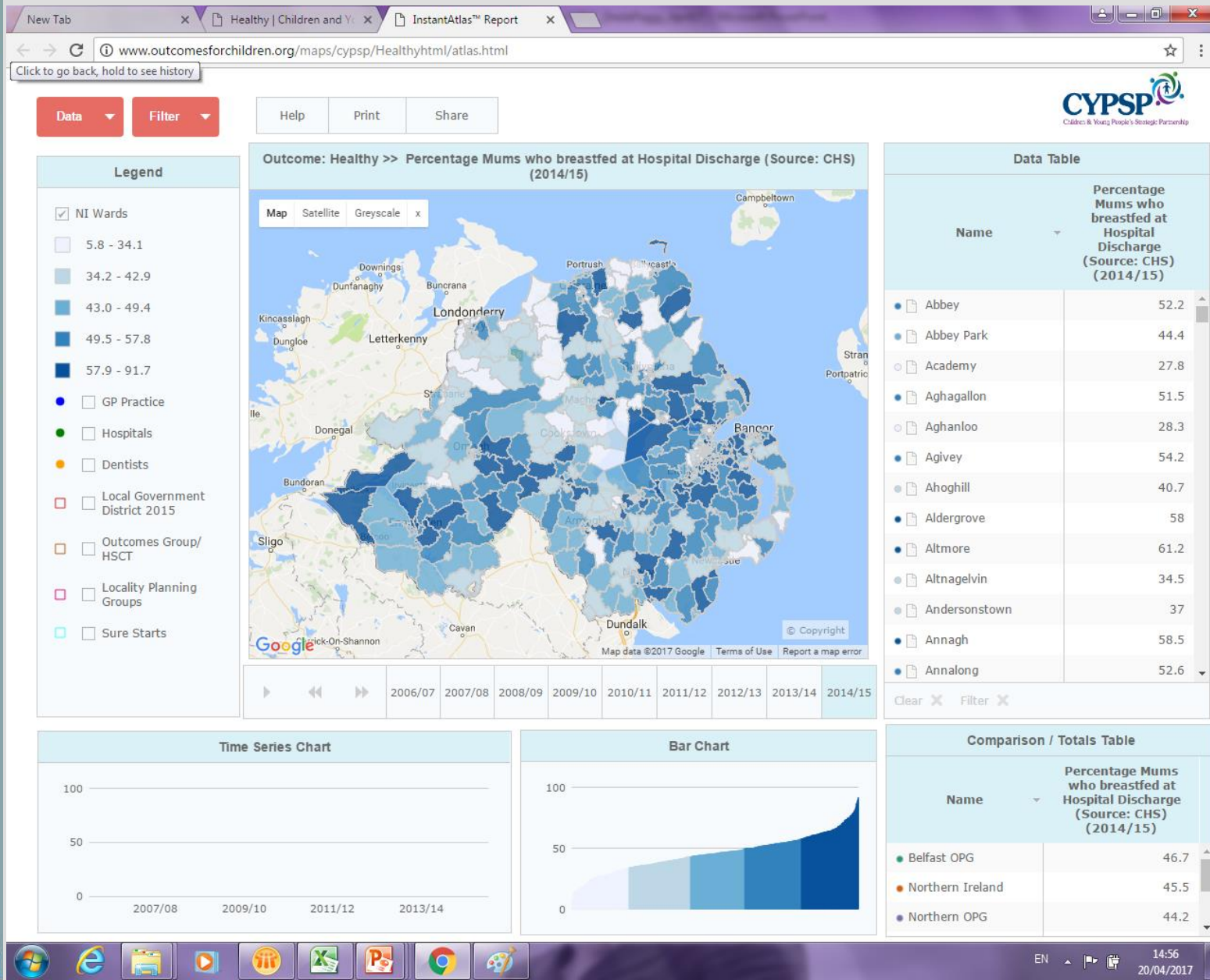
CYPSP, Northern Ireland



TÚSLA
An Ghníomhaireacht um
Leanaí agus an Teaghlach
Child and Family Agency

An Roinn Leanaí
agus Gnóthaí Óige
Department of
Children and Youth Affairs

Healthy



CYPSP, Northern Ireland



TÚSLA
An Ghníomhaireacht um
Leanaí agus an Teaghlach
Child and Family Agency

An Roinn Leanaí
agus Gnóthaí Óige
Department of
Children and Youth Affairs

Healthy

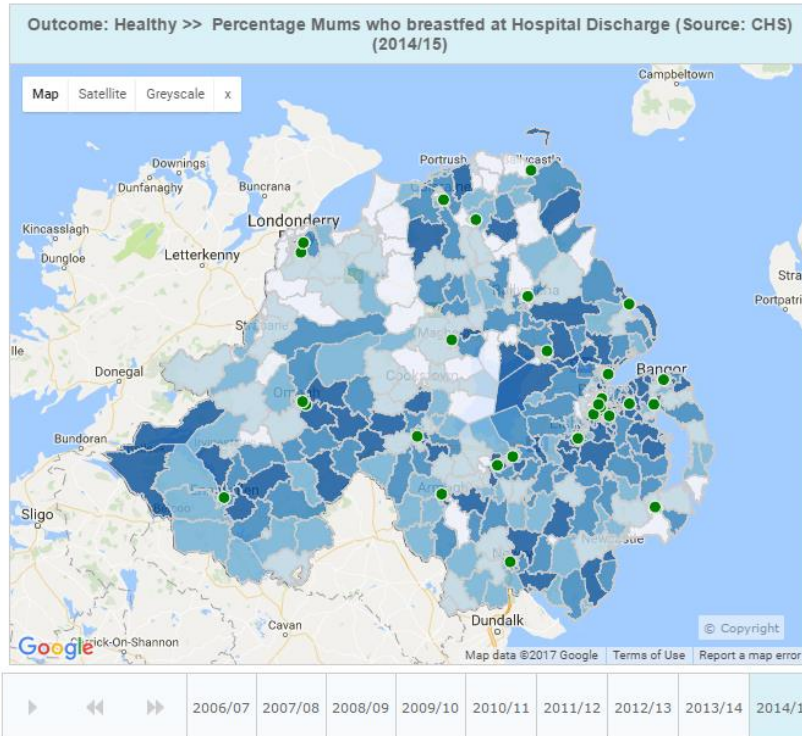
New Tab x Healthy | Children and Y x InstantAtlas™ Report x
www.outcomesforchildren.org/maps/cypsp/Healthyhtml/atlas.html

Data Filter

Help Print Share

Legend

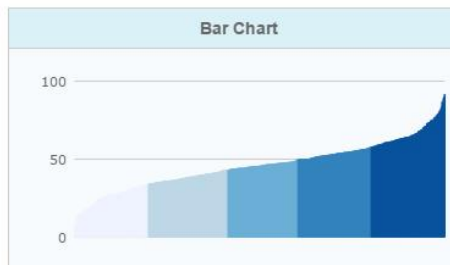
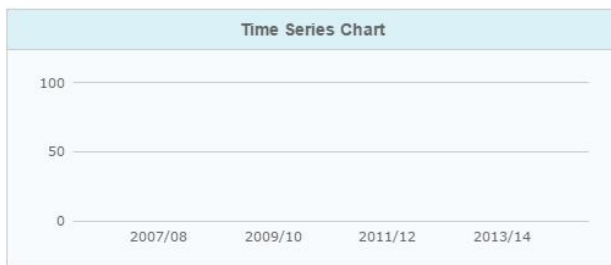
- ☒ NI Wards
 - 5.8 - 34.1
 - 34.2 - 42.9
 - 43.0 - 49.4
 - 49.5 - 57.8
 - 57.9 - 91.7
- ☐ GP Practice
- ☒ Hospitals
- ☐ Dentists
- ☐ Local Government District 2015
- ☐ Outcomes Group/ HSCT
- ☐ Locality Planning Groups
- ☐ Sure Starts



Data Table

Name	Percentage Mums who breastfed at Hospital Discharge (Source: CHS) (2014/15)
Abbey	52.2
Abbey Park	44.4
Academy	27.8
Aghagallon	51.5
Aghanloo	28.3
Agivey	54.2
Ahoghill	40.7
Aldergrove	58
Altmore	61.2
Altnagelvin	34.5
Andersonstown	37
Annagh	58.5
Annalong	52.6

Clear x Filter x



Comparison / Totals Table

Name	Percentage Mums who breastfed at Hospital Discharge (Source: CHS) (2014/15)
Belfast OPG	46.7
Northern Ireland	45.5
Northern OPG	44.2

CYPSP, Northern Ireland



TÚSLA
An Ghníomhaireacht um
Leanaí agus an Teaghlach
Child and Family Agency

An Roinn Leanaí
agus Gnóthaí Óige
Department of
Children and Youth Affairs

Healthy

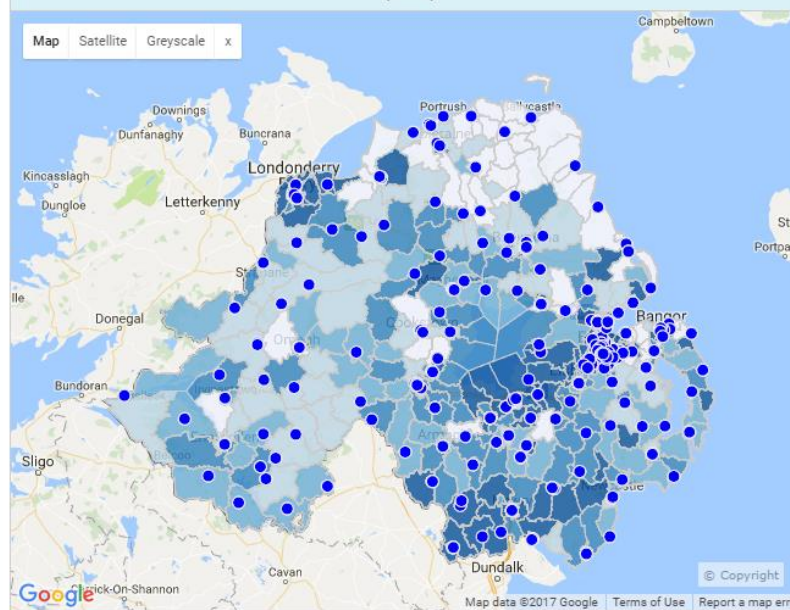
Data Filter

Help Print Share

Legend

- ☒ NI Wards
 - ☐ 40.0 - 158.0
 - ☐ 158.1 - 202.0
 - ☐ 202.1 - 256.8
 - ☐ 256.9 - 328.8
 - ☐ 328.9 - 1,137.0
- ☒ GP Practice
- ☐ Hospitals
- ☐ Dentists
- ☐ Local Government District 2015
- ☐ Outcomes Group/ HSCT
- ☐ Locality Planning Groups
- ☐ Sure Starts

Outcome: Healthy >> Number of G.P Registrations Children Aged 0-5 years (Source: NINIS) (2015)

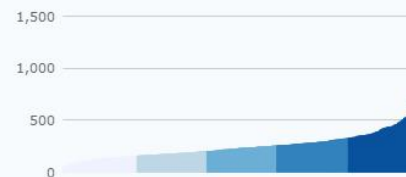


2006 2007 2008 2009 2010 2011 2012 2013 2014 2015

Time Series Chart



Bar Chart



Data Table

Name	Number of G.P Registrations Children Aged 0-5 years (Source: NINIS) (2015)
Abbey	199
Abbey Park	206
Academy	98
Aghagallon	433
Aghanloo	354
Agivey	139
Ahoghill	312
Aldergrove	271
Altmore	285
Altnagelvin	446
Andersonstown	287
Annagh	295
Annalong	237
Antiville	135

Clear X Filter X

Comparison / Totals Table

Name	Number of G.P Registrations Children Aged 0-5 years (Source: NINIS) (2015)
Belfast OPG	27,865
Northern Ireland	148,646
Northern OPG	35,556

CYPSP, Northern Ireland



TÚSLA
An Ghníomhaireacht um
Leanaí agus an Teaghlach
Child and Family Agency

 An Roinn Leanaí
agus Gnóthaí Óige
Department of
Children and Youth Affairs

Safety

Data Filter Help Print Share

Legend

☒ Northern Ireland Wards

- 0.0 - 3.8
- 3.9 - 5.8
- 5.9 - 9.1
- 9.2 - 13.9
- 14.0 - 42.0

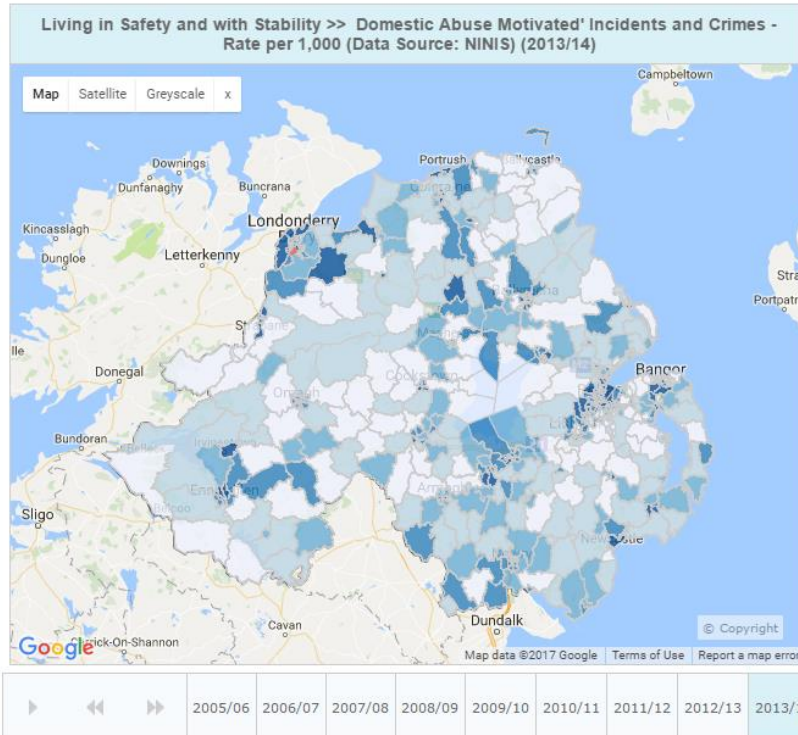
☐ Local Government District

☐ Outcomes Group/ HSCT

☐ Locality Planning Group

☐ Sure Starts

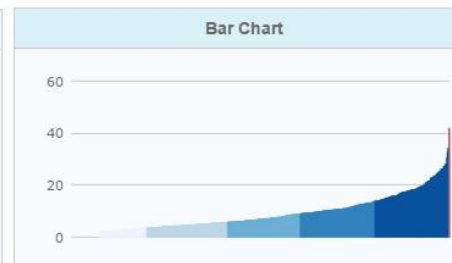
☐ Local Government District 2015



Data Table

Name	Domestic Abuse Motivated' Incidents and Crimes - Rate per 1,000 (Data Source: NINIS) (2013/14)
The Diamond	42
Greystone (Limavady)	34.6
Antville	34.4
Hilden	32.9
Shaftesbury	30.6
Water Works	28.4
Daisy Hill	28.1
Castle Demesne	27.7
Ardoyne	27.4
Coolessan	27.1
Westland	26.5
The Mount	26.4
Church	26.3

Clear Filter



Comparison/Totals Table

Name	Domestic Abuse Motivated' Incidents and Crimes - Rate per 1,000 (Data Source: NINIS) (2013/14)
Belfast OPG	11.8
NI	9.1
Northern OPG	7.9

CYPSP, Northern Ireland



TÚSLA
An Ghníomhaireacht um
Leanaí agus an Teaghlach
Child and Family Agency

An Roinn Leanaí
agus Gnóthaí Óige
Department of
Children and Youth Affairs

Learning

Data Filter

Help Print Share

Legend

☒ Northern Ireland Wards

55.0 - 180.0

180.1 - 230.0

230.1 - 284.0

284.1 - 370.0

370.1 - 1,260.0

☐ Pre-School

☐ Nursery Schools

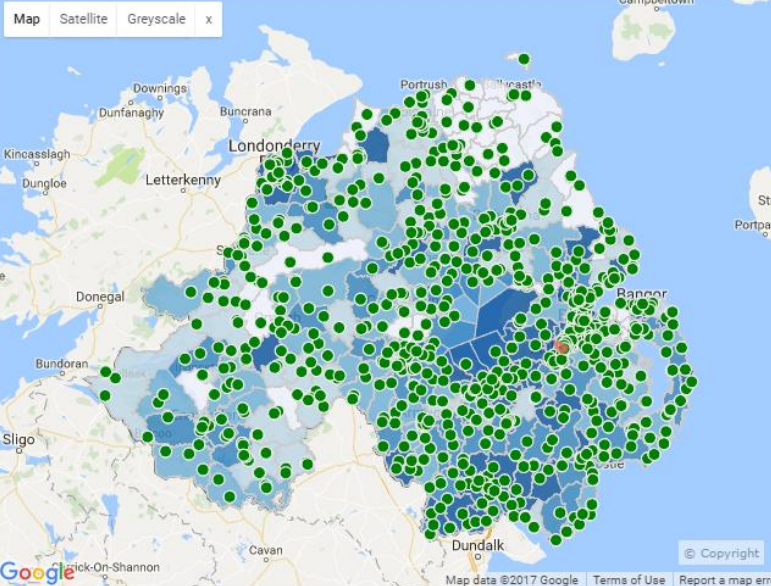
☒ Primary Schools

☐ Post-Primary Schools

☐ Outcomes Group /
HSCTs

☐ Local government
District 2015

Enjoying Learning and Achieving >> Number at Primary School P1-P7 (Data Source: NINIS) (2014/15)

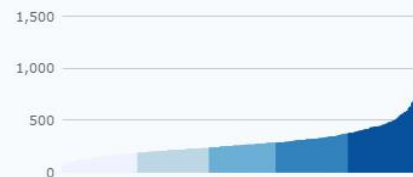


2007/08 2008/09 2009/10 2010/11 2011/12 2012/13 2013/14 2014/15

Time Series Chart



Bar Chart



Data Table

Name	Number at Primary School P1-P7 (Data Source: NINIS) (2014/15)
Derryaghy	1,260
Culmore	1,085
Mallusk	980
Ballymacoss	910
Shantallow West	900
Collin Glen	765
Conlig	715
Kernan	695
Glenavy	680
Legoniel	675
Crevagh	670
Ardoyne	665
Glencolin	635
Drumgask	630

Clear Filter

Comparison/Totals Table

Name	Number at Primary School P1-P7 (Data Source: NINIS) (2014/15)
Belfast OPG	28,395
Northern Ireland	165,550
Northern OPG	41,275
South-Eastern OPG	30,835

CYPSP, Northern Ireland



TÚSLA

An Ghníomhaireacht um Leanaí agus an Teaghlach
Child and Family Agency



Learning

Data Filter

Help Print Share

Legend

☒ Northern Ireland Wards

☐ 0.0 - 39.7

☐ 39.8 - 50.1

☐ 50.2 - 58.3

☐ 58.4 - 67.1

☒ 67.2 - 95.0

☐ Pre-School

☐ Nursery Schools

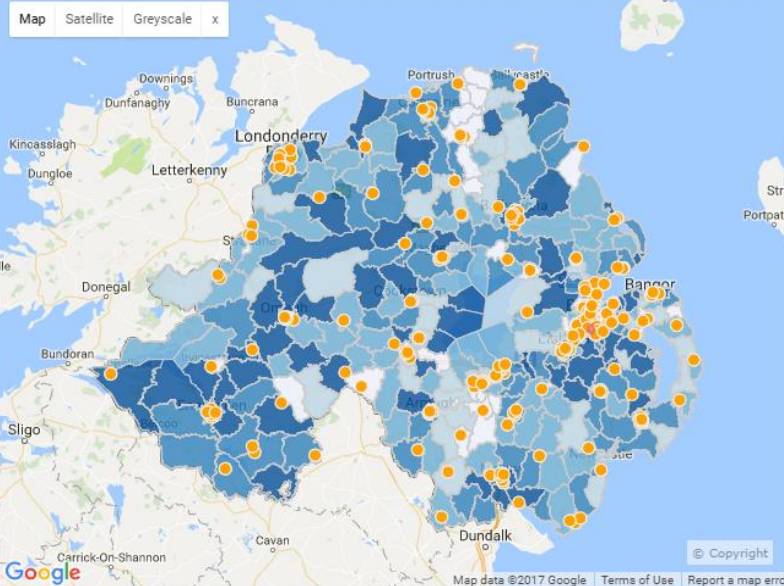
☐ Primary Schools

☒ Post-Primary Schools

☐ Outcomes Group / HSCTs

☐ Local government District 2015

Enjoying Learning and Achieving >> Percentage of Leavers Achieving 2+ A levels (or equiv) (Data Source: NINIS) (Jun 2013)

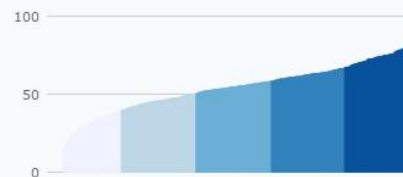


Jun 2006 Jun 2007 Jun 2008 Jun 2009 Jun 2010 Jun 2011 Jun 2012 Jun 2013

Time Series Chart



Bar Chart



Data Table

Name	Percentage of Leavers Achieving 2+ A levels (or equiv) (Data Source: NINIS) (Jun 2013)
Stranmillis	95
Malone	91.9
Stormont	90.2
Augher	88.6
Clady	88.6
Dunnamore	88
Dromore	87
Burleigh Hill	86.8
Ballynashallog	86.5
Cavehill	86.1
Belcoo and Garrison	85.7
Dunmurry	84.9
Princetown	84.6

Clear Filter

Comparison/Totals Table

Name	Percentage of Leavers Achieving 2+ A levels (or equiv) (Data Source: NINIS) (Jun 2013)
Belfast OPG	55.8
Northern Ireland	55.1
Northern OPG	53.9

CYPSP, Northern Ireland



TÚSLA
An Ghníomhaireacht um
Leanaí agus an Teaghlach
Child and Family Agency

An Roinn Leanaí
agus Gnóthaí Óige
Department of
Children and Youth Affairs

Economic

Data Filter

Help Print Share

Legend

☒ Northern Ireland Wards

☐ 0.0 - 30.0

☐ 30.1 - 50.0

☐ 50.1 - 80.0

☐ 80.1 - 124.0

☒ 124.1 - 910.0

☐ Local Government District

☐ Outcomes Group/ HSCT

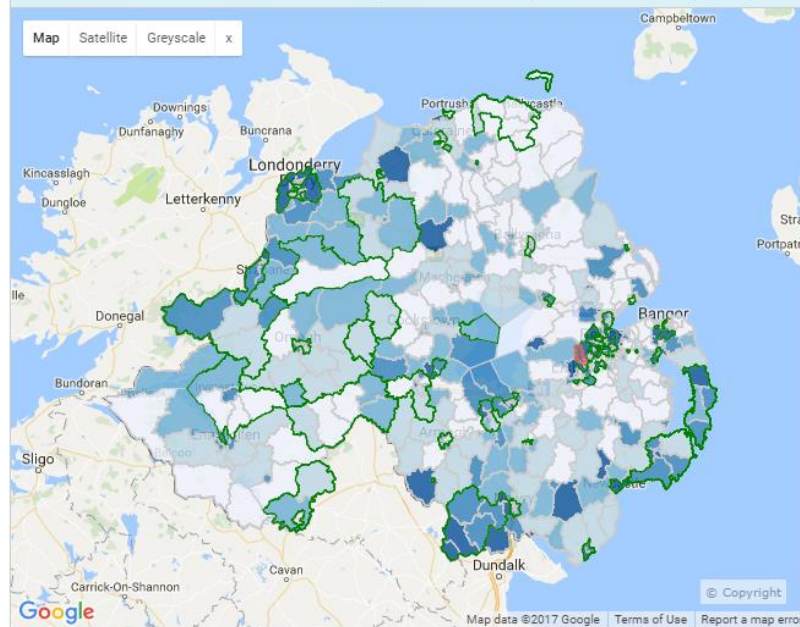
☐ Locality Planning Group

☒ Sure Starts

☐ Local Government District 2015

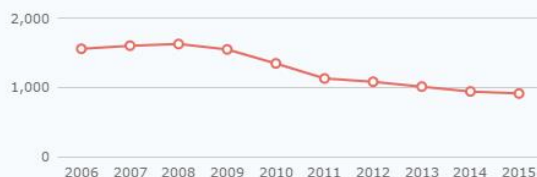
Economic >> Children in Income Support Households (Data Source: NINIS) (2015)

Map Satellite Greyscale x



Map data ©2017 Google Terms of Use Report a map error

Time Series Chart



Bar Chart



Data Table

Name	Children in Income Support Households (Data Source: NINIS) (2015)
Collin Glen	910
Ardoyne	710
Shantallow West	660
Whiterock	610
Water Works	600
Culmore	530
Upper Springfield	520
Falls	510
Clonard	480
Derryaghy	460
Crevagh	450
Beechmount	440
Crumlin (Belfast)	420
Ballymacarrett	410

Clear Filter

Comparison /Totals Table

Name	Children in Income Support Households (Data Source: NINIS) (2015)
Belfast OPG	14,170
Northern Ireland	54,150
Northern OPG	10,980
South-Eastern OPG	8,810

CYPSP, Northern Ireland

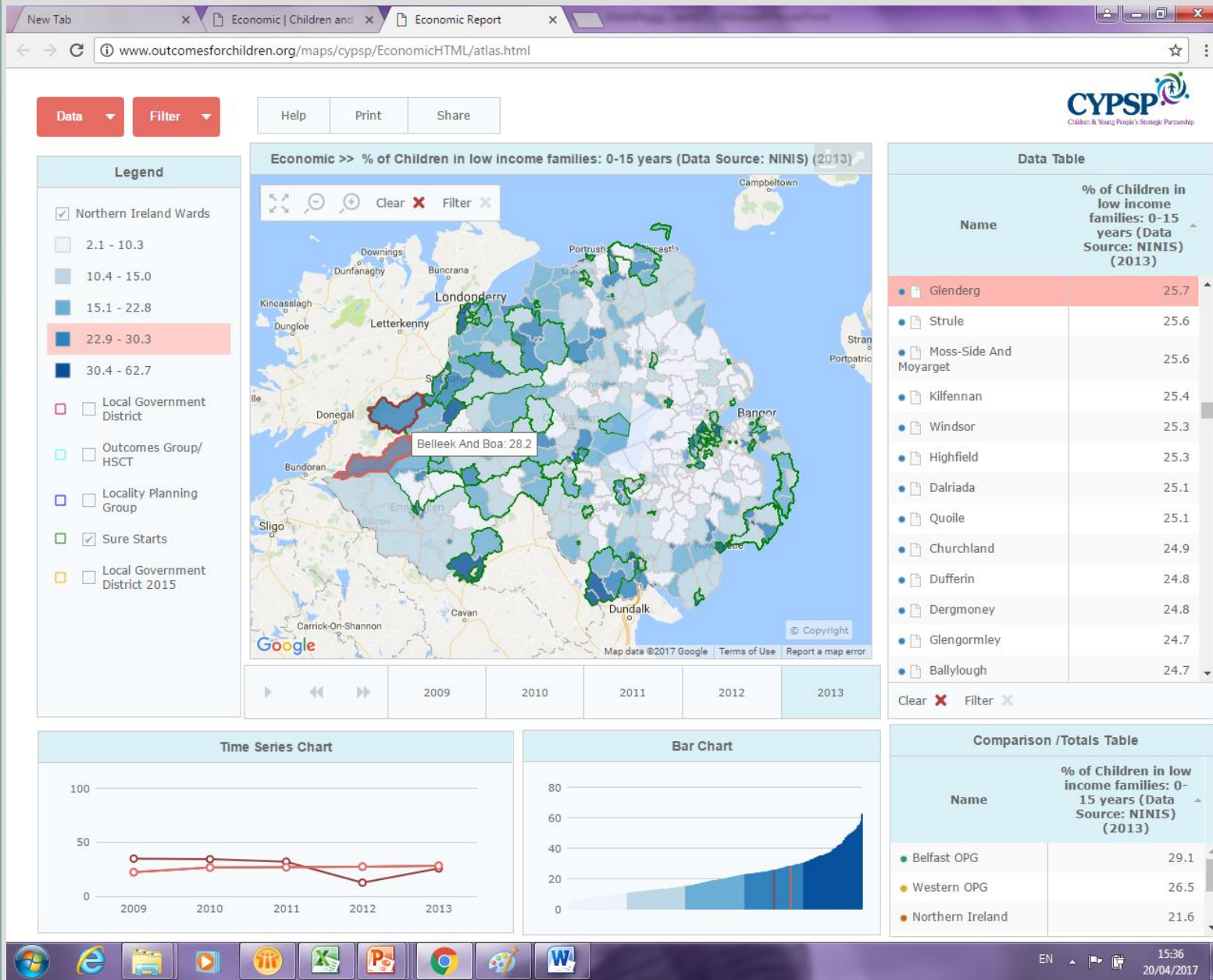


TÚSLA

An Ghníomhaireacht um
Leanaí agus an Teaghlach
Child and Family Agency

An Roinn Leanaí
agus Gnóthaí Óige
Department of
Children and Youth Affairs

Economic



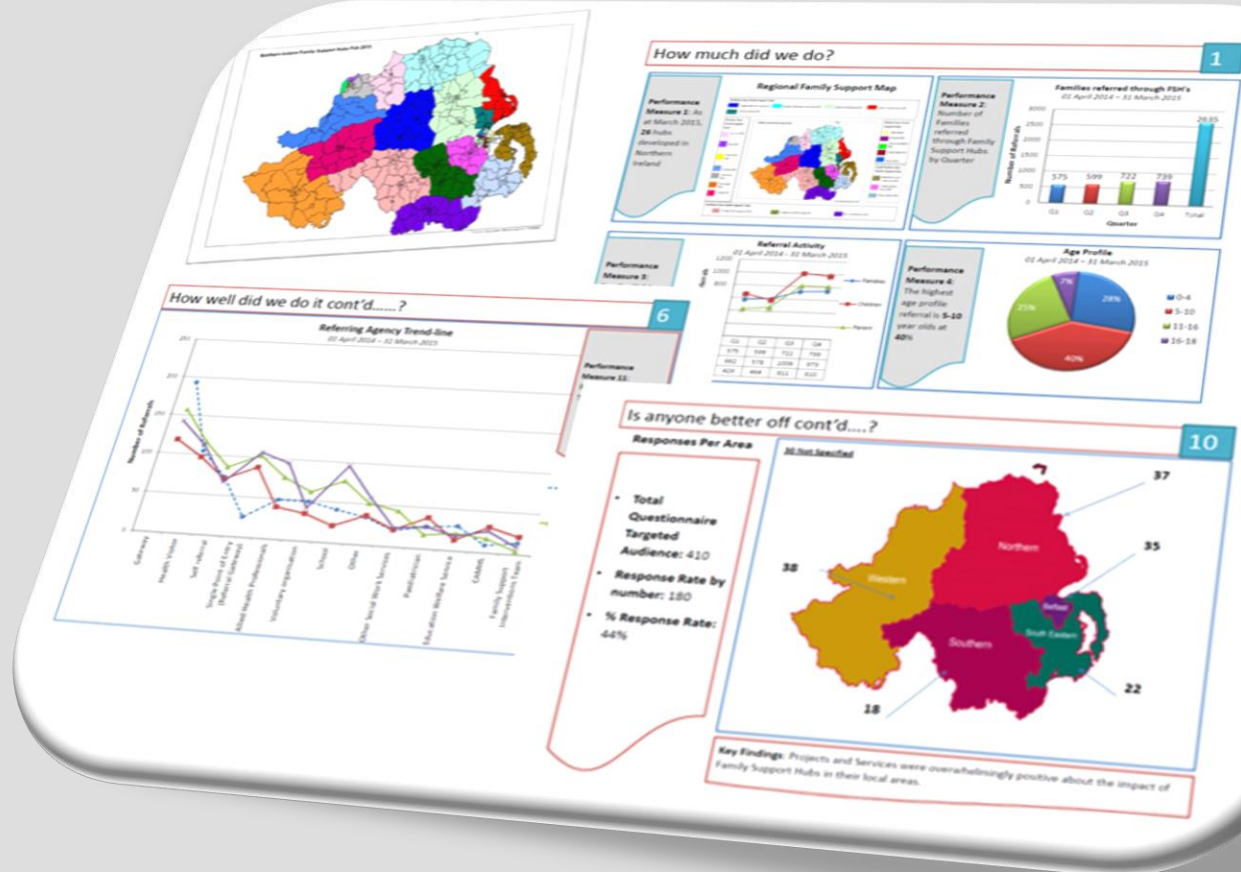
CYPSP, Northern Ireland

TÚSLA

An Ghníomhaireacht um
Leanaí agus an Teaghlach
Child and Family Agency



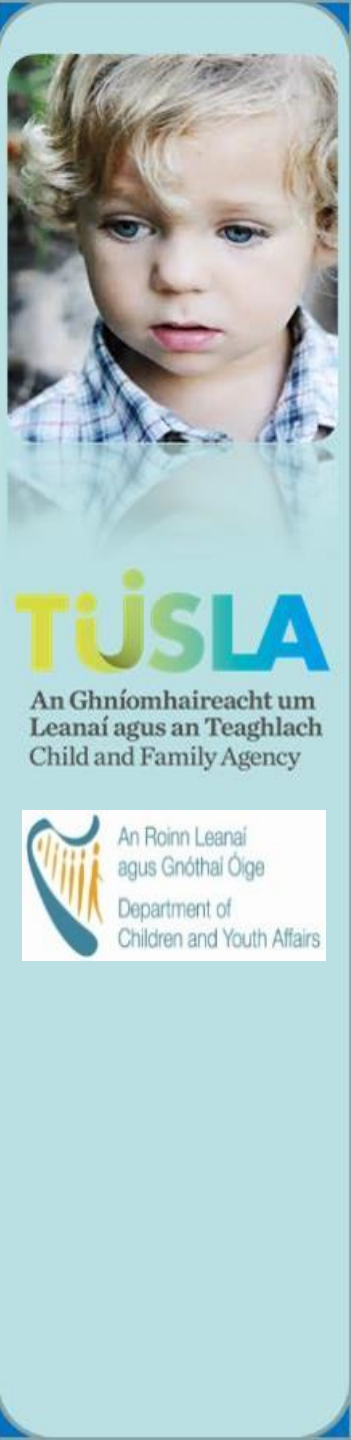
An Roinn Leanaí
agus Gnóthaí Óige
Department of
Children and Youth Affairs



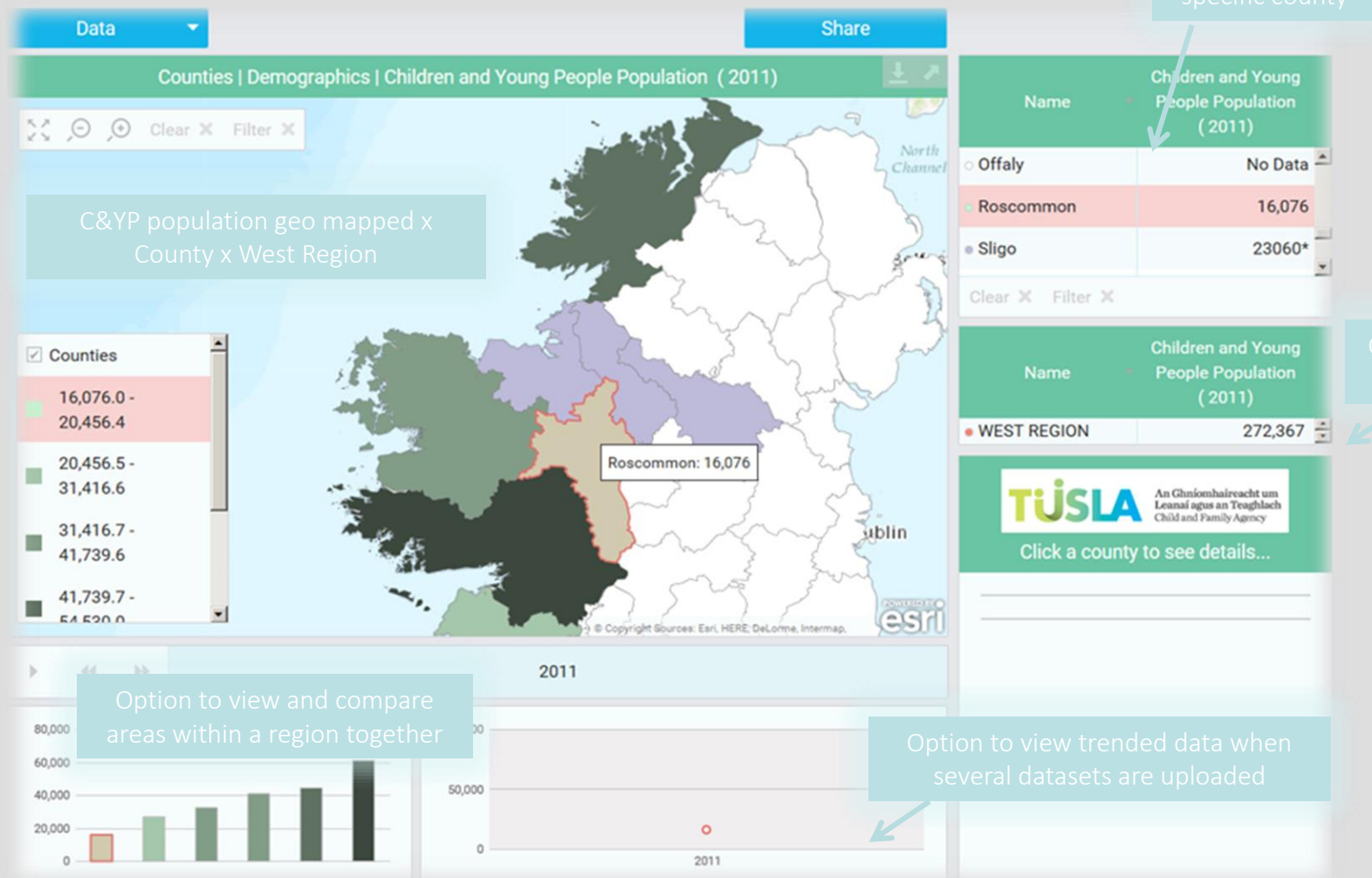
Visuals

The following provides an sample illustration of the potential use of an interactive mapping system within the ROI.

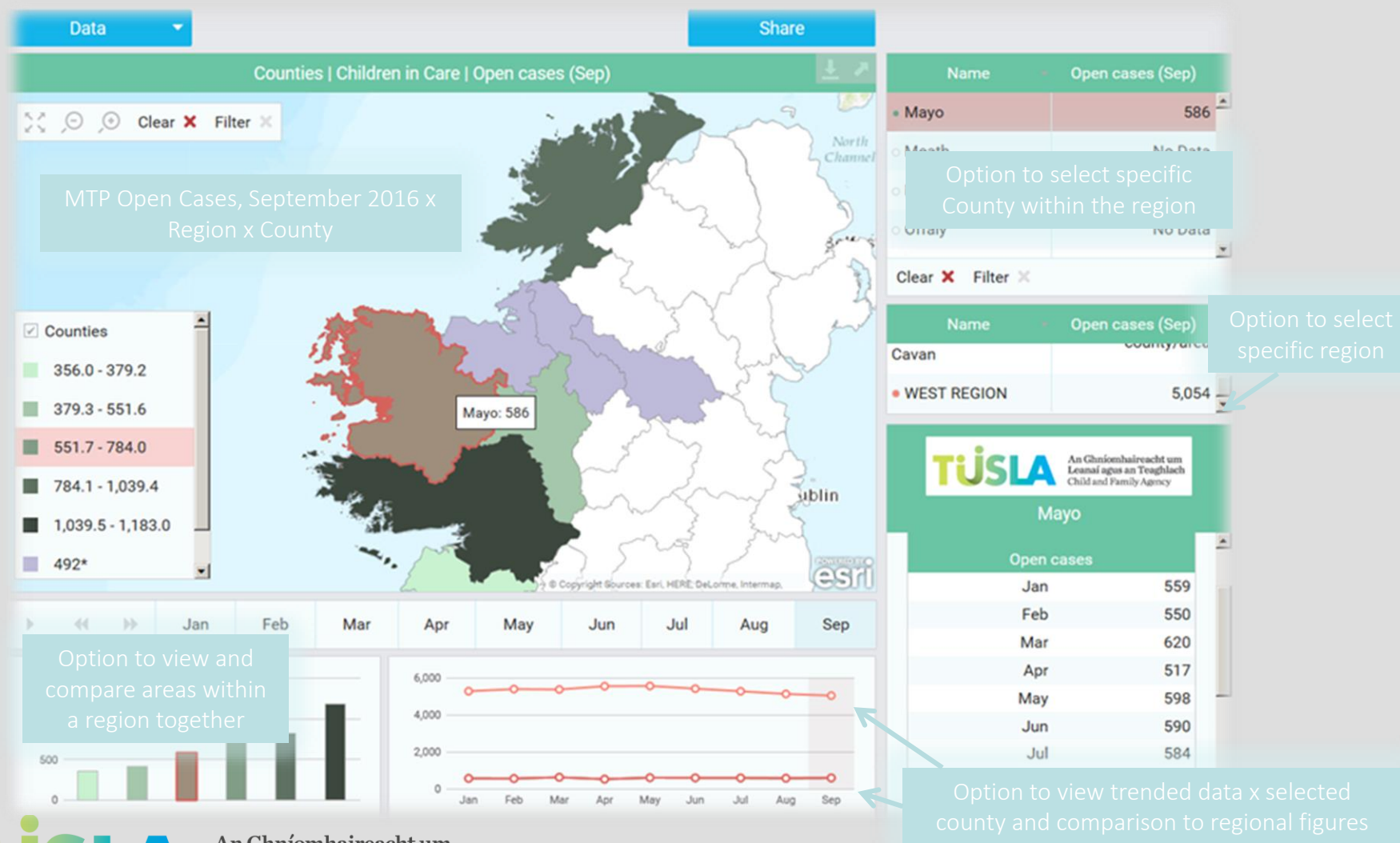
The slides have been based on a ‘mock up’ only at this stage until system development has been progressed.



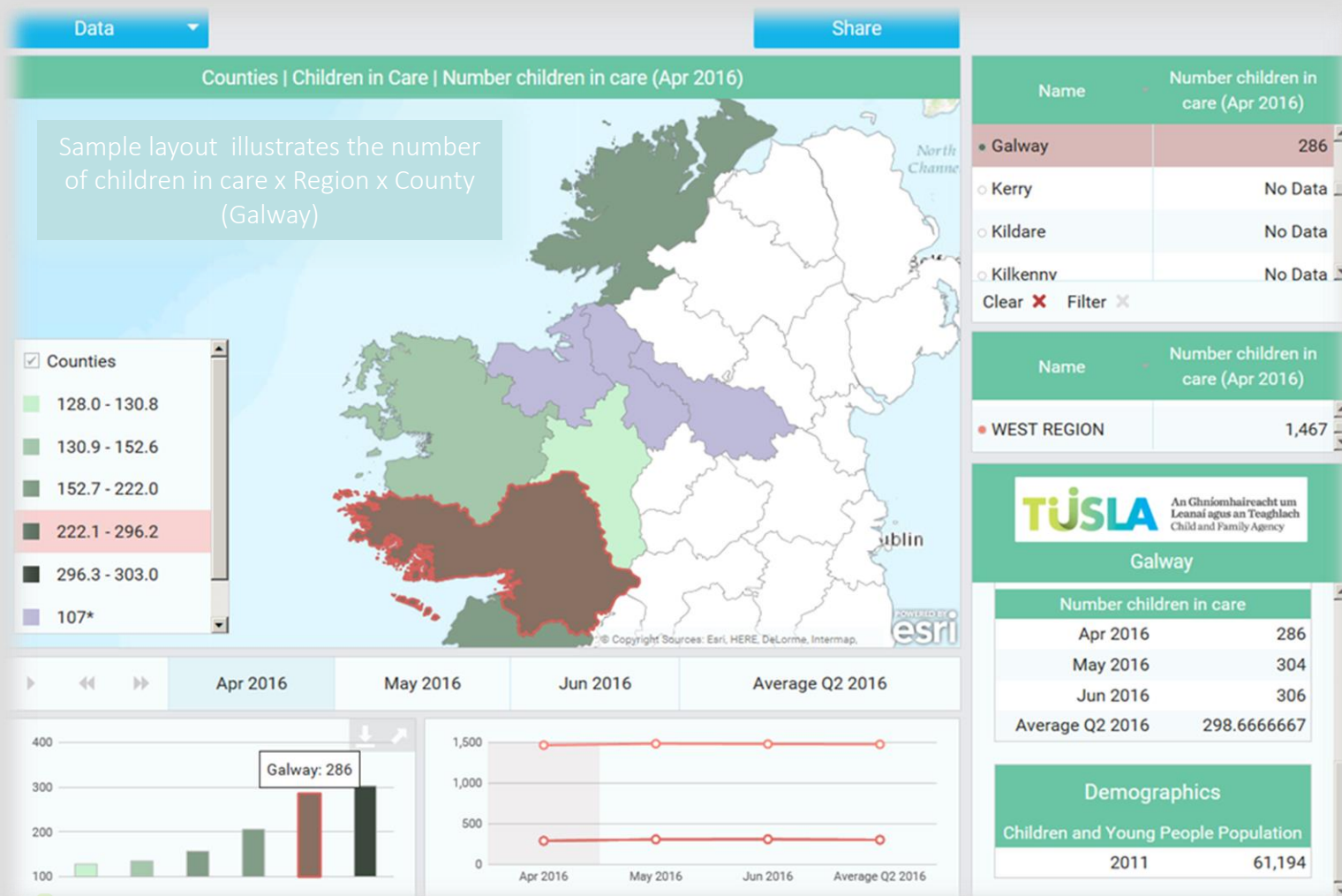
Sample Technical Solution



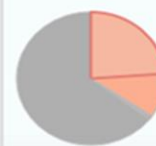
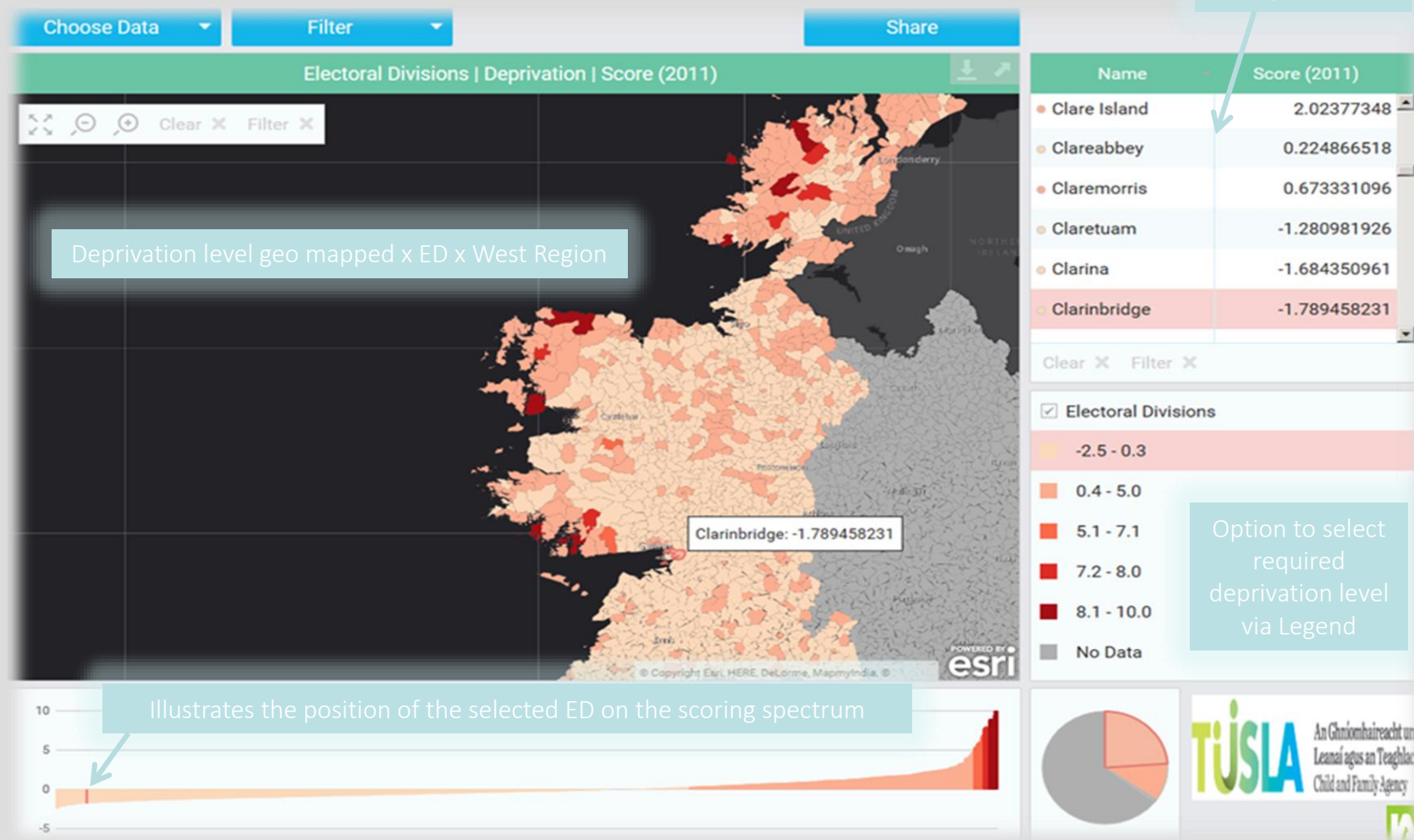
Sample Technical Solution



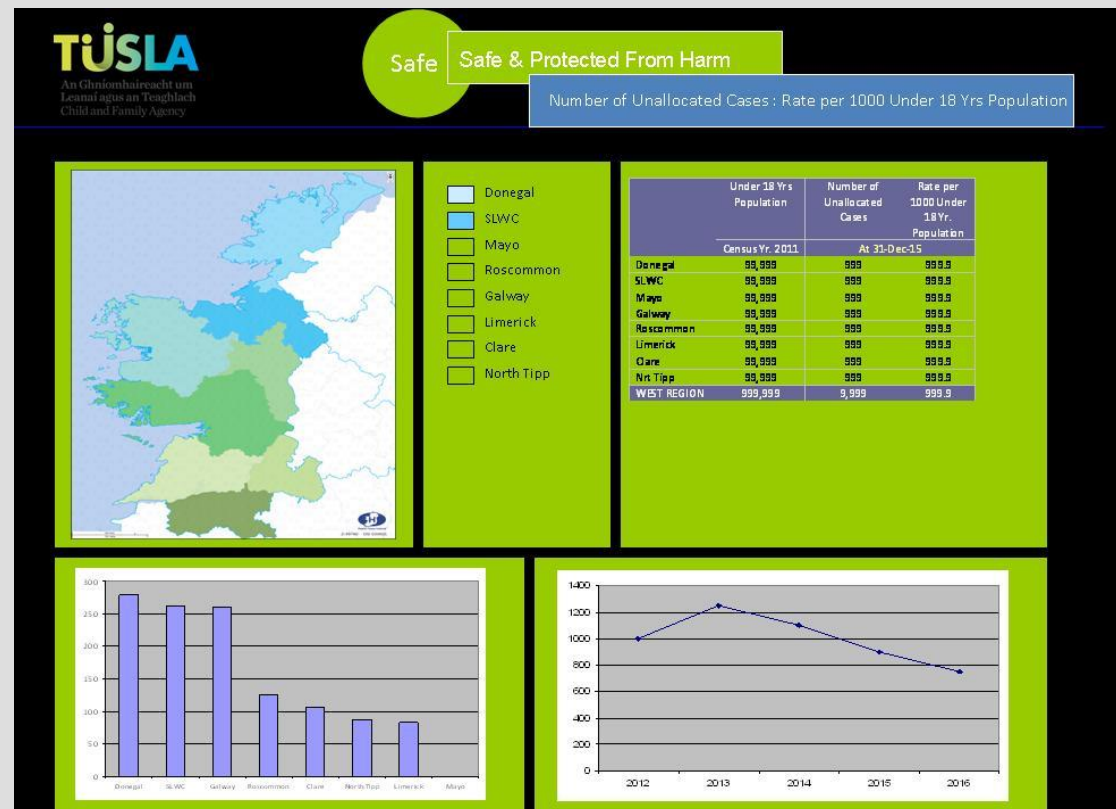
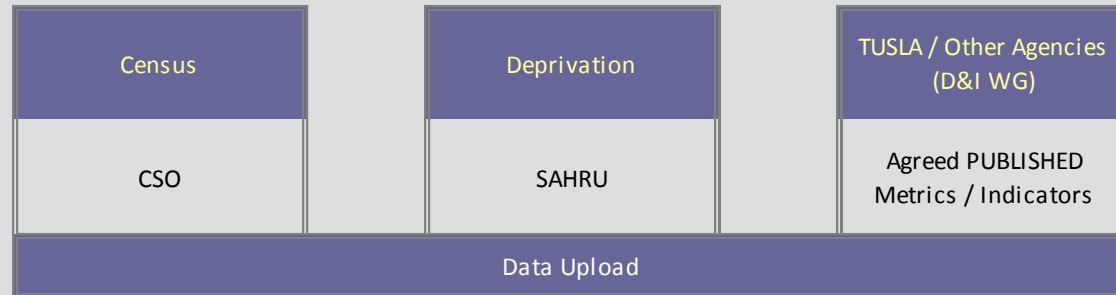
Sample Technical Solution



Sample Technical Solution



Visuals



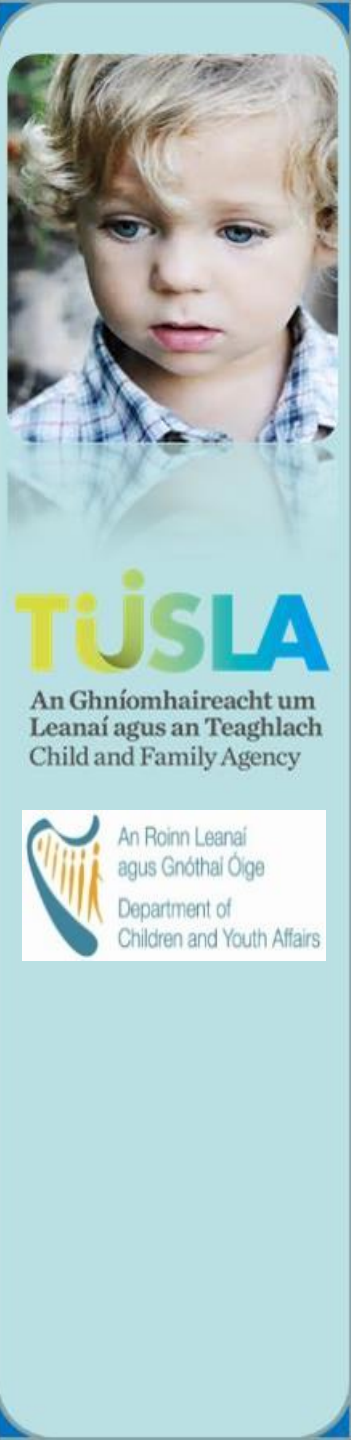
Children & Young People's Services Committees

To date, significant effort has been made by CYPSCs in order to collect, collate, interpret and analysis data sets in order to produce Children & Young People's Plans.

Louth CYPSC

It has been identified that there is a need for children & young people's planning documents to be updated regularly so that data informed decisions can be taken annually.

As previously demonstrated in this presentation the proposed national Data & Information Hub will provide one national centralised open data hub that will host agreed and relevant published data to ensure system users have access to quality information that will inform children & young people's services planning.



Children & Young People's Services Committees

Thank You

Any Questions

