



Limerick City Children's Services Committee

Developing an Integrated Model of Early
Intervention and Prevention: Learning and
Application from Start Right Limerick (a
NEYAI Project)



The Limerick City Children's Services Committee

Child and Family Support Agency

*National Association of Principals
and Secondary Principals*

An Garda Síochána

Irish Primary Principals Network

*Limerick and Clare Education
Training Board*

PAUL Partnership

*Department of Education and
Skills*

*National Education Welfare
Board*

Health Service Executive

Probation Services

Limerick (City) Council

Background

Limerick CSC was one of the four pilot CSCs (along with Dublin City, South County Dublin and Donegal) established by the then Office for the Minister for Children and Youth Affairs in 2007.

The Limerick CSC was established originally to cover Limerick City only. With the integration of Limerick City and County Council, the Limerick CSC will be expanding to take on a county-wide remit.

Population (based on 2011 census figures)

Limerick City: 57,106

Limerick County: 134,703

The Objectives

- Facilitate, coordinate and maximise interagency collaboration in Limerick City in relation to child services
- Secure support for the joint implementation of policies and initiatives which require inter-agency action
- Assist the implementation of policies and initiatives which require inter-agency action
- Foster cross-agency communication between the various associated agencies and service providers in Limerick City
- Support the Limerick Regeneration Project

Limerick City CSC Projects

- **Limerick Assessment of Need System (LANS)/Common Assessment Framework (CAF)**

To ensure that the needs of children are assessed accurately and that appropriate and integrated supports are put in place to meet those needs.

Restorative Practices

To support the Embedding of Restorative Practices in school, community and home settings in order to reduce misbehaviour and bullying, violence and crime and to foster environments where young people can learn, grow and develop relationships in a positive environment.

- **Parenting Support Programme**

Parenting Support Network To support sharing of information and collaboration among services providing parenting support and to ensure that parents/carers have access to appropriate parenting support

Homemaker Family Support Service A Home Based Family Support Service that emphasises working with parents in a practical way to support them in their parenting capacity and household routines.

Limerick City CSC Projects (cont.)

■ Research and Communication

To collect up-to-date information on the needs and experiences of children and families in Limerick and to facilitate the sharing of information across children and family services.

■ City-wide Children and Youth Forum

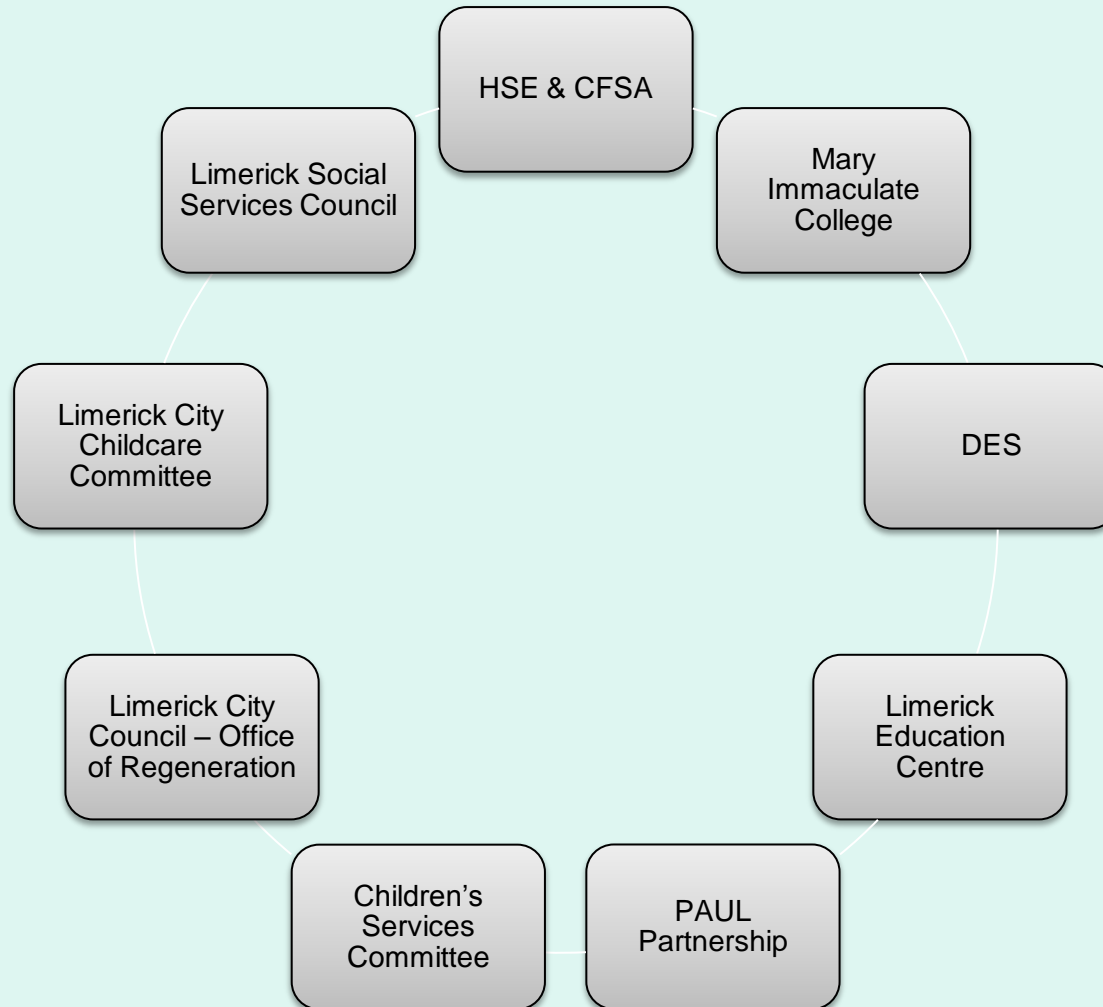
Four local youth fora (Northside, Rosbrien, Southill, St. Mary's) currently operate in Limerick City. They are groups of multi-agency practitioners meet regularly to share information and good practice and to develop integrated approaches to supporting to children and young people in need.

A City-Wide Children and Youth Forum has been established to build the capacity of the local fora, to develop shared policies and procedures and to link with the CSC.

Limerick City CSC Projects (cont.)

- **Start Right** To achieve better outcomes for young children (0-6) on the south side of Limerick City in the context of health, education, development and overall well-being, through effective engagement with families in the model area, the facilitation of multi-agency collaboration and up-skilling of early childhood care and education practitioners.

Start Right Consortium



Primary objectives

(a) Enhance the capacity of parents, families, and services to work collaboratively in the best interests of children

&

(a) Develop integrated work practices and resource-sharing in the early years across statutory, community and voluntary agencies

End point?

- A population approach to improving parenting confidence and competence
- A child-centred and responsive approach to meeting the needs of children and families embedded within the work practices of all agencies
- Awareness among parents and families of all services and resources available to them, facilitated by clear access routes
- ↓ duplication, ↔ accountability

How?

- **Community outreach:** Community wraparound – multiple sites, single message
- **Professional development:** Up-skilling / opening up settings beyond enrolment
- **Learning & research:** Monitoring and reconfiguring as the project unfolds / generating a replicable evidence-based model

Community Wraparound Programme

- Standard practice yields poor outcomes when families are not fully engaged in decision-making about issues that affect them or when families feel that the support(s) they receive are irrelevant in the context of their particular needs
- Families with children with complex needs require a reliable process to partner with service providers in designing and delivering supports to meet those needs.

Do we have to choose?

Principled?

child-centred

family-driven

team-based

collaborative

community-based

strengths-based

individualised

culturally competent

outcomes-based

natural supports

Pragmatic?

real

tangible

sustainable

respectful

How Are Our Kids Now?

