



# **Waterford Children and Young People's Services Committee**

## **Children and Young People's Plan 2016 - 2018**

## Contact

The Waterford Children and Young People's Services Committee welcomes comments, views and opinions about our Children and Young People's Plan.

Please contact:

Claire McNamara, Co-ordinator  
Waterford Children & Young People's Services Committee  
Community Care Centre,  
Cork Rd, Waterford

051-842947

[Claire.McNamara@tusla.ie](mailto:Claire.McNamara@tusla.ie)

Copies of this plan are available on: [www.CYPSC.ie](http://www.CYPSC.ie) / [www.waterfordlife.ie](http://www.waterfordlife.ie)

# Contents

Foreword.....	4
<b>Section 1: Introduction .....</b>	<b>5</b>
Background to Children and Young People’s Services Committees .....	8
Who we are.....	9
Achievements to date.....	11
How the Children and Young People’s Plan was developed .....	12
<b>Section 2: Socio-Demographic Profile of Waterford.....</b>	<b>14</b>
<b>Section 3: Overview of Services to Children and Families in Waterford.....</b>	<b>23</b>
<b>Section 4: Local Needs Analysis in Waterford.....</b>	<b>28</b>
<b>Section 5: Summary of Children and Young People’s Plan for Waterford.....</b>	<b>40</b>
<b>Section 6: Action Plan for Waterford County Children and Young People’s Services Committee....</b>	<b>41</b>
<b>Section 7: Monitoring and Review .....</b>	<b>58</b>
<b>Section 8: Appendices.....</b>	<b>59</b>

## Foreword

As Chairperson of Waterford Children & Young People's Services Committee, I am privileged to present the first Action Plan. It is a credit to all members of the CYPSC to develop and implement this plan which is the end product of sterling work during a period of extreme austerity. The action plan has little cost attached and truly represents a fine example of collaborative practice across all partner agencies. The time and commitment given by all, to establish and maintain Waterford Children & Young People's Services Committee has been relentless.

The benefits of the Committee has clearly strengthened inter agency functioning, established relationships and partnerships that have improved better outcomes for children & young people. This is reflected in the establishment of the Restorative Practice approach across the statutory, community & voluntary organisations.

The willingness to engage, to think outside the box and to practice beyond the singular purpose and function of any one agency has been heart warming.

The Action Plan reflects a set of informed actions gathered from local knowledge, shaped by empirical data and evidence but equally important from members of strategic partners working within the communities of Waterford City and County. The focus groups comprised of frontline practitioners have been an essential component that has brought real purpose and energy to the WCYPSC.

The goals and targets set out in the Action Plan are realistic and attainable and therefore meaningful. The CYPSC was always conscious of the lack of core funding to develop services and therefore a focus throughout the first few years was to strengthen collaborative working in order to maximise opportunities for creating better outcomes for children & young people as set out in the "Better Outcomes – Brighter Futures" policy framework document.

By working together and by ensuring that we listen to children, young people and parents we will strive to make Waterford a better place for our children to grow up healthy & safe and to reach their full potential in life.

Jim Gibson  
Chair  
Waterford Children & Young People's Services Committee

## **Section 1: Introduction**

### ***Purpose of Children & Young People's Services Committees***

The purpose of the Children and Young People's Services Committees is to secure better outcomes for children and young people through more effective integration of existing services and interventions at local level.

CYPSCs work towards the five national outcomes for children and young people in Ireland. These are that children and young people

- 1. Are active and healthy, with positive physical and mental wellbeing**
- 2. Are achieving full potential in all areas of learning and development**
- 3. Are safe and protected from harm**
- 4. Have economic security and opportunity**
- 5. Are connected, respected and contributing to their world**

### **Children and Young People's Services Committees in Ireland – Policy Context**

The Office of the Minister for Children and Youth Affairs (OMCYA), now the Department of Children and Youth Affairs, established the Children's Services Committees in 2007 with the purpose of improving outcomes for children and families at local and community level. In 2014 these committees were renamed as Children & Young People's Services Committees (CYPSC) to take account of the age range 0-24 years identified in *Better Outcomes Brighter Futures: National Policy Framework for Children & Young People 2014 – 2020*

Since their establishment, CYPSCs have increased incrementally in number and are a key structure identified by Government to plan and co-ordinate services for children and young people in every county in Ireland.

CYPSCs bring together a diverse group of agencies in local county areas to engage in joint planning of services for children and young people. All major organisations and agencies working locally on behalf of children and young people are represented. These committees work to improve the lives of children, young people and families at local and community level through integrated planning and improved service delivery.

The development of Children & Young People's Services Committees has been influenced and informed by major Government policies:

*Better Outcomes Brighter Futures: National Policy Framework for Children & Young People 2014 – 2020 (2014)* outlines the government's agenda and priorities in relation to children & young people 0-25. The framework is underpinned by the UN Convention on the Rights of the Child; it is outcomes focused and based on the 5 National Outcomes for children & young people which are that all children and young people are:

- Active & healthy both physically & mentally;
- Are achieving their full potential in learning & development;
- Are safe & protected from harm;
- Have economic security & opportunity;
- Are connected, respected & contributing to their world.

In the "*High-level Policy Statement on Supporting Parents & Families*" (DCYA, 2015) which flows from the "Better Outcomes, Brighter Futures" policy, the Minister for Children & Youth Affairs reiterates that supporting and improving parental well-being is one of the best ways to improve child well-being and that the role of supporting families is everyone's business. A wide range of statutory services such as health, education, An Garda Síochána & local authorities, alongside Tusla, the Child & Family Agency, all have a responsibility to contribute to the protection and welfare of children through the strengthening of the capacity of families and communities in partnership with Community & Voluntary Organisations.

The Children & Young People's Services Committees are identified in this policy as the key forum for engagement between service providers in relation to service need, planning and delivery.

*Towards 2016 Ten-Year Framework Social Partnership Agreement 2006-2016.* (2006) This document provides an overarching framework for Government to address key challenges which individuals face at each stage of the life cycle. Towards 2016 makes a number of specific commitments in relation to Children's Services Committees: "At local level a multi-agency Children's Committee will be established within each of the City/County Development Boards. These committees will be chaired by the HSE who are best placed to drive this initiative to achieve coordinated and integrated services."

*Agenda for Children's Services: A policy handbook (2007).* The Agenda sets out the strategic direction and key goals of public policy in relation to children's health and social services. At the core of the Agenda is the promotion of good outcomes for children.

*Transforming Public Services. (2008)* This report recommends a range of initiatives to improve services and outcomes for all citizens through a more integrated public service. "In specific areas where a number of agencies are interacting with the same client group, protocols should be developed for effective interaction and case-working."

*Report of the Commission to Inquire into Child Abuse, 2009 Implementation Plan (Ryan Report, 2009)* The Ryan Report states that interagency, multidisciplinary work is vital to the promotion of good child protection practice and to the provision of good and safe service delivery to service users. The purpose of Children's Services Committees is described in this report as ensuring "that agencies work together strategically to achieve intended outcomes for children and families and value for money. They have been set up specifically to enhance interagency communications and working in partnership to meet the needs of vulnerable children and families." Also "Managers and staff of the various agencies working in an area with vulnerable children and families need to cooperate more effectively to ensure children's needs are met."

*Report of the Task Force on the Child and Family Support Agency (2012)* The Task Force recognised that Children's Services Committees provide a strong basis for interagency working and integrated service delivery to ensure effective planning and coordination of services at local level. "Universal and targeted services provided by the new Agency, together with services for children and families provided by other government departments or agencies and those provided by non-governmental organisations, must be coordinated and joined up on the ground where families and children live out their lives. Children's Services Committees should be the mechanism for doing this at local level. It is crucial that the Committees work to an overall national strategy and plan."

## **Waterford Children and Young People's Services Committee**

The Waterford Children & Young People's Services Committee was established during 2012 following on from the work of the West Waterford Forum which initiated the development of interagency planning & delivery of children's services in the west of the County.

Following the Government announcement that Waterford City & County Councils were to be amalgamated, it was agreed that one CYPSC would be established to encompass all of Waterford City & County.

That Local Authority amalgamation had a significant impact on other organisations with legally separate City & County structures such as the Childcare Committees, VEC, Local Development Partnerships & Comhairle na nÓg and also coincided with the re-configuring of a number of State Agencies such as FAS, Dept. of Social Protection, VEC & HSE.

It should be recognised that this was also a time of profound change for many local organisations, as many had only limited working relationships outside their own administrative area and very limited knowledge of the geography of the wider City & County area. While many agencies and organisations had participated in the various interagency structures in the past, very few had a role in both City & County structures due to the configuration of the administrative areas. For many organisations, the new CYPSC was the first time they had met and therefore the initial meetings took some time as members got to know each other and also awaited clarity on changes in organisational roles and realignments. .

The CYPSC membership comprises the senior managers from statutory and community/voluntary organisations across the Waterford area in order to ensure that there is capacity to make decisions and implement local change in line with the 5 National Outcomes for Children & Young People. This committee will oversee and direct the delivery of initiatives that will improve outcomes for all children and young people living in Waterford.

In particular, the CYPSC has sought to support overarching initiatives which will impact on how services work with children and young people and their families and has been a key interagency structure to advance the roll out of both the Restorative Practice Initiative and the Local Area Pathways / Meitheal model to support families in a more collaborative approach by both statutory agencies and community/voluntary organisations.



## Who are we

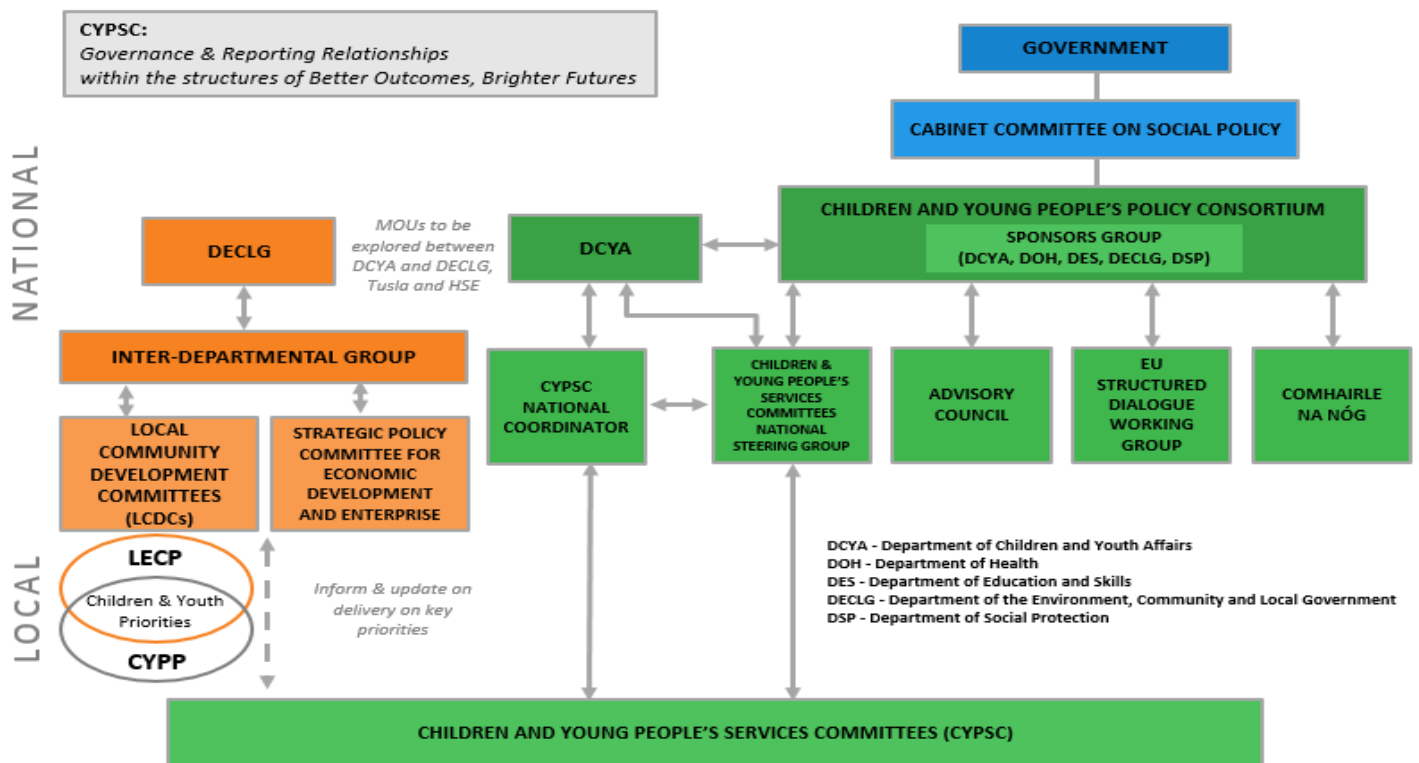
The membership of Waterford Children & Young People's Services Committee is drawn from a wide range of Statutory & Community / Voluntary agencies involved in the delivery of services to children & families in Waterford. The CYPSC is supported by a part time Co-ordinator. The CYPSC works closely at local level with the LCDC and reports nationally to the Dept. of Children & Youth Affairs.

---

### **Waterford Children & Young People's Services Committee - Members**

Jim Gibson (Chair)	Tusla
Michael Quinn (Deputy Chair)	Waterford City & County Council
Anne Goodwin	St. Brigids Community & Family Centre (FRC)
Mary Goode	Probation Service
Rose Murphy	Waterford Childcare Committee
Pat McBride	Waterford & Sth. Tipperary Community Youth Service
Maria Lindell	Waterford Area Partnership
Martin Fitzgerald	Waterford/Wexford Educational Training Board
Janet Twigg	Irish Primary Principals Network
Eric O'Brien	Foróige
Heather Kiely	Sacred Heart FRC
Catherine Joyce	Barnardos
Alex O'Keeffe	ISPCC
Vincent Daly	Principal Social Worker, PPFS, Tusla
Michael Leacy	Gardai
Anne Nolan	Integration Support Unit (Migrants Supports)
Niamh Maguire	WIT
Yvonne Power	Principal Social Worker, HSE Disability Services
Jenni Flynn	HSE Speech & Language Therapy Manager
Susan Murphy	HSE Primary Care Manager
Claire McNamara	Co-ordinator, Waterford CYPSC

---



Source : DCYA Blueprint for CYPSC

## CYPSC Subgroups

The CYPSC also has 6 Subgroups which meet regularly and have been instrumental in assisting with the identification of the local priority needs and the development of the work plan actions. The membership of the subgroups is comprised of frontline staff from across the agencies and geographical area which has ensured a wide participation in the work of the CYPSC. The Family Support Subgroup has also established a Parenting Task Group to develop a Parenting Strategy.

### The 6 CYPSC Subgroups

Information & Research	Education	Child & Youth Mental Health
Family Support	Community Based Adolescents	LAP (Local Area Pathways)

The CYPSC has developed a strong working relationship with the Local Community Development Committee (LCDC) of which the CYPSC Chairperson is a member. There are also strong CYPSC links with the Waterford Restorative Practice Network (WRPN) and the Waterford Comhairle na nÓg, both of whom have representatives on CYPSC subgroups. The CYPSC Co-ordinator also sits on the steering groups of both the WRPN and the Comhairle na nÓg on behalf of the CYPSC.

## Achievements to date

There have been a number of achievements to date in Waterford CYPSC

- Active participation by stakeholders in the development of the CYPSC & Subgroups – in total over 70 individual members
- Evolved thematic subgroup structures, processes & working relationships which are responsive to local conditions & resources and reflect the needs identified at local level.
- The CYPSC has developed strong working relationships with the Local Community Development Committee (LCDC), the Waterford Restorative Practice Network and the Waterford Comhairle na nÓg.
- The CYPSC has had input into the development of a number of local strategic plans including the LECP (Local Community & Economic Plan), Waterford Suicide Prevention Action Plan, SICAP (Social Inclusion & Community Activation Programme), & Restorative Practice Strategy plan.
- Waterford CYPSC is working collaboratively with all strategic partners to promote better outcomes for children and young people within wider strategic actions.
- The development of the Prevention Partnership & Family Support (PPFS) model and the establishment of the Meitheal model, this was assisted by the roll out of briefing sessions with support of CYPSC to over 400 frontline staff from organisations providing services to children & families. The initial phase delivered Meitheal training for Lead Practitioners and 4 Child & Family Support Networks have been established across the County
- A number of Consultations have been organised by CYPSC Subgroups with over 1000 children & young people, through the Comhairle na nOg, Youth Projects & Organisations, Schools & Preschools.
- Completed the Profile of services & needs analysis which involved a survey of 206 organisations providing services for Children & Young People and a number of focus groups & interviews with 75 professionals & frontline staff
- The CYPSC is identified as the key structure to assist in the embedding of Restorative Practice as an approach & ideology across Waterford. CYPSC has secured funding to support the roll out of the Restorative Practice Model in Waterford– over 120 trained in past 18 months & 11 local trainers and development of a Strategic Plan in order to achieve aim of ensuring that Waterford becomes a Restorative Community
- The CYPSC has worked collaboratively with the Waterford City & County Council and Waterford/Wexford ETB to initiate the development of a community services hub in East Co. Waterford
- Completion of 3 Year Action Plan

## **How the Children and Young People's Plan was developed**

The Waterford CYPSC Workplan was developed by the members of the Children & Young People's Services Committee and the 6 Subgroups over the period from January to June 2015. The plan is the result of a consultative and collaborative approach to identifying the needs of children & young people and lays out a set of priority actions which are intended to improve service delivery and achieve better outcomes for all children in the area.

In developing this Children & Young People's Plan, the CYPSC has taken account of the needs analysis and the consultation carried out across a wide range of services and groups, learning from previous interagency structures and also includes the professional experience and observations of frontline staff involved across the CYPSC Subgroups.

The CYPSC has had 3 facilitated planning meetings since its inception, including 1 session which included all subgroup members during which the strategic objectives and priorities were developed.

During 2014, a needs analysis and profile of services was undertaken by the CYPSC which set out to create a socio-demographic profile, a mapping of existing service delivery and an assessment of where further collaborative actions were required in order to improve the outcomes for children & young people. There were 206 responses to the survey of service providers and a number of focus groups and interviews were convened with 75 front line staff and Agency Managers in organisations providing services for children & young people.

In the period from September to November 2014, a number of consultations with children & young people were carried out:

### **Comhairle na nOg**

The Waterford Comhairle na nOg held an AGM in September which collated contributions from Young People for inclusion in both the CYPSC Children & Young People's Plan and the Local Economic Community Plan (LCDC). Members of CYPSC supported the work on the day, which saw 300 Young People attending from 16 of the 17 Secondary Schools and 53 youth clubs & organisations. These included representatives from DEIS Schools, Urban and Rural areas, the Gaeltacht, Youth Projects and Youthreach. The topics covered at the AGM consultation were Bullying, Mental Health, Substance Misuse, and Youth Facilities.

### **Hard to Reach Young People**

The Community Based Adolescent Subgroup was conscious that many vulnerable and at risk young people can experience barriers to becoming involved in representative structures such as Comhairle na nOg. Therefore the Subgroup initiated a consultation with these hard to reach young people using a group work approach in their own settings and facilitated by Project Workers using a template developed by the Subgroup. A total of 391 Young People between the ages of 13-21 years participated in the consultations including from the following target groups; early school leavers, young Travellers, LGBT Young People, Young Parents, Young People in Care and Young People with Disabilities.

### **Pre-school & Primary School Children**

The Education Subgroup co-ordinated the consultation with Pre-school and Primary School Children throughout the area. Using a template from the Tipperary CSC, qualitative surveys were carried out in 10 Primary Schools and 5 Pre-school/Afterschool Services. The surveys in the Preschools were undertaken by staff from the Childcare Committee and in the Primary schools by a 4<sup>th</sup> Year Student from Carlow IT on placement with CYPSC.

The schools selected were from across the area, both urban & rural, Deis & non Deis and both mixed and single sex schools. A total of 256 Primary pupils and 84 Pre-school children participated in the consultations.

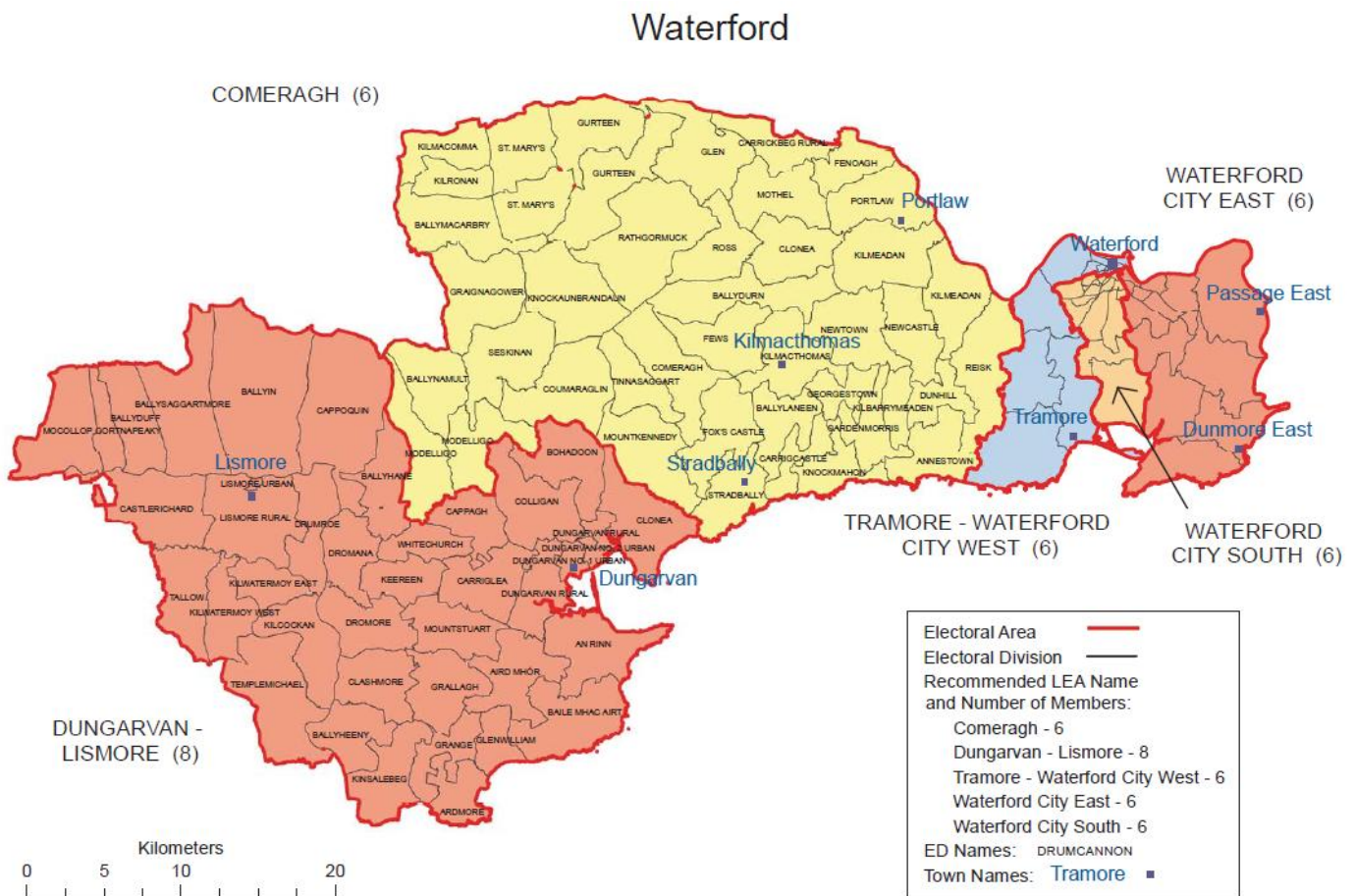
During November & December 2014 the Subgroups developed their priority actions and objectives using the CYPSC template over the course of a number of meetings in each case.

In January 2015, the CYPSC Committee held a facilitated planning session at which the combined Subgroup plans were considered against the 5 National Outcomes. At this meeting, the final priority actions were agreed and the potential for collaborative actions across the Subgroups was identified. Following this meeting, each of the Subgroups reviewed their plans against the CYPSC priority actions and the draft 3 Year Workplan was developed.

The Chairs of the Subgroups who are all members of the CYPSC formed an advisory committee to provide oversight and support in the development of the Workplan.

The Workplan was reviewed and signed off by the CYPSC during June 2015 and the plan was submitted to the Department of Children & Youth Affairs for consideration.

## Section 2: Socio-Demographic Profile of Waterford



Source: Waterford City & County Council

Waterford is located in the South East region of the Country in the province of Munster and ranks 20th in size covering an area of 1857 sq km. The total population of Waterford is 113,795 (Census 2011) making it the 20th most populated county in the state.

Following the publication of the Local Electoral Area Boundary Committee Report 2013, Waterford City and County areas were amalgamated under one Local Authority and the area was divided into 5 distinct Local Electoral Areas.

Waterford is now divided into five electoral areas illustrated on the map above:

- Waterford City East (pop 22,340)
- Waterford City South (pop 20,681)
- Tramore/Waterford City West (pop 22,907)
- Dungarvan Lismore (pop 28,490)
- Comeragh (pop 19,377)

The three local electoral areas within the hinterland area of Waterford City are combined to form a new 'Metropolitan District' i.e. Waterford City East, Waterford City South & Tramore/Waterford City West

Waterford City which is the 5th largest in the Country (pop 51,519) is located in the east of the county and together with Tramore now forms the new local authority area called Metropolitan district with a population of 65,928. This concentration of the population in the east of the county results in almost 58% of the population living within 15km of the City.

There are 3 main urban areas in Waterford - Waterford City - Tramore - Dungarvan.

Dungarvan town (pop 7,791) is located in the west of the County and is the main urban centre for a large rural hinterland. The remainder of the area is mainly rural, consisting of small towns & villages with populations of between 1,000 -2,000. This presents significant challenges in delivering services for children, young people & families outside of the main urban areas.

There are 28,908 children younger than 18 years and Waterford has a high young dependency ratio with 33% of the population under the age of 14. (21% State - CSO 2011). There are 6870 young people between the ages of 19-25years which at 3% of the population is significantly lower than the national average of 6.5% of the population.

<b>Waterford</b>	<b>State</b>			
<b>Population 2011</b>	<b>Total</b>	<b>Percentage</b>	<b>Total</b>	<b>Percentage</b>
<b>All ages</b>	<b>113,795</b>		<b>4,588,252</b>	
0-4 years	8,644	7.6%	356,329	7.8%
5 -9 years	8,134	7.1%	320,770	7.0%
10-14 years	7,802	6.9%	302,491	6.6%
15-19 years	7,076	6.2%	283,019	6.2%
20-24 years	6,870	3.0%	297,231	6.5%

#### **Facts from Census 2011 – Waterford**

- Marital Breakdown was at 10.4% compared to 9.7% nationally
- Non-Irish nationals made up 10.2% of Waterford's population compared to 12% nationally
- There is a labour force participation rate of 60%, with 53,514 in the labour force
- Of the 12 unemployment black spots in South East Region, 7 unemployment black spots are in Waterford City
- 18.6% have a third level qualification or higher, compared to an average of 24.6% for the State
- 16.5% have no formal or only primary level education
- The Pobal HP Index classifies Waterford City and Waterford County as 'Marginally Below Average' on the Relative Index Score

#### **Live Register 2015**

In September 2015, there were 9,390 signing on the Live Register in Waterford City and a further 1,684 in Dungarvan. These figures are down 3.8% on the same month in 2014. The figures for Waterford and the South East have decreased over the last number of months which is reflected in the downward trend in the national figures over the same period. However, while the South East has seen a 8.8% decrease in numbers on the live register in that period, Waterford City in particular has not fared as well, with only a 5.4% decrease in the numbers signing on the live register.

## Waterford : Key Facts & Figures for Children & Young People

Indicator & Source	Description	Waterford	% State
Total Population *CSO Census 2011	The total population of Waterford	<b>113,795</b> (+5.4%)	<b>4,588,252</b> + 8.2%
Child Population CSO	The number of children under 19 living in Waterford	<b>28,908</b> (+4.5%) 25% of total population	<b>1,148,687</b> 25%
Young People CSO	The number of young people aged 20-24	<b>6870</b> 3.0% of pop	<b>297,231</b> 6.5%
Youth Unemployment StatBank 2015	The number of young people under 25yrs signing on live register in Waterford City & County	<b>1,626 (July 2015)</b> -18% since July 2014	<b>20.6%</b>
Foreign National Children ** SONC 2012	The number of foreign national children living in Waterford	<b>2173</b> 7.7%	<b>93,005</b> 8.3%
Children living in Direct Provision HSE Social Inclusion Service	The number of children living in 3 Direct Provision Hostels in 2014	Children < 18yrs <b>83</b> Young People 18-25 yrs <b>29</b> Total pop. <b>286</b>	
Traveller Children SONC 2012	The number of Traveller children	<b>199</b> .7% (<1%) of child pop.	14,425 1.2%
Children with Disabilities SONC 2012	The number of children in Waterford living with a disability	<b>1,600</b> 5.5%	66,437 5.8%
New Births *** HSE Waterford	The number of children born to parents living in Waterford in 2014	<b>1811</b> (2014)	74,650 CSO
Children born to teenage mothers Squashy Couch ****	The number of children born to Mothers < 20 years living in Waterford in 2014	<b>19</b> – City (-62% since 2002) <b>21</b> – County	
Teenagers referred for counselling in 2014	No. of teenagers aged 14-19 referred to Counselling service – <b>Squashy Couch</b>  No. of teenagers aged 11-18 referred to counselling service – <b>St Brigids Family &amp; Community Centre</b>	<b>325</b>  <b>1717</b> counselling appointments  <b>90</b>	
Number of teenager referrals to SHIP HSE – SHIP	Number of referrals of teenagers aged 16-18 to SHIP (Self Harm Intervention Project) in 2014	<b>27</b> teenage referrals  <b>186</b> total referrals	



Children in lone parent households SONC	The number of children living in lone parent household in Waterford	<b>5744</b> 21% of total child population	
Housing Need Waterford City & County Council	Number of family units in need of social housing 2013 – Assessment of Housing Need	<b>551 -</b> lone parent family units <b>356 –</b> 2 or more adults family unit (with or without a child)	
Immunisations SONC	The % uptake rate of immunisations for 12 & 24month olds in Waterford	<b>95%</b>	<b>94%</b>
Breast Feeding SONC	% of mothers breastfeeding on hospital discharge	<b>58%</b>	<b>55%</b>
Number of referrals to Social Work	Number of referrals to Social Work Dept. re concern for child	<b>1080</b> (2014) (-36.5% since 2012)	
Children in Care	Number of children in the care of TUSLA	<b>276</b> (2014) TUSLA	<b>6160</b> (2011) SONC
Referrals to Garda Juvenile Diversion SONC 2012	Number of children in Waterford < 17 yrs referred to Juvenile Diversion Programme	<b>490</b> Highest % is between 15-17 yrs	<b>12,809</b> 3 times more boys than girls
Referrals to Young Peoples Probation Probation Services	Number of referrals in 2014 to Probation Services for young people between ages 14-22	<b>98</b> (increasing % show serious mental health, addiction & anger management issues)	% going to Circuit Court increasing annually
Le Cheile Mentoring & Youth Justice supports	Number of young people referred from court for mentoring	<b>7</b>	
Treatment for Substance Abuse HSE Substance Misuse Data Report 2013	Number of young people from Waterford treated for substance misuse 70% - Male 51% - alcohol misuse	< 18 yrs = <b>44</b> 18-24 yrs = <b>172</b> <u>Total pop. = <b>845</b></u>	
School Attendance Education Welfare Services Tusla	% of pupils who completed second level school in Waterford in 2012	<b>88.7%</b> - City <b>93%</b> - County	90.56%

\* CSO – Central Statistic Office – Census 2011

\*\* SONC – State of the Nations Children Ireland – Dept. of Children & Youth Affairs (2012)

\*\*\* HSE Waterford Community Care area includes part of South Kilkenny & omits the more sparsely populated area of North Co. Waterford

\*\*\*\* Squashy Couch is an adolescent health project in Waterford City originally developed by HSE & Crisis Pregnancy Agency (now Tusla) Number of teenage pregnancies in 2002 – City -50 / County - 26

## Children in Waterford

The total population of children aged 0-17 years in Waterford was 28,908 in 2011, which is an increase of 4.7% since 2006. The table also compares the age cohorts of 0-4, 5-12 and 13-17 years. This table reveals that children aged four and under accounted for 7.6% of the County's population. Children and young people aged 5-12 years comprised 11.3% and those aged 13-17 accounted for 6.5% for the total county population in 2011.

Population children by age group in Waterford & State

Age Group	Waterford Total	Waterford Proportion	State Proportion	Waterford proportion of total for 0-17 year
<b>0-4 years</b>	8,644	7.6%	7.8%	29.9%
<b>5-12 years</b>	12,828	11.3%	11%	44.5%
<b>13-17 years</b>	7,436	6.5%	6.3%	25.6%
<b>0-17</b>	28,908	25.4%	25%	100%

Source: Census 2011

These proportions show that Waterford's population of children mirrors that of the state, with 0-4s marginally lower than corresponding national measure at 7.8% and the proportion of the 5-12 and 13-17 age cohorts marginally higher than national measure at 11% and 6.3% respectively.

The map below reveals the proportion of children aged 0-17 years within each of the Electoral Divisions of Waterford, showing that most of the rural mid and west County area is close to average or above. The Waterford inner city area reveals the proportion of 0-17s is well below the County average. However, the suburbs of Waterford City, the areas around Tramore and the areas around Passage East and the Dunmore Road all reveal proportions of 0-17s above the County average. In addition, in the areas around Fenor, Portlaw, Kilmeaden, Dungarvan and Ardmore there are also higher proportions of children and young people than that seen for the County as a whole. There are particularly high relative proportions of 0-17s present in the Gracedieu and Kilbarry suburbs of Waterford City. Similarly, there are high proportions of 0-17s living near Dunmore, Ballymacarbry and An Rinn.

There are large concentrations of children and young people aged 0-17 in Dungarvan and suburbs and also the western and southern suburbs beyond Waterford City and Tramore. In the west of the county, there are relatively high concentrations of 0-17s in numerical terms evident, from east to west, in Kilmeaden, Portlaw, Kilmacthomas, Cappoquin, Lismore and suburbs and Tallow.

It is clear that a large proportion of Waterford's 0-17 year olds live in rural areas, given that the 0-17 population of the former City area is 10,950 (38% of pop) and the corresponding population for the former County Council area is 17,958 (62% of pop).

There are concentrations (relative to the county proportions) of ages 5-12 seen in the corridor from Waterford to Tramore, the Dunmore Road, Portlaw and in an arc from Ballymacarbry to the Waterford border with Carrick-on-Suir. It is noticeable that the southern suburbs of Waterford do not show proportions in this age cohort different to the County average.

In the case of young people aged between 13 and 17, there is again a concentration of this cohort in an arc from Ballymacarbry to the Waterford border with Carrick-on-Suir, an arc from the Waterford/Tramore road to Dunmore East, Kilmacthomas and finally, east of Lismore.

Between 2006 and 2011, Waterford's population of 0-17s increased by 4.3%, with some parts of the county experienced 'significant' increases in population. In the West of the County for instance, rural Ardmore, the suburbs of Dungarvan, Lismore and Cappoquin all recorded significant increases in the population of 0-17s.

In the Mid county, Kilmacthomas and Portlaw experienced a significant increase in the under 17s age cohort from 2006 to 2011. There was also a significant population increase in the environs of Annestown, Dunhill and Ballyduff. In the east of the County, there were similar population increases in the 0-17 age cohort seen in Tramore and suburbs, to the west of Dunmore East, the corridor from Waterford City to Tramore, Gracedieu, the southern/Dunmore Road suburbs of Waterford City and around Passage East

The Comeragh, Dungarvan-Lismore, and Waterford City East areas have proportions of 0-17s above the county average. Furthermore, this also shows that Waterford City and its western suburbs towards Tramore have a lower proportion of 0-17s than the county average.

The Comeragh area also contains a higher proportion of 0-4 years children than the national and county average. In terms of children aged 5-12, Comeragh, Dungarvan-Lismore and Waterford City East each exhibit higher proportions of children in this cohort than the corresponding national figure of 11%. In the 13-17 age cohort, that national measure seen in 2011 was 6.3%, three of the Waterford LEAs (Comeragh, Dungarvan-Lismore and Waterford City South) reveal proportions of young people in this cohort above the national average.

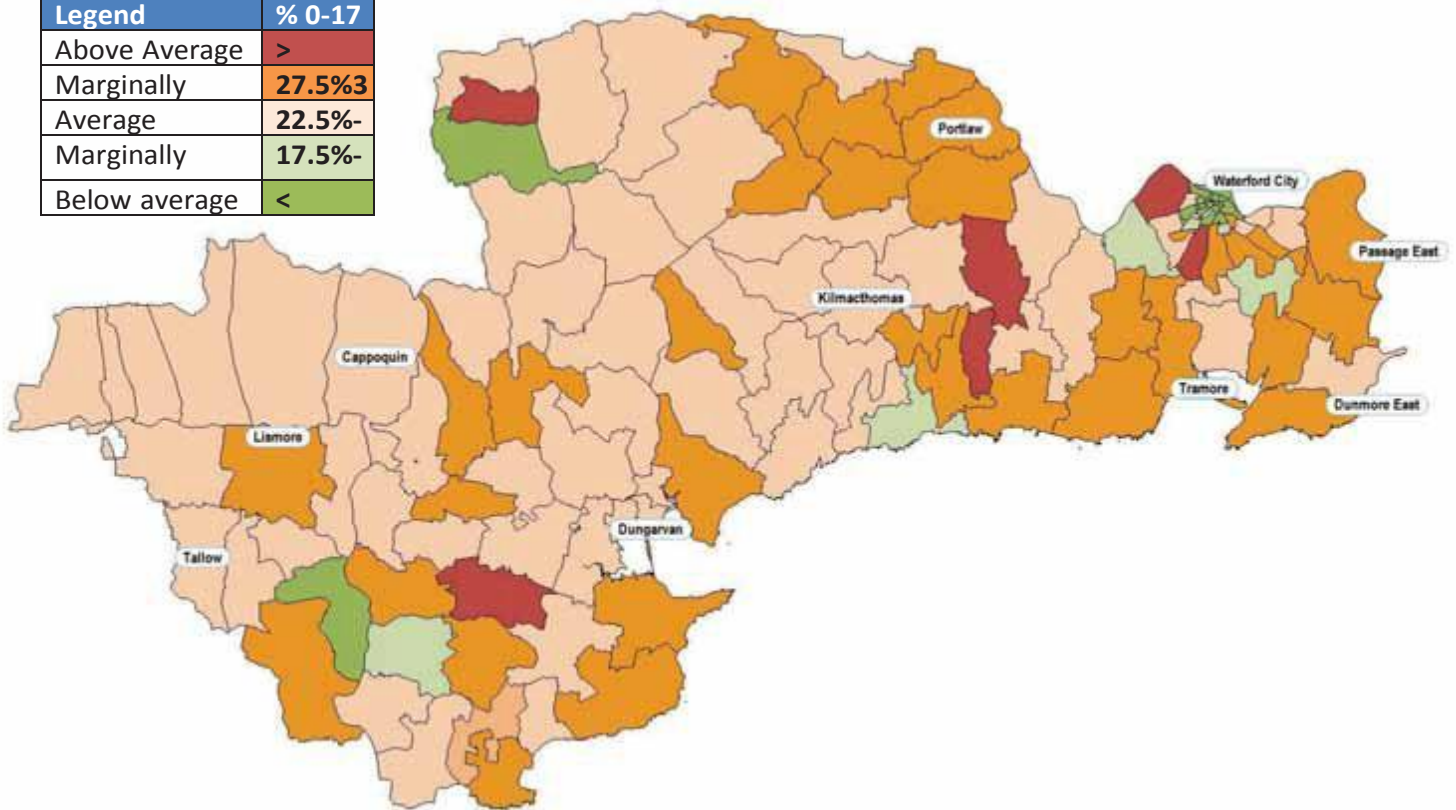
In tandem with the above, Comeragh, Dungarvan-Lismore and Waterford City East reveal proportions of their population aged 0-17 above the national average of 25%. These measures are set out for each cohort on the following maps. Overall, this suggests a slightly larger than the national average proportion of young people in some regions of Waterford at LEA level, moreover, it points to the location of higher proportions of young people in rural relative to urban areas.

**Population Proportions across three cohorts in Waterford areas (CSO 2011)**

	0-4 Yrs	%	5-12 yrs	%	13-17 yrs	%	Total Pop 0-	%
<b>Comeragh</b>	1763	8.2%	2610	12.1%	1489	6.9%	5862	27.3%
<b>Dungarvan-Lismore</b>	2043	7.7%	2960	11.2%	1738	6.6%	6741	25.6%
<b>Tramore-Waterford City West</b>	1671	7.3%	2478	10.8%	1370	6.0%	5519	24.1%
<b>Waterford City East</b>	1705	7.6%	2551	11.4%	1556	7.0%	5812	26.0%
<b>Waterford City South</b>	1462	7.1%	2229	10.8%	1283	6.2%	4974	24.1%
<b>Total for all Waterford</b>	-	7.8%	-	11%	-	6.3%	-	-

**Map of Electoral Divisions in Waterford showing their proportion of 0-17s relative to the County average of 25.4%**

Legend	% 0-17
Above Average	>
Marginally	27.5%3
Average	22.5%-
Marginally	17.5%-
Below average	<



## Youth Funding

At the time of writing, the findings of the VFM analysis of youth work funding streams undertaken by DCYA are emerging and the publication of the National Youth Strategy is awaited. This is a critical time for Waterford CYPSC to monitor developments and to engage in dialogue with key stakeholders in order to advocate and develop innovative youth service strategies which are inclusive, equitable, and participatory, deliver a quality response to the particular needs and interests of young people in Waterford, both City & County.

## Education

- Completion of upper-secondary level education across all Waterford Eds is significantly lower than the national average, i.e. national average 34% Waterford 19%.
- 58.2% of workers in jobs in Waterford City have only completed second level educational or less.
- International Adult Literacy Survey (1996, OECD) indicated that 1 in 4 Irish Adults have low literacy levels – using this as a benchmark it is estimated that some 7,000 Waterford citizens have literacy needs.
- Early School Leavers: Across Europe, leaving school early is associated with risks such as early pregnancy, increased illness and social exclusion. In Waterford in 2009/10, the average percentage of primary school children per school who are absent from school for 20 days was 11.8% which was higher than the national measure of 10.9%.
- Despite the considerable improvement at county level, there remain several EDs where significant numbers of the adult population have primary education only. These are Morrison's Avenue West (46.9%), Roanmore (42.7%), Larchville (42.5%), Lisduggan (40.7%) and Morrison's Road (38.0%).
- Also key electoral districts in the Comeragh Electoral Area require focused education promotion initiatives, i.e. Portlaw and Kilmacthomas.

## Deprivation scores

Deprivation in Ireland has been measured using the Pobal HP Index, since the 1991 Census.

The relative index score for Waterford overall changed from -3.06 to -2.49 from 2006 to 2011.

The deprivation index is relative in the manner by which it takes into consideration the relationship between areas in terms of the indicators of deprivation. This means that while the overall affluence of the Country may have decreased in recent years, areas that are more affluent then remain affluent today relative to more disadvantaged areas; both types of areas have regressed in recent years.

In 2011 there were 3 Electoral Area with a very disadvantaged status:

- Lisduggan & Larchville - City
- Dungarvan

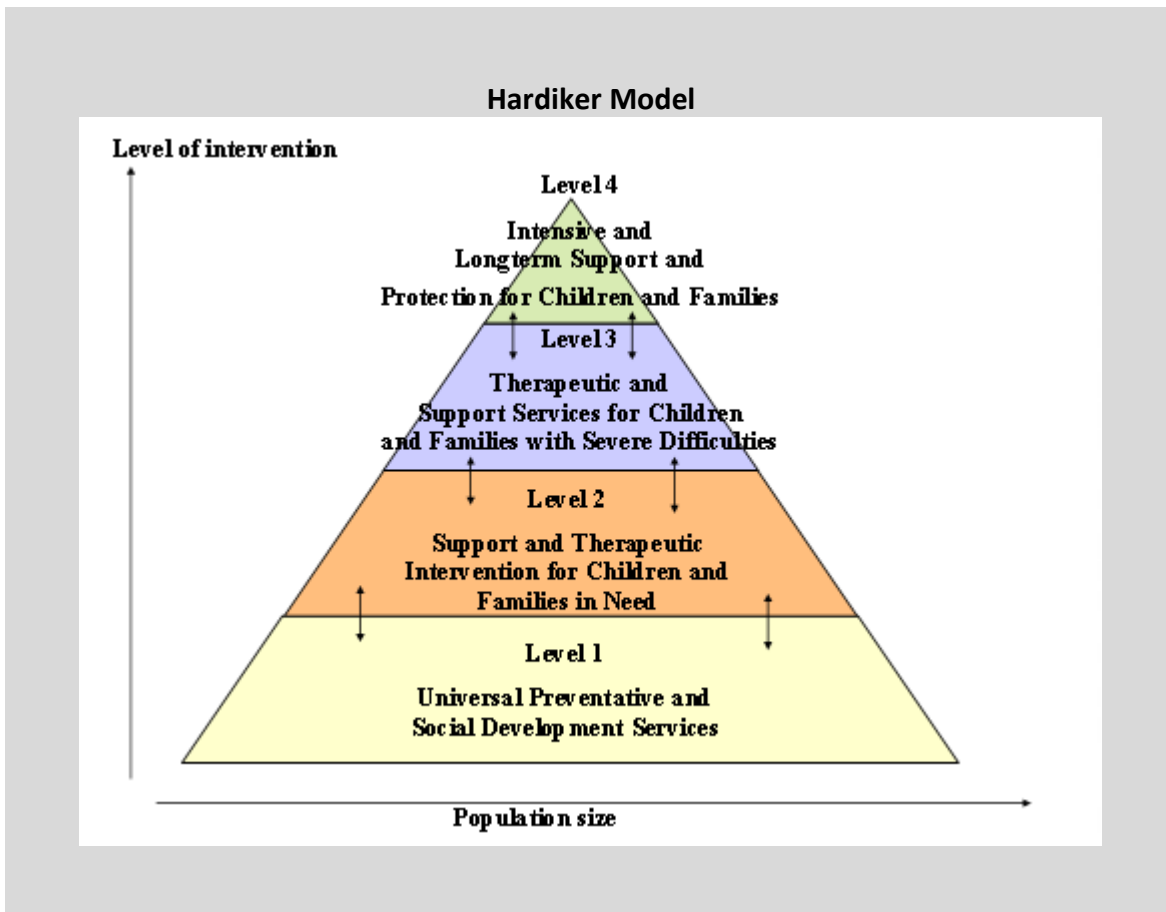
There are 18 Electoral Areas in the area with a disadvantaged status in the 2011.

Table below presents the HP Pobal Deprivation Index at the Small Area level that is below that of the ED.

### Deprivation and Disadvantage in Waterford Sub-region's relevant EDs and SAs

Sub Region Title	EDs Comprising Sub Region	ED Deprivation Status 2011	No. of Disadvantaged Small Areas	No. of VERY Disadvantaged Small Areas
<u>Waterford City East</u>	Grange South	Marginally Below Average	1	2
<u>Waterford City South</u>  Electoral Areas – 17 Very Disadvantage – 2 Disadvantaged – 7  Small Areas – 70 Very disadvantage – 14 Disadvantaged – 39	Ballybeg North	Disadvantaged	4	3
	Ballytruckle	Disadvantaged	8	1
	Custom House A	Disadvantaged	1	1
	Grange Upper	Marginally Above Average	1	
	Kingsmeadow	Disadvantaged	5	2
	Larchville	Very Disadvantaged	0	4
	Lisduggan	Very Disadvantaged	2	3
	Mount Sion	Disadvantaged	4	
	Poleberry	Marginally Below Average	3	
	Roanmore	Disadvantaged	3	
	Slievekeale	Disadvantaged	3	
	Ticor North	Marginally Below Average	1	
	Ticor South	Disadvantaged	2	
Grange North	Disadvantaged	4		
<u>Tramore-Waterford City West</u>  Electoral Areas – 19 Disadvantaged – 9  Small Areas – 108 Disadvantaged - 27	Tramore	Marginally Below Average	3	
	Centre A	Marginally Below Average	1	
	Ballybricken West	Disadvantaged	1	
	Centre B	Disadvantaged	1	
	Cleaboy	Marginally Below Average	1	
	Military Road	Disadvantaged	4	
	Morrison's Avenue East	Disadvantaged	3	
	Morrison's Avenue West	Disadvantaged	1	
	Morrison's Road	Disadvantaged	3	
	Newport's Square	Disadvantaged	3	
	Shortcourse	Disadvantaged	2	
	Ferrybank	Disadvantaged	3	
The Glen	Marginally Below Average	1		
<u>Comeragh</u>  Electoral Areas – 41 Disadvantaged – 2  Small Areas – 74 Disadvantaged - 7	Comeragh	Disadvantaged	1	
	Kilmachthomas	Disadvantaged	3	
	Portlaw	Marginally Below Average	2	
	Kilmeaden	Marginally Below Average	1	
<u>Dungarvan-Lismore</u>  Electoral Areas – 39 Disadvantaged - 1  Small Areas – 24 Very Disadvantage – 1 Disadvantaged – 11	Ballyheeney	Marginally Below Average	1	
	Cappoquin	Marginally Below Average	1	
	Dungarvan No 1 Urban	Disadvantaged	6	1
	Dungarvan No 2 Urban	Marginally Above Average	3	
	Tallow	Marginally Below Average	1	
	Lismore Urban	Marginally Below Average	1	

## Section 3: Overview of Services to Children and Families in Waterford



In order to develop an overview of the services available to children & families, the Waterford CYPSC completed a profile of services and a needs analysis in 2014. The aim of this work was to map the services provided by statutory, community and voluntary sector organisations throughout the area and also to identify and analyse the gaps in services and service delivery for children & families. The survey & profile was conducted prior to the changes announced by the Dept. of Children & Youth Affairs increasing the age range for CYPSC to coordinate service delivery for children & young people from ages 0-24 in line with the “Better Outcomes, Brighter Futures” Policy. Therefore, while the current research deals with ages 0-18, Waterford CYPSC has identified the need to conduct further analysis into the needs of 18-24 year olds over the course of the action plan.

During 2014, a survey was carried out among those services providing supports for families & children which received 387 responses from 204 service providers. The majority of respondents (60%) were from the community & voluntary sector, 26% were statutory service and the remainder were private (mainly childcare providers).

The survey identified 14 categories that broadly serve to differentiate service types and their general relationship to the Hardiker model. The findings reveal that the majority of children’s services (those responding to the survey) can be categorised as Level 1 under the Hardiker Schema. This is a key finding and suggests that



most services for children, those catering for the largest numbers of children are community based level 1 - universal services. This is to be expected as the majority of children are catered for in universal services such as preschools and schools and is also shows that it is important to support and enhance universal services in their preventative role and also as the first point of contact in identifying those children who require more targeted supports.

The table below outlines these broad categories

Type of Service Provided	%	Hardiker Level
Preschool/childcare	<b>33%</b>	1
Targeted youth work interventions	<b>14%</b>	2-3
Mainstream education	<b>13%</b>	1
Universal youth work	<b>11%</b>	1
Sports	<b>6%</b>	1
Targeted education interventions	<b>6%</b>	2
Health	<b>4%</b>	1-2
Therapeutic support	<b>4%</b>	2
Community development	<b>3%</b>	1-2
Family support	<b>3%</b>	2-3
Arts, drama and culture	<b>1%</b>	1
Crisis interventions	<b>1%</b>	4
Local authorities	<b>1%</b>	1
Social work	<b>1%</b>	3-4

Beyond provision to children, the survey established that 74 or 36% of, services who responded provide services to families as well or in tandem with provision for children. Of this number, 18.3% of the services provided to families are characterised broadly as parenting. The next highest proportion of services to families with children is around family support (16.1%). Following this, referral and information is cited as the service provided to families by 14.1% of services. These three services account for just half of those provided to families. The remainder of the services types provided are activities and classes, advice and guidance, therapeutic services, networks and groups supports, finance and resource supports and health.

In terms of **catchment area** at the LEA level, 22% cite Waterford City South, Dungarvan-Lismore 19%, Tramore-Waterford City West 15%, Waterford City East 15%, and Comeragh 12%. Over 10% of services cover all of Waterford.

Overall, this suggests that there is relatively wide coverage of universal services at the LEA level, however most targeted services tend to be located in the Waterford City area and to a lesser extent in Dungarvan with few provided in the rural areas in between.

**Age cohorts** of children and young people served revealed that more than half of services responding to the survey provide services to more than one cohort of children. The highest proportion of services at 53.4% provide for children aged 5-12. In terms of the other age cohort: 0-4 years provide to by 47.5% of services and, 5-12 years by 41.2%.

Approximately, 50% more services than just preschool services provide for the 0-4 year cohort. This includes those who provide more holistic services to families which include provision for childcare.

41% of responding organisations provide services to children and young people aged 13 to 17. This group includes schools, sports clubs, youth activities and generic services for under 18s in health and other services.

Just over one quarter, 26% of services stated that they included family members and children in their work. This reflects where services formally provide such services as opposed to the more informal provision of advice.

Seven out of ten services responding to the survey had more than one source of funding. Just 29% of services received their funding from just one source. The most cited source of funding, 23.4% was a statutory source. The issue of reduced funding and contraction of services was a particular concern for all service providers. It was pointed out that many services had to reduce the pay & conditions of staff in order to maintain services and for many community & voluntary organisations the fact that the entire core funding is spent on staffing means that there is little available for programmes, projects, outreach, training or innovation. Overall there was a sense that many services felt they had less capacity to respond to the presenting needs at a time when needs of families & children have increased.

The survey also showed that 51.5% of services surveyed do not have a planned, formal relationship with other providers of services to children in Waterford. While a significant 48.5% do have such a relationship, the proportion that do not is a concern at one level but also reflects a degree of uncertainty on how to name existing relationships and arguably the lack of a structured collaboration between many services. This suggests more focus is required on collaborative working in keeping with the aims of the CSC and national policy objectives.

## Overview of services

The list of services below provides an overview of the main service providers working with Children, Young People & Families in the Waterford area and the level of service provision on the Hardiker model.

Organisation/Agency	Service	Statutory or Voluntary	Universal or Targeted or both	Hardiker Level
HSE Community Services & Primary Care Teams 14 PCT in Waterford	PHN, GP, Occupational Therapy Physiotherapy Speech & Language Therapy Child Psychology Early Intervention Team (Disability) Audiology, Immunisations, Dental service, Ophthalmology Health Promotion	Statutory	Universal & Targeted	1 - 3
HSE Mental Health	CAMHS Child & Adolescent Mental Health Services  SHIP (aged 16 +) Self Harm Intervention Programme	Statutory  statutory	Targeted  targeted	3 -4  3
HSE Substance Misuse	Treatment clinics Counselling Community Outreach x 3 CBDI x 5	Statutory  (also funds Voluntary orgs)	targeted	2-4
HSE Social Inclusion	Homeless services Traveller Health Projects x2 Intercultural Health Project	Statutory  (also funds Voluntary orgs)	Universal & targeted	1 - 3
Tusla – Child & Family Agency	<b><u>Social Work</u></b> Child Protection Fostering & Alternative Care Aftercare services	Statutory	Targeted	3-4
	<b><u>Family Support</u></b> PPFS Child & Family Networks	Statutory	Universal & Targeted	1-3
	<b><u>Adolescent Health Project</u></b> Squashy Couch (Teenage Health & Counselling)	Statutory	Universal & Targeted	1-3
	<b><u>Preschool Inspection</u></b>	Statutory	Universal	

Family Resource Centres (FRC) x 2	St. Brigids Family & Community Project, City Sacred Heart FRC, City	Community	Universal & targeted	1-3
Family Support Services	Springboard – Barnardos Dungarvan - Barnardos ISPCC	Voluntary	Universal & Targeted	2-3
Services to support Youth Mental Health	Psychology CAMHS Squashy Couch NEPS SHIP Suicide Resource Office School Guidance Teachers Counselling – St. Brigids Youth Services	Statutory Statutory Statutory Statutory Statutory Statutory Community Voluntary	Targeted	2-4  2-3
Policing & Justice	Gardai Community Garda / JLO Garda Youth Diversion Projects x 5 Probation Services TREQ Youth Offenders Project Le Cheile Restorative Practice Network	Statutory Statutory Community Statutory Community Voluntary Community/ Interagency	Targeted	2-3
Education	Primary – 76 (Deis - 11) Secondary – 18 (Deis - 5)  Special Schools - 3  National Education Psychology Service (NEPS)  College of Further Education  Waterford Institute of Technology  Education Welfare Service  Waterford /Wexford ETB  School Completion Project x 3  Youthreach x 3  Teen Mothers Project  Ballybeg Community Education Project  XLC Project	Statutory Statutory  Statutory  Statutory  Statutory  Community/Vol  Statutory  Voluntary  Community  Community	Universal Universal  Targeted  Targeted  Targeted  Targeted  Universal & Targeted  Targeted  Targeted  Targeted	1 1 1-2  2-3  2-3  1 2-3 2 2-3 2-3 2

Youth Services	<u>Waterford and Sth Tipperary Community Youth Service</u> Youth Projects x 14 Community Based Drugs Initiative 5 Garda Youth Diversion Project x 5 Drugs Outreach Project x 2 Volunteer led Youth led clubs x 11 <u>Foroige</u> Youth projects x 3  Volunteer led youth clubs (mainly rural clubs)  <u>Other Youth Projects</u> There are a number of smaller Youth Projects x 4	Community & Voluntary	Universal & targeted	1-3
Early Childcare services	Childcare Committee  100 Childcare Providers (total) 44 Community services  89 services offer ECCE 38 services offer CETS 21 services offer Subvention  32 parent & toddler groups	Community & Private	Universal	1
Local Authority	Housing Libraries x 11 branches Parks Playgrounds x 22 Skateparks x 2 National Recreation Week National Play Day / National Bike Week Walk to School Week Community Liaison Dept Sports Partnership (Youth Sports Development) Sports Centres x 2 Municipal Golf Course Rural Transport (Schools Travel Planning) Comhairle na nÓg Healthy Waterford (WHO Healthy City Project)	Statutory	Universal & targeted	1-2
Domestic & Gender Based Violence	Oasis House Refuge  Waterford Rape & Sexual Assault Centre	Voluntary	Targeted	2-3
Social Housing	Respond Focus Ireland Cluid	Voluntary	Universal & targeted	1-2
Drugs & Alcohol	Regional Drugs Task Force HSE Substance Misuse CBDI x 5 Drugs Outreach projects SE Regional Family Support	Statutory & Community	Targeted	2-4

Migrants	ISU – Integration Support Unit	Voluntary	Universal	1-2
Travellers	Traveller CDP Traveller Health Project x 2 Subla Education Project	Community	Universal	1
Others	Waterford Area Partnership (SICAP) Waterford Leader Partnership (LEADER) Waterford Women’s Centre Men’s Development Network MABS – Money Advice & Budgeting Service	Community Community Statutory	Universal	1 1-2 1

## Section 4: Local Needs Analysis in Waterford

In the development of the local needs analysis, the CYPSC undertook extensive research in the area using the following methodologies: secondary research, primary research through a survey of services, focus groups and interviews with service providers & frontline staff and consultations with children & young people. It is notable that there that there was a high level of consistency in the issues, gaps and needs identified in this research. Overall there was a marked coherence across the board which suggests that the research has identified key issues of consensus in respect of children's services in Waterford.

The prominent themes emerging from the needs analysis were as follows;

- Mental Health supports
- Service Provision in Rural areas
- Early Intervention & Prevention
- Listening to Children & Young People
- Strengthening Interagency collaboration
- Restorative Practice approach

The following is a summary of the key findings based on the five national outcomes for children and young people:

### **Outcome 1- Active and healthy, physical and mental well being**

The key areas of need are identified as follows –

- Child & Youth Mental Health
- Adolescent Health Services in Rural areas
- Healthy Activities & lifestyles
- Drugs & Alcohol

#### **Child & Youth Mental Health**

The issue of supports for the emotional well-being of children & young people and the early assessment & support for those with emerging mental health difficulties was a key concern throughout the research. There is a lack of awareness of available services and referral pathways for those services by both families and professionals and there appears to be a limited approach to collaborative working between the statutory and community / voluntary organisations at the frontline of children & young people's services. Many of those services outlined how they are seeing increasing numbers of children and young people presenting with emotional and early stage mental health difficulties, anxiety, substance misuse as a result of emotional problems, bullying and suicide ideation. There are often waiting lists for assessments & treatment and in the interim waiting period there are few supports available to parents and young people especially in the west of the County.

The gaps in services are also seen in terms of early supports or interventions, prevention and resilience building supports, the capacity of universal services to deal with children & young people experiencing emotional difficulties,

and the availability of individual, group- based and family based therapies and interventions. Counselling provision for young people with a focus in particular on those under age 14 was also cited as a need and gap.

It was noted that there is a marked disparity in the investment and delivery of Mental Health services for adults compared with that for under 18 year olds. In particular, the need to improve Mental Health service provision for 16-18 year olds was highlighted, which mirrors that issue identified in the Better Outcomes Brighter Futures document at National policy level. While this is an issue for decision makers at national level, there is potential to improve how service providers at local level can work more collaboratively to streamline the delivery of services locally.

Many of the responses in the focus groups/interviews pointed to the detrimental effects of unemployment and in particular long-term unemployment on the fabric of some communities. This impacts much further however, on the family and in many cases directly on the wellbeing of members of families, both adults and children & young people. Thus, the relationship between joblessness and the rise in mental health difficulties was seen as a key issue in many communities, particularly those most disadvantaged.

### **Adolescent Health Service**

The Adolescent Health Service (Squashy Couch) provides health services for 14-19 year olds in Waterford City and while it is available to those who can travel from rural areas, there is no outreach service currently available. The centre provides Nursing & GP services, teenage counselling, sex education programmes & Youth Café and also provides clinic rooms for other services such as Substance Misuse & SHIP (Self Harm Intervention Programme) to meet teenage clients in an appropriate setting. The lack of an Adolescent Health Service outside of the City was seen a key gap throughout much of the needs analysis by a wide range of services but especially by young people themselves. It was identified as the one obvious service which many felt should be available to teenagers in the West of the County in particular.

### **Healthy Activities & Lifestyles**

The need for community facilities was identified, which could provide shared space for delivering local services and also provide opportunities for healthy activities for children & young people not involved in mainstream sports. The lack of facilities for young people especially younger teenagers in large parts of the area was identified in the consultations with young people themselves as a gap which had the potential to foster unhealthy activities and anti-social behaviour, especially if they lacked the financial resources to afford costly hobbies or to travel distances to organised events.

The need to foster improved linkages between health services and frontline staff & volunteers working with children & young people was also identified, in order to ensure that they have positive health influences and opportunities for healthy options. Many service providers want to improve their capacity to bring positive health messages into their everyday interactions with children, young people & families, especially in terms of proactively dealing with issues such as positive mental health, positive body image for both boys & girls, healthy eating and the issue of obesity which has been identified nationally and reported anecdotally from local front line staff.



## **Drugs & Alcohol**

Concern was expressed throughout the area about the use of drugs and alcohol by young people and in particular the capacity of services to deal with increasingly complex issues arising for families and young people. The need for continued collaborative work among those agencies dealing with substance misuse was highlighted along with the need to recognise the potential role of other service providers in the wider family support sector, given the impacts of substance misuse on other family members. The impact of parental substance misuse in terms of “hidden harm” has been well documented however a significant issue identified was the impact of substance misuse by a young person on their family, particularly in terms of aggression and domestic violence in the family home. A specific need was identified for supports for parents, especially lone mothers in dealing with aggression from adolescent children exacerbated by substance misuse.

## **Outcome 2 - Achieving full potential in learning and development**

The key areas of need are identified as follows –

- Attendance, participation and retention of children and young people in school
- Effective supports for children and young people at educational transition points in their lives
- Supports for early school leavers including those under 16yrs
- Early Childhood Development -children under 5yrs and their families to improve school readiness

The research shows that of the 24,500 children under 14yrs living in Waterford, almost 15,000 of these live in the most disadvantaged areas of Waterford City South, Dungarvan and Lismore and the Comeragh electoral areas. In the general population, only 19% has completed upper secondary level education which is significantly lower than the national average of 34%. Up to a fifth of the total population in these areas has no formal education or has primary school education only.

## **Attendance, Participation & Retention**

It is well documented that low educational attainment and educational inequality are recorded as key factors in social exclusion and a greater risk of long term unemployment, therefore there is a need to ensure that supports are available at earlier stages for vulnerable children & young people both at school level and through coordinated approaches from other agencies. The reduction and removal of school based supports and services such as the Guidance Teachers and the supports for specific at risk students such as Traveller & Roma Children, English Language supports for Migrant Children and cut backs in School Completion Projects has had a significant impact on the capacity of schools to deal adequately with those children with additional needs.

The Department of Education and Skills provides educational supports to individuals through its DEIS Programme (Delivering Equality of Opportunity in Schools). 8 primary schools and 4 post-primary schools in the City and 2 primary and 2 secondary schools in the County have DEIS status, between them these schools target 2,393 students. However, there are many students in non-DEIS schools in need of additional supports and at risk of early school

leaving and there is concern that ongoing participation and retention of some young people is a challenge without additional supports especially in rural areas where alternative education options are often not available.

Schools are required to officially inform the Education Welfare Service of any children under age 16 who leave school early, however anyone who leaves school between the ages 16-18 can remain hidden to the system and services. While many in this age group will attend alternative education such as Youthreach, there are a number each year that will remain at home and according to services working with young people many of these are at risk of compulsive internet gaming, mental health issues & substance misuse, and a source of tensions in the family home.

This cohort of young people are a particular challenge to support services due to a lack of data and tracking systems and require a collaborative response in supporting both the young person and the parents & family.

There is a need to promote the positive message of the many alternative pathways to educational attainment – leaving school doesn't mean leaving education – and there was a general concern that the label of being an “early school leaver” can be a negative barrier to employment prospects at later stages for young people.

The School Completion Projects have developed targeted Access programmes for schools and for Waterford Institute of Technology (WIT), which provide supports to vulnerable young people who may not have considered remaining in education. These programmes are currently mostly available to students in the City and there is a need to support the roll out of similar programmes and supports to schools and students in the rural areas of the County also.

## **Transitions**

There is evidence to show that vulnerable and at risk young people are more likely to face difficulties at transition points in their lives and also at particular transition stages in education, such as pre-school to primary school, primary to secondary school and between junior & senior cycles in secondary school. Strengthening Transitions is one of the six transformational goals set out in ‘Better Outcomes, Brighter Futures’ and while there is evidence of some very good examples of transition programmes in areas with School Completion Projects and Community Youth Projects, it is not widespread throughout all areas and schools. There is a need to establish the current level of transition programmes at various life stages currently in use throughout the area and to develop a model of good practice. There is potential to promote and support increased linkages between schools and community organisations and to transfer information and best practice advice between schools in different areas in order to ensure that all children benefit from supports irrespective of where they live.

The Childcare Committee is involved in developing transition programmes with pre-school children in ECCE preschools before they enter Primary School and there is a need to ensure that this programme is adopted across all preschools and primary schools throughout the area.

## **Early Childhood Development – Children under 5yrs**

The early years of a child's life is a critical time in their development, however there are some parents who experience certain circumstances which affect their capacity to ensure the best outcome for their children. The Public Health Nurses (PHN) are the frontline service in providing universal services to the 0-5years, however a lack of uptake of other support services was particularly noted among those from the experiencing isolation and those from particular target groups such as Travellers, Roma Children and those living in Direct Provision. In the rural areas, the issue of isolation for mothers of young children from Eastern Europe in particular was identified.

There is a need for more projects which support school readiness such as inclusive & targeted Mother & Toddler groups, parenting supports such as community mothers type supports and family literacy schemes such as books for babies. These types of projects can form the basis of family support services and can provide opportunities for isolated mothers of young children to meet others and receive appropriate supports. Such programmes can also be an important factor in promoting the importance of preschool in preparing children for school and encourage more hard to reach groups to avail of the free preschool year (ECCE).

## **Outcome 3- Safe and protected from harm**

The key areas of need identified as follows –

- Early intervention and family support
- Parenting & Community based supports
- Restorative practice
- Cyberbullying & Internet Safety

### **Early Intervention & Family Support**

Early intervention and prevention is one of the six key transformational goals outlined in 'Better Outcomes, Brighter Futures' and can stop the escalation of difficulties, which would otherwise develop and perhaps require more intensive supports. Promoting early interventions and prevention is one of central pillars in the work of Tusla through the development of the LAP/Meitheal and Child & Family Support Networks.

The research highlighted that early intervention & prevention is seen by service providers as a key issue; however there is a need to offer providers of universal services additional supports to assist them to respond appropriately at an early stage and to ensure they have adequate knowledge and information to support children & families. The research identified concerns from universal services regarding the appropriate understanding and response to behavioural and emotional problems, difficulties in the family and mental well-being issues.

## **Prevention and Early Intervention**

Prevention and Early Intervention approaches proactively provide evidence-based, outcomes-focused supports to children, young people and families as early as possible in their lives. Core practice areas include: early attachment and bonding; social and emotional development from infancy and throughout childhood and adolescence; literacy and language development; mental health; crime and violence prevention; youth mentoring; and parenting support. Intervening early has been shown to help children become more resilient, and more likely to realise their rights and full potential. It can have lifelong effects on outcomes such as better physical and mental health, improved educational outcomes and improved employment prospects. There is also evidence that intervening early can be both more effective and less expensive than intervening later, preventing negative outcomes for children, young people, families and communities. Waterford CYPSC recognises the integral part which early intervention and prevention plays in the overall remit and purpose of this plan.

## **Parenting Supports & Community Based Supports**

Parenting is clearly an important part of the development, happiness and welfare of children and set down as one of the six transformation goals in the “Better Outcomes – Brighter Futures” policy framework. The research found that parenting and broader family support is considered a key process and need in the development of children’s services in Waterford. However, there are varying levels of support for parents and families available, particularly in rural areas and no single information source for anyone interested in accessing parenting supports throughout the area. In addition, there is a lack of coordination or overview of the parent supports and programmes across the city and county both in terms of ensuring that all target groups & ages are catered for and in the practical scheduling of timetables and information in a calendar of events. It was noted that there is a need for more targeted parenting supports to be made available to parents experiencing specific circumstances, such as parents of children with disabilities, parents living in Direct Provision, parents from the Traveller & Roma Communities, parents going through acrimonious separations and specific supports for parents experiencing domestic violence from their adolescent children living at home.

## **Services for children & young people with additional needs**

There was a lack of integrated services provision for children with special needs and support requirements, in particular children with physical and intellectual disabilities and children from migrant communities including asylum seekers, refugees, new communities and Roma children. In order to promote integration, there is a need for translation services, cultural awareness and access to a diverse range of community based services which provide practical, esteem, emotional, information and advice support to be provided. This in turn requires both additional human and financial resourcing. Questions were raised about the lack of provision at the universal level for such groups of children and the integration of services for these children with mainstream services for all children. The key point made here was that regardless of circumstances, national policy or background, children with disabilities and children from ethnic minority groupings were first and foremost children. Particular concern was raised regarding the conditions and level of services for children & families living in direct provision centres.

## **Restorative Practice**

The CYPSC acknowledges the importance and the benefit of a community and county perspective to supporting and encouraging the embedding of Restorative Practice (RP). Restorative Practice is a way of working with people that is based on the philosophy that when people are given ownership and responsibility for their actions, there is a greater likelihood of positive, long-term interaction with other people, the development of empathy with others and the establishment of healthy and productive families & communities. It has been recognised as a strategy and model underpinning Articles 12 & 19 under the *UN Convention on the Rights of the Child*. The fundamental premise of R.P. is that when relationships between people have been harmed, those involved in repairing that harm are happier, more cooperative and more likely to make long-term, positive changes within that relationship, when things are done *by and with* them, rather than *to* or *for* them. This approach works well in the delivery of supports to children and families and it can also enhance professional service delivery. The support proffered by the CYPSC enables the RP Network to provide a comprehensive training programme to a range of professions and disciplines across the area. This will also be linked to the roll out of Meitheal which will ensure the embedding of RP within the four Child and Family Networks across City & County. It is envisaged that the RP Network and LAP Steering Group will develop additional modules which can be included in the respective training programmes for both RP & Meitheal.

## **Bullying, Cyberbullying & Internet Safety**

During the consultations with children & young people, the issues of bullying, cyber bullying and internet safety were identified by them as having a significant impact on their lives. The need for more accessible information for young people, parents and schools was seen as key in dealing with the issues. The need for more supports to build resilience in young people was highlighted as well as the need to work with young people in developing solutions at local level. The Waterford Comhairle na nOg has developed resources on cyber bullying and internet safety which could be the basis for developing an area wide action plan on cyber bullying across all agencies, organisations and schools.

## **Outcome 4 - Economic security and opportunity**

The key areas of need are identified as follows –

- 18-25yrs NEETS – Not in employment, education or training

### **Economic disadvantage and social exclusion**

The effect of changes in the economy and the impact of the current recession is noted in the long-term cycle of disadvantage in some locations and within families. The negative effect of poverty on the health, well-being, prospects, risky behaviour, social/psychological development and opportunities have been clearly made in research for decades and these were also cited in the responses. The findings show that children are often exposed to negative family, peer and community role modelling. This is in part viewed as a symptom of the social, economic and relationship difficulties brought on by the current recession but also the lack of resilience building supports and programmes on the ground. The rate of unemployment for Waterford City and County was 25% compared to a national average of 19% in 2011.

Of particular concern is the youth unemployment rate of 41% for age 18 – 24 year olds, however, in some disadvantaged areas the rate of unemployment for young people under age 25 can be as high as 58%. (SICAP 2014). While unemployment rates in 2015 have been decreasing, the rate of decrease in Waterford City in particular, is lower than that seen at regional & national levels.

### **18-25 years not in education employment or training**

There is a lack of information currently available regarding the specific needs of the 18-25 year age cohort generally and the CYPSC will address this gap in the course of the action plan. The population of 20-24 year olds in Waterford is 6870 (3%) which compares to 6.5% nationally and there is a need to establish why there is such a disparity and how best to ensure the best outcomes for those young people living in the area.

The new SICAP programme has a specific focus on the needs of those young people not in education, employment or training and the CYPSC will work closely with Waterford Area Partnership to ensure that a coordinated approach is developed.

## **Outcome 5- Connected, respected and contributing to their world**

The key areas of need are identified as follows –

- Service delivery in rural areas – shared hubs
- Participation by Children & Young People

### **Rural Waterford**

The unique needs of rural Waterford, Mid and West County in particular, were highlighted throughout the findings with a strong consensus that the provision of services was higher in urban relative to rural areas. The research found that using the former County and City boundaries, 61% of children and young people aged 0 to 19 live in the former County Council area of Waterford accounting for 19,459 persons, however it is the case that youth work funding in rural Waterford is a fraction of that seen in the City and is one the lowest per capita of young person seen nationally.

Rural isolation is seen as a particular issue for children and young families, especially single parent families and those experiencing additional needs.

It was noted here that targeted or specialist services were located for the main part in urban centres with the majority of these seen in Waterford City. Lack of access, the affordability of transport and the quality of service provision for children were all cited as related issues in this context. In addition, it was suggested that an onus is often placed on children and families to access services rather than service provision being on an outreach basis.

The provision of services in rural areas requires an alternative model of provision to that seen in urban areas. The existing service provision model tends to follow population centres and in rural areas tends to be in the larger towns. This however can cause difficulty for families in the context of the lack of affordable transport to services and the limited ability of services to offer outreach type activity due in part to resource restrictions.

There is a need for more joined-up thinking in the delivery of services in rural areas by outreach and co-location of services by agencies and organisations in rural hubs which are supported by Child & Family Networks. These hubs can provide venues for the delivery of mainstream support services but will also facilitate the development of local community responses to local needs. Overall, there is a need to develop a rural provision strategy for children's services in Waterford, using best practice models in Rural Family Support and Youth Work services and which builds on community development principles and recognition & support for existing universal services.

The issue of affordable transport initiatives to enable improved access to supports and in particular, to acute services in urban areas was prevalent in the west of the County.

### **Community Development**

The lack of community-based organisations across both City and County was identified as an issue in respect of the identification of and provision of supports for individuals and families at community level. There are very few community development type organisations across the county, with a particular absence seen in rural areas.

There are only 2 Family Resource Centres in the whole area and both are in the City. The research suggested that community development was a key need in terms of children's and family services as it would enable development of community based supports and interventions locally and be a catalyst for encouraging community leaders and volunteers. This issue underlines the importance of animating a community response to services gaps and the development of an advocacy process to respond to such deficiencies. Examples of community-based services/initiatives include community mother's programmes, community based family support, community and family resource organisations and the development of community 'leaders' or 'champions'.

### **Participation by Children & Young People**

During the course of the development of this plan, the CYPSC consulted with over 1,000 children & young people throughout the area in a variety of settings. It was clear that all of the children and young people had very valuable contributions to bring to the plan and even very young children were able to voice their opinions on what is important to them. While they appreciated the opportunity to have their voice heard, a number of older children were cynical about whether it will really make any difference. This is the real challenge for CYPSC, to ensure that we build in sustainable and meaningful participation by children & young people, to listen to them and to bring about real improvements in their lives.

There is a need to develop a consultation strategy which considers both the large scale consultation during the development of strategic plans and also the support for ongoing representative participation in the work of the CYPSC.

There is a role also for CYPSC to promote the importance of “listening to voice of the child” among all agencies & organisations that work with children & young people and to promote best practice in ensuring that inclusive approaches to finding the voice of marginalised children is recognised.

Finally, the CYPSC is conscious that there is a need to develop approaches to consult with parents and during the course of the action plan it is envisaged that this will be addressed.

## **Outcome 6- Change Management**

### **Collaboration, co-operation and interagency work**

One of the rationales in establishing CYPSCs was for greater integration and joined-up working between community, voluntary, statutory and private services that work with, for and include children. In order to do this effectively, there is a need to ensure that best practice in interagency protocols and data sharing is developed and that the CYPSC has the best information and evidence based research available to inform decisions.

At a local level, there is a need for collaborative actions across agencies to ensure that strategic plans complement each other and that CYPSC is recognised as the structure best placed to co-ordinate actions relating to children & young people. Waterford Children & Young People’s Services Committee will work with all strategic partners to deliver collaborative and innovative responses to addressing gaps in service delivery for children & young people.

### **Information**

The research identified that information provision of mainstream universal services is considered adequate, however, targeted services were viewed as less accessible both in terms of quick access and information about such services. The difficulties that parents have in identifying where and how to access services for children was noted in the findings. The need for more clarity in referral systems was also evident among many professionals working in children and young people’s services who reported difficulties in accessing additional supports and assessments for children.

The findings point to the need for one central online Waterford hub for child and family services. In addition, it was suggested that the inclusion of partners such as the Citizens Information Services and the Local Authority libraries will be essential. There is also scope for provision of child family services information in a central physical site as well as through mobile units and outreach.



## **Children & Young People's Workplan**

In this Workplan for Children and Young People, the *national* outcomes for children in Ireland are linked with *local* priority areas, objectives, indicators and activities.

The needs analysis which informs this plan was carried out prior to the announcement of the extension of the age range 18-25years for CYPSC.

Waterford CYPSC is very conscious of the necessity to assess the needs of this target group and will do so during the course of this Workplan, in conjunction with other agencies responsible for delivering services to young people.

The actions identified below are based on the needs identified in the needs analysis and while they are categorised under the 5 National Outcomes, a number of the actions cross over a number of national outcomes and will involve collaborative working from various CYPSC subgroups.

## Section 5: Summary of Children and Young People’s Plan for Waterford

Outcome Areas	Local Priority Areas *
Active and healthy, physical and mental wellbeing	<ul style="list-style-type: none"> <li>• Children &amp; Youth Mental Health</li> <li>• Adolescent Health services in rural areas</li> <li>• Drugs &amp; Alcohol</li> <li>• Healthy diet &amp; obesity</li> <li>• Healthy activities</li> </ul>
Achieving full potential in learning and development	<ul style="list-style-type: none"> <li>• Early School Leaving</li> <li>• School Attendance, Participation &amp; Retention</li> <li>• Transitions</li> <li>• Early Childhood Development – family literacy</li> </ul>
Safe and protected from harm	<ul style="list-style-type: none"> <li>• Prevention Partnership &amp; Family Support</li> <li>• Early Intervention</li> <li>• Restorative Practice</li> <li>• Cyberbullying &amp; Internet Safety</li> <li>• Parenting &amp; Community Based Supports</li> </ul>
Economic security and opportunity	<ul style="list-style-type: none"> <li>• 18-25 years not in education, training or employment</li> </ul>
Connected, respected and contributing to their world	<ul style="list-style-type: none"> <li>• Children &amp; Youth Participation</li> <li>• Service Delivery in Rural Areas – Shared Hubs</li> </ul>

Change Management	Local Priority Areas
	<ul style="list-style-type: none"> <li>• Research &amp; Information</li> <li>• Interagency working</li> <li>• Critical Incident Protocol</li> <li>• Information Sharing Protocols</li> </ul>

## Section 6: Action Plan for Waterford Children and Young People’s Services Committee

Action Plan for Waterford Children and Young People’s Services Committee							
Outcome 1: Active and healthy, physical and mental wellbeing							
Priority Area	Objective(s)	Indicators	Target	Activities	Timeframe for completion	Lead Responsibility	Link to other plans
<b>Promoting Positive Mental Health</b>	<p>To promote positive mental health awareness and activities in the community</p> <p>To support those working on the frontline with children &amp; young people to manage mental health concerns</p>	Number of programmes and training delivered	2 Programmes annually	<p>Conduct audit of programmes operating for teenagers (esp 10-14 year cohort) across area in both Statutory &amp; Com/ Vol organisations</p> <p>Assess the need to develop a new Programme</p> <p>Coordinate rollout of positive mental health programmes &amp; training for frontline services &amp; staff working with young people (esp in Community /Voluntary sector)</p>	Ongoing over 3 year plan	<p>C&amp;YP Mental Health Subgroup</p> <p><b>(Partners)</b></p> <ul style="list-style-type: none"> <li>-Healthy Waterford</li> <li>-Health Promotion</li> <li>-Psychology</li> <li>-Comm &amp; Vol gps</li> <li>-NEPS</li> <li>-CAMHs</li> <li>-Comhairle na nOg</li> </ul>	<p>National Suicide Strategy - “Connecting for Life”</p> <p>Waterford Suicide Prevention Action Plan</p>
<b>Equity of Access for children &amp; young people to mental health services</b>	Improve access to MH services for young people in the city & county	Numbers of MH cases referred for assessment	An integrated referral & assessment system in operation	<p>Establish links with relevant agencies to explore the introduction of assessment &amp; early intervention service model across Waterford</p> <p>Support the development of common assessment tool / protocol for all frontline services incl. Com/Vol</p> <p>Explore the possibility of working with GP services to strengthen existing referral systems for young people</p>	2015 – 2016	C& YP Mental Health Subgroup	Better Outcomes Brighter Futures

# Action Plan for Waterford Children and Young People's Services Committee

## Outcome 1: Active and healthy, physical and mental wellbeing

Priority Area	Objective(s)	Indicators	Target	Activities	Timeframe for completion	Lead Responsibility	Link to other plans
<b>Access to Adolescent Health Services in Co. Waterford</b>	Improve Sexual Health, Mental Health and Emotional Well-being outcomes for young people in Co. Waterford	Number of schools outside City area using Squashy Couch Sexual Health Education Prog	SHE Prog will be available to all schools in county & city area (17 Secondary Schools)	Support the rollout & development of Adolescent Health and Information Service in Dungarvan & West Waterford  Utilise strategic partnerships and practice wisdom to effectively embed new youth health responses in rural Co. Waterford  Share practice wisdom on an inter-disciplinary basis to identify and address gaps and blocks in current responses to youth mental health needs	Ongoing over 3yr Plan	Tusla / C & YP Mental Health Subgroup  <b>(Partners)</b>  -HSE -Adolescent Subgroup -Comhairle na nOg -Youth Organisations -Community & Vol Organisations	Tusla Local Strategic Plan Healthy Waterford Green Schools
		Number of young people from West Waterford availing of Service	20% Increase in no of young people from rural area accessing supports				
		Number of counselling appointments for teenagers available in West Waterford	20% increase in Teenage Counselling hours in West Waterford				
<b>Information on Mental Health services for Children &amp; Young People in CYPSC area</b>	Increase awareness of services by professionals, parents & young people  Improve information about referral pathways to services	Increase in awareness of services & referral pathways by professionals, parents & young people	Information on services adapted for various target groups – eg GPs, Parents, Young People will be developed & disseminated	Map existing service provision for mental health support for young people  Poster will be developed and distributed to GPs in 14 PCT  Information leaflet developed for Parents  Information will be developed for Young People using website & social media	2015 / 2016	CYPSC Mental Health subgroup  <b>(Partners)</b> -Primary Care teams -Family Support Subg -LAP subgroup -Comhairle na nOg	Waterford Suicide Prevention Action Plan

## Action Plan for Waterford Children and Young People’s Services Committee

### Outcome 1: Active and healthy, physical and mental wellbeing

Priority Area	Objective(s)	Indicators	Target	Activities	Timeframe for completion	Lead Responsibility	Link to other plans
<b>Children and Young people have healthy diets</b>	Increase the capacity of the youth & community sector to promote healthy lifestyle choices	Number of Community & Youth workers availing of Health promotion programmes	1 “Cook it” programme annually	Roll out “Cook It” programme to Youth & Community sector workers across CYPSC area	Ongoing over 3year plan	Community Adolescent Subgroup	LECP
	Improve information dissemination and local uptake of National Health Promotion initiatives by Community & Youth workers	Evidence of increased engagement between Health Promotion Department and local Youth and Community sector	2 Healthy Food programmes for specific target groups	Develop & roll out workshops on obesity to frontline staff working with children & young people  Support roll out of 2 healthy food programmes for: 1 Young People leaving care 2 Young People moving to 3 <sup>rd</sup> level		(Partners) Health Promotion / Community Dietician	Healthy Waterford Acton Plan  HSE Health Promotion Plans
	Increase parental awareness of healthy lifestyle choices for children	Number of health / food related events organised by Community & Youth sector	2 Youth GIY Projects	Pilot development of GIY project with 2 Youth Projects (1 City, 1 County)  Establish what current initiatives and supports are available to parents e.g. household management & cooking skills		Healthy Waterford Project  Tusla Aftercare team  WIT  Family Support subgroup	

<p><b>Young People are engaged in healthy activities</b></p>	<p>Increase young people's access to healthy physical &amp; social activities, with a focus on the needs of those not engaged in sports</p> <p>Promote increased linkages with WSP &amp; Youth Sector staff across area</p>	<p>Number/range of healthy physical and social activities available to young people in the area outside of sporting activities</p> <p>Number of new/additional collaborations achieved between WSP and Youth Services across the area</p>	<p>20% increase in number of Young People involved in healthy physical and social activities (non-sport) in the period 2016 – 2019</p> <p>10% increase in awareness of/contact with WSP by Projects/Clubs/ services with no previous engagement with WSP</p>	<p>Collaborate with Waterford Sports Partnership to identify both existing and new opportunities for enhanced physical activity by young people</p> <p>Develop sustainable healthy activities with Young People</p> <p>Develop a youth-led network of positive local role models based on the "Activity Champions" concept</p> <p>Support roll out of Comhairle na nOg-led "Waterford Youth Discount Card" initiative with healthy activity providers/venues</p>	<p>Ongoing over 3yr plan</p>	<p>Community Adolescent Subgp</p> <p><b>(Partners)</b> Waterford Sports Partnership</p> <p>Healthy Waterford</p> <p>Comhairle na nOg</p> <p>Youth/Community &amp; Vol. orgs</p> <p>Youth sector staff</p>	<p>Waterford Sports Partnership Strategic Plan</p> <p>Healthy Waterford Action Plan</p> <p>Health Promotion Plan</p>
<p><b>Drugs and Alcohol</b></p>	<p>Establish the potential for a Harm Reduction approach to Drug and Alcohol Misuse by young people</p>	<p>Focus Group and follow-up meetings undertaken</p> <p>Measurable reduction in risk/drug-related harm to programme participants</p>	<p>2 inter-professional meetings held with at least 1 follow-up meeting p/a for review</p> <p>Pilot Programme rolled out in 2 sites (1 City, 1 County)</p>	<p>Organise a Focus Group with Substance Misuse professionals to discuss current responses to young people's drug and alcohol use</p> <p>Assess the need &amp; identify relevant evidence based programme</p> <p>Explore the potential for piloting innovative evidence-based programmes of facilitated learning with young people across Waterford</p>	<p>2015 - 2016</p> <p>2015 - 2016</p>	<p>Community Adolescent Sub-Gp</p> <p><b>(Partners)</b> Substance Misuse and allied services e.g. Substance Misuse Teams, Local Drugs and Drugs Outreach services</p> <p>RDTF</p>	<p>RDTF Strategic Plan</p> <p>LECP</p>

## Action Plan for Waterford Children and Young People's Services Committee

### Outcome 2: Achieving full potential in learning and development

Priority Area	Objective(s)	Indicators	Target	Activities	Timeframe for completion	Lead Responsibility	Link to other plans
<b>Attendance, Participation &amp; Retention of children &amp; young people in school</b>	To support strategies that improve school attendance rates	Reduction in number of suspensions & expulsions	10% Reduction in level of suspensions & expulsions	Support school attendance strategies in all local schools	Ongoing	Education Subgroup <b>(Partners)</b> Principals Networks Schools HSL & SCP SICAP RP Network	Education Welfare Service Strategic Plan
	To ensure supports are available for children experiencing difficulties in school	Uptake of RP training & approaches by schools	2 feeder schools preschool/primary /secondary	Promote a school attendance event in all schools each September  Promote the introduction of the Restorative Practice Model in whole school settings	ongoing		
<b>Parents Participation in schools</b>	To promote and support the development of structures to encourage increased participation of parents within their schools	Increase in the number of parents engaged with school activities	10% increase in parents participating in schools	To link with key stakeholders to explore the possibility of setting up a National Parents Council Network in Waterford  Host a meeting for School Parents Councils & Schools	2015-2016	Education subgroup  <b>(Partners)</b> Principals Networks  National Parents Council	
<b>Information &amp; supports for schools on referral pathways for children &amp; families requiring additional supports</b>	To build on existing work with schools on providing information & referral pathways for children & families	Distribution of information within schools	1 information workshop on referral pathways organised for schools	To host an annual information/networking meeting for School Principals & HSL /others	2015-2016	Education Subgroup  <b>(Partners)</b> LAP subgroup Family support subgp Info & research subgp	Tusla – National Service Delivery model
<b>Early Intervention for under 5yrs &amp; their families</b>	Improve school readiness of children through early intervention & prevention	Number of babies & parents receiving “Snuggle Books” pack	100% of new babies receive “Snuggle Books” pack	Develop & rollout of “Snuggle Books” early reading packs	ongoing	Family support subgp  <b>(Partners)</b> Childcare Committee Library Services ETB Public Health Nurses	Childcare Committee Plan  ETB – Literacy Strategy
		Number of families with young children availing of “Snuggle Books” follow up programmes	“Snuggle Books” follow up literacy programme rolled out in 4 pilot areas	Identify & pilot a community based model of communication that assists with school			

		Number of children in ECCE free Preschool yea	100% uptake of ECCE Free Preschool year	readiness with an emphasis on preparing for transition from home to preschool			
<b>Effective supports for children &amp; young people at education transition points in their lives</b>	To support children & young people at educational transition points	Map available life stage transition programmes  Pre-school transition programme	10% increase in number of schools delivering programme  100% preschools	Identify & research models of good practice which exist locally  Promote & support roll out of a transition programme in all pre-schools in area	ongoing	Education Subgp  <b>(Partners)</b> Principals Networks School Completion Comm / Vol orgs  Childcare Committee	Better Outcomes Policy  Dept. of Education  NCCA
<b>Linkages between schools &amp; community/voluntary organisations</b>	To promote the role of community/organisations esp. Youth orgs in working in partnership with schools	Number of new collaborations between schools & comm/vol orgs	2 new school / community collaborations	Host a workshop with school principals to promote & support connections  Examine potential to support “Partnership Schools” project in schools	Early 2016	Education Subgp  <b>(Partners)</b> Principals Networks Comm/Vol orgs	National Parents Council Prog– “Partnership Schools”
<b>Access for vulnerable young people in further education &amp; higher level education</b>	Develop new & strengthen existing linkages with education providers	Number of young people NEET, moving on to FE & Higher level education  Number of schools from rural areas involved in access programme	10% Increase no of YP availing of educational opportunities  2 rural schools involved in access programme with WIT	Extend linkages between Access Support Offices in Further /Higher Education & schools across CYPSC area  Support roll out of a soft skills programme for 15-25 year olds	Ongoing over 3yr plan  Late 2015	Education Subgp  <b>(Partners)</b> ETB WIT Further Educ services  SICAP Schools	SICAP
<b>Supports for very young early school leavers – under 16</b>	Ensure that any early school leaver under 16 has access to timely support to continue education, especially in rural area	Local services working in collaboration to address needs of young early school leavers	Referral system established	Work in collaboration with SICAP to develop a model of good practice to engage very young school leavers  Identify different pathways to educational attainment  Support young people esp in rural areas to access alternative education  Raise awareness among schools & those working with young people	ongoing	Education Subgroup  <b>(Partners)</b> -Education & Welfare Service - SICAP -ETB -Schools -Youth Projects	SICAP



## Action Plan for Waterford Children and Young People's Services Committee

### Outcome 3: Safe and protected from harm

Priority Area	Objective(s)	Indicators	Target	Activities	Timeframe for completion	Lead Responsibility	Link to other plans
<b>Prevention, Partnership &amp; Family Support (PPFS)</b>	To ensure all children & families in need of support receive a high quality, co-ordinated service	Number of referrals to PPFS	30 % Increase in number of frontline staff completing Meitheal training	Roll out Meitheal information briefings for all agencies working with Children & Families	Ongoing	LAP steering group / Tusla	Better Outcomes, Brighter Futures  TUSLA – National Service Delivery Model
		Number of agencies & services involved in steering group		Develop & sustain 4 Child & Family Networks	ongoing	<b>(Partners)</b> -Schools -EWS -Comm & Vol Orgs	
	To ensure the Child & Family Networks are inclusive of all services working with Children & Families in their area	Number of agencies & services attending information briefings	100% of services involved in PPFS will inform families about Meitheal	Deliver Meitheal training programme to all frontline child & family services	ongoing	-RP Network	
		Number of agencies & services involved in the Meitheal Process and as Lead Practitioners	Where trained, 100% of services will use Meitheal as a practice model	Evaluate the current system of PPFS in Waterford to date	Dec 16		
	To ensure that all services providers have knowledge of PPFS & local referral pathways	Number of staff in agencies & comm./vol organisations attending Meitheal training	Module on Meitheal & RP will be aligned & included in each training	Develop training module to promote common approach to delivery of PPFS & Restorative Practice	Ongoing		
			100% of presenting children & families will be offered support appropriate to their needs	Support the use of Meitheal model to assist vulnerable children at transition points in their lives.	ongoing		

<p><b>Reducing risks associated with young people's online activity</b></p>	<p>Promote healthy online activity by young people</p> <p>Provide information for parents on internet use</p>	<p>Number of specific initiatives delivered with young people on theme of online safety/reducing related risks</p> <p>Improved collaboration with Comhairle na nOg towards achieving Cyber Bullying and Internet Safety priorities</p> <p>Number of specific information/education initiatives undertaken with parents in the target area</p>	<p>1 Internet Safety conference</p> <p>60% uptake by parents of targeted responses</p>	<p>Support Comhairle na nOg to implement Cyber Bullying and Internet Safety priorities</p> <p>1 County-wide "Internet Safety" conference and/or awareness raising event developed and delivered in partnership with young people</p> <p>Review existing guidelines for parents on safe and healthy Internet use and disseminate through appropriate networks</p>	<p>Ongoing</p> <p>2015/2016</p>	<p>Community Adolescent subgroup</p> <p><b>(Partners)</b></p> <ul style="list-style-type: none"> <li>-C&amp;Y Mental Health subgroup</li> <li>-Family Support Subgroup</li> <li>-Comhairle na nOg</li> </ul>	
<p><b>Supports for Parents</b></p>	<p>To co-ordinate, and where possible increase supports for parents so that they have information, skills and support to rear their children to reach their potential.</p> <p>To create awareness &amp; linkages to supports for families dealing with the impact on children/ young people of domestic abuse, parental mental health difficulties or substance misuse</p> <p>To identify &amp; highlight supports required for parents with children with multiple or additional needs</p>	<p>Mapping of supports to parents complete and available to professionals &amp; the public</p> <p>Number of initiatives that support parents that are available across each age cohort &amp; dispersed throughout the city &amp; county</p> <p>Communication pathways developed to assist families to make links with services relevant to their presenting need</p> <p>Development of additional services to respond to gaps in current service provision</p>	<p>Co-ordinate the delivery of parenting programmes throughout the city &amp; county</p> <p>Calendar of Parenting courses available</p> <p>20% increase in uptake of parenting supports by hard to reach groups</p>	<p>Consult with parents about their needs to get their input in to proposed actions</p> <p>Disseminate information on all parenting supports across Waterford CYPSC area using website</p> <p>Develop annual calendar of parenting courses</p> <p>Establish the parenting needs addressed by the current programmes and interventions and identify the gaps.</p> <p>Seek resources to roll out targeted supports to parents dealing with conflict/aggression from their children / adolescents in the home</p> <p>Develop universal service provision by working with schools to offer once off parenting seminars and sign posting supports for</p>	<p>2015-2016</p> <p>Ongoing 3 yrs</p> <p>Ongoing 3yr plan, dependent on resources</p> <p>2016</p>	<p>Family Support Subgroup</p> <p><b>(Partners)</b></p> <ul style="list-style-type: none"> <li>Info &amp; Research subgroup</li> <li>Community Adolescent subgroup</li> <li>Schools</li> <li>Childcare Committee</li> </ul>	<p>Better Outcomes, Brighter Futures</p>

				parents and families Make links across the relevant services to improve knowledge of and access to services for families with these additional needs	Ongoing		
<b>Restorative Practice</b>	To develop Restorative Practice Community across Waterford	Number of agencies / organisations utilising RP approaches  Numbers availing of RP Training  Numbers of schools & early years services using RP approaches	10% annual increase in uptake of RP training by Children & Family service providers  2 new schools will adopt RP approach	Support the roll out of RP Network Strategy  Support the development of RP in early years services & primary & secondary schools across area  Align delivery of RP & Meitheal models	Ongoing 3yr plan	RP Network  Schools Principals Networks  Childcare Committee  LAP Steering Group	Waterford Restorative Practice Strategic Plan

## Action Plan for Waterford Children and Young People's Services Committee

### Outcome 4: Economic security and opportunity

Priority Area	Objective(s)	Indicators	Target	Activities	Timeframe for completion	Lead Responsibility	Link to other plans
<b>Under 18s not in employment, education or training</b>	To encourage all young people to avail of educational & training opportunities	Numbers of young people under 18 not in employment, education or training	50% under 18 years NEET in Waterford area identified	Raise awareness of need for a tracking model for under 18s not in education, employment or training  Establish support needs of this group	2015-2016	Education subgroup  <b>(Partners)</b> -SICAP -DSP/INTREO -SOLAS  -LAP Subgroup	LECP  SICAP
<b>Young People aged 18-25</b>	Increase the focus & establish the needs of 18-25	Increased awareness of needs of 18-25 years	Completion of needs analysis and plan of action	Review the data available on this age cohort Establish the services available & gaps  Coordinate research & completion of needs analysis  Develop actions to address needs of 18-25	Mid 2016	Info & research subgp  <b>(Partners)</b> Community Adolescent subgroup  SICAP	Better Outcomes  SICAP

## Action Plan for Waterford Children and Young People's Services Committee

### Outcome 5: Connected, respected and contributing to their world

Priority Area	Objective(s)	Indicators	Target	Activities	Timeframe for completion	Lead Responsibility	Link to other plans
<b>Integrating the views of Children, Young People &amp; Parents into the work of CYPSC</b>	To facilitate the active participation of children, young people and parents into the work of CYPSC	Numbers of consultative forums are identified  Consultation with stakeholders planned in work of CYPSC	Consultation with children & young people is integrated into CYPSC actions	Engage with and support current participation forums and continue to formalise & strengthen their role in CYPSC  Develop a consultation strategy for CYPSC  Ensure that all Subgroups consider how to listen to the views of children, young people and parents	Ongoing  2015  ongoing	Community Adolescent subgroup  <b>(Partners)</b>  Info & Research Subgroup  Family support subgp	Better Outcomes  National Strategy on Children & Young Peoples Participation in Decision Making
<b>Comhairle na nOg</b>	Continue to engage with Waterford Comhairle na nOg  Promote an awareness of the importance of "listening to Children & Young People" across all agencies	Comhairle na nOg contributes to CYPSC meetings and plans  CYPSC will support the work of Comhairle na nOg	Comhairle na nOg will attend CYPSC 2 times per year	Comhairle na nOg will attend CYPSC meeting 2 times per year & participate in subgroups as appropriate  CYPSC will participate on Comhairle na nOg Steering Group & AGM  Consult with Comhairle na nOg and support other activities as required	ongoing	Community Adolescent subgroup  <b>(Partner)</b> Info & Research Subgroup	Better Outcomes  National Strategy on Children & Young Peoples Participation in Decision Making
<b>Family Support in rural areas</b>	Ensure that supports & services are accessible to all families in CYPSC area  Support positive developmental outcomes for under 5 years	The number of initiatives that support families in rural areas  The number of initiatives that support positive development outcomes for under 5's	1 pilot rural family support initiative is established  Family Support services will be available in 3 rural areas (where service	Establish models of service provision that are particularly suitable for families and young people in rural areas  Pilot a rural family support initiative with one primary school  Identify & begin to address the barriers for families	Ongoing over 3 year plan	Family support subgp  <b>(Partners)</b> Community adolescent subgroup  Schools	Better Outcomes  Tusla – National Service Delivery Model  LECP

## Action Plan for Waterford Children and Young People's Services Committee

### Outcome 5: Connected, respected and contributing to their world

Priority Area	Objective(s)	Indicators	Target	Activities	Timeframe for completion	Lead Responsibility	Link to other plans
			is not currently available)	accessing services for children  Extend targeted family support service provision in 3 rural areas			

## Action Plan for Waterford Children and Young People's Services Committee

### Change management

Priority Area	Objective(s)	Indicators	Target	Activities	Timeframe for completion	Lead Responsibility	Link to other plans
<b>Data collation &amp; dissemination</b>	To update & disseminate data to CYPSC for information, planning & decision making	To link with local library services to update members organisations on new publications national/regional)	The CYPSC plan is current, relevant & needs led	<p>To collate relevant national, regional and local data from a variety of sources</p> <p>Identify trends and issues arising for children, young people and families</p> <p>To provide a bi-annually data report</p> <p>Explore potential for a tracking system to monitor data to inform decision making</p>	Ongoing 3 yr life of the plan	Info & research subgroup	LECP SICAP
<b>Information Provision</b>	<p>To provide information on services and supports for families, parents, children &amp; young people</p> <p>To provide information on referral pathways for children &amp; young peoples services to all professionals working in the area</p>	<p>To work with Waterford City &amp; County Council to establish website</p> <p>To include information on Waterford City &amp; County Council website</p>	<p>To reconfigure the site and consult with CYPSC to ensure site meets our needs</p> <p>Raise profile of CYPSC as an information hub re. children &amp; young people</p>	<p>To develop the Waterford Life web portal as an information source for the city &amp; county (families and organisations) including:</p> <p>Launch the website and promote uptake by Parents, Young People &amp; Children</p> <p>Develop a sustainability plan for the website</p> <p>Ensure that information on parenting supports are available and easily accessible in 1 place</p>	Ongoing 3 yr life of plan	Info & Research subgroup	

## Action Plan for Waterford Children and Young People's Services Committee

### Change management

Priority Area	Objective(s)	Indicators	Target	Activities	Timeframe for completion	Lead Responsibility	Link to other plans
			1 annual information workshop	Collaborate with other CYPSC subgroups to organise information workshop for different sectors, Schools, GP, community & voluntary, mental health services			
<b>Interagency Working &amp; Collaboration</b>	<p>To ensure that Interagency Working is promoted &amp; imbedded in the Agencies &amp; Organisations working with Children &amp; Young People</p> <p>Promote an integrated approach to developing services at local level</p>	<p>To develop interagency policies &amp; protocol</p> <p>Ensure that agencies consider innovate ways to deliver services in rural areas</p>	<p>2 workshops will be delivered to promote interagency working</p> <p>1 Rural Family support service model established</p>	<p>Roll out a series of workshops on interagency protocols across all agencies &amp; organisations</p> <p>Roll out workshops on data sharing protocols</p> <p>Develop rural hubs using existing network areas to deliver multiagency services in rural areas</p>	Ongoing over 3yr plan	<p>Info sugp</p> <p><b>(Partners)</b> Community Adolescents subgp Family Support subgp LAP subgroup Waterford City &amp; County Council</p>	<p>LECP</p> <p>SICAP</p>
<b>Advocacy on National Policy issues &amp; locally identified deficits in local provision</b>	<p>Advocate for the maintenance &amp; increasing of resources for supports for at risk students &amp; community youth projects</p> <p>Advocate for improved provision of Mental Health services for 16-18 year olds</p>	<p>To regularly liaise with relevant national agencies &amp; policy makers</p> <p>Increase in the provision of MH services for 16-18yrs</p>	<p>New &amp; Increased resources in Waterford area to support vulnerable groups</p> <p>Improved provision of service</p>	<p>Raise awareness of the impact of reductions &amp; removal of supports/ services for at risk students &amp; vulnerable young people at local level</p> <p>Maintain awareness &amp; support at local level for the National Policy on MH services for 16-18yr as per "Better Outcomes – Brighter Futures"</p>	Ongoing	CYPSC	<p>Better Outcomes Brighter Futures</p> <p>National SOPs – CAMHS</p> <p>National Youth Strategy</p>





## **Section 7: Monitoring and Review**

Waterford Children & Young People's Services Committee is committed to a continuous process of monitoring and review of this workplan and will undertake a comprehensive review on an annual basis over the lifespan of the 3 year period 2015 -2018.

The annual review will consider progress on the priority actions and the impact on outcomes for children and young people living in the area. Learning from the review process will inform future planning and ensure that any change to the remit or function of the CYPSC and the subgroups is addressed.

Each subgroup will submit a progress report to the CYPSC meeting on a monthly basis.

The Waterford CYPSC will continue to engage with children, young people, families and stakeholders to ensure that our workplan remains focussed on the needs of children & young people.

Waterford Children & Young People's Services Committee will liaise on an ongoing basis and share information with the Waterford Local Community Development Committee (LCDC) on an annual basis and will work with all strategic partners locally to improve outcomes for children & young people throughout the area.

Waterford CYPSC will report to the Department of Children & Youth Affairs (DCYA) and the National CYPSC Steering Group on a quarterly basis as required.

## **Section 8: Appendices**

### **Appendix 1**

#### **Terms of Reference for the CYPSC**

##### **Waterford Children & Young Peoples' Services Committee - Terms of Reference**

###### **Mandate**

The Children & Young People's Services Committee derives its mandate from the National Children's Strategy (2000) which seeks to establish a 'whole child' perspective at the centre of all relevant policy development and service delivery. This perspective recognises the multiple inter-linked dimensions of children's development and the mix of the child's own inner resources, family and other informal supports as well as formal supports that are involved. The 'whole child' perspective informs the proposal in the Government document, 'Towards 2016'(2007) which specifically calls for the establishment of Children & Young People's Services Committees as models of best practice promoting integrated, locally-led, strategic planning for children's services in order to respond flexibly and appropriately across the range of presenting needs.

###### **Guiding Principles**

- To give every opportunity for the voice of the child and the young person to be heard.
- For all stakeholders to work together in partnership so as to engage with all resources in the community that contribute to the wellbeing of children and young people.
- To seek active commitment from senior management of member organisations to support the goal of the CYPSC to develop a more responsive effective and integrated service provision.
- To adopt a lifecycle approach that aims at providing support at all stages of family development over the child's age span of 0 – 24 years.

###### **Purpose**

The overall purpose of the CYPSC is to secure better developmental outcomes for all children in Waterford, especially those with disadvantaged status, through more effective integration of existing services and interventions at local level. The basis for measuring the achievement of this purpose is derived from the 5 National Outcomes, as follows:

- Healthy, both physically and mentally
- Supported in active learning
- Safe from accidental and intentional harm and secure in the immediate and wider physical environment
- Economically secure
- Part of positive networks of family, friends, neighbours and the community and included and participating in society.

###### **Overall goals**

**The timely, co-ordinated and effective response to the needs of children, youth & families in Waterford**

1. To bring partners within a single framework for the delivery of services to children, young people and their families within the County.
2. To provide strategic leadership to ensure the development of and delivery of improved outcomes for children, young people and their families.
3. To agree and implement an action plan.
4. To act cohesively to implement strategic decisions of the committee.

## **Role of Committee**

### **Key responsibilities**

- To develop a strategic approach to interagency collaboration by implementing an outcome focused shared work plan for children & young people's services.
- To conduct a needs analysis relevant to the specified national outcomes for children & young people and other relevant local issues.
- To map the services currently available in the county.
- To identify the gaps and priorities in relation to population groups and to services in the county.
- To promote collaboration on sharing information on existing services and outcomes
- To specifically target areas of overlap and duplication in service provision to allow reorientation of services to fill identified gaps
- To target resources and oversee delivery of initiatives that will improve outcomes for children & young people and which require collaboration between services.
- To create effective systems of co-ordinated services, support and opportunities to improve outcomes for children & young people.
- To eliminate fragmentation and duplication of services by ensuring more effective collaboration between children, young people and family services.
- To strengthen the decision-making capacity at local level.
- To feed back to the DCYA about relevant issues for policy development.
- To evaluate the implementation of the Work Plan on a regular basis.

### **Reporting Relationships**

- The CYPSC will report to DCYA on a regular basis and provide feedback to the Interdepartmental CYPSC Steering Group on issues of national significance. At local level, the CYPSC will provide feedback to the LCDC & will inform the development of Child & Youth Priorities in the LECF. On an annual basis, at a minimum, a report on the activities and progress of the CYPSC will be made to the LCDC.

### **Membership:**

The membership of the Waterford CYPSC will be as follows:

• Tusla	2 representatives
• Waterford City & County Council	1 representative
• ETB	1 representative
• An Garda Síochána	1 representative
• Probation service	1 representative
• Secondary Schools Principals	1 representative
• Primary Schools Principals	1 representative
• Local Development Companies	
• Youth Organisations	
Youth Services	1 representative
Foroige	1 representative
• Childcare Committee	1 representative
• Traveller project	1 representative
• Barnardos	1 representative
• FRC	2 representative
• ISPCC	1 representative
• WIT	1 representative
• HSE	2 representatives

Waterford CYPSC may extend membership to other agencies to join following discussion at CYPSC meeting

## **Term of Office**

Membership of the Committee will be reviewed after 3 years

## **Role of Chair**

- As stipulated by the DCYA, the role of Chair is held by The Area Manager, Tusla

The key responsibilities of the Chair are to:

- Provide leadership and direction for the Committee
- Ensure the effectiveness of the Committee in all aspects of its role, including delivery of its work programme
- Ensures appropriate interaction between the Committee and external stakeholders.
- In the case of unavailability of the person in the role of Chair at any meeting, these responsibilities will be exercised by the Vice-Chair

## **Role of Vice-Chair**

The role of the Vice Chair is held by the nominee from Waterford City & County Council

The key responsibilities of the Vice-Chair are to:

- Support the Chair in the performance of her/his duties
- In the case of unavailability of the person in the role of Chair at any meeting, to take the role of Chair for that meeting.

## **Role of Coordinator**

The key responsibilities of the CYPSC Coordinator are to:

- Organise and administer meetings of the Committee
- Ensure the collection, provision and reporting of relevant data and information
- Foster and develop relationships with key personnel including committee members and other stakeholders involved in provision of child & family services

## **Meetings**

- Frequency of Meetings:  
Meetings will take place monthly, to be reviewed at the start of each year.

## **Quorum**

At meetings of the CYPSC, 25% of the total number of members shall constitute a quorum. If after the expiration of thirty minutes after the time appointed for the meeting, a quorum is not present, the CYPSC shall rise and the meeting shall stand adjourned to a date to be then named by the Chair of the meeting

## **Decision making**

Decision making by consensus will be encouraged where possible. In circumstances where it is necessary to make a decision and where there is no consensus, a decision by the committee can be carried by a simple majority.

## **Notice of Meetings**

A notice to attend the meeting, and a draft agenda of business items for the meeting, shall be sent to each member of the Committee at least five working days before any meeting. Such notice will include any documentation relevant to the agenda for the meeting in so far as possible.

## **Minutes of Meetings**

The minutes of every CYPSC meeting when adopted shall be signed by the Chair at such meeting at which the minutes are considered, and shall be kept and certified by the CYPSC Co-ordinator. No Minutes shall be considered for confirmation unless a copy thereof has been previously forwarded to every member of the Children & Young People's Services

Committee. The Minutes of all meetings shall contain the names of the members and officials present together with particulars of all decisions and recommendations made.

### **Attendance at Meetings**

If a CYPSC member is absent from three consecutive meetings without any apology, the CYPSC may ask the agency or organisation which is represented by this member, to nominate another person to take his/her place on the Committee.

### **Substitution of Members**

Substitute delegates may only be nominated by permission of the Chair.

### **Sub-Groups**

- Purpose & function: The purposes of the individual Sub-Groups are determined by the outcomes identified for the Work Plan. Thus each sub-group is established around a specific outcome or issue and identifies and develop actions that promote and contribute to achievement of the desired outcomes.
- Membership: Membership of Sub-Groups is drawn from organisations, groups and individuals who have particular knowledge and expertise in the areas relating to the specific priorities of each of the Sub-Groups
- Chair: Each of the Sub-Groups will be chaired by a member of the Children & Young People's Services Committee who has particular responsibilities and expertise in the area relating to the Sub-Group's priorities.
- Where possible efforts will be made not to duplicate existing groups and thereby increase demands on the same individuals

### **Reporting mechanism**

At a national level: The CYPSC will furnish update reports to the National CYPSC Co-ordinator & DCYA as required.

At local level: The CSC will provide update reports to the LCDC as required.

### **Review & Evaluation**

The Committee, will undertake an annual review and evaluation of its performance. This will be based on the goals and targets as outlined in the Work Plan.

## **Appendix 2**

### **Membership of CYPSC Subgroups**

#### **1 Education Subgroup**

Maria Lindell (Chair)	Waterford Area Partnership
Eamon Flynn	School Attendance Officer
Glenn Lynch	Ballybeg Education Project
Karen Rice	Foroige - Ferrybank
Rose Murphy	Waterford Childcare Committee
Sharon Walsh	School Completion Project
Noreen Reilly	WWETB / School Principal
Nuala Lennon	Waterford Institute of Technology

#### **2 Information & Research Subgroup**

Anne Goodwin (Chair)	St. Brigids FRC
Tony Moynihan	Tusla
Co-ordinator	Comhairle na nOg
Niamh Baldwin	Library Services
Kieran Devery	Tusla
Claire Loughnane	Waterford City & County Council

#### **3 Family Support Subgroup**

Catherine Joyce (Chair)	Barnardos
Alex O'Keeffe	ISPCC
Heather Kiely	Sacred Heart FRC
Catherine Finn	Waterford City & County Council
Anne Nolan	ISU
Margaret Collins	Tusla - Welfare Team Dungarvan
Jean Power	Foróige
Noirin Healy Magwa	Waterford Childcare Committee
Breda Murphy	Women's Centre
Joan Dunne	PPFS Co-ordinator - Tusla
Lorna Dee Carter	Barnardos
Breda Fell	SER Family Support Network (Drugs)

#### **4 Community Adolescent Sub Group**

Pat McBride (Chair)	WSTCYS
Ken Sauvage	Treo
Niamh Hogan	Youth Worker – West Waterford
Heather Sinnott	Le Cheile
Maire Morrissey	Squashy Couch
Aileen O'Brien	Foróige
Annette Dowling	Student Mothers Project
Martin Fitzgerald	Youth Officer - ETB
Co-ordinator	Comhairle na nOg
Kate Weeks	Substance Misuse Service

## **5 Local Area Pathways (LAP)**

Vincent Daly (Chair)	Principal SW - Tusla
Joan Dunne	Tusla PPFS
Alex O'Keeffe	ISPCC
Anne Goodwin	St. Brigids
Catherine Finn	Social Worker -City & County Council
Una Conroy	Barnardos
Eamonn Flynn	Education & Welfare Service - Tusla
Finbarr O'Sullivan	Gardai
Margaret Collins	Tusla
Gail O'Sullivan	Foróige
Mairead O'Shea	Ass. Director PHN
Chris Fogarty	WSTCYS
Niamh Flavin	Respond

## **6 Child & Youth Mental Health Subgroup**

Mairi Keenleyside (Chair)	Principal Psychologist – HSE
Jim Gibson	Area Manager, Tusla
Laura Walsh	St. Brigids Teenage Counselling Service
Ursula Ryan	Squashy Couch
Maire Morrissey	Squashy Couch
Aurelia Bridges	NEPS
Esther Doyle	Guidance Counsellor – Presentation Sec School
Maria Lindell	WAP
Stephen Power	Foroige
Susan Murphy	Primary Care Manager - HSE
Kathleen Mitchell	CAMHS
Claire O'Neill	Dungarvan Youth Justice Project



## **Appendix 3**

### **Glossary of Terms**

**CYPSC-** Children and Young People Service Committee

*-Structure for bringing together a diverse group of agencies to engage in joint planning of services for children under the 5 national outcomes*

**WWETB-** Wexford and Waterford Education and Training Board

**PPFS-** Prevention, Partnership and Family Support

*-An integrated system of children's services that will have formal linkages with community/voluntary and statutory agencies.*

**Meitheal-** Key model of the development of an area-based approach to PPFS

*- The actual structure underpinning the collaborative piece of forming a team around the child or young person*

**CFSN-** Child and Family Support Networks

*-Building on existing networks in each management area consisting of local statutory providers, local voluntary/community children and family services and Agency staff to assist in forming a "Meitheal".*

**FRC-** Family Resource Centre

**WAP-** Waterford Area Partnership

*Provides supports to target groups and all communities regarded as socially excluded on a citywide basis*

**WSP-**Waterford Sports Partnership

*Involved in increasing participation in sport and physical activity, especially amongst specific target groups*

**LCDC-** Local Community Development Committee

*-Established by resolution of the Local Authority, have a primary responsibility for coordinating, planning and overseeing local and community development funding*

-

**LECP-** Local Economic and Community Plan

*- LCDC are aiming to develop this in order to identify actions to strengthen and develop the economic and community elements of each local authority*

**PPN-** Public Participation Network

*- A replacement for the community forum, providing a mechanism for public representation of the LCDC*

**SICAP-** Social Inclusion Community Activation Plan

*- A national Community Program in replacement of the County/City board*

**CDP-** Community Development Project

**Tusla-** Child and Family Agency

*- Established by the Department of Children and Youth Affairs in January 2014*

**UN Convention on the Rights of the Child**

**Article 12** - *The Right to be heard or the Child's Opinion*

**Article 19** - *The Right to be Safe or Protection from abuse or neglect*

**NSDF-** National Service Delivery Framework for TUSLA

*- Seeks to deliver services within a coordinated, multi-disciplinary and multi-agency framework, from universal to tertiary level services.*

**SOLAS (FAS)**- Training Under the ETB

*Employment services and programs that are now the responsibility of the DSP*

**INTREO**- Employment Services in the DSP

*Point of contact for all employment and income supports, designed to provide a more streamlined approach.*

**W.I.T**- Waterford Institute of Technology

**Children's First**- National Policy for the protection of children

**DSP**- Department of Social Protection

**DEIS Schools**- Delivering Equality of Opportunity in Schools experiencing educational disadvantage

*- Focus on addressing the educational needs of children and young people from disadvantaged communities from pre-school to second level*

**SCP**- School Completion Programme

*- Department of Education and Science Initiative in tackling early school leaving in primary and second level schools*

**NEWB**- National Education Welfare Board (TUSLA) now renamed **Educational Welfare Service**

**Child Care Committee**

*Role is to support the implementation of National Child Care Policy at local level and to provide early years and school aged services with information, training and support.*

**Comhairle na nOg**- Child and Youth Council within the Local Authority

*-Designed to enable young people to have a voice on the services, policies and issues that affect them in their local area.*

**Barnardos**- Children's Charity, operate Family Support Projects in Waterford & Dungarvan

**ISPCC**- Irish Society for the Prevention of Cruelty to Children

**IPPN**- Irish Primary Principles Network

**NAPDP**- National Association of Principals and Deputy Principals at secondary level

**FET**- Further Education and Training

*- 5-year strategy under the provision of education and training (SOLAS)*

**DCYA**- Department of Children and Youth Affairs

**DSP**- Department of Social Protection

**CES**- Centre for Effective Services

**NCCA** – National Council for Curriculum & Assessment

*- Statutory body responsible for curriculum development in Preschool, Primary & Secondary sectors.*

**Healthy Waterford** – Action Plan for Waterford under World Health Organisation (WHO) Healthy Cities Programme – led by Waterford City & County Council & LCDC- develops actions to ensure healthy opportunities for all in Waterford