



# Roscommon

## Children & Young People's Services Committee

### Children and Young People's Plan

**2022- 2024**

**TÚSLA**  
An Ghníomhaireacht um  
Leanaí agus an Teaghlach  
Child and Family Agency



## Contact

The Roscommon Children and Young People's Services Committee welcomes comments, views and opinions about our Children and Young People's Plan.

Please contact:

Caroline Duignan,

Roscommon Children and Young People's Services Committee Co-ordinator

[caroline.duignan@tusla.ie](mailto:caroline.duignan@tusla.ie)

**Mob:** 087-2941488

Copies of this plan are available on: [www.cypsc.ie](http://www.cypsc.ie)



## Foreword

As chairperson of Roscommon Children and Young People's Services Committee, I am delighted to present the Children and Young People's Plan 2022 – 2024.

This is Roscommon's second Children and Young People's Plan and will build upon the good work undertaken by Roscommon Children and Young People's Services Committee to date.

This plan will guide the committee's efforts to progress its overarching goal of improving outcomes for children and young people through collaborative working. Implementing this plan will bring about changes to the range of supports and initiatives that are provided for children, young people and their families.

While collaborative working is challenging, there is significant commitment to this way of working in Roscommon, and I would like to thank all of the statutory, community and voluntary organisations who have committed to developing this plan.

I look forward to working with all CYPSC members and organisations to achieve the aims of this plan for the benefit of children and young people in Roscommon.

John Donnellan

Chair, Roscommon Children and Young People's Services Committee



# Contents

<b>SECTION 1: INTRODUCTION .....</b>	<b>1</b>
<i>BACKGROUND TO CHILDREN AND YOUNG PEOPLE’S SERVICES COMMITTEES .....</i>	<i>2</i>
<i>WHO WE ARE.....</i>	<i>3</i>
<i>REVIEW OF PREVIOUS PLAN .....</i>	<i>6</i>
<i>HOW THE CHILDREN AND YOUNG PEOPLE’S PLAN WAS DEVELOPED.....</i>	<i>13</i>
<b>SECTION 2: SOCIO-DEMOGRAPHIC PROFILE OF ROSCOMMON .....</b>	<b>15</b>
<i>COUNTY PROFILE.....</i>	<i>16</i>
<b>SECTION 3: OVERVIEW OF SERVICES TO CHILDREN AND FAMILIES IN ROSCOMMON .....</b>	<b>31</b>
<i>OVERVIEW OF SERVICES.....</i>	<i>32</i>
<b>SECTION 4: LOCAL NEEDS ANALYSIS IN ROSCOMMON .....</b>	<b>41</b>
<i>OUTCOME AREA 1 ACTIVE AND HEALTHY, PHYSICAL AND MENTAL WELLBEING.....</i>	<i>42</i>
<i>OUTCOME AREA 2 ACHIEVING IN ALL AREAS OF LEARNING AND DEVELOPMENT.....</i>	<i>43</i>
<i>OUTCOME AREA 3 SAFE AND PROTECTED FROM HARM .....</i>	<i>44</i>
<i>OUTCOME AREA 4 ECONOMIC SECURITY AND OPPORTUNITY.....</i>	<i>45</i>
<i>OUTCOME AREA 5 CONNECTED, RESPECTED AND CONTRIBUTING TO THEIR WORLD .....</i>	<i>46</i>
<b>SECTION 5: SUMMARY OF CHILDREN AND YOUNG PEOPLE’S PLAN FOR ROSCOMMON .....</b>	<b>47</b>
<b>SECTION 6: ACTION PLAN FOR 2022 - 2024.....</b>	<b>48</b>
<b>SECTION 7: MONITORING AND REVIEW .....</b>	<b>60</b>
<b>SECTION 8: APPENDICES .....</b>	<b>61</b>
<i>APPENDIX 1:GLOSSARY OF ABBREVIATIONS.....</i>	<i>61</i>
<i>APPENDIX 2: ROSCOMMON CYPSC TERMS OF REFERENCE.....</i>	<i>62</i>
<i>APPENDIX 3: DISCUSSION DOCUMENT FOR ROSCOMMON CYPSC ON SUPPORTING THE SLOVAKIAN ROMA POPULATION IN THE COUNTY.....</i>	<i>64</i>

## Section 1: Introduction

The purpose of the Children and Young People's Services Committees is to secure better outcomes for children and young people through more effective co-operation and collaboration by existing services and through interventions at local level.

CYPSC work towards the five national outcomes for children and young people in Ireland. These are that children and young people

- 1. Are active and healthy, with positive physical and mental wellbeing**
- 2. Are achieving full potential in all areas of learning and development**
- 3. Are safe and protected from harm**
- 4. Have economic security and opportunity**
- 5. Are connected, respected and contributing to their world**

## Background to Children and Young People's Services Committees

### Children and Young People's Services Committees in Ireland

The Office of the Minister for Children and Youth Affairs (OMCYA), now the Department of Children, Equality, Disability, Integration and Youth, established the Children and Young People's Services Committees (formerly Children's Services Committees) in 2007 with the purpose of improving outcomes for children and families at local and community level. Since then, CYPSC have increased incrementally in number and are a key structure identified by Government to plan and co-ordinate services for children and young people, aged 0 – 24 years, in every county in Ireland.

CYPSC bring a diverse group of agencies across the statutory, community and voluntary sectors in local county areas together to engage in joint planning of services for children and young people. All major organisations and agencies working locally on behalf of children and young people are represented. These committees work to improve the lives of children, young people and families at local and community level through collaborative planning and improved service delivery.

*Better Outcomes, Brighter Futures: the National Policy Framework for Children and Young People 2014 – 2020* underscores the necessity of interagency working and tasks Children and Young People's Services Committees with a key role in this regard.

### Children and Young People's Services Committee in Roscommon

Roscommon Children and Young People's Services Committee was established by Tusla, Child and Family Agency, under the auspices of the Department of Children and Youth Affairs in 2014 as part of the fourth phase of the national roll-out of CYPSC. A Children and Young People's Services Committee Co-ordinator took up post in January 2014 and in 2015 a researcher was appointed to support the work of the Committee on a part-time basis. The Terms of Reference of the Roscommon Children and Young People's Services Committee are presented in Appendix 2.

Roscommon CYPSC developed, implemented and reviewed a Children and Young People's Plan for the period 2017 – 2019. This is the county's second plan.

## Who we are

The membership of Roscommon Children and Young People's Services Committee is as follows:

<b>Chair:</b> Tusla Child and Family Agency	John Donnellan
<b>Deputy Chair:</b> Roscommon County Council	Vacant
Health Service Executive	Jan Flanagan
Galway and Roscommon Education and Training Board	Dónal Walsh
Irish Primary Principals Network	Arthur Geraghty
National Association of Principals and Deputy Principals	Kevin Scollan
An Garda Síochána	Fergal O'Donnell
Roscommon County Childcare Committee	Irene Cafferky
Probation Service	Alma Gavin
Roscommon Leader Partnership	Martina Earley
Tusla Child and Family Agency	Bridget Mc Greal
Health Service Executive	Dr. Philip Tyndall
Health Service Executive	Mary Owens
Health Service Executive	Eamon Hannan
Tusla Child and Family Agency	Deirdre Malone
Tusla Child and Family Agency	Michelle Moran
Foroige	Dick O'Donovan
Family Resource Centres	Louise Moran
Roscommon Youth Service	Gary Nugent
Jigsaw Roscommon	Vinnie Flannery
Athlone Institute of Technology	Niall Naughton
Western Regional Drug and Alcohol Taskforce	Michéal Durcan
National Education Psychology Service	Michelle Mc Carthy Severs

## Key Linkages and Relationships

National governance structures for CYPSC are currently under review as part of the review of *Better Outcomes Brighter Futures 2014 – 2020*.

As well as having its own structure and substructure, Roscommon CYPSC is also represented by the CYPSC coordinator on the following fora in the County and region:

Roscommon Comhairle na nOg Steering Committee	Roscommon LCDC Health and Wellbeing Subgroup
Roscommon Community Response Forum	Planet Youth Roscommon Steering Committee
Planet Youth Communications Committee	Planet Youth Regional Committee
West Be Well Regional Wellbeing Group	Migrant Strategy Oversight Group
Roscommon Local Music Education Partnership	Roscommon Leader Partnership Board
Western Region Drug and Alcohol Taskforce Board	

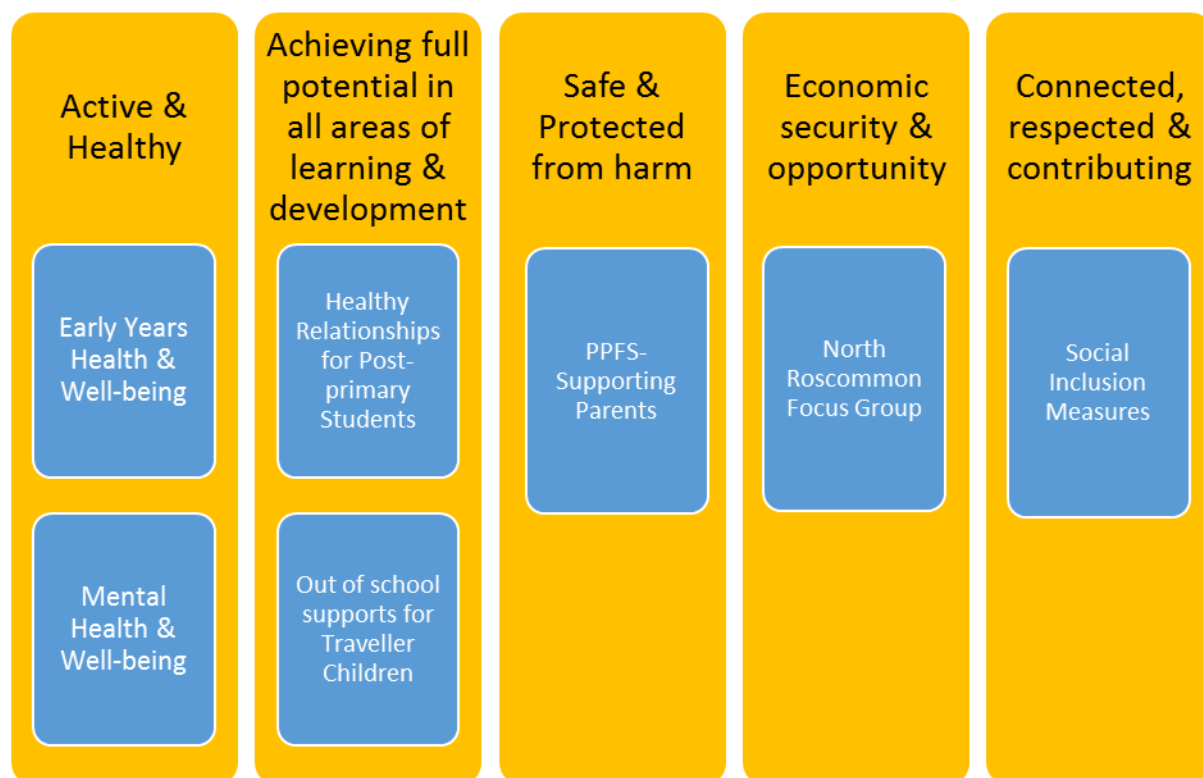
## Structure of Roscommon Children and Young People's Services Committee 2022 – 2024

Sub-groups will support the implementation of the actions in this plan. Membership of the sub-groups will comprise nominees from relevant Roscommon CYPSC member organisations. Sub-group Chairs will be members of Roscommon CYPSC and will act as a conduit between each sub-group and the committee. In addition to the sub-groups, a Healthy Ireland Oversight Group will oversee delivery of Roscommon CYPSC's Healthy Ireland funded programme of work as agreed with the Department of Health.

Roscommon Early Years Subgroup will continue to deliver actions set out in the Roscommon Early Years Health and Wellbeing Plan 2016-2020. This committee will progress the national outcome relating to children being healthy and active while maintaining a specific focus on the 0 – 3 years cohort. In line with *CYPSC: Shared Vision, Next Steps 2019-2024* the Prevention, Partnership and Family Support (PPFS) Steering Committee will act as a standing sub-group advancing the national outcome that children are safe and protected from harm. This sub-group will continue to support the work of local Child and Family Support Networks throughout the county. The work of the Social Inclusion Subgroup will be placed under the connected and respected outcome and will have a number of aims. A table of proposed subgroups is provided overleaf.



## Proposed Structure of Roscommon CYPSC Subgroups



## Review of Previous Plan

In January 2020, a review of all actions associated with the Roscommon Children and Young People's Plan 2017-2019 was undertaken. This was followed by two sessions for CYPSC members, facilitated by an external consultant, to assist with the development of a new CYPP. The audit of actions demonstrated that 25 of the 27 actions contained in the plan were completed (19) or in progress (6).




Presented here is the status of actions in the Roscommon Children and Young People's Plan 2017 – 2019 by priority area.

Priority Area	Objective(s)	Indicators	Activities	Timeframe	Status *
Healthy and Active 0 – 3 year olds	To agree Interagency Plan for progressing the health and wellbeing of 0 – 3 year olds in the county	Publication of a health and wellbeing plan for 0 – 3 years olds in Roscommon	Form a Working Group and undertake consultation  Compile a plan; agree with stakeholders	Mid 2018	
Introduction of the Smoke Free Homes Project in County Roscommon	To increase awareness of the impact of second-hand smoke on health, with a particular focus on pregnant women and children	Reduction of Smokers in County Roscommon	Recruitment of a Smoke Free Homes Project Worker  Design of Information Leaflets for the Project	Q 1 2019	
Parental Mental Health and its Impact on Children	To reduce the negative impact of parental mental illness on children	Number of children affected by parental mental illness accessing support services	Deliver a Family Talk programme that provides age-appropriate supports to children of parents who are receiving treatment for mental disorders	Ongoing	
	That all parents whose mental illness is impacting upon children have an appropriate care plan in place	Number of parents (whose mental illness is impacting upon children) who have an appropriate care plan in place	To design and introduce working protocols to enable an holistic/family level response where children present with mental health difficulties that are being caused or exacerbated by parental mental illness	Ongoing	
		Number of training programmes delivered to practitioners	Deliver training programme to practitioners working with children affected by parental mental illness	End 2018	
Supporting Transition of Preschool Children to Primary School	To support children transitioning from pre-school to primary school	Number of children supported with Transition Tool	Develop and pilot a transitions booklet  Distribute booklet and guidance to all pre-schools in the County	End Q1 2017  End Q2 2017	
Keeping Children Safe Online	To provide supports for staff and parents to keep children safe online	Percentage of staff and parents who have attended internet safety seminars and events	To deliver an internet safety seminar for the Area  To design a parenting programme on the topic of internet safety	End 2017  End 2018	
	Percentage of parents attending Parenting Programmes with an Internet Safety element	That 100% of parents attending parenting courses in the county be offered a module on internet safety	Devise, pilot and roll-out a module that can be offered as a supplementary element for parents attending parenting programmes	Ongoing	
Impact of Domestic Violence on	To increase children's understanding of feeling safe and to	Number of trainers trained in evidence-based	8 staff are trained in the Helping Hands programme across the county	Ongoing	

Priority Area	Objective(s)	Indicators	Activities	Timeframe	Status *
Children	promote behaviours which will contribute to a safe environment	programme (Helping Hands)	That groups for children who have experienced conflict in the home are running		
Prevention Partnership and Family Support	To provide family support services across the county	Number of referrals to PPFS	That every child and family referred to PPFS receives a quality service appropriate to their need	Ongoing	
	To improve coordination and collaboration among family support service providers	Number of service providers contributing to the PPFS Sub Group  Number of Child and Family Networks established and maintained	That every relevant service contributes to the PPFS Sub Group  That 2 Child and Family Networks are established and maintained	End 2017  End 2017	
	To implement the Meitheal National Practice Model	Number of practitioners who received Meitheal training  Number of Meitheals established	That every practitioner receives Meitheal training	Ongoing	
Supporting Parents	To promote evidence-based parenting programmes to all parents across the county	Number of parenting courses delivered  Geographical spread of parenting courses delivered	That no parent would have to wait for more than 6 months to access a place on a suitable parenting course  That at least one parenting course would be delivered in each Child and Family Network each year	Ongoing	
	To provide and maintain an online database of parent supports available in the county	Online database established	That all statutory and community & voluntary services are profiled on the website.	Ongoing	
	Number of unique visitors to database	That the website is updated on an on-going basis so that information is accurate and current	Maintain the database by updating information regularly	On-going	

Priority Area	Objective(s)	Indicators	Activities	Timeframe	Status
	To make engagement with Child Protection Conferences more positive for parents and families	The attendance rate of parents at Child Protection Conferences	To identify attendance rate of parents and to increase this rate by 10%	On-going	
	To establish a model of support for parents and siblings of children with a serious illness diagnosis	Number of families affected by a serious childhood illness diagnosis receiving support	Scope needs of parents and siblings Support pack designed and delivered to families	Ongoing	
Providing opportunities to develop employable skills outside of school	To create capacity among youth workers to run creative technology and STEM education programmes to promote creativity, critical thinking, communication and collaboration.	Number of Youth Workers trained with Techspace	To train youth workers to deliver Techspace in county	End 2017	
		Number of Techspace initiatives established	To equip Techspace initiatives across the county	End Q3 2017 End 2019	
Social Inclusion	To improve access to services and reduce the isolation experienced by children and young people in rural areas	Number of young people accessing existing rural transport initiatives	To increase the number of people accessing existing rural transport initiatives by 10%	End Q1 2019	
		Number of new transport initiatives introduced to service children and young people	Amend and expand existing transport services to reflect needs of children and young people	End 2019	
	To address emerging social inclusion needs in the County for children, young people and their families experiencing disadvantage	Identified gaps in service provision for young people in the county	Research best practice models nationally Support the development and expansion of universal youth service provision in the county Communicate merging social inclusion at local, regional and national levels	End 2019	

Priority Area	Objective(s)	Indicators	Activities	Timeframe	Status
Support and Advice Services for LGBT+ young people in Roscommon	To establish LGBT Support Services for young people in County Roscommon	LGBT+ Friendly Services in County Roscommon	To design and display an LGBT+ friendly logo  Design and deliver Awareness Raising Session  Establish LGBTI+ Support Group	Ongoing	Completed
Interagency Working and Collaboration	To facilitate information sharing among member organisations	The development of interagency protocols	That information sharing protocols are put in place where appropriate	Ongoing	Ongoing
		Attendance at CYPSC Meetings	That CYPSC member organisations attend no less than 75% of meetings	Ongoing	Ongoing
		Issue of CYPSC newsletter	That 2 issues of CYPSC Newsletter and issued per year	Ongoing	Ongoing
	To promote interagency working among statutory, community and voluntary organisations working with children and young people	Number of partnerships and collaborations	That all CYPSC member organisations undertake at least one collaborative piece of work per year	Ongoing	Completed

\*Actions Completed Actions Ongoing Actions Not Completed 

The review demonstrates that the only actions not completed related to rural transport issues for young people. Two presentations on rural transport services were provided to the Social Inclusion Measures Subgroup but attempts to pilot a rural transport initiative for children and young people were not successful. Members of the Social Inclusion Subgroup have agreed to continue efforts to have an ongoing advocacy role for rural transport for children, young people and their families in this plan.

Committee members have identified a number of key achievements of Roscommon CYPSC including:

- a) A commitment to CYPSC and to collaborative working by those who attend meetings, leading to the strengthening of interagency collaboration.
- b) A constructive atmosphere where members contribute well.
- c) Informative presentations at meetings and on-line meetings have facilitated attendance.
- d) CYPSC provides an important forum to get to know other services and provides an insight into how they operate, bringing together statutory and community sector organisations which is very beneficial.
- e) Issues have come to light through meetings, sub-groups, presentations and the gap analysis process. As a result, synergies have been identified, services enhanced and complementarity strengthened. Examples are provided in terms of the enhanced focus on supports related to the early years and mental health and wellbeing, with families benefiting from better service information and events related to health and wellbeing.
- f) The delivery of new services for children, young people and their families in the County, such as mental health supports under the Early Years Health and Well-being Subgroup, and internet safety supports for parents under the Internet Safety Subgroup.
- g) The development of new resources to help share information such as the County Roscommon Guidelines for Mental Health Support Services for children and adults, which provide clear information on services in the county, for families and services.
- h) Roscommon CYPSC has supported the development of the School Refusal and Domestic Abuse packs in the County, which have provided clear pathways for children, young people and families affected by these issues in the county. Both resources have been very well received nationally and adapted by a number of counties or administrative areas.
- i) Working Groups can be flexible and responsive to emerging needs. Examples include responses to issues in the North Roscommon area, the Roma and Slovakian population of the County and Youth Mental Health arising from pandemic restrictions.
- j) CYPSC has played a key role in developing responses to Covid 19 in the County, by participating in the Health and Wellbeing LCDC Subgroup and the Roscommon County Council led Covid

Community Response Forum.

- k) CYPSC provides good oversight with senior staff represented in CYPSC – decision making is important.
- l) The broad remit of CYPSC is very important and facilitates stakeholders to look at emerging issues, such as school attendance.
- m) The recent membership of a student representative from Athlone Institute of Technology is very welcome and a positive development regarding young people’s representation.
- n) Recognition of the work of Roscommon CYPSC in hearing the voices of young children, which in turn influenced the development of the Early Years Health and Wellbeing Plan, and presentations of this work in Europe. These presentations were made by the CYPSC coordinator and researcher at a Eurochild conference in Croatia in 2018<sup>1</sup> and a We Act Together conference in Holland in 2019. This work was also included in a European Toolkit entitled *“Towards Integrated Early Childhood Systems – Building the Foundations”*<sup>2</sup>
- o) Acknowledgement of the support provided for evidence informed practice and evaluation of projects by the CYPSC researcher as an important resource.

A number of challenges were also identified:

**a) Membership:**

- Significant gaps in membership, for example, Roscommon County Council, which should hold the position of Deputy Chair of CYPSC
- Absence of the voice of some minority groups, such as Travellers, people with disabilities, new communities and refugees.
- Challenges in ensuring that the right people from the right services participate
- Hearing the voice of young people, and engaging with young people in a meaningful way

Actions related to these challenges have been identified and agreed for 2022.

**b) Funding**

- Funding for actions is only short-term in nature, and varies each year, making it difficult to plan.

**c) Raising Issues Locally and Nationally**

- Services should bring issues to the CYPSC before they have reached crisis level. Also, it is difficult to highlight local issues at a national level if these issues are a result of national policy implementation.

---

<sup>1</sup> This presentation is available through the following link:

<https://www.cypsc.ie/fileupload/Documents/Resources/Roscommon/EurochildpresentationIreland.ppt>

<sup>2</sup> This toolkit is available through the following link:

[https://www.cypsc.ie/fileupload/Documents/Resources/Roscommon/1%20%20INTESYS%20Toolkit\\_complete%20version%20\(2\).pdf](https://www.cypsc.ie/fileupload/Documents/Resources/Roscommon/1%20%20INTESYS%20Toolkit_complete%20version%20(2).pdf)



## How the Children and Young People’s Plan was developed

The Roscommon Children and Young People’s Plan has been informed by a range of consultations with children, young people and their families, desk research and statistical profiling. Details of this work is outlined in table format below:

Consultations with Young People			
Where	Process and Year	Stakeholders Consulted	Emerging Issues/ Outputs
County	Planet Youth Survey undertaken 2020 <sup>3</sup>	586 15-16 year olds in Transition Year	Challenges related to sleep, screentime, mental health and substance misuse for teens and their parents
County	Undertaken at Roscommon Comhairle na nOg AGM 2021	58 young people	Challenges related to mental health and amenities for young people in Roscommon
Roscommon Town	Undertaken in 2020 by Roscommon Town Team and Foroige	45 young people Age: 12 – 18 yrs	Social Media issues for young people
County	Undertaken in 2019 by Perez-Goodbody for GRETB & CYPSC <sup>4</sup>	Focus Groups in Castlerea, Ballaghaderreen & Roscommon Town 30 survey responses from young people	Greater number of Youth Groups; Meeting more frequently Broader range of activities including dance, outdoor activities, trips and excursions Better facilities and equipment (ref to groups being cancelled due to water/electricity outs More groups for extended age groups Involve More Refugees
County	Consultations by Early Years Practitioners for Ombudsman for Children’s Office on United Nations Convention of the Rights of the Child	Online focus groups in three early years settings and Ballaghaderreen Parent and Toddler Group.	Awaiting publication of report by Ombudsman for Children Office in Quarter 3 2022.

<sup>3</sup> This report is available through the following link:

[https://www.cypsc.ie/fileupload/Documents/Resources/Roscommon/Roscommon2020\\_PlanetYouth\\_Report.pdf](https://www.cypsc.ie/fileupload/Documents/Resources/Roscommon/Roscommon2020_PlanetYouth_Report.pdf)

<sup>4</sup> Perez-Goodbody, R. (2019) *Evidence Baseline Report on Children and Young People in Galway and Roscommon: A Needs-Analysis to inform Youth Work Provision*. Galway: GRETB.

Consultations with Parents			
Where	Process and Year	Stakeholders Consulted	Priorities Emerging
County	Consultations with Roma/Slovakian Parents living in Roscommon and Ballaghaderreen	Roma/Slovakian Parents	Housing and overcrowded accommodation Lack of Translation and Interpretive Services Challenges with Social Welfare processes Lack of dedicated supports for this population in the County
Consultations with Youth Services			
Where	What	Notes	Priorities Emerging
Roscommon & Galway	Consultation Event with Youth Service Managers and Youth Workers Undertaken in 2019 by Perez-Goodbody for Galway Roscommon Education and Training Board and CYPSC	5 Youth Service Managers 21 Youth Workers	Lack of services for children under 10yrs (pre GRETB remit) Transport in Rural areas Infrastructure in Geographical Areas Need for more than one staff per service (to enable work) Increased access to facilities and equipment of other services
Consultations with CYPSC Members			
Where	What	Notes	Priorities Emerging
2020	Review of Actions of CYPP 2017 -2019	CYPSC Co-ordinator & CYPSC Members	Audit of Actions complete
2021	Two facilitated planning sessions with independent facilitator	Independent Facilitator CYPSC Members CYPSC Co-ordinator	SWOT Analysis of Roscommon CYPSC Agreement to form Planning Subgroup to develop Plan
Desk Research and Statistical Profiling			
Where	What	Notes	Priorities Emerging
2021	Statistical Profile of Roscommon	CYPSC Co-ordinator CYPSC Researcher Members of Planning Group	Up-to-date socio-economic profile presenting relevant data from reliable sources including the 2016 census

## Section 2: Socio-Demographic Profile of Roscommon

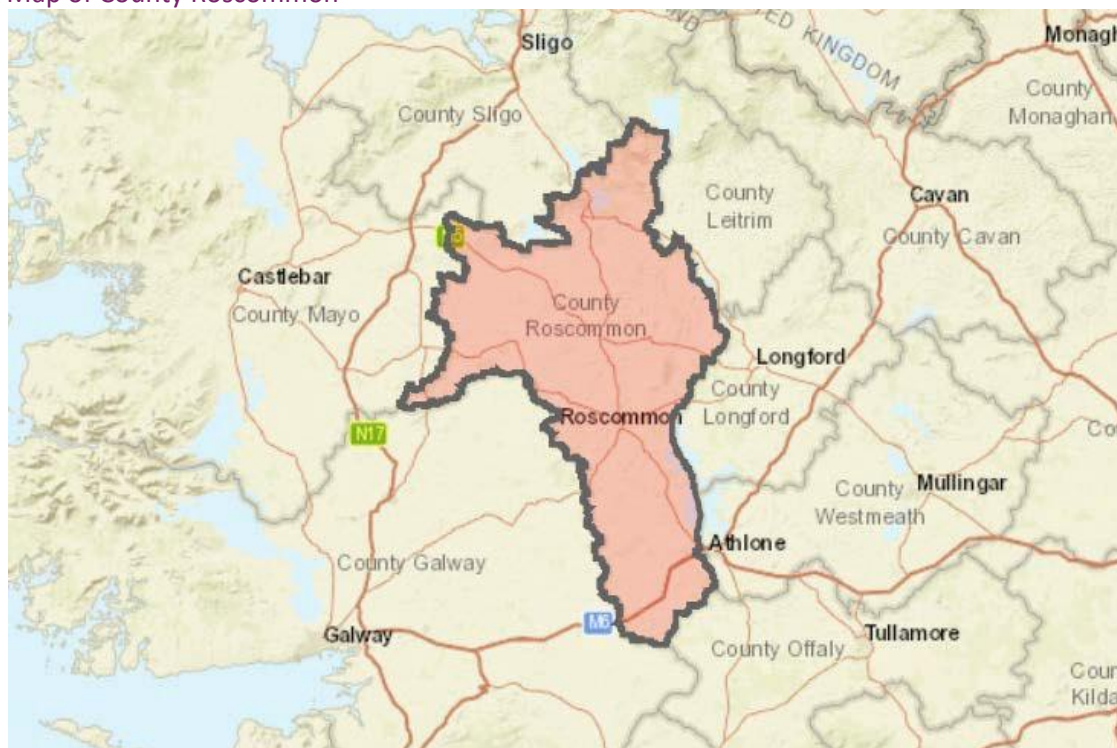
This socio-demographic profile of Roscommon County areas relies heavily on data gathered during the 2016 census, and unless otherwise stated, all figures presented below have been taken from that source. The profile also draws upon the *Evidence Baseline Report on Children and Young People in Galway and Roscommon: A Needs-Analysis to inform Youth Work Provision* compiled by the Galway Roscommon Education and Training Board in 2019.

Indicator	Source	Roscommon	State
<b>Total Population of Roscommon</b>	Central Statistics Office: Census 2016	64,544	5,011,500
<b>Child and youth population 2016</b> (aged 0 – 24yrs)	Central Statistics Office: Census 2016	20,419 (31.6% of total pop.)	1,583,004 (33.2% of total pop.)
<b>Child population 2016</b> (aged 0 – 17yrs)	Central Statistics Office: Census 2016	16,305 (25.2% of total pop.)	119,0502 (25% of total pop.)
<b>Young adult population 2016</b> (aged 18-24yrs)	Central Statistics Office: Census 2016	4,114 (6.4% of total pop.)	392,502 (8.2% of total pol.)
<b>Infant mortality 2015</b> The number of deaths among infants under 1 year per 1,000 live births	Central Statistics Office: StatBank VSA 94	4 (Infant Mortality Rate 5.2)	225 (Infant Mortality Rate 3.4)
<b>Travellers 2016</b> Traveller child and youth population (aged 0 – 24yrs)	Central Statistics Office: StatBank E8001	309 (1.51% of total pop. of children and young people)	18,018 (1.14% of total pop. of children and young people)
<b>Non-Irish nationals 2016</b> Non-Irish nationals (aged 0 – 24yrs)	Central Statistics Office: StatBank E7003	1,891 (9.3% of total pop. of children and young people)	155,976 (9.8% of total pop. of children and young people)
<b>Ethnic Background 2016</b> Ethnic background other than White Irish and Irish Traveller (aged 0 – 24yrs)	Central Statistics Office: StatBank E8001	2,514 (12.3% of total pop. of children and young people)	228,960 (14.5% of total pop. of children and young people)
<b>Family structure 2011</b> Children under 18 yrs who live in family household units with only one parent or primary care-giver resident	DCYA: State of the Nation's Children 2016	2,080 (13.4% of total pop. of children aged under 18 years)	202,444 (18.3% of total pop. of children aged under 18 years)
<b>Parental education level 2011</b> Children under 18 whose mother has attained (a) primary/no formal (b) lower secondary, (c) upper secondary or (d) third-level education	DCYA: State of the Nation's Children 2016	Primary / no formal: 500	Primary / no formal: 48,048
		Lower secondary: 1,582	Lower secondary: 141,329
		Upper secondary: 6,634	Upper secondary: 416,407
		Third-level: 5,303	Third-level: 364,299

## County Profile

County Roscommon is one of five counties in the province of Connacht and has borders with Galway, Mayo, Sligo, Leitrim, Longford, Westmeath and Offaly. It is the only county in Connacht that does not have a sea shore and Roscommon town is the main County town. Roscommon is the third most rural county in Ireland with 73.2 % of the population living in rural areas. The main centres of population in the County are Roscommon Town (population of 5,693), Castlerea (population of 1,985), Ballaghadeereen (population of 1,822) and Boyle (population of 1,459).

Map of County Roscommon



## Population

During the period 2011 to 2016, the population of County Roscommon grew by 479 people to 64,544 people. At 0.7%, the percentage growth during this period was significantly lower than the national figure of 3.8%. Within the county, Athlone LEA has seen the most consistent population growth over the past three intercensal periods.

Table 1: Population and Population Change 2006 to 2016

	Total Population 2006	Population Change 2002 - 2006	Total Population 2011	Population Change 2006 - 2011	Total Population 2016	Population Change 2011 - 2016
Athlone (R) LEA	17,188	6.9	19,486	13.3	19,979	2.5
Roscommon LEA	21,106	4.5	22,867	8.3	22,734	-0.5
Boyle LEA	20,474	7.0	21,712	6.0	21,831	0.5
Co. Roscommon	58,768	6.1	64,065	9.0	64,544	0.7
State	4,239,318	5.6	4,588,252	8.2	4,761,865	3.8

Source: Central Statistics Office, 2017

Table 2 demonstrates that Roscommon is largely rural in character. Less than 27% of people living in the county are living in towns. This is well below the corresponding national figure of almost 63%.

**Table 2: Population Percentage in Aggregate Town Areas and Aggregate Rural Areas, 2016**

	Total Population	Aggregate Population Town Areas	Aggregate Population Rural Areas	% of population in Aggregate Town Area	% of population in Aggregate Rural Area
Roscommon	64544	17300	47244	26.8	73.2
State	4761865	2985781	1776084	62.7	37.3

*Source: Central Statistics Office, 2017*

The age profile of the County is outlined in Table 3 which shows that the percentage of people aged 24 years or under at 31.6% is slightly below the national figure of 33.2%.

**Table 3: Child Population, 2016**

	0 - 4 years	5 - 9 years	10 - 14 years	15 - 19 years	20 - 24 years	Total Population 0 - 24 years	25 years and over	Total population all ages
Roscommon	4360	4766	4536	4008	2749	20419	44125	64544
State	331515	355561	319476	302816	273636	1583004	3178861	4761865

*Source: Central Statistics Office, 2017*

### Age Dependency Rate within County Roscommon

The Age Dependency Rate reflects the number of people of an age typically not in the labour force (under 15 years and over 65 years) as a proportion of those of an age typically in the labour force (aged between 15 years and 64 years).

**Table 4: Age Dependency Rate, 2006 - 2016**

	Age Dependency Rate 2006 (%)	Age Dependency Rate 2011 (%)	Age Dependency Rate 2016 (%)
Athlone (R) LEA	34.7	35.1	36.3
Roscommon LEA	35.7	36.7	38.3
Boyle LEA	35.2	35.7	38.7
Co. Roscommon	35.2	35.9	37.8
State	31.4	33.0	34.5

*Source: Central Statistics Office, 2017*

Table 4 demonstrates that the Age Dependency Rate in each LEA within Roscommon has increased during each of the last three intercensal periods. Each LEA in Roscommon also has a significantly higher Age Dependency Rate than the national average.

## Marital / Civil Status of Population within County Roscommon

In April 2016, 50% of people aged 15 years and over in the state were in a first marriage. Figures for County Roscommon, 49.5%, are broadly in line with the national average. Of all people aged 15 years and over in the state, 11.1% were separated, divorced or widowed in 2016. The corresponding figure for County Roscommon was 12.6%.

Table 5: Detailed Marital Status of Population aged 15 years, 2016

	Single	Married (first marriage)	Re-married	Registered Same-Sex Civil Partnership	Separated	Divorced	Widowed	Total aged 15 years and over
Roscommon	18328	25192	921	33	1637	1380	3391	50882
State	1544862	1726196	61729	4226	118178	103895	196227	3755313

Source: Central Statistics Office, 2017

## Lone Parents

Table 6: Percentage of Families headed by Lone Parents by LEA, 2006 - 2016

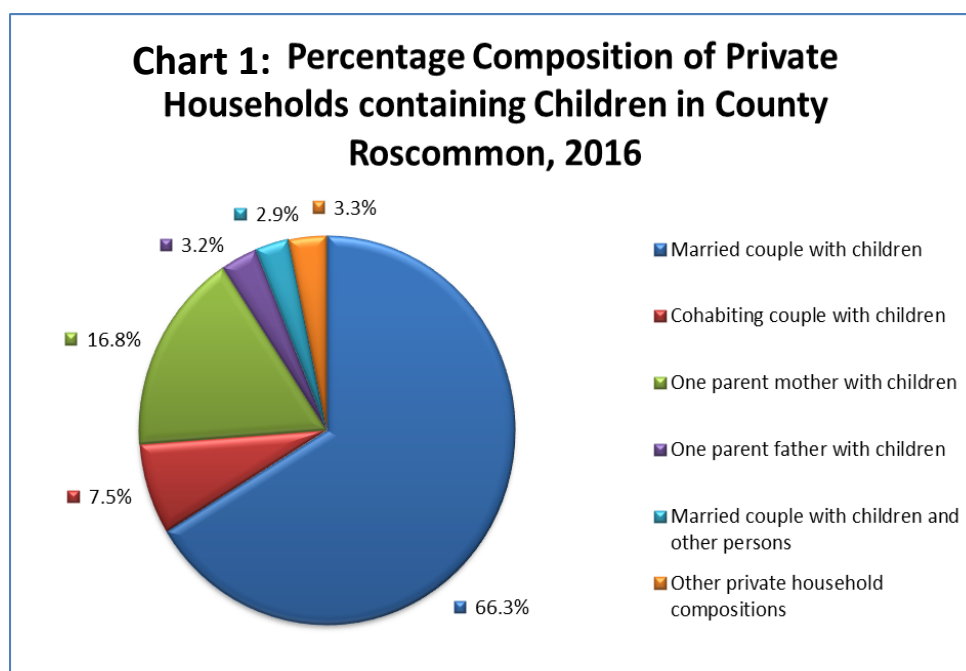
	Lone Parents 2006 %	Lone Parents 2011 %	Lone Parents 2016 %
Athlone (R) LEA	10.9	13.1	13.2
Roscommon LEA	14.8	17.6	16.0
Boyle LEA	15.7	17.6	17.8
Co. Roscommon	14.0	16.2	15.8
State	20.9	21.0	19.9

Source: Central Statistics Office, 2017

The percentage of families headed by a Lone Parent in County Roscommon, 15.5%, is notably lower than the national figure of 19.9%. The lower than average percentage of families headed by a Lone Parent is seen in each of the three LEAs but is particularly evident in Athlone (R) LEA where just 13.2% of families were headed by a Lone Parent in 2016. At a county level, the percentage of families headed by a Lone Parent has decreased in the intercensal period 2011 to 2016. This reflects a national trend evident during this time.

## Private Households containing Children in County Roscommon 2016

Chart 1 presents the types of private household with children as a percentage of the total number of households with children.



Source: Central Statistics Office, 2017

The percentage of private households comprising a mother with children in County Roscommon, 16.8%, is below the national figure of 18%. At 3.2%, the proportion of private households comprising a father and children in County Roscommon is above the corresponding national figure of 2.9%.

## Health

### Infant Mortality Rate

In 2020, Roscommon County experienced a mortality rate of 5.3 deaths per 1,000 of those aged under 1 year. This is above the national average of 2.7 deaths per thousand. Given that the numbers under consideration are small, the Infant Mortality Rate can be subject to considerable fluctuation<sup>5</sup>.

### Babies born weighing less than 2,500 grams.

In 2016, 4.0 % of babies born to mothers resident in Roscommon weighed less than 2,500 grams. This compares positively to the national average of 5.9%<sup>6</sup>.

### Immunisation Uptake

The latest available data relating immunisation uptake shows Roscommon to have a higher than average uptake rate. In 2020, the rate of immunisation for MMR1 (one dose of vaccine against measles, mumps and rubella) at 24 months in Roscommon was 93.7%. The corresponding figure at national level was 91.8%. In 2020, the rate of immunisation for MENC3 (three doses of vaccine

5

Source <https://outcomes4children.tusla.ie/safe/>

against meningococcal group C) in Roscommon was 96%. The corresponding figure at national level was 86%.<sup>6</sup>

### Breastfeeding

The rate of exclusive breastfeeding on discharge from hospital in Roscommon is 42.8%. This figure is significantly lower than the corresponding national figure of 47.1%. However, the rate of combined breast and artificial feeding, 15.5%, is above the national average of 13.3%. Consequently, the rate of exclusively artificial feeding in the county, 41.8%, is slightly higher than the national average of 39.6%.<sup>6</sup>

### Disability

In 2015, children were more likely to have a physical or sensory disability in Roscommon, at 10.4% than their counterparts nationally (5.4%). Rates of children with an intellectual disability at 10.5% are also significantly higher than the national average of 7.9%.<sup>6</sup>

### Self-Harm

In 2019, 803 residents of CHO 2 (Galway, Mayo and Roscommon), 348 male and 455 female, presented to hospital with a total of 984 self-harm presentations. Taking into account the population, the rate of persons presenting to hospital following an act of self-harm was 168 and 217 per 100,000 for males and females respectively. Nationally, the rate of self-harm for males and females was 187 and 226 per 100,000 respectively. In Roscommon these included 39 males and 47 females. Figures related to self-harm at county level are not disaggregated by age group. However, CHO2 figures indicate that the highest rate of self-harm for males is among 25-34 year olds, (28%) while the peak rate for females is among those under 20 years (33%). Approximately one in four (26%; 257) self-harm presentations involved individuals younger than 20 years of age.<sup>7</sup>

### Educational Attainment

In 2016, 15.1% of people, aged 15 and over, in County Roscommon had completed their education with a primary level education only. This contrasts with a figure of 13% for the nation as a whole. Of the three LEAs, Athlone (R) has a lower than average proportion, 11.9%, of people with primary education only.

The proportion of people having primary education only has fallen by more than a quarter, from 21.7% to 15.1%, in the period 2006 – 2016.

Table 7: Proportion (aged 15 years +) with Primary Education only, 2006 - 2016

	Primary Education Only 2006 %	Primary Education Only 2011 %	Primary Education Only 2016 %
Athlone (R) LEA	18.3	14.6	11.9
Roscommon LEA	24.0	19.9	16.8
Boyle LEA	22.3	18.4	16.3
Co. Roscommon	21.7	17.8	15.1
State	18.6	15.6	13.0

<sup>7</sup> Source National Self-Harm Registry Ireland



Source: Central Statistics Office, 2017

Table 8 shows that the proportion of people with a third level education in all three LEAs is lower than the national average. With 34.4% of people having a third level education, Athlone (R) LEA is significantly closer to the national figure of 35.9% than either Roscommon LEA, 27.2%, or Boyle LEA, 27.6%. This may reflect the LEA's proximity to Athlone IT.

It is worth noting that the proportion of people with third level education is increasing across County Roscommon. While the national figure increased by 5.3% during the period 2006 to 2016, the corresponding increase in County Roscommon, at 6%, was higher.

Table 8: Proportion (aged years +) with Third Level, 2006 - 2016

	Third Level 2006 %	Third Level 2011 %	Third Level 2016 %
Athlone (R) LEA	27.4	29.0	34.4
Roscommon LEA	21.8	22.8	27.2
Boyle LEA	22.3	23.3	27.6
Co. Roscommon	23.6	24.9	29.6
State	30.6	30.8	35.9

Source: Central Statistics Office, 2017

### School Absence Rates

Figures of children who had missed more than twenty days of primary school at 9.3% were slightly lower than the national average of 11.3%. However, corresponding secondary school figures at 17.6% were slightly higher than the national average of 15.8%<sup>8</sup>.

### School Retention Rates

The retention rate to Leaving Certificate level for those who entered second level education in 2012 and completed their leaving certificate in 2017 or 2018 is in line with the national average of 91%, while the retention rate for Junior Certificate at 96% is also in line with the national rate of 97%.

While the retention rate to Leaving Certificate for children from the Traveller Community is not available at county level, the *National Traveller and Roma Inclusion Strategy* states that only 13% of Traveller children complete second level education (p.11)<sup>9</sup>.

### Safe and Protected from Harm

County Roscommon is part of the Galway Roscommon Tusla Child and Family Agency Area. During 2021, a total of 918 referrals were made to Roscommon Social Work services relating to child welfare, child abuse or neglect. A breakdown of these referrals by primary reported concern is provided in the following table:

<sup>8</sup> Source Tusla School Attendance Data

<sup>9</sup> Source Department of Justice and Equality (2017) *National Traveller and Roma Inclusion Strategy*. Dublin: Department of Justice and Equality

Table 9: Referrals by Primary Reported Concern Social Work Services 2021

Referral by Primary Reported Concern	Count of Referral No
Child Welfare Concern	587
Emotional Abuse	164
Neglect	57
Physical Abuse	50
Sexual Abuse	60
<b>Total</b>	<b>918</b>

Source: Tusla Local Area Statistical Reports

Following screening or assessment by Tusla Social Work Services, the status of these referrals changed. A breakdown of categorisation following screening or assessment is provided in the following table:

Table 10 Status of Referrals following Screening or Assessment of Social Work Services 2021

2021 Referrals Roscommon	Count
Child Welfare Concern	836
Emotional Abuse	19
Neglect	16
Physical Abuse	20
Sexual Abuse	27
<b>Grand Total</b>	<b>918</b>

Source: Tusla Local Area Statistical Reports

In December 2021 there were 105 Roscommon children in care both in general fostering and relative fostering. A breakdown of these placements is provided in the following table:

Table 11: Numbers of Children in Foster Care 2021

31/12/2021 - Roscommon	Children
Foster Care General	71
Foster Care Relative	27
Other Care Placements	2
Residential General Care	4
Residential Special Care	1
<b>Total</b>	<b>105</b>

Source: Tusla Local Area Statistical Reports

In December 2021 there were 58 families open to Tusla Family Support Services in the County consisting of 163 children (Area Manager Galway Roscommon Report, 2019).

There were 49 children on the Child Protection and Notification System (CPNS) in the Galway and Roscommon Tusla Service Area at the end of Q4, 2020. The Child Protection Notification System (CPNS) records children who have been identified as being at ongoing risk of significant harm and are, or have been, subject to a Child Protection Plan.

Table 12: Numbers of children and families open to Tusla Family Services 2021

TOTAL CASES OPEN	
Total No. of Children open	163
Total No. of Families open	58

Source: Tusla Local Area Statistical Reports

The number of Meitheal processes requested in the Galway/Roscommon area is in line with the national average.

Garda Youth Diversion Projects are community-based, multi-agency, youth crime prevention initiatives. They work primarily with 12-18 year olds who have been involved in, or are at risk of becoming involved in, anti-social or criminal behaviour. The projects aim to deter crime and anti-social behaviour while promoting personal development, sense of community and improving employability prospects. Roscommon is part of the Roscommon/Longford Garda Division and in 2019, 171 referrals were made to Garda Youth Diversion Projects in the Roscommon/Longford Garda Division.

### Economic Opportunity and Security

Nationally, the proportion of people working in professional jobs has steadily increased during the period 2006 to 2016 and this trend is reflected for County Roscommon, where 33.1% of the population were working in professional jobs in 2016.

In parallel, nationally, the proportion working in semi/unskilled jobs has decreased from 19.3% in 2006 to 17.9% in 2016. In contrast to the fall in the proportion of workers working in semi/unskilled jobs that is evident at national level during this period, the proportion of semi/unskilled workers in Roscommon increased slightly from 18.2% to 18.6%.

There is a significant variance between the socio-economic profile of Athlone (R) LEA and Roscommon LEA and Boyle LEA. The proportion of professional workers in Athlone (R) LEA, 38.2%, is higher than the national average and is markedly higher than the proportion in the other two LEAs, 30.2% and 31.5%. The proportion of Semi/unskilled workers in Athlone (R) LEA, 16.2%, is lower than the national average of 17.9%, and is notably lower than the corresponding proportion in either of the other two LEAs, 20.4% and 18.6%.

Table 13: Proportion by Socio-Economic Group, 2006 - 2016

	Higher and Lower Professionals 2006 %	Higher and Lower Professionals 2011 %	Higher and Lower Professionals 2016 %	Semi-Unskilled 2006 %	Semi-Unskilled 2011 %	Semi-Unskilled 2016%
Athlone (R) LEA	37.5	36.9	38.2	15.8	15.6	16.2
Roscommon LEA	30.5	29.5	30.2	19.6	18.5	20.4
Boyle LEA	30.2	30.3	31.5	18.7	18.2	19.0
Co. Roscommon	32.5	32.1	33.1	18.2	17.5	18.6
State	32.9	34.6	36.2	19.3	18.2	17.9

Source: Central Statistics Office, 2017

## Unemployment Figures for County Roscommon

The Live Register is used to provide a monthly series of the numbers of people (with some exceptions) registering for Jobseekers Benefit (JB) or Jobseekers Allowance (JA) or for various other statutory entitlements at local offices of the Department of Social Protection.

The Live Register includes part-time workers (those who work up to three days per week), seasonal and casual workers entitled to JB and JA. Table 14 shows Live Register data for County Roscommon and the State relating to those under 25 years and 25 years and over, for April 2022.

Table 14: Persons on Live Register (Number) April 2022

	Under 25 years	25 years and over
County Roscommon	58	546
State	17,120	159,884

Source: Central Statistics Office, 2022

## Connected, Respected and Contributing

The data presented in this section relates to minority communities in County Roscommon, and presents a profile of those who speak languages other than English or Irish at home and numbers of community members from the Traveller and Roma community. Details are also presented related to the Reception and Orientation Centre in Ballaghaderreen, County Roscommon and Young Carers in the County.

### Population speaking languages other than English and Irish at home

Over 6,100 people in County Roscommon speak a language other than English or Irish at home.

Table 15: Population Usually Resident and Present in the State who Speak a Language other than English or Irish at Home by language, 2016

	All (other than English or Irish)	Polish	French	Romanian	Lithuanian	Spanish	Russian	Portuguese	Chinese
Roscommon	6,132	1,536	552	155	373	127	207	573	62
State	612,018	135,895	54,948	36,683	35,362	32,405	21,707	20,833	17,584

Source: Central Statistics Office, 2017

## Traveller Population

The number of usual residents present in the State and enumerated as Irish Travellers in Census 2016 increased by 5.1 per cent from 29,495 to 30,987. Census 2016 recorded 516 people living in Roscommon as Irish Traveller, an increase of 30.3 per cent from Census 2011.

Table 16: Traveller Population of County Roscommon

Area	Number
Roscommon	516
State	30,987

Source: Central Statistics Office, 2017

## Roma/Slovakian Population

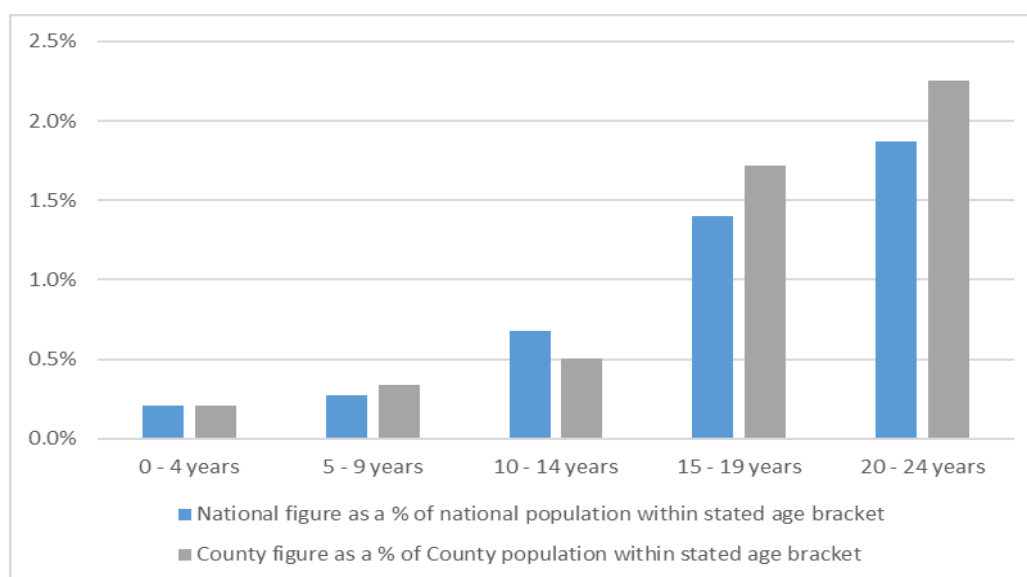
The Roscommon CYPSC supported “**Discussion document for Roscommon CYPSC on supporting the Slovakian Roma population in the county**” June 2020, is available in Appendix 3.

This study in 2020 and a GRETB consultation in 2021 revealed a minimum of 36 Slovakian and Romanian Roma households or family groups living in Roscommon Town. These family groups represent approximately 165 people, 85 of whom are aged between 10 and 24 years. This study also identified a minimum of 15 Slovakian Roma households or family groups living in Ballaghaderreen. These families represented approximately 62 people, 38 of whom are aged under 24 years.

## Young Carers

Overall, there is a slightly higher percentage of young carers (0-24 years) in County Roscommon (0.88%) than nationally (0.83%). Table 17 shows the number and percentage of young carers at each age category in a bar chart, comparing the rate for County Roscommon with the rate nationally for each age category.

Table 17: Young Carers in County Roscommon and Nationally, 2016



Source: CSO. Census 2016.

## Emergency Reception and Orientation Centre

Emergency Reception and Orientation Centres (EROC) were developed to house people arriving in Ireland through relocation and resettlement. There is an EROC in Ballaghaderreen in North Roscommon. It is a transient community with people entering and leaving regularly so the numbers are very changeable. Table 18 shows the number of children and young people who were resident in the EROC Ballaghaderreen on the date of this data being collected. Although these figures may fluctuate, they give an indication of the type of numbers that can be expected. There are no International Protection Accommodation centres in County Roscommon. There are two such centres located in Galway City.

Table 18: Number of Residents in EROC in County Roscommon May 2022

Age group/family	Number
Number of families	30
Under 5's	23
Primary school (5-12yrs)	50
Secondary school (13-18)	15

## Principal Towns in Roscommon

The county's principal towns are Roscommon town, Castlerea, Boyle, and Ballaghaderreen.

## Roscommon Settlement Area

Roscommon Town is the county town and the administrative centre in the county. In 2016, Roscommon Town Settlement Area had a population of 5,876 people. Children and young people from 0 to 24 years numbered 1962 people and, of these, 1583 were aged 0 to 18 years.

Table 19: Family Units with Children, by type of family and age of children in Roscommon Settlement Area, 2016

Age of children	Couples with children	Mothers with children	Fathers with children
<b>Number of families</b>			
All children under 15	454	88	6
All children 15 and over	193	89	24
Children both under and over 15	153	28	1
<b>Total</b>	<b>800</b>	<b>205</b>	<b>31</b>
<b>Number of children</b>			
All children under 15	875	145	7
All children 15 and over	297	125	32
Children both under and over 15	480	86	42
<b>Total</b>	<b>1,652</b>	<b>356</b>	<b>42</b>

4066 people in Roscommon Settlement Area identify having a White Irish ethnic or cultural background. 991 people identify as Other White; 115 people are Black or Black Irish, while 183 identify as Asian or Asian Irish. 32 people identified as Irish Traveller, and 440 are categorised as 'Other' or 'Not Stated'.

### Castlerea Settlement Area

In 2016, Castlerea Settlement Area had a total population of 1,992 people. Children and young people aged 0 to 24 years numbered 512 people and, of these, 415 were aged 0 to 18 years.

Table 20: Family Units with Children, by type of family and age of children in Castlerea Settlement Area, 2016

Age of children	Couples with children	Mothers with children	Fathers with children
<b>Number of families</b>			
All children under 15	102	34	3
All children 15 and over	82	54	7
Children both under and over 15	18	13	0
<b>Total</b>	<b>202</b>	<b>101</b>	<b>10</b>
<b>Number of children</b>			
All children under 15	200	57	5
All children 15 and over	122	69	11
Children both under and over 15	58	36	0
<b>Total</b>	<b>380</b>	<b>162</b>	<b>16</b>

1564 people in Castlerea identified as White Irish, while 201 identified as White Other. 36 people identified as White Irish Traveller. There were 4 people who identified as Black or Black Irish, while 69 people identified as Asian or Irish Asian. 109 people were categorised as Other or Not Stated.

### Boyle Settlement Area

In 2016, Boyle Settlement Area had a total population of 2,568. Children and young people aged 0 to 24 years numbered 626 people and, of these, 494 were aged 0 to 18 years.

Table 21: Family Units with Children, by type of family and age of children in Boyle Settlement Area, 2016

Age of children	Couples with children	Mothers with children	Fathers with children
<b>Number of families</b>			
All children under 15	146	43	4
All children 15 and over	86	41	16
Children both under and over 15	44	14	0
<b>Total</b>	<b>276</b>	<b>98</b>	<b>20</b>
<b>Number of children</b>			
All children under 15	307	51	5
All children 15 and over	115	69	22
Children both under and over 15	124	45	0
<b>Total</b>	<b>546</b>	<b>166</b>	<b>27</b>

### Ballaghaderreen Settlement Area

In 2016, Ballaghaderreen Settlement Area had a total population of 1,808 people. Children and young people aged 0 to 24 years numbered 558 people and, of these, 418 were aged 0 to 18 years.

Table 22: Family Units with Children, by type of family and age of children in Ballaghaderreen Settlement Area, 2016

Age of children	Couples with children	Mothers with children	Fathers with children
<b>Number of families</b>			
All children under 15	103	39	5
All children 15 and over	55	30	5
Children both under and over 15	36	7	0
<b>Total</b>	<b>194</b>	<b>76</b>	<b>10</b>
<b>Number of children</b>			
All children under 15	199	67	9
All children 15 and over	81	40	6
Children both under and over 15	133	21	0
<b>Total</b>	<b>546</b>	<b>128</b>	<b>15</b>



## Housing

County Roscommon figures for the average number of persons per room are in line with corresponding national figures.

**Table 23: Average Persons per Room, 2006 - 2016**

	2006	2011	2016
Athlone (R) LEA	.5	.5	.5
Roscommon LEA	.5	.5	.5
Boyle LEA	.5	.4	.4
Co. Roscommon	.5	.5	.5
State	.5	.5	.5

*Source: Central Statistics Office, 2017*

The proportion of owner-occupied households in County Roscommon is significantly higher than the national average. Where 70.3% of all households in the state were owner-occupied in 2016, the corresponding figure for County Roscommon was 78.3%.

During the period 2006 to 2016, the reduction in the proportion of owner-occupied households in County Roscommon from 85.5% to 78.3% mirrors a reduction at national level from 77.7% to 70.3%. The proportion of owner-occupied households in Athlone (R) LEA remains very high at 82.1%.

**Table 24: Proportion of Owner Occupied Households, 2006 - 2016**

	2006	2011	2016
Athlone (R) LEA	90.7	84.7	82.1
Roscommon LEA	84.1	78.1	76.9
Boyle LEA	82.0	77.4	76.2
Co. Roscommon	85.3	79.8	78.3
State	77.7	71.9	70.3

*Source: Central Statistics Office, 2017*

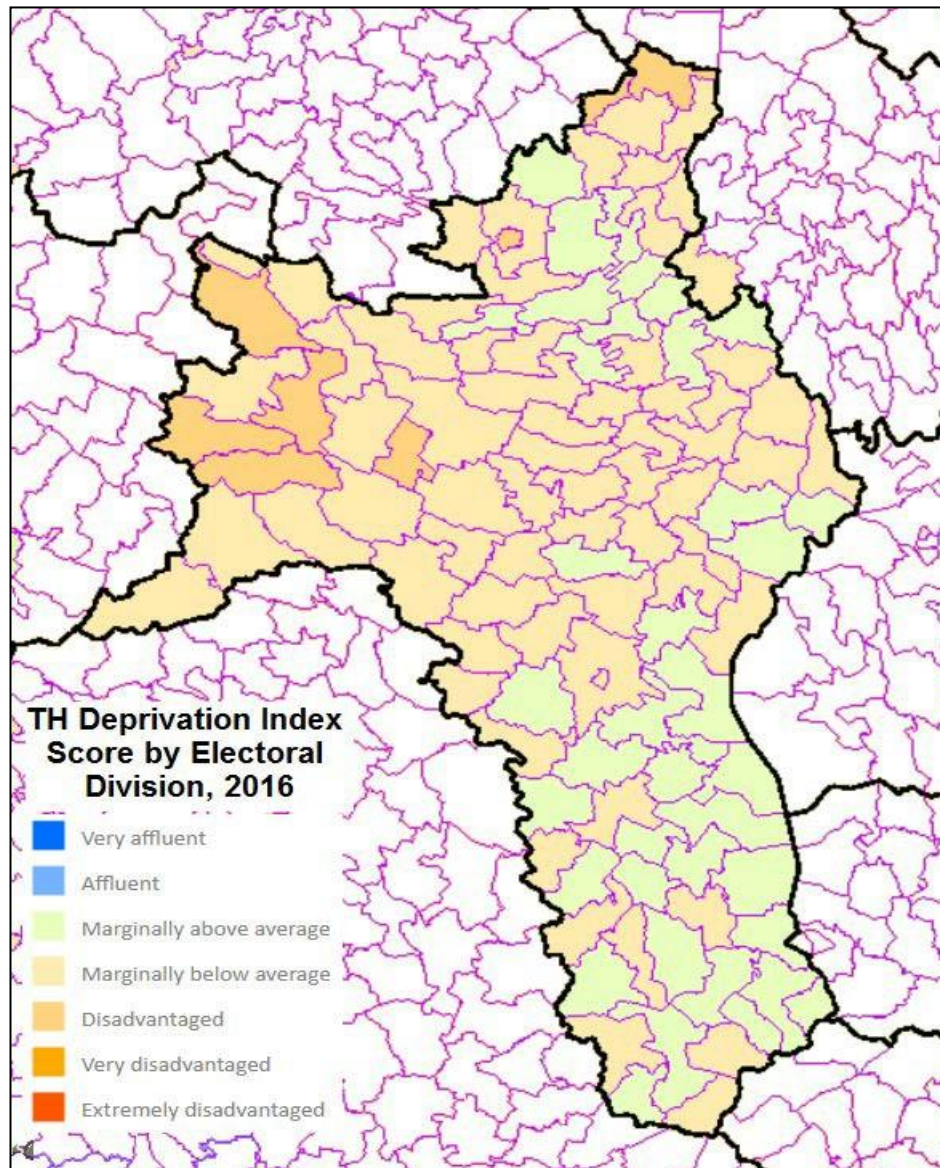
## Deprivation Index Score

In 2016, County Roscommon experienced a drop in its relative deprivation score from -2.1 in 2011 to -2.4.

Of the 108 Electoral Divisions (EDs) in County Roscommon, the majority, 71, are inclined towards deprivation, i.e. 63 are marginally below average and eight are disadvantaged. Thirty seven EDs are marginally above average. The most affluent areas are the wider environs of Boyle and Athlone, but excluding the towns themselves. Overall, the Western parts of the county are slightly more disadvantaged than their Eastern counterparts.

At a local level, the most disadvantaged EDs are Boyle Urban (-13.3), Lough Allen/Altagowlan (-13.2), Ballyfarnan (-11.5), Loughglinn (-11.2), Cloonfower (-11), Baslick (-10.9), Artagh South (-10.5) and Ballaghareen (-10). The most affluent EDs in County Roscommon are Oakport (8.3), Dromlosh (7.3) and Kiltoom (6.8). None of these are categorised as affluent on the HP Deprivation Index, rather, they are categorised as 'marginally above average'.

Map 2: Map of County Roscommon indicating relative Affluence and Deprivation at the Electoral Divisions level, 2016

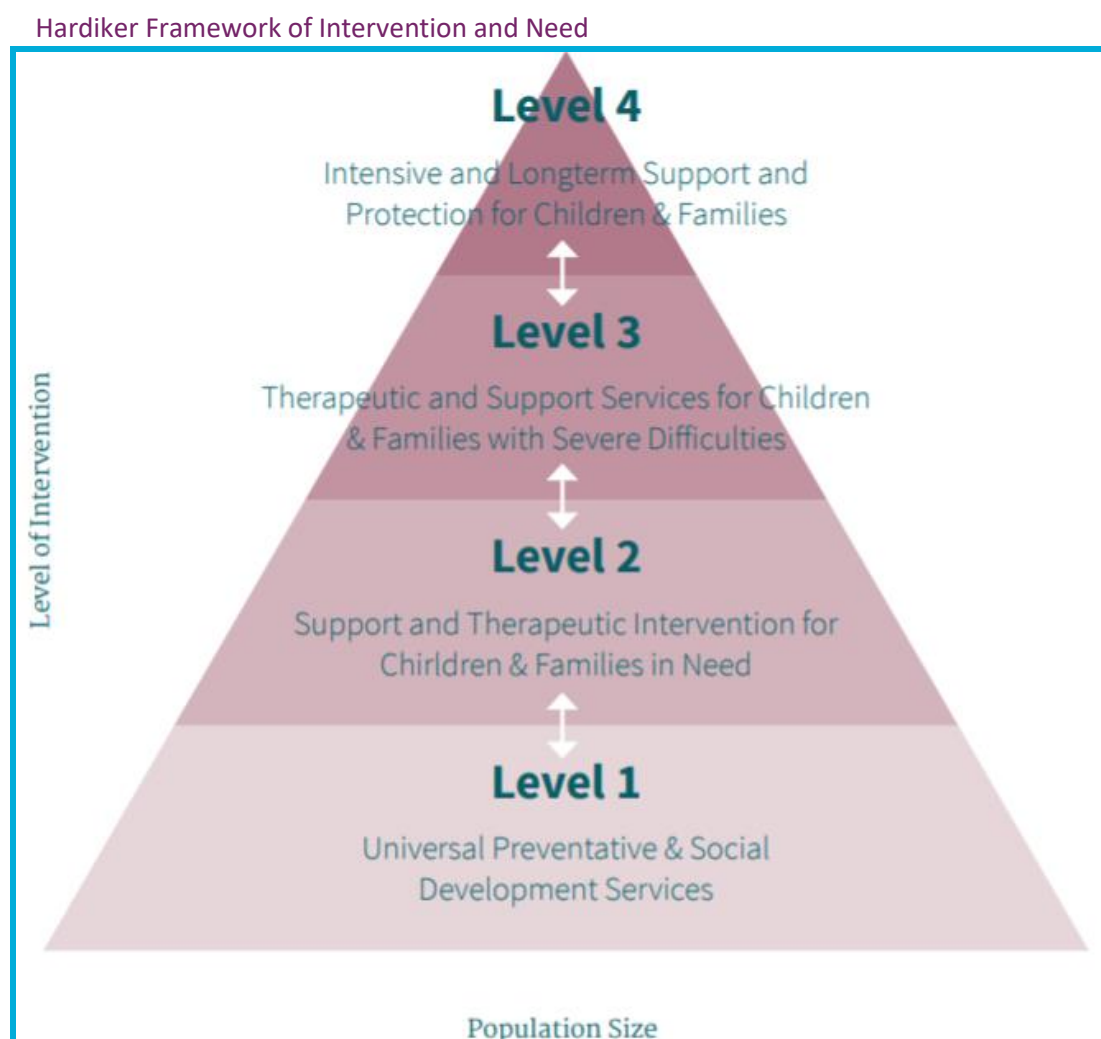


## Section 3: Overview of Services to Children and Families in Roscommon

This section provides an overview of the main services provided to children, young people and their families by Roscommon CYPSC member organisations and its working partners.

Services are categorised by theme. Organisations may be listed more than once where their services span multiple themes.

Listings are further categorised as being universal, targeted or both with reference to the Hardiker Model of levels of service provision or intervention, in response to need.<sup>10</sup>



Source: The Institute of Public Health and the Centre for Effective Services, 2016

<sup>10</sup> Hardiker, P., Exton, K. and Barker, M (1991) *Policies and practices in preventive child care*. Aldershot: Avebury

## Overview of services

Health and Social Services			
<p>The HSE provides all of Ireland's public health services in hospitals and communities across the country. Its vision is for a healthier Ireland with a high quality health service valued by all. Child and Adolescent Mental Health Service (CAMHS)</p>	Public Health Nurses (PHN's) Community and Registered General Nurses (RGN's): wide range of nursing services in the community. They are often the first point of contact for people to access a range of HSE services.	Statutory	Universal (Hardiker Level 1)
	Area Medical Officers: developmental assessments of all babies from the age of seven months and follow up of those with an identified developmental, growth or clinical concern; role in relation to the school immunisation programme; medical evaluation of suspected child abuse and neglect	Statutory	Universal (Hardiker Level 1)
	Dentistry: Including emergency services for children aged 0 - 16 years	Statutory	Universal (Hardiker Level 1)
	Community Nutrition and Dietetics Service: Dietary assessment, advice and support for children and young people.	Statutory	Targeted (Hardiker Level 2)
	Addiction Services: counselling (including addiction counselling for young people) and outreach work	Statutory	Targeted (Hardiker Level 2 & 3)
	Health Promotion Officers: Promotion in relation to key areas of physical activity, obesity, alcohol, smoking, sexual health and health inequalities are addressed across different population groups, including children	Statutory	Universal (Hardiker Level 1)
	The Urgent Care Centre in Roscommon County Hospital provides services for children of five years of age and over who present with minor injuries. There are no Accident and Emergency, Paediatric or Maternity In-patient services available in County Roscommon. Hospital services are provided in Counties Galway, Mayo, Sligo and Westmeath.	Statutory	Universal (Hardiker Level 1)
	Speech and Language Therapy: Service for children, young people and adults with speech and language difficulties including parent advice clinics	Statutory	Targeted (Hardiker Level 2)
	Disability Services: Children's disability services are for children and young people up to 18 years. Assessment of Need Service and the Early Intervention Service are focused on children aged 0-5 years. The School Age Teams Service focus on children aged 5-12 years	Statutory	Targeted (Hardiker Levels 1- 3)
	Occupational Therapy: Assessment, intervention, advice/consultation for children and young people presenting with fine and gross motor difficulties, parent advice clinics	Statutory	Targeted (Hardiker Level 2)
Community Psychology Services: Assessment and treatment services for children from birth to 18 years with mild to moderate psychological presentations, such as anxiety, grief/loss, behavioural and emotional difficulties	Statutory	Targeted (Hardiker Level 2)	

Health and Social Services			
	Resource Officer for Suicide Prevention: support for the implementation of Local Connecting for Life Action Plan; response to deaths by suspected suicide.	Statutory	Targeted (Hardiker Levels 1 -3)
	Child and Adolescent Mental Health Services: Assessment and therapeutic interventions for children and their families with a range of mental health disorders.	Statutory	Targeted (Hardiker Level 2 & 3)
	Castlereagh Mental Health Hub provides mental health supports for young people across HSE West (Galway, Mayo, Roscommon), by offering in person and online supports.	Statutory	Targeted (Hardiker Level 3 & 4)
Family Resource Centres	Four FRCs provide a range of health and wellbeing supports including breast-feeding support groups and Parent and Toddler Groups	Voluntary	Universal (Hardiker Level 1)
	Support children and families who are affected by separation or bereavement, which can include the delivery of the Rainbows programme	Voluntary	Targeted (Hardiker Level 2)
Roscommon County Council	16 x playgrounds; 2 x public swimming pools;	Statutory	Universal (Hardiker Level 1)
Roscommon Sports Partnership	Practical supports for greater physical activity of children, young people and families. Targets particularly groups likely to be excluded from participation in regular sports activities.	Statutory and Voluntary Partnership	Universal and Targeted (Hardiker Level 1 & 2)
Brothers of Charity	Services to people with an intellectual disability and their families County Roscommon. Services range from early intervention services for young children with complex needs, in partnership with the HSE and Enable Ireland, through to school-age services and a variety of programmes for adults.	Voluntary	Targeted (Hardiker Level 2,3 & 4)
Roscommon Early Intervention Service (REIS)	REIS provides services for children with complex needs from birth to six years of age. This service is run in partnership between HSE and the Brothers of Charity	Statutory and Voluntary Partnership	Targeted (Hardiker Level 2,3,& 4)
Jigsaw Roscommon	Jigsaw Roscommon provides a free and confidential support service for young people, their mental health and well-being, aged 15 – 25 living in County Roscommon.	Voluntary	Universal and Targeted (Hardiker Levels 1,2, 3)
Roscommon Leader Partnership	Roscommon LEADER Partnership facilitates and supports the delivery of Healthy Food Made Easy for families and support staff across County Roscommon.	Voluntary	Universal (Hardiker Level 1)
Western Regional Drugs Task Force	Provides support to existing services working in the field of drugs and alcohol; gathers and collates up-to-date information; works to improve the provision of drug and alcohol services.	Voluntary	Universal and Targeted (Hardiker Levels 1 & 2)
GAA Clubs	32 Clubs throughout the County offer opportunities for physical exercise, social interaction and community engagement. The GAA are also involved in initiatives such as the Alcohol and Substance Abuse Prevention Programme and the Healthy Club Project, run in partnership with the HSE and the National	Voluntary	Universal (Hardiker Level 1)

Health and Social Services			
	Office for Suicide Prevention.		
Irish Girl Guides	An organisation for girls and young women aged 5 – 26 years, which places a strong emphasis on the outdoors, environment, community responsibility and team work. In County Roscommon there are groups in Boyle, Castlerea, Roscommon and Athlone.	Voluntary	Universal (Hardiker Level 1)
Planet Youth	Planet Youth is an evidence based primary prevention model, developed in Iceland, and being implemented in the West of Ireland. It aims to reduce substance abuse rates among adolescents and supports for children, young people, parents and schools are offered via research, webinars, workshops and online websites	Community / Voluntary	Universal (Hardiker Level 1)

<b>Education</b>			
Roscommon County Council	Library Branches x 6 and one Mobile library Service that travels to schools and community projects and events across the County.	Statutory	Universal (Hardiker Level 1)
	The Arts Programme of Roscommon County Council includes programmes such as Artists in Schools, Writer in Residence, Roscommon County Youth Theatre and Roscommon County Youth Orchestra.	Statutory	Universal (Hardiker Level 1)
Tusla	1 Early Years Inspector assesses compliance of pre-school services with the Child Care (Pre-school Services) Regulations 2006	Statutory	Universal (Hardiker Level 1)
Roscommon County Childcare Committee	Supports implementation of national childcare programmes at local level; coordinates and assists the development of quality childcare services; provides accredited training and in-service training for childcare providers/staff; provides information and resources for childcare providers, parents and the general public.	Community / Voluntary	Universal (Hardiker Level 1)
Early Years Services	64 Early Learning and Care (ELC) services in county Roscommon, which offer full day care (24 services), offer part time care (13 services), sessional services (16 services) and 7 offer stand alone after-school support. 2 Brothers of Charity services cater for children with additional needs.  Roscommon LEADER Partnership provides pre-school childcare facility for the young children in the EROC Centre in Ballaghaderreen. RLP are also working to provide a community based pre-school in Ballaghaderreen in 2022.	Private and Community / Voluntary	Universal (Hardiker Level 1)
	16 Parent and Toddler Groups	Statutory and Community / Voluntary	Universal (Hardiker Level 1)
Department of Education and Skills (DES)	DES funds 84 Primary Schools including 15 DEIS primary schools and 9 Post Primary Schools, including 3 DEIS schools.	Statutory	Universal (Hardiker Level 1)
Tusla – TESS Tusla Educational Support Services	There is 1 Education Welfare Officer based in the County.  There are 2 fulltime Home School Community Liaison Officers in the county and 1 shared with Longford.  There are 2 School Completion Projects in the county.	Statutory	Targeted (Hardiker Levels 2 & 3)
National Educational Psychological Service	Provides psychology service to students as well as critical incident support and consultative service to schools	Statutory	Universal (Hardiker Level 1)
Galway Roscommon Education and Training Board	Galway Roscommon Education and Training Board funds youth projects and services across the County including those provided by Foroige and Roscommon Youth Service. This work is supported	Statutory and Community / Voluntary	Universal and Targeted (Hardiker Level 1 & 2)

Education			
	by GRETB's Youth Officer. 2 Youthreach Centres in the County, in Ballaghadeereen and Roscommon town providing education, training and work experience for early school leavers aged between 15 – 20 years.		
An Garda Síochána	There is 1 Garda Diversion Project in the County, Roscommon Active Diversion (RAD) based in Roscommon town.	Statutory	Targeted (Hardiker Levels 2 & 3)
Roscommon Leader Partnership	Roscommon LEADER Partnership administer the Social Inclusion and Community Activation Programme for the County on behalf of Roscommon LCDC. This programme provides supports for young people in group settings such as STEM programmes and also provides parenting programmes and co-ordinates the Family Visiting Programme in Castlerea Prison.  Roscommon LEADER Partnership together with PLANET YOUTH is currently translating information and factsheets on parenting into different languages to ensure equality of access for all families.		Universal and Targeted (Hardiker Level 1, 2 and 3)
Family Resource Centres	Four Family Resource Centres in Boyle, Castlerea, Ballaghaderreen and Roscommon town provide afterschool support groups and study groups for children and young people living in their catchment areas.	Community / Voluntary	Universal and Targeted (Hardiker Levels 1 & 2)



Policing and Youth Justice			
Roscommon County Council	Talks on road safety awareness to schools and other groups	Statutory	Universal (Hardiker Level 1)
Tusla Child and Family Agency	Social Work and Child Care Teams are based in Roscommon Town, Boyle and Castlerea. They provide child protection and welfare, adoption, fostering and aftercare services to children and families. There are no residential care, special care or high support services provided in Roscommon, but Roscommon children have access to these services in other parts of the Country.	Statutory	Targeted (Hardiker Levels 3 & 4)
	Tusla Prevention Partnership and Family Support Services are provided through two network areas in the North and South of the County. These services provide needs-led support to children and families who are experiencing adversity in their lives. A key component of family support is prevention and early intervention to develop strengths and build supports.	Statutory	Targeted (Hardiker Levels 2 & 3)
An Garda Síochána	13 Garda Stations providing policing services across the County.	Statutory	Universal (Hardiker Level 1)
	There is 1 Juvenile Liaison Officer based in Roscommon town.	Statutory	Targeted (Hardiker Levels 2 & 3)
	Roscommon Active Diversion (RAD) Youth Project works intensively with young offenders or those who are at risk of offending.	Statutory	Targeted (Hardiker Levels 2 & 3)
Castlerea Prison	Castlerea Prison has an operational capacity of 340 prisoners and is a closed, medium security prison for adult males. It is the committal prison for remand and sentenced prisoners in Connaught and also takes committals from Counties Cavan, Donegal and Longford.	Statutory	Targeted
Family Welfare Conference Co-ordinator	One Family Welfare Conference Co-ordinator covers Galway and Roscommon and has the responsibility for convening family meetings to develop plans for children.	Statutory	Targeted (Hardiker Levels 2 & 3)
Foróige	Youth and Family Support Projects provide services for young people aged 10-18 years and their families and are based in Roscommon town, Boyle, Castlerea and Ballaghaderreen. Other services include Foróige Clubs, Big Brother Big Sister, Teenage Health Initiative, Family Preservation work, individual and group work and targeted summer camps.	Community / Voluntary	Universal and Targeted (Hardiker Level 1 & 2)
Family Resource Centres	Offer one-to-one parenting support and specific parenting programmes. They also provide domestic violence support. There is no refuge in the County but families in need can avail of refuge services in Westmeath, Mayo, Longford and Galway.	Community / Voluntary	Targeted (Hardiker Levels 2 & 3)

Policing and Youth Justice			
Domestic Abuse Services	Support for victims of domestic abuse is provided by Vita House, Roscommon town, Safelink, Boyle and Roscommon Women's Network, Castlerea. Where families are in need of refuge services they can avail of these in Westmeath, Mayo, Longford and Galway.	Community / Voluntary	Targeted (Hardiker Levels 2 & 3)
Local Authority Services			
Roscommon County Council	Comhairle na nOg: gives young people the opportunity to be involved in the development of local services and policies. It is designed to enable young people to have a voice on the services, policies and issues that affect them in their local area.	Voluntary	Universal
	Housing	Statutory	Targeted Levels 2&3
	Arts: provides opportunities for access to creation for children, young people and their families through Roscommon Youth Orchestra, Roscommon Youth Theatre and Roscommon Arts Centre.	Voluntary	Universal
Social Welfare Services			
The Department of Social Protection	DSP serves a wide and diverse group of clients including families, people in employment, unemployed people, people with disabilities, carers and pensioners. It has Local and Branch offices in Roscommon town, Boyle and Castlerea.	Statutory	Universal and Targeted (Hardiker Level 1, 2 and 3)
Money Advice and Budgeting Service	The Money Advice and Budgeting Service is the State's money advice service, guiding people through dealing with problem debt. Services in Roscommon are based in Roscommon town.	Statutory	Universal (Hardiker Level 1)
Roscommon Leader Partnership	Roscommon Leader Partnership provides the local Employment Service, Enterprise Supports, CV Clinics, Employment Skills Workshops and Work Experience Agreements for young people.	Community / Voluntary	Targeted (Hardiker Levels 2 and 3)
Tusla Home Management Service	Two Home Management Advisors cover the County providing services in home to families in need of advice around household budgeting, maintaining a home, nutrition and meal planning.	Statutory	Universal and Targeted (Hardiker Level 1, 2 and 3)

<b>Sports, Recreation, Arts, Culture</b>			
Roscommon Leader Partnership	RLP are responsible for local and community development and provide services to children via the development of youth spaces in rural areas.	Community/ Voluntary	Universal
	The Playbus is funded by the Traveller Health Project and Healthy Ireland funding to deliver out-of-school supports to Traveller children on two sites in South Roscommon. It is also used as a means of engagement at a number of festivals throughout the county during the summer season. Roscommon Youth Service also use the bus to provide outreach supports to young people in rural locations.	Community/ Voluntary	Universal and Targeted (Hardiker Level 1, 2 and 3)
Family Resource Centres	Family Resource Centres provide a range of services such as adult education, meals on wheels and food supports to families, home visit programmes, counselling, information provision and support, advocacy and networking and employment support.  FRCs also provide developmental opportunities including peer support groups and community groups.	Community / Voluntary	Universal and Targeted (Hardiker Level 1, 2 and 3)
Roscommon Women's Network	Works to support women in the County, especially those who are marginalised or disadvantaged, through the provision of training, counselling services, information and advice both at individual and group levels.	Community / Voluntary	Universal and Targeted Services Hardiker Level 1 and 2
Vita House Family Centre	Based in Roscommon town is a community not for profit agency, which offers many services including family mediation, cancer support, bereavement and loss counselling including the Rainbows Programme.	Community / Voluntary	Universal and Targeted Services Hardiker Level 1 and 2
Roscommon County Council	The Arts for Children and Young People programme, provides programmes such as Artists in Schools,, Writer in Residence, Roscommon County Youth Theatre and support for Roscommon County Youth Orchestra with Galway Roscommon Education and Training Boards.	Statutory	Universal (Hardiker Level 1)
Roscommon Young Carers Project	Roscommon Young Carers Project offers a range of supports for young carers, who are caring for a family member, including regular days out, clubs and workshops.	Community / Voluntary	Universal and Targeted Services Hardiker Level 1 and 2
Planet Youth	Planet Youth is an evidence based primary prevention model, developed in Iceland, and being implemented in the West of Ireland. It aims to reduce substance abuse rates among adolescents and supports for children, young people, parents and schools are offered via research, webinars, workshops and online websites	Community / Voluntary	Universal (Hardiker Level 1)

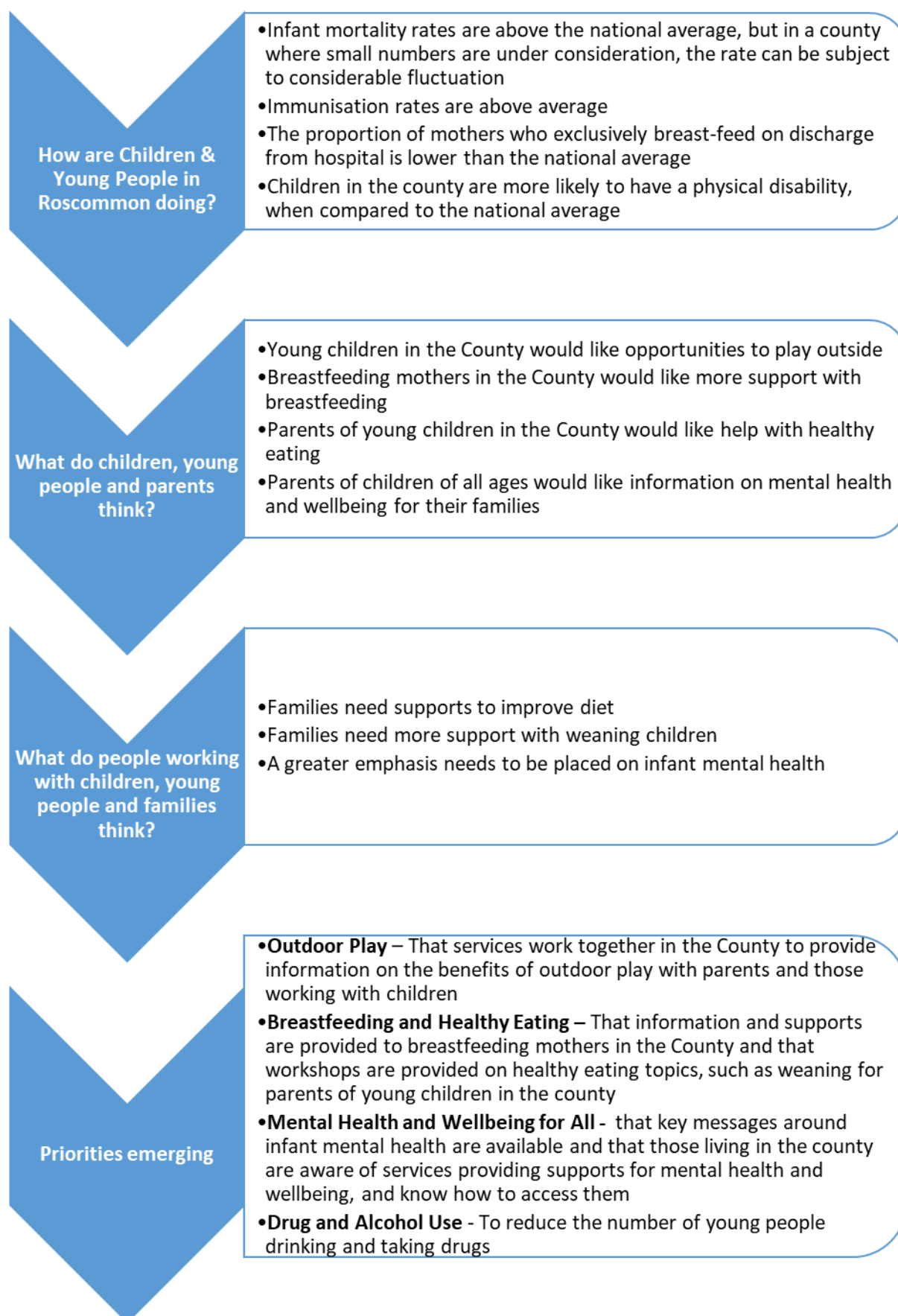
Music Generation Roscommon	Introducing music to children who may otherwise not have the opportunity to participate through provision of tuition, performance opportunities and renting instrument	Voluntary	Universal and Targeted (Hardiker Levels 1 & 2)
<b>Youth Services</b>			
Roscommon Youth Service	Roscommon Youth Service, is a Roscommon Leader Partnership and Foróige targeted flexible youth service funded by the Department of Children, Equality, Disability, Integration and Youth through the Galway and Roscommon Education and Training Board. The aim of the service is to provide support for young people living in county Roscommon aged 10-24 years who are at risk of not reaching their full potential due to a variety of social factors including economic disadvantage, marginalisation, rural isolation, social isolation, mental health concerns or disability. The project offers a range of approaches including small and large group work, individual work, outreach and advocacy work.	Community / Voluntary	Universal (Hardiker Level 1)
Foróige	Foróige is the leading youth organisation in Ireland and has been working with young people since 1952. Its purpose is to enable young people to involve themselves consciously and actively in their development and in the development of society. In Roscommon Foróige supports young people aged 10 to 24 years through GRET, Tusla and Department of Justice projects to reach their fullest potential using the youth work practice model and manualised programme. Foróige also supports a network of volunteer-led youth clubs in the County.	Community / Voluntary	Universal and Targeted Services Hardiker Level 1 and 2

## Section 4: Local Needs Analysis in Roscommon

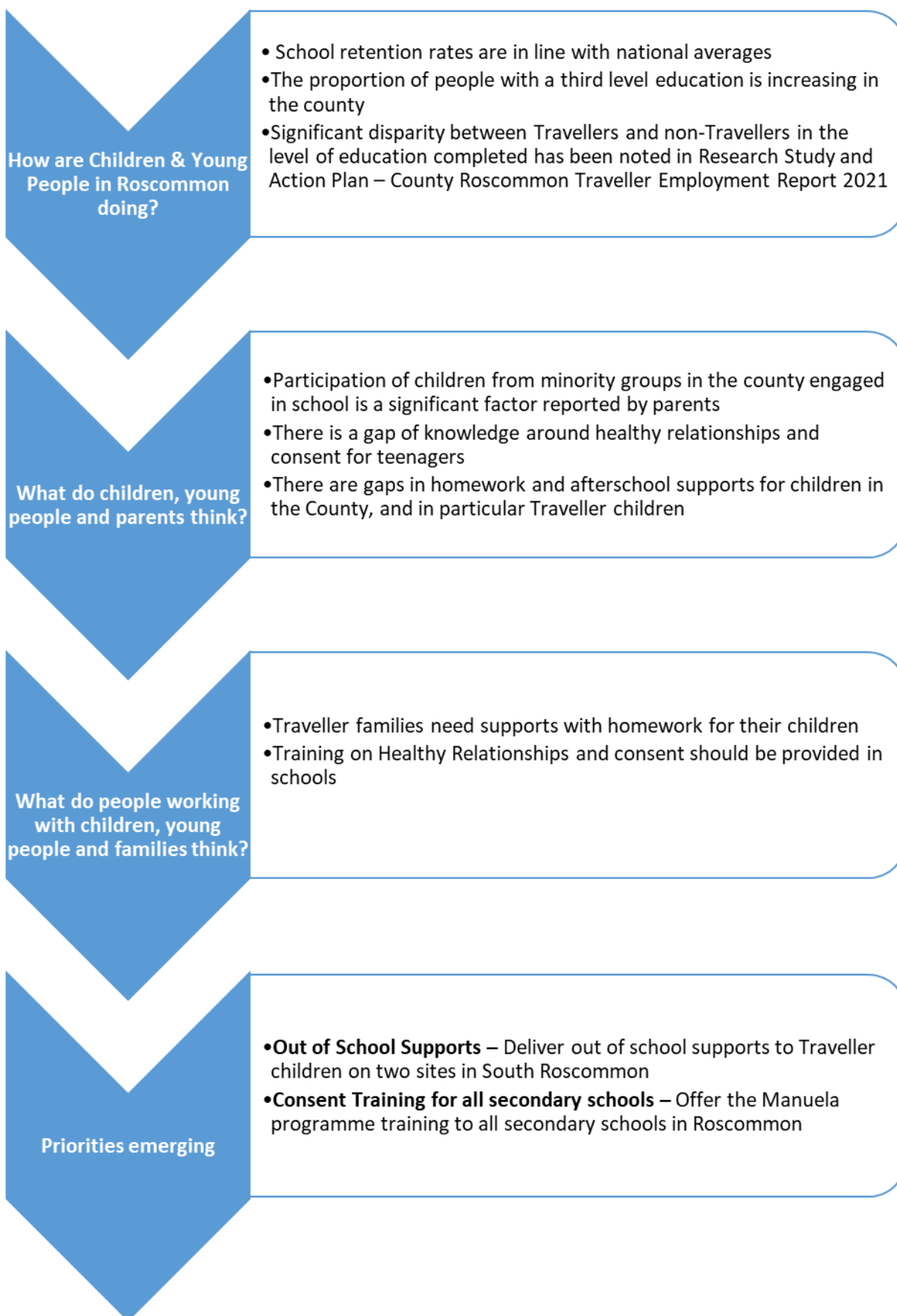
During 2020, CYPSC member organisations participated in two planning sessions guided by an external facilitator, where predominant themes and gaps for children, young people and their families were considered. These sessions took into account principal considerations of children, young people and their parents, alongside the information and insight collected through consultation. Data presented as part of the socio-demographic profile and the audit of services was also considered. This section presents a distilled account of this process categorised by the overarching national outcomes for children and young people.



## Outcome Area 1 Active and Healthy, Physical and Mental Wellbeing



## Outcome Area 2 Achieving in All Areas of Learning and Development



## Outcome Area 3 Safe and Protected from Harm

How are Children & Young People in Roscommon doing?

- The number of dedicated youth spaces in the county has increased with the provision of safe spaces for young people in all large towns in the County
- Meitheal processes are in line with the national average

What do children, young people and parents think?

- Parents want more support in fulfilling their parenting role
- Parents and young people want more information on services available in various formats
- Parents of children from minority groups don't want their children to experience discrimination and racism

What do people working with children, young people and families think?

- There are two very active Child and Family Support Networks in the County
- Drop in Clinics provide significant support for children and young people, via their support for parents. The inter-agency format of service provision is an important feature of this service
- There is a need to support the Planet Youth Primary Prevention Model, which is being implemented in the region, as a means of reducing alcohol and drug use
- Services collaborating to facilitate the provision of parenting support programmes is positive

Priorities emerging

- Information on services** – to make information more available and accessible for children and young people
- Map and coordinate parenting programmes** –to avoid duplication of provision
- Promote Parenting supports as universal services**
- Continue to promote Meitheal as a best practice model** – offer training opportunities and advice for services



## Outcome Area 4 Economic Security and Opportunity

How are Children & Young People in Roscommon doing?

- The majority of electoral divisions in the County are inclined towards deprivation, impacting children and young people, who live in consistent poverty. These are mostly concentrated in the North and West of the County
- There are challenges for families accessing many different types services including training and employment based in Roscommon town, due to the lack of availability of public transport

What do children, young people and parents think?

- Parents feel education is best way to ensure economic opportunities for their children
- Challenges exist in accessing school places for some children, in particular in the North and West of the County

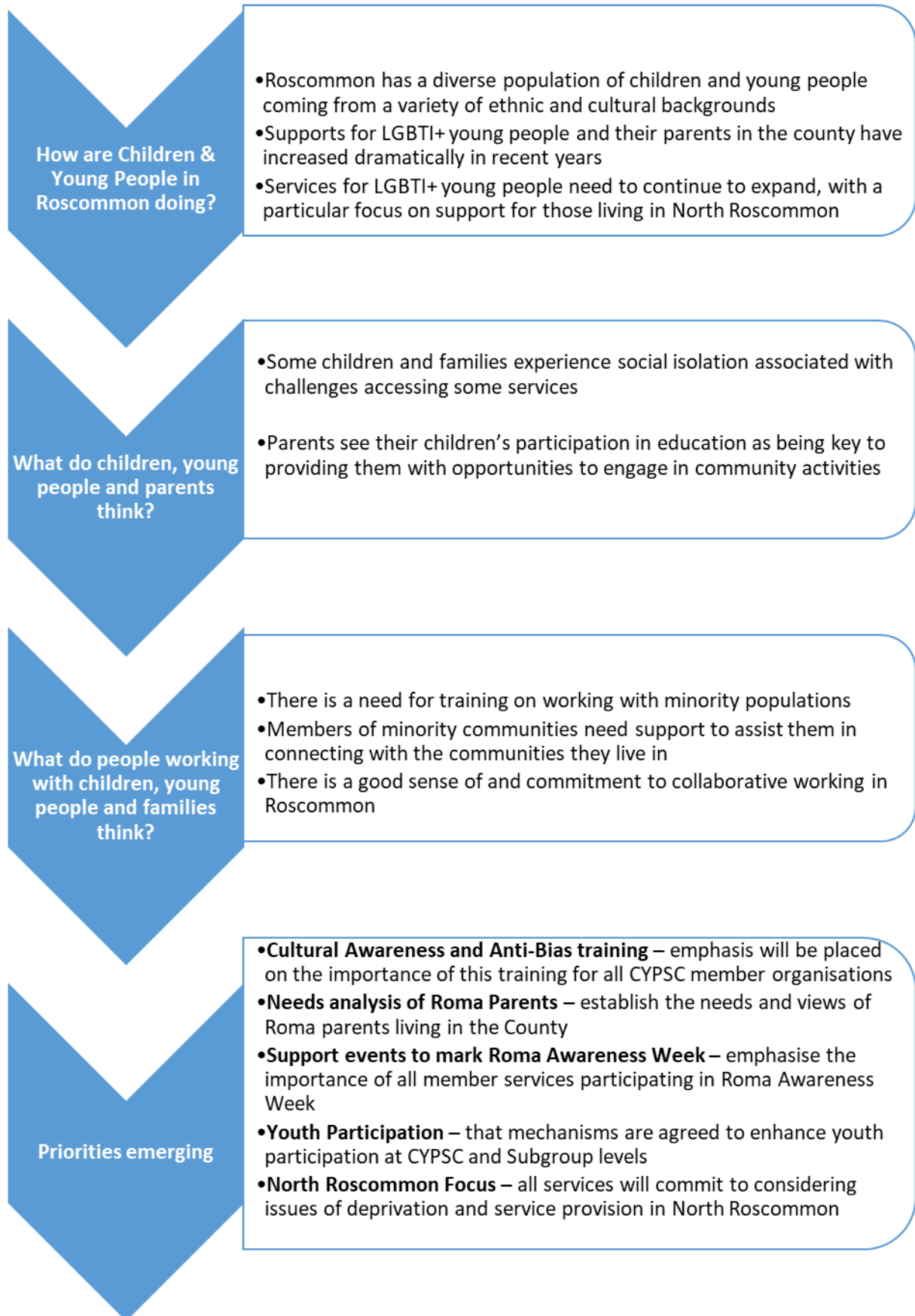
What do people working with children, young people and families think?

- Additional supports and focus should be placed on geographical areas experiencing high levels of disadvantage, in particular North Roscommon

Priorities emerging

- Increased focus of resources** - in North Roscommon
- Focus on supports for **mental health and wellbeing** - as a means of also supporting economic security and opportunity

## Outcome Area 5 Connected, respected and contributing to their world



## Section 5: Summary of Children and Young People’s Plan for Roscommon

Outcome Areas	Local Priority Areas
1. Active and healthy, physical and mental wellbeing	<p>Early Years – Outdoor Play, Breastfeeding, Healthy Eating and Mental Health and Wellbeing for young children</p> <p>Mental Health and Wellbeing</p> <p>Drug and Alcohol Use</p>
2. Achieving full potential in learning and development	<p>Healthy Relationships Courses for all Secondary Schools in County</p> <p>Out of school Supports for Traveller children and their parents</p>
3. Safe and protected from harm	<p>Supporting parents - develop information on services, coordinate Parenting Programmes, promote Parenting supports as universal services and continue to promote Meitheal as a best practice model</p>
4. Economic security and opportunity	<p>Focus on North Roscommon</p>
5. Connected, respected and contributing to their world	<p>LGBTI+ Young People and their parents</p> <p>Supports for Roma communities in Roscommon</p> <p>Youth Participation</p> <p>Supports for Young Carers in Roscommon</p>
Change Management	Local Priority Areas
6. Change management	<p>Public awareness of Support Services in Roscommon</p>

## Section 6: Action Plan for 2022 - 2024



## Action Plan for Roscommon Children and Young People's Services Committee

### Outcome 1: Active and healthy, physical and mental wellbeing

Priority Area	Objective(s)	Indicators	Target	Activities	Timeframe for completion	Lead Responsibility and partners	Link to other plans	Linked to Nat. Outcome(s) and/or Transformational Goal(s)
Outdoor Play	To Promote and Support the Importance of Outdoor Play for young children and families in the County	Number of Outdoor Play Initiatives  Number of Children and families engaging	4 Outdoor Play Initiatives per annum over lifetime of Plan  60 children participating per annum over lifetime of plan	Agree work plan  Organise activities and events  Promote & Distribute Key Messages for Parents on importance of play	March 2022  Dec 2024	Heathy and Active Subgroup  CYPSC Healthy Ireland Oversight Group	A Healthy Weight for Ireland: Obesity Policy and Action Plan 2016 – 2015  Get Ireland Active: National Physical Plan for Ireland  Healthy Ireland Framework  County Roscommon Health and Wellbeing Plan	BOBF Transformational Goal 2: Earlier Intervention and Prevention  Healthy Ireland Framework Goal of increasing the proportion of people that are healthy at all stages of life
	Support the development of outdoor play-based learning in early years services	Number of services participating  Number of children participating  % increase in the number of hours children spend outdoors while in services	10 services participating  100 children participating  10% increase in the number of hours children spending outdoors in early years services	Identify services willing to participate  Develop support materials  Deliver practice learning sessions for early years staff	March 2022  December 2022  December 2024	Roscommon County Childcare Committee  Early Years Services  Early Years Subgroup  CYPSC Healthy Ireland Oversight Group	Roscommon County Childcare Committee Local Implementation Plan  A Healthy Weight for Ireland: Obesity Policy and Action Plan 2016 – 2015  Get Ireland Active: National Physical Plan for Ireland  Healthy Ireland Framework	BOBF Transformational Goal 2: Earlier Intervention and Prevention  Healthy Ireland Framework Goal of increasing the proportion of people that are healthy at all stages of life

## Action Plan for Roscommon Children and Young People's Services Committee

### Outcome 1: Active and healthy, physical and mental wellbeing

Priority Area	Objective(s)	Indicators	Target	Activities	Timeframe for completion	Lead Responsibility and partners	Link to other plans	Linked to Nat. Outcome(s) and/or Transformational Goal(s)
<i>Breastfeeding</i>	To increase awareness of the supports available to breastfeeding mothers, through breastfeeding support groups	Numbers of breastfeeding mothers attending support groups	Increase in numbers of breastfeeding mothers accessing supports and attending groups	Update Breastfeeding Supports Leaflets  Re-establish breast feeding support groups  2 Ante-natal breastfeeding information sessions per annum	December 2024	HSE PHNs  Early Years Subgroup	HSE Regional Strategy  Healthy Ireland Framework  First Five Strategy	BOBF Transformational Goal 2:  Earlier Intervention and Prevention  Support Parents
	Promote Breastfeeding Friendly Services & Businesses	Number of Services & Businesses providing welcoming places for breastfeeding mothers	All CYPSC member organisations signed up to Breastfeeding Friendly Charter  20 Businesses per annum signed up to Breastfeeding Friendly Charter	Develop Breastfeeding Friendly Charter & accompanying information  Information sessions to support services and businesses	December 2024	HSE PHNs  Early Years Subgroup  CYPSC Member Organisations	HSE Regional Strategy  Healthy Ireland Framework  First Five Strategy	BOBF Transformational Goal 2:  Earlier Intervention and Prevention  Support Parents
Healthy Eating	That weaning practices within families reflect current health policy (universal and targeted)	Number of workshops delivered  Number of parents participating in workshops	2 weaning workshops per year  20 parents participating	Promote workshops  Deliver workshops  Evaluate workshops	Ongoing	Early Years Subgroup	Tusla 50 Key Messages for Family Support HSE Nurture Prog.  First Five: Whole of Government Strategy for Babies, Children and their Families	BOBF Transformational Goal 2: Earlier Intervention and Prevention  Healthy Ireland Framework Goal of increasing the proportion of people that are healthy at all

## Action Plan for Roscommon Children and Young People's Services Committee

### Outcome 1: Active and healthy, physical and mental wellbeing

Priority Area	Objective(s)	Indicators	Target	Activities	Timeframe for completion	Lead Responsibility and partners	Link to other plans	Linked to Nat. Outcome(s) and/or Transformational Goal(s)
								stages of life
Mental Health & Wellbeing for young children	Promote key messages on mental health and well-being	Number of workshops delivered on specific topics, such as the importance of sleep	1 Sleep workshop per annum over lifetime of plan	Promote workshops  Deliver workshops	Ongoing	Early Years Subgroup	Healthy Ireland Framework  First Five Strategy	Healthy Ireland Framework Goal of increasing the proportion of people that are healthy at all stages of life
Mental Health & Wellbeing	That families are aware of local mental health services & supports	% increase in the number of visits to www.westbewell.ie website and social media platforms	50% increase in visits to the westbewell platforms over the lifetime of the plan	Develop & contribute to online & print resources  Circulate & promote resources	December 2024	West be Well Regional Steering Group  CAMHS, Jigsaw, Resource Officers for Suicide Prevention	Connecting for Life, Galway, Mayo & Roscommon	BOBF Trans Goals 2: Early Intervention and Prevention Healthy Ireland: A Framework for Improved Health and Wellbeing
Mental Health & Wellbeing	Survey of the impact of addiction on mental health and other services in Roscommon	% services who have contributed to the survey	50% CYPSC member services contributed to the survey	Design survey  Distribute survey & analyse data  Present to CYPSC Subgroup and CYPSC membership  Use information to develop a business case for increased addition services in County	End of 2022       End of 2023	Mental Health Subgroup Members	Sharing the Vision – a Mental Health Policy for Everyone 2020 - 2030	BOBF Transformational Goals 4: Ensure Quality Services

## Action Plan for Roscommon Children and Young People's Services Committee

### Outcome 1: Active and healthy, physical and mental wellbeing

Priority Area	Objective(s)	Indicators	Target	Activities	Timeframe for completion	Lead Responsibility and partners	Link to other plans	Linked to Nat. Outcome(s) and/or Transformational Goal(s)
Drug & Alcohol Use	To reduce the number of young people drinking and taking drugs	<p>% young people (TY) drunk in past 30 days</p> <p>% young people used cannabis once in lifetime</p> <p>% young people smoking daily</p>	<p>Less than 27% of young people (TY) drunk in the past 30 days</p> <p>Less than 19% of young people used cannabis once in lifetime</p> <p>Less than 7.3% of young people smoking daily</p>	<p>Continue to support Planet Youth data collection</p> <p>Continue to support Planet Youth Implementation Framework</p>	End of 2023	<p>Western Region Drug and Alcohol Taskforce</p> <p>PPFS Subgroup</p>	<p>Public Alcohol Act 2018</p> <p>Planet Youth Implementation Framework</p>	BOBF Trans Goals 1, 2 and 6: Supporting Parents; Earlier Intervention and Prevention; effective collaboration



## Action Plan for Roscommon Children and Young People's Services Committee

### Outcome 2: Achieving full potential in all areas of learning and development

Priority Area	Objective(s)	Indicators	Target	Activities	Timeframe for completion	Lead Responsibility and partners	Link to other plans	Linked to other national outcome(s) and or Transformational Goal(s)
Healthy Relationships courses for all secondary schools in County	That all TY students & a cohort of teaching staff in every school receive training related to Healthy Relationships and consent	% of schools participating  % of school staff participating  % of students participating	33% of schools in county per annum committed to training  5% of school staff in each school trained in programme as a minimum aim  100% of Transition Year students in each school have completed programme	Training for teachers and other school staff delivered  Training for students delivered	2023	Galway Rape Crisis Centre  Roscommon CYPSC members	Zero Tolerance Third National Domestic, Sexual and Gender Based Violence Strategy 2022 -2026	BOBF Trans Goal 6 Effective Collaboration
Out of School Supports for Traveller children and their parents	Deliver after- school supports across two Traveller sites in South Roscommon from Playbus	Staff employed to deliver supports  Supports provided to children for four hours per week  Supports for Traveller parents provided on topics of health, wellbeing and education	Two staff employed to deliver supports  That 12 Traveller children receive after-school supports  That parents receive supports on health, wellbeing & education	Homework supports provided on Playbus across two sites  Workshops provided to parents on different topics  Evaluate and report	Timeframe of Round 4 of Healthy Ireland funding	Early Years Subgroup  Roscommon Leader Partnership	GRETB Needs Analysis to Inform Youth Work Provision, 2019	BOBF Trans Goals 1, 2 and 4: Support Parents, Earlier Intervention and Prevention and Ensuring Quality Services

## Action Plan for Roscommon Children and Young People's Services Committee

### Outcome 3: Safe and protected from harm

Priority Area	Objective(s)	Indicators	Target	Activities	Timeframe for completion	Lead Responsibility and partners	Link to other plans	Linked to other national outcome(s) and or Transformational Goal(s)
Supporting Parents	That information on services for children and young people is available throughout the county	<p>% increase in self-referrals to services</p> <p>Number of Roscommon Parenting Hub facebook posts</p> <p>Proportion of Services Contributing</p>	<p>20% increase in self-referrals to services</p> <p>Two posts per week</p> <p>That 100% of CYPSC member organisations are contributing</p>	<p>Develop new service information video clips</p> <p>Develop service information under the banner of "WE'RE HERE ROSCOMMON"</p>	Ongoing	<p>PPFS Subgroup</p> <p>CYPSC committee member services</p> <p>Social Inclusion Measures Group members</p>	<p>Social Inclusion Measures Subgroup</p> <p>Tusla Parenting Support Strategy</p> <p>Early Years Health and Wellbeing Plan</p>	BOBF Trans Goals 1, 2 and 4: Support Parents, Earlier Intervention and Prevention and Ensuring Quality Services
	Map and coordinate Parenting Programmes	Survey of Parenting Programmes completed by CFSN members	One survey of Parenting Programmes facilitated and completed by 100% of CFSN membership	<p>Develop and Distribute Survey</p> <p>Analysis of Data</p> <p>Briefings on findings delivered to CFSNs and CYPSC</p> <p>CYPSC members commit to recommendations</p>	<p>End 2022</p> <p>2023</p> <p>2023</p> <p>2023</p>	<p>PPFS Subgroup</p> <p>CYPSC Coordinator</p> <p>CFSN members</p>	Tusla Parenting Support Strategy	BOBF Trans Goals 1, 2 and 4: Support Parents, Earlier Intervention and Prevention and Ensuring Quality Services

## Action Plan for Roscommon Children and Young People's Services Committee

### Outcome 2: Achieving full potential in all areas of learning and development

Priority Area	Objective(s)	Indicators	Target	Activities	Timeframe for completion	Lead Responsibility and partners	Link to other plans	Linked to other national outcome(s) and or Transformational Goal(s)
	Promote Parenting Supports as universal services	Consultation with parents on motivations and barriers to accessing supports	Clarify motivation and barriers for parents in accessing parenting supports  Reflect learning in promotion of parenting supports	Services will consult with parents to explore motivations and barriers  Services will support Planet Youth Roscommon work regarding universal information for parents	Ongoing	PPFS Subgroup  All CYPSC member organisations  Planet Youth Roscommon Steering Committee	Early Years Health and Wellbeing Plan  Planet Youth Roscommon County Report and Implementation Plan	BOBF Trans Goals 1, 2 and 4: Support Parents, Earlier Intervention and Prevention and Ensuring Quality Services
	Continue to Promote Meitheal as a Best Practice Model	Number of Meitheal Training Opportunities  Number of Meitheal meetings Requested	Meitheal Training Delivered once per year, at a minimum  Number of Meitheal requests in line with national average	Deliver Training Opportunities  Continue to showcase model at CYPSC and Subgroup level	Ongoing	PPFS Subgroup  All CYPSC member organisations	Tusla National Service Delivery Model	BOBF Goals 2 and 6 Earlier Intervention and Prevention; Effective Collaboration

## Action Plan for Roscommon Children and Young People's Services Committee

### Outcome 4: Economic security and opportunity

Priority Area	Objective(s)	Indicators	Target	Activities	Timeframe for completion	Lead Responsibility and partners	Link to other plans	Linked to other national outcome(s) and or Transformational Goal(s)
North Roscommon Focus	To increase resources for children, young people and their families in North Roscommon to include access to training and employment opportunities	<p>Number of out-reach or new services available</p> <p>Number of training opportunities available in the area</p>	<p>Two new services for families in North Roscommon</p> <p>Development of a Youth and Resource Centre which will provide accessible training courses on a variety of topics.</p>	<p>Promote need for services in North Roscommon with CYPSC member organisations</p> <p>Consideration given to matching needs with service provision in Subgroups of CYPSC</p>	Timeframe of Plan	Connected, Respected and Contributing Subgroup	Roscommon County Council LECP	BOBF Trans Goal 3: Listen to and Involve Children and Young People

## Action Plan for Roscommon Children and Young People's Services Committee

### Outcome 5: Connected, respected and contributing to their world

Priority Area	Objective(s)	Indicators	Target	Activities	Timeframe for completion	Lead Responsibility and partners	Link to other plans	Linked to other national outcome(s) and or Transformational Goal(s)
LGBTI+ Young People & their Parents	Support the development of an LGBTI+ Support Group in North Roscommon	Number of groups established	One group established  6 young people attending group	Research need in area  Establish Group  Promote referrals to service	End 2023  End 2023	Connected, Respected and Contributing Subgroup & Roscommon Youth Service	LGBTI + National Youth Strategy 2018 -2020	BOBF Trans Goal 3: Listen to and Involve Children and Young People
	Support for Tuismitheoirí le Cheile group for parents of young people who are LGBTI+ and associated website	Information for all CYPSC member services on group and associated supports	All CYPSC member services aware of support  All CYPSC member services availing of support when required	Flyer Updated & distributed  Distribution of the Tell It Out booklet to services in County	End 2023	Connected, Respected and Contributing Subgroup	LGBTI + National Youth Strategy 2018 -2020	BOBF Trans Goals 1, 2 and 4: Support Parents, Earlier Intervention and Prevention and Ensuring Quality Services
Supports for Roma communities in Roscommon	All CYPSC member organisations will participate in Cultural Awareness & Anti-Bias training	% CYPSC member organisations who have engaged with training	100% CYPSC member organisations have engaged in training	Liaise with Pavee Point  Two training sessions per year for lifetime of plan	End 2023	Roma Subgroup  Roscommon Youth Service  Family Resource Centres	Roscommon County Council LECP	
	That members of the community will be facilitated to contribute to the development of a Migrant Strategy for	That community champions are identified to support  Report on views of Roma residents	Number of Community Champions  One report on views of Roma parents will	Community Champions Identified  Focus Groups with community	End 2022	Roscommon County Council  Roscommon Leader Partnership	Roscommon County Council LECP	BOBF Transformational Goal 1 Support for Parents

Action Plan for Roscommon Children and Young People's Services Committee								
Outcome 5: Connected, respected and contributing to their world								
Priority Area	Objective(s)	Indicators	Target	Activities	Timeframe for completion	Lead Responsibility and partners	Link to other plans	Linked to other national outcome(s) and or Transformational Goal(s)
Supports for Roma communities in Roscommon	Roscommon  That community members are identified & supported to complete needs analysis with Roma Parents	Roma parental needs analysis complete	inform County Migrant Strategy  Four Roma parents are trained to carry out a needs analysis with their peers  One needs analysis report	members  Parents identified & supported to develop consultation  Consultation complete  Action Plan developed to respond to parenting issues for Roma parents	End 2022	Roscommon CYPSC members  Members of Roma Subgroup	Tusla Participation Strategy  Tusla Parenting Support Strategy	BOBF Transformational Goal 1 Support for Parents
Youth Participation	That young people are supported to contribute to CYPSC and its Subgroups through a supported substructure	The establishment of a youth participation structure  Youth representation on CYPSC and subgroups	To facilitate a Youth Participation structure for CYPSC  At least one youth representative per CYPSC subgroup	Consult existing youth participation structures  Design and agree a structure  Design and agree supports required  Establish structure	End 2022	Connected, Respected and Contributing SubGroup and Comhairle na NÓg  Schools and CYPSC committee	CYPSC Youth Participation Guidance  Tusla Participation Strategy	BOBF Trans Goal 3: Listen to and Involve Children and Young People

## Action Plan for Roscommon Children and Young People's Services Committee

### Outcome 5: Connected, respected and contributing to their world

Priority Area	Objective(s)	Indicators	Target	Activities	Timeframe for completion	Lead Responsibility and partners	Link to other plans	Linked to other national outcome(s) and or Transformational Goal(s)
Support for Young Carers in Roscommon	That young carers are supported in their caring role	<p>Numbers of young carers engaged in the Roscommon Young Carers Project</p> <p>A variety of activities are available for Young Carers</p>	<p>40 young carers engaged in the Young Carers Project</p> <p>Monthly activity sessions provided for young carers</p>	<p>Continue to promote awareness of the project</p> <p>Continue to support referrals to Project</p>	End 2024	<p>Connected, Respected and Contributing SubGroup</p> <p>Family Resource Centres</p> <p>CYPSC member services</p>	National Carers Strategy	BOBF Trans Goals 2 and 3: Earlier Intervention and Prevention and Listen to and Involve Children and Young People
Public awareness of support services in County	That those living in County know where to get support when needed	<p>Distribute existing information widely among all CYPSC member organisations</p> <p>New information on services available in various formats</p> <p>Information translated into various languages</p>	<p>Three service videos developed per annum for lifetime of plan</p> <p>Translation of materials</p> <p>Dissemination of materials</p>	<p>Develop resources to support awareness on services in county supporting families</p> <p>Resources translated into different languages</p>	<p>End 2024</p> <p>End 2024</p>	Connected, Respected and Contributing Subgroup	Roscommon County Council LECP	BOBF Transformational Goal 4 Ensure quality services

## Section 7: Monitoring and Review

Sub-groups will be established to progress actions within the Action Plan. Data relating to indicators specified in the plan will be collected by each sub-group as appropriate. Each active sub-group will present a progress report at meetings of the Roscommon CYPSC. Challenges arising will be noted and addressed at committee meetings.

In line with the national CYPSC Planning and Reporting Framework, Roscommon CYPSC will produce an Annual Programme of Work and a subsequent Annual Progress Report for each of the three years comprising the span of this plan. These reports will be compiled by the CYPSC Coordinator following consultation with sub-group convenors.

Mid-Year Progress Reviews will be completed and considered at the first CYPSC meeting thereafter. Following consideration of the review, the committee may choose to amend targets and / or actions. All reports will be submitted to the Tusla national CYPSC office and for the attention of CYPSC national structures currently under review and the Department of Children, Equality, Disability, Integration and Youth.





## Section 8: Appendices

### Appendix 1: Glossary of Abbreviations

**BOBF** Better Outcome Brighter Futures National Policy Framework for Children and Young People

**C&V** Community and Voluntary

**CAMHS** Child and Adolescent Mental Health Services

**CCC** City and County Childcare Committees

**CFSN** Child and Family Support Network

**CYPP** Children and Young People's Plan

**CYPSC** Children and Young People's Services Committees

**DCYA** Department of Children and Youth Affairs

**DECLG** Department of the Environment, Community and Local Government

**DEIS** Delivering Equality of Opportunity in Schools

**DES** Department of Education and Skills

**DOH** Department of Health

**DSP** Department of Social Protection

**ECCE** Early Childhood Care and Education

**FRC** Family Resource Centre

**GRETB** Galway Roscommon Education and Training Board

**HEA** Higher Education Authority

**HIF** Healthy Ireland Fund

**HIQA** Health Information and Quality Authority

**HSE** Health Service Executive

**IPPN** Irish Primary Principals' Network

**LA** Local Authority

**LAP** Local Area Pathway

**LCDC** Local Community Development Committee

**LDC** Local Development Company

**LECP** Local Economic and Community Plan (compiled by LCDC)

**NAPD** National Association of Principals and Deputy Principals

**NEPS** National Educational Psychological Service

**PPFS** Prevention Partnership and Family Support

**PPN** Public Participation Network

**RLP** Roscommon Leader Partnership

**SCP** School Completion Programme

**SICAP** Social Inclusion Activation Programme

**TESS** Tusla Education and Welfare

**WRDATF** Western Regional Drug & Alcohol Task Force

## Appendix 2: Roscommon CYPSC Terms of Reference

### 1. Purpose

The purpose of Roscommon Children and Young People's Services Committee (CYPSC) will be to provide strategic direction and leadership to ensure effective interagency co-ordination and collaboration in order to achieve the best outcomes for all children and young people in Roscommon.

### 2. Roscommon CYPSC Vision and Principles

The vision of Roscommon CYPSC is that outcomes for Children and Young People are improved through collaborative working.

The principles that underpin the work of Roscommon CYPSC are:

- That Roscommon CYPSC puts the best available evidence at the heart of planning and reporting processes.
- That Roscommon CYPSC planning is outcomes based, i.e. its purpose is to achieve agreed outcomes.
- That Roscommon CYPSC members own and direct the work of the committee and hold themselves and others accountable to the common agenda as expressed in this plan.
- Roscommon CYPSC is committed to collecting and using data to make informed decisions. Alongside quantitative data, the committee recognises the value of qualitative research to understand the experiences, meaning and views of children and young people and service providers.
- Roscommon CYPSC stakeholders are open to learning through reflection on how well the work has lived up to performance expectation.
- Regular and open communications will flow - bottom up, top down and across the CYPSC initiative.
- The work of Roscommon CYPSC will be children-centred and children and young people will participate in a structured and supported way.
- Roscommon CYPSC has a commitment to equality and human rights and this will be reflected in its work.

### 3. Roles and Responsibilities

All member organisations have a responsibility to attend meetings, disseminate information from CYPSC to their organisations or networks, and nominate staff on to their working groups.

### 4. Meetings

All meetings will be chaired by the Tusla Area Manager. A meeting quorum will be eight members of the CYPSC. Decisions will be made by consensus (i.e. members are satisfied with the decision even

though it may not be their first choice). If this is not possible, the CYPSC Chairperson makes the final decisions. Meeting agendas and minutes will be provided by the CYPSC Coordinator. Meetings will be held five times per annum for two hours at the Tusla Offices, Government Buildings, Convent Road, Roscommon. If required, task group meetings will be arranged outside of these times at a time convenient to members.

#### **5. Amendment, Modification or Variation**

The Terms of Reference may be amended, modified or varied in writing after consultation and agreement by Roscommon CYPSC members.

Appendix 3: Discussion document for Roscommon CYPSC on supporting the Slovakian Roma population in the county

# Discussion document for Roscommon CYPSC on supporting the Slovakian Roma population in the county

June 2020



This discussion document draws together national and local information, research and data on the Slovakian Roma population in Co. Roscommon. It sets out what is already known about this population by summarising national research, and by introducing information drawn from local service providers who are working with this population in Co Roscommon. We hope to highlight the following:

- What is known about the Slovakian Roma community in Ireland
- The numbers of Slovakian Roma in Co Roscommon and the locations in which they are living
- The strengths and vulnerabilities of Slovakian Roma community as they present in Co Roscommon (including the impact of the COVID 19 situation on the community)
- The priority support needs for this population

We hope the document will inform a debate and a discussion on the most effective way in which Roscommon CYPSC can respond to the issues highlighted within this document.

## **1. Who are the Roma?**

The Roma are Europe's largest ethnic minority. Out of an estimated 10-12 million in total in Europe, some 6 million live in the EU, and most of them hold the citizenship of an EU country. Many Roma in the EU are victims of prejudice and social exclusion, despite the fact that EU countries have banned discrimination<sup>11</sup>. Estimates of the number of Roma resident in Ireland at any one time fluctuate widely; the Council of Europe estimated that in 2015 there are approximately 37,500 Roma living in Ireland (0.9% of the population<sup>12</sup> with most coming from Romania, the Czech Republic, and Slovakia<sup>13</sup>. Pavee Point (2018) identified 4,210 Roma, but acknowledged that this was a likely under estimation of the population.

Many Roma in Ireland are now Irish citizens and there are now many second and third generation Roma who have been born in Ireland. Concerns have been raised by human rights bodies in relation to the disproportionately high unemployment, poverty and health inequalities faced by Roma in Ireland in comparison to the general population. These concerns were also identified in a needs assessment conducted in 2018.

## **2. National Roma Needs Assessment**

In 2018, the first National Roma Needs Assessment was published in Ireland. The Needs Assessments findings are summarised as follows:

---

<sup>11</sup> EU (2020) Roma integration in the EU

<sup>12</sup> CoE (2015) Roma Factsheet for Ireland

<sup>13</sup> Pavee Point (2018) Roma in Ireland

- The demographic findings reflect a diverse picture of Roma communities in Ireland, demonstrating the need for comprehensive and accurate data to inform policy and practice and to avoid conscious or unconscious applications of stereotypes and generalisations about Roma.
- Roma face high levels of discrimination in the street, in finding accommodation and in employment. Respondents reported feeling discriminated against due to being Roma, at both an institutional and individual level.
- Roma women are particularly vulnerable to on-street racism due to an association with traditional clothing.
- There are frequent experiences of poverty, including for families with children. 20% of Roma are living without ongoing financial support (including child benefit), social housing supports (including homeless supports) and employment training supports, such as community employment. As a result, some Roma are experiencing severe hardship
- Many Roma are living in poor and insecure accommodation. Families with children are living in overcrowded and unsafe conditions.
- Health concerns were identified in the following self-reported areas: high levels of diabetes in the population (22%); poor health status of children (25%); poor mental health (51%); lack of access to a GP/ no medical card (50%); relatively low uptake of prenatal care (65%); poorly equipped for the ante natal period (39%).
- It also emerged from the study that Roma need extra support to access information due to issues of language, literacy, and understanding of the health system in Ireland.

### **3. The numbers of Slovakian Roma in Co Roscommon by locations in which they are living**

Local Data collected from Roscommon Youth Service, Foroige, Roscommon Community College, Roscommon Town Youth Reach, Roscommon Leader Partnership, Ballaghaderreen FRC, St. Comán's Wood Primary School and the HSE has allowed us to build the following local profile for the Slovakian Roma community.

#### **3.1 Roscommon Town**

A recent joint effort by the HSE and Foróige Roscommon to dispense information on Covid-19 to the Roma Community in the town revealed a minimum of **37 Slovakian Roma households/family groups** living in Roscommon town. These family groups represent **90+ young people** under the aged of 18 years with a large number of those aged under age of 10 years<sup>14</sup>. Additionally **72+ adults/parents** and adult siblings (many under the age of 24).

---

<sup>14</sup> From the home visits carried out, the number of children observed as being younger of preschool age was at least 20 children.

This data amounts to approx. **162 individuals** as the minimum number of Slovakian Roma living in Roscommon town.

### 3.2 Schools attended by Slovakian Roma in Roscommon Town<sup>15</sup>

Roscommon Community College	Total 60/70 (approx.) children/ young people
Roscommon Town Youth Reach	
St. Comán's Wood Primary School	

### 4. Ballaghaderreen and Frenchpark

A recent joint effort by the HSE, Foróige, RLP and Ballaghaderreen FRC to dispense information on Covid-19 to the Roma community revealed a minimum of **15 Slovakian Roma households/ family groups** living in Ballaghaderreen/ Frenchpark. These families represented **36 + young people** under the age of 18 years with a large number under age of 10 years. Additionally, **29 plus adults/parents** and adult siblings (min of 2 under the age of 24).

### 5. Romanian Roma Community

Throughout the collection of this data, the following additional information on the Romanian Roma Community was also obtained:

**Roscommon and Ballaghaderreen:** 5 family groups/ households – 12 Adults (some under 24) and 7 children under 18 (minimum).

*In total there are (a minimum of) 215 Slovakian Roma and 19 Romanian Roma living in Co Roscommon.*

### 6. The strengths and vulnerabilities of Slovakian Roma community as they present to front line services in Co Roscommon (including the impact of the COVID 19 situation)

Vulnerabilities and challenges	Strengths
<ul style="list-style-type: none"> <li>It is reported by primary and secondary schools in Roscommon Town that since the COVID-19</li> </ul>	<ul style="list-style-type: none"> <li>The community is friendly, welcoming and open</li> </ul>

<sup>15</sup> Numbers attending individual schools not provided to protect the privacy of these young people.

restrictions, there has been an almost complete disengagement from education by the Roma community despite all efforts that have been made to engage the community.

- An educational trend has emerged within this community of leaving mainstream education after 3<sup>rd</sup> year and progressing into YouthReach. This is seen as the natural progression pathway by young people in this community now.
- Many adult members of the community do not speak English. Some young people in school settings do not speak English as a second language.
- Housing was observed as often overcrowded and in poor condition. All housing appears to be in private rental market and not social housing.
- Integration into the community seems to be poor and a general sense of isolation from the local community/ other minority communities has been observed.
- Engagement with some services is reported as poor.
- The role of women in the community appears to be limited and there is little evidence of female progression/ equality.

- There is a strong sense of community among the Slovakian Roma population.

- There are high levels of engagement with Roscommon Youth Service / Foroige and with YouthReach

- Outside of the current restrictions, school attendance generally is reported as good.

- Fathers take a very active role in parenting- particularly outside of the home.

- Many of the community have gained employment in local industry.



- |  |  |
|--|--|
| <ul style="list-style-type: none"> <li>• Third level education for young people is seen as not attainable by the community.</li> </ul> |  |
|--|--|

### 7. The priority support needs for this population

- The need for barrier free engagement with support services including increased knowledge of local services for members of this community
- The development of educational pathways that meet the needs of the population (inc 3<sup>rd</sup> level)
- Access to interpretation services within schools and services for members of the population where English is not spoken as a 2<sup>nd</sup> language
- Better social integration and inclusion in the communities in which they are living.
- Reducing the stigma emerging in the community against the Slovakian Roma.
- There can be confusion in local communities between this population and other ethnic minority groups living in the area
- Some young people have begun to engage in criminal activity; parental supervision of young males needs to be encouraged
- There are many very young parents in the community (the age of consent in Slovakia is 15 years)
- Empowerment of women within this community
- Improvements to housing conditions
- Improved communication between families and schools and support with the school registration process.

**Signed:**

*Gary Nugent*

**Roscommon Foroige**

*Marie Gibbons*

**TUSLA/ Roscommon CYPSC**