

Kilkenny Children and Young People's Services Committee

# Children and Young People's Plan

2021-2023



## Contact

**CYPSC Co-ordinator: Mairéad Maddock**

Kilkenny Children and Young People's Services Committees  
Tusla Child & Family Agency  
Athy Road  
Carlow R93 X9C2  
Phone: 059 9129 511  
Mobile: 085 789 7268  
Email: [Mairead.Maddock@tusla.ie](mailto:Mairead.Maddock@tusla.ie)

## Contents

|  |           |
|--|-----------|
| <b>Forward</b> .....   | <b>4</b>  |
| <b>Section 1: Introduction</b> .....   | <b>6</b>  |
| Background to Children and Young People’s Services Committees .....                                      | 7         |
| Who we are.....  | 8         |
| How the Children and Young People’s Plan was developed .....   | 10        |
| <b>Section 2: Socio Demographic Profile of County Kilkenny</b> .....                                     | <b>12</b> |
| <b>Section 3: Overview of Services to Children and Families County Kilkenny</b> .....                    | <b>31</b> |
| <b>Section 4: Local Needs Analysis in County Kilkenny</b> .....  | <b>36</b> |
| <b>Section 5: Summary of Children and Young People’s Plan for County Kilkenny</b> .....                  | <b>45</b> |
| <b>Section 6: Action Plan for County Kilkenny Children &amp; Young People’s Services Committee</b> ..... | <b>46</b> |
| <b>Section 7: Monitoring and Review</b> .....  | <b>73</b> |
| <b>Section 8: Appendices</b> .....   | <b>74</b> |

***\*\*Since the consultations and reports to inform this Plan were conducted the restrictions due to the Covid 19 pandemic have seriously affected the implementation of many of the planned actions. However, the identified needs are still there and CYPSC will endeavour to implement actions whenever it is feasible. In the meantime CYPSC is working with its members to respond to the immediate needs resulting from the lockdowns and other restrictions and will carry out the planned actions when public health guidelines allow.\*\*\****

## Foreword

As Chairperson of Kilkenny Children and Young People's Services Committees (CYPSC), I am delighted to present our first Children and Young People's Plan for the county. The plan represents the outcome of the commitment and energy of the membership of Kilkenny CYPSC, Comhairle na nÓg and a range of other stakeholders across the services that work with children, young people and young adults in Kilkenny city and county to identify the key needs and issues of 0-24 years age cohort and to seek to address them.

The aim of the plan is to prioritise actions over the coming 3 years which will foster continuous collaboration between agencies on a range of actions aimed at improving outcomes for children and young people in the county.

The plan was informed by the view and perspectives of children, young people and young adults from the general population. A wide range of consultations were undertaken on behalf of Kilkenny Children and Young People's Services Committee to ensure that the voice of young people from a range of social backgrounds and circumstance and to identify what they consider to be the key issues in their lives.

The process of developing the plan led to a greater understanding by all of us of how we can work together on joint initiatives which is resulting in a shared understanding of the need for services to change in order to meet the complex and varied needs of children, young people, families and communities.

The main aim of Kilkenny CYPSC is to improve interagency cooperation and collaboration for better outcomes for children and young people. Our aim in Kilkenny CYPSC is to continue to promote and work for all children and young people.

Kilkenny CYPSC is interested in contributing to the growing body of information regarding children and young people in Kilkenny, therefore this plan comprises considerable information relating to children and young people in Kilkenny city and county.

This plan is a working document and we welcome feedback in relation to it and are committed to reviewing and amending it throughout the implementation in the light of evidence of more effective models of practice or of emergent need.

I would like to thank Kilkenny CYPSC and the CYPSC subgroup members past and present for their insight, time and dedication to contribute to this plan and actions to date, and in particular acknowledge the work of Marie Kennedy and Clare Murphy, in their roles as previous CYPSC Chairs and Tusla Area Managers.

On behalf of Kilkenny CYPSC, I look forward to better developmental outcomes and a better future for the children and young people of Kilkenny city and county.

---

Roisin Boyd


Area Manager

Tusla – Child and Family Agency

Carlow/Kilkenny/South Tipperary

Chairperson of Kilkenny Children & Young People’s Services Committee

March, 2021



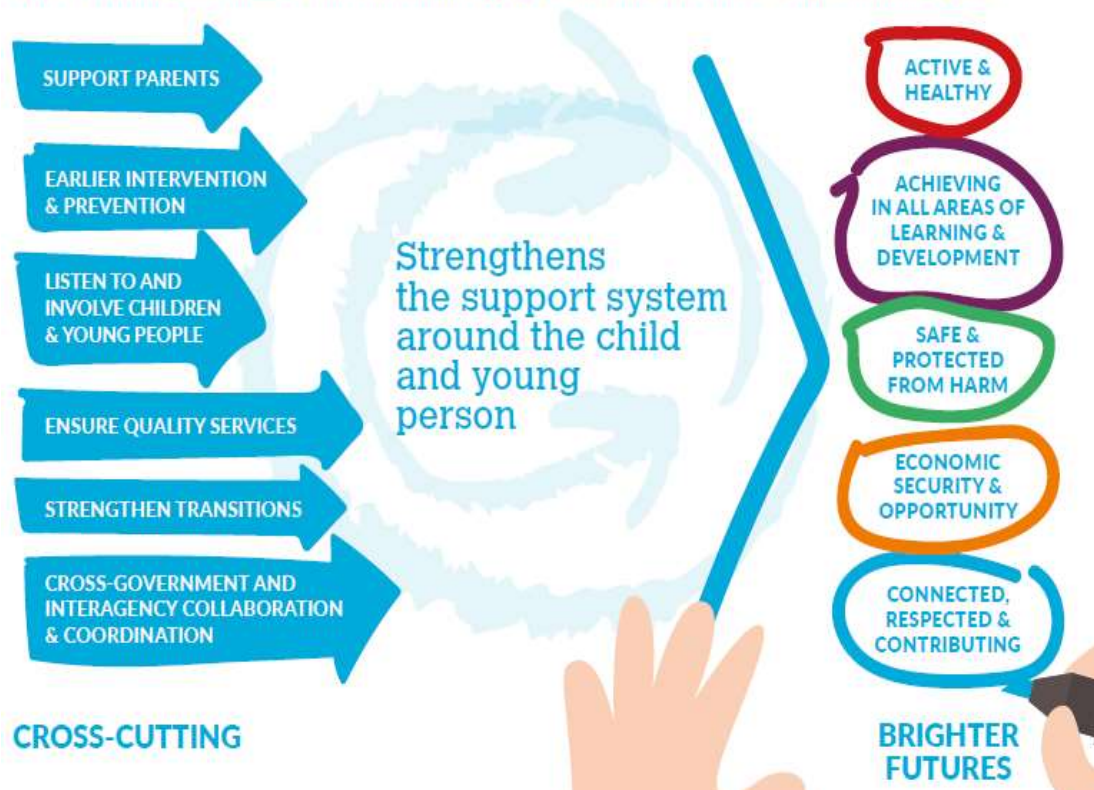
## Section 1: Introduction

### Children and Young People’s Committees

Children and Young People’s Services Committees (CYPSCs) are a key structure identified by Government to plan and co-ordinate services for children and young people in every county in Ireland. The purpose of CYPSCs is to ensure effective inter-agency co-ordination and collaboration to achieve the best outcomes for all children and young people in its area. This is achieved through effective planning, co-ordination and oversight of policy implementation and service provision locally. The CYPSC acts as the structure whereby services can work together in a systematic manner to achieve shared goals and bridge national policy with local provision.

*Better Outcomes Brighter Futures; The National Policy Framework for Children and Young People 2014–2020* sets out five national outcomes and six transformational goals for children and young people (see figure 1 below). The work of CYPSC is framed according to these outcomes and transformational goals. The CYPSC contributes to the achievement of the vision, principles and desired outcomes expressed in *Better Outcomes, Brighter Futures* so that these become a reality for children and young people at local level. Each CYPSC focuses on identifying gaps and supporting synergies in service delivery, leading to the development of a commonly agreed plan for children and young people in its local area.

Figure 1: Five national outcomes for children and young people in relation to the six transformational goals.



(The Department of Children and Youth Affairs *Children and Young People’s Services Committees (CYPSC) ‘Shared Vision, Next Steps’ 2019–2024*)

## Kilkenny Children and Young People's Services Committee

Kilkenny Children and Young People's Services Committee was set up in April 2016 under phase 6 of the development of CYPSCs. It held its inaugural meeting in the County Hall, chaired by Marie Kennedy, then Local Area Manager for Tusla in Carlow/Kilkenny & South Tipperary. The membership of the CYPSC was agreed in line with the guidelines in *The Blueprint for the development of CYPSC (2015 – 2017)* and it began the work of forming a committee and comprised all the relevant agencies recommended in the Blueprint, as well as the local landscape for service provision.

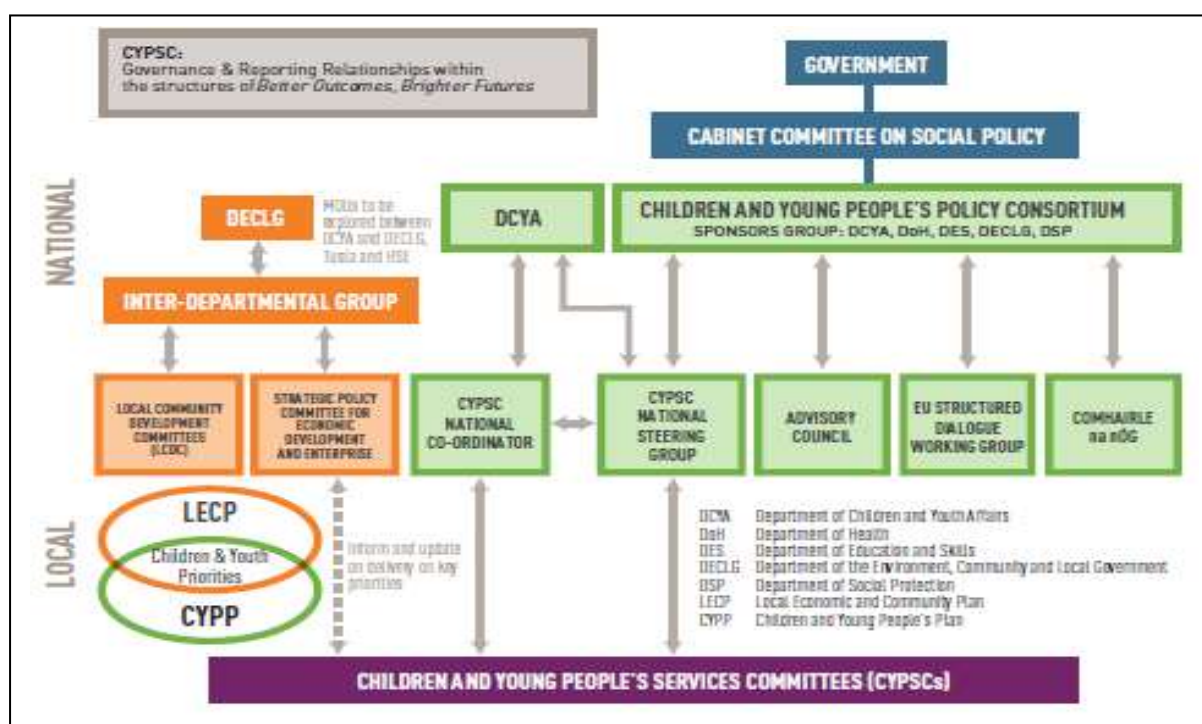
One of the 4 Local authority areas, Piltown LA, includes Ferrybank, which is the 2<sup>nd</sup> largest urban centre in Co. Kilkenny. This part of Co. Kilkenny is served by the Waterford offices of many statutory and community and voluntary agencies (e.g. HSE, Tusla, Dept. of Social Protection, Solas, local drugs prevention projects etc.) This brings particular challenges in coordinating and planning new services and local projects. It was seen that there should, therefore be a representation from a Waterford-based agency and a representative was nominated by the Waterford Tusla Local Area Manager.

The voice of young people 18-24 years was represented by a young person who was very active in local and national youth organisations.

The Comhairle na nÓg has been actively linked with CYPSC from the beginning, with members presenting the work of Comhairle to the CYPSC on an annual basis and the CYPSC Co-ordinator also sits on the Comhairle Advisory Committee.

The Prevention, Partnership and Family Support (PPFS) Steering Group was set up as a subgroup of CYPSC and, in accordance with guidance from the Dept. of Children and Youth Affairs, this group has also incorporated the work of the Outcome 3 (Children are Safe and Protected from Harm) subgroup.

### National governance and reporting relationships of CYPSCs



## Who we are:

### Children and Young People's Services Committee 2021

| Name   | Position / Organisation   |
|--|---|
| Roisin Boyd, <i>Chairperson</i>  | Area Manager, Carlow, Kilkenny and South Tipperary, Tusla Child and Family Agency     |
| Mary Mulholland, <i>Vice Chairperson</i>   | Directors of Services, Kilkenny County Council  |
| Stephen O'Connor   | Community Section, Kilkenny County Council  |
| Sarah Barron   | Kilkenny Carlow Education and Training Board  |
| Sheila Clarke  | National Education Welfare Board  |
| Dr Fiona Cotter  | Carlow Kilkenny HSE Community Services  |
| Colin Keating  | Carlow Kilkenny HSE Substance Misuse Team   |
| Genevieve Crosby   | Carlow Kilkenny HSE Primary Care Psychology   |
| Joan Dunne   | PFFS Manager, Tusla Carlow, Kilkenny and South Tipperary                              |
| Sgt Elaine Dalton  | An Garda Siochana, Protective Service Unit  |
| Mary Mescal  | Ossory Youth  |
| Stephen Murphy   | Fr McGrath, FRC, PPN Family Support Sector  |
| Ber Brophy   | Newpark Close FRC, PPN Family Support Sector  |
| Martin Rafter  | County Kilkenny Leader Partnership  |
| Mary O'Neill   | St John's Junior School, Irish Primary Principals Network (IPPN)                      |
| Cathnia O'Muircheartaigh   | Coláiste Pobal Osraí– National Association of Principals and Deputy Principals (NAPD) |
| Claire McNamara  | Tusla Commissioning Manager, Waterford / Wexford                                      |
| Gretta Murphy  | Kilkenny County Childcare Committee   |
| Breda Harding  | Department of Social Protection   |
| <i>See Appendix 2 for subgroup membership; See Appendix 3 for CYPSC Organigram</i> |   |



## Achievements to date:

Since its set up the Kilkenny CYPSC has been involved in a number of initiatives bringing together various agencies and developing joint actions and consultations

- **Safer Socialising Programme:** An Garda Síochána in Kilkenny had become particularly concerned with some risky behaviour of young people when socialising. They were especially concerned about the overuse of alcohol and the dangers posed to young people when under the influence of alcohol. They set up a subgroup of various agencies and developed a programme for young people highlighting the impacts of alcohol overuse, the need to look out for each other and some practical tips for being safe on a night out. CYPSC was invited onto this subgroup and also provided the funding to produce a video to accompany the programme. The programme was launched in Watergate Theatre which was attended by more than 200 young people. This programme has been rolled out to Transition Year (TY) students in Kilkenny City and County and has also been taken up by Gardaí for use in other counties.
- **Consultations with agencies in 2016 and 2018:** Over 30 agencies providing services to children, young people and families were brought together for a facilitated consultation as part of the work of establishing CYPSC in the county. This gave agencies an opportunity to hear about CYPSC and to help develop the priorities for the development of the Children and Young People's Plan. Almost 100 representatives from the various agencies came together with 6 young people from Comhairle na nÓg to consider and input on the findings of the Sociodemographic Profile and identify the needs for the CYPSC Plan
- **Parent Champion Event:** CYPSC hosted a very successful event for parents in collaboration with the Parenting Champion in the Father McGrath FRC, where over 40 parents had an opportunity to hear and engage with speakers on Parenting, Child-to-Parent Violence and Non- Violent Resistance.
- **Healthy Ireland funding:** The CYPSC developed Healthy Ireland projects which have been rolled out in the community in partnership with Kilkenny Recreation & Sports Partnership, Ossory Youth & Foróige youth organisations and Newpark Close FRC and Father McGrath FRC. The partner organisations recruited 18 targeted families with 40 children across urban & rural areas for the Healthy Streets programme. This healthy nutrition and physical exercise training for all the family was very successful and will be run again when funding is available.

Under the Community Mental Health Fund the CYPSC took the opportunity to bring together the 4 FRCs and the 2 Youth organisations in the county. They worked together to develop innovative programmes to support the mental health children and young people in 7 areas in the county, giving opportunities for both urban and rural children and young people to participate in supportive programmes.

CYPSC also sits on the Healthy Kilkenny Steering Group and ensures there is a coherence between the LCDC and CYPSC Healthy Ireland Plans.
- **Sociodemographic Profile:** Dr Brendan O'Keefe of the Institute for Action Research undertook and extensive research on the sociodemographic profile of the county, with particular emphasis on children, young people and families. The findings have been categorised under the Five National Outcomes for Children. The

research has been widely circulated throughout the county and provides much of the basis for this Children and Young People's Plan

Dr O'Keeffe also conducted 2 consultations with a broad range of agencies during his research.

The findings were presented to the CYPSC Committee and member agencies. [Click here](#) to view this document

- Consultation with children and young people: 'Playing our Part: Our Lives'**  
 Callan Workhouse Union, a consultancy group who use a range of methods to consult with children and young people in a very participatory way carried out this consultation on behalf of the CYPSC. They developed various methods, including games and drama pieces to explore with children and young people what their lives are like and what they identify as their needs. They consulted with over 300 children and young people in preschools, primary and post primary schools, afterschools and third level colleges. This work has helped the CYPSC to develop its Plan. [Click here](#) to view this consultation, 'Playing our Part: Our Lives'  
 This consultation was launched in February 2018 by Minister Zappone, along with the 'Safer Socialising' programme.  
 Comhairle na nÓg also provided input on the plan during its development. The proposals from the subgroups were taken to a special meeting of the Comhairle and there were questions included at the Comhairle AGM to inform the CYPP. Comhairle members also attended the consultations with the agencies and were very active in the discussions to finalise the actions that were finally agreed upon.

## How the Children and Young People's Plan was developed

The first task of the CYPSC was to gather information about the children and families of the county and, as the Census had been held in 2016, a Sociodemographic Profile of the county with specific focus on children and families was commissioned. The Institute for Action Research undertook an extensive piece of research and provided a report spanning all five National Outcomes for Children. This report has informed priorities and actions in this plan.

Dr Brendan O'Keeffe of the Institute conducted 2 consultations with agencies throughout the county in the course of his work, at which he presented his draft findings and gathered further information for inclusion in the report

A key principle for CYPSC is that the voice of the children and young people in the county is heard and informs its work. To this end an extensive and innovative consultation was commissioned. Callan Workhouse Union conducted this piece of work and carried out a very wide-ranging consultation with children and young people of all ages from infancy to 25 years. They used the Mosaic Approach, which involves a range of methods for listening to young children's perspective on their lives and other innovative methodologies including drama, art, a bespoke game and questionnaires. Children, young people and young adults in both urban and rural environments were consulted in group settings and individual interviews. The final report is called Playing Our Part: Our Life and has also informed this Plan

A number of subgroups were also set up, which looked at the issues facing children and families in the county, under the 5 National Outcomes for Children. These subgroups have membership from a wide range of agencies working with children, young people and their

families in the county. The subgroups put together proposals which were then fed back to the main CYPSC Committee.

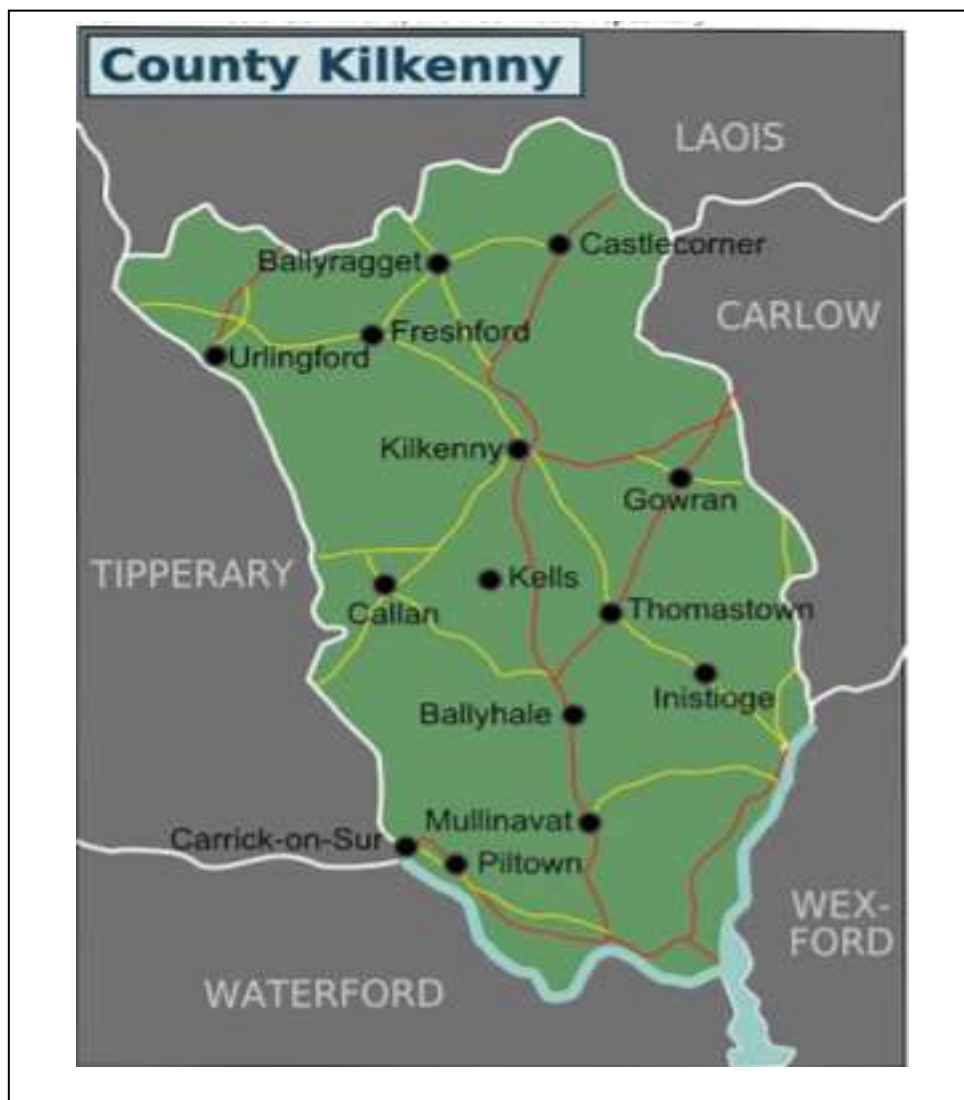
The information gathered from the Sociodemographic Profile, the consultation with children and young people and the feedback from the subgroups was then taken to 2 facilitated sessions where the priorities were agreed. Young people from Comhairle na nÓg were included in these consultations and continue to monitor the development of the Plan.

The Kilkenny Children and Young People's Plan (CYPP) was developed from the information provided from all the information gathered and agreed by the CYPSC in March 2020.

A range of local and national plans and policy documents consulted in the writing of this Plan are listed in Appendix 4.

## Section 2 – Socio-Demographic Profile of County Kilkenny

### Geographic Location:



County Kilkenny is situated in the South East of Ireland. It has a land area of 2,062 square kilometres and a population of 99,118 (2016).

The main urban centre is Kilkenny City and Environs. The next largest towns in County Kilkenny are the Ferrybank area, adjacent to Waterford City, and the district towns of Callan, Castlecomer, Graiguenamanagh and Thomastown.

The county has borders with Carlow, Laois, Wexford, Waterford and Tipperary. When the county is mapped for deprivation levels there is evidence of a 'border effect,' with areas of deprivation straddling county boundaries, particularly the villages in the north-east and north-west of the county, the east of the county along the Carlow – Wexford border and the south-west of the county.

The M9 motorway, which provides road connectivity to Dublin and Waterford, runs through the county and has an impact on the county, providing opportunities for commuting to work in surrounding counties and for students attending third level education in Dublin, Waterford and Carlow. There is no third level education institution in County Kilkenny.

## Population

According to the 2016 Census of Population, County Kilkenny has a total population of **99,232**. Children and young people represent one-third of the population. The following table presents the total number of persons in age cohorts, and expresses these as a percentage of the total population for County Kilkenny and for the South-East Region<sup>1</sup>.

### Inter Censal Change

Between 2002 and 2016, the population of the State increased by over one-fifth (20.8%), from 3.94 million to 4.76 million. This gives Ireland one of the fastest rates of population growth in the EU, and it is associated with an above average birth rate and with in-migration. The growth rate during the most recent inter-censal period (2011 – 2016) was 3.78%. As the following table shows, Kilkenny's level of population increase exceeded the national and regional levels.

**Table 1: Population Levels and Percentage Change in Kilkenny the Southeast Region and the State, 2002 – 2016**

|                 | Population 2002 | Population 2006 | Population 2011 | Population 2016 | % change 2002-2016 | % change 2011-2016 |
|-----------------|-----------------|-----------------|-----------------|-----------------|--------------------|--------------------|
| County Kilkenny | 80,339          | 87,558          | 95,419          | 99,232          | 23.5%              | 4.0%               |

<sup>1</sup> The South-East Region comprises the Counties of Carlow, Kilkenny, Waterford and Wexford. For statistical purposes, it also includes the former local authority division of South Tipperary. The Regional Authority was abolished under the Local Government (Reform) Act, 2014.

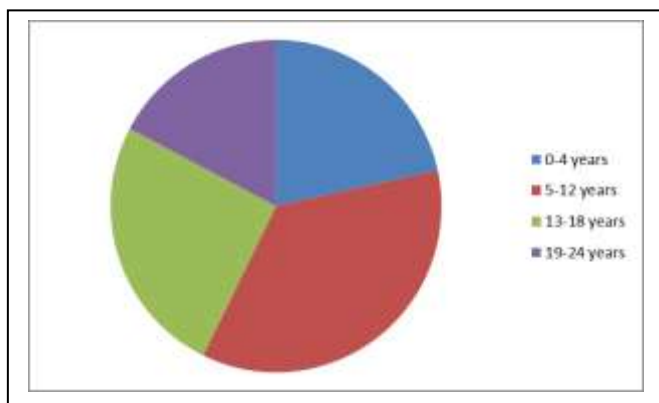
|            |           |           |           |           |       |      |
|------------|-----------|-----------|-----------|-----------|-------|------|
| Carlow     | 46,014    | 50,349    | 54,612    | 56,932    | 23.7% | 4.2% |
| Waterford  | 101,546   | 107,961   | 113,795   | 116,176   | 14.4% | 2.1% |
| Wexford    | 116,596   | 131,749   | 145,320   | 149,722   | 28.4% | 3.0% |
|            |           |           |           |           |       |      |
| South-East | 344,495   | 377,617   | 409,146   | 422,062   | 22.5% | 3.2% |
|            |           |           |           |           |       |      |
| Ireland    | 3,942,078 | 4,239,848 | 4,588,525 | 4,761,865 | 20.8% | 3.8% |

According to the 2016 Census of Population, County Kilkenny has a total population of **99,232**. Children and young people represent one-third of the population. The following table presents the total number of persons in age cohorts, and expresses these as a percentage of the total population for County Kilkenny and for the South-East Region<sup>2</sup>.

**Table 2: Total Number of Children and Young People, by Age Cohort in County Kilkenny and the South-East Region, 2016**

|                                      | 0-4 years | 5-12 years | 13-17 years | 18-24 years | 0-<18 years | 0-24 years |
|--------------------------------------|-----------|------------|-------------|-------------|-------------|------------|
| County Kilkenny (absolute numbers)   | 7,112     | 11,773     | 7,059       | 7,033       | 25,944      | 32,977     |
| County Kilkenny (% of population)    | 7.17%     | 11.86%     | 7.11%       | 7.09%       | 26.14%      | 33.23%     |
|                                      |           |            |             |             |             |            |
| South-East Region (absolute numbers) | 29,109    | 50,683     | 29,517      | 31,532      | 109,309     | 140,841    |
| South-East Region (% of population)  | 6.90%     | 12.01%     | 6.99%       | 7.47%       | 25.90%      | 33.37%     |

**Figure 1: Population Spread of Children and Young People, by Age Cohort in County Kilkenny, 2016**



As the table shows, County Kilkenny has proportionately more infants (children aged <4) than the region as a whole. The proportion of school-aged children is similar to the regional level, while the proportion of young adults (persons aged 18 to 24) is slightly below the regional average.

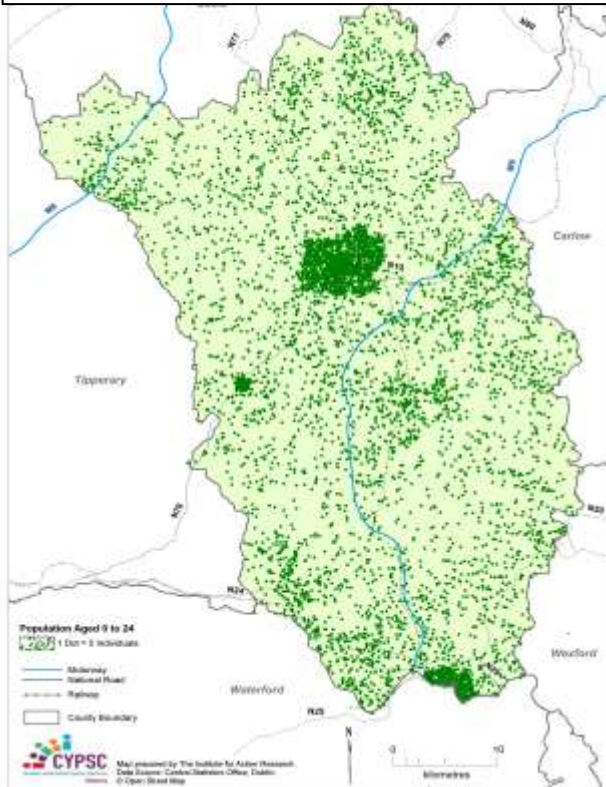
Across the four Municipal Districts<sup>3</sup> that constitute County Kilkenny, the proportion of children and young people (0 to 18 years) in the population ranges from 24% in Kilkenny

<sup>2</sup> The South-East Region comprises the Counties of Carlow, Kilkenny, Waterford and Wexford. For statistical purposes, it also includes the former local authority division of South Tipperary. The Regional Authority was abolished under the Local Government (Reform) Act, 2014.

The four local authority divisions in the County are: Castlecomer, Kilkenny City East, Kilkenny City West and Piltown. The delineation of these was determined by the Local Area Boundary Committee Report (2013). This can be accessed on:

<http://www.housing.gov.ie/sites/default/files/migrated-files/en/Publications/LocalGovernment/Administration/FileDownload%2C33299%2Cen.pdf>.

**Map 1: No. of Persons 0-24 years in Co. Kilkenny at ED Level 2016**



City West to 28% in Piltown. The highest proportion of persons aged 0 to 24 years also reside in Piltown - 35% percent, compared with 31% in Kilkenny City West. This dot density map shows the particular clusters of children and young people and highlights the significance of the urban centres (Kilkenny City and Ferrybank) and the many smaller towns and villages across the county. This map demonstrates the dispersed nature of settlements throughout Kilkenny. It also points to the need for Kilkenny CYPSC to have an active role in ensuring that service delivery for these age groups are also coordinated by agencies serving the South of the County.

Unlike in other counties in which settlement is more concentrated in particular locations and/or there are

peripheral areas, Kilkenny is more spatially balanced and has a better demographic and social mix. Thus, agencies need to continue to have a presence, and services need to be provided across urban, peri-urban and rural areas.

There is an above average proportion of infants and toddlers (children aged up to 4 years) in the environs of Kilkenny City, Ferrybank and Mooncoin. The highest proportions of children aged under four are rural communities, scattered across the county, rather than in the urban area. This implies a need for rurally-based services such as parent and toddler groups and pre-school facilities. The spatial pattern in respect of children / young people (12 to 17 year olds) in the second-level school aged cohort shows no notable above or below average geographical clusters.

These spatial patterns underscore the importance of transport service provision (e.g., public transport connectivity and school transport), outreach work and rural-proofing in ensuring the effective delivery of services to children and young people across County Kilkenny.

The proportion of persons aged 18 to 24 shows that the county has a slightly lower proportion of persons in this age cohort than is the case regionally and nationally, with just two notable clusters with above average proportions of persons in this cohort – i.e. the northeast (includes Castlecomer and the surrounding areas) and southeast of the county.

There is no third-level education facility in the county and young people have to leave the county to go to college. Research also shows that people with a third level qualification live within a 10 mile radius of Kilkenny city and Waterford city.



Overall the data presented and the patterns displayed, in respect of persons aged 0 to 17 years and 0 to 24 years, show a strong presence of children throughout the county including in many rural areas.

The below table shows that pre-family households and those with pre-school children represent 17.3% of families in County Kilkenny.

**Table 3: Percentage of Families in each of the Standard Sequential Family Phases, in County Kilkenny, 2016**

|               | Pre-family | Pre-school | Early school | Pre-adolescent | Adolescent | Adult | Empty Nest | Retired |
|---------------|------------|------------|--------------|----------------|------------|-------|------------|---------|
| % of families | 7.6%       | 9.7%       | 12.0%        | 11.6%          | 13.1%      | 25.0% | 10.8%      | 10.2%   |

The research shows that the areas with the highest proportions of households classified as pre-family and pre-school are in and around Kilkenny City, especially its immediate environs, and in dispersed locations across the county, including Urlingford, Callan, Knocktopher, Thomastown and Paulstown. These data suggest an ongoing need for family-related services in these communities, including schools and childcare.

## Youth Dependency Ratio

Youth Dependency Ratio i.e. *number of young people (aged 0 to 14 years) in relation to the number of persons in the 'working age cohort' (aged 15 to 64 years).*

**County Kilkenny: 34.3%.**

**State Ratio: 32.3%.**

Some parts of the county have above average proportions of both young (aged 0 to 14) and older (aged 65+ years) people. These include rural areas between Freshford and Johnstown, the area between Mooncoin and Waterford City and areas east of Thomastown and Bennetsbridge. Thus, there may be a basis for inter-generational projects in these communities.

## Nationality, Ethnicity and Language

Irish society has become more ethnically diverse over the past two decades. Non-Irish and non-UK nationals now account for over nine percent (9%) of the State's population. The corresponding figures for the South-East Region and for County Kilkenny are lower, at 6.67% and 6.37% respectively.

The areas with the highest proportions of non-Irish and non-UK nationals are Ferrybank (16%) and Kilkenny City (15%). Urlingford records a relatively high level (10.2%),

associated with employment in transport and haulage. Rosbercon, which adjoins the town of New Ross, records a value of nine percent. Apart from these locations, the proportion of non-Irish and non-UK nationals is generally below the national average, with the lowest values tending to be in rural communities in South Kilkenny.

Co. Kilkenny does not have any International Protection Accommodation Centres but has provided UN re-settlement programme for 73 Sudanese and 140 Syrian Refugees throughout the county.

**Table 4: Membership of Ethnic Minorities in Absolute Numbers and as a Percentage<sup>4</sup> of the Population in County Kilkenny, Regionally and Nationally, 2016**

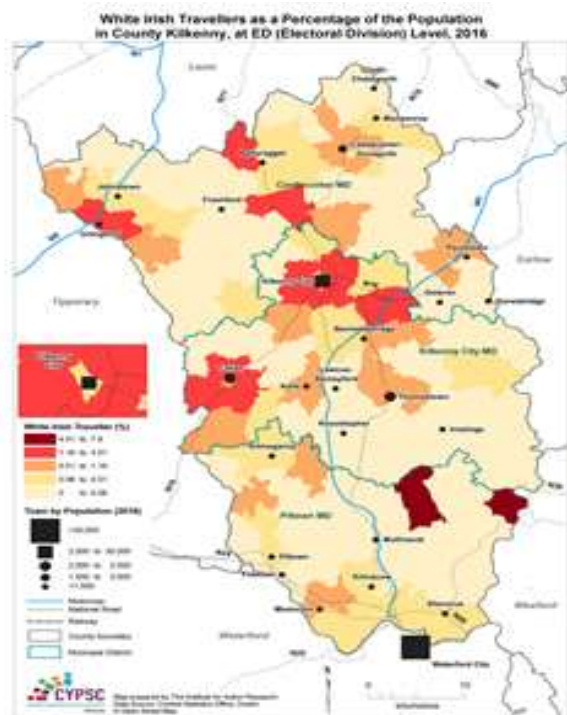
|                                     |     | <b>White Irish Traveller</b> | <b>Other White</b> | <b>Black or Black Irish</b> | <b>Asian or Asian Irish</b> | <b>Other</b> |
|-------------------------------------|-----|------------------------------|--------------------|-----------------------------|-----------------------------|--------------|
| <b>County Kilkenny</b>              | No. | 554                          | 7271               | 730                         | 979                         | 935          |
|                                     | %   | 0.6%                         | 7.5%               | 0.8%                        | 1.0%                        | 1.0%         |
| Carlow                              | No. | 511                          | 5192               | 590                         | 721                         | 690          |
|                                     | %   | 0.9%                         | 9.4%               | 1.1%                        | 1.3%                        | 1.2%         |
| Waterford City and County           | No. | 517                          | 9250               | 1531                        | 1877                        | 1324         |
|                                     | %   | 0.5%                         | 8.3%               | 1.4%                        | 1.7%                        | 1.2%         |
| Wexford                             | No. | 1508                         | 12214              | 414                         | 1046                        | 1454         |
|                                     | %   | 1.0%                         | 8.4%               | 0.3%                        | 0.7%                        | 1.0%         |
| <b>South-East</b>                   | No. | 3093                         | 33927              | 3265                        | 4623                        | 4403         |
|                                     | %   | 0.8%                         | 8.3%               | 0.8%                        | 1.1%                        | 1.1%         |
| <b>Ireland</b>                      | No. | 30987                        | 446727             | 64639                       | 98720                       | 7060         |
|                                     | %   | 0.7%                         | 9.8%               | 1.4%                        | 2.2%                        | 1.5%         |
| <i>LA Divisions within Kilkenny</i> |     |                              |                    |                             |                             |              |
| Castlecomer                         | No. | 67                           | 880                | 38                          | 115                         | 139          |
|                                     | %   | 0.3%                         | 3.9%               | 0.2%                        | 0.5%                        | 0.6%         |
| Kilkenny City East                  | No. | 200                          | 2428               | 211                         | 275                         | 314          |
|                                     | %   | 0.8%                         | 9.4%               | 0.8%                        | 1.1%                        | 1.2%         |
| Kilkenny City West                  | No. | 190                          | 2287               | 262                         | 466                         | 334          |
|                                     | %   | 0.8%                         | 9.2%               | 1.1%                        | 1.9%                        | 1.3%         |
| Piltown                             | No. | 100                          | 1676               | 219                         | 123                         | 148          |
|                                     | %   | 0.4%                         | 7.1%               | 0.9%                        | 0.5%                        | 0.6%         |

<sup>4</sup> Persons whose ethnicity was 'not stated' were excluded in the calculation of the percentage values.



|            |     |     |     |     |     |    |     |    |
|------------|-----|-----|-----|-----|-----|----|-----|----|
| Number     | 92  | 85  | 59  | 60  | 60  | 37 | 149 | 12 |
| Percentage | 17% | 15% | 11% | 11% | 11% | 7% | 27% | 2% |

The data presented in the table above illustrate the lower life expectancy experienced by Irish Travellers, relative to the rest of the Irish population.



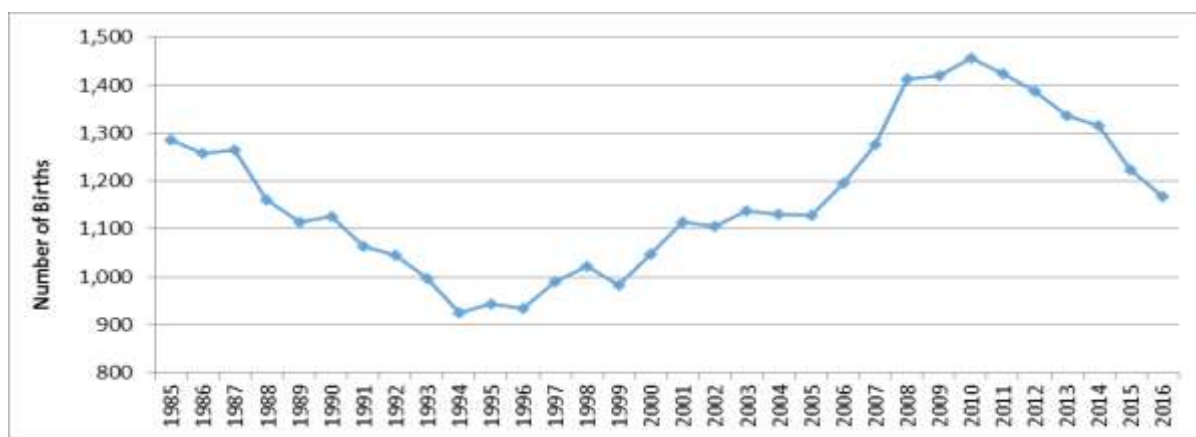
**Map 3: White Irish Travellers as a Percentage of the Population, 2016**

## Health

### Childbirth, Babies and Infants

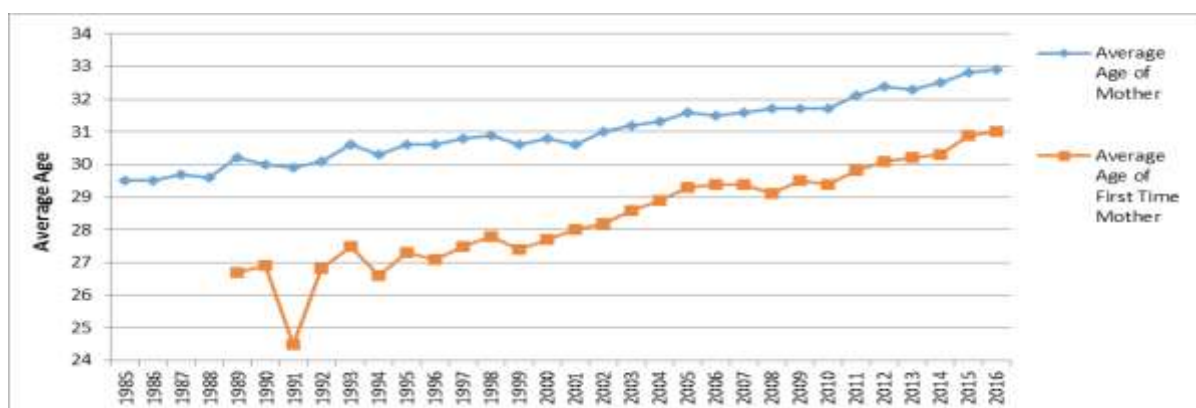
As the following graph shows, the number of persons born in Kilkenny (as defined by mothers being domiciliary in the county) increased considerably from the mid-1990s to 2010, but has fallen every year since then. This is reflective of the national trend.

**Figure 3: Number of Babies Born to Mothers resident in County Kilkenny, 1985 – 2016**



County Kilkenny also reflects the national trend in respect of the increased age of mothers. The following graph shows the rise year-on-year since the mid-1980s. Over a thirty-year period, the mean age for mothers giving birth has increased from 29.5 years to 32.9 years. During the same timeframe, the mean age of first-time mothers increased from 26.7 years to 31 years.

**Figure 4: Average Age of All Mothers and First-Time Mothers in County Kilkenny, 1985 – 2016**



The average age of mothers is rising, (Fig. 4) in general. In 2017 there were nine births to mothers aged 17 or younger. This represents a rate of 7.4 per 1,000, and is well in excess of the national rate of 4.6 per 1,000.

## Birth Weight

In Ireland, most babies (64.1%) have a birthweight of between 3.5 and 4kg, with a small number are born below this weight. The percentage of babies born weighing less than 2.5kg (live and still births), in 2015 in County Kilkenny was 5.1%. This is below the national average of 5.9%.

## Infant Screening and Breastfeeding rates

On average, ninety-five percent of babies in Community Healthcare Organisation (CHO5), which includes County Kilkenny, are screened by the time they reach ten months. Kilkenny has a slightly above average success rate in respect of Public Health Nurse visits to mothers; the percentage new-born babies visited by a PHN within 72 hours of hospital discharge is **99.7% in Carlow/ Kilkenny**, compared with **97.5% nationally**.

In 2015, **57% of infants were being exclusively breastfed** on discharge from hospital in Co. Kilkenny, compared to **47% nationally**. Overall, taking in those having combined breast and bottle feeding (0.7%) the total for county Kilkenny (58.3%) is very close to the national average (58.0%)

## Immunisation Rates

Levels of immunisation among school-aged children in County Kilkenny are similar to those for Ireland as a whole, and while they are high relative to many other countries, they remain somewhat below the World Health Organisation (WHO) target of 95% per cohort. The table shows a fall-off in uptake from the first to the second HPV dose, as well as the decline over time. This is not just a Kilkenny phenomenon. It is prevalent across Ireland and beyond.

**Table 6: Levels of Immunisation among Primary and Second-Level School Pupils in County Kilkenny, 2015 – 2017**

| 2015/2016               |              | 2016/2017         |              |
|-------------------------|--------------|-------------------|--------------|
| <b>Primary School</b>   |              |                   |              |
| <b>HPV Dose 1</b>       | <b>88.1%</b> | <b>HPV Dose 1</b> | <b>61%</b>   |
| <b>HPV Dose 2</b>       | <b>80.6%</b> | <b>HPV Dose 2</b> | <b>54%</b>   |
| <b>Tdap</b>             | <b>93.3%</b> | <b>Tdap</b>       | <b>92%</b>   |
| <b>Men C</b>            | <b>92.4%</b> | <b>Men C</b>      | <b>90%</b>   |
| <b>Secondary School</b> |              |                   |              |
| <b>MMR</b>              | <b>97.4%</b> | <b>MMR</b>        | <b>96.1%</b> |
| <b>4-in-1</b>           | <b>97.3%</b> | <b>4-in-1</b>     | <b>96.5%</b> |

## Disability

The following table presents specific data on children and young people with disabilities. The proportion of teenagers and young adults with a disability is considerably higher than among children

**Table 7: Types of Disabilities among Children and Young People in County Kilkenny, 2016.**

|                                 | <b>0 - 14 years</b> | <b>15 to 19</b> | <b>20 to 24</b> |
|---------------------------------|---------------------|-----------------|-----------------|
| Total persons                   | 21,766              | 6,548           | 4,663           |
| Total persons with a disability | 1,137               | 627             | 418             |

|   |              |              |              |
|---|--------------|--------------|--------------|
| % with a Disability   | 5.2%         | 9.6%         | 9.0%         |
| Blindness or a serious vision impairment                                    | 68           | 33           | 29           |
| Deafness or a serious hearing impairment                                    | 81           | 31           | 24           |
| A condition that substantially limits one or more basic physical activities | 206          | 77           | 60           |
| An intellectual disability  | <b>354</b>   | 173          | 119          |
| Difficulty in learning, remembering or                                      | <b>572</b>   | <b>320</b>   | <b>167</b>   |
| Psychological or emotional condition  | 244          | 158          | 127          |
| Other disability, including chronic illness                                 | <b>362</b>   | 170          | 124          |
| Difficulty in dressing, bathing or getting around inside the home           | 304          | 72           | 51           |
| Difficulty in going outside home alone                                      | 333          | 147          | 87           |
| Difficulty in working or attending school/college                           | 293          | 212          | 145          |
| Difficulty in participating in other activities                             | 367          | 186          | 112          |
| <b>Total disabilities</b>   | <b>3,184</b> | <b>1,579</b> | <b>1,045</b> |

The following are the 2015 levels of particular service registrations in comparative context

| <b>Registration</b>                                       | <b>Kilkenny</b>  | <b>Ireland</b>     |
|---|------------------|--------------------|
| Children Registered with a Physical or Sensory Disability | 189 or 7.6/1,000 | 6230 or 5.4/1,000  |
| Children Registered with an Intellectual Disability       | 179 or 7.2/1,000 | 9,066 or 7.9/1,000 |

## Carers

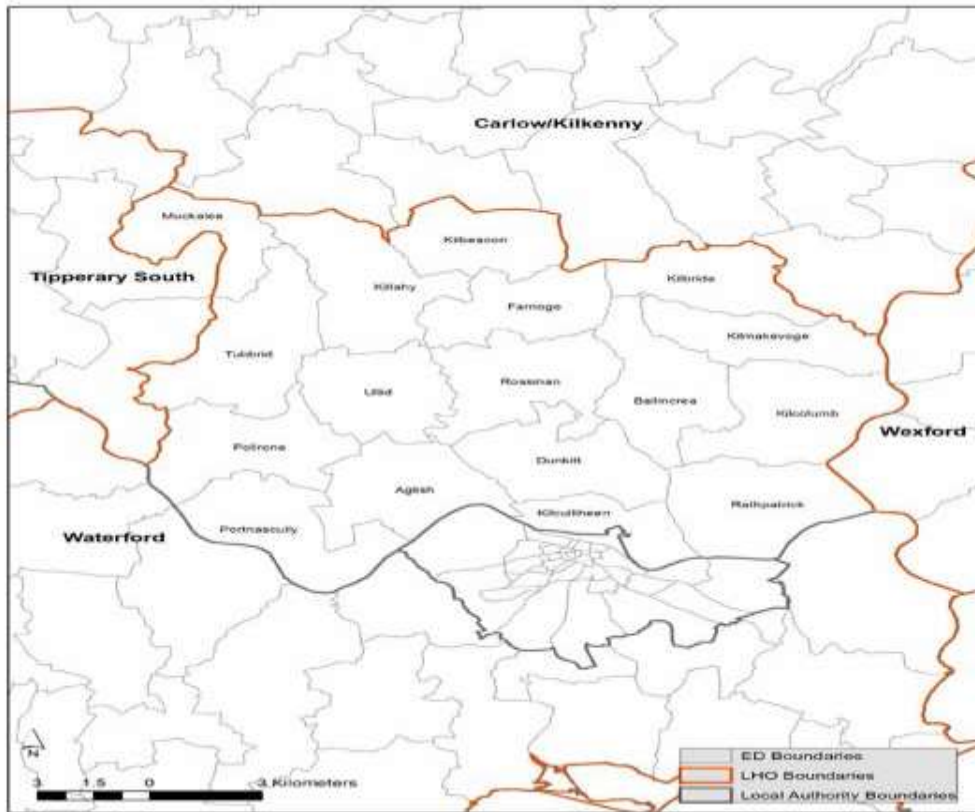
There are 4,321 carers in the county, of whom 39% are male and 61% are female. The proportion of males devoting themselves to caring duties has been increasing steadily over recent decades. There is no record of the number of young people who are in caring roles though anecdotally caring roles are being performed by young people in families throughout the county

## Access to Primary Care

The HSE Local Health Office (LHO) that covers most of County Kilkenny also includes County Carlow, and it has a total population of 140,094, of whom fifty-nine percent live in Kilkenny. A further 16,070 persons in South County Kilkenny come under the Waterford LHO (see Fig. 5). As the data presented here are not available below the LHO level, this profile takes those for the Carlow/Kilkenny LHO, in the main.

There are 8 Primary Care Teams serving Kilkenny city and county and 1 based in Ferrybank, serving the south of the county.

**Figure 5: Electoral Divisions in South County Kilkenny that pertain to the Waterford LHO**



Map supplied by Dr Ronan Foley, Maynooth University.

**Table 10: PCRS - GMS Medical Cards: Number of Eligible Persons in the Carlow/Kilkenny LHO, Gender and Age Group, 2016**

|                                       | Age Cohorts  |              |              |              |              |              |              |              |              |              |              |               |
|---------------------------------------|--------------|--------------|--------------|--------------|--------------|--------------|--------------|--------------|--------------|--------------|--------------|---------------|
|                                       | < 5          | 05-11        | 12-15        | 16-24        | 25-34        | 35-44        | 45-54        | 55-64        | 65-69        | 70-74        | 75 +         | Total         |
| Female                                | 1,417        | 2,656        | 1,589        | 2,679        | 2,880        | 3,481        | 3,310        | 3,001        | 1,705        | 1,871        | 4,076        | <b>28,665</b> |
| Male                                  | 1,524        | 2,878        | 1,581        | 2,465        | 1,946        | 2,874        | 2,911        | 2,979        | 1,470        | 1,742        | 3,061        | <b>25,431</b> |
| <b>Carlow/<br/>Kilkenny<br/>Total</b> | <b>2,941</b> | <b>5,534</b> | <b>3,170</b> | <b>5,144</b> | <b>4,826</b> | <b>6,355</b> | <b>6,221</b> | <b>5,980</b> | <b>3,175</b> | <b>3,613</b> | <b>7,137</b> | <b>54,096</b> |
| Total<br>Population                   | 9,970        | 14,637       | 7,944        | 14,483       | 17,686       | 21,503       | 18,770       | 15,800       | 6,421        | 4,981        | 7,899        | 140,094       |
| Rate per<br>Cohort                    | <b>29%</b>   | <b>38%</b>   | <b>40%</b>   | <b>36%</b>   | 27%          | 30%          | 33%          | 38%          | 49%          | 73%          | 90%          | <b>39%</b>    |



As the above table shows, the level of medical-card coverage among children and young people is below that of adults

**Table 11: Number of Eligible Persons per Scheme in CHO Area 5 by LHO, 2016**

|                                       | Age Cohorts  |              |              |              |              |              |              |              |              |              |              | Total          |
|---------------------------------------|--------------|--------------|--------------|--------------|--------------|--------------|--------------|--------------|--------------|--------------|--------------|----------------|
|                                       | < 5          | 05-11        | 12-15        | 16-24        | 25-34        | 35-44        | 45-54        | 55-64        | 65-69        | 70-74        | 75 +         |                |
| Female                                | 1,417        | 2,656        | 1,589        | 2,679        | 2,880        | 3,481        | 3,310        | 3,001        | 1,705        | 1,871        | 4,076        | <b>28,665</b>  |
| Male                                  | 1,524        | 2,878        | 1,581        | 2,465        | 1,946        | 2,874        | 2,911        | 2,979        | 1,470        | 1,742        | 3,061        | <b>25,431</b>  |
| <b>Carlow/<br/>Kilkenny<br/>Total</b> | <b>2,941</b> | <b>5,534</b> | <b>3,170</b> | <b>5,144</b> | <b>4,826</b> | <b>6,355</b> | <b>6,221</b> | <b>5,980</b> | <b>3,175</b> | <b>3,613</b> | <b>7,137</b> | <b>54,096</b>  |
| Total Population                      | 9,970        | 14,637       | 7,944        | 14,483       | 17,686       | 21,503       | 18,770       | 15,800       | 6,421        | 4,981        | 7,899        | <b>140,094</b> |
| Rate per Cohort                       | <b>29%</b>   | <b>38%</b>   | <b>40%</b>   | <b>36%</b>   | 27%          | 30%          | 33%          | 38%          | 49%          | 73%          | 90%          | <b>39%</b>     |

## Education

**Table 12: Children and Young People in Education in Co. Kilkenny, 2019/2020**

|                      | No. of schools | No of Enrolments |
|----------------------|----------------|------------------|
| Early years Services | 99             | 3923 (2018/19)   |
| Primary schools      | 69             | 11,238           |
| Post-primary schools | 15             | 8,024            |
| Special Schools      | 5              | 225              |

**Table 13: Educational Attainment Levels by Gender, as measured by the Proportion of Persons<sup>5</sup> with Primary Education Only and Persons with a Third Level Qualification**

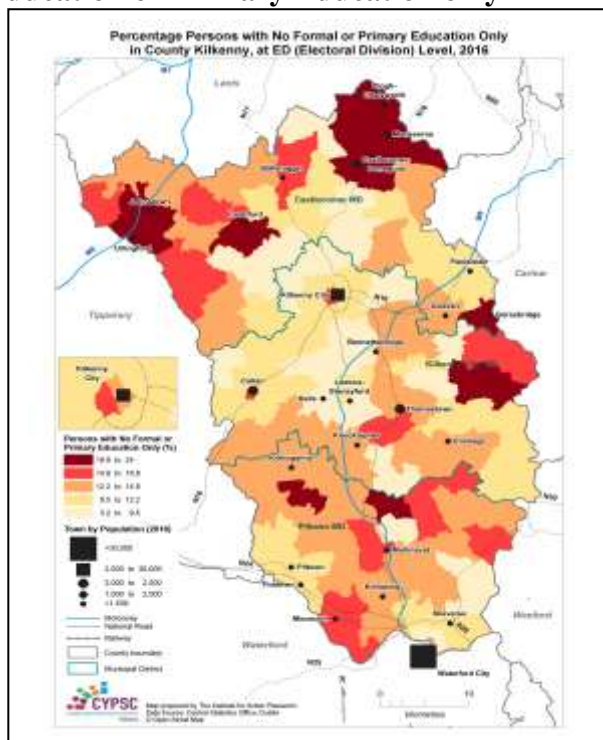
| Geography   | Primary Education Only or No Formal Education |         |             | Third Level Qualification |         |             |
|-------------|---|---------|-------------|---------------------------|---------|-------------|
|             | Males   | Females | All Persons | Males                     | Females | All Persons |
| Kilkenny    | 14.7%   | 11.3%   | 13.0%       | 21.5%                     | 31.2%   | 26.4%       |
| Carlow      | 16.5%   | 13.0%   | 14.7%       | 18.8%                     | 26.3%   | 22.6%       |
| Waterford   | 15.0%   | 12.8%   | 13.9%       | 23.1%                     | 28.7%   | 25.9%       |
| Wexford     | 18.3%   | 14.9%   | 16.6%       | 16.9%                     | 24.3%   | 20.7%       |
| S.E. Region | 16.3%   | 13.2%   | 14.7%       | 19.9%                     | 27.4%   | 23.7%       |
| State       | 14.4%   | 12.3%   | 13.3%       | 27.6%                     | 33.1%   | 30.4%       |

**Map 4** illustrates, educational disadvantage, as manifest by persons with a low level of educational attainment, is more prevalent in the northwest (Freshford, Urlingford and

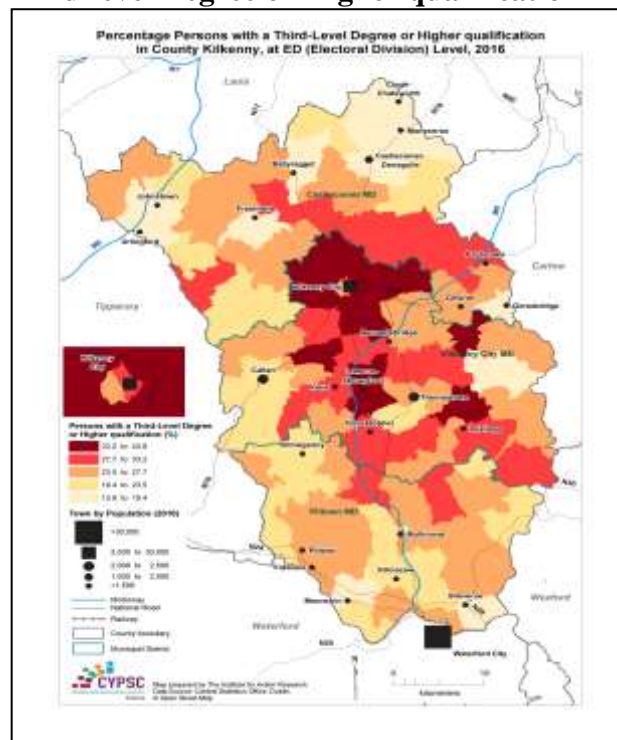
<sup>5</sup> Calculations are based on the proportion of the population aged 15+ that has completed formal full-time education.

Johnstown), the northeast (Clough, Castlecomer and Moneenroe) and in the east of the county (Goresbridge and adjoining rural areas) than elsewhere.

**Map 4: Percentage Persons with no Formal Education or Primary Education only**



**Map 5: Percentage of Persons with a Third-level Degree or Higher qualification**



**Map 5** illustrates the proportion of the population with a third level qualification. It shows the contrasting abilities of Waterford City and Kilkenny City to generate graduate-level employment and/or attract graduates to live locally - Waterford City has much less of an impact on South Kilkenny than Kilkenny City has environs.

The following table lists the ten EDs that have the highest proportions of persons with primary education only (or no formal education). This further confirms the relative disadvantage of the north of the county.

**Table 14: The Ten Electoral Divisions with the Highest Levels of Persons (aged 15+) whose highest level of educational attainment is Primary Education**

| ED          | Percentage with Primary Education Only | ED             | Percentage with Primary Education Only |
|-------------|--|----------------|--|
| Goresbridge | 24.0%                                  | Clough         | 20.7%                                  |
| Freshford   | 22.0%                                  | Castlegannon   | 20.5%                                  |
| Moneenroe   | 21.1%                                  | Graiguenamangh | 20.0%                                  |
| Boolyglass  | 20.9%                                  | Urlingford     | 19.9%                                  |
| Castlecomer | 20.8%                                  | Johnstown      | 18.8%                                  |

The geographical spread of DEIS schools in the county does not align with the area of greatest educational need, as can be seen by comparing the information in tables 14 and 15.

**Table 15: DEIS Schools in County Kilkenny, 2018**

| Level        | School                 | Location       | Boys | Girls | Total Enrolment <sup>6</sup> |
|--------------|------------------------|----------------|------|-------|------------------------------|
| Primary      | S N Muire Gan Smal     | Graiguenamangh | 41   | 126   | 167                          |
|              | SN na Buachaillí       | Graiguenamangh | 80   | 0     | 80                           |
|              | St John's Infants N S  | Kilkenny City  | 94   | 127   | 221                          |
|              | St John's Senior NS    | Kilkenny City  | 84   | 107   | 191                          |
|              | S N An Moinin Rua      | Moneenroe      | 52   | 57    | 109                          |
| Post-Primary | Duiske College         | Graiguenamangh | 64   | 71    | 135                          |
|              | Coláiste Mhuire        | Johnstown      | 224  | 285   | 509                          |
|              | City Vocational School | Kilkenny City  | 62   | 97    | 159                          |
|              | Coláiste Cois Siúire   | Mooncoin       | 54   | 91    | 145                          |
|              | Grennan College        | Thomastown     | 158  | 174   | 332                          |

#### Absences and Retention levels

While absenteeism from school remains a significant challenge, a longitudinal analysis of the data shows a downward trend over the past decade. National level research undertaken for Tusla<sup>7</sup> indicates that absentee levels are higher in urban areas, rather than in the countryside and are higher in DEIS schools, relative to others. Table 16 shows that absentee rates in levels are lower in Kilkenny than the national rate, while those at post-primary are higher.

**Table 16: Percentage of School Children / Students who were absent from school for 20 days or more year in the school year 2013 – 2014**

|          | Primary Level | Second Level |
|----------|---------------|--------------|
| Kilkenny | 8.4%          | 17.5%        |
| Ireland  | 10.9%         | 15.8%        |

The data for school retention shows that the retention rate in Kilkenny is slightly above the national average (Table 17)

**Table 17: Leaving Certificate Retention Rate for 2012 school entry cohort**

|          | Retention Rate |
|----------|----------------|
| Kilkenny | 92.6%          |
| Ireland  | 91.5%          |

<sup>6</sup> School Year 2016-2017

<sup>7</sup> Millar, D (2016) *School Attendance Data from Primary and Post-Primary Schools 2015/16, [under Section 21(6) of the Education (Welfare) Act, 2000] - Analysis and Report to the Child and Family Agency.*

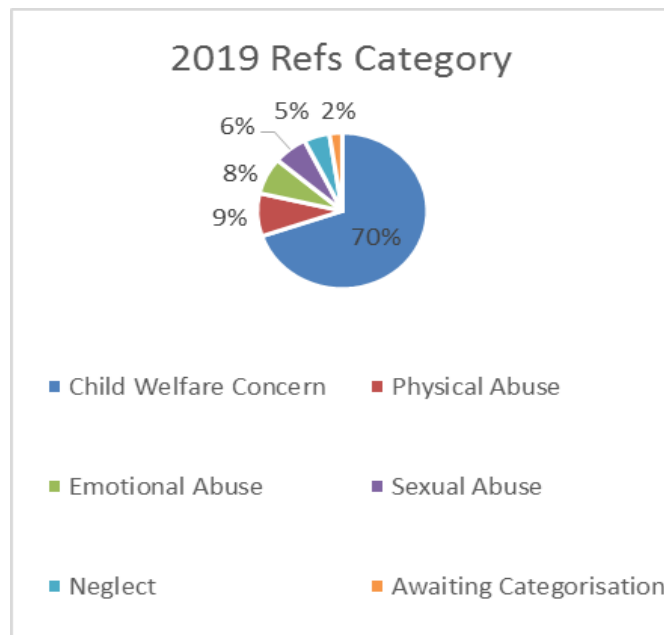
## Safe and Protected

### Domestic Abuse (2018)

|  |     |
|--|-----|
| Total Referrals to Amber refuge:       | 371 |
| Total no. children received a service: | 125 |
| Total no. of women accommodated:       | 69  |
| Total no. children accommodated:       | 96  |

### Tusla Services (2019)

|  |      |
|--|------|
| Total no. children in care:                              |      |
| Kilkenny city:   | 99   |
| Ferrybank & South Kilkenny                               | 33   |
| Callan:  | 11   |
| Requests supports to PPFS:                               | 149* |
| Requests supports to PPFS<br>Ferrybank & South Kilkenny: |      |
| No. of Meitheals:  | 65   |
| No. of Meitheals in<br>Ferrybank & South Kilkenny:       | 26*  |



**Figure 6: Categories of referrals to Social Work in Carlow/Kilkenny/South Tipperary**

The following observations accompanied the Tusla analysis of statistics for Carlow/Kilkenny/South Tipperary for 2019:

- Neglect remains the most prevalent category.
- The average age of children listed in 2019 was 7.4yrs
- The ethnic mix of the CKST CPNS continues to remain out of proportion with the general population statistics. 32% of children active during 2019 are from an ethnic background other than white Irish – compared to just 3% of the Irish population in general.
- Domestic abuse was the most recorded reason across the area placing children at risk. This was particularly evident in Carlow/Kilkenny

### Youth Justice

**Table 18: Selected Offences Committed by Children and Young People in the Kilkenny Division, 2015 – 2017<sup>8</sup>**

| Offences         |                  | Years |      |      |
|------------------|------------------|-------|------|------|
| Type of Offence  | Committed by     | 2015  | 2016 | 2017 |
| Drug and Alcohol | Persons aged <18 | 27    | 48   | 29   |
|                  | Persons aged 18  | 271   | 285  | 210  |

<sup>8</sup> Data for 2017 are up to the end of November.

\* Draft figures

|                       |                             |     |     |     |
|-----------------------|-----------------------------|-----|-----|-----|
| Offences              | to 24 years                 |     |     |     |
| All Criminal Offences | Persons aged <18            | 243 | 295 | 285 |
|                       | Persons aged 18 to 24 years | 621 | 598 | 470 |

## Substance Misuse

**Table 19: Numbers<sup>9</sup> of Children and Young People accessing Treatment for Substance Misuse in County Kilkenny in 2015/16 and Substance treated.**

| Substance  | Age Cohort |           | All Persons Aged <24 |
|--|------------|-----------|----------------------|
|  | Under 18   | 18 to 24  |                      |
| Alcohol  |            | 16        | 16                   |
| Cannabis - unspecified                                   | >10        | >10       | >10                  |
| Cocaine hydrochloride (coke)                             |            | >10       | >10                  |
| Diazepam   |            | >10       | >10                  |
| Heroin - ILLICIT   |            | 15        | 15                   |
| Marihuana  | 22         | 36        | 58                   |
| MDMA   |            | >10       | >10                  |
| Petrol   | >10        |           | >10                  |
| Stimulant - unspecified excluding cocaine or amphetamine |            | >10       | >10                  |
| <b>Total</b>   |            | <b>87</b> | <b>112</b>           |

Across both age cohorts, marijuana is the most commonly-abused drug. Among those aged 18 to 24 years, this is followed by alcohol and heroin

## Economic Security

### Deprivation Index

The Pobal HP Index provides a measure of affluence and deprivation. The table below shows the overall deprivation scores for County Kilkenny between the 2006 and 2016 Censuses. The overall figure of -0.33 is below the level of the state as a whole, which has a value of +0.6 and in line with the regional average of -0.3. However, Table 21 below shows that there are areas of severe deprivation in both the city and county.

**Table 20: Pobal HP Deprivation Scores for Co. Kilkenny 2006, 2011, 2016**

| County | Co. Kilkenny |
|--------|--------------|
|--------|--------------|

<sup>9</sup> It is not possible to provide specific numbers when values are less than ten.

|                           |                          |
|---------------------------|--------------------------|
| Pobal HP Index 2006       | -0.48                    |
| Pobal HP Description 2006 | Marginally below average |
| Pobal HP Index 2011       | -1.01                    |
| Pobal HP Description 2011 | Marginally below average |
| Pobal HP Index 2016       | -0.33                    |
| Pobal HP Description 2016 | Marginally below average |

**Table 21: Areas of greatest deprivation in County Kilkenny (CSO 2016)**

| Area  | Pobal HP Index Value |
|---|----------------------|
| Kilkenny City (local Authority housing areas) | -11.91               |
| Graignamangh                                  | -9.32                |
| Urlingford                                    | -12.37               |
| Castlecomer                                   | -6.10                |

**Table 22: Uptake Levels in respect of Family-related State supports for Low-Income Households, 2016.**

| Type of Support                                       | No. in Kilkenny | as a Percentage of the County's Population Aged <18     | No. at National Level | as a Percentage of the State's population Aged <18     |
|---|-----------------|---|-----------------------|--|
| Back to school footwear & clothing allowance payments | 2739            | 10.6%   | 153,285               | 13%  |
| Family Income Supplement                              | 980             | 3.8%  | 55,913                | 5%   |
| One-Parent Family Payments                            | 507             | 2.0%  | 40,317                | 3%   |
|   |                 | <i>as a percentage of the County's Total Population</i> |                       | <i>as a Percentage of the State's Total Population</i> |
| GMS Medical Card Holders                              | 38,313          | 38.6%   | 1,734,853             | 36%  |

Research (e.g., EU Income Survey) shows that lone parent households are at a greater risk of poverty and social exclusion than are other types of families. In County Kilkenny, there are 18,616 families with children. Of these, 22.9% are headed by a lone parent; 19.4% by a lone mother, and 3.5% by a lone father. Highest rates are in Johnstown, Urlingford, Freshford, Castlecomer, Goresbridge,

Piltown and Ferrybank. Lone-parent families headed by mothers are also more prevalent in these areas, and in and around Kilkenny City.

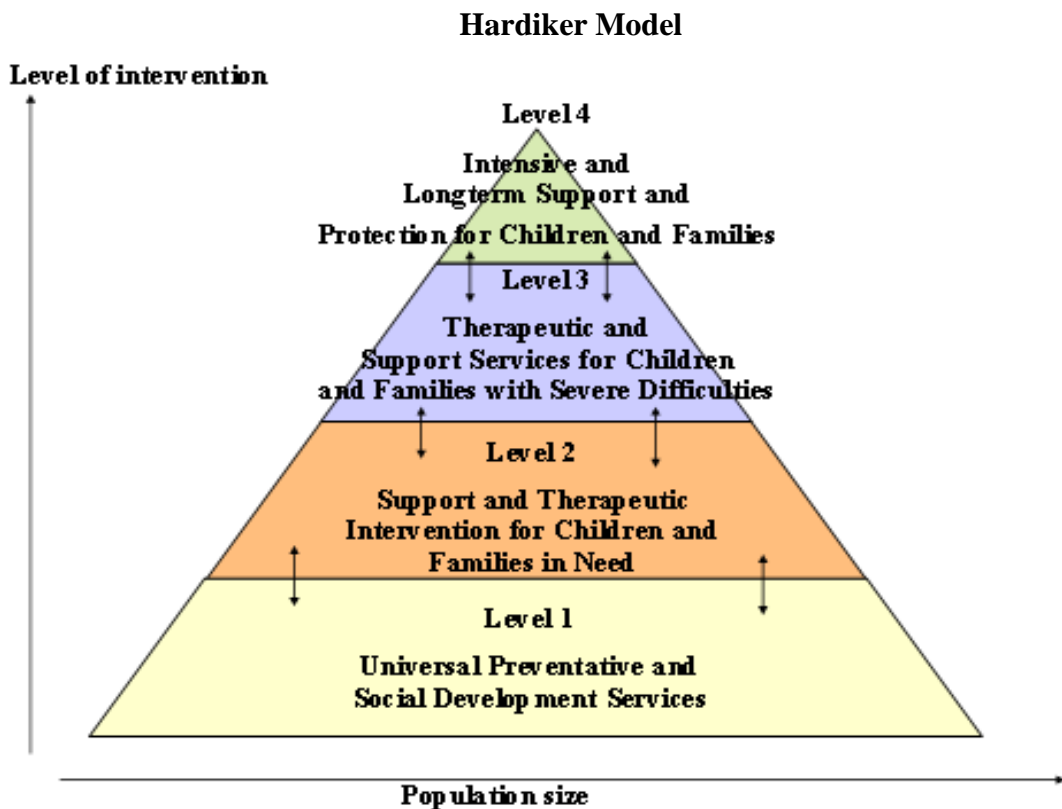
The following are some of the vital statistics in respect of families in County Kilkenny

|  |        |
|--|--------|
|  |        |
| Total couples with children                                      | 29,773 |
| Total one parent family (mother) with children                   | 5,813  |
| Total one parent family (father) with children                   | 977    |
| No. of Children in Families headed by a Lone Parent              | 6,790  |
| Total Number of Children:  | 36,563 |
| Children in Lone Parent Families as a Percentage of all children | 18.6%  |

Figures for receipt of the Pandemic Unemployment Payment for County Kilkenny in 2020 have been reported at 22%. This was a rise of 9.4% in December 2019 (National Youth Council of Ireland). This contrasts with a figure for overall unemployment for Q4 2019 in the South east of 6.9% (CSO)

## Section 3: Overview of Services to Children and Families in County Kilkenny

This section summarises the services provided for children, young people and families in County Kilkenny. The services are categorised under the headings: Health, Education and Training, Safe and Protected, Economic Security and Other Support Services. While services are listed under these categories most of them have a role under multiple outcomes. The table also presents the services using Hardiker Model (see diagram below) to reflect the level of intervention provided i.e. from Level 1 - a universal preventative and social development service to Level 4 intensive and long-term support and protection. This model is widely used in planning of services by government departments and health providers. They are further categorised under Statutory (S) or Voluntary (V). One of the 4 Local authority areas – Piltown – is part of the Waterford area for many service providers such as HSE, Tusla, Dept. of Social Protection, Solas etc and this brings particular challenges for the CYPSC in planning and delivering initiatives in the south of the county.





**Table 23: Services for Children, Young People and Families in Co. Kilkenny**

| <b>Health</b>  |   |                       |                                  |
|--|---|-----------------------|----------------------------------|
| <b>Service Area</b>  | <b>Service Response in Co. Kilkenny</b>   | <b>Hardiker Level</b> | <b>Voluntary/ Statutory(V/S)</b> |
| Health services (including maternal and infant health); public health (including school health); health promotion; dental, ophthalmic and other services | Public Health Nurses working from each Health Centre  | 1+                    | S                                |
|  | 23 Health Centres   | 1+                    | S                                |
|  | 8 Primary Health Care Teams + 1 for Ferrybank & South Kilkenny                              | 1+                    | S                                |
|  | GMS contracting General Practitioners   | 1+                    | S                                |
|  | Traveller Primary Healthcare Team   | 1                     | S                                |
|  | Kilkcreene Children's Services Centre   | 1- 4                  | S                                |
|  | HSE Child Psychology Primary Care Service   | 2+                    | S                                |
| Hospital services  | HSE Child and Adolescent Mental Health Service  | 2+                    | S                                |
|  | St. Luke's, Kilkenny provides general and emergency hospital services                       | 1+                    | S                                |
|  | Aut Even Private Hospital   | 1+                    | S                                |
|  | Lourdes Orthopaedic Hospital, Kilcreene   | 1+                    | S                                |
| Community-based therapy services, services for children and young people with disabilities, youth mental health services                                 | Waterford Regional Hospital provides orthopaedic services                                   | 1+                    | S                                |
|  | Enable Ireland Day Care Centre for children 0-18 yrs. with special needs                    | 2+                    | V                                |
|  | Camphill Communities  | 2+                    | V                                |
|  | The Drum Youth Café   | 1+                    | V                                |
| Addiction Services   | Ossory Youth  | 1+                    | V                                |
|  | Ardú Substance Misuse Team – Kilkenny City + in Health Centres throughout the county        | 1-3                   | S                                |
|  | Community Based Drugs initiative - Counsellors, Psychiatrist – based in St. Luke's Hospital | 1-4                   | S                                |
|  | Home visits – by arrangements   | 1+                    | S                                |
|  | South-East recovery College   | 1+                    | V                                |
|  | Residential Treatment Centre - 15-18 yr. olds   | 2+                    | S                                |
|  | Carlow/Kilkenny Development Worker  | 1+                    | V                                |
|  | Drugs Outreach Workers  | 1+                    | S                                |
|  | AA, Al-Anon, Narcotics Anonymous  | 1                     | V                                |
| Family Support Groups  | 1   | V                     |                                  |

| <b>Education and Training</b>  |  |                       |                                  |
|--|--|-----------------------|----------------------------------|
| <b>Service Area</b>  | <b>Service Response in Co. Kilkenny</b>                  | <b>Hardiker Level</b> | <b>Voluntary/ Statutory(V/S)</b> |
| Education services   | 85 Primary schools - 5 DEIS                              | 1                     | S                                |
|  | 16 Post primary - 5 DEIS                                 | 1                     | S                                |
|  | 4 Special schools  | 2+                    | S                                |
| Early Years services   | 2 County Childcare Committees                            | 1                     | V                                |
|  | Parent & Toddler groups                                  | 1                     | V                                |
|  | 94 Childcare centres                                     | 1                     | V                                |
|  | 1 Special preschool                                      | 2                     | V                                |
|  | 10 After School Services                                 | 1                     | V                                |
| Targeted educational services that support young people within universal provision – TESS, NEPS, School Completion, HSCL | School Completion Programmes                             | 2                     | S                                |
|  | Home School Community Liaison Officers (in DEIS schools) | 1+                    | S                                |
|  | NEPS psychologists for County Kilkenny                   | 1-2                   | S                                |
|  | Educational Welfare Officers                             | 1+                    | S                                |
|  | Courthouse Youth Café Castlecomer (Foroige)              | 1                     | V                                |
|  | Kilkenny Leader Partnership Development Worker           | 1+                    | V                                |
| Other specialist services for children and young people with additional needs  | Enable Ireland special preschool                         | 2                     | V                                |
|  | 9 ASD units  | 2                     | S                                |
| Other education and training   | Kilkenny Employment for Youth                            | 2                     | V                                |
|  | KCETB Youthreach   | 2                     | S                                |
|  | KCETB Post Leaving Cert. courses (PLC)                   | 1                     | S                                |
|  | KCETB Apprenticeships                                    | 1                     | S                                |
|  | KCETB Local Training initiatives (LTI)                   | 1                     | S                                |
|  | Music Generation Project                                 | 1                     | V                                |

| <b>Safe and Protected</b>             |   |                       |                                  |
|---------------------------------------|---|-----------------------|----------------------------------|
| <b>Service Area</b>                   | <b>Service Response in Co. Kilkenny</b>         | <b>Hardiker Level</b> | <b>Voluntary/ Statutory(V/S)</b> |
| Family Support Services               | 4 Family Resource Centres                       | 1-2                   | V                                |
|                                       | 2 PPFS Child and Family Networks                | 1-3                   | S                                |
|                                       | County Council Housing Social Worker            | 1                     | S                                |
| Child Welfare and Protection services | Tusla Child Protection services                 | 1                     | S                                |
|                                       | Tusla Foster Care and Adoption Services         | 1                     | S                                |
|                                       | Amber Women's Refuge domestic violence services | 1-3                   | V                                |
|                                       | KASA Rape Crisis Centre                         | 1-3                   | V                                |
| Youth Justice services                | Garda stations                                  | 1                     | S                                |
|                                       | Garda Juvenile Liaison Officer                  | 1-2                   | S                                |
|                                       | Garda Diversion Programme                       | 1-3                   | S + V                            |
|                                       | 1 Probation Officer (shared with Carlow)        | 2                     | S                                |

| <b>Economically Security</b>                                   |   |                       |                                  |
|--|---|-----------------------|----------------------------------|
| <b>Service Area</b>  | <b>Service Response in Co. Kilkenny</b>               | <b>Hardiker Level</b> | <b>Voluntary/ Statutory(V/S)</b> |
| Family Income Support Services Department of Social Protection | Social Welfare Offices                                | 1                     | S                                |
|  | MABS  | 1                     | S                                |
|  | Offices administering Supplementary Welfare Allowance | 1                     | S                                |
| Child Benefit  | Post Offices  | 1                     | S                                |
|  | Local Enterprise Office                               | 1                     | S                                |
|  | Kilkenny Leader Partnership Development Worker        | 1+                    | V                                |

| <b>Other Support Services</b>                                      |  |                       |                                  |
|--|--|-----------------------|----------------------------------|
| <b>Service Area</b>  | <b>Service Response in Co. Kilkenny</b>  | <b>Hardiker Level</b> | <b>Voluntary/ Statutory(V/S)</b> |
| Youth Services –<br>Ossory Youth,<br>Foróige,<br>WSTCYS(Ferrybank) | Youth Cafes  | 1+                    | V                                |
|  | Youth Projects in community  | 1+                    | V                                |
|  | Garda Youth Diversion Programme  | 2                     | S+V                              |
|  | Youth Clubs  | 1                     | V                                |
| Family & Community<br>Services                                     | Teen Parent Support Programme  | 2                     | V                                |
|  | Rainbows Support programmes  | 2                     | V+S                              |
| Local Authority<br>Provision                                       | Local Community Development<br>Committee (LCDC)  | 1                     | S+V                              |
|  | Homeless Services  | 1                     | S+V                              |
|  | 16 Playgrounds   | 1                     | S                                |
|  | Arts Office supports :<br>Youth Theatres,<br>Young Film Makers,<br>Siamsa Visual Arts Programme (5-12<br>yrs.),<br>Youth Poetry online,<br>Child and youth projects with local<br>museums, galleries and theatres,<br>Music Generation project | 1                     | V+S                              |
|  | Healthy Kilkenny   | 1                     | V+S                              |
|  | Libraries + mobile library service   | 1                     | S                                |
| Active Citizenship   | Comhairle na nÓg   | 1                     | V+S                              |
| Social Inclusion<br>measures                                       | Ring-a-Link rural bus  | 1                     | V                                |
|  | Traveller Health Projects  | 1 + 2                 | S+V                              |
|  | Girl Guide units   | 1                     | V                                |
|  | Scout troops   | 1                     | V                                |

## Section 4:

### Local Needs Analysis in County Kilkenny

In preparing this Children and Young People's Plan, the first for County Kilkenny, the CYPSC gathered information from many sources to inform the plan. The following priorities take account of the feedback received in the consultations with children, young people and agencies. These priorities also reflect the needs and issues identified in the Sociodemographic profile. This CYPP plan will address these priorities during the course of the 3yr plan:

**Table 24: Summary of the priorities and needs identified for CYPSC Action Plan 2021-2023**

| Healthy & Active                | Learning & Development                             | Safe & Protected   | Economic Security and Opportunity             | Connected, Respected and Contributing             |
|---------------------------------|--|--|---|---|
| Mental Health & Wellbeing       | Transitions between education levels               | Online and Social Media Safety                                   | Family Support                                | Active participation of children and young people |
| Healthy Lifestyles for Families | Wellbeing of children and young people in schools; | Children and young people experiencing domestic and sexual abuse | Children at risk of adverse circumstances     |   |
| Substance Misuse                | Children with additional needs                     | information on Child Safety                                      | Accessible services and facilities            |   |
| Sexual Health                   |  | Safe Public Spaces   | Resettlement and new communities              |   |
|                                 |  | Supporting Parents   | Aftercare for young people leaving state care |   |

## 4.1 Health

### Mental Health and Wellbeing

A key issue which was identified in consultations across all groups was mental health and wellbeing.

There was a strong sense that there was a shortage of therapeutic services for children and young people and that the waiting lists for treatment were very long. The consultations with young people detailed some of their experiences: "...a young person who was self-harming and suffering high levels of anxiety who, 2 years later was still waiting for an appointment". There was a perceptible level of frustration among professionals that this inadequate provision led to inappropriate referrals, which further added to waiting lists. There was a 21% increase in self-harm in 10-24 year olds between 2007 and 2017 (*NSRF*). In response to this CYPSC will work with the HSE Regional Suicide Resource Office to design and distribute a poster to referrers to clarify available services and what they provide.

Many stakeholders identified a rise in levels of anxiety, depression and social isolation in children and young people. There is an identified need for the increased provision of programmes to help children and young people to build resilience and social skills, which will promote good mental health which may alleviate the development of serious mental illness for some young people. While the Department and Education and Skills has built wellbeing into the school curriculum, there is a need to develop more programmes for outside of school settings such as youth & community groups.

Schools have also expressed concern about the levels of self-harm observed among children and young people and that, even at primary school level the numbers are increasing. The National Suicide Research Foundation reports 21% increase in self-harm in 10-24 year olds between 2007 and 2017. This highlights the need for schools to have access to appropriate supports for both pupils and teachers.

The National Office for Suicide Prevention has reported that Kilkenny deaths by suicide 2016/2018 are slightly above the national average – KK 9.4/100,000 vs. 8.1/100,000. The CYPSC will work with the Connecting for Life Implementation Committee to develop education in the areas of self-harm and suicide and a Critical Incident Protocol for responding to death by suicide.

### Healthy Lifestyles for Families

The consultations also highlighted the importance of physical activity and access to outdoor play, which was a particular interest expressed by children & young people. The "Playing our Part" documents the voices of children as young as 4 years who want to be out and about in nature and also young people who identified the need for 'hang-out' spaces where they felt safe and secure. CYPSC will support the Local Authority in ensuring that the voice of

children and young people is heard in the development of relevant plans, such as the upcoming County Play Plan

While Kilkenny is a county noted by many for its sporting successes, it was highlighted that the lack of physical activity is an issue for those not involved in sports. This is an issue currently under consideration by the Kilkenny Sports and Recreation Partnership (KRSP). CYPSC will work with KRSP to expand the opportunities for children and young people to be physically active through innovative actions, and by identifying and organising training for workers working with children and young people.

In response to the inequity in health outcomes highlighted for disadvantaged communities in the Kilkenny CYPSC Sociodemographic Profile (2018), CYPSC has developed the innovative “Healthy Streets/Community Programme”. This community-led health model has secured Healthy Ireland funding to develop innovative approaches to working in both urban and rural communities. The programme will form the basis of ongoing CYPSC approaches to improving family nutrition & activity levels over the course of the CYPP plan.

Kilkenny CYPSC will work with many agencies to plan specific cross community activities for families in various communities throughout the city and county.

The ‘Healthy Eating Made Easy’ programme run by HSE has provided training in the area of nutrition for trainers in community based services and CYPSC will work with HSE staff to expand the reach of the training to groups not currently availing of the programme.

The importance of appropriate weaning practice and support for parents was identified in ‘A Healthy Weight for Ireland: Obesity Policy and Action Plan 2016 – 2025’. CYPSC will support the HSE in the development & roll out of a community response to ensure that clinics and supports are available to all parents, including more targeted supports where required, across County Kilkenny.

## **Substance Misuse**

The Healthy & Active subgroup consulted with agencies on the issue of substance misuse. The substance misuse services in the county are well developed and operate throughout the county. The website Drugs.ie currently provides excellent information. However, young people told us that there is a need for more information on drugs both for themselves and also for their parents. CYPSC will explore the possibility of developing an app which would have comprehensive information for parents, young people and professionals on drugs and alcohol and the services available.

The issue of alcohol abuse is often regarded less seriously when compared with the dangers of drugs. However, professionals in the area have identified that alcohol abuse is causing

much more suffering in families and has deep impacts on children and young people. A HSE study conducted in 2014 by Trinity college found that “over half of parents who had children living with them were regular risky drinkers (Hope 2011)”, that “problem alcohol use can undermine the well-being of families (O Connor 2001)” and that “about six in ten people said they were negatively affected in some way by someone else’s drinking (AAI, 2011)”. In particular, the dangers of drinking and drug use in pregnancy, leading to the babies born with Neonatal Abstinence Syndrome is an issue which has been identified. CYPSC will work with HSE professionals to raise the awareness of this serious condition among professionals and the public.

## **Sexual Health**

The three key goals of the National Sexual Health Strategy for Ireland 2015–2020 strategy are:

- to ensure that everyone has access to appropriate sexual health education and information
- to ensure that high quality sexual health services are available and affordable
- to ensure that good quality data is available to guide the service

While various agencies are working to provide information on sexual health for children and young people there is no clear overview of what is being delivered in the county. The CYPSC will map the provision of information and support services around sexual health and wellbeing and develop a plan to expand the availability of information throughout the county. This will also link in to the regional Healthy Ireland actions being co-ordinated by the HSE and the LCDC Healthy Ireland Community Plan.

## **4.2 Education and Training**

### **Transitions between education levels**

Children and young people experience many transitions in their lives; from home to an early childhood setting, between early childhood settings, from there to primary school, transition from Junior to Senior Cycle in school and from school to employment/training/3<sup>rd</sup> level education. It is important that they make positive adjustments to the new school and classes so that their wellbeing is maintained and their learning is coherent and continuous.

McGee et al (2003) found that there was a strong correlation between the extent to which students experienced difficulty following transition and their likelihood of dropping out from education. Other research indicates that poor transitions impact on students’ wellbeing and on their achievement in the future (West et al, 2008). The CYPSC will engage with schools in urban and rural settings to address the issue of having a supportive system in place for children and young people. Current good practices from around the county will be used to inform this work and a path forward for schools will be piloted.



The situation for parents of children with additional educational needs was highlighted and, in particular, the need for these parents to have support when deciding on what schools would best meet the needs of their child. This will be addressed in collaboration with schools and parents to develop a resource that will be made available through the primary schools.

### **Literacy and Numeracy**

There are also concerns for a number of children who, though they have completed the primary school curriculum, do not have sufficient competence in literacy and/or numeracy to advance through post-primary level. This, as well as academic difficulties, often leads to an inability to cope and to emotional and behavioural issues for the young person and further lifelong impacts. KCETB, youth services and the FRCs have reported their concerns in this area.

“We know too that children who do not learn to read, write and communicate effectively are more likely to leave school early and in later life to be unemployed or in low skilled jobs, to have poorer emotional and physical health, to have limited earning power, and are more likely to be imprisoned.” (Dept. Education and Skills: 2011: Literacy and Numeracy for Learning and Life - The National Strategy to Improve Literacy and Numeracy among Children and Young People 2011-2020).

CYPSC will engage with KCETB, schools and parents to explore the development of further supports for children with literacy and numeracy difficulties.

### **Wellbeing of children and young people in schools**

The consultations with children and young people identified the issue of academic stress as a big concern for them. The number of young people on reduced timetables was also highlighted in the consultation with agencies. In response to these concerns CYPSC will explore the feasibility of having a designated safe, nurturing space in schools. Such a space would allow the young person to take some time out when they need it, when they are feeling overwhelmed or unable to cope.

### **Online and Social Media Safety**

The proliferation of social media and online information means that students have a wealth of information and resources at their fingertips. At the same time there, are risks associated with the online world which leaves many parents and teachers feel overwhelmed in the face of these risks. Young people told us in consultations that that they were quite knowledgeable in using the internet and were one step ahead when their parents tried to curb their access. Those consultations also identified that a high number of quite young children (under 10 years) had access to smart phones and had no sense of the need for safe internet use.

Consultations with agencies also identified the concerns of parents and professionals, and that parents often felt helpless in the face of the availability of internet especially on smart phones.

There are numerous resources to support parents and agencies to address the risks attached to internet use for children and young people and the Office for Internet Safety provides online information and co-ordinates Internet safety Day. CYPSC will use this opportunity to work with Comhairle an nÓg and the youth services to run events to raise awareness of the benefits, as well as the risks of social media and internet use throughout the county.

CYPSC has developed & delivered a series of workshops on internet safety for professionals and will continue to develop innovative models of supporting parents to address emerging internet safety issues.

Comhairle na nOg has committed to working with CYPSC on projects which address the issue of internet safety and especially the use of social media in online bullying.

### **Children with Additional Needs**

The need to support children and young people with disabilities to live richer lives was identified in the consultations. The area of self-advocacy for children and young people with disabilities is being developed by Social Ability Kilkenny/Carlow Group and CYPSC has undertaken to work with it to ensure that training is offered to young people, through support groups and special schools. CYPSC will also work with the KCETB to identify other support which can be delivered through youth work to this group of young people.

The CYPSC will also research the social outlets where children and young people have an opportunity to socialise and develop friendships which promote good mental health for all children. It will identify actions to support social opportunities for young people and also how current provision could be adapted to ensure greater accessibility for young people with special needs.

### **Children and young people experiencing Domestic Abuse**

There is a strong correlation between domestic abuse and child abuse. Children can be both direct and indirect victims of abuse. Research has shown children have a higher awareness of abuse than their parents acknowledge and often the perpetrator, victim or both parents underestimate the extent to which their child is aware of the abuse and, therefore, the impact the abuse is having on their child (*Barnardos 2016: What's the harm? A child centred response to domestic abuse*). Amber Women's Refuge provides accommodation, support and counselling to women and children experiencing domestic abuse in County Kilkenny. In 2019, refuge staff worked with 125 young people, providing refuge, support and play

therapy. A TLC Kidz programme for children who have past experience of domestic abuse has also been set up.

CYPSC will support the training of frontline workers in agencies working with children and families to recognise signs of domestic abuse and know how to respond. This will build the capacity of workers in a broad range of agencies to respond appropriately to signs of domestic and sexual abuse they encounter in their work.

## **Safer Public Spaces**

In the Playing our Part consultation young people between 12-16 years reported a lack of suitable spaces for their age group to meet and hang out. They are too old for the playground facilities and feel that they are treated with suspicion when they congregate with their friends. These young people have also expressed an interest in being outdoors while acknowledging that much of their leisure time is spent on screens. The CYPSC will engage with this age group of young people to explore how ‘hang-out ‘spaces might be sourced and developed, looking at national and international models of good practice.

## **Supporting Parents**

Parenting can influence children’s social, emotional and physical outcomes (Department of Children and Youth Affairs (DCYA), 2015). Supporting parents and improving parental capacity can contribute to family wellbeing.

Throughout the consultations with agencies and with the children and young people it is clear that parents often feel pressure in their parenting role. Children spoke of spending time with family as an important part of their lives, however some stated that parents often didn’t have enough time for this to happen. This was also identified through the Healthy Streets programme. It is acknowledged that different parenting support strategies are needed in supporting parents because family circumstances and family needs are different (Rochford et al., 2014). In County Kilkenny, various agencies offer individual and group support to parents but provision is not co-ordinated and it is not clear whether there are groups not currently being catered for. The CYPSC will undertake to carry out a mapping of the current provision and co-ordinate a calendar of programmes throughout the county.

The mapping exercise will also be used to identify gaps parenting supports and CYPSC will use this information to plan actions to address the gaps in provision.

## **Support for Children and Families in Adverse Economic Circumstances**

The Callan Workhouse Union consultation with children and young people highlighted significant levels of worry among children and young people about economic security and the security of having a home. It outlined the experience of homelessness for one young adult

and that of a young mother having to share a home with 3 generations of her family. The sociodemographic profile states that

“While the overall proportion of children and young people living in rented accommodation is below the regional average, there are several villages and urban neighbourhoods which have considerable concentrations of families, who are renting from the local authority or private landlords. These are among the neighbourhoods with the highest levels of deprivation and social exclusion in the county.”

Housing and economic security are also issues for families from New Communities and the Traveller Community as well as for young people leaving the care of the State. CYPSC will engage with these cohorts to identify specific issues and will also map what work services are currently being provided for them.

An interagency subgroup to progress addressing the needs of children and young people from the Travelling community has recently been established in response to the findings of the Kilkenny [CYPSC Sociodemographic Report](#) (2018) which identified that: “There has been a significant increase in the population of Irish Travellers in County Kilkenny, and an age-level analysis of this population reveals that over half are under twenty years of age”. As research has identified that Travellers continue to face prejudice in Irish society and have poor educational outcomes the CYPSC subgroup will use an interagency approach to develop an action plan to address the specific needs of children and young people in the Traveller community.

## **Active participation of children and young people**

In line with the *National Strategy on Children and Young People's Participation in Decision-Making*, Kilkenny CYPSC recognises the need for all children and young people in County Kilkenny, including the seldom heard, to have a voice in matters which affect their lives.

A key role of CYPSCs is to develop ways in which this voice is sought and listened to by all who work with, and provide services to, children and young people. True participation is attained through engagement in dialogue, in an interactive, on-going and inclusive process. Real dialogue and change require space, voice, audience and influence (Lundy Model). Kilkenny CYPSC will support all organisations/agencies to build capacity to engage in active consultation with children and young people and to integrate it into their way of working. It will engage with children and their parents to identify ways of hearing the voices of the seldom heard such as children with disabilities Traveller children and children from ethnic minorities.

Comhairle na nÓg is the local youth council, which gives children and young people the opportunity to be consulted in the development of services and policies in the county. CYPSC will continue to work in a collaborative way with Comhairle to further develop ways of ensuring that the voices of children and young people are represented in developments which affect their lives.

The inclusion of the voice of the 18-24 year old cohort in the Public Participation Networks (PPNs) has been identified and will be promoted through CYPSC member agencies and social media.

Volunteerism has long been identified as a way in which young people can actively contribute to their society and CYPSC will work with the local youth services to explore the opportunities for volunteerism for young people in the county. The Volunteer Centre for the area is located in Carlow and will be invited to share its knowledge and insights which can be used to build opportunities in County Kilkenny.

## **Change Management**

Kilkenny CYPSC has worked to strengthen interagency co-operation in the county and will continue to work with its member agencies to ensure that services are developed and delivered in a co-ordinated way, to improve outcomes for all of the children and young people.

The added challenge for the CYPSC is the landscape of service delivery in the county, where many of the services accessed by people living in the south of the county are delivered by agencies based in Waterford, such as Tusla, HSE services, etc. For this reason, CYPSC is committed to ensuring that there is representation from the south of the county on the CYPSC and its subgroups. This will be essential to the successful rolling out of CYPSC initiatives in the south of the county.

As the CYPSC has strong links with other counties it will explore opportunities for working on joint projects with CYPSCs in neighbouring counties to maximise the use of CYPSC resources.

CYPSC will make use of information technology to develop communication pathways with its members and with other agencies and provide access the data can inform the establishment and development of services.

CYPSC will also explore the benefits of developing the use of restorative approaches across all sectors to build strong, happy communities, by actively enabling good relationships and resolving conflict in a healthy manner. It will consult with its members and look at models of good practice both in Ireland and internationally.



## Section 5: Summary of Children and Young People's Plan for County Kilkenny

| Outcome Areas   | Local Priority Areas   |
|---|--|
| Active and Healthy, physical and mental wellbeing   | <ul style="list-style-type: none"> <li>• Mental Health &amp; Wellbeing;</li> <li>• Healthy Lifestyles for Families;</li> <li>• Substance Misuse;</li> <li>• Sexual Health</li> </ul>   |
| Achieving full potential in Learning and Development  | <ul style="list-style-type: none"> <li>• Transitions between education levels;</li> <li>• Wellbeing of children and young people in schools;</li> <li>• children with additional needs</li> </ul>  |
| Safe and Protected from Harm  | <ul style="list-style-type: none"> <li>• Online and Social Media Safety;</li> <li>• Children and young people experiencing domestic and sexual abuse;</li> <li>• Information on Child Safety;</li> <li>• Safe Public Spaces;</li> <li>• Supporting Parents</li> </ul>                                      |
| Economic Security and Opportunity   | <ul style="list-style-type: none"> <li>• Family Support;</li> <li>• Children at risk of adverse circumstances;</li> <li>• accessible services and facilities;</li> <li>• resettlement and new communities;</li> <li>• aftercare for young people leaving state care</li> </ul>                             |
| Connected, respected and contributing to their world  | <ul style="list-style-type: none"> <li>• Active participation of children and young people in planning of services which affect their lives</li> <li>• All agencies develop policy and systems to incorporate the voice of children and young people in their service development and delivery</li> </ul>  |
| Change Management   | Local Priority Areas   |
| Full County Representation<br>Information and Communication<br>Restorative Communities<br>Inter-county Co-operation | <ul style="list-style-type: none"> <li>• Representation from south of the county</li> <li>• Communication and Information pathways developed</li> <li>• Research and develop Restorative Practice Communities in the County</li> <li>• Work with neighbouring CYPSCs on possible joint projects</li> </ul> |

## Section 6:

### Action Plan for County Kilkenny Children and Young People's Services Committee

| Action Plan for County Kilkenny Children and Young People's Services Committee |   |  |   |   |                          |   |   |
|--|---|--|---|---|--------------------------|---|---|
| Outcome 1: Active and healthy, physical and mental wellbeing                   |   |  |   |   |                          |   |   |
| Priority Area  | Objective(s)  | Indicators   | Target  | Activities  | Timeframe for completion | Lead Responsibility   | Link to other plans   |
| Mental Health and Wellbeing  | Children and families have relevant information on services to support and address mental health issues | No of posters circulated<br>No of professionals receiving the poster               | 2,000 posters circulated<br>All GPs and Practice nurses | Develop CYPSC poster to provide information on referral pathways to mental health services for County<br><br>Collaborate with Mental Health Services and Library Services to develop a Bibliotherapy booklets | Q1 2021<br><br>Q2 2021   | Healthy & Active subgroup<br><br>Primary Care Child Psychology<br>Kilkenny County Library | Connecting for Life - Kilkenny<br><br>A Vision for Change 2006 – Mental Health Services<br><br>Kilkenny Local Economic and Community Plan |
|  | Infant Mental Health Strategy developed for the county  | Task group set up and meeting.<br><br>No. of training sessions<br>No. of attendees | Plan in place<br><br>1 per year<br>20 trained           | Set up a task group of relevant agencies to plan an Infant Mental Health Strategy<br><br>Provide training to frontline  | Q4 2021                  | Healthy & Active subgroup   | A Vision for Change 2006 – Mental Health Services   |

| <b>Action Plan for County Kilkenny Children and Young People's Services Committee</b> |  |   |   |   |  |   |  |
|---|--|---|---|---|--|---|--|
| <b>Outcome 1: Active and healthy, physical and mental wellbeing</b>                   |  |   |   |   |  |   |  |
| <b>Priority Area</b>  | <b>Objective(s)</b>  | <b>Indicators</b>                         | <b>Target</b>                                   | <b>Activities</b>   | <b>Timeframe for completion</b>                                    | <b>Lead Responsibility</b>  | <b>Link to other plans</b>                         |
|   |  |   |   | professionals   |  |   |  |
|   | Children and young people have skills and competencies to support resilience | Information report available              | 1 report  | Map the current availability and geographic spread of resilience programmes available in the county | <b>Q4 2021</b>   | Healthy & Active subgroup + partners: Kilkenny County Childcare Committee, KCETB, school representatives and youth services | A Vision for Change 2006 – Mental Health Services  |
|   | Increased capacity of frontline workers to deliver resilience programmes     | No. of young people engaged in programmes | 100 young people per year engaged in programmes | Co-ordinate a response to the need for resilience programmes based on the findings of mapping.      | <b>Q1 2022</b>   |   | Kilkenny LECP                                      |
|   |  | No. of programmes provided                |   |   | Convene practice seminar and specialist days for frontline workers |   | <b>Q3 2022</b>                                     |
|   |  | No. of frontline workers                  | 30 workers per year                             | <b>Q2 2021 – Q2 2023</b>  |  |   |  |
|   |  | No. of practice seminars                  | 1 practice seminar per year                     |   |  |   |  |
|   |  | No. of specialist days                    | 2 specialist days per year                      |   |  |   |  |
|   | To reduce suicide and self-harm among children and young people              |   |   | Promote the Connecting for Life Plan for member and partner agencies                                | <b>Ongoing</b>   | Connecting for Life Implementation group  | Connecting for Life - Kilkenny Kilkenny LECP group |



**Action Plan for County Kilkenny Children and Young People’s Services Committee**

**Outcome 1: Active and healthy, physical and mental wellbeing**

| Priority Area                   | Objective(s)   | Indicators   | Target                               | Activities  | Timeframe for completion | Lead Responsibility                          | Link to other plans  |
|---------------------------------|--|--|--------------------------------------|---|--------------------------|--|--|
|                                 | Agencies have the capacity to deal with impacts of suicide on the wider community              | Critical Incident/Emergency Event Protocol developed | 1 Protocol in place                  | Develop a Critical Incident/Emergency Event Protocol  | Q 1 2022                 |  | Kilkenny LCDC Healthy Ireland Community Plan                             |
| Healthy Lifestyles for Families | Increase awareness of the importance of healthy eating and nutrition for children and families | No. of areas   | Programmes run in 3 target areas x 2 | Develop and deliver Healthy Families programme to low-income families, young parents and new community families | Q2 2022                  | HSE Health & Wellbeing<br><br>HSE CHO Area 5 | A Healthy Weight for Ireland: Obesity Policy and Action Plan 2016 – 2025 |
|                                 |  | No. of programmes                                    |                                      | Explore the provision of Healthy Families type programme for areas in South County Kilkenny                     | Q1 2022                  |  | LCDC Healthy Ireland Community Plan                                      |
|                                 |  | No. of families participating                        | 1 task group                         | Set up task group of relevant stakeholders in place to identify target  | Q12022                   |  | National Physical Activity Plan for Ireland 2016                         |
|                                 |  | Task group established                               | Weaning Clinics                      | Develop a schedule of weaning clinics   |                          |  | Kilkenny LECF  |
|                                 |  | No. of weaning clinics<br>No.of trained facilitators |                                      |   |                          |  |  |

| Action Plan for County Kilkenny Children and Young People's Services Committee |   |  |  |  |                          |  |  |
|--|---|--|--|--|--------------------------|--|--|
| Outcome 1: Active and healthy, physical and mental wellbeing                   |   |  |  |  |                          |  |  |
| Priority Area  | Objective(s)  | Indicators   | Target   | Activities   | Timeframe for completion | Lead Responsibility  | Link to other plans  |
|  |   | No. of areas   | available in 3 target area   |  |                          |  | National Physical Activity Plan for Ireland 2016   |
|  | Increase capacity for frontline youth and community workers to provide healthy eating, nutrition and exercise programmes in the community | No. of programmes<br>No. of agencies attending<br>No. of trainers trained    | 1 training programme available per year<br>5 agencies p/a<br>10 trainers p/a           | Co-ordinate the provision of Healthy Food Made Easy and Healthy Physical Activity training for youth and community workers   | <b>Q4 2021 – Q4 2022</b> | Healthy & Active subgroup + partners: Youth services   | A Healthy Weight for Ireland: Obesity Policy and Action Plan 2016 – 2025   |
|  | Children and families have opportunities for Outdoor Play and Recreation  | Leaflet developed<br><br>No of leaflets provided<br>No. of services targeted | 1 design<br><br>200 leaflets per year<br>80 primary schools<br>15 post-primary schools | Collaborate with KSRP to develop information leaflets on forest walks, water – based and orienteering activities for families<br><br>Distribute leaflets through schools | <b>Q3 2022</b>           | Healthy & Active subgroup + partners: Kilkenny Sports and Recreation Partnership, Kilkenny County Council<br><br>Kilkenny Leader Partnership | Kilkenny LCDC Healthy Ireland Community Plan.<br><br>Local Authority Waters programme Office 'Working with Water & |

**Action Plan for County Kilkenny Children and Young People's Services Committee**

**Outcome 1: Active and healthy, physical and mental wellbeing**

| Priority Area    | Objective(s)   | Indicators   | Target  | Activities   | Timeframe for completion | Lead Responsibility   | Link to other plans  |
|------------------|--|--|---|--|--------------------------|---|--|
|                  |  | No. of events<br>No. of participants<br><br>No. of agencies                          | 3 events per year<br>100 participants<br><br>6 agencies   | Co-ordinate cross-community outdoors activities (e.g. nature walks, orienteering, biking, etc.)  |                          | Healthy & Active subgroup<br>FRCs. KRSP   | Biodiversity'<br><br>Kilkenny Sports and Recreation Partnership Strategy                                       |
|                  | Provide opportunities for physical activity for children and young people who do not participate in sports | No. of workshops provided<br>No of agencies attending<br><br>No of workers attending | 1 workshop per year<br>8 agencies attending<br><br>25 workers per year                                      | Provide workshops to frontline workers to develop extra skills to work with this target group  | <b>Q2 2022, Q2 2023</b>  | Healthy & Active subgroup+ partners: KRSP   | Kilkenny Leader Partnership  |
| Substance Misuse | Families and young people have information available on youth alcohol/drug misuse in the county            | Consultation carried out<br><br><br><br><br><br><br><br>App developed                | No of professionals consulted<br>No. of parents consulted<br>No. of young people consulted<br><br><br>1 app | Consult stakeholders on the need for an app to provide information to young people, parents and professionals on drugs and alcohol and support services available<br><br><br>Develop the app | <b>Q1 2022</b>           | Healthy & Active subgroup + partners: HSE Substance Misuse/Drugs.ie South East Regional Drugs Task Force (SERDTF) | National Drug Strategy- Reducing Harm, Supporting Recovery 2017-2025<br><br>Kilkenny LECP<br><br>Kilkenny LCDC |

**Action Plan for County Kilkenny Children and Young People's Services Committee**

**Outcome 1: Active and healthy, physical and mental wellbeing**

| Priority Area | Objective(s)  | Indicators   | Target   | Activities   | Timeframe for completion | Lead Responsibility                                | Link to other plans  |
|---------------|---|--|--|--|--------------------------|--|--|
|               | Professionals have a greater knowledge of the impacts of Neonatal Abstinence Syndrome                       | No. of workshops<br>No. of professions attending   | 1 workshop per year<br><br>15 professionals per year     | Organise the roll out a workshop to inform professionals on the dangers associated with Neonatal Abstinence Syndrome   | <b>Q2 2023</b>           | HSE and Wellbeing Department + CYPSC               | Healthy Ireland Community Plan                                       |
|               | All professionals working with families where there is substance or alcohol misuse are aware of Hidden Harm | No. of workshops provided<br><br>No. of agencies/attending<br><br>No. of professions attending | 1 workshop per year<br><br>20 professionals per workshop | Organise the delivery of information sessions on addiction, its effect on families and information on service provision  | <b>Q4 2022, Q1 2023</b>  | Tusla + HSE  | HSE Hidden Harm Project 2019   |
|               | Highlight deficits in alcohol and substance misuse services in the county                                   | Report available<br><br><br><br>Plan developed   | 1 report<br><br><br><br>1 Plan                           | Map services<br>Identify alcohol and substance misuse around the county<br><br>Publish report<br><br>Develop an action plan to address gaps in provision of services highlighted | <b>Q3 2022</b>           | CYPSC + HSE Substance Misuse Team + Youth Services | National Drug Strategy- Reducing Harm, Supporting Recovery 2017-2025 |

**Action Plan for County Kilkenny Children and Young People's Services Committee**

**Outcome 1: Active and healthy, physical and mental wellbeing**

| Priority Area | Objective(s)   | Indicators   | Target                    | Activities  | Timeframe for completion | Lead Responsibility  | Link to other plans                          |
|---------------|--|--|---------------------------|---|--------------------------|--|--|
| Sexual Health | Children and young people, including LGBTI, are supported in the area of sexual health<br><br>Young people have an increased awareness of positive sexual health and behaviour | No. of venues  | 3 venues                  | Map the provision of training in healthy relationships, consent and pornography       | <b>Q4 2022</b>           | Healthy & Active subgroup + partners: HSE/Health Promotion | National Sexual Health Strategy 2015 - 2020  |
|               |  | No. of workshops   | 3 workshops per year      |   | <b>Q1 2023</b>           |  | Kilkenny LECP                                |
|               |  | No. of children and young people taking part                             | 150 young people per year | Draw up an action plan to increase provision of training events based on the research | <b>Q2 2023-Q4 2023</b>   |  | Kilkenny LCDC Healthy Ireland Community Plan |
|               |  | Co-ordinate delivery of workshops in schools and other relevant services |                           |   |                          |  |  |

**Action Plan for County Kilkenny Children and Young People's Services Committee**

**Outcome 2: Achieving full potential in learning and development**

| Priority Area | Objective(s) | Indicators | Target | Activities | Timeframe for completion | Lead Responsibility | Link to other plans |
|---------------|--------------|------------|--------|------------|--------------------------|---------------------|---------------------|
|---------------|--------------|------------|--------|------------|--------------------------|---------------------|---------------------|

| <b>Action Plan for County Kilkenny Children and Young People's Services Committee</b> |   |   |  |   |  |                                     |  |
|---|---|---|--|---|--|-------------------------------------|--|
| <b>Outcome 2: Achieving full potential in learning and development</b>                |   |   |  |   |  |                                     |  |
| <b>Priority Area</b>  | <b>Objective(s)</b>   | <b>Indicators</b>   | <b>Target</b>  | <b>Activities</b>   | <b>Timeframe for completion</b>                            | <b>Lead Responsibility</b>          | <b>Link to other plans</b>   |
| Children and Young People in transition between Education Stages                      | To have supportive transitions between all levels of education  | No. of Workshops<br>No. of schools<br>No. of attendees<br><br>Programme developed | 2 workshops<br><br>6 primary schools<br><br>4 post-primary<br><br>1 prog.  | Organise a workshop for primary & post-primary schools<br>Develop a collaborative approach to implement a transition programme  | <b>Q2 2022, Q1 2023</b>                                    | CYPSC Education & Economic subgroup | First 5, strategy for babies, young children and their families<br><br>Kilkenny LECP |
|   | Parents of children with additional educational needs have information to help in identifying suitable post-primary schools | No. of Booklets developed<br><br>No. of Booklet distributed                       | Report completed<br><br>1,000 booklets printed<br>Booklet sent to all 5 <sup>th</sup> and 6 <sup>th</sup> class teachers | Map and identify the need for parents choosing post-primary school<br><br>Develop a book with appropriate questions to ask when assessing schools<br><br>Distribute the booklet to parents through 5 <sup>th</sup> and 6 <sup>th</sup> class teachers | <b>Q3 2022</b><br><br><b>Q2 2022</b><br><br><b>Q2 2022</b> | CYPSC Education & Economic subgroup | NCSE Statement of Strategy 2017-2021<br><br>Kilkenny LECP                            |

| <b>Action Plan for County Kilkenny Children and Young People’s Services Committee</b> |  |  |  |   |  |   |   |
|---|--|--|--|---|--|---|---|
| <b>Outcome 2: Achieving full potential in learning and development</b>                |  |  |  |   |  |   |   |
| <b>Priority Area</b>  | <b>Objective(s)</b>  | <b>Indicators</b>  | <b>Target</b>  | <b>Activities</b>   | <b>Timeframe for completion</b>              | <b>Lead Responsibility</b>  | <b>Link to other plans</b>                                      |
| Wellbeing of children and young people in schools                                     | Young people have a designated safe space on school campus for when they need it                   | No. of young people consulted<br>No. of teachers consulted<br>No. of parents<br><br>No of schools with designated safe space available | 50 young people<br>12 teachers<br><br>20 parents<br><br>3 x primary schools<br>3x post primary schools | Research the model for a Nurturing Space<br><br><br>Develop, pilot and evaluate a model based on outcomes of the research | <b>Q3 2022</b><br><br><br><br><b>Q4 2022</b> | CYPSC Education & Economic subgroup + children and young people + PPFS Steering Group | DES – national Wellbeing Curriculum                             |
| Children in Early Years settings  | All children have access to Early Years services   | No of consultations<br><br>No. of services consulted<br><br>No. of service users   | 2 per year<br><br>40 per year<br><br>200 per year  | Develop a feedback system with early years providers to identify barriers to access for children to early years services  | <b>Q1 2021 – Q4 2023</b>                     | CYPSC + County Childcare Committee  | First 5, strategy for babies, young children and their families |
|   | A support system for young people who have not achieved a basic knowledge in literacy and numeracy | No. of schools consulted<br>No. of teachers consulted<br><br>No of agencies  | 15 primary schools<br>10 post primary schools<br><br>5 agencies  | Research the supports available for young people leaving primary education without basic literacy and numeracy skills     | <b>Q2 2022</b>                               | Education & Economic subgroup + partners: Kilkenny Carlow ETB +                       | National Literacy   |

| <b>Action Plan for County Kilkenny Children and Young People’s Services Committee</b> |                                       |  |                      |   |                                 |   |   |
|---|---------------------------------------|--|----------------------|---|---------------------------------|---|---|
| <b>Outcome 2: Achieving full potential in learning and development</b>                |                                       |  |                      |   |                                 |   |   |
| <b>Priority Area</b>  | <b>Objective(s)</b>                   | <b>Indicators</b>                      | <b>Target</b>        | <b>Activities</b>   | <b>Timeframe for completion</b> | <b>Lead Responsibility</b>  | <b>Link to other plans</b>  |
| Literacy and Numeracy   |                                       | Model of support available             | 1 model              | Develop a model based on outcomes of the research.  | <b>Q3 2022</b>                  | IPPN + NAPD   | Strategy-<br><b>Literacy</b> and Numeracy for Learning and Life 2011-2020 |
|   |                                       | No. of schools running pilot programme | 1 Pilot<br>2 schools | Pilot the model in 2 post-primary schools   | <b>Q2 2022-<br/>Q3 2022</b>     | Education & Economic subgroup + partners:<br>Kilkenny Carlow ETB + IPPN + NAPD CYP SC |   |
|   |                                       | No. of children on pilot programme     | 1                    | Evaluate the model  | <b>Q4 2022</b>                  |   |   |
|   |                                       | Evaluation available                   | Evaluation           |   |                                 |   |   |
|   | Children develop oral language skills | No. of agencies                        | 6 agencies           | Set up inter-agency group of professionals to identify ways of supporting oral language development in the home | <b>Q2 2022</b>                  | Kilkenny Carlow ETB + HSE Speech therapy + County Childcare Committee                 |   |
|   |                                       | Leaflet developed                      | 1 leaflet            | Produce resources for parents to promote children’s oral language development                                   | <b>Q3 2022</b>                  |   |   |



| <b>Action Plan for County Kilkenny Children and Young People’s Services Committee</b> |  |  |                              |  |                                 |  |  |
|---|--|--|------------------------------|--|---------------------------------|--|--|
| <b>Outcome 2: Achieving full potential in learning and development</b>                |  |  |                              |  |                                 |  |  |
| <b>Priority Area</b>  | <b>Objective(s)</b>  | <b>Indicators</b>                            | <b>Target</b>                | <b>Activities</b>  | <b>Timeframe for completion</b> | <b>Lead Responsibility</b>                       | <b>Link to other plans</b>   |
|   |  | No. of leaflets                              | 300 leaflets                 | Distribute leaflet   | <b>Q1 2023</b>                  |  |  |
|   | Children and families have increased engagement with books and reading | Families using the library in targeted areas | 20 % increase in library use | Roll out with the Right To Read Action Plan to encourage library use in 3 targeted areas in county | <b>Q4 2022</b>                  | Kilkenny Library Service - Right To Read Network | <p>Kilkenny County Council ‘s Cultural strategy 2018-2022 – Library Service</p> <p>Kilkenny Library Service Right To Read Action Plan</p> <p>Our Public Libraries 2022 National Strategy</p> |

| <b>Action Plan for County Kilkenny Children and Young People's Services Committee</b> |   |                                   |                          |  |                                   |   |   |
|---|---|-----------------------------------|--------------------------|--|-----------------------------------|---|---|
| <b>Outcome 2: Achieving full potential in learning and development</b>                |   |                                   |                          |  |                                   |   |   |
| <b>Priority Area</b>  | <b>Objective(s)</b>   | <b>Indicators</b>                 | <b>Target</b>            | <b>Activities</b>  | <b>Timeframe for completion</b>   | <b>Lead Responsibility</b>  | <b>Link to other plans</b>  |
| Young people in post-primary education  | Young People and their parents have information on alternative education pathways   | No. of schools<br>No. of students | All post-primary schools | Liase with schools to ensure apprenticeship information sessions are provided for transition year pupils each year | <b>Q 2 2022</b><br><b>Q2 2023</b> | Education & Economic subgroup<br><br>Kilkenny Carlow ETB                  | Action Plan to expand Apprenticeship and Traineeship in Ireland 2016-2020 |
| New Communities   | Children and their families from the New Communities have access to language supports to enable them to participate in education, training and employment | Report available                  | 1 report                 | Map current provision of language supports, barriers to access, how information is shared                          | <b>Q2 2022</b>                    | Education & Economic subgroup<br>+ partners:<br>KCETB, KLP, FRCs, Schools | Kilkenny Refugee Resettlement Programme                                   |
|   |   | Action Plan available             | 1 Action Plan            | Develop an action plan to address barriers identified in research  | <b>Q3 2022</b>                    |   |   |
|   |   | No. agencies engaged              | 10 agencies              | Develop methods of sharing the information on current good practice and service provision                          | <b>Q2 2022</b>                    | Education & Economic subgroup<br>+ partners:<br>KCETB, KLP, FRCs, Schools |   |

| <b>Action Plan for County Kilkenny Children and Young People's Services Committee</b> |  |   |  |   |                                 |  |  |
|---|--|---|--|---|---------------------------------|--|--|
| <b>Outcome 3: Safe and protected from harm</b>  |  |   |  |   |                                 |  |  |
| <b>Priority Area</b>  | <b>Objective(s)</b>  | <b>Indicators</b>   | <b>Target</b>  | <b>Activities</b>   | <b>Timeframe for completion</b> | <b>Lead Responsibility</b>   | <b>Link to other plans</b>   |
| Promoting safer use of internet and social media                                      | Parents informed about online and social media safety                                  | No. of information sessions<br>No. of parents<br>No. of areas | 1 session p/a<br><br>30 parents p/a<br>3 areas of county | Roll out Information/education sessions for parents and professionals   | <b>Q 2 2022</b>                 | PPFS Steering Group/Outcome 3 subgroup + Partners: Youth Services, Schools | Dept. Education Junior Cert. Wellbeing Curriculum<br><br>National anti-bullying plan |
|   | Children and young people using internet and social media in a safe and productive way | No. of Events<br><br>No. of participants                      | 2 events p/a<br><br>50 p/a                               | Co-ordinate Internet Safety Day to disseminate information on safe use of social media and internet             | <b>Q1 2021<br/>Q1 2022</b>      |  |  |
|   |  | Information app developed                                     | 1 app  | Collaborate with youth services and Comhairle na n-Óg to provide information on internet safety to young people |                                 | PPFS Steering Group/Outcome 3 subgroup + partners: Comhairle na nÓg        | Dept. Education Junior Cert. Wellbeing Curriculum<br><br>National anti-bullying plan |

## Action Plan for County Kilkenny Children and Young People's Services Committee

### Outcome 3: Safe and protected from harm

| Priority Area   | Objective(s)  | Indicators  | Target                                       | Activities  | Timeframe for completion | Lead Responsibility   | Link to other plans  |
|---|---|---|--|---|--------------------------|---|--|
| Promoting safer use of internet and social media      | Frontline workers have increased capacity to provide information and support to clients on online safety      | No. of Training sessions for frontline workers provided<br><br>No. of workers trained | 1 session per year<br><br>25 workers trained | Co-ordinate training sessions for frontline workers   |                          | PPFS Steering Group/Outcome 3 subgroup + partners: Youth Services | Dept. Education Junior Cert. Wellbeing Curriculum<br><br>National anti-bullying plan<br><br>DEIS |
| Children and young people experiencing Domestic Abuse | Children and young people who experience abuse have information on Domestic Abuse and supports available      | No. of events<br>No. of areas<br>No. of attendees                                     | 1 event per year<br>4 towns<br>50 attendees  | Collaborate with relevant agencies to provide awareness-raising campaigns throughout the county     | <b>Q4 2022</b>           | PPFS Steering Group/Outcome 3 subgroup                            | Second National Strategy on Domestic, Sexual and Gender-based Violence 2016 – 2021               |
|   | Frontline workers have capacity to identify and support children and young people experiencing domestic abuse | No. of training sessions<br>No. of workers trained                                    | 1 session per year<br>15 workers trained     | Co-ordinate awareness raising training to frontline workers in collaboration with relevant agencies | <b>Q3 2022</b>           | PPFS Steering Group/Outcome 3 subgroup                            |  |

| Action Plan for County Kilkenny Children and Young People's Services Committee |   |   |   |  |                                       |  |   |
|--|---|---|---|--|---------------------------------------|--|---|
| Outcome 3: Safe and protected from harm  |   |   |   |  |                                       |  |   |
| Priority Area  | Objective(s)  | Indicators  | Target  | Activities   | Timeframe for completion              | Lead Responsibility  | Link to other plans   |
|  |   | No. of training sessions<br>No. of workers trained                            | 1 session per year<br>15 works trained              | Co-ordinate delivery of Non-violent Resistance training  | <b>Q2 2022</b>                        | PPFS Steering Group/Outcome 3 subgroup   |   |
| Adverse Childhood Experiences  | Frontline professionals have capacity support to children and families who have Adverse Childhood Experiences | No training sessions<br>No of professionals                                   | 1 training per year<br><br>20 professional          | Organise roll out of ACE straining to professionals  | <b>Q 4 2022</b>                       | Task group<br>PPFS Steering Group/Outcome 3 subgroup   | Tusla Prevention, Partnership and Family Support (PPFS) Programme                         |
| Safety in Public Spaces  | Children and families are safe when using public spaces throughout the city and county                        | No. of consultations<br>No. of parents consulted<br>No. of children consulted | 6 consultation<br>20 parents<br><br>30 children     | Map the current availability of public spaces<br><br>Develop a plan based on the outcomes of the mapping | <b>Q 3 2022</b><br><br><b>Q1 2023</b> | Task group<br>PPFS Steering Group/Outcome 3 subgroup + partners:<br>Kilkenny Co. Co., youth services, KCCC | Kilkenny LCDC<br>Healthy Ireland<br>Community Plan  |
| Supporting parents   | Parents are supported in their parenting role   | No. calendars<br><br>No. agencies supplied                                    | 1 calendar (online) per quarter<br><br>150 agencies | Compile and distribute a calendar of parenting programmes and supports.                                  | <b>Q3 2021</b>                        | PPFS Steering Group/Outcome  | Tusla Prevention, Partnership and Family Support (PPFS) Programme<br><br>First 5 Strategy |

| Action Plan for County Kilkenny Children and Young People's Services Committee |   |  |                                |  |                          |  |   |
|--|---|--|--------------------------------|--|--------------------------|--|---|
| Outcome 3: Safe and protected from harm  |   |  |                                |  |                          |  |   |
| Priority Area  | Objective(s)  | Indicators   | Target                         | Activities   | Timeframe for completion | Lead Responsibility                    | Link to other plans   |
|  |   | Report available   | 1 report                       | Map the provision of supports to parents<br>Use mapping results to identify gaps in provision of support to parents                                | Q4 2021                  | 3 subgroup                             |   |
|  |   | Action Plan developed                                      | 1 plan                         | Draw up an action plan to address the gaps identified  | Q1 2022                  | PPFS Steering Group/Outcome 3 subgroup |   |
| Supporting Carers  | Young Carers are supported in their caring role         | No. of young people consulted<br>No. of agencies consulted | 50 young people<br>10 agencies | Research the number of young people in caring roles in the county<br>Identify the needs of young carers and develop an Action Plan to address them | Q1 2021<br>Q2 2022       | Ossory Youth                           | Department of Health (2012) National Carers' Strategy                             |
| Children First   | All agencies fully trained in Children First guidelines | No. of training sessions<br>No of people trained           | 2 per year<br>12 per session   | Identify gaps in Children First training provision<br>Organise roll out of Children First training to agencies in targeted areas                   | Ongoing                  | Tusla                                  | Children First: National Guidance for the Protection and Welfare of Children 2017 |

| <b>Action Plan for County Kilkenny Children and Young People's Services Committee</b> |  |  |  |   |                                 |   |  |
|---|--|--|--|---|---------------------------------|---|--|
| <b>Outcome 4: Economic security and opportunity</b>                                   |  |  |  |   |                                 |   |  |
| <b>Priority Area</b>  | <b>Objective(s)</b>  | <b>Indicators</b>                              | <b>Target</b>  | <b>Activities</b>   | <b>Timeframe for completion</b> | <b>Lead Responsibility</b>  | <b>Link to other plans</b>   |
| Families in economic disadvantage   | Support for families living in disadvantaged and marginal areas  | Report completed<br><br>Action Plan            | Report completed<br><br>1 plan                         | Map areas of high level of social deprivation and disadvantage<br><br>Develop an action plan based on the findings of research  | <b>Q2 2023</b>                  | Task group Education & Economic subgroup<br><br>KK County Council + KLP | Kilkenny County Development Plan 2014-2020   |
| Children at risk of adverse economic circumstances                                    | Children whose families do not have secure housing are supported | 1 Report<br>No of workshop<br>No. of attendees | Report completed<br><br>1 workshop<br><br>20 attendees | Research the extent of child homelessness in the county<br><br>Convene workshop on the needs of homeless children<br><br>Develop an action plan to address the needs identified in research | <b>Q 1 2022</b>                 | Task group Education & Economic subgroup                                | Kilkenny County Development Plan 2014-2020<br><br>Homeless Strategy - National Implementation Plan |

| <b>Action Plan for County Kilkenny Children and Young People's Services Committee</b> |  |   |                            |   |                                 |  |  |
|---|--|---|----------------------------|---|---------------------------------|--|--|
| <b>Outcome 4: Economic security and opportunity</b>                                   |  |   |                            |   |                                 |  |  |
| <b>Priority Area</b>  | <b>Objective(s)</b>  | <b>Indicators</b>                                     | <b>Target</b>              | <b>Activities</b>   | <b>Timeframe for completion</b> | <b>Lead Responsibility</b>   | <b>Link to other plans</b>                 |
| Children and Young People from the Travelling Community                               | Children and Young People from the Travelling Community are supported                    | No of agencies engaged                                | 15 agencies                | Set up a subgroup to research the needs of children and young people in relation to targeted education and training | <b>Q1 2022</b>                  | CYPSC + partners:<br>Kilkenny County Council, HSE Social Inclusion, KCETB, KLP | Kilkenny LECP<br><br>KCETB Youth Work Plan |
|   |  | Plan developed  | 1 plan                     | Support the development of an action plan based on outcomes of the research   | <b>Q3 2022</b>                  |  |  |
| Accessibility to Services/Facilities  | Families throughout the county have greater accessibility to services                    | Report available                                      | 1 report                   | Research levels of digital connectivity throughout the county   |                                 | Task group Education & Economic subgroup                                       | Kilkenny County Development Plan 2014-2020 |
| Resettlement and New Communities  | New Community families are supported to integrate and participate in the local community | No of consultations                                   | 4 consultations            | Research the needs of young people from new communities   | <b>Q3 2022</b>                  | Task group Education & Economic subgroup                                       | Kilkenny Re-settlement Plan                |
|   |  | No of families consulted<br>No. of agencies consulted | 20 families<br>10 agencies | Prepare an action plan to address the needs identified in the research  | <b>Q4 2022</b>                  |  |  |



| <b>Action Plan for County Kilkenny Children and Young People's Services Committee</b> |   |                                     |                          |   |                                 |   |   |
|---|---|-------------------------------------|--------------------------|---|---------------------------------|---|---|
| <b>Outcome 4: Economic security and opportunity</b>                                   |   |                                     |                          |   |                                 |   |   |
| <b>Priority Area</b>  | <b>Objective(s)</b>   | <b>Indicators</b>                   | <b>Target</b>            | <b>Activities</b>   | <b>Timeframe for completion</b> | <b>Lead Responsibility</b>                      | <b>Link to other plans</b>  |
| Aftercare for young people leaving State Care   | Young people leaving state care are supported to develop their full potential | Reports to CYPSC<br><br>Action Plan | 4 per year<br><br>1 plan | Collaborate with Tusla Aftercare Committee to identify needs of young people leaving state care<br><br>Produce a plan to address the identified needs | <b>Q3 2022</b>                  | CYPSC + Tusla + Kilkenny Leadership Partnership | Tusla National Aftercare Policy for Alternative Care<br><br>Kilkenny LECP |

| <b>Action Plan for County Kilkenny Children and Young People's Services Committee</b> |   |  |  |  |                                 |  |   |
|---|---|--|--|--|---------------------------------|--|---|
| <b>Outcome 5: Connected, respected and contributing to their world</b>                |   |  |  |  |                                 |  |   |
| <b>Priority Area</b>  | <b>Objective(s)</b>   | <b>Indicators</b>  | <b>Target</b>  | <b>Activities</b>  | <b>Timeframe for completion</b> | <b>Lead Responsibility</b>   | <b>Link to other plans</b>  |
| Active participation of children and young people                                     | Agencies are actively including the voice of children and young people when planning services | Guidelines developed   | 1 booklet  | Develop and share guidelines to implement the National Framework for Participation of Children and Young People in Decision making for agencies who provide services for children and young people | <b>Q1 2022</b>                  | PPFS Steering Group<br>DCYA  | Framework for Participation of Children and Young People in Decision making |
|   |   | No of workshops<br>No of attendees   | 1 workshop per year<br><br>20 attendees per year             | Convene workshops with agencies to work on implementing the Framework  | <b>Q4 2022</b>                  |  |   |
|   | Children and young people have a voice in development of County Play Plan                     | No. of areas<br><br>No. of consultations<br><br>No. of children and young people consulted | 5 areas<br>10 consultations<br>120 children and young people | Organise consultation with children and young people in development of County Play Plan<br><br>CYPSC participate   | <b>Q4 2022</b>                  | CYPSC + partners:<br>Kilkenny County Council,<br>Youth Services,<br>County Childcare Committee | Kilkenny County Council Play Plan   |

## Action Plan for County Kilkenny Children and Young People's Services Committee

### Outcome 5: Connected, respected and contributing to their world

| Priority Area | Objective(s)   | Indicators   | Target     | Activities   | Timeframe for completion | Lead Responsibility                         | Link to other plans   |
|---------------|--|--|------------|--|--------------------------|---|---|
|               |  | CYPSC representative on Play Plan Development Group            | 1 rep.     | in developing and monitoring the Play Plan   | <b>Q4 2022</b>           |   |   |
|               | Children and young people are actively involved in the planning of services which are aimed at supporting them | No. of CYPSC meetings attended by Comhairle members            | 2 per year | Comhairle na nÓg present their work to CYPSC   | <b>Ongoing</b>           | PPFS Steering Group/Outcome 3 subgroup DCYA | National Strategy on Children and Young People's Participation in Decision-Making |
|               |  | No. Comhairle Advisory meetings attended by CYPSC Co-ordinator | 6 per year | Comhairle informed of agenda for upcoming CYPSC meetings and invited to submit input or attend, when of interest |                          | CYPSC                                       |   |
|               |  | No. of actions   | 2          | Develop collaborative actions when Comhairle   | <b>Q4 2022</b>           | CYPSC                                       |   |

| <b>Action Plan for County Kilkenny Children and Young People's Services Committee</b> |   |                               |                           |  |                                 |                            |  |
|---|---|-------------------------------|---------------------------|--|---------------------------------|----------------------------|--|
| <b>Outcome 5: Connected, respected and contributing to their world</b>                |   |                               |                           |  |                                 |                            |  |
| <b>Priority Area</b>  | <b>Objective(s)</b>   | <b>Indicators</b>             | <b>Target</b>             | <b>Activities</b>  | <b>Timeframe for completion</b> | <b>Lead Responsibility</b> | <b>Link to other plans</b>   |
|   |   |                               |                           | identifies specific issues   |                                 |                            |  |
|   | Young adults 18-24 have a voice in developments affecting their lives | No. of 18-24 year olds on PPN | Recruit 5 18-24 year olds | Promote participation of young adults on the PPN<br>Attend events for target age group to promote the PPN to 18-24 year old<br><br>Promote PPN work through social and local media | <b>Q4 2022</b>                  | PPN Co-ordinator + CYPSC   | DCYA National Strategy on Children and Young People's Participation in Decision-Making<br><br>National Youth Strategy 2015 |

| <b>Action Plan for County Kilkenny Children and Young People's Services Committee</b>     |   |  |                        |  |                                  |   |  |
|---|---|--|------------------------|--|----------------------------------|---|--|
| <b>Outcome 5: Connected, respected and contributing to their world</b>                    |   |  |                        |  |                                  |   |  |
| <b>Priority Area</b>  | <b>Objective(s)</b>   | <b>Indicators</b>                        | <b>Target</b>          | <b>Activities</b>  | <b>Timeframe for completion</b>  | <b>Lead Responsibility</b>  | <b>Link to other plans</b>               |
| Seldom-heard children and young people a voice in decisions affecting their lives         | Children and young people with special needs develop self-advocacy skills | No. of workshops delivered               | 2 per year             | Collaborate with the Social Ability Kilkenny/Carlow Steering Group to deliver workshops on self-advocacy for people with special needs to schools and youth workers<br><br>Social Ability Kilkenny/Carlow Steering Group invited to participate in work of subgroups | <b>Q2 2022</b><br><b>Ongoing</b> | Social Ability Kilkenny/Carlow Steering Group                           | A Vision for Change<br><br>Kilkenny LECP |
|   |   | No of schools and agencies participating | 6 schools + 3 agencies |  |                                  |   |  |
| No. of participants   | 15 per workshop<br>2 per year   |  |                        |  |                                  |   |  |
| No. of reps on subgroups  | 1 rep per subgroup  |  |                        |  |                                  |   |  |
| Children and young people with additional needs have opportunities to develop friendships |   | Report available                         | 1 report               | Map social events that can be accessed by children and young people with special needs   | <b>Q3 2022</b>                   | CYPSC + +<br>HSE Disability Services + youth services + special schools | A Vision for Change<br>Kilkenny LECP     |
|   |   | Report available                         | 1 report               | Research models of good practice nationally and internationally  | <b>Q4 2022</b>                   |   |  |
|   |   | No of agencies                           | 10 agencies            |  |                                  |   |  |

| <b>Action Plan for County Kilkenny Children and Young People's Services Committee</b> |   |   |  |  |                                 |  |   |
|---|---|---|--|--|---------------------------------|--|---|
| <b>Outcome 5: Connected, respected and contributing to their world</b>                |   |   |  |  |                                 |  |   |
| <b>Priority Area</b>  | <b>Objective(s)</b>   | <b>Indicators</b>   | <b>Target</b>                                | <b>Activities</b>  | <b>Timeframe for completion</b> | <b>Lead Responsibility</b>                               | <b>Link to other plans</b>  |
|   |   |   |  | Share information with agencies providing services to children and young people  | <b>Q1 2023</b>                  |  |   |
| Youth Work and inclusivity  | All young people feel included, accepted and protected in society | No. of agencies on subgroup<br><br>Action Plan                                  | 4 agencies<br><br>1 plan                     | Set up a subgroup to identify particular target groups who may need extra youth work provision esp. young people with disabilities and young Travellers<br><br>Develop a plan to meet the needs identified | <b>Q3 2022</b>                  | CYPSC + Traveller Needs subgroup<br>KCETB Youth Services | KCETB Youth Work Plan   |
| Volunteerism for Young People   | Young people have opportunities to volunteer in their communities | No. of agencies consulted<br>No of young people consulted<br><br>Plan developed | 10 agencies<br>80 young people<br><br>1 plan | Research current opportunities for young people to volunteer<br>Develop an action plan to highlight opportunities for  | <b>Q3 2023</b>                  | CYPSC + partners: youth services                         | National Strategy on Children and Young People's Participation in Decision-Making |

| <b>Action Plan for County Kilkenny Children and Young People's Services Committee</b> |   |  |                                     |  |                                 |   |  |
|---|---|--|-------------------------------------|--|---------------------------------|---|--|
| <b>Outcome 5: Connected, respected and contributing to their world</b>                |   |  |                                     |  |                                 |   |  |
| <b>Priority Area</b>  | <b>Objective(s)</b>   | <b>Indicators</b>  | <b>Target</b>                       | <b>Activities</b>  | <b>Timeframe for completion</b> | <b>Lead Responsibility</b>                      | <b>Link to other plans</b>   |
|   |   |  |                                     | volunteerism   |                                 |   |  |
| Children, Young people and the Arts   | Children and young people can participate in creative and cultural activities and to engage with nature | No. of events<br>No. areas<br>No of children and young people attended | 4 events<br>3 areas<br>60 attendees | Collaborate with County Council to organise music events in targeted areas under the Cultural Strategy | <b>Q4 2022</b>                  | Kilkenny County Council<br><br>Music Generation | Cultural Strategy for Arts, Heritage and Libraries 2018-2022<br>Creative Ireland |

| <b>Action Plan for County Kilkenny Children and Young People's Services Committee</b> |  |  |  |  |                                 |                            |                            |
|---|--|--|--|--|---------------------------------|----------------------------|----------------------------|
| <b>Change management</b>  |  |  |  |  |                                 |                            |                            |
| <b>Priority Area</b>  | <b>Objective(s)</b>  | <b>Indicators</b>  | <b>Target</b>                                    | <b>Activities</b>  | <b>Timeframe for completion</b> | <b>Lead Responsibility</b> | <b>Link to other plans</b> |
| Full County Representation on CYPSC   | Ensure that South County Kilkenny is actively represented in the work of the CYPSC | No of representative for South Kilkenny on CYPSC<br><br>No. of representatives on the CYPSC and subgroups from South County Kilkenny | 2 reps.<br><br>3 reps.                           | Seek CYPSC representatives for the South of the county on the main CYPSC Committee<br><br>Seek representation for the South of the county on the subgroups | <b>Ongoing</b>                  | CYPSC                      |                            |
| Restorative Communities   | To promote Restorative Practice throughout the county                              | Subgroup set up<br><br>No. of RP training workshops<br>No. of agencies involved<br>No. of participants on RP training                | 2 workshops<br><br>15 agencies<br><br>30 trained | Set up subgroup to develop Restorative Practice in county<br><br>Provide training in RP  | <b>Q3 2022</b>                  | CYPSC                      |                            |
| Information and Communication   | CYPSC gathers and shares information throughout the                                | Website set up<br><br>No. of newsletters   | 1 website<br><br>Weekly                          | Set up website and social media platform   | <b>Q4 2022</b>                  | CYPSC                      |                            |



| <b>Action Plan for County Kilkenny Children and Young People's Services Committee</b> |   |                          |                                |   |                                 |                            |                            |
|---|---|--------------------------|--------------------------------|---|---------------------------------|----------------------------|----------------------------|
| <b>Change management</b>  |   |                          |                                |   |                                 |                            |                            |
| <b>Priority Area</b>  | <b>Objective(s)</b>                                     | <b>Indicators</b>        | <b>Target</b>                  | <b>Activities</b>   | <b>Timeframe for completion</b> | <b>Lead Responsibility</b> | <b>Link to other plans</b> |
|   | county  | Admin support            | newsletter<br>3 hours per week | Advocate for sufficient funding to ensure the continuance of the regular CYPSC newsletter sharing information on relevant events and training | Ongoing                         |                            |                            |
| Inter-county Co-operation   | Co-operation and collaboration with neighbouring CYPSCs | No. of joint initiatives | 2 per year                     | Explore opportunities to engage in joint working with neighbouring CYPSCs   | <b>Q4 2022</b>                  | CYPSC                      |                            |

## Section 7: Monitoring and Review

County Kilkenny CYPSC is committed to ongoing review and monitoring of the implementation of this Plan. The subgroup structures will be responsible for carrying out the activity and actions assigned to them. The subgroup Chairs will regularly report on the activities of each subgroup.

The monitoring and review will be carried out at various stages throughout the life of the CYPP:

- **Annual Programme of Work:** An Annual Programme of Work will be prepared at the start of each calendar year. This will provide a statement of the high-level goals and actions planned for the coming year using the national CYPSC Template for the CYPSC Annual Programme of Work 2021. This will also be submitted to the National CYPSC Co-ordinator.
- **Mid-year Progress Update:** The national Template for Mid-Year Progress Update will be used to monitor the progress of the Annual Programme of work and to highlight issues and developments arising through the work.
- **CYPSC Annual Progress Report:** The national CYPSC Annual Progress Report Template will be used to report on the work for the year, whether the actions were carried out and any barriers encountered. It will also highlight any developments locally or nationally during the year and any changes to the CYPP which may be necessary as a result. The report will give an update on interagency working and work of subgroups and participation of children and young people throughout the year and will also be submitted to the National CYPSC office.

## **Section 8:**

### **Appendices**

Appendix 1: Summary of Indicators for Children and Young People in Co. Kilkenny

Appendix 2: Terms of Reference for Kilkenny CYPSC

Appendix 3: Membership of the CYPSC subgroups

Appendix 4: Bibliography

Appendix 5: Sociodemographic Statement – Executive Summary

Appendix 6: Consultation with Children and Young People – Summary

Appendix 7: Acronyms used in this Plan

## Appendix 1:

## Summary of Indicators for Children and Young People in Co. Kilkenny

| <i>Indicator</i>   | <i>Kilkenny</i>                    | <i>% in Kilkenny</i>             | <i>State</i>          |
|--|------------------------------------|----------------------------------|-----------------------|
| Total Population   | 99,232                             |                                  |                       |
| Child population<br>0-17 years   | 25,944                             | 26.14%                           | 25.0%                 |
| 0-24years  | 32,977                             | 33.23%                           |                       |
| Infant mortality<br>(per 1,000 live births)  | 3 (2018)                           | 2.7 (2018)                       | 2.9 (2021)            |
| Total Households: 34,855<br><br>Children 0-15 in One-Parent families   | 6,790 families;                    | 18.6% of all children            | 16.5% of all children |
| The percentage of children 0-17 whose mother has attained:<br>(a) primary,<br>(b) lower secondary,<br>(c) upper secondary<br>Or<br>(d) third-level education | (a) 758                            | (a) 3.5%                         | (a) 8.1%              |
|  | (b) 2,841                          | (b) 13.0%                        | (b) 13.3%             |
|  | (c) 9,411                          | (c) 43.0%                        | (c) 37.3%             |
|  | (d) 8,461                          | (d) 38.7%                        | (d) 38.3%             |
| Traveller children   | 0-19 years: 296<br>0-24 years: 356 | 11.2 per 1,000<br>11.0 per 1,000 | 11.9 per 1,000        |
| Children of non-Irish ethnicity<br>0-24 years  | 2,371                              | 9.13%                            | 6.6% (0-17 years)     |
| Children with a Disability   | 1,533                              | 5.91%<br>(59.1/1,000)            | 6.38%<br>(63.8/1,000) |
| Children in Care   | 99                                 | 0.38                             | 0.50%                 |
|  |                                    |                                  |                       |

## Appendix 2

# Terms of Reference for Kilkenny Children and Young People's Services Committee

### 1. Purpose

The purpose of **County Kilkenny Children and Young People's Services Committee** will be to provide strategic direction and leadership to ensure effective interagency co-ordination and collaboration in order to achieve the best outcomes for all children and young people in County Carlow.

### 2. Term

These Terms of Reference are effective from April 2016 and continue until further notice and will be reviewed on an annual basis

### 3. Membership

| Name                                     | Position / Organisation   |
|--|---|
| Roisin Boyd, <i>Chairperson</i>          | Area Manager, Carlow, Kilkenny and South Tipperary, Tusla Child and Family Agency     |
| Mary Mulholland, <i>Vice Chairperson</i> | Directors of Services, Kilkenny County Council  |
| Stephen O'Connor                         | Community Section, Kilkenny County Council  |
| Sarah Barron                             | Kilkenny Carlow Education and Training Board  |
| Sheila Clarke                            | National Education Welfare Board  |
| Dr Fiona Cotter                          | Carlow Kilkenny HSE Community Services  |
| Colin Keating                            | Carlow Kilkenny HSE Substance Misuse Team   |
| Genevieve Crosby                         | Carlow Kilkenny HSE Primary Care Psychology   |
| Joan Dunne                               | PPFS Manager, Tusla Carlow, Kilkenny and South Tipperary                              |
| Sgt Elaine Dalton                        | An Garda Síochána, Protective Service Unit  |
| Mary Mescal                              | Ossory Youth  |
| Stephen Murphy                           | PPN Family Support Sector   |
| Ber Brophy                               | PPN Family Support Sector   |
| Martin Rafter                            | County Kilkenny Leader Partnership  |
| Mary O'Neill                             | St John's Junior School, Irish Primary Principals Network (IPPN)                      |
| Cathnia O'Muircheartaigh                 | Coláiste Pobal Osraí– National Association of Principals and Deputy Principals (NAPD) |
| Claire McNamara                          | Tusla Commissioning Manager, Waterford / Wexford                                      |
| Gretta Murphy                            | Kilkenny County Childcare Committee   |
| Breda Harding                            | Department of Social Protection   |
|  | Probation and Welfare Service   |

Mairéad Maddock, Co-ordinator of the County Kilkenny Children and Young People's Services Committee

- Membership will be reviewed every 3 years
- New members may be nominated at any time, with the agreement of the Kilkenny CYPSC and in accordance with the guidelines of the *Blueprint for the Development of Children and Young People's Services Committees, DCYA, June 2015*
- Members representing a network of organisations may deputise a substitute rep. from another organisation in the network to attend a meeting in his/her place, where necessary
- Members representing a network of organisations will be required to ensure that the work of the CYPSC is communicated to all organisations in the network and that they also bring communications from all the network bodies to the CYPSC

#### 4. Roles and Responsibilities

- Chairperson: Area manager, Tusla Child & Family Agency, will provide leadership and direction; will ensure effectiveness of CYPSC and in the delivery of the CYPP; ensure active participation of all members and ensure appropriate interaction between CYPSC and external stakeholders
- Vice-Chairperson: County Council representative: will support the chairperson; will chair the CYPSC in the absence of the Chairperson; ensure a balance between Tusla and other member organisations
- Members will:
  - be of sufficient seniority to represent their agency and to exercise decision-making powers
  - be expressly mandated by their parent organisation to communicate CYPSC work across their organisation
  - provide regular updates on
  - participate on working subgroups of CYPSC from time to time, as appropriate

#### 5. Meetings

- All meetings will be chaired by the Tusla Area Manager or by the County Council representative
- A meeting quorum consist of ⅓ of the total membership of the CYPSC + 1
- Decisions will be made by majority agreement
- Meeting agendas and minutes will be provided by the Co-ordinator, in consultation with the Chairperson. This includes:
  - » preparing agendas and supporting papers;
  - » preparing minutes/meeting notes and information
- There will be a minimum of 5 meetings per year and the CYPSC will meet in the County Hall or other venues, as agreed from time to time
- Duration of meetings will 2 hours and take place on a day agreed by the membership
- If required, sub-group meetings will be arranged outside of these times at a time convenient to sub-group members
- A schedule of meetings will be agreed at the beginning of each calendar year

#### 6. Amendment, Modification or Variation

The Terms of Reference may be amended, modified or varied in writing after consultation and agreement by members of County Kilkenny CYPSC

## Appendix 3

## Membership of CYPSC Subgroups

|                           |  |
|---------------------------|--|
| <b>Healthy and Active</b> | HSE Substance Misuse Team                  |
|                           | Foróige Youth Services                     |
|                           | Tusla Waterford                            |
|                           | Kilkenny Leader Partnership                |
|                           | Kilkenny Sports and Recreation Partnership |
|                           | Ossory Youth                               |
|                           | Newpark FRC                                |
|                           | Regional Suicide Prevention Office         |

|                               |  |
|-------------------------------|--|
| <b>Education and Economic</b> | National Council for Special Education     |
|                               | Home School Community Liaison              |
|                               | Educational Welfare Service                |
|                               | Kilkenny County Childcare Committee        |
|                               | Kilkenny Early Years Project               |
|                               | Special School                             |
|                               | Kilkenny Carlow Education & Training Board |
|                               | Ossory Youth                               |
|                               | Irish Primary Principals Network           |
|                               | Enable Ireland                             |
|                               | School Completion Programme                |

|   |   |
|---|---|
| <b>PPFS Steering/Safe &amp; Protected</b> | Tusla Fostering Service                     |
|   | Teen Parent Support Programme               |
|   | Foróige Youth Services                      |
|   | Tusla Parenting Programme                   |
|   | HSE Substance Misuse team                   |
|   | Garda Protective Services Unit              |
|   | Educational Welfare Service                 |
|   | Garda Junior Liaison Service                |
|   | KASA Rape Crisis centre                     |
|   | Amber Women's Refuge                        |
|   | Kilkenny County Council, Housing Section    |
|   | Ossory Youth                                |
|   | Newpark Family Resource centre              |
|   | Droichead Family Resource centre, Callan    |
|   | CFSN Senior Co-ordinator                    |
|   | School Completion Programme                 |
|   | The Mill Family Resource centre, Urlingford |
| Fr McGrath Family Resource Centre         |   |

|                                      |  |
|--------------------------------------|--|
| <b>Domestic Abuse Action Network</b> | Amber Women's Refuge                             |
|                                      | Kilkenny Rape Crisis Centre                      |
|                                      | Traveller Community Worker                       |
|                                      | Tusla Prevention, Partnership and Family Support |
|                                      | Good Shepherd Centre                             |
|                                      | Foróige  |
|                                      | Ossory Youth                                     |
|                                      | HSE Mental Health Services                       |
|                                      | Garda Síochána Protective Services               |
| Men's Development Network            |  |

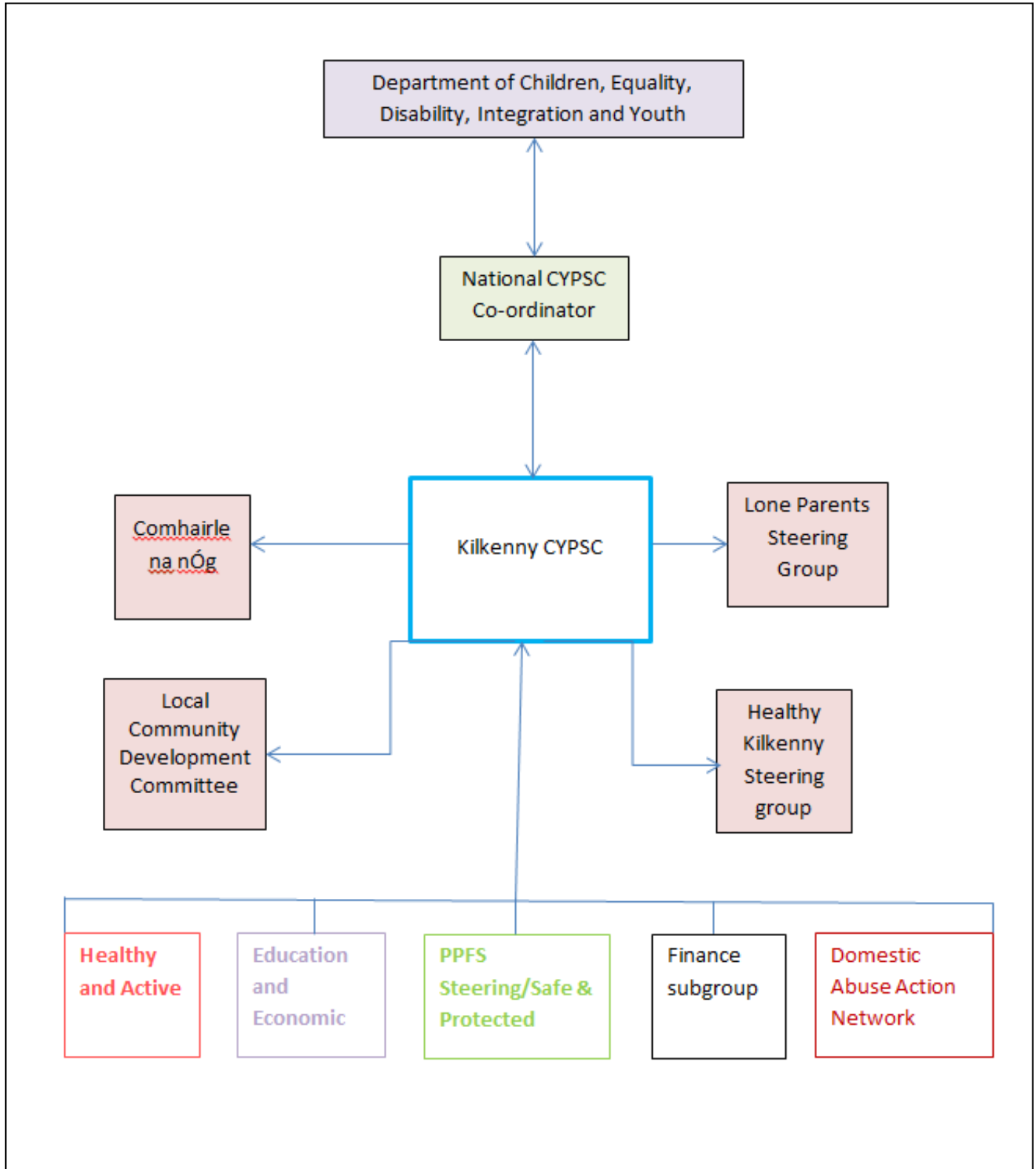
|  |                                       |
|--|---------------------------------------|
|  | Court Service                         |
|  | HSE Traveller Mental Health Programme |
|  | Droichead FRC, Callan                 |
|  | Newpark Close FRC                     |
|  | TheMill FRC, Urlingford               |
|  | Fr McGrath FRC                        |
|  | Tusla Social Worker                   |

|                         |                         |
|-------------------------|-------------------------|
| <b>Finance subgroup</b> | PPFS Manager            |
|                         | Kilkenny County Council |
|                         | Tusla                   |
|                         | Fr McGrath FRC          |



## Appendix 4:

### CYPSC, subgroups and local links



## Appendix 5

### References

- Barnardos (2016): *What's the harm? A child centred response to domestic abuse*
- Boyd, R. (2019): *Tusla Data Analysis: Carlow, Kilkenny, and South Tipperary*
- Callan Workhouse Union (2018): *Playing our Part: Our Lives – Children and Young People in Kilkenny today*
- Department of Children and Youth Affairs (2014): *Better Outcomes Brighter Futures; The National Policy Framework for Children and Young People 2014–2020*
- Department of Children and Youth Affairs (2014): *The Blueprint for the development of CYPSC (2015 – 2017)*
- Department of Children and Youth Affairs (2015): *Children First Act 2015*
- Department of Children and Youth Affairs (2015): *National Strategy on Children and Young People's Participation in Decision-Making, 2015 – 2020*
- Department of Children and Youth Affairs (2015): *National Youth Strategy 2015-2020*
- Department of Children and Youth Affairs (2016): *Second National Strategy on Domestic, Sexual and Gender-based Violence 2016 – 2021*
- Department of Children and Youth Affairs (2016): *Growing Up in Ireland Report*
- Department of Children and Youth Affairs (2016): *State of the Nation's Children, Ireland 2016*
- Tusla Child and Family Agency (2016): *The Prevention, Partnership and Family Support (PPFS) Programme Brochure*
- Kilkenny County Council (2015): *Kilkenny Local Economic and Community Plan*
- Kilkenny Local Community Development Committee (2018): *Healthy Ireland Community Plan*
- Kilkenny County Council (2018): *Right to Read Action Plan (Library Service)*
- Kilkenny Sports and Recreation Partnership (2015): *Strategic Plan 2015-2019*
- Kilkenny and Carlow ETB (2018): *Youth Work Plan 2018-2022*
- Kilkenny Leader Partnership (2020): *An examination of the Barriers to Employment for travellers in County Kilkenny*
- Institute for Action Research (2018): *Sociodemographic Statement for County Kilkenny*
- Department of Health (2016): *A Healthy Weight for Ireland: Obesity Policy and Action Plan 2016 – 2025*
- Department of Health (2016): *National Physical Activity Plan for Ireland 2016*
- Department of Health (2019): *HSE Hidden Harm Project 2019*
- Department of Health (2015): *National Sexual Health Strategy 2015 - 2020*
- Department of Education and Skills (2011): *Literacy and Numeracy for Learning and Life – The National Strategy to Improve Literacy and Numeracy among Children and Young People 2011-2020*
- Department of Education and Skills (2017): *NCSE Statement of Strategy 2017-2021*
- Department of Education and Skills (2017): *National Wellbeing Curriculum*
- Department of Education and Skills (2018): *Wellbeing Policy Statement and Framework for Practice 2018–2023 (Revised 2019)*
- National Suicide Research Foundation: *Statistics Report 2018*

National Office for Suicide Prevention (2018): *Annual Report 2018*

Regional Suicide Resource Office (2018): *Connecting for Life – Suicide Prevention Action Plan – Kilkenny, 2018 -2020*

## Appendix 6

### Kilkenny Children and Young People's Services Committee Sociodemographic Statement

#### Executive Summary

[Click here](#) to view the full report

#### Executive Summary

This socio-economic statement represents one strand of a multi-pronged approach on the part of The County Kilkenny Children and Young People's Services Committee (CYPSC) to informing its strategic plan 2018-2020. It is largely quantitative, and draws mainly on data recorded by the Central Statistics Office (CSO) and public bodies. These data provide signposts and indicators, and they offer baselines against which progress can be measured over the coming years. In addition, the socio-economic statement contains a series of maps. These allow for a detailed spatial analysis of the lives of children and young people. This examination of the meso- and micro-level geographies within County Kilkenny proved to be integral to informing the CYPSC strategy, as it identified specific areas of need and potential.

The socio-economic statement reveals that children and young people represent a very sizeable population cohort in County Kilkenny. Relative to the State and the South-East Region, the county has **an above average proportion of persons aged up to 18 years**. Over one-quarter of the population (26.1%) is aged under 18 years. There are relatively fewer persons aged 18 to 24 years, as most young people attending Higher Education Institutes (HEIs) are obliged to leave the county.

County Kilkenny's current demographic composition is such that one can anticipate further and **sustained growth in the number of children across the county** over the next decade; the demographic vitality ratio is stronger than the regional average. The current and anticipated spatial distribution of children and young people across the county is such that agencies ought to be active in urban, rural and intermediate zones. The needs analysis, based on the socio-economic data, points to the importance of **accessible services and enhanced public transport in rural areas** in particular. Indeed, the data reveal a myriad of issues with **strong local features and determinants**, such that there is, in many communities, a need for local level and bespoke interventions. Thus, while County Kilkenny, as a unit, may record better outcomes than the South-East Region, the more fine-grained geographical analysis shows that **considerable needs exist, and increased investments are required in many areas**.

While County Kilkenny and the South-East Region are not as diverse as other parts of Ireland in respect of nationality and ethnicity, there are significant clusters of **non-Irish nationals in several locations**. These are mainly in the more urbanised parts of the county. Children are proportionately over-represented among the migrant populations, and **over one-in-four (323 children) of these, does not declare his/ her nationality** – thus indicating, in many cases, the challenging backgrounds and circumstances from which they have come. Non-Irish nationals can face considerable barriers in integrating into Irish society, and **language barriers** frequently prevent them from accessing services. In County Kilkenny, the most widely-spoken minority languages are Polish and French.

There has been a significant increase in the population of **Irish Travellers** in County Kilkenny, and an age-level analysis of this population reveals that over **half are under twenty years of age**.

Health-related variables are integral to understanding the lives of children and young people. Data on ability / disability reveal that just over five percent of children (aged up to 14) have a defined disability. This figure increases to just under ten percent (9.6%) for persons aged 15 to 19 years. **The most common forms of disability are intellectual ones and difficulties in learning, remembering and concentrating.** Of those children and young people who have disabilities, several have more than one, thus emphasising the importance of holistic, child-centred and family-centred approaches.

Since the advent of the most recent recession (in 2010), the birth rate – nationally and in County Kilkenny - has been steadily declining, after several years of growth. Meanwhile, the **average age** of mothers has been increasing consistently over recent decades. It now stands at **31 years for first-time mothers**. Rates of breastfeeding are broadly in line with the national average, but are below international norms. The proportion of domiciliary births is low, relative to other European countries. Meanwhile, the **percentage of mothers visited by Public Health Nurses (PHNs) is above the national average**, as is the proportion of babies screened. The data on immunisation reveal the **successes achieved by the HSE in promoting uptake**, particularly in respect of the MMR and 4-in-1 vaccines. However, they reveal a drop (since 2015) in the numbers presenting for the HPV vaccine.

Educational attainment is a significant determinant of a child's life trajectory. The data in this regard reveal **below average levels of educational attainment** in County Kilkenny and in the South-East Region, relative to the rest of Ireland. This is particularly the case in respect of the proportion of the population with a third-level qualification. The areas with the highest levels of educational disadvantage are the rural north-east, north-west and south-west of the county. **Inter-generational underperformance** in education appears to be a feature here, thus indicating a need for interventions to break the cycle of disadvantage in tandem with promoting social inclusion and community development. **Access to high-quality and affordable childcare is important** in promoting educational attainment – for early child socialisation and in enabling parents to access education, training and employment. The community and voluntary sector locally has been to the fore in providing childcare services. However, the data on affordability reveal a year-on-year increase in the cost of sessional childcare. **The county's DEIS (Delivering Equality of Opportunity in School) schools and those offering the SCP (School Completion Programme) do very valuable work in enabling young people to remain in education and to secure a qualification.** However, the education landscape has changed very considerably since DEIS allocations were decided, such that it is time to revisit the criteria and associated coverage, so that these are more reflective of contemporary realities.

Housing tenure and security affect student well-being and progression. While the overall proportion of children and young people **living in rented accommodation** is below the regional average, there are several villages and urban neighbourhoods which have considerable concentrations of families, who are renting from the local authority or private landlords. These are among the neighbourhoods with the highest levels of **deprivation and social exclusion** in the county.

Agencies such as An Garda Síochána, Tusla, the HSE and Probation Services engage with youth-at-risk, and the data from these bodies show that referral rates are similar over time which, in the context of declining agency budgets over the past decade, implies **pressures on service providers**. It is noteworthy that over one-quarter of children referred to Tusla were referred more than once, with the most common reason for referrals being ‘child welfare.’ Referrals to Tusla are also associated with children engaging in substance abuse.

Kilkenny’s economy, as measured by labour force participation rates, performs stronger than that of the South-East Region. However, there are **several areas with persistent unemployment**, many of them rural. The data suggest that the rural economy is stronger in South Kilkenny than in the north of the county and that changes in the nature and structure of the farming sector have had a negative impact on rural villages and small towns. As these villages come under economic pressure, their ability to be attractive to families and young people declines.

Family composition also determines the well-being and quality of life of children and young people. **Just over one-in-five families is headed by a lone parent** – the vast majority by a lone mother.

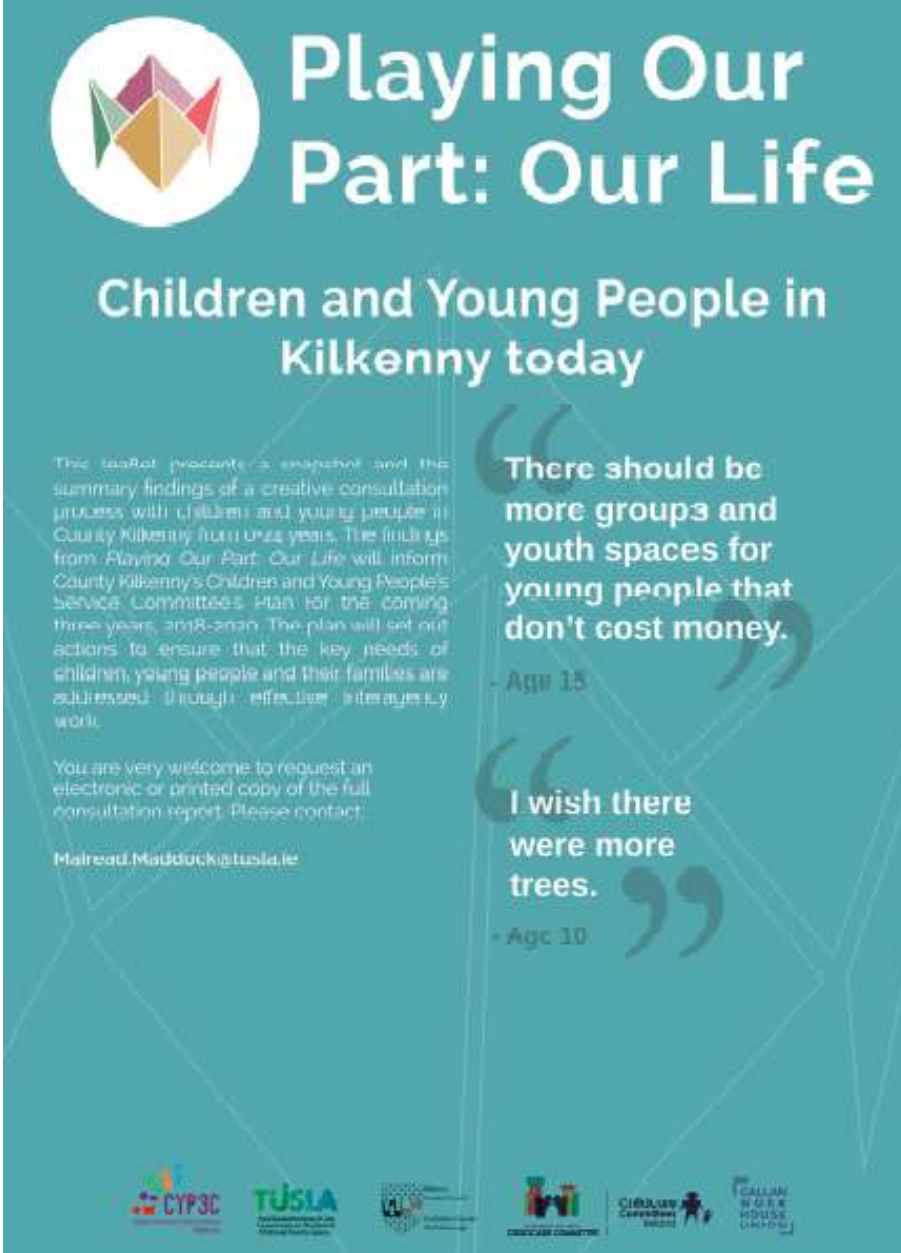
The Haase-Pratschke Index of Affluence and Deprivation provides a composite measure of socio-economic status in respect of particular geographies, and can be computed at Electoral Division (ED) and Small Area (SA) levels, using data from the Census of Population. The Index presents data at points in time, and is widely used to inform decision-making in respect of public policy and local development strategies. It incorporates multiple variables including employment / unemployment, housing tenure, age dependency, population change, lone parent ratios and accessibility. It reveals that **County Kilkenny is slightly more deprived than the State as a whole**, which may run counter to the popular perception of the county. That said, Kilkenny’s overall score indicates that **the county is more affluent than other counties in the South-East Region**. The Haase-Pratschke computation shows that within the county, the most affluent areas are in the commuter belt immediately surrounding Kilkenny City. On the other hand, **the areas with the highest levels of deprivation are the villages in the north-east and north-west of the county, the east of the county along the Carlow – Wexford border and the south-west of the county**. When the Haase-Pratschke data are mapped for Kilkenny and the surrounding counties, there is evidence of a ‘border effect,’ with areas of deprivation straddling county boundaries, particularly with Tipperary and Wexford. This spatial pattern points to the need for increased inter-county collaboration in addressing social exclusion and in enabling places to fully realise their development potential.

This comprehensive socio-economic statement reveals that the phenomena and variables that affect and shape the lives of children and young people are multi-varied and inter-related. Improving their lives and promoting better outcomes and brighter futures require inter-agency collaboration and partnership. Enhancing children’s lives also behoves agencies to work in partnership with local stakeholders including schools, community bodies, youth services, the private sector and other social partners. Above all, it requires systematic engagement and consultation with children and young people – both directly and through intermediate structures. As the CYPSC strategy is rolled-out over the next three years, and as partners use the data presented here, they will be better able

to monitor the outputs and impacts of their actions, and continue to be responsive to the needs of children and young people.

## Appendix 7: Consultation with Children and young People - Summary

Full Report available: [https://issuu.com/workhouseunion/docs/playing\\_our\\_part\\_report\\_with\\_3mm\\_tr](https://issuu.com/workhouseunion/docs/playing_our_part_report_with_3mm_tr)



**Playing Our Part: Our Life**

**Children and Young People in Kilkenny today**

This leaflet presents a snapshot and the summary findings of a creative consultation process with children and young people in County Kilkenny from 0-22 years. The findings from *Playing Our Part: Our Life* will inform County Kilkenny's Children and Young People's Service Committee's Plan for the coming three years, 2018-2020. The plan will set out actions to ensure that the key needs of children, young people and their families are addressed through effective inter-agency work.

You are very welcome to request an electronic or printed copy of the full consultation report. Please contact:

Mairead.Maddock@tusla.ie

**“There should be more groups and youth spaces for young people that don't cost money.”**

- Age 15

**“I wish there were more trees.”**

- Age 10

**CYP3C**  
Children's Partnership  
County Wick

**TUSLA**  
The National Children's  
Protective Agency

**WV**  
Wicklow Voluntary  
Council




**WV**  
Wicklow Voluntary  
Council

**CHILDREN'S  
COUNCIL  
WICK**

**WICK  
WORKHOUSE  
UNION**



## - Findings: At a Glance -

|  <p><b>ACTIVE AND HEALTHY, PHYSICAL AND MENTAL WELLBEING</b></p> |  <p><b>ACHIEVING FULL POTENTIAL IN ALL AREAS OF LEARNING AND DEVELOPMENT</b></p>                               |  <p><b>SAFE AND PROTECTED FROM HARM</b></p>   |  <p><b>ECONOMIC OPPORTUNITY AND SECURITY</b></p>  |  <p><b>CONNECTED, RESPECTED AND CONTRIBUTING</b></p>  |
|---|---|--|---|--|
| <p><b>Outdoor Play</b></p> <p>More opportunities to be out and about in nature.</p>   | <p><b>Child and Young Person-Centred Supports</b></p> <p>For many children and young people transitions in the school system need supports, as well as supports to achieve their potential.</p> | <p><b>Secure Home Life</b></p> <p>The need to have a safe and secure home and the worries around homelessness and financial problems.</p>  | <p><b>Financial security</b></p> <p>Cost of education, especially at post level, is an issue for many young people.</p>   | <p><b>Identity, LGBT+</b></p> <p>Young people experience a lack of support and understanding in schools regarding sexuality and identity.</p>  |
| <p><b>Mental Wellbeing</b></p> <p>Need for better supports and more recognised young people's mental health and wellbeing.</p>                    | <p><b>Academic Stress</b></p> <p>Children and young people reported high levels of stress in relation to homework and to the pressures of the 'points race'.</p>                                | <p><b>Inclusive and Accessible Public Space</b></p> <p>The need for more safe, accessible and welcoming places for socialising.</p>  | <p><b>Public Transport</b></p> <p>The need for adequate public transport, especially towards Kildare, is highlighted in order to allow fuller participation in all aspects of life.</p> | <p><b>Access to Cultural Activity and Self-Expression</b></p> <p>A shortage of access to cultural activity, opportunities for meaningful self-expression and participation in matters affecting their lives.</p> |
| <p><b>Relationships</b></p> <p>Family relationships are a significant area of vital importance in the lives of children and young people.</p>     | <p><b>Pastoral Care</b></p> <p>The need for a 'wrap around' approach in the education system, catering for social and emotional needs as well as developing academically.</p>                   | <p><b>Online Safety and Awareness</b></p> <p>The need for more awareness among parents and teachers of the vulnerability of children in relation to the internet and social media.</p> | <p><b>Parental Reliance</b></p> <p>Reliance on parents raises many issues around self-determination and independence at teenage levels.</p>   | <p><b>Social Inclusion</b></p> <p>Many groups of young people expressed a sense of being marginalised in their space and judged for where they come from.</p>  |
| <p><b>01</b></p>  | <p><b>02</b></p>  | <p><b>03</b></p>   | <p><b>04</b></p>  | <p><b>05</b></p>   |

## Appendix 7

### List of Acronyms

|              |  |
|--------------|--|
| <b>BOBF</b>  | Better Outcomes, Brighter Futures                        |
| <b>CFSN</b>  | Child and Family Support Network                         |
| <b>CHO</b>   | Community Healthcare Organisations                       |
| <b>DCYA</b>  | Department of Children and Youth Affairs                 |
| <b>DEIS</b>  | Delivering Equality of Opportunity in Schools            |
| <b>DES</b>   | Department of Education and Skills                       |
| <b>ED</b>    | Electoral Districts                                      |
| <b>EWS</b>   | Educational Welfare Service (now TESS)                   |
| <b>FRC</b>   | Family Resource Centre                                   |
| <b>GMS</b>   | General Medical Service                                  |
| <b>HI</b>    | Healthy Ireland  |
| <b>IPPN</b>  | Irish Primary Principals Network                         |
| <b>KCETB</b> | Kilkenny and Carlow Educational Welfare Board            |
| <b>KLP</b>   | Kilkenny Leader Partnership                              |
| <b>KRSP</b>  | Kilkenny Sports and Recreation Partnership               |
| <b>LA</b>    | Local Authority  |
| <b>LCDC</b>  | Local Community Development Committee                    |
| <b>LECP</b>  | Local Economic and Community Plan                        |
| <b>LHO</b>   | Local Health Office                                      |
| <b>NAPD</b>  | National Association of Principals and Deputy Principals |
| <b>NEPS</b>  | National Educational Psychological Service               |
| <b>NOSP</b>  | National Office for Suicide Prevention                   |
| <b>NSRF</b>  | National Suicide Research Foundation                     |
| <b>PCRS</b>  | Primary Care Reimbursement Service                       |
| <b>PPN</b>   | Public Participation Network                             |
| <b>PPFS</b>  | Prevention, Partnership and Family Support               |
| <b>TESS</b>  | Tusla Education Support Service                          |