



Kerry Children and Young People's Services Committee

**Children and Young People's Plan
2018- 2020**

Contents

Contents	2
Forward	3
Section 1: Introduction	4
<i>Background to Children and Young People’s Services Committees</i>	7
<i>Who we are</i>	8
<i>Achievements to date</i>	11
<i>Challenges & Learning</i>	15
<i>How the Children and Young People’s Plan was developed</i>	16
Section 2: Socio-Demographic Profile of Kerry	19
Section 3: Overview of Services to Children and Families in Kerry	22
Section 4: Local Needs Analysis in Kerry	26
Section 5: Summary of Children and Young People’s Plan for Kerry.....	31
Section 6: Action Plan for Kerry Children and Young People’s Services Committee.....	32
Section 7: Monitoring and Review	53
Section 8: Appendices.....	Error! Bookmark not defined.

Contact

Kerry Children & Young People’s Services Committee (CYPSC) welcomes comments, views & opinions about our Children & Young People’s Plan.

Please contact: Claire O’Toole,
 Coordinator, Kerry CYPSC,
 Child & Family Agency,
 Rathass,
 Tralee,
 Co. Kerry
 066-7199764
 Claire.otoole@tusla.ie

Copies of the Kerry Children & Young People’s Plan 2018-2020 can be downloaded from:
www.kerrychildrenservices.com or www.cypsc.ie

Forward

Kerry Children & Young People's Services Committee (CYPSC) works to ensure effective services are delivered in the most efficient way to improve the lives of children, young people & families in county Kerry. Kerry CYPSC was established in September 2010 & is a partnership of statutory and community & voluntary services. The Kerry Children & Young People's Plan 2018 – 2020 is an overarching, multi-agency plan to address priorities for children, young people & families in Kerry.

As Chairperson I am delighted to publish our third three year Kerry Children & Young People's Plan. This document sets out the key priorities for children, young people & families in county Kerry across a broad range of action areas in line with *Better Outcomes Brighter Futures: The National Policy Framework for Children & Young People 2014-2020* (2014). Work in our priority action areas will be overseen by interagency working groups; key priorities include:



The programme outlined in the Kerry Children & Young People's Plan 2018-2020 will build on the previous two Kerry CYPSC Workplans (2011-2013 & 2014-2017) through collaborative, interagency, partnership working with all relevant services & supports in the county. It will build on the successes of the previous workplans & on-going commitment of the committee & all our stakeholders. The Kerry Children & Young People's Plan 2018-2020 is a 'live' document which will be reviewed & updated as required. The focus of our work is very much on prevention & early intervention as well as listening to & including the voice of children, young people & families in Kerry. It sets out our commitment to better outcomes for all children, young people 0-24 & families in Kerry recognising the importance of parents & families and the support & engagement of communities across the county.

On behalf of Kerry CYPSC I would like to thank all those who have supported the development of this plan including parents & young people; partner organisations & committee members. I would like to acknowledge the hard work and commitment of our many partners & advocates. We look forward to delivering improved outcomes for children, young people & families in county Kerry with your support over the coming years.

Oliver Mawe

Chairperson, Kerry Children & Young People's Services Committee, June 2018

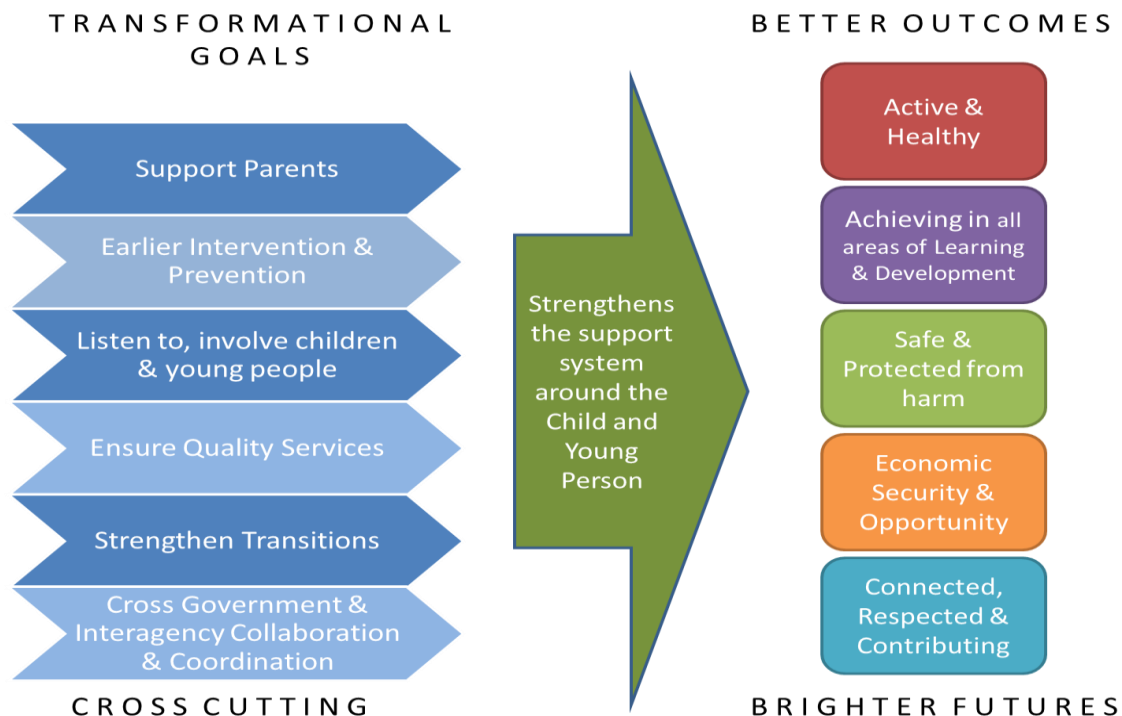
Section 1: Introduction

The purpose of the Children and Young People's Services Committees is to secure better outcomes for children and young people through more effective integration of existing services and interventions at local level. CYPSCs are key interagency structures identified by Government to plan & coordinate services for children & young people aged 0-24 & families in every county in Ireland. CYPSCs are part of the national initiative being led by the Department of Children & Youth Affairs (DCYA).

CYPSCs work towards the five national outcomes for children and young people in Ireland. The five national outcomes are underpinned by six transformational goals. The five national outcomes are that children and young people

1. **Are active and healthy, with positive physical and mental wellbeing**
2. **Are achieving full potential in all areas of learning and development**
3. **Are safe and protected from harm**
4. **Have economic security and opportunity**
5. **Are connected, respected and contributing to their world**

Five national outcomes for children and young people in relation to the six transformational goals



The central purpose of a Children and Young People's Services Committee is to ensure effective interagency co-ordination and collaboration to achieve the best outcomes for all children and young people in its area. This is achieved through enhanced planning, co-ordination and oversight of policy implementation, planning and service provision locally. Children and Young People's Services Committees (CYPSCs) will act as the structure whereby services can work together in a systematic manner to achieve shared goals and which bridge national policy with local provision.

A well-functioning CYPSC will harness the collective strengths of its member agencies to ensure a planned, co-ordinated and concerted response to the needs of children and young people at local level. It is not the purpose of a CYPSC to displace existing structures of accountability which apply to member agencies. However, at a local level members will have the opportunity to test local implementation and to complement national planning by identifying opportunities for collaboration, obviating duplication of effort and ensuring that services are both flexible to locally identified needs and informed by identified national priorities.

Each CYPSC has an explicit role to play in contributing to the achievement of the vision, aspirations, priorities and desired outcomes expressed in Better Outcomes, Brighter Futures so that these become a reality for children and young people at local level, where front-line services are delivered. Each CYPSC will focus on identifying gaps and support synergies in service delivery, leading to the development of a commonly agreed plan for children and young people in its local area. In addition, service plans by member agencies should also have due regard to both Government policy and local priorities as identified by the CYPSC. Each CYPSC should also actively promote the development of quality practices and the delivery of quality services within its area.

Objectives of CYPSCs

CYPSCs are required to bring together all relevant statutory, community & voluntary services providing services & supports to children, young people & families in their county. In order to develop their programme of work, CYPSC are required to:

- **Ensure the needs of children & young people are identified & addressed:**
 - Identify & address local and national emerging issues relating to children & young people.
- **Planning & coordination of services:**
 - Plan & coordinate services for children & young people in order to improve outcomes.
 - Oversee the effective implementation of national & regional policies, strategies & priorities,
- **Ensuring effective collaboration & interagency working:**
 - Ensure effective collaboration between services working with & for children & young people within the CYPSC area.
 - Strengthen collaborative decision making capacity at local level, recognising & responding to the voice of children & young people.
 - Support the implementation of relevant, innovative interagency initiatives of member agencies.
- **Promoting quality, evidence informed planning & practice:**
 - Promote the use of quality, evidence informed & outcomes focussed approaches to enhance service provision for children & young people.
- **Optimising the use of resources:**
 - Inform the planning & provision of resources across the CYPSC area with a view to enabling the optimum use of resources at local level & ensure complementarity between CYPSCs & agencies' service plans in respect of their priorities.
 - Inform the allocation of resources & work towards becoming a vehicle for facilitating joint commissioning of services for children, young people & families.
 - Inform national policy & decision making with regard to resource allocation for services for children & young people.

- **Promoting best participation practice:**
 - Support national initiatives that promote the participation of children & young people in decision making.
 - Coordinate interagency training in participation practice locally.

How CYPSCs will Function to Ensure Improved Outcomes

CYPSCs ensure the connection of national policy with local implementation in their areas through planning and co-ordinating the provision of services for children and young people and by informing the deployment of resources, taking into account locally identified needs and those identified at national level, which can be advanced through a standardised approach across all CYPSCs.

Each local committee develops and oversees the implementation of a 3-year Children and Young People's Plan (CYPP), which is designed to improve outcomes for children and young people in the area. This CYPP outlines a committee's priorities and includes:

- **a socio-demographic profile of the area;**
- **an audit of services for children and young people in the area;**
- **an analysis of the needs of children and young people living in the area;**
- **A detailed action plan mapping the committee's planned actions to respond to its priorities.**

The CYPP is directly informed by a CYPSC's member agencies and related structures, while also having specific regard for the voice of children and young people. In addition, the CYPP will be linked to all member agencies' service plans, as well as to all other local and regional plans (such as the Local Economic and Community Plan for the county). Each committee provides the local mechanism through which statutory, community and voluntary service providers for children, young people and families will work together to leverage and make the most effective use of existing local resources to deliver on the objectives and actions of its plan.



Background to Children and Young People's Services Committees

Children and Young People's Services Committees in Ireland

The Office of the Minister for Children and Youth Affairs (OMCYA), now the Department of Children and Youth Affairs (DCYA), established the Children and Young People's Services Committees (formerly Children's Services Committees) in 2007 with the purpose of improving outcomes for children and families at local and community level. Since then CYPSCs have increased incrementally in number and are a key structure identified by Government to plan and co-ordinate services for children and young people, aged 0 – 24 years, in every county in Ireland.

CYPSCs bring a diverse group of agencies across the statutory, community and voluntary sectors in local county areas together to engage in joint planning of services for children and young people. All major organisations and agencies working locally on behalf of children and young people are represented. These committees work to improve the lives of children, young people and families at local and community level through integrated planning and improved service delivery.

Better Outcomes, Brighter Futures: the National Policy Framework for Children and Young People 2014 – 2020 underscores the necessity of interagency working and tasks Children and Young People's Services Committees with a key role in this regard.

Children and Young People's Services Committee in Kerry

Kerry Children's Services Committee was established in September, 2010; members include senior representatives from the Child & Family Agency, Kerry County Council, HSE, Kerry Education & Training Board, An Garda Síochána, Youth Probation Service, Kerry County Childcare Committee, Kerry Network of Family Resource Centres, South Kerry Development Partnership, North & East Kerry Development Partnership, Tusla Educational Welfare Services, Kerry Diocesan Youth Service, the Institute of Technology Tralee, Kerry Child & Adolescent Mental Health Service, the Southern Regional Drugs Task Force. Kerry CYPSC will oversee and direct the delivery of initiatives that will improve outcomes for children, and which require collaboration between services. Kerry Children's Services Committee has established working groups to address issues which have a significant impact on the lives of children and young people. Working groups include: Child & Youth Mental Health; Substance Misuse; Healthy Ireland; Progression Pathways for Young People 16-18 with ID, ASD & /or ABI; Parenting & Early Years; Prevention, Partnership & Family Support; Opportunities for Young People 16-24 Not in Education, Employment or Training; Youth Participation & Cultural Diversity; as well as a Research & Information Advisory Group.

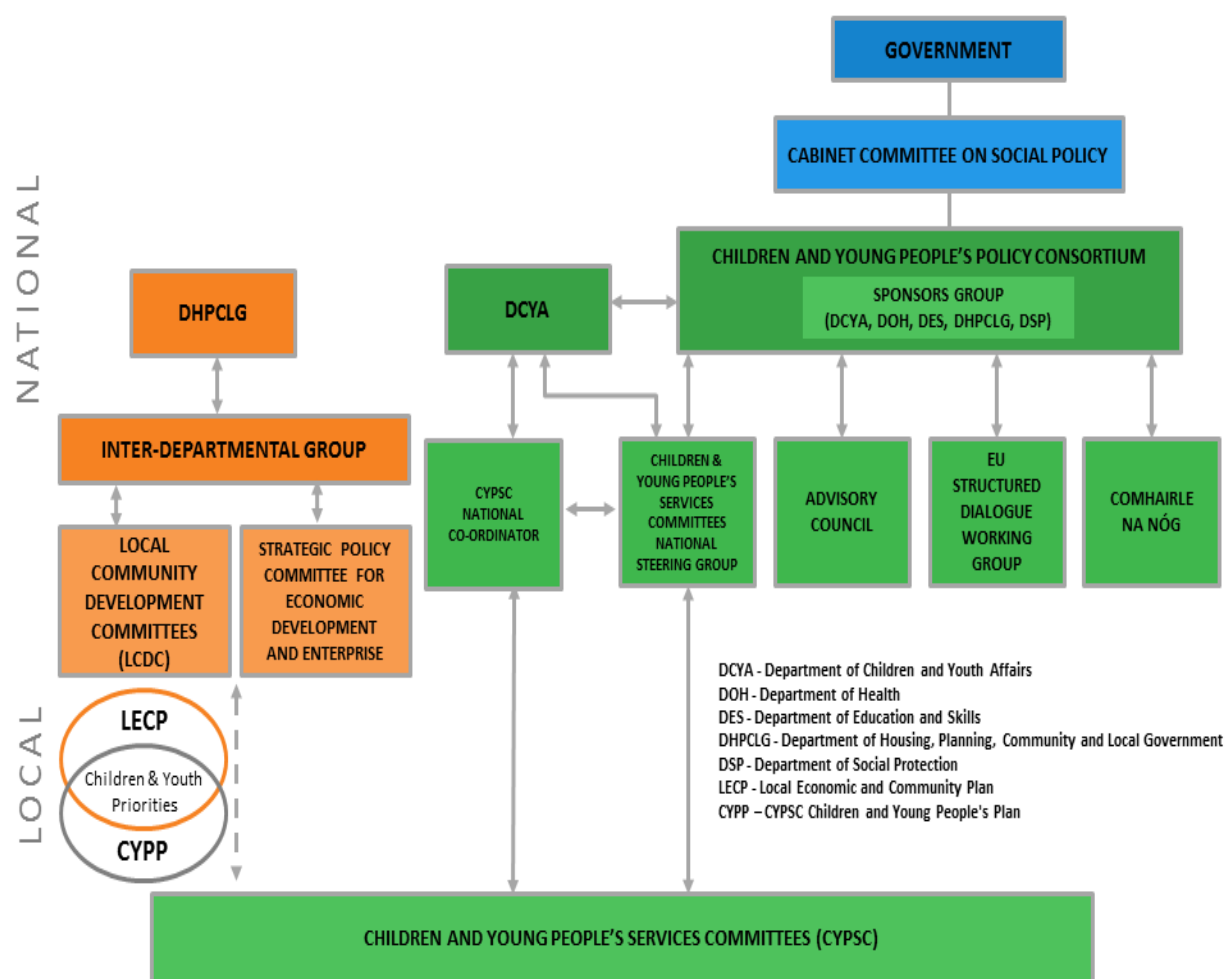
Who we are

The current membership of Kerry CYPSC is as follows:

Member	Organisation	Role
Mr Oliver Mawe	Tusla Child & Family Agency	Chairperson & CFA Area Manager Kerry
Mr Mike Scannell	Kerry County Council	Vice Chairperson & Director of Services Economic & Community Development
Inspector Paul Kennedy	An Garda Síochána	Inspector
Ms Majella Daly	HSE	HSE Primary Care Services Manager
Ms Ann O'Dwyer	Kerry Education & Training Board	Director of Schools & Chair of Progression Pathways Working Group
Ms Miriam Galvin	Kerry Education & Training Board	Youth Officer
Mr Darren Broomfield	Youth Probation Service	Senior Probation Officer
Ms Gemma O'Brien	Kerry Diocesan Youth Service	Senior Manager & Chair of Youth Participation & Cultural Diversity Working Group
Ms Denise Quinlan	Kerry County Childcare Committee	Childminding Advisory Officer
Mr Dan O'Shea	Tusla, National Educational Welfare Service	Regional Manager, Munster
Ms Nancy Holmes Smith	Kerry Network of Family Resource Centres	SW Kerry FRC Manager
Mr David Lane	HSE Drugs & Alcohol Services	Coordinator, Cork & Kerry
Dr Claire Craven	Kerry Child & Adolescent Mental Health Service	Senior Consultant Child & Adolescent Psychiatrist
Ms Deirdre Kearin	North, West & East Kerry Development Partnership	Education Officer
Ms Mairead O'Sullivan	South Kerry Development Partnership	Education Officer
Mr Jimmy Mulligan	South West Counselling Centre	CEO & Chair of Child & Youth Mental Health Working Group
Ms Ann Moynihan	Tusla Prevention Partnership & Family Support	Principal & Chair: Parenting & Early Years; PPFS Working Groups
Ms Aisling Sharkey	Institute of Technology Tralee	Head of Department: Dept of Health & Social Studies; Chair as required of the Information Advisory Group
Ms Claire O'Toole	Kerry Children & Young People's Services Committee	Coordinator

The members of Kerry CYPSC & its working groups are fully committed to the implementation of the actions outlined in this 3 year workplan between 2018 & 2020. Children & young people are defined as those aged 0-24 years. We recognise this workplan as a 'live' document & will endeavour to address issues as they emerge over the course of the next 3 years in order to ensure positive outcomes for children, young people & families in Kerry.

Kerry CYPSC Links to Other Structures:



The Department of Children & Youth Affairs provides strategic & policy direction for all CYPSCs. All CYPSCs are accountable nationally to the National CYPSC Steering Group & the DCYA & in turn to the Children & Young People's Policy Consortium, Cabinet Committee on Social Policy & National Government.

Locally, Kerry CYPSC links with a number of local structures:

Kerry Local Community Development Committee (LCDC)

Kerry County Council is the lead agency for the Kerry Local Community Development Committee. Kerry LCDC is an interagency structure required to develop a 6 year strategic Local Economic & Community Plan (LECP) in order to oversee the coordination & spending of local community development & social inclusion funding.

The work and planning of both Kerry CYPSC & Kerry LCDC in respect of children and young people is framed by *Better Outcomes, Brighter Futures*. This provides the overarching framework for the development and implementation of policy and services for children and young people. Beyond the general principles shared by all stakeholders, there are a number of areas for progression that are of mutual interest for the Department of Children and Youth Affairs and the Department of the Housing, Planning and Local Government. These include: -

- ensuring that local county-level implementation and monitoring through the CYPSC will be formally linked with LCDC, and

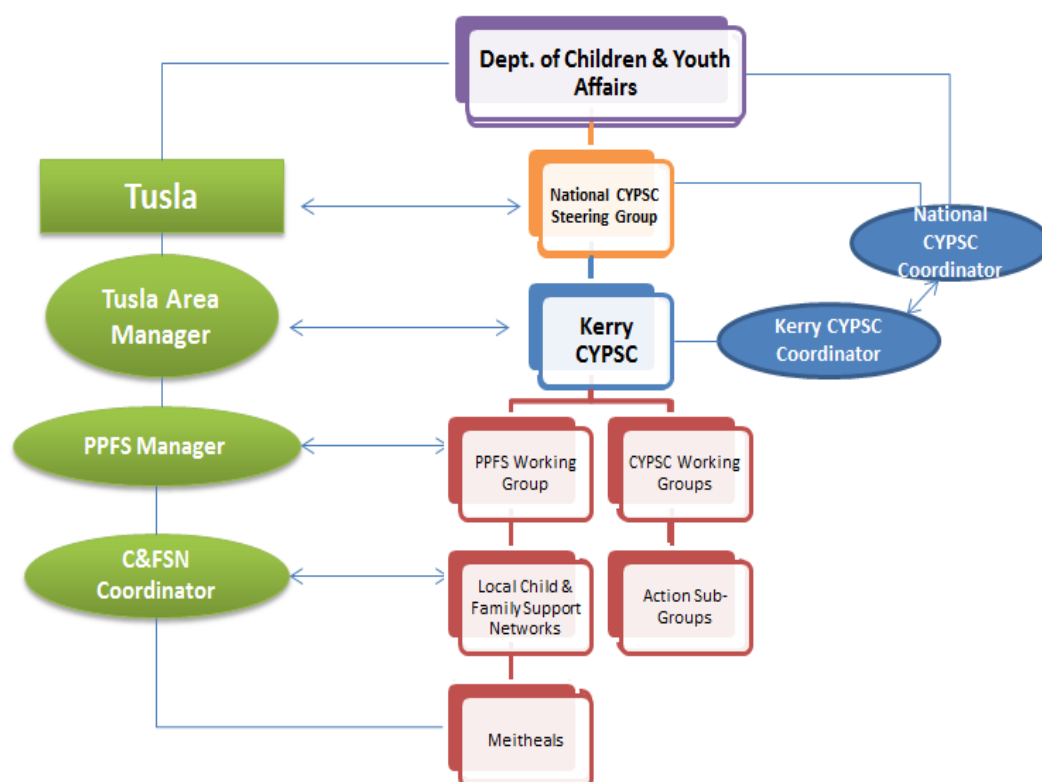
- Ensuring consistency between the priorities for children and young people set out in the *Better Outcomes Brighter Futures* Framework and the priorities and actions set out in the relevant Local Economic & Community Plan.

Kerry CYPSC links with & provides annual updates to the Kerry Local Community Development Committee (LCDC). Kerry LCDC liaises with & consults Kerry CYPSC regarding priorities & identified needs for children, young people & families in Kerry via Kerry CYPSC & its working groups or via member agencies directly as appropriate. The vice-chairperson of Kerry CYPSC represents Kerry County Council & Kerry LCDC on the committee ensuring good partnership working & information sharing.

Tusla Prevention, Partnership & Family Support (PPFS)

The Tusla PPFS programme is a national initiative which seeks to improve outcomes for children, young people & families through early intervention & prevention work. The PPFS programme has five main areas of work: Area Based & Meitheal Model; Parenting; Participation; Commissioning; and Public Awareness.

Kerry CYPSC & Tusla PPFS are strategically linked at county level. PPFS has been established as a working group of Kerry CYPSC & it is chaired by the Tusla Area Manager for Kerry. In this way the work of the PPFS working group is aligned with the Kerry CYPSC & its other working groups. The diagram below illustrates the connectivity between CYPSCs & Tusla Prevention, Partnership & Family Support.



Interagency Cooperation & Collaboration

Kerry CYPSC works closely with all statutory, community & voluntary agencies which provide services & supports to children, young people & families in the county in order to ensure better outcomes. Cooperation, collaboration & partnership working is embedded across all priority area working groups; Kerry CYPSC endeavours to work in partnership & participation with children, young people, parents & communities.

Kerry CYPSC & its partners are committed to strengthening & developing these interagency links & collaborative practice across all aspects of our work. This workplan was developed in partnership with all our stakeholders & we will continue to work with them to effectively implement it over the next 3 years.

Achievements to date

Kerry CYPSC has developed & implemented 2 three year Workplans to date: 2011-2014 and 2014-2017. Since 2010 Kerry CYPSC has completed the following initiatives.

<p>Child & Youth Mental Health</p>	<p>Referral Guidelines to Child & Youth Mental Health Services for GPs & Health Practitioners: A poster outlining the child & youth mental health services & supports available in Kerry from community based counselling services to specialist mental health services. The poster described the supports provided by the services; how to access each service; and the service contact details. A Parents Leaflet was also developed as part of this initiative.</p> <p>THINK –Teenage Health In Kerry Mental Health Booklet: A booklet for young people & their parents which provides information on youth mental health & issues which affect young people. It also provides information on the services & supports available when help is needed. This booklet was printed & distributed to every second level /Youthreach student in Kerry & is available to schools as required.</p> <p>Youth Mental Health & Well-Being Conferences 2013 & 2014: Youth Mental Health Conferences were organised in 2013 & 2014 in order to embed the key messages from the THINK Booklet and to highlight the importance of mental health & minding our mental health. Young people from all over the county together with representatives from youth mental health services & supports attended on the days: 513 delegates in 2013; 718 delegates in 2014. Conferences included key note speakers, workshops on issues relevant to positive mental health & well-being as well as information stands.</p> <p>Connected, Protected, Respected: A sub-group of the C&YMH working group prepared this report on Anti-Bullying approaches being used in a selection of National Schools in Kerry in order to highlight best practice & share the evidence based approaches being used in Kerry.</p> <p>Kerry Critical Incidents & Suicide Response Plan: This Youth CIRP /SRP was developed in 2014 in partnership with key stakeholders & endeavoured to ensure that an appropriate interagency response to critical incidents & youth suicide would be provided at local level when required. This work will now be undertaken as part of the work of <i>Connecting for Life Kerry</i>. A Cork Kerry model of response is currently being developed in order to ensure it is effective & appropriate & in line with national guidelines.</p> <p>Cultural Diversity: This initiative sought to promote inclusion in order to ensure that child & youth mental health services & supports are open & accessible to all children & young people, especially those most marginalised.</p> <p>Killarney Schools Mental Health & Well-Being Pilot Project: This pilot project was established in response to 16 youth tragedies aged 14-19 between 2010 & 2014 in Killarney. The secondary schools requested the support of CYPSC in the development of a collective approach in Killarney. The core objective of the project was to effectively support the mental health and well-being of all secondary school students in Killarney. In particular, the project was to identify and develop ways in which supports could be enhanced and strengthened for students with identified additional mental health needs. A Project Coordinator oversaw the implementation of a range of initiatives with the support of NEPS, Kerry CYPSC, South West Counselling Centre & the KDYS.</p> <p>Parent & Infant Mental Health: This initiative seeks to strengthen the skills & collaborative partnership working of front line practitioners working with</p>
-----------------------------------------------	---------------------------------------------------------------------------------------------------------------------------------------------------------------------------------------------------------------------------------------------------------------------------------------------------------------------------------------------------------------------------------------------------------------------------------------------------------------------------------------------------------------------------------------------------------------------------------------------------------------------------------------------------------------------------------------------------------------------------------------------------------------------------------------------------------------------------------------------------------------------------------------------------------------------------------------------------------------------------------------------------------------------------------------------------------------------------------------------------------------------------------------------------------------------------------------------------------------------------------------------------------------------------------------------------------------------------------------------------------------------------------------------------------------------------------------------------------------------------------------------------------------------------------------------------------------------------------------------------------------------------------------------------------------------------------------------------------------------------------------------------------------------------------------------------------------------------------------------------------------------------------------------------------------------------------------------------------------------------------------------------------------------------------------------------------------------------------------------------------------------------------------------------------------------------------------------------------------------------------------------------------------------------------------------------------------------------------------------------------------------------------------------------------------------------------------------------------------------------------------------------------------------------------------------------------------------------------------------------------------------------------------------------------------------------------------------------------------------------------------------------------------------------------------------------------------------------------------------------------------------------------------------------------------------------------------------------------------------------------------------------------------------------------------------------------------------------------------------------------------------------------------------------------------------------------------------------------------------------------------------------------------------------------------------------------------------------------------------------------------------------------------------------------------------------------------------------------------------------------------------------------------------------------------------------------------------------------------------------------------------------------------------------------------------------------------------------------------------------------------

	<p>mothers & babies 0-3 across all levels of services in Kerry. In 2016, 64 professionals from a range of disciplines including CAMHS, PHNs, Psychology, Counselling, Family Support, Social Work & KIDS services were trained in infant mental health. Following the training 2 professional Parent Infant Learning Networks were established in the county.</p>
<p>Drugs & Alcohol</p>	<p>Schools Notification Protocol: This is a simple notification protocol which supports improved communication between the Gardaí & secondary schools in the county. A Garda Liaison Officer has been nominated to be the primary point of contact between AGS & the school Principal. The notification protocol enables schools to share information on upcoming events such as Graduation Masses etc so that Gardaí are aware & can prepare for such events.</p> <p>THINK About Alcohol Booklet: This is an information booklet on alcohol for young people & their parents which provides information on alcohol & issues which affect young people. It also highlights the support services available when things go wrong. The booklet was distributed to every secondary & Youthreach student in Kerry.</p> <p>Community Alcohol Awareness: Following the publication of the THINK About Alcohol booklet members of the Kerry CYPSC Drugs & Alcohol working group together with representatives from the Gardaí organised a series of community awareness ‘pop up’ stands across the county. This was to raise awareness of the booklet & encourage a conversation on alcohol in the community & between parents & their young people.</p> <p>THINK About Alcohol Preventative Education Programme for Secondary Students: While schools welcomed the publication of the THINK About Alcohol Booklet many asked CYPSC to identify or develop a training programme which would embed the messages from the booklet. The preventative education programme was developed as a result. It is a very interactive, reflective, multi-media programme which explores a range of topics on alcohol & alcohol use including: the cultural context of alcohol in Ireland; the facts about alcohol; decision making & risks; harm reduction; and alcohol & addiction.</p>
<p>Children’s Disability Services</p>	<p>Kerry Intervention & Disability Services: Under the leadership of the HSE, Disability Services for Children in Kerry were reconfigured to ensure that children with disabilities have equitable access to services based on the needs of the child to appropriate supports via geographically based KIDS teams in line with <i>Progressing Children’s Disability Services</i>. 4 multi-disciplinary KIDS teams have been established in Kerry.</p>
<p>Parenting & Family Support</p>	<p>Parents Plus Early Years Facilitator Training for Hard to Reach Communities: This initiative was developed in order to improve the participation of marginalised communities in parenting support programmes in the county. 18 Parents Plus Early Years facilitators from Traveller & Migrant communities were trained to deliver the PPEY programme to members of their own communities. Facilitators are usually supported by PPEY facilitators from local FRCs or by PHNs.</p> <p>Language & Play Programme (L&P): The L&P programme is a series of six 1.5 hour workshops delivered to parents & children 0-3 in their communities via Parent & Toddler Groups. The play based programme focuses on fun ways to promote the parent child relationship and strengthen speech & language development as well as social, emotional & cognitive development in the</p>

	<p>early years. 45 L&P programmes were delivered to P&T groups in Kerry between 2014 and 2016.</p> <p>Non Violent Resistance (NVR) Training: NVR training for front line practitioners to help address child to parent violence in the home.</p>
<p>Children & Young people at Risk</p>	<p>Listowel Youth Resource Panel Pilot Project: This pilot initiative preceded the Tusla Prevention, Partnership & Family Support Area Based Meitheal Model & sought to develop an interagency early intervention & preventative approach to support young people at risk in the Listowel area.</p> <p>Prevention, Partnership & Family Support (PPFS): This is a national Tusla initiative which seeks to provide children, young people & families with the support they require in a timely, coordinated way. The focus of PPFS is early intervention & prevention and it engages interagency, community supports to identify & address needs earlier. A core value of the initiative is focusing on the strengths of the child & family and ensuring they are full participants in identifying the solutions which best meet their needs.</p> <p>The PPFS initiative in Kerry was established in 2015. The PPFS Manager & Child & Family Support Coordinator oversee the work. They engage with all relevant agencies, stakeholders & communities to ensure the model & approach are effectively implemented in Kerry. To date 108 front line practitioners have been trained as Lead Practitioners; 8 Child & Family Support Networks have been established; and Family Support Workers have been engaged in every FRCs in Kerry to support the delivery of Meitheals at local level. Meitheals are a collective, interagency family support intervention to support children, young people & families. The PPFS working group is a sub-committee of Kerry CYPSC & this ensures effective communication, information sharing & partnership working across all working groups.</p>
<p>Child & Youth Participation</p>	<p>Working Group Youth Participation Officers: Youth Participation Officers have been appointed in each working group in order to ensure that all child /youth projects & initiatives in Kerry CYPSC include the voice of children & young people. Thereby young people are consulted on the development of all booklets, conferences, education programmes etc undertaken as part of the work of Kerry CYPSC.</p> <p>#Connected & Protected: This initiative was developed in partnership with KDYS and Kerry Comhairle na nÓg & endeavoured to include the voice of young people via social media – Facebook, Twitter & Instagram.</p> <p>Listening to Children Through Play: Including the voice of younger children 0-12 in the work of Kerry CYPSC is a real challenge however through this project we endeavoured to listen to children through play so that we could include the voice of younger children in the development of our third workplan. 126 children participated in 10 workshops facilitated by play therapists. Workshops were organised with 0-4 year olds; 5-8 year olds; & 9-12 year olds in preschools & schools across the county in both urban & rural areas. Through the workshops children were ‘asked’: <i>How do children see what they need for their well-being? What do children wish for in their lives? What makes them feel valued?</i> The findings from the project have helped inform the development of this workplan. They told us: They need family & home. They wish for outdoor spaces, friends, pets /animals, movies and community safety. They feel valued when they are listened to, asked questions & really seen; spend quality time with family; and have good friends.</p> <p>Youth as Peer Researchers Project: 64 young people were trained by NUIG in</p>

	<p>research methodology so they could undertake peer research on topics which are important to them. Group projects included topics such as: The safety of the HIV Vaccine; Sports & Mental Health; The impact of not being chosen to participate on sports teams; Youth & gambling; and the pressure to perform in exams. Their findings were shared with Kerry CYPSC via the Youth as peer Researchers Seminar in March 2017.</p> <p>Kerry Comhairle na nÓg: Kerry CYPSC is very committed to working with & supporting Kerry Comhairle na nÓg which is managed by KDYS. The Comhairle is consulted on the development of all actions which impact on young people i.e. conferences, booklets, and campaigns. Comhairle members engage with the Youth Participation Working Group & provide regular updates & insight to inform the work of Kerry CYPSC. The Kerry CYPSC Coordinator is a member of the Comhairle na nÓg Steering Group and regularly attends Comhairle events & its AGM.</p>
<p>Change Management</p>	<p>Strategic Data Gathering & Needs Analysis: In order to ensure the work of Kerry CYPSC is informed by up to date & relevant data the committee has published 2 significant data reports:</p> <ul style="list-style-type: none"> • The Kerry CYPSC Child Well-Being Indicator Data Report 2012 (IT Tralee) • The Kerry CYPSC Evidence Baseline Report, 2017 (AIRO, NUIM) <p>These reports provide up to date data sets on children, young people & families in Kerry in line with the 5 national outcomes. The reports also provide a socio-demographic profile of Kerry. Data is based on national & local verified data sets from CSO, HSE, Pobal, Court Services, National Educational Welfare Service, Tusla, Government Departments, NSRF, Gardaí and the Health Research Board. The reports have helped to inform the needs analysis & identification of priority action areas & work of Kerry CYPSC.</p> <p>Collaborative Interagency Partnership Working: Since its inception Kerry CYPSC has enjoyed the commitment & support of all its partners. Kerry CYPSC organised the <i>Collaborative Interagency Skills Development Programme</i> with the support of the IT Tralee in 2013/14 in order to embed strategic partnership working across Kerry CYPSC & all working groups. This has enabled collaborative, interagency, partnership working to go from strength to strength in Kerry. However, Kerry CYPSC is aware that it is a real challenge for community organisations to participate on all working groups & action areas.</p> <p>Kerry CYPSC Website www.kerrychildrensservices.com : The website was developed in 2012 & is currently being reconfigured.</p>

Challenges & Learning

There is a strong foundation for interagency work in county Kerry & Kerry CYPSC has established excellent working relationships at all levels of working from CYPSC to working groups & individual projects & initiatives. We strive to continue to build these positive collaborative working relationships however this takes ongoing work & commitment. We recognise the importance of ensuring a balance between the strategic focus of the work of Kerry CYPSC & developing local projects & pilots which respond to identified need. Some of the challenges & learning from our work includes:

- The ability of community organisations such as youth services & FRCs to commit & participate fully to the broad range & number of working groups & project initiatives of the committee in addition to their work can be a real challenge.
- Working creatively to address gaps in service provision is a challenge. Kerry CYPSC is not a service provider & while creative pilot projects have been developed to address some deficits there remain 2 challenges (a) mainstreaming successful initiatives and (b) supporting resourcing challenges of service providers to address waiting lists i.e. CAMHS, KIDS etc. Kerry CYPSC has no remit in terms of providing resources but it will continue to work with service providers to creatively support children, young people & families who are experiencing difficulties.
- Kerry CYPSC is well placed to identify gaps in service provision at county level. Harnessing the strategic advocacy role of the committee to ensure identified gaps & resourcing issues are highlighted & acted upon at appropriate national & regional levels will be a more significant focus of Kerry CYPSC going forward.
- Sharing the learning from projects & initiatives: Kerry CYPSC has successfully undertaken a broad range of initiatives since its inception in 2010. An increased focus of the work will be to document the learning effectively & share it broadly i.e. ensure the learning is shared widely across the county & beyond. This work will be supported by the reconfiguration of our Kerry CYPSC website but will also include sharing the learning regionally & nationally via regional & national support & reporting structures & networks.
- Engaging parents: Kerry CYPSC recognises the importance of engaging parents & ensuring their voices are included in our work. However, engaging parents remains a real challenge & will require the ongoing commitment of the committee, its working groups & all strategic partners.



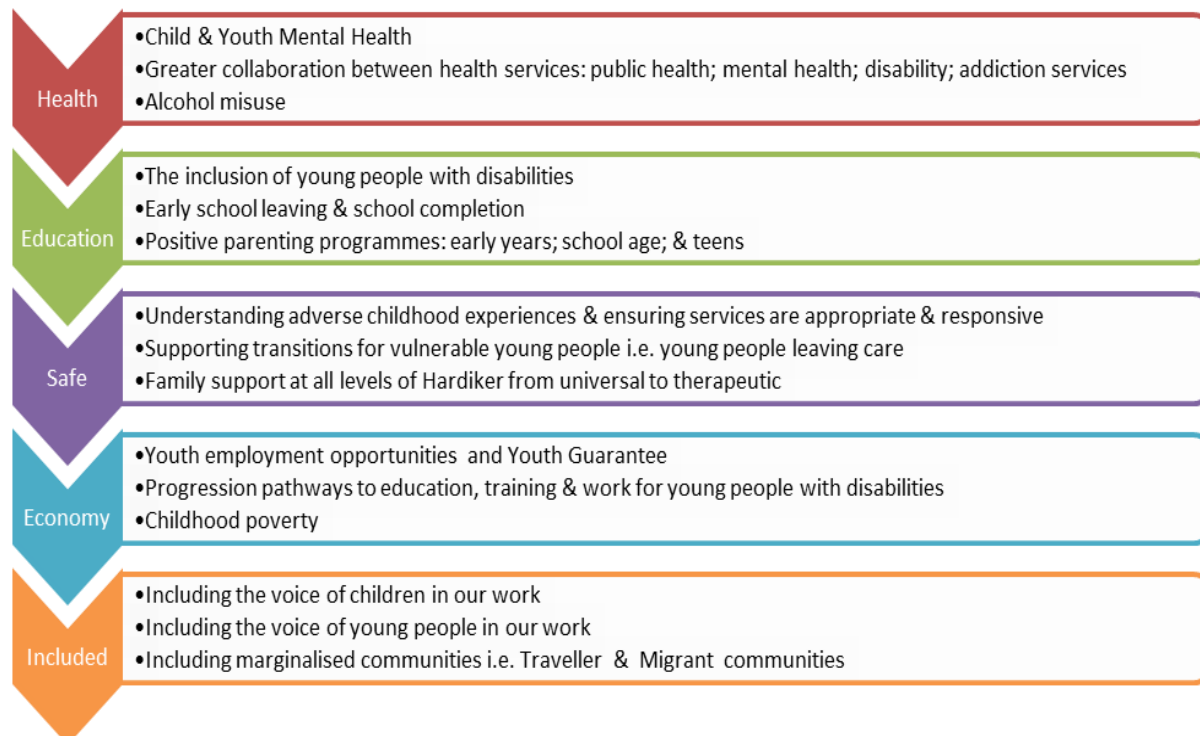
How the Children and Young People's Plan was developed

The development of this workplan took several months from June 2017 to June 2018 and included the following elements:

- A review of the Kerry CYPSC Workplan 2014-2017.
- A review of services in Kerry across all priority action areas.
- The Kerry CYPSC Baseline Report (AIRO, 2017) which provides a socio-demographic profile of the county across all outcome areas.
- A consultation with children & young people: *Listening to Children Through Play 0-12*; and a consultation with young people 12-24 in partnership with Kerry ETB.
- An online parental survey to include the views of parents in partnership with KDYS.
- An online stakeholder survey to include the views of all strategic partners.
- 2 facilitated workplan development days to identify local priorities & establish key objectives for the committee going forward.
- Kerry CYPSC & each working group then reviewed the information gathered to ensure appropriate analysis of same. Following this process they developed their strategic action plans which they have committed to implementing over the course of the 3 year life span of the plan.

What Stakeholders Told Us

In September 2017 all members of Kerry CYPSC & its working groups were invited to participate in a Stakeholder Survey in order to elicit their views on what they believe are the most significant issues for children & young people in Kerry across the five national outcomes. The following diagram summarises their views & ranks their priorities for the work of Kerry CYPSC going forward:



What Parents Told Us

From June to October 2017 the Kerry Diocesan Youth Service (KDYS) undertook a parental participation project on behalf of Prevention Partnership & Family Support & Kerry CYPSC. Four focus groups were organised with parents in the community in Tralee, Killarney, Listowel & Cahersiveen as well as an online / social media survey for parents via the KDYS website & smart phone & 168 parents participated. In the opinion of the parents & guardians surveyed the following issues emerged as most significant for children & young people. The table below highlights the opinions of parents across all ages & stages of child & youth development in Kerry.

Age of Child or Young Person	No. 1	No. 2	No. 3
0-3 years	Anxiety & stress	Bullying	Internet safety
4-8 Years	Anxiety & stress	Internet Safety	Bullying
9-11 Years	Anxiety & stress	Internet Safety	Participation & Inclusion in society
12-18 Years	Anxiety & stress	Internet Safety	Ways to socialise without alcohol
19-24 years	Anxiety & stress	Alcohol misuse	Depression

What Young People Told Us

From July 2017 to January 2018 a consultation with young people in Kerry was undertaken on behalf of Kerry ETB & Kerry CYPSC. Focus groups were organised in the 8 C&FSN areas: Tralee, Listowel, Killarney, Dingle, Kenmare, Cahersiveen, Castleisland and Killorglin. Consultations were undertaken via focus groups with students in school as well as via focus groups with marginalised young people in youth projects such as KDYS YouthReach, KDYS NYP etc. In addition, focus groups were held with stakeholder agencies in each local area. A total of 151 young people participated in the consultation process. The importance of friendships, feeling connected & valued & being able to hang out with friends was highlighted throughout. There were recurring issues which emerged for young people across the county which included the following:

Youth Spaces	Youth Employment	Transport	Included & Valued	Youth Services
Dedicated multi-purpose youth spaces where young people feel they can hang out with friends.	Poor employment prospects in many areas. No faith they'll ever have financial security.	Transport is a real issue in most areas.	Many young people feel irrelevant & disconnected from the 'adult world'. They would like to be taken seriously.	A recurring theme was the lack of information available for young people on services for young people.
A range of youth activities especially for youth aged 14+.	The need for supports to access employment i.e. CV preparation & courses such as manual handling, safe pass etc.	Youth are dependent on parents for transport & feel disconnected.	Many young people do not feel valued in or connected to their communities.	More counselling services for young people including school based counselling.
The only place to go is the pub. Alcohol & drugs are a big concern for young people.	The cost of education /training is prohibitive; courses cost much less if you are under 18.		Peer pressure & pressure to conform especially re alcohol	Local services for alcohol & drugs.
Traveller Issues	Some female Traveller young people expressed concern re challenges both internal & external to their community & culture including: <ul style="list-style-type: none"> • Fear of 'the grab' & early marriage • Discrimination by both Travellers & the settled community • Having choices in education & beyond. 			

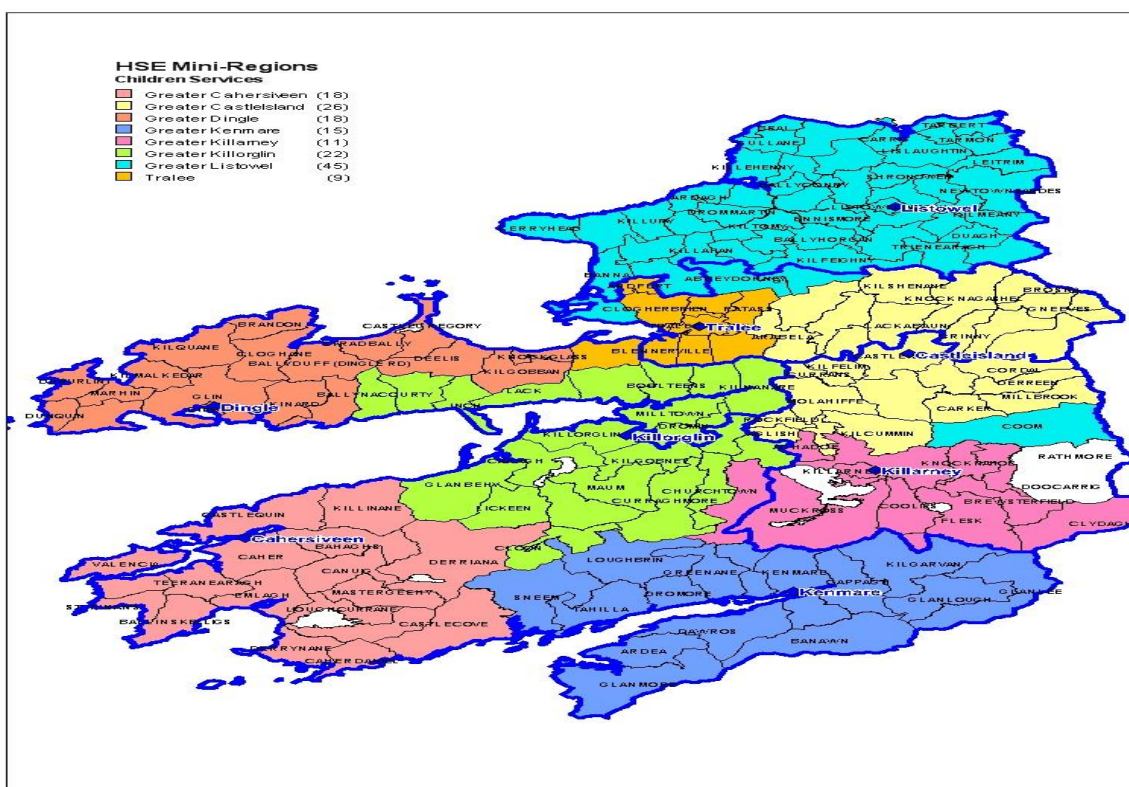
Section 2: Socio-Demographic Profile of Kerry

County Kerry is situated in the south west of Ireland in the province of Munster. It is the fifth largest county in Ireland and covers a total area of 1,815 square miles. The population in Kerry is widely dispersed with urban centres experiencing population growth: Killarney CFSN + 7.1%; Kenmare CFSN + 5%; & Killorglin CFSN + 2.8% however many areas have experienced population decline, most notable in the Cahersiveen CFSN area of -2.8%. This presents many challenges regarding the provision of accessible, equitable services to children, young people and families in Kerry.

The 2016 Pobal HP Deprivation Index shows the level of overall affluence and deprivation at the level of 18,488 Small Areas (SAs) in 2016 in Ireland. Based on the Relative Index Scores for 2016, the Kerry area as a whole is the sixteenth most affluent local authority in the country with a score of -1.3 (marginally below average). Within Kerry there is a distinct distribution of the 2016 Relative Index Scores with the most affluent areas adjacent to Killarney, Tralee and in Sneem classed within the 'Affluent' (4.3% of SAs) group. The most disadvantaged SAs are predominantly either in rural areas such as Cahersiveen and the Iveragh Peninsula or in the main urban centres of Listowel and Tralee. The 10 SAs (1.4% of all SAs) with the lowest scores and classed as 'Very Disadvantaged' are all located in the town centres of Killarney, Tralee and Listowel. The most disadvantaged SAs in Kerry are Tralee Urban x 3 SAs (-21.6 to -25.1); Listowel Urban x 2 SAs (-22 to -24.8); Tralee Rural x 3 SAs (-20.2 to -24); Killarney Urban (-21.8) and Castleisland (-21.9). In total, there is a population of 6,265 residing in the 30 SAs with the lowest scores. This accounts for 4.2% of the total population in Kerry. Of the total population residing in these areas, 29.2% (or 1,831) were aged less than 24 years.

There are three main towns in County Kerry: Tralee (total Pop. 23,691), Killarney (total Pop. 14,504) and Listowel (total Pop. 4,820). Tralee is the county town and administrative centre. There are a further 5 large towns: Ballybunion, Cahersiveen, Castleisland, Dingle, Kenmare & Killorglin. 36.95% of the population resides in the main towns of the county. There are two Gaeltacht areas in county Kerry: Gaeltacht Chorca Dhuibhne situated on the Dingle Peninsula; and Gaeltacht Uíbh Ráithaigh which is situated on the Iveragh Peninsula.

The age structure or demographic profile of a population is influenced directly by patterns of natural increase (especially the role of fertility) and migration. The structure of the population is not evenly distributed throughout the county in Kerry. While Kerry has a similar age structure when compared to the State; there are some differences between Kerry and the State with Kerry having a smaller proportion of the population within the younger age-cohorts (0 to 4, 5 to 9 etc). In the centre of the population pyramid, there is a lower proportion younger working age cohorts (30 to 34, 35 to 39 etc) in Kerry when compared to the State. At the higher end of the population pyramid Kerry has a larger proportional share of its population within the elderly age cohorts (70+).



According to the Census of 2016, there were 147,707 people residing in Kerry in April 2016. This represents an overall population growth of 1.5% or 2,205 which is significantly lower than that of the state which recorded a growth of 3.8%. Variations are evident when examining the distribution of the population growth across the CFSNs. The highest growth was in the Killarney CFSN at 7.1% and followed by Kenmare (5%). Both these growth rates exceeded the national average and were higher than the other CFSNs including Killorglin (2.8%) and Dingle (0.7%). There was a decline in population of the CFSNs of Tralee (-0.4%), Castleisland (-0.5%) and Listowel (-0.5%).

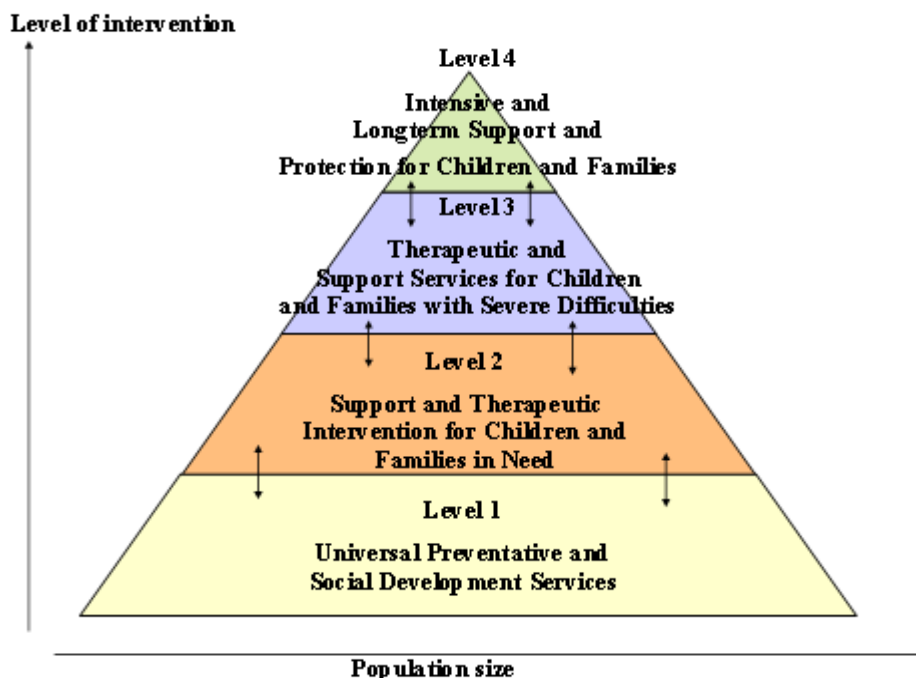
Indicator	Measure
Child and youth population	There were 44,612 children and young people aged 0-24 residing in Kerry in April 2016 which represents 30.2% of the population. This is below the state average of 33.2% & the second lowest proportion of children & young people 0-24 in all LA areas in Ireland.
Child population	There were 34,527 children & young people aged 0-17 residing in Kerry. This proportion was lower than the State average of 25%, Relative to all other LAs, Kerry had the fifth lowest proportion of children and young people aged 17 and under in the State
Young adult population	The number of young people aged 18 – 24 in Kerry was 10,085 which represents 6.8% of the total population in Kerry. This is lower than the state average of 8.2%. Variations are evident when examining the distribution of those aged 18 to 24 years across the CFSNs. The Tralee CFSN recorded the highest rate by far of 8.9% (or 2,892). This rate was far higher than the other CFSNs due to the location of the Tralee Institute of Technology. Lower rates were recorded in the others CFSNs; Dingle (6.8% or 699), Killarney (6.4% or 1,832), Listowel (6.3% or 1,970), Castleisland (6.2% or 941), Cahersiveen (5.7% or 388) and Kenmare (5.5% or 427).
Infant mortality	According to the CSO, an infant death is defined as the death of an

	<p>infant aged less than one year. The infant mortality rate is calculated as the number of infant deaths per 1,000 births. In 2016, 7 infant deaths occurred in Kerry and this represents an infant mortality rate of 4.0 per 1,000 births. This rate was higher than the State average of 3.3 & the South Western region of 2.4.</p>
Children & young people with an intellectual disability	<p>In 2016, there were 342 children and young people registered with an intellectual disability in Kerry. Of this number, 1.8% (6) were aged 0 to 4 years, 25.1% (86) were aged 5 to 9 years, 39.2% (134) were aged 10 to 14 years and 33.9% (116) were aged 15 to 19 years. In comparison to the State figures, Kerry had a higher representation in the 10 to 14 age group and a lower representation in the youngest age group of 0 to 4 years.</p>
Children & Young People registered with a physical disability	<p>In 2016, there were 132 children and young people registered with a physical disability in Kerry. Of this number, none were aged 0 to 4 years or 5 to 9 years, 18.9% (25) were aged 10 to 14 years and 81.1% (107) were aged 15 to 19 years.</p>
Ethnicity	<p>The breakdown of children and young people into ethnic groups in Kerry is as follows: 'White Irish Traveller' (1.1% or 483), 'Other White Background' (7% or 3,685), 'Black or Black Irish' (1% or 448), 'Asian or Asian Irish' (1.4% or 648), 'Other' background (1.2% or 531) and 'Not Stated' (1.4% or 621).</p>
Lone Parent Families with children < 15 years	<p>According to Census 2016, the total 'Lone Parent' families residing in Kerry was 6,468. This represented 24.9% of the families. Lone mothers accounted for 21.2% (5,500) and lone fathers 3.8% (968).</p>
Educational Attainment of Mothers	<p>In 2011, there were 1,217 children with mothers with low levels of education in Kerry. This number equates to approximately 4.2% of all children living in Kerry and is the fourteenth lowest rate in the country.</p> <p>When all levels of education attainment are examined, it is evident that the proportion of children with mothers with third level education in Kerry (36.9%) is above the State rate (36.7%) and below the South- Western regional average (37.8%).</p>
Traveller children and young people	<p>There were 483 'White Irish Traveller' children & young people in Kerry aged 0-24 or 1.1% of the child & youth population in April 2016.</p>
Children in Care	<p>In March 2017, there were 155 children and young people in the care of Tusla in Kerry. This equates to a rate of 4.4 per 1,000 children and young people aged less than 18 years. This rate was lower than the State rate of 5.5 and relative to all other ISAs was the fifth lowest rate in the country.</p>

The full Kerry CYPSC Evidence Baseline Data Report (2017, AIRO) can be downloaded from www.kerrychildrensservices.com or by contacting the Coordinator, Claire O'Toole.

Section 3: Overview of Services to Children and Families in Kerry

Hardiker Model



Organisation / Agency	Service	Statutory or Voluntary	Universal or Targeted or Both
Health			
HSE Primary Care	There are 18 Health Centres providing public GP, PHN, Medical Card, GP Visit Card, Child Health, Community Work & Older Persons Health services in Kerry. Services also include community speech & language, occupational therapy, dieticians, physiotherapy etc at community level.	Statutory	Universal
HSE Public Health Nursing	PHNs in Kerry provide a vast range of community level services for children, young people & families in Kerry. PHNs visit all babies within 72 hours of hospital discharge, provide screening & vaccination clinics, provide support & advice on all aspects of children's needs.	Statutory	Universal
HSE Community Parents	Community parents provide evidence based supports & are available to all first & second time mothers in Kerry.	Statutory	Universal & targeted
Kerry University Hospital	A large acute hospital serving the populations of Kerry as well as parts of North Cork & west Limerick	Statutory	Universal & targeted
Kerry Intervention & Disability Services (KIDS)	There are 4 multi-disciplinary children's disability teams serving county Kerry.	Statutory	Targeted
HSE Disability Services	The HSE funds agencies in Kerry to provide a range of services to support young people who are 18 yrs	Statutory	Targeted

	+, with a disability including, a physical & sensory disability, a moderate-severe intellectual disability, Autism or an Acquired Brain Injury.		
HSE Child Adolescent & Family Psychology Service	The service provides psychological assessment and intervention for children who present with moderate to severe social, emotional and behavioural difficulties which significantly impact on everyday functioning and impair the child and families well-being.	Statutory	Targeted
HSE CAMHS	CAMHS is a specialist tertiary mental health service for children with the most severe disabling mental health disorders such as ADHD, eating disorders, depressive disorders and psychotic disorders.	Statutory	Targeted
HSE Mental Health Services	A mental health care service for young people (17+) and adults with mental health disorders. Disorders include ADHD, eating disorders, depressive disorders and psychotic disorders.	Statutory	Targeted
HSE Counselling in Primary Care	Counselling in Primary Care (CIPC) is a short-term counselling service that provides up to 8 counselling sessions with a professionally qualified and accredited Counsellor/Therapist.	Statutory	Targeted
Counselling Services	There are 2 counselling services in Kerry – Kerry Adolescent Counselling & South West Counselling which provide a safe space for children & young people to explore issues and provide support with a range of mental health concerns.	Community & Voluntary (Funded Services)	Targeted
Jigsaw Kerry	Jigsaw Kerry is for young people aged 12-25 years and provides brief, solution focused intervention lasting up to 6 sessions.	Community & Voluntary (Funded Services)	Targeted
Pieta House	Pieta House provides free, therapeutic supports to people who have suicidal ideation, who have attempted suicide and those who engage in self-harm. Pieta House also provides counselling supports to those bereaved by suicide.	Community & Voluntary (Funded Services)	Targeted
HSE Drugs & Alcohol Services	HSE Addiction Services support the provision of an integrated range of preventative, therapeutic and rehabilitation services.	Statutory	Targeted
Southern Regional Drugs & Alcohol Task Force	The Southern Regional Drug & Alcohol Task Force was established in 2003 to address issues relating to substance misuse in the Cork Kerry region. 3 Community Based D&A Services are supported in Tralee (NEWKD), Killarney & Listowel (KDYS).	Community & Voluntary (Funded Services)	Targeted
HSE Dental Service	Dental services, including emergency services for children aged 16 years & under.	Statutory	Targeted
Kerry Traveller Health CDP	Kerry Traveller Health & CDP works with the Traveller community to promote & improve Traveller health in Kerry.	Community & Voluntary (Funded Services)	Targeted
Education			
Education	Early Years Care & Education: There are 136 childcare providers in Kerry providing a range of early years care & education opportunities & after school services. There were 5237 free preschool places in Kerry in 015/16.	Private and Community & Voluntary	Universal
	Primary Schools: 134 Primary Schools including 22 DEIS schools.	Statutory	Universal
	Secondary Schools: 26 Secondary Schools including 5 DEIS Secondary Schools.	Statutory	Universal
	Special Schools: 3 Special Schools in Listowel, Tralee & Beaufort	Statutory	Targeted
	IT Tralee provides a range of third level education opportunities to students at both degree & masters level.	Statutory	Universal

National Educational Welfare Service	The NEPS service is a school based educational psychological service for children and adolescents aged 5-18 years. NEPS supports Developmental, Learning, Social, Emotional and Behavioural difficulties which impact a pupil's learning and socialisation in school.	Statutory	Targeted
Kerry Education & Training Board	8 secondary & 1 Primary ETB Schools	Statutory	Universal
	2 Colleges of Further Education & a Community Training Centre in Kerry.	Statutory	Universal & Targeted
	10 Adult Education Centres offering a range of education, training, apprenticeship & further education opportunities.	Statutory	Universal & Targeted
	Kerry ETB YouthReach, second chance education initiative serving Killorglin & Cahersiveen.	Statutory	Targeted
Kerry Diocesan Youth Service (KDYS)	YouthReach Centres x 4 based in Tralee, Listowel & Killarney which provide second chance education to young people aged c. 16-21.	Community & Voluntary (Funded Services)	Targeted
	5 KDYS Youth Centres in Tralee, Killarney, Listowel, Castleisland & Killorglin.	Community & Voluntary (Funded Services)	Universal & Targeted
	40 Youth Clubs & x 5 Youth Cafes	Community & Voluntary	Universal
	Youth Justice: The KDYS provides the Kerry Empowering Youth Service which is a Kerry Garda Youth Justice Divisional model in Kerry which covers the county.	Community & Voluntary (Funded Services)	Targeted
	SPY: 4 Special Projects for Youth in Kerry in Tralee, Killarney, Listowel & Castleisland. Youth Information service is also provided in Tralee Killarney & outreach. The KDYS also provides a youth training & mentorship programme.	Community & Voluntary (Funded Services)	Targeted
Kerry County Childcare Committee (KCCC)	KCCC coordinates & supports the provision of quality, accessible & inclusive childcare throughout the county.	Community & Voluntary	Universal
	KCCC administers the ECCE, CETS & CCS programmes which provide grants to providers to enable children & parents to access subsidised childcare.	Community & Voluntary	Universal
	KCCC administers the P&T grant scheme for local P&T groups.	Community & Voluntary	Universal
	KCCC provides training to the childcare sector including Children First, AIM, Aistear & Síolta to ensure quality provision.	Community & Voluntary	Universal
National Learning Network	Training courses and support services for people 18 years+ who need specialist support (job seekers, unemployed, people with an illness or disability) in Tralee.	Community & Voluntary	Targeted
Local Development Partnership Companies	There are two Local Development Companies in Kerry implementing the SICAP Programme: North, East & West Kerry Development (NEWKD) and South Kerry Development Partnership (SKDP). They provide a range of social, community, enterprise & employment supports via State & EU Funding Programmes.	Community & Voluntary	Targeted
Kerry County Council	Library Service: 9 libraries throughout the county plus a mobile library service which serves 97 local communities.	Statutory	Universal
Tusla Educational Welfare Service	3 Education Welfare Officers in Kerry (June 2018) to ensure & promote school attendance, participation & retention.	Statutory	Targeted

Safe & Protected From Harm			
Tusla	Prevention, Partnership & Family Support provides early intervention family support at community level through a collective, interagency approach known as Meitheals.	Statutory	Targeted (2)
	Child Protection & Welfare: The Duty Social Work Team assesses CP&W referrals, refer to SW Teams & provide advice on CP&W concerns. 2 Social Work Teams provide support to children in care in North Kerry & South Kerry. A Child Protection Conference service is available to assess & plan for children who may be at risk of significant harm. A Family Welfare Conference service is available to support families to make decisions in the best interest of the child.		Targeted (3 & 4)
	Tusla Aftercare service provides supports to young people leaving care.		Targeted
	Le Cheile Family Support provides high level family support for families referred via Social Work.		Targeted (3)
Family Resource Centres	There are 12 Tusla FRCs in Kerry located in Tralee (x2), Killarney, Listowel, Abbeydorney, Ballyduff, Cahersiveen, Castlemaine, Duagh, Kerryhead /Ballyheigue, Killorglin, Kenmare. There are an additional 2 FRCs located in Castleisland & Dingle.	Community & Voluntary	Universal & Targeted
KDYS Springboard Family Support	This is a family support initiative funded by Tusla which provides a coordinated, integrated response to the needs of children & families in the Tralee area.	Community & Voluntary	Targeted
KDYS Killorglin NYP	Killorglin NYP supports young people aged 12-18 & their families through a range of youth & family support interventions /programmes.	Community & Voluntary	Targeted
Adapt Kerry Women's Refuge	Adapt Kerry Women's Refuge & Support Service provides refuge accommodation & outreach supports for women experiencing domestic violence.	Community & Voluntary	Targeted
Economic Security & Opportunity			
Dept. of Employment Affairs & Social Protection (DEASP)	There are 5 Intreo Offices in Kerry located in Tralee, Killarney, Listowel, Cahersiveen & Kenmare which provide a single point of contact for all income & employment supports. There are 2 Social Welfare Offices in Killorglin & Dingle.	Statutory	Targeted
Local Employment Service	NEWKD & SKDP (Local Development Partnership Companies) Local Employment Services provides information, guidance and job-searching support as well as training and educational opportunities.	Community & Voluntary (Funded Services)	Targeted
Employability Kerry	This is an employment and recruitment service funded by the DEASP to assist people, who have a range of disabilities and impairments, to obtain and keep a job.		Targeted
Kerry County Council	KCC provides a Housing Service which facilitates the provision of housing for those in need. KCC is responsible for planning, economic development, roads, water & environmental services.		
Connected, Respected & Contributing			
KDYS	As noted above the KDYS supports 40 youth clubs & 5 youth cafes in Kerry which supports the participation of in excess of 6000 young people across the county.	Community & voluntary	Universal
International Resource Centres	There are 2 international resource centres in Kerry: KASI in Killarney & TIRC in Tralee which provide information, advice & support to asylum seekers & migrants in Kerry.	Community & voluntary	Targeted
Kerry ETB Youth Officer	The Youth Officer administers DCYA grants to youth clubs & organisations in Kerry & supports the coordination of youth work provision in the county.	Statutory	Universal & Targeted

Section 4: Local Needs Analysis in Kerry

Outcome 1: Active & Healthy both Mentally & Physically

How are Children & Young People in Kerry Doing?

- Most children & young people in Kerry are doing well. The number of births to mothers aged 10-17 in Kerry & Clare is 1.2 per 10,000. Percentages for ante-natal care, breastfeeding & immunisations are high. PHNs visit all new babies within 72 hours in Kerry.
- There were 342 children registered with an intellectual disability & 132 children registered with a physical disability in Kerry in 2016
- Rates of Self Harm in men less than 24 presenting to hospital is above the state average at 203.5 per 100,000; and for women 194.9 per 100,000.
- In Kerry persons under 18yrs seeking treatment for substance misuse is 14 per 10,000 which is more than double the state average of 6.8

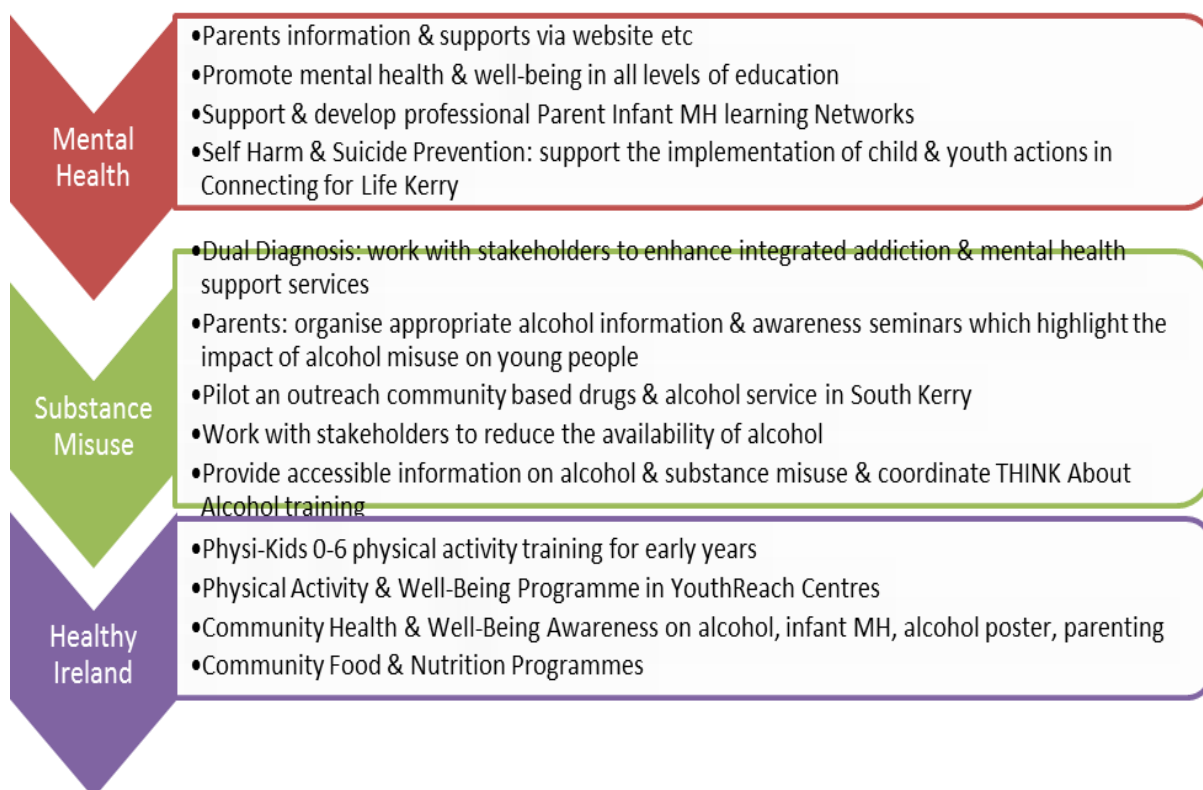
What did the Consultations Tell Us?

- For parents: anxiety & stress is a significant issue for children & young people across all age groups. Parents also reported concerns re alcohol misuse; internet safety & bullying.
- For stakeholders: child & youth mental health; alcohol misuse; and greater collaboration across all public health, mental health, disability & addiction services is required.
- For children & young people accessing services & supports outside of the main towns of Tralee & Killarney is a challenge.

Are there sufficient Services in this Outcome Area?

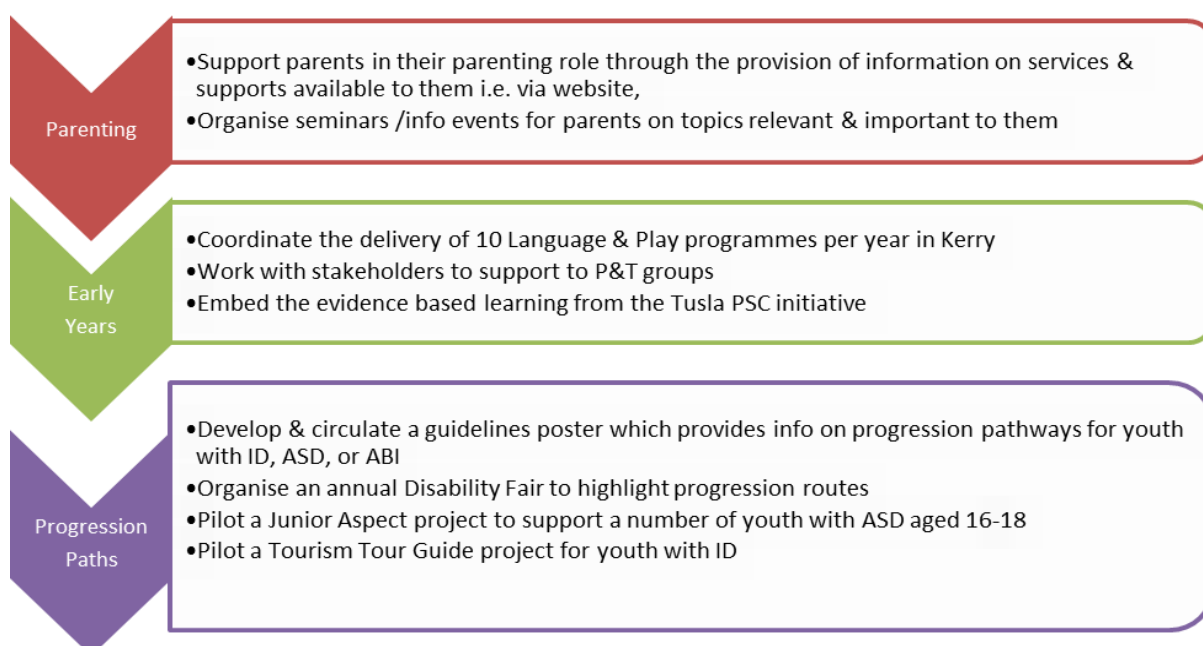
- Resourcing of services to meet identified need is a significant challenge for many services in Kerry including Disability, Mental Health, PHN & Addiction.
- Waiting lists: In 2016 570 children referred to CAMHS were not admitted to the service in the CHO 4 area.

Health & Well-Being Priorities for Kerry CYPSC



Outcome 2: Achieving in All Areas of Learning & Development	
How are Children & Young People in Kerry Doing?	<ul style="list-style-type: none"> In 2015/16 there were 5,237 childcare places (0-4) in Kerry, a rate of 580.6 per 1000 children which is the 4th highest in the country. Primary school absenteeism in Kerry is above the state average & increased from 9.1% in 2010/11 to 11.1% in 2014/15. Junior cert retention rates in Kerry remain stable at 96%-97.1% which is in line with or marginally below the State average. In 2009 1,974 students entered second level in Kerry. By 2014/15 1816 students had completed their leaving certs which equates to a retention rate of 92% above the state average of 90.2%. in 2016 1,855 students sat the leaving cert; 82.8% or 1,536 progressed to third level which is above the state average of 77.8
What did the Consultations Tell Us?	<p>Stakeholders told us that Kerry CYPSC should prioritise</p> <ul style="list-style-type: none"> The inclusion of children with disabilities & or additional needs. Early school leaving & school completion and second chance education. Positive parenting programmes for all stages of child development. <p>Parents would like us to prioritise Internet Safety, Inclusion & Bullying.</p> <p>Children & Young People would like us to prioritise: increased access to counsellors in schools; increased access to TY & link TY to QQI levels 3 & 4. Improved intercultural awareness & supports.</p>
Are there sufficient Services in this Outcome Area?	<p>There are 138 Primary Schools, 26 Secondary Schools and 3 Special Schools in Kerry. There are x schools at primary level & x schools at second level providing special classrooms including ASD classrooms.</p> <ul style="list-style-type: none"> Disability services require additional resources to meet current & future needs. Progression routes from second level to further education, training & employment for children with disabilities are limited. Early school leaving among Travellers remains a concern. English language is a barrier in education for many Migrant young people. Therapeutic parenting supports for parents parenting in difficult circumstances are not currently available.

Learning & Development Priorities for Kerry CYPSC



Outcome 3: Safe & Protected From Harm

How are Children & Young People in Kerry Doing?

- In 2016 there were 137 applications granted for domestic violence barring orders in Kerry, a rate of 38.6 per 10,000 this rate is significantly lower than the state average of 69.6 per 10,000.
- In 2015, 298 young people under 18 were referred to the Garda Youth Diversion scheme in Kerry which is just above the state average.
- In 2016, there were 1,157 referrals to Tusla in the Kerry ISA. Of the total referrals for child abuse in 2016 in the Kerry ISA, 39.2% or 213 referrals were for emotional abuse; this rate was higher than the State average of 36%. Other types of referrals in the Kerry ISA were for neglect (33.5% or 182), physical abuse (16.4% or 89) and sexual abuse (11% or 60).
- In March there were 155 children and young people in the care of Tusla in Kerry.
- As of 2016, there were 75 children and young people aged 24 years and under resident in direct provision centres in Kerry. Of the 75 children and young people residing within the direct provision centres, 26.7% (20) were aged 0 to 4 years, 25.3% (19) were aged 5 to 12 years, 1.3% (1) was aged 13 to 17 years and 46.7% (35) were aged 18 to 24 years.

What did the Consultations Tell Us?

- Stakeholders told us that Kerry CYPSC should prioritise the following:
- Support transitions for vulnerable young people i.e. young people leaving care.
 - Therapeutic supports for victims of abuse & crime i.e. play therapy, counselling etc.
 - Support parents in their parenting role via Meitheals
 - Family support for parents parenting in difficult circumstances
 - Family support at community level.

Are there sufficient Services in this Outcome Area?

While there is a broad range of family support services in Kerry from Hardiker level 1 to 4 the provision of more specialist therapeutic interventions earlier. Additional professional development & training is required to enhance community based family support services. Greater collaboration across all sectors & services to enhance the delivery of Meitheals locally. Rural isolation & rural disadvantage are recurring themes in Kerry; the development of support services needs to reflect this.

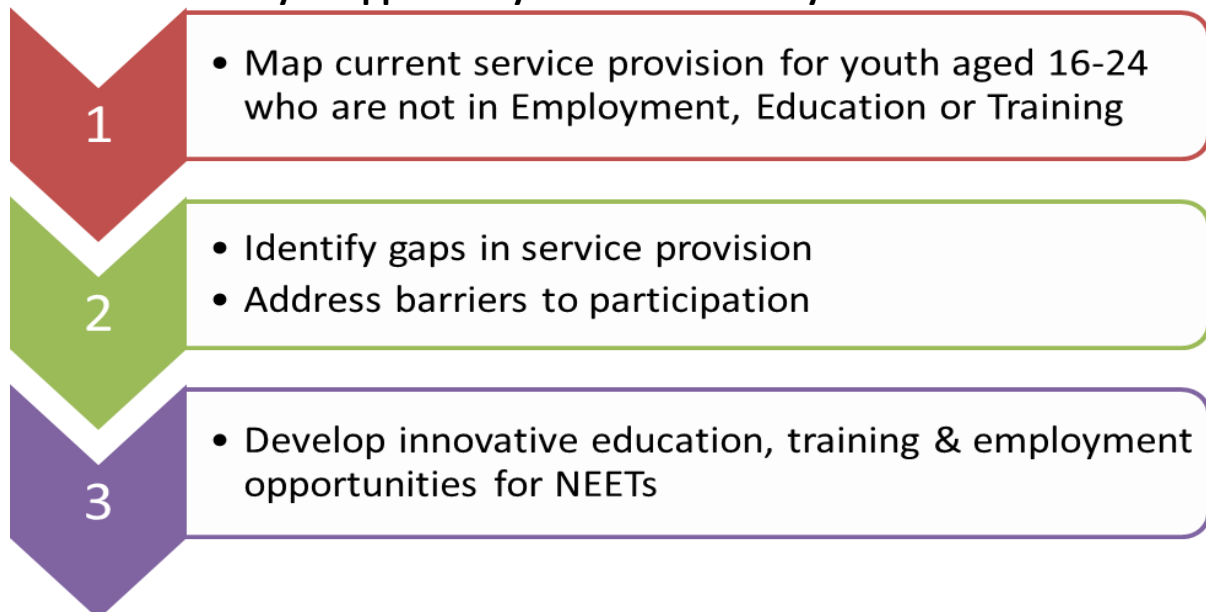
- Increase the uptake of family support & Meitheals in Kerry
- Address barriers to accessing family support & Meitheals
- Continue to support & develop Child & Family Support Networks

- Map services & supports available for parents, children & young people
- Ensure information on services available is accessible via Kerry CYPSC website

- Address gaps in service provision, in particular service gaps identified via Meitheal including:
 - Play therapy, counselling & autism supports,
 - Lead practitioner upskilling & training; FS for Traveller Families
 - Outreach drugs & alcohol support services

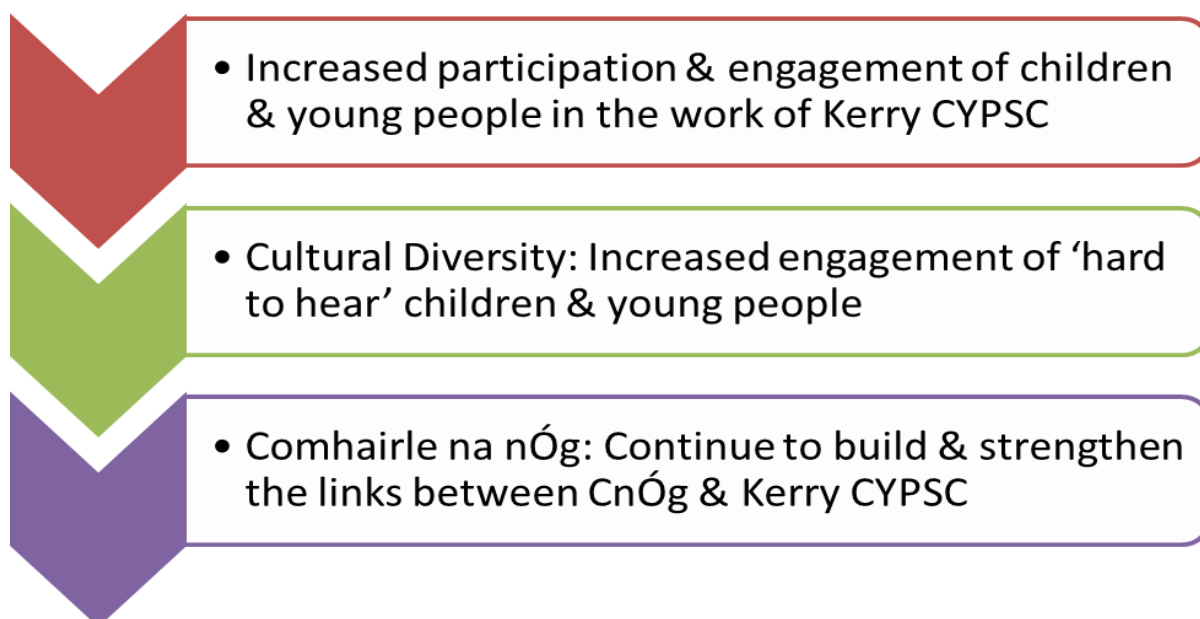
Outcome 4: Economic Security & Opportunity	
How are Children & Young People in Kerry Doing?	<ul style="list-style-type: none"> In 2016 there was a total of 30 small areas with very disadvantaged or disadvantaged deprivation scores (-16.1 to -25.1). There was a population of 6,265 residing in the 30 SAs with the lowest scores. This accounts for 4.2% of the total population in Kerry. Of the total population residing in these areas, 29.2% (or 1,831) were aged less than 24 years. In 2016, there were 984 lone parent households on the social housing waiting list in Kerry; this rate was the sixth highest rate in the State and was above the State average of 127.3. In 2016, there were 293 young people under the age of 25 on the social housing waiting list in Kerry; this was the second highest rate in the State and was above the State average of 18.8. According to Census 2016, the total population unemployed and residing in Kerry was 8,701. This represented 12.4% of the total labour force (At Work and Unemployed). A total of 24.9% of families in Kerry in 2016 were lone parent families (6,468 families). 980 One Parent Family Payments were being made in 2016. In 2015, 1592 Family Income Supplements were made in Kerry & 4511 Back to School Clothing Allowances were paid in the county. As of December 2015, there were 16,768 children and young people aged under 24 qualifying for a GMS medical card in the Kerry LHO. As of July 2017, there were 968 young people (under 25 years) on the Live Register in Kerry a rate of 96 which is above the state rate of 82.1.
What did the Consultations Tell Us?	<p>Parents told us that further education & training opportunities for their young people are very important to them & they would like to access information on this more easily.</p> <p>According to the CYPSC stakeholders, Kerry CYPSC should prioritise:</p> <ul style="list-style-type: none"> Progression pathways for young people with disabilities. Youth employment opportunities EU Youth Guarantee Scheme Youth entrepreneurship opportunities
Are there sufficient Services in this Outcome Area?	<ul style="list-style-type: none"> Greater collaboration, interagency working needs to be established & strengthened across youth employment, education & training supports. A range of innovative employment, training & education opportunities for NEETs need to be created & coordinated in Kerry. Housing for children & families on housing waiting lists is a concern. Sufficient CETs childcare places to support youth to access & remain in further education, training & employment Rural isolation & disadvantage needs to be given due consideration in the development & delivery of services in Kerry.

Economic Security & Opportunity Priorities for Kerry CYPSC



Outcome 5: Connected Protected & Respected	
How are Children & Young People in Kerry Doing?	<ul style="list-style-type: none"> In 2017 7 secondary schools participated in the Young Social Innovators Programme in Kerry a programme which provides secondary students to respond to local social issues in their communities. 54 young people participated in the Kerry CYPSC Youth as Peer Researchers Project in Kerry in 2016/17 undertaking research on a range of topics which were important to them including mental health, gambling, pressure to excel & the HPV Vaccine. Over 6000 young people participate in youth clubs in Kerry. There are a number of targeted projects for young people in Kerry including SPY (Special Projects for Youth), Garda Youth Diversion, YouthReach, Killorglin NYP & a range of targeted programmes offered via FRCs.
What did the Consultations Tell Us?	<p>Stakeholders told us that Kerry CYPSC should prioritise:</p> <ul style="list-style-type: none"> Including the voice of children & young people in our work; The rights of children & young people as set out in the UNCRC; New Irish communities & including them in our work; Traveller young people; LGBT+; Youth representation on Kerry CYPSC; Continued partnership with Kerry Comhairle na nÓg <p>Parents told us that we need to prioritise:</p> <ul style="list-style-type: none"> Opportunities for young people to socialise without alcohol; Participation & inclusion; Bullying; Internet safety <p>Young people told us that we need to prioritise:</p> <ul style="list-style-type: none"> Spaces for young people to hang out; Access to services for rurally based young people; Peer pressure – being able to have their own individual identity but be connected & respected; Youth employment
Are there sufficient Services in this Outcome Area?	<p>The challenge of rural isolation is a real issue for children, young people & families in county Kerry. Accessing services outside the main urban centres with limited public transport was a recurring theme.</p> <p>The challenges of disadvantage are masked by the Pobal approach to measuring disadvantage which makes rural isolation & disadvantage almost invisible. The numbers accessing the Back to School Clothing & Footwear Allowance suggests that up to 25% of children qualified for the BSFCA in 2015 (5411 BSFCA payments in 2015).</p> <p>Funding for youth work is increasingly focusing on targeted youth work provision which has resulted in significantly reduced funding to support universal youth work supports. Universal youth work provides a forum for young people to socialise, learn & develop in their own communities; it is inclusive & preventative & provides valuable supports to young people across the county. Kerry CYPSC members expressed concern re the depletion of universal, community youth supports in the county.</p>

Connected, Protected & Contributing Priorities for Kerry CYPSC



Section 5: Summary of Children and Young People's Plan for Kerry

Outcome Areas	Local Priority Areas*
1. Active and healthy, physical and mental wellbeing	1. Child & Youth Mental Health 2. Substance Misuse 3. Healthy Ireland
4. Achieving full potential in learning and development	1. Parenting & Early Years 2. Progression Pathways for Young People with Intellectual Disabilities, Autism & /or Acquired Brain Injury Aged 18-24
3. Safe and protected from harm	1. Prevention, Partnership & Family Support
2. Economic security and opportunity	1. Supporting Transitions of Young People 16-24 Not in Employment, Education or Training
2. Connected, respected and contributing to their world	1. Youth Participation & Cultural Diversity
Change Management	Local Priority Areas
Change management - CYPSC may also identify priority areas relating to change management and supports needed to enable interagency collaboration at local level, e.g. development of interagency protocols, development of information sharing protocols, interagency training.	1. Strategic Advocacy Role of Kerry CYPSC 2. Strategic Data Gathering & Needs Analysis 3. Information Sharing via Kerry CYPSC Website

Section 6: Action Plan for Kerry Children and Young People's Services Committee

Action Plan for KERRY Children and Young People's Services Committee: CHILD & YOUTH MENTAL HEALTH WORKING GROUP

Outcome 1: Healthy Both Mentally & Physically: CHILD & YOUTH MENTAL HEALTH

Priority Area	Objective(s)	Indicators	Target	Activities	Time for completion	Lead Responsibility & partners	Link to other plans or work	Linked to national outcome(s)
Supports for Parents, Children & Young People through Interagency Collaboration	To ensure education for parents and YP is included in the plan to address anxiety, stress, bullying and other MH issues	Accessible, user friendly information is available to all stakeholders via the Kerry CYPSC Website Learning from previous projects & reports is available via Kerry CYPSC Website	Develop an improved & effective CYPSC website A dedicated person to manage the website Link information to www.yourmentalhealth.ie as appropriate	Developing the CYPSC website as a key resource/ signposting support/ information across agencies/partners for all MH info and training in Kerry Reconfiguring and launching the website (using social media) as a key platform for all MH info for everyone in Kerry Involving schools, parents and young people in this, eliciting their views, what their needs are in MH and specifically what is useful for the website (focus groups/ online surveys?) Promote & share Kerry CYPSC Child & Youth Mental Health information & resources via the Kerry CYPSC Website. <ul style="list-style-type: none"> Update information & resources as appropriate. Positive Parenting: parent information on developing positive CYP and parent relationships. Information on social media and its impact on CYP and child-parent relationship.	December 2018	Kerry CYPSC Child & Youth Mental Health Working Group	Better Outcomes Brighter Futures: Outcomes 1, 3 & 5 <ul style="list-style-type: none"> Active & Healthy both Mentally & Physically Safe & protected from Harm Connected, Protected & Contributing to their World. Connecting for Life Kerry Kerry CYPSC Workplan	Outcomes 1, 2, 3, & 5 Transformational Goals: Support parents, Early intervention & prevention, Involve children, Ensure quality services, Strengthen transitions, Interagency collaboration
Promote Mental Health & Well-Being in Education Settings	Support the development of Student Support Teams (SSTs) in all secondary schools in line with DES Well-Being Guidelines Promote & Support Well-Being & Resilience in Schools: Mandated Programmes in Junior Cycle; Primary School	SSTs are developed in all secondary schools in line with DES Guidelines Well-Being Programmes are	Training on SST development is offered to secondary schools SSTs developed in schools Well-being programmes are delivered to children & young people across all	SST training is offered to all secondary schools via Kerry Life Skills /Kerry ETB with the supports of appropriate agencies i.e. NEPS, CAMHS, NBSS, Jigsaw Support & guidance on the development & implementation of SSTs is coordinated by CYPSC & all relevant stakeholders Promote a holistic, whole school approach re Mental Health & Well-Being in Schools in Kerry. <ul style="list-style-type: none"> Kerry CYPSC members recognise that there is a huge amount of 	On-Going 2018 - 2020	NEPS, NBSS, Kerry Life Skills, Secondary Schools, Kerry ETB, CAMHS, Jigsaw, SWCC, KACS, Kerry CYPSC NEPS, HSE Health Promotion, Kerry Schools, Kerry ETB, Kerry CYPSC	Better Outcomes Brighter Futures: Outcomes 1, 3 & 5 <ul style="list-style-type: none"> Active & Healthy both Mentally & Physically Safe & protected from Harm Connected, Protected & Contributing to their 	Outcomes 1, 2, 3, & 5 Transformational Goals: Support parents, Early intervention & prevention, Involve children, Ensure quality services, Strengthen transitions,

Action Plan for KERRY Children and Young People’s Services Committee: CHILD & YOUTH MENTAL HEALTH WORKING GROUP

Outcome 1: Healthy Both Mentally & Physically: CHILD & YOUTH MENTAL HEALTH

Priority Area	Objective(s)	Indicators	Target	Activities	Time for completion	Lead Responsibility & partners	Link to other plans or work	Linked to national outcome(s)
	<p>Programmes</p> <p>Promote appropriate positive mental health & well-being programmes & approaches in early years settings</p> <p>Work with all relevant stakeholders to promote & support well-being & positive mental health programmes in Primary Schools</p> <p>Work with second chance education settings i.e. YouthReach centres, Training centres etc to promote positive mental health & well-being programmes for young people.</p>	<p>promoted & supported in early years settings; national schools; secondary schools & second chance education settings.</p>	<p>levels of education in Kerry.</p>	<p>excellent work happening across schools (national & secondary) i.e. Friends For Life; Zippy’s Friends; Incredible Years which are supported by NEPS, HSE HP</p> <ul style="list-style-type: none"> Organise appropriate seminars, training, conferences etc to support mental health & well-being across all levels of the education sector as required <p>Work with Kerry County Childcare to deliver appropriate well-being programmes in early years settings which build on Aistear, Síolta & Diversity, Equality & Inclusion initiatives.</p> <p>Appropriate well-being & positive mental health programmes are promoted via Kerry CYPSC & its working groups</p> <p>Second Chance Education:</p> <ul style="list-style-type: none"> Identify programmes & supports currently available in second chance education. Identify gaps in service provision Work with YR & Training centres to address identified 		<p>Kerry County Childcare, Kerry CYPSC, Early Years Sector</p> <p>Early years settings; national schools, secondary schools, YouthReach centres & support agencies</p>	<p>World.</p> <p>DES Guidelines Well-Being in Schools (Post Primary & Primary)</p> <p>Connecting for Life Kerry</p> <p>Kerry CYPSC Workplan</p>	<p>Interagency collaboration</p>

Action Plan for KERRY Children and Young People’s Services Committee: CHILD & YOUTH MENTAL HEALTH WORKING GROUP

Outcome 1: Healthy Both Mentally & Physically: CHILD & YOUTH MENTAL HEALTH

Priority Area	Objective(s)	Indicators	Target	Activities	Time for completion	Lead Responsibility & partners	Link to other plans or work	Linked to national outcome(s)
				gaps.				
Parent Infant Mental Health Networks	To promote positive parent /infant mental health through professional multi-disciplinary network forums in Kerry	Promote & develop the multi-disciplinary parent infant networks in Kerry. Support ongoing professional development of members via training & seminars on parent infant mental health Priority areas	Ensure best evidence informed practice & learning across the networks & agencies to promote positive parent infant MH Ensure the learning is shared across disciplines & agencies to improve work practice	Reconfigure the professional multi-disciplinary parent infant networks in Kerry to ensure their ongoing effectiveness & relevance to participants & beneficiaries. Engage with & upskill representatives from the early years sector Coordinate regular network meetings Organise & coordinate appropriate training, upskilling, seminars, conferences etc Share the learning via Kerry CYPSC website; ensure information is current & evidence based /informed.	On-Going 2018-2020	HSE Child, Adolescent & Family Psychology; CAMHS, PHN, KIDS, Tusla, Kerry CYPSC	Better Outcomes Brighter Futures: Outcomes 1, 3 & 5 <ul style="list-style-type: none"> Active & Healthy both Mentally & Physically Safe & protected from Harm Connected, Protected & Contributing to their World. Connecting for Life Kerry The Nurture Programme Kerry CYPSC Workplan	Outcomes 1, 2, 3, & 5 Transformational Goals: Support parents, Early intervention & prevention, Involve children, Ensure quality services, Strengthen transitions, Interagency collaboration
Self Harm & Suicide Prevention	To support the implementation of Connecting for Life Child & Youth Actions in Kerry	Effective structures to support information sharing & collaborative work across Kerry CYPSC & CFL Kerry are established. Priority areas	Kerry CYPSC supports the implementation of CFL Kerry child & youth actions in the county. Child & Youth Self Harm & Suicide Prevention is addressed through collaborative working	Kerry CYPSC will work with CFL Kerry structures to ensure harmony & effective actions across Kerry CYPSC Workplan & CFL Kerry. Specific attention will be given to CFL Kerry child & youth actions. Work will address & promote: <ul style="list-style-type: none"> Increased awareness of available Suicide Prevention services; 	On-Going 2018-2020	NOSP, Kerry CFL Structures, Kerry CYPSC, Kerry CYPSC Child & Youth Mental Health Working Group, All relevant agencies	Connecting for Life Kerry 2017-2020 Better Outcomes Brighter Futures: Outcomes 1, 3 & 5 <ul style="list-style-type: none"> Active & Healthy both Mentally & Physically Safe & protected from Harm Connected, Protected & 	Outcomes 1, 2, 3, & 5 Transformational Goals: Support parents, Early intervention & prevention, Involve children, Ensure quality services, Strengthen transitions, Interagency collaboration

Action Plan for KERRY Children and Young People’s Services Committee: CHILD & YOUTH MENTAL HEALTH WORKING GROUP								
Outcome 1: Healthy Both Mentally & Physically: CHILD & YOUTH MENTAL HEALTH								
Priority Area	Objective(s)	Indicators	Target	Activities	Time for completion	Lead Responsibility & partners	Link to other plans or work	Linked to national outcome(s)
		of work are identified & appropriate actions agreed.		<ul style="list-style-type: none"> Support Critical Incident & Suicide Response Plans Improve Referral Pathways to /between services i.e. Dual Diagnosis; referral from community services to more specialist supports etc Inclusion of high risk groups / ensure information & services are accessible with specific focus on Travellers, LGBTQ, Ethnic Minorities 			Contributing to their World. Kerry CYPSC Workplan	

Action Plan for KERRY Children and Young People's Services Committee: SUBSTANCE MISUSE WORKING GROUP								
Outcome 1: Healthy Both Mentally & Physically: SUBSTANCE MISUSE								
Priority Area	Objective(s)	Indicators	Target	Activities	Time	Lead Responsibility & partners	Link to other plans or work	National outcome(s)
Dual Diagnoses	To enhance integrated Mental Health/Addiction services for young people Protocols for Mental Health Services and Addiction Services to enable collaborative working	Sub-group est. Protocol developed / implemented		Establish if Protocols have been developed at National or CHO Level Adopt, adapt or implement protocols Establish an interagency working group to support this work	2018-2020	HSE Mental Health Services, HSE Addition Services & CYPSC Drug and Alcohol working group	SRDATF HSE Mental Health and Drugs and Alcohol Services Connecting For Life	Outcomes 1, 2, 3, & 5 Transformational Goals: Support parents, Early intervention & prevention, Involve children, Ensure quality services, Strengthen transitions, Interagency collaboration
Parents	Work with all stakeholders to address the impact on young people of parental & societal attitudes and behaviours in relation to alcohol	Seminar / event organised	1 per year	Organise appropriate information & awareness seminars on substance misuse across the county for parents, young people & all stakeholders as required.	2018-2020 On-going	Kerry CYPSC, HSE D&A Services, SRDATF, KDYS, Kerry ETB, Parents Groups & associations	Better Outcomes Brighter Futures; Reducing Harm Supporting Recovery; National Drug Strategy; Healthy Ireland; Compass Cork Kerry HI Implementation Plan;	Outcomes 1, 2, 3, & 5 Transformational Goals: Support parents, Early intervention & prevention, Involve children, Ensure quality services, Strengthen transitions, Interagency collaboration
Funding for Drug Services in Kerry	Advocate for additional funding for Drug and Alcohol Services in Kerry	Pilot established Outreach service developed	Outreach Worker For SK & possibly WK	Organise & pilot an Outreach Drugs & Alcohol Worker to serve Killorglin, Cahersiveen & Kenmare <ul style="list-style-type: none"> Organise & coordinate funding for 6 months pilot Establish the need (if required) through the pilot initiative to 	2018 Jan – June 2019	Kerry CYPSC, SKDP, Kerry ETB, Kerry County Council, Gardaí SRDATF, HSE D&A Services, FRCs, Local Schools	Better Outcomes Brighter Futures; Reducing Harm Supporting Recovery; National Drug Strategy; Healthy Ireland; Compass Cork Kerry HI Implementation Plan;	Outcomes 1, 2, 3, & 5 Transformational Goals: Support parents, Early intervention & prevention, Involve children, Ensure quality

Action Plan for KERRY Children and Young People's Services Committee: SUBSTANCE MISUSE WORKING GROUP

Outcome 1: Healthy Both Mentally & Physically: SUBSTANCE MISUSE

Priority Area	Objective(s)	Indicators	Target	Activities	Time	Lead Responsibility & partners	Link to other plans or work	National outcome(s)
				<p>mainstream an Outreach D&A Worker to support these areas i.e. data gathering & analysis.</p> <ul style="list-style-type: none"> Develop a proposal for mainstreaming the pilot project & advocate for same via local stakeholders, local politicians etc Explore the possibility of establishing a similar pilot initiative to serve the Dingle /West Kerry area. Highlight service gaps based on the evidence for the CYPSC plan 	2019-2020			services, Strengthen transitions, Interagency collaboration
Availability of Alcohol	Make a contribution to reducing the availability of and marketing of alcohol to young people in Kerry			<ul style="list-style-type: none"> Map the availability of alcohol in Kerry, Support Test Purchasing; Provide information and education in relation to Licencing Laws. <p>Work with key stakeholders to reduce the negative effects of the availability of alcohol & direct marketing of alcohol to young people</p>	2018-2020 On-going	Kerry CYPSC & all stakeholders		<p>Outcomes 1, 2, 3, & 5</p> <p>Transformational Goals: Support parents, Early intervention & prevention, Involve children, Ensure quality services, Strengthen transitions, Interagency collaboration</p>

Action Plan for KERRY Children and Young People's Services Committee: SUBSTANCE MISUSE WORKING GROUP

Outcome 1: Healthy Both Mentally & Physically: SUBSTANCE MISUSE

Priority Area	Objective(s)	Indicators	Target	Activities	Time	Lead Responsibility & partners	Link to other plans or work	National outcome(s)
Information & Education on Alcohol & Substance Misuse	Provide accessible information to your people in a form and through a medium they will use	App developed		<p>Establish if there are current national or regional approaches to information provision with an evidence base</p> <p>Develop a APP that could provide information on Alcohol & substances</p> <ul style="list-style-type: none"> • Include an appropriate self-screening tool i.e. Audit • Highlight appropriate referral pathways to supports 	2019	Kerry CYPSC & all stakeholders	Better Outcomes Brighter Futures; Reducing Harm Supporting Recovery; National Drug Strategy; Healthy Ireland; Compass Cork Kerry HI Implementation Plan;	Outcomes 1, 2, 3, & 5 Transformational Goals: Support parents, Early intervention & prevention, Involve children, Ensure quality services, Strengthen transitions, Interagency collaboration
		Poster developed		Develop a poster which highlights the continuum of alcohol use & support services available at all stages	2018	Kerry CYPSC & all stakeholders		
	Continue to implement the THINK About Alcohol Preventative Education Programme in Secondary Schools	THINK About Alcohol Training delivered THINK About Alcohol booklet available	15 teachers trained bi-annually	Provide training & upskilling for teachers on the THINK About Alcohol Programme in schools bi-annually /as required. Update & reprint the THINK About Alcohol Booklet as required.	2018-20 On-going	Kerry Life Skills, Kerry ETB, Kerry CYPSC, Schools Kerry CYPSC		

Action Plan for KERRY Children and Young People's Services Committee: HEALTHY IRELAND WORKING GROUP

Outcome 1: Active & Healthy, Physically & Mentally: HEALTHY IRELAND

Priority Area	Objective(s)	Indicators	Target	Activities	Time for completion	Lead Responsibility & partners	Link to other plans or work	Linked to national outcome(s)
Physical Activities for Children 0-6	To enhance physical activities of babies & children 0-3 years & 3-6 years in early years settings.	No. of Physi-Kids Programmes 0-3 & 3-6 delivered	15 x 0-3yrs Physi-Kids progs 6 x 3-6yrs Physi-Kids progs	Organise & coordinate the delivery of the Physi-Kids 0-3 years & 3-6 years workshops to: <ul style="list-style-type: none"> • Childminders • Parent & Toddler Groups • Crèche providers • Preschool providers 	2018-2020	Kerry CYPSC & Kerry County Childcare Committee	Kerry CYPSC Workplan Better Outcomes Brighter Futures Healthy Ireland Get Ireland Active Compass Cork Kerry HI Implementation Plan	Outcomes 1, 2, & 5 Transformational Goals: Support parents, Early intervention & prevention, Involve children, Ensure quality services, Strengthen transitions, Interagency collaboration
Physical Activities for Disadvantaged Youth	To enhance physical activities and health & well-being behaviours of disadvantaged youth in YouthReach Centres in Kerry	Develop & deliver tailored physical activities programmes for YouthReach Students	Tailored programmes developed & delivered in 4 YouthReach Centres	Work with the 4 KDYS YouthReach Centre students & staff to develop & coordinate tailored physical health & well-being programmes to promote increased physical activities & positive health choices.	2018-2020	Kerry CYPSC KDYS IT Tralee	Kerry CYPSC Workplan Better Outcomes Brighter Futures Healthy Ireland Get Ireland Active Compass Cork Kerry HI Implementation Plan	Outcomes 1, 2 & 5 Transformational Goals: Support parents, Early intervention & prevention, Involve children, Ensure quality services, Strengthen transitions, Interagency collaboration
Community Health & Well-Being Awareness	Work with Kerry CYPSC Working Groups & stakeholders to develop & coordinate appropriate health & well-being	No. of health & well-being awareness & education	H&WB events for Parents, communities &	<ul style="list-style-type: none"> • Alcohol & Substance Misuse Awareness / Training Events • Parent Infant Mental 	2018-2020	Kerry CYPSC Working Groups in partnership with	Kerry CYPSC Workplan Better Outcomes Brighter Futures Connecting For Life Kerry Healthy Ireland	Outcomes 1, 2, 3, & 5 Transformational Goals: Support parents, Early

Action Plan for KERRY Children and Young People’s Services Committee: HEALTHY IRELAND WORKING GROUP								
Outcome 1: Active & Healthy, Physically & Mentally: HEALTHY IRELAND								
Priority Area	Objective(s)	Indicators	Target	Activities	Time for completion	Lead Responsibility & partners	Link to other plans or work	Linked to national outcome(s)
	<i>awareness & education initiatives in Kerry</i>	<i>events/ initiatives in Kerry</i>	<i>stakeholders in Kerry</i>	<p><i>Health Awareness /Training Events</i></p> <ul style="list-style-type: none"> <i>Alcohol Poster</i> <i>Parenting Support Events</i> <i>Other initiatives identified by Kerry CYPSC Working Groups</i> 		<i>appropriate stakeholders & agencies</i>	<i>Get Ireland Active Compass Cork Kerry HI Implementation Plan The Nurture Programme</i>	intervention & prevention, Involve children, Ensure quality services, Strengthen transitions, Interagency collaboration
Community Food & Nutrition Programmes	To enhance the skills & knowledge of parents, families & communities in Kerry in the area of food, nutrition & health literacy in order to promote positive health choices & improve health outcomes.	<p>No. of Community Food & Nutrition Programmes delivered in Kerry</p> <p>No. of Health Promoting Workshops</p>	<p>9 Community F&N programmes per year (Budget Permitting)</p> <p>2 x HP workshops to front line practitioners per year</p>	<p>To organise & coordinate the delivery of HSE Community Food & Nutrition Programmes to communities in Kerry</p> <p>To promote positive health & nutrition through community workshops i.e. Nutrition Boards to Early Years Providers, School, YouthReach Centres etc</p>	2018-2020	Kerry CYPSC, HSE Community Dieticians, HSE Health Promotion	<p>Kerry CYPSC Workplan Better Outcomes Brighter Futures Healthy Ireland Get Ireland Active Compass Cork Kerry HI Implementation Plan A Healthy Weight for Ireland</p>	<p>Outcomes 1, 2 & 5</p> <p>Transformational Goals: Support parents, Early intervention & prevention, Involve children, Ensure quality services, Strengthen transitions, Interagency collaboration</p>

Action Plan for KERRY Children and Young People's Services Committee: PROGRESSION PATHWAYS for YOUTH with INTELLECTUAL DISABILITIES, AUTISM & /or ACQUIRED BRAIN INJURY 18-24 YEARS

Outcome 2: Achieving & Learning in all areas of Development: PROGRESSION PATHWAYS WORKING GROUP

Priority Area	Objective(s)	Indicators	Target	Activities	Time for completion	Lead Responsibility & partners	Link to other plans or work	Linked to national outcome(s)
Young People Aged 18-24 with ID, ASD & /or ABI	Support the development of progression pathways to education, training & work opportunities for Youth with ID, ASD & ABI aged 18-24	Increased opportunities to education, training & employment for youth with ID, ASD or ABI	1 poster developed, circulated & available online	<p>Develop a poster which highlights the progression pathways for youth with ID, ASD or ABI from second level education to further education & training and from child to adult health services.</p> <ul style="list-style-type: none"> Ensure the poster provides 'parent friendly' information Print & distribute the poster to all relevant services & supports Ensure the poster is available online via the Kerry CYPSC Website 	2018	Kerry CYPSC, Kerry ETB, HSE Disability Services, NEPS, NCSE, Employability Kerry, DEASP, KIDS, Disability Support Services	<p>Better Outcomes Brighter Futures</p> <p>Progressing Disability Services for Children & Young People</p> <p>National Action Plan for Social Inclusion</p>	<p>1, 2, 5</p> <p>Transformational Goals Supporting parents; Supporting transitions; Early intervention & prevention; Ensure quality services; Interagency collaboration</p>
	Develop a pilot to support young people aged 16-18 with Autism to stay in education & progress to further education, training & work opportunities.	A pilot 'Junior Aspect' established in Kerry	6 Autistic young people in year 1 & an additional 6 in year 2.	<p>Work with HSE Disability Services and ASPECT Autism Support Service to develop the pilot project in Kerry.</p> <ul style="list-style-type: none"> Establish the pilot with 6 young people in year 1 Extend the pilot to an additional 6 in year 2 Ensure the learning from the pilot is captured so the learning can be shared via a research report 	2018-2020			
	Provide information for young people with disabilities & their parents on available progression routes in Kerry.	Relevant information is available to Young people with disabilities & their parents	Annual Disability Fair	Work with all relevant stakeholders to organise & coordinate a Disability Fair annually which showcases the range of services & supports available for young people 16-24 with disabilities.				

Action Plan for KERRY Children and Young People's Services Committee: PROGRESSION PATHWAYS for YOUTH with INTELLECTUAL DISABILITIES, AUTISM & /or ACQUIRED BRAIN INJURY 18-24 YEARS

Outcome 2: Achieving & Learning in all areas of Development: PROGRESSION PATHWAYS WORKING GROUP

Priority Area	Objective(s)	Indicators	Target	Activities	Time for completion	Lead Responsibility & partners	Link to other plans or work	Linked to national outcome(s)
---------------	--------------	------------	--------	------------	---------------------	--------------------------------	-----------------------------	-------------------------------

Action Plan for KERRY Children and Young People's Services Committee: PARENTING & EARLY YEARS WORKING GROUP

Young People with Intellectual Disabilities 18-24	Organise, coordinate & pilot a Tourism Guide Training Course for young people aged 18-24 with intellectual disabilities to replicate the Andalucían El Realejo project in which young people with Down syndrome are Tour Guides for their area.	Tour Guide training course established & piloted in Killarney	1 course in Killarney & 1 course in Tralee in year 2	<p>Work with all stakeholders to design, develop & pilot the Tour Guide training programme for youth with ID in Killarney & other areas.</p> <ol style="list-style-type: none"> 1. Develop the training programme & recruit students from the ITT /NLN Life Skills Course 2. Train the young people with ID 3. Offer the tour guide service 4. Ensure job coach supports are in place to ensure work placements are supported 	2018-2020	Kerry ETB, IT Tralee, Down Syndrome Ireland, Employability Kerry, Cork Kerry Tourism, Kerry County Council,	Better Outcomes Brighter Futures Progressing Disability Services for Children & Young People	1, 2, 3, 4 & 5 Transformational Goals Supporting parents; Supporting transitions; Early intervention & prevention; Ensure quality services; Interagency collaboration
----------------------------------------------------------	-------------------------------------------------------------------------------------------------------------------------------------------------------------------------------------------------------------------------------------------------	---------------------------------------------------------------	------------------------------------------------------	-------------------------------------------------------------------------------------------------------------------------------------------------------------------------------------------------------------------------------------------------------------------------------------------------------------------------------------------------------------------------------------------------------------------------------------------------------------------------------------	-----------	-------------------------------------------------------------------------------------------------------------	-----------------------------------------------------------------------------------------------------	---------------------------------------------------------------------------------------------------------------------------------------------------------------------------------------------

Action Plan for KERRY Children and Young People's Services Committee: PARENTING & EARLY YEARS WORKING GROUP

Outcome 2: Achieving & Learning in all areas of Development: PARENTING & EARLY YEARS

Priority Area	Objective(s)	Indicators	Target	Activities	Time for completion	Lead Responsibility & partners	Link to other plans or work	Linked to national outcome(s)
Parents Information & Support	To support parents in their parenting role through the provision of appropriate training & information relevant to them	<p>Parents Info pages developed & included on the Kerry CYPSC Website</p> <p>Parents info events are organised</p> <p>Therapeutic parenting programme training for PHNs, CAMHS & Community Parents etc</p>	Parents in Kerry	<p>To work with the PPFS working group to map all parent support services available in Kerry for inclusion in the website.</p> <p>To develop parents pages which provide information appropriate to the ages / stages /additional needs of children & young people which provides:</p> <ol style="list-style-type: none"> 1. basic parent friendly info across the ages & stages of childhood & adolescence 2. sign posts to support services on all levels of Hardiker 3. sign posts to other useful websites 4. provides a calendar of programmes, workshops etc as they are available for parents in Kerry <p>Organise parents information days in Kerry (annually or bi-annually)on identified topics with relevant stakeholders</p> <p>Organise training for key front line practitioners in Therapeutic Parenting Programmes to ensure parents parenting in difficult circumstances are supported i.e. parents with children on CAMHS wait lists</p>	<p>2018</p> <p>2018-2020</p> <p>2018/19</p>	<p>Kerry CYPSC;</p> <p>Parenting Kerry Working Group;</p> <p>Prevention Partnership & Family Support Working Group</p> <p>NEWKD, SKDP</p>	<p>Better Outcomes Brighter Futures</p> <p>Tusla Parenting Strategy</p>	<p>Outcomes 1, 2, 3, 5</p> <p>Transformational Goals: Support Parents Early intervention & prevention Ensure quality services</p>

Action Plan for KERRY Children and Young People's Services Committee: PARENTING & EARLY YEARS WORKING GROUP

Outcome 2: Achieving & Learning in all areas of Development: PARENTING & EARLY YEARS

Priority Area	Objective(s)	Indicators	Target	Activities	Time for completion	Lead Responsibility & partners	Link to other plans or work	Linked to national outcome(s)
Early Years	<p>Extend the Language & Play Programme to all active Parent & Toddler Groups in Kerry</p> <p>Support the development of new & sustainability of existing Parent & Toddler Groups in Kerry.</p>	<p>Funding identified & sourced to support both actions</p> <p>L&P programmes offered /delivered to 9 P&T groups PA</p> <p>Part time P&T development officers in place to support this action</p>	<p>Parent & Toddler Groups – parents of & children 0-3</p>	<p>Organise& coordinate the delivery of 10 L&P programmes per year to P&T groups in Kerry</p> <p>Coordinate& organise the delivery of appropriate 0-3 programmes i.e. healthy food & nutrition, Physi-Kids etc via P&T groups across the county</p> <p>Endeavour to source funding for 2 x part time P&T Development Officers in Kerry.</p> <ol style="list-style-type: none"> 1. Ensure the sustainability of local P&T groups which provide vital informal social supports to parents/ carers of young children 2. Ensure links with community level services /supports i.e. PHNs, FRCs, KIDS etc are strengthened & enhanced 	2018-2020	<p>Parenting Kerry WG;</p> <p>Kerry County Childcare;</p> <p>FRCs;</p> <p>HSE;</p> <p>KETB</p> <p>NEWKD</p> <p>SKDP</p>	<p>Better Outcomes Brighter Futures</p> <p>Tusla Parenting Strategy</p>	<p>Outcomes 1, 2, 3, 5</p> <p>Transformational Goals: Support Parents Early intervention & prevention Ensure quality services</p>
Parenting Support Champions	<p>To embed the learning, evidence informed practice & key messages from the Tusla Parenting Support Champions initiative into the work of Kerry CYPSC.</p>	<p>No. of Evidence informed training events for professionals working with parents</p>	<p>3 training events per year</p>	<p>To deliver evidence informed practice training to FRC Family Support Workers, Community Parents, PHNs & other professionals working directly with parents & families.</p> <ol style="list-style-type: none"> 1. Signpost to 50 key messages, Parenting 24Seven & other parenting support materials 	2018-2020	<p>Parenting & early years working group</p> <p>PPFS working group</p> <p>Parenting support</p>	<p>Better Outcomes Brighter Futures</p> <p>Tusla Parenting Support Strategy</p>	<p>Outcomes 1, 2, 3, 5</p> <p>Transformational Goals: Support Parents Early intervention & prevention</p>

Action Plan for KERRY Children and Young People's Services Committee: PARENTING & EARLY YEARS WORKING GROUP

Outcome 2: Achieving & Learning in all areas of Development: PARENTING & EARLY YEARS

Priority Area	Objective(s)	Indicators	Target	Activities	Time for completion	Lead Responsibility & partners	Link to other plans or work	Linked to national outcome(s)
	To support parents in their parenting role	Enhanced range of quality supports for parents	1 magazine per year	<p>2. Organise the delivery of PSC training for front line practitioners</p> <p>3. Support local learning networks</p> <p>To develop a parents information magazine to support parents in their parenting role across all stages of child & adolescent development.</p> <p>To work with all working groups to 'parent proof' initiatives i.e. to ensure info & education initiatives for children & young people are also available for parents.</p> <p>To endeavour to develop & support parental engagement structures /build on existing parental participation structures in Kerry.</p>	2019	<p>champions FRCs, PHNs</p> <p>Kerry CYPSC working groups</p> <p>NEWKD</p> <p>SKDP</p>		Ensure quality services
	To enhance parental engagement & participation in the work of Kerry CYPSC.	Increase parental engagement & participation across Kerry CYPSC & its working groups.	Increased parental participation		2018-2020			

Action Plan for KERRY Children and Young People's Services Committee: PREVENTION, PARTNERSHIP & FAMILY SUPPORT

Outcome 3: Safe & Protected from Harm: PREVENTION, PARTNERSHIP & FAMILY SUPPORT WORKING GROUP

Priority Area	Objective(s)	Indicators	Target	Activities	Time for completion	Lead Responsibility & partners	Link to other plans or work	Linked to national outcome(s)
	Provision <ul style="list-style-type: none"> • Counselling • Autism Supports • Additional Lead Practitioners for Meitheals • Targeted Family Support for Traveller Community • Outreach Drugs & Alcohol Worker for South Kerry 			therapy, child counselling to support the Meitheal programme throughout Kerry <ul style="list-style-type: none"> • Lobby for a Junior Aspect Service to support the Meitheal process for some referrals • Source additional training for FS workers • FS Worker for Travellers • Support provision of Rural D&A Workers 	2018 - 2020			services

Action Plan for Kerry Children and Young People's Services Committee: OPPORTUNITIES FOR NEETs WORKING GROUP								
Outcome 4 Economic Security & Opportunity: Opportunities for Young People Aged 16-24 Who Are Not in Employment, Education or Training (NEET)								
Priority Area	Objective(s)	Indicators	Target	Activities	Time for completion	Lead Responsibility & partners	Link to other plans or work	Linked to national outcome(s)
Establish Current Service in Kerry for NEETs	Map current services & supports available in Kerry for NEETs aged 16-24	Current services & supports mapped	Youth NEET Services in Kerry	Organise a consultation with all relevant agencies & stakeholders including SKDP/NEWKD, KCC, DSP, KDYS, ITT, Kerry College of Further Education to identify current service provision. Map / establish current services & supports available	2018-2019	Kerry CYPSC, SKDP/NEWKD, KCC, DSP, KDYS, ITT, Kerry College of Further Education, LCDC, Local Business Organisations	Better Outcomes Brighter Futures LCDC KCC County Plan LDC Plans	2, 4, 5 Goals: Support Transitions; Quality Services
Identify Gaps in Current Service Provision for NEETs in Kerry	Identify gaps & opportunities to develop sustainable work, education & training opportunities for NEETs 16-24 in Kerry	Gaps identified	Creative Options identified	Following the mapping of current services & supports to work with key stakeholders to identify gaps & opportunities in work, education & training.	2018-2019	Kerry CYPSC, SKDP/NEWKD, KCC, DSP, KDYS, ITT, Kerry College of Further Education, LCDC, Local Business Organisations	Better Outcomes Brighter Futures LCDC KCC County Plan LDC Plans	2, 4, 5 Goals: Support Transitions; Quality Services
Develop Innovative Education, Employment & Training Pathways for NEETs 16-24 Outside of Kerry LECP e.g. Tourism	Develop Innovative Education, Employment & Training Pathways for NEETs 16-24 Outside of Kerry LECP e.g. Tourism to include opportunities such as music, arts, multi-media, animation & or film. Explore & develop youth entrepreneurship opportunities via YouthReach in Kerry	Initiative developed	Initiative piloted	Pilot an innovative, creative progression pathway for NEETs 16-24 in the county. Opportunities to explore alternative progression pathways such as to include opportunities such as music, arts, multi-media, animation & or film. Explore & develop youth entrepreneurship opportunities via YouthReach in Kerry with all relevant agencies /stakeholders.	2018-2020		Better Outcomes Brighter Futures LCDC KCC County Plan LDC Plans	2, 4, 5 Goals: Support Transitions; Quality Services; Listen to young people

Action Plan for Kerry Children and Young People's Services Committee: YOUTH PARTICIPATION & CULTURAL DIVERSITY WORKING GROUP

Outcome 5: Connected, respected and contributing to their world: Youth Participation & Cultural Diversity

Priority Area	Objective(s)	Indicators	Target	Activities	Timeframe for completion	Lead Responsibility and partners	Link to other plans	Linked to other national outcome(s) and or Transformational Goal(s)
Participation of children and young people	<p>Children and young people are actively involved in the planning of services which are aimed at supporting them.</p> <p>To facilitate the participation of children & young people in the development of initiatives across Kerry CYPSC</p>	<p>Children contribute to the planning and development of a Youth Participation Conference</p> <p>The views of children & young people are included in Kerry CYPSC initiatives through consultation & engagement etc.</p>	<p>Youth Participation Conference Planning Group established & supported; Conference organised.</p> <p>Kerry CYPSC initiatives & projects are 'youth proofed'</p>	<p>Young people plan and develop a Youth Participation Conference for Kerry with the support of the Youth Participation & Cultural Diversity Working Group.</p> <p>Children & youth are consulted on projects i.e. booklets, initiatives which are aimed at them.</p> <p>A youth 18-24 representative structure is developed in partnership with key stakeholders to ensure youth representatives on Kerry CYPSC</p> <p>Agenda Days are organised in partnership with Investing In Children & findings are included in the work of Kerry CYPSC.</p>	<p>December 2018</p> <p>2018-2020</p>	<p>Kerry CYPSC Youth Participation & Cultural Diversity Working Group; KDYS; Comhairle na nÓg; Kerry ETB; Gardaí; Kerry County Childcare Committee</p>	<p>Better Outcomes Brighter Futures</p> <p>National Strategy for the Participation of Children and Young People in Decision-making</p> <p>Healthy Ireland</p> <p>Connecting for Life Kerry</p>	<p>Outcome 5: Connected, Protected & Contributing</p> <p>Transformational Goals: Listen to and involve children and young people Inter-agency collaboration and co-ordination</p>
Cultural Diversity	To increase the participation of 'Hard to Hear' young people in the planning of services & supports which	Increased engagement with Traveller, New Irish & marginalised	An annual event to celebrate cultural diversity	<p>Engage with culturally diverse children & young people to organise an event /initiative to celebrate cultural diversity.</p> <ol style="list-style-type: none"> Engage with different hard to hear children & young people; Identify an initiative they 	2018-2020	<p>Kerry CYPSC Youth Participation & Cultural Diversity Working Group; KDYS; Comhairle na nÓg; Kerry ETB; Gardaí; Kerry County Childcare</p>	<p>Better Outcomes Brighter Futures</p> <p>National Strategy for the</p>	<p>Outcome 5: Connected, Protected & Contributing</p> <p>Transformational</p>

Action Plan for Kerry Children and Young People's Services Committee: YOUTH PARTICIPATION & CULTURAL DIVERSITY WORKING GROUP								
Outcome 5: Connected, respected and contributing to their world: Youth Participation & Cultural Diversity								
Priority Area	Objective(s)	Indicators	Target	Activities	Timeframe for completion	Lead Responsibility and partners	Link to other plans	Linked to other national outcome(s) and or Transformational Goal(s)
	affect them.	children & young people and LGBT+ youth.		would like to work on; 3. Support them to plan & coordinate same.		Committee Kerry Travellers Development Project; Tralee International Resource Centre; KASI Immigrant Support Centre.	Participation of Children and Young People in Decision-making Healthy Ireland Connecting for Life Kerry	Goals: Listen to and involve children and young people Inter-agency collaboration and co-ordination
Comhairle na nÓg	Continue to engage with Kerry Comhairle na nÓg to ensure their continued participation in Kerry CYPSC.	Ongoing engagement with CnÓg	Relationship with Kerry CnÓg is strengthened. Kerry CnÓg engage & participate in Kerry CYPSC actions as appropriate	CnÓg reps to attend CYPSC meetings & events CYPSC members & Coordinator to attend CnÓg meetings & events as appropriate CSC Coordinator to be a member of the Kerry CnÓg Steering Group Consult with & work with CnÓg on CYPSC actions as appropriate	2018-2020	Kerry CYPSC Youth Participation & Cultural Diversity Working Group; Kerry Comhairle na nÓg; KDYS; Kerry County Council	Better Outcomes Brighter Futures National Strategy for the Participation of Children and Young People in Decision-making	

Action Plan for Kerry Children and Young People's Services Committee								
Change management								
Priority Area	Objective(s)	Indicators	Target	Activities	Timeframe for completion	Lead Responsibility and partners	Link to other plans	Linked to other national outcome(s) and or Transformational Goal(s)
Strategic Advocacy Role of Kerry CYPSC	To develop & strengthen the advocacy role of Kerry CYPSC	Improved communication & information sharing with National CYPSC Steering Group; National Bodies; Government Depts etc.	Issues identified locally which require national support are communicated & followed up with relevant body.	To develop & strengthen links to key strategic local, regional & national structures to support the work of Kerry CYPSC, its working groups & partners at local county level. To highlight high level priorities & key strategic blockages encountered by Kerry CYPSC & its partners to appropriate Departments, National CYPSC Steering Group, National Policy Consortium to be addressed at national level.	2018-2020	Kerry CYPSC	Better Outcomes Brighter Futures	All National Outcomes & Transformational Goals
Strategic Data Gathering & Needs Analysis	Support Kerry CYPSC to continue to gather, collate & analyse relevant data across all indicator sets to ensure accurate data analysis and appropriate service provision to ensure positive outcomes for children, young people & families in county Kerry.	Kerry CYPSC Data Report prepared following each census Research reports prepared as required on all relevant priority action areas /relevant issues.	Kerry Child Well-Being Data Report prepared every 5 years Local CWB data reports prepared every 2-3 years Local research reports undertaken & completed as required to inform work.	Update Socio-Demographic profiling & geo-mapping across all 5 national outcomes in Kerry regularly. Map current service provision across 5 national outcomes in line with Hardiker Model to support quality analysis of service provision & identify gaps in same. Undertake research & prepare reports on Kerry CYPSC pilot projects, service gaps etc with a view to identifying ways to mainstream /address same as appropriate.	2018-2020	Kerry CYPSC	Better Outcomes Brighter Futures	All National Outcomes & Transformational Goals

Section 7: Monitoring and Review

Local Level

- An annual Work Plan will be agreed for each of the 3 years of the plan & submitted to the DCYA.
- Each working group presents a progress update at every Kerry CYPSC meeting. Issues are identified & addressed via the CYPSC. As this workplan is a live document, emerging issues are also identified in 'real time' & therefore can be addressed by the committee & its working groups
- An annual review of the Work Plan will be completed by the first quarter of the subsequent year.
- An overall review of the 3-year Plan will be completed as part of the planning process for the next 3-year Plan (2018-2020).

National Level

A quarterly submission is made to the National Coordinator, the National Steering Group and the Department of Children & Youth Affairs by the Coordinators Network, which reports on progress under the 5 national outcomes and includes contribution from Kerry CYPSC & all CYPSCs.