



CHILDREN & YOUNG PEOPLE'S SERVICES COMMITTEES  
COISTÍ NA SEIRBHÍSÍ DO LEANAÍ & DO DHAOINE ÓGA

Galway

Gaillimh

## **Galway Children and Young People's Plan 2021 – 2023**

Galway Children and Young People's Services Committee

## Contact

The Galway Children and Young People's Services Committee welcomes comments, views and opinions about our Children and Young People's Plan.

**Please contact:**

Morgan Mee

Coordinator, Galway Children and Young People's Services Committee

[morgan.mee@tusla.ie](mailto:morgan.mee@tusla.ie)

086 417 9046

Copies of this plan are available on [www.cypsc.ie](http://www.cypsc.ie).

## Contents

Foreword .....	i
COVID-19 Implementation Context .....	ii
Section 1: Introduction.....	1
<i>Background to Children and Young People’s Services Committees</i> .....	2
<i>Who we are</i> .....	3
<i>Achievements to date/Review of previous plan</i> .....	7
<i>How this plan was developed</i> .....	11
Section 2: Socio-Demographic Profile of Co. Galway.....	13
Section 3: Overview of Services to Children and Families in Co. Galway.....	46
Section 4: Local Needs Analysis in Co. Galway.....	65
Section 5: Summary of Children and Young People’s Plan for Co. Galway.....	71
Section 6: Action Plan for Co. Galway Children and Young People’s Services Committee .....	73
Section 7: Monitoring and Review .....	89
Section 8: Appendices .....	90



## Foreword

As chairperson of Galway Children and Young People's Committee, I am delighted to present the Children and Young People's Plan 2021 – 2023.

This is Galway's second Children and Young People's Plan and will build upon the good work undertaken by the committee to date. The plan will guide the committee's efforts to progress its overarching goal of improving outcomes for children and young people through interagency working.

Implementing this plan will bring about changes to the range of supports and initiatives that are provided for children, young people and their families. Moreover, it will mean changes to the way services operate in that these supports will be delivered collaboratively. Interagency work is challenging and I would like to thank all of the statutory, community and voluntary organisations who have committed to putting this plan into practice.

We will continue to work together for the benefit of children and young people in Galway city and county.

A handwritten signature in black ink, appearing to read 'John Donnellan', is centered on the page. The signature is written in a cursive style with a large initial 'J'.

John Donnellan  
Chair, Galway Children and Young People's Services Committee

## COVID-19 Implementation Context

The emergence of COVID-19 has brought significant change for us all. The ramifications of the pandemic are already affecting Galway's children and young people across each of the principal outcome areas set out in national policy: health, learning, safety, economic opportunity and social connectedness. The medium and long-term impacts are unknown.

Services working with children and young people have demonstrated great dedication and flexibility in the way they have responded to an environment of rapidly changing needs and circumstances. For statutory, community and voluntary services alike, the pandemic may well bring lasting change to structures, remits and approaches.

Despite these uncertainties, Galway Children and Young People's Services Committee believes that this plan identifies valid and informed priority areas of work. While the data analysis and consultations that informed this plan were undertaken prior to the public health emergency, it is the committee's view that the needs identified have only become more pressing in the intervening period.

While the actions set out in this plan are considered appropriate and realistic, their delivery will have to reflect a shifting and unpredictable operational landscape.

The following considerations will inform the interpretation, scheduling and focusing of actions:

- Lead partners are invited to propose necessary amendments to actions to ensure compliance with all relevant public health advice.
- Where the benefit of an action is likely to be diminished due to the pandemic, Lead Partners are inviting to propose suspending implementation, entirely or partially.
- Where an opportunity presents, the committee is keen to contribute to the response to the pandemic. This may take the form of re-focusing existing actions or undertaking additional actions.



## Section 1: Introduction

The purpose of the Children and Young People's Services Committees (CYPSCs) is to secure better outcomes for children and young people through more effective co-operation and collaboration by existing services and through interventions at local level.

CYPSC work towards the five national outcomes for children and young people in Ireland. These are that children and young people:

- 1** are active and healthy, with positive physical and mental wellbeing
- 2** are achieving full potential in all areas of learning and development
- 3** are safe and protected from harm
- 4** have economic security and opportunity
- 5** are connected, respected and contributing to their world

### NATIONAL OUTCOMES



## Background to Children and Young People's Services Committees

### Children and Young People's Services Committees in Ireland

The Office of the Minister for Children and Youth Affairs, now the Department of Children and Youth Affairs, established the Children and Young People's Services Committees (formerly Children's Services Committees) in 2007 with the purpose of improving outcomes for children and families at local and community level. Since then, CYPSC have increased incrementally in number and are a key structure identified by Government to plan and co-ordinate services for children and young people, aged 0 – 24 years, in every county in Ireland.

CYPSC bring a diverse group of agencies across the statutory, community and voluntary sectors in local county areas together to engage in joint planning of services for children and young people. All major organisations and agencies working locally on behalf of children and young people are represented. These committees work to improve the lives of children, young people and families at local and community level through collaborative planning and improved service delivery.

*Better Outcomes, Brighter Futures: the National Policy Framework for Children and Young People 2014 – 2020*<sup>1</sup> underscores the necessity of interagency working and tasks Children and Young People's Services Committees with a key role in this regard.

### Children and Young People's Services Committee in Galway

Galway Children and Young People's Services Committee was established by Tusla, Child and Family Agency, under the auspices of the Department of Children and Youth Affairs in 2014 as part of the fourth phase of the national roll-out of CYPSCs.

A Children and Young People's Services Committee Co-ordinator working with both the Galway and Roscommon CYPSCs took up post in January 2014. In 2015 a researcher was appointed to work with both committees (part time). A Coordinator was appointed to work with Galway Children and Young People's Services Committee in October 2016. The Terms of Reference of the Galway Children and Young People's Services Committee are presented in Appendix 1.

Galway CYPSC developed, implemented and reviewed a Children and Young People's Plan for the period 2016 – 2018. This is the county's second plan.

---

<sup>1</sup> Department of Children and Youth Affairs (2014) *Better Outcomes Brighter Futures: The national policy framework for children and young people 2014 – 2020*. Dublin: Stationary Office.

## Who we are

The membership of Galway Children and Young People’s Services Committee is as follows:

Member Organisation	Representative	
Tusla Child and Family Agency	John Donnellan	<i>Chair</i>
Galway City Council	Caitríona Morgan	<i>Vice Chair</i>
Galway County Council	Ciarán Coyne	<i>Vice Chair</i>
An Garda Síochána	Ciara Moran	
COPE Galway	Dr. Carol Baumann	
Family Resource Centres, Galway	Belinda Mullins	
Foróige	Dick O’Donovan	
Galway Childcare Committee	Stacey Forde	
Galway City Partnership	Declan Brassil	
Galway Rape Crisis Centre	Cathy Connolly	
Galway Roscommon Education and Training Board	Sara Ní Chuirreáin	
Galway Traveller Movement	Margaret O’Riada	
HSE, Area Medical Office	Dr. Catherine Kinsella	
HSE, Child and Adolescent Mental Health Services	Dr. Gary Mc Donald	
HSE, Disability Services	Mary O’Donnell	
HSE, Health and Wellbeing Division	Evelyn Fanning	
HSE, Health and Wellbeing Division	Anne O’Neill	
HSE, Psychology	Dr. Clare Gormley	
HSE, Public Health Nursing	Kathleen Malee	
Irish Primary Principals’ Network	Frank Keane	
Jigsaw	Sarah Simkin	
National Association of Principals and Deputy Principals	Margaret Griffiths	
National Educational Psychological Service	C. Burke / Dr. M. McMahon	
NUI Galway Students’ Union	Pádraic Toomey	
The Probation Service	John Mannion	
Tusla, Child Protection	Julie O’Donnell	
Tusla, Education Support Services	Bridget McGreal	
Tusla, Partnership, Prevention and Family Support	Susan Forde	
Údarás na Gaeltachta	Hannah O’Tuairisg	
Western Region Drugs and Alcohol Task Force	Michéal Durcan	
Youth Work Ireland, Galway	Deirdre Bermingham	

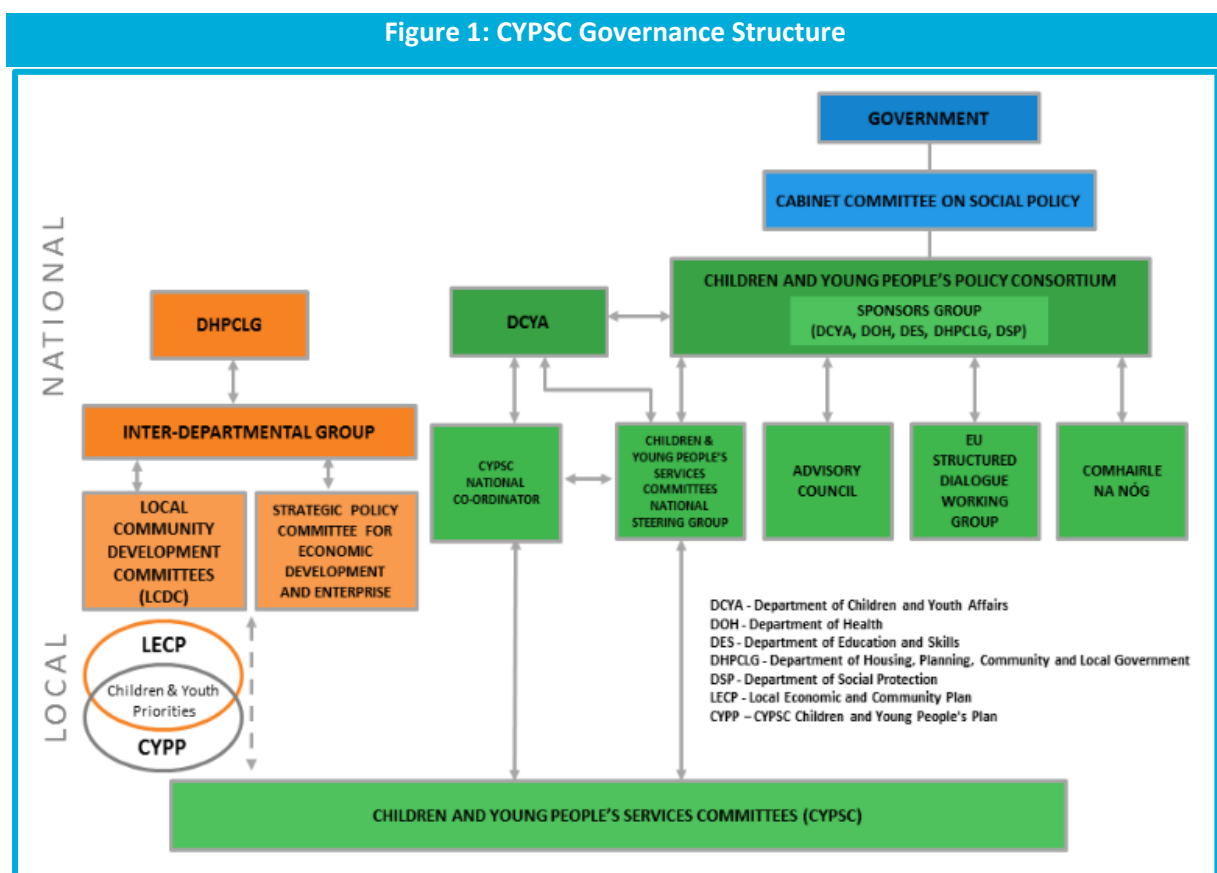
Galway CYPSC will convene a number of sub-groups to support delivery of this plan. As set out in Shared Vision, Next Steps 2019 – 2024<sup>2</sup>, these sub-groups will align with the national outcomes for children.

<sup>2</sup> Department of Children and Youth Affairs (2019) *Shared Vision, Next Steps 2019 – 2014*. Dublin: Department of Children and Youth Affairs.



## Key Linkages and Relationships

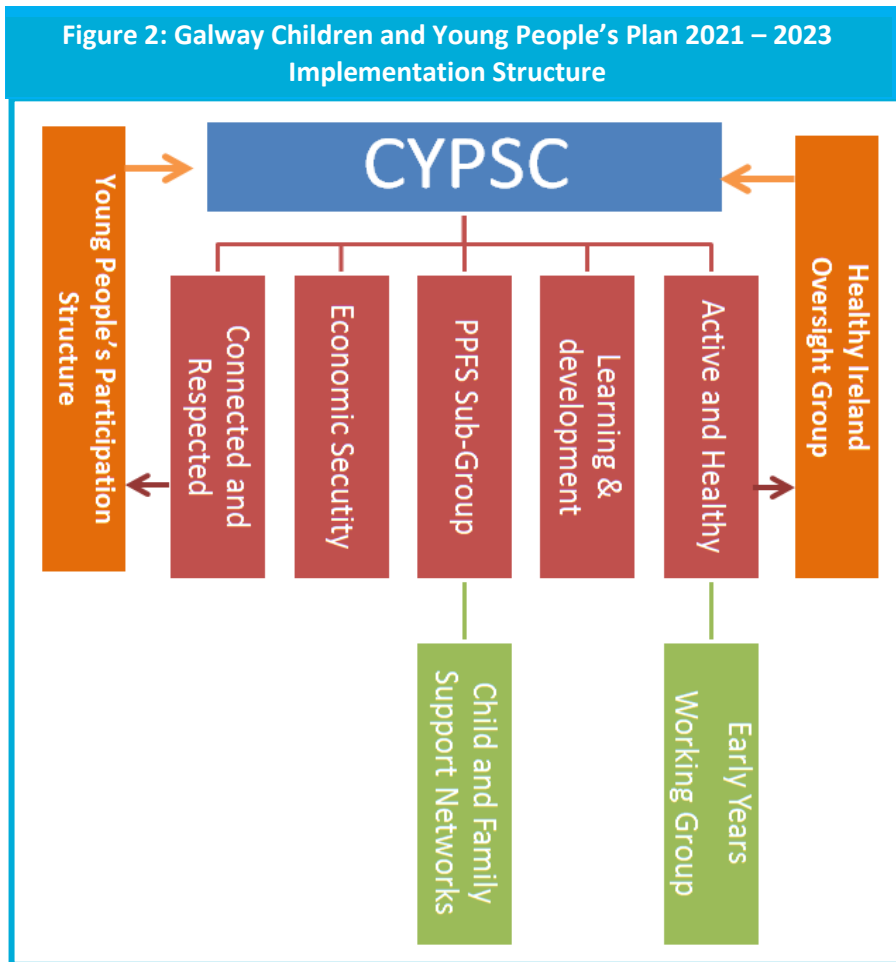
Figure 1 illustrates the governance structure for Children and Young People’s Services Committees and the relationship between CYPSCs and the Local Community Development Committee (LCDC) interagency structures established under the Department of Housing, Planning and Local Government. Guidance on how this relationship is developed is set out in *The Local Community Development Committees (LCDC) – Children & Young People’s Services Committees (CYPSC) Guidance Document (2016)*.



Aside from Galway CYPSCs own substructure and the associated Child and Family Support Networks, the committee is represented on the following local oversight groups and steering committees:

Children’s Creative Health Advisory Group, Galway
CHO2 Child Health Governance Group
Galway City Alcohol Forum
Galway City Comhairle na nÓg Steering Committee
Galway City LCDC Social Inclusion Sub-group
Galway City LECP Seed 3 – Educational Transitions for Disadvantaged Groups
Galway City LECP Seed 6 - Intercultural Strategy Group
Galway City LECP Seed 9 - Sustainable Development Goals
Galway City Partnership
Galway City Traveller Interagency Group
Galway County Comhairle na nÓg Steering Committee
Galway County LCDC Health and Wellbeing Sub-group
Galway County Traveller Interagency Group
Galway LGBTI+ Interagency Group
Galway STEAM Advisory Committee
Galway Roscommon Education Training Board Youth and Arts Committee
NUI, Galway Joint Programme Board for BA in Child, Youth & Family, Policy and Practice and the BA in Community and Family Studies
Planet Youth Galway Steering Committee
Safefood Galway Community Food Initiative Steering Committee

## Structure of Galway Children and Young People's Services Committee 2020 – 2023



Sub-groups will support the implementation of the actions in this plan. Membership of the sub-groups will comprise nominees from relevant Galway CYPSC member organisations. Sub-group convenors will act as a conduit between each sub-group and the committee proper. In addition to the sub-groups, a Healthy Ireland Oversight Group will oversee delivery of Galway CYPSC's Healthy Ireland funded programme of work as agreed with the Department of Health and Pobal.

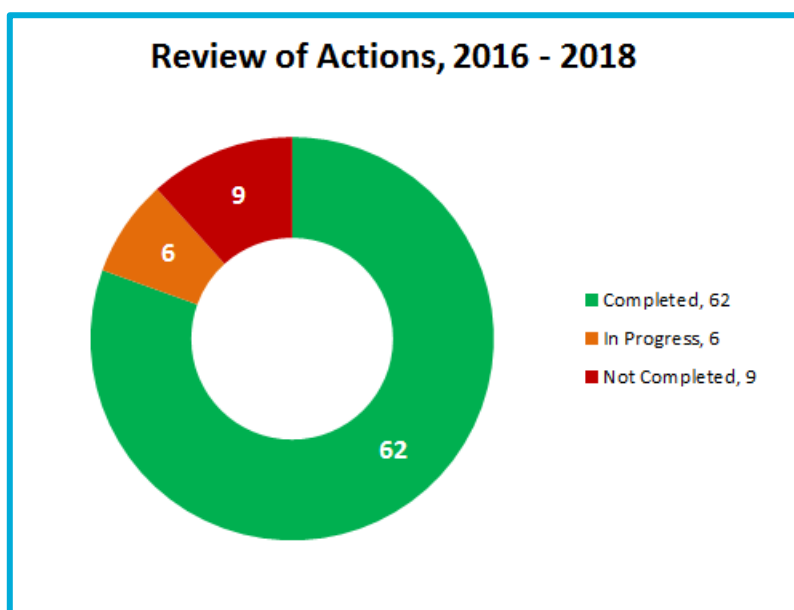
Galway Early Years Committee will continue to deliver actions set out in the Galway City Early Years Health and Wellbeing Plan 2016-2020. This committee will progress the national outcome relating to children being healthy and active while maintaining a specific focus on the 0 – 3 years cohort.

In line with *Shared Vision, Next Steps 2019-2024* the Prevention, Partnership and Family Support (PPFS) Steering Committee will act as a standing sub-group advancing the national outcome relating to the safety and protection of children. This sub-group will continue to support the work of local Child and Family Support Networks throughout the city and county.

## Achievements to date

In 2019, a review of the Galway Children and Young People’s Plan 2016-2018 was undertaken. The review comprised an audit of all actions contained in the plan and a review meeting that was facilitated by an external consultant.

The audit of actions demonstrated that 68 of the 77 actions contained in the plan were completed (62) or in progress (6).



The table below presents the status of actions in the Galway Children and Young People’s Plan 2016 – 2018 by priority area.

The review demonstrates that the highest number of completed actions (9) related to the priority area ‘Healthy and Active 0 - 3 year olds’. Of the 4 actions relating to this priority area that were not completed, 2 were not commenced by the Early Years Committee as they were being implemented at a national level by the Health Service Executive, Atlantic Philanthropies, Katharine Howard Foundation and the Centre for Effective Services through the Nurture Programme.

No actions that related to the priority area ‘Accessible Transport and Services in Rural Areas’ were completed.

## Review of Galway Children and Young People’s Plan 2016 – 2018: Overview of Findings

National Outcome	Priority Area	Actions Completed   Partially Completed   Not Completed
 Active and healthy, physical and mental wellbeing	<i>Healthy and Active 0-3 year olds</i>	9   1   4
	<i>Infant Mortality Rates</i>	3
	<i>Parental Mental Health and its Impact on Children</i>	6   1   1
 Achieving full potential in learning and development	<i>Supporting the transition from Preschool to primary school</i>	3
	<i>Keeping Children Safe Online</i>	5   1
 Safe and protected from harm	<i>Drugs and Alcohol</i>	2   2
	<i>Impact of Domestic Violence on Children</i>	4
	<i>Prevention, Partnership and Family Support</i>	5
	<i>Supporting Parents</i>	7   2
 Economic security and opportunity	<i>Providing opportunities to develop employable skills outside of school</i>	5
 Connected, respected and contributing to their world	<i>Accessible Transport and Services in Rural Areas</i>	2   1
	<i>Social Inclusion</i>	4 * <small>*Homework Club open for only 1 year</small>
Change Management	<i>Interagency Working &amp; Collaboration</i>	6
	<i>Relationship between children and young people and service providers</i>	3

In June 2019, the committee identified a number of key achievements from the preceding 3 year cycle.

These included:

- The building of new relationships and the strengthening of existing relationships between organisations delivering services for children and young people in the county. This has led to an increase in joint-delivery of actions and greater efficiency through sharing skill-sets.
- The provision of opportunities to services to improve the nature and extent of interaction with local young people. This has led to greater involvement of service-users in service design and implementation.
- A significant contribution to the understanding and knowledge-base of local services through consultations with children and young people, conducting needs analysis of specific geographical areas, researching issues relevant to children, young people and families and hosting seminars and networking events. This has led to more informed planning of service delivery.
- The delivery of new services for children and young people in the priority areas of 'Healthy and Active 0 – 3 year olds', 'Parental Mental Health and its Impact on Children', 'Impact of Domestic Violence on Children', 'Supporting Parents' and 'Providing opportunities to develop employability skills outside of school'. This has led to improved access to services for families and a speedier response to identified need.
- The development of new resources to help organisations share information about the needs of service users and communicate with parents. This has led to improved targeting of services and improved access to services.
- The design and delivery of joint training opportunities for staff and the development of shared modularised training opportunities for parents. This has contributed to a more skilled workforce and more confident parenting.
- The conveyance of funding into the county from the Department of Children and Youth Affairs' Seed Funding, Tusla's Participation Grant and the Department of Health's Healthy Ireland Programme. This has led to a broader range of services being made available to children and families.

The committee also identified a range of challenges to be addressed during the cycle of the next Children and Young People's Plan. These included:

- The need for member organisations to own a shared vision and mission and to articulate a set of principles to underpin the work of CYPSC.

- To strengthen the commitment of member organisations to CYPSC through improved understanding of CYPSC's role, greater ownership over CYPSC actions and improved feedback and communication from nominated members within their own organisations.
- CYPSC sub-committees need to be reconfigured to reflect national guidance relating to alignment to the national outcomes for children.
- The size of the committee (currently 22 member organisations) makes it somewhat unwieldy and affects participation, interaction and inclusion at meetings.
- The breadth of the committee's remit is very wide: children and young people from 0 to 24 year.
- The participation of young people in CYPSC needs to be reviewed and strengthened.
- The need to develop a broader, more strategic, role as a means of 'adding value' to work in the county and to 'influencing work' in the county.
- The committee needs to agree a role in relation to advocating at national level on behalf of local issues and lobbying for improved resources and services in the City/County.
- The need for greater communication and coordination with the city and county Local Community Development Committees.
- The committee needs to agree an approach to sustaining new services developed by sub-groups.
- It is important that the new plan is sufficiently broad and flexible to enable CYPSC to be responsive and remain relevant.
- There is need for a renewed focus on equality and human rights for all children and young people through the implementation of the Public Sector Equality and Human Rights Duty.

A number of learning points were also noted by the committee:

- Inter-agency work is time consuming and genuine change can only be achieved over the long term.
- Positive working relationships are at the core of what is working well in Galway CYPSC.
- CYPSC's role as an implementer of individual projects, as set out in the Children and Young People's Plan, needs to be balanced with its potential as a forum for articulating a shared strategic direction and advocating for change.
- Greater alignment of member organisation plans to the Galway Children and Young People's Plan will help place the work of CYPSC in context and to add weight to that work.
- The commitment of member organisations to prioritising and leading-out on actions is critical to successful implementation.

## How the Children and Young People’s Plan was developed

The Galway Children and Young People’s Plan has been informed by a combination of consultations with children, young people and families, desk research and statistical profiling. Consultations with children and young people were informed by the Lundy Model of Participation<sup>3</sup>. The timeline leading up to the development of the plan is presented here.

Year	Process	Stakeholders	Outputs
2018 and 2019	<p>CYPSC led Consultations with Young People:</p> <ul style="list-style-type: none"> <li>• Athenry Youth-led Research</li> <li>• Youth Consultation in Ballybane</li> <li>• Youth Consultation in North Connemara</li> </ul>	<p>Galway CYPSC, Youth-led Research Group, Foróige and FORUM adolescent Support Group.</p> <p>480 young people, 12 - 18 years, of which 447 were accessed through schools, 13 were accessed through youth services and 20 were accessed through targeted youth services.</p>	<p>Findings relating to how young people experience and prioritise issues affecting them.</p> <p>Findings relating to how young people view service delivery in the city and county areas.</p>
2018 and 2019	<p>Consultations with Young People with CYPSC involvement:</p> <ul style="list-style-type: none"> <li>• Planet Youth Census of Transition Year Students</li> <li>• GRETB Youth Consultations</li> </ul>	<p>Western Region Drugs and Alcohol Task Force, Galway City Council, Galway County Council and Galway Roscommon Education Training Board.</p> <p>2613 Transition Year students in Galway City and County and 86 young people attending youth services.</p>	<p>Findings relating to wellbeing and lifestyle of TY students.</p> <p>Findings relating to expectations and experiences of young people attending youth services.</p>
2019	<p>Planning Design Meeting</p>	<p>CYPSC representatives from Galway City Council, Tusla and HSE</p>	<p>Agreement on process of developing plan.</p>
2019	<p>Desk research / Profiling Exercising:</p> <ul style="list-style-type: none"> <li>• Needs Analysis of Ballybane Area</li> <li>• GRETB Evidence Baseline Report (scope expanded to align with CYPSC remit).</li> </ul>	<p>Ballybane Task Force, Eastside Child and Family Support Network, local service providers, local youth service users.</p> <p>GRETB and Youth Service Providers.</p>	<p>Area profile, needs analysis and recommendations for local service delivery.</p> <p>Needs analysis of Children and Young People with recommendations for youth work provision.</p>

<sup>3</sup> Lundy, L. (2007) ‘Voice is not enough: Conceptualising Article 12 of the United Nations Convention on the Rights of the Child’, *British Educational Research Journal*, Vol. 33, No. 6, pp. 927-42.



Year	Process	Stakeholders	Outputs
2019	CYPSC and GRETB Consultation with Youth Service Providers	Galway Roscommon Education Training Board and CYPSC. Five Youth Service Managers and 21 Youth Workers.	Findings relating to provision of youth services in the city and county.
2018 and 2019	PPFS sub-group online consultations with parents and facilitated focus groups for parents of children facing specific challenges (children with disabilities, children of new-Irish communities, Traveller children, children experiencing domestic violence, children growing up in disadvantaged communities).	PPFS sub-group, CFSN Coordinators, Tusla PPFS Manager, local schools, local services working with parents of children facing specific challenges.  604 parents responding to online survey and 120 parents participating in 12 themed focus groups.	Findings relating to parents' support needs and experiences of local services.  Findings relating to the needs and experiences of parents of children facing specific challenges.
2019	Review of Children and Young People's Plan 2016 – 2018	External Facilitator, CYPSC members, CYPSC Coordinator	Audit of actions comprising previous plan. Statement of Strengths and Challenges emerging during 2016 – 2018 period.
2018 and 2019	Statistical Profile of Galway	CYPSC Coordinator and CYPSC Researcher	Up-to-date socio-economic profile presenting relevant data from reliable sources including the 2016 census.
2019	3 x facilitated planning sessions	Galway CYPSC	Review of CYPSC vision, mission. Development of CYPSC Principals. Review of data and collected and issues emerging. Identification of Priority Areas of Work.
2020	Draft plan compiled and considered by CYPSC	Galway CYPSC	Review, amendment and agreement of plan.

## Section 2: Socio-Demographic Profile of Galway

This socio-demographic profile of Galway City and County areas relies heavily on data gathered during the 2016 census, and unless otherwise stated, all figures presented below have been taken from that source.

The profile also draws upon the *Evidence Baseline Report on Children and Young People in*

*Galway and Roscommon: A Needs-Analysis to inform Youth Work Provision* compiled by the Galway

Roscommon Education and Training Board in 2019. Where available, figures for the city area and the county area are disaggregated.

Table 1: Key Socio-demographic Statistics for Galway City and County					
		Galway City	Galway County	Galway City and County	National
<b>Total population</b>	Population, all ages 2016 <sup>4</sup>	<b>78,668</b>	<b>179,390</b>	<b>258,058</b>	<b>4,761,865</b>
<b>Child and youth population</b>	Number of children and young people, 0 - 24 years, 2016	<b>26,719</b> (or 34%)	<b>60,233</b> (or 33.6%)	<b>86,952</b> (or 33.7%)	<b>1,583,004</b> (or 33.2%)
<b>Child population</b>	The number of children, 0 - 17 years	<b>15,523</b> (or 19.7%)	<b>48,084</b> (or 26.8%)	<b>63,607</b> (or 24.6%)	<b>1,190,502</b> (or 25%)
<b>Young adult population</b>	Number of young people aged 18 - 24 years, 2016	<b>11,196</b> (or 14.2%)	<b>12,149</b> (or 6.8%)	<b>23,345</b> (or 9%)	<b>392,502</b> (or 8.2%)
<b>Infant mortality</b>	Number of deaths among infants per 1000, 2019 <sup>5</sup>	<b>0</b>	<b>3.4</b>	<b>3.4</b>	<b>3.2</b>
<b>Child mortality</b>	Deaths Occurring among children and young people 2018 <sup>6</sup>	1-4 years			
		<b>1</b>	<b>0</b>	<b>1</b>	<b>27</b>
		5-14 years			
		<b>0</b>	<b>4</b>	<b>4</b>	<b>54</b>
		15-24 years			
		<b>1</b>	<b>5</b>	<b>6</b>	<b>157</b>

<sup>4</sup> Central Statistics Office (2017) *Census 2016 StatBank Table E3003* [online] Available at: <https://statbank.cso.ie/px/pxeirestat/Statire/SelectVarVal/saveselections.asp>

<sup>5</sup> Central Statistics Office (2020) *Vital Statistics Yearly Summary 2019* [online] available at: <https://www.cso.ie/en/releasesandpublications/ep/p-vs/vitalstatisticsyearlysummary2019/>

<sup>6</sup> Central Statistics Office (2020) *Vital Statistics 2018 StatBank Table VSA07* [online] available at: <https://statbank.cso.ie/px/pxeirestat/Statire/Selectout/pivot.asp#>

**Table 1: Key Socio-demographic Statistics for Galway City and County (cont.)**

		Galway City	Galway County	Galway City and County	National
<b>Non-Irish national population</b>	Percentage of children and young people who are non-Irish nationals (0 - 24 years), 2016 <sup>7</sup>	<b>17.8%</b> (of which 8.3% is from outside EU28)	<b>6.7%</b> (of which 2.5% is from outside EU28)	<b>9.9%</b> (of which 4.2% is from outside the EU28)	<b>9.9%</b> (of which 4.1% is from outside EU28)
<b>Traveller children and young people</b>	The number of Traveller children and young people, 0 - 24 years, 2016	<b>949</b> (or 3.55% of pop aged 0 – 24 years)	<b>1,541</b> (or 2.56% of pop aged 0 – 24 years)	<b>2,490</b> (or 2.86% of pop aged 0 – 24 years)	<b>18,018</b> (or 1.14% of pop aged 0 – 24 years)
<b>Ethnicity</b>	Percentage of children and young people, 0 - 24 years, by ethnicity or cultural background, 2016 <sup>8</sup>	<b>Other White (excl. White Irish and White Irish Traveller)</b>			
		<b>12.2</b>	<b>5.7</b>	<b>7.7</b>	<b>7.7</b>
		<b>Black or Black Irish - African</b>			
		<b>4.6</b>	<b>0.6</b>	<b>1.8</b>	<b>2</b>
		<b>Black or Black Irish - any other Black background</b>			
		<b>0.2</b>	<b>0.3</b>	<b>0.2</b>	<b>0.2</b>
		<b>Asian or Asian Irish - Chinese Asian or Asian</b>			
		<b>0.6</b>	<b>0.1</b>	<b>0.3</b>	<b>0.5</b>
		<b>Irish - any other Asian background</b>			
<b>3.1</b>	<b>0.9</b>	<b>1.6</b>	<b>2</b>		
<b>Other including mixed background</b>					
<b>2.9</b>	<b>1.6</b>	<b>2</b>	<b>2.1</b>		
<b>Family structure</b>	Children (< 18 years) in family household units with only one parent or primary care-giver resident <sup>9</sup>	<b>5,353</b> (across 25.6% of h'holds)	<b>11,102</b> (across 16.4% of h'holds)	<b>16,455</b> (across 18.6% of h'holds)	<b>356,203</b> (across 21.2% of h'holds)

<sup>7</sup> Central Statistics Office (2017) *Census 2016 StatBank Table E7003* [online] Available at: <https://statbank.cso.ie/px/pxeirestat/Statire/SelectVarVal/Define.asp?Maintable=E7003&PLanguage=0>

<sup>8</sup> Central Statistics Office (2017) *Census 2016 StatBank Table E8001* [online] Available at: <https://statbank.cso.ie/px/pxeirestat/Statire/Selectout/pivot.asp>

<sup>9</sup> Central Statistics Office (2017) *Census 2016 StatBank Table E4019* [online] Available at: <https://statbank.cso.ie/px/pxeirestat/Statire/SelectVarVal/Define.asp?maintable=E4091&PLanguage=0>

**Table 1: Key Socio-demographic Statistics for Galway City and County (cont.)**

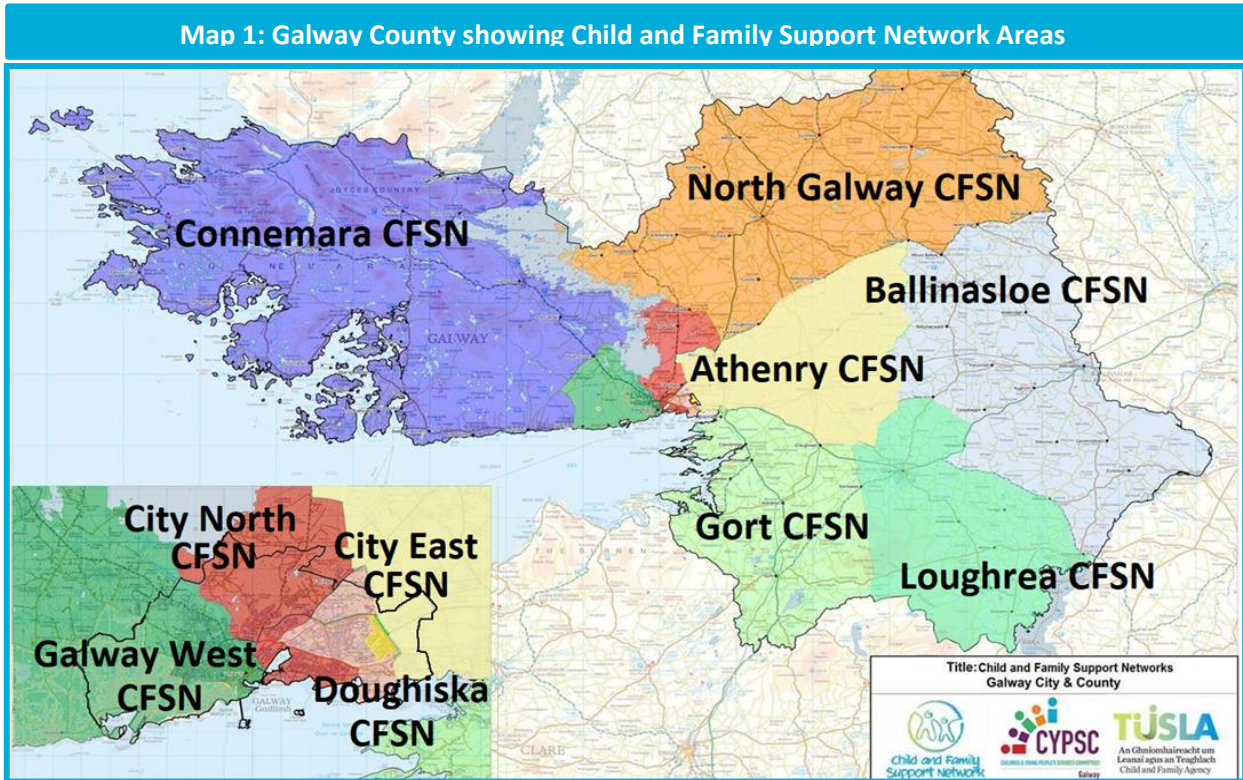
		Galway City	Galway County	Galway City and County	National
<b>Parental education level</b>	The number and percentage of children, < 18 years, by level of education attained by mother <sup>10</sup>	<b>Primary Level (incl. no formal education)</b>			
		<b>686</b> (or 4.4%)	<b>2,877</b> (or 6%)	<b>3,563</b> (or 5.6%)	<b>79,607</b> (or 6.7%)
		<b>Lower Secondary</b>			
		<b>1,065</b> (or 6.9%)	<b>4,435</b> (or 9.2%)	<b>5,500</b> (or 8.6%)	<b>130,900</b> (or 11%)
		<b>Upper Secondary</b>			
		<b>3,851</b> (or 24.8%)	<b>15,333</b> (or 31.9%)	<b>19,184</b> (or 30.2%)	<b>366,505</b> (or 30.8%)
		<b>Third-level</b>			
		<b>5,647</b> (or 36.4%)	<b>17,883</b> (or 37.2%)	<b>23,530</b> (or 37%)	<b>375,575</b> (or 31.5%)
<b>Children in International Protection Centres</b>	The number of children living in international protection accommodation centres, May 2019 <sup>11</sup>	<b>85</b>	<b>0</b>	<b>85</b>	<b>1,724</b>

<sup>10</sup> Central Statistics Office (2017) *StatBank Department of Children and Youth Affairs Table SCA25* [online] Available at: <https://statbank.cso.ie/px/pxeirestat/Statire/SelectVarVal/Define.asp?maintable=SCA25&PLanguage=0>

<sup>11</sup> Children's Rights Alliance (2019) Children's Rights Alliance (2019) *Submission to the Joint Oireachtas Committee on Justice and Equality on direct provision and the international protection process* [online] Available at: <https://www.childrensrights.ie/>

## Population

County Galway is situated on Ireland's West coast in the province of Connacht. With a land mass of 6,149 square kilometres, it is Ireland's second largest county. The county is currently divided into two distinct local authority areas administered by Galway City Council and Galway County Council respectively.



Galway City is the fourth most populous urban area in the Republic of Ireland and the largest city in the Western Region. It has been Ireland's most rapidly developing urban area and is the only city in Ireland to have experienced above average population growth during the period 1996 to 2016.

Beyond Galway City, the county area is predominantly rural with 139,477 people, almost 78% of the county population, living in rural areas. The county incorporates the single largest and most populous Gaeltacht area in the country; home to 9,445 people who speak Irish daily. The county is also home to a significant island population of 3,564 people with 1,401 of these living on off-shore islands.

**Table 2: Population Change per Administrative Area, 2011 and 2016**

	<b>Population 2011</b>	<b>Population 2016</b>	<b>Actual Change 2011-2016</b>	<b>% Change 2011-2016</b>
<b>Galway City</b>	75529	78668	3139	4.2
<b>Galway County</b>	175124	179390	4266	2.4
<b>City and County</b>	250653	258058	7405	2.9
<b>State</b>	4588252	4761865	173613	3.8

During the period 2011 to 2016, the population of Galway city grew at a faster rate (4.2%) than did the population in the surrounding county (2.4%). The national average rate of population growth during this time was 3.8%. Buoyed by the growth of Galway City, Galway has experienced an average annual population growth of 1.7% over the period 1991 to 2016. This figure is significantly higher than the national average of 1.4%. Ireland’s National Planning Framework strategy sets a minimum target population for Galway city of 120,000 people by 2040.<sup>12</sup> This would represent an average annual growth rate of 1.9% for the city.

### **Population, Age Profile and Family Composition**

The 2016 census of population recorded 258,058 people living in Galway. Of these, 78,668 people were living in Galway City.

Table 3, below, demonstrates that the age profile of the combined city and county area corresponds closely with national averages across each age group. However, the population aged 0 to 17 years is significantly under-represented in the city while the population of 18 to 24 year olds is significantly over-represented. A lower proportion of 0 to 17 year olds is typical of larger urban areas in Ireland. The over-representation in the cohort aged 18 to 24 years is likely to be linked to the location of NUI, Galway and GMIT in the city.

The reverse trend is evident in the county area with a higher proportion of 0 to 17 year olds and a lower proportion of 18 to 24 year olds living outside the city.

<sup>12</sup> Government of Ireland (2018) *Project Ireland 2040: National Planning Framework*. Dublin: Government of Ireland.

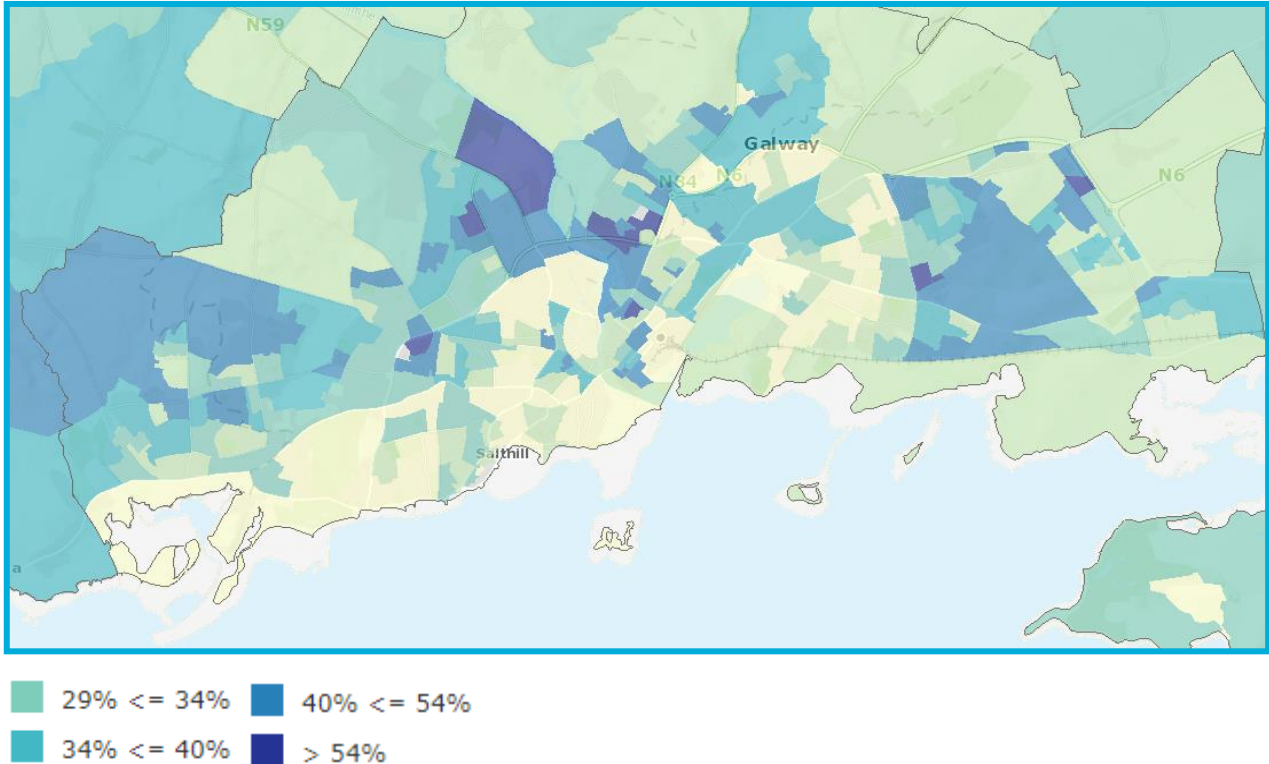
Table 3: Population by Age Group, 2016				
	Galway City	Galway County	City and County	National Figure
<b>Total Population</b>	78,668 100%	179,390 100%	258,058 100%	4,761,865 100%
<b>Aged 0 to 4</b>	4,772 6%	13,027 7%	17,799 7%	331,515 7%
<b>Aged 5 to 9</b>	4,525 6%	14,360 8%	18,885 7%	355,561 7%
<b>Aged 10 to 14</b>	3,942 5%	13,256 7%	17,198 7%	319,476 7%
<b>Aged 15 to 19</b>	5,003 6%	11,597 6%	16,600 6%	302,816 6%
<b>Aged 20 to 24</b>	8,477 11%	7,993 4%	16,470 6%	273,636 6%
<b>Total Aged 0 to 24</b>	26,719 34%	60,233 34%	86,952 34%	1,583,004 33%
<b>Total Aged 10 to 24</b>	17,422 22%	32,846 18%	50,268 19%	895,928 19%

With 34% of its population aged 0 to 24 years, Galway City's proportion of children and young people is slightly higher than the national average (33%).

Map 2, below, demonstrates that the distribution of young people, aged 0 to 24 years, as a proportion of the total population, is not uniform across the city. West of the river Corrib, significantly higher proportions of young people are living in the areas adjacent to NUI, Galway: Dangan ED (46.4%) and Newcastle ED (36.9%). East of the river, Mionlach ED (41.4%) and Ballybane ED (38.8%) contain high proportions of young people.



Map 2: Proportion of Population aged 0-24 years in Galway City by Small Area, 2016

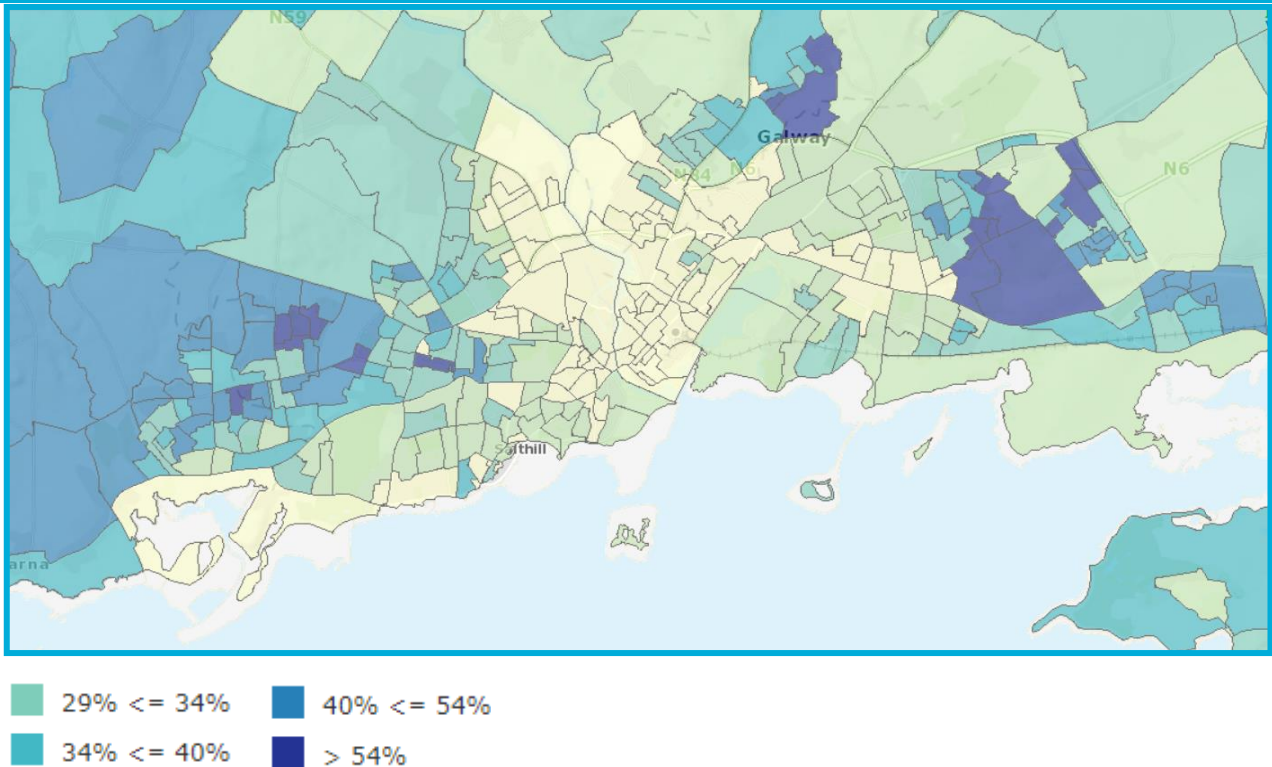


Source: AIRO, *Census 2016 Viewer*

Children, aged 0 to 18 years, as a proportion of the total population are also seen to be concentrated in certain city areas. Map 3 demonstrates that on the west side of the city, a higher concentration of children is found in the Knocknacara area of the city. On the east side of the city, Ballybane ED shows a very high concentration of children. Significantly, the Ballybane ED area is notable for having the highest proportion of 12 to 17 year olds and the highest proportion of 5 to 9 year olds in the city.



Map 3: Proportion of Population aged 0-18 years in Galway City by Small Area, 2016



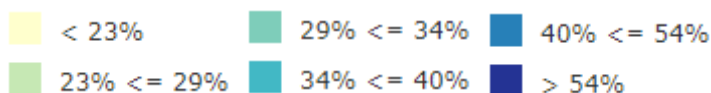
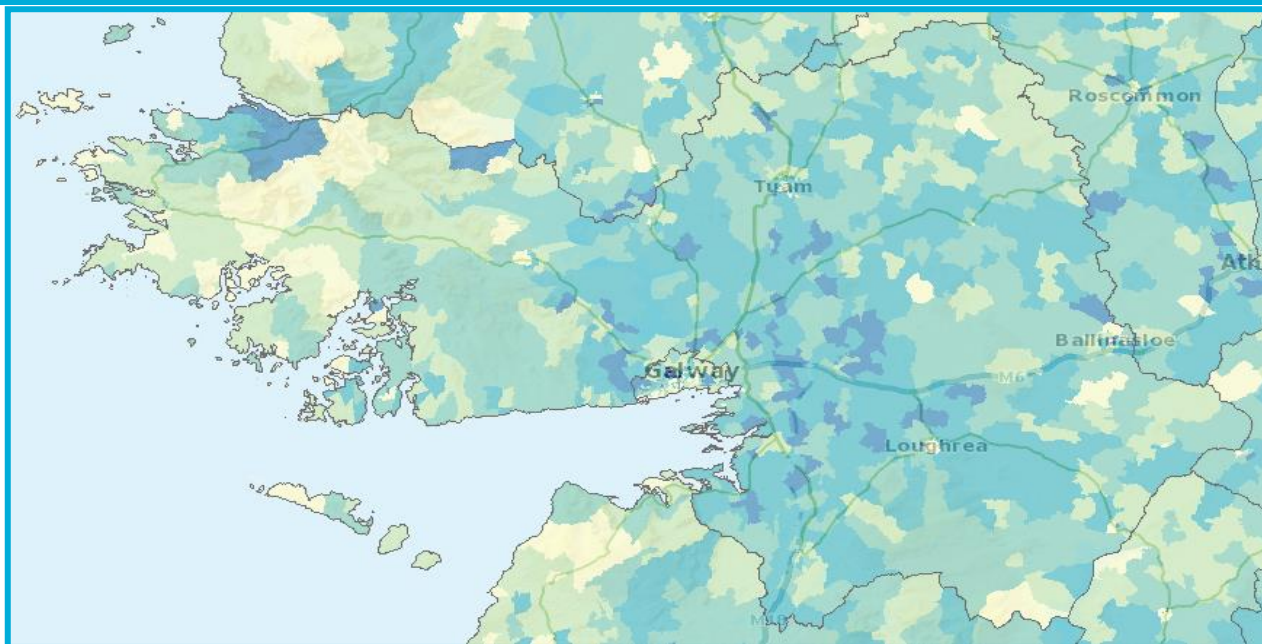
Source: AIRO, *Census 2016 Viewer*

In 2016, there were 179,390 people in the County Galway area. Over three quarters of these, 78%, were living in rural areas.

Map 4, below, demonstrates that the highest concentrations of young people, aged 0 to 24 years, are found in the commuter towns circling the city to the East and South. Electoral Divisions with notably high concentrations of young people include Stradbally ED (40.9%), Moycullen (38.7%) and Athenry (36.5%). These areas have all seen significant population growth in recent years.

The Connemara area, by contrast, has significantly lower concentrations of young people. The population of Letterbrickaun ED comprises just 17.3% of 0 to 24 year olds. Bencorr ED and Owengowla ED have similarly low concentrations of children and young people: 19.9% and 22.2% respectively.

**Map 4: Proportion of Population aged 0-24 years in Galway County by Electoral Divisions, 2016**



Source: AIRO, *Census 2016 Viewer*

### Marital / Civil Status of Population within Galway

In April 2016, 50% of people aged 15 years and over in the Ireland were in a first marriage. In this regard, the County Galway area (51.2%), broadly corresponded to the national average. However, only 35.8% of those aged 15 years and over in Galway City were in a first marriage. This represents a significant deviation from the national average. Perhaps this is attributable to the high proportion of students living in the city.

**Table 4: Detailed Marital Status of Population aged 15 years and over by County and City, 2016**

	Single	Married (first marriage)	Re-married	Registered Same-Sex Civil Part'ship	Separated	Divorced	Widowed
Galway City	34902	23418	845	87	1693	1901	2583
Galway County	50478	71038	2073	101	3848	3303	7906
Galway State	1544862	1726196	61729	4226	118178	103895	196227

Table 5, below, demonstrates that, by a considerable margin, the most common type of private household to contain children comprises a married couple with children. Nationally, there are over 2.1 million people living in households of this type. This figure represents 62.2% of all private household types containing children.

		<b>Married couple with children</b>	<b>Cohabiting couple with children</b>	<b>One parent mother with children</b>	<b>One parent father with children</b>	<b>Married and cohabiting couple with children and other persons</b>	<b>One parent, mother or father, with children and other persons</b>	<b>Two or more family units with/without other persons</b>
<b>Galway City</b>	Total private households	6,412 57.8%	877 7.9%	2465 22.2%	298 2.7%	428 3.9%	367 3.3%	244 2.2%
	All persons in households	25,888	3,255	6,565	771	2,198	1,324	1,283
<b>Galway County</b>	Total private households	22,934 69.3%	2,076 6.3%	4,943 14.9%	916 2.8%	1,062 3.2%	526 1.6%	615 1.9%
	All persons in households	95,745	7,973	13,213	2,346	5,611	1,949	3,390
<b>State</b>	Total private households	529,687 62.2%	68,979 8.1%	153,189 18%	24,731 2.9%	32,448 3.8%	20,619 2.4%	22,380 2.6%
	All persons in households	2,174,232	265,523	414,458	61,637	167,549	76,583	120,791

The percentage of private households comprising a married couple with children in the County Galway area, 69.3%, is notably above the national average. However, only 57.8% of private household types with children in Galway City comprise a married couple with children.

At 22.2%, the percentage of private households comprising a mother with children in Galway City is significantly above the national figure of 18%. Conversely, the percentage of private households comprising a mother with children in County Galway, 14.9%, is markedly below this figure.

## Traveller Population

Census 2016 recorded 1,598 people living in Galway city who identify as Irish Traveller. This represents 2.1% of the city's population. A further 2,647 people living in County Galway identify as Travellers. Behind County Longford, these are the second and third highest concentrations of Travellers by local authority area in Ireland.

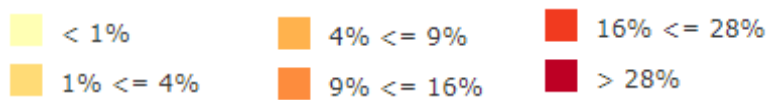
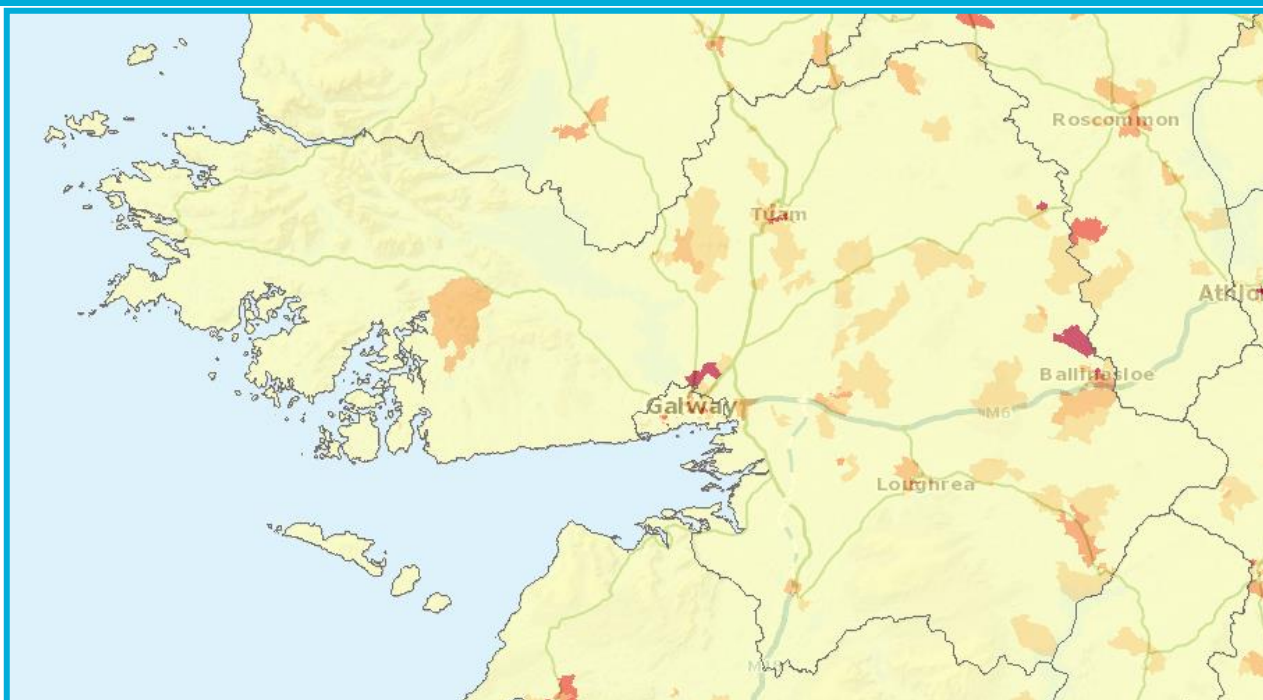
While just 1.1% of the national population of 0 to 24 year olds are Travellers, the corresponding figures for Galway City, 3.5%, and Galway County, 2.6%, are markedly higher.

**Table 6: White Irish Travellers by County and City by Age Group, 2016**

	<b>National figure (as a % of national pop per age group)</b>	<b>Galway City (as a % of City pop per age group)</b>	<b>Galway County (as a % of County pop per age group)</b>
<b>0 - 4 years</b>	4,317 1.3%	230 4.8%	373 2.9%
<b>5 - 9 years</b>	4,318 1.2%	236 5.2%	352 2.5%
<b>10 - 14 years</b>	3,678 1.1%	183 4.6%	307 2.3%
<b>15 - 19 years</b>	3,074 1%	158 3.2%	275 2.4%
<b>20 - 24 years</b>	2,631 1%	142 1.7%	234 2.9%
<b>Young Travellers (10-24 years)</b>	9,383 1%	483 2.8%	816 2.5%
<b>Young Travellers (0-24 years)</b>	18,018 1.1%	949 3.5%	1,541 2.6%
<b>Total population</b>	<b>30,987</b> <b>0.7%</b>	<b>1,598</b> <b>2.1%</b>	<b>2,647</b> <b>1.5%</b>

Map 5 demonstrates that the areas of the county with the highest proportion of Travellers are the towns of Ballinasloe, Tuam and the Ceathrú an Bhrúnaigh area on the outskirts of Galway City. Within the city, the areas with the highest proportion of Travellers are the Westside area and the Ballybane area.

Map 5: Traveller Population in Galway County, 2016



Source: AIRO, *Census 2016 Viewer*

## Principal Towns

Outside of Galway City, the county's principal towns are Tuam, Ballinasloe, Loughrea, Gort and Athenry. Connemara and the islands are also distinctive areas within the county.

## Tuam Settlement Area

In 2016, Tuam Settlement Area had a population of 8,767 people. Children and young people numbered 2,982 people and, of these, 2,331 were aged 0 to 18 years.

	<b>Couples with Children</b>	<b>Mothers with Children</b>	<b>Fathers with Children</b>
<b>Number of families</b>			
All children under 15	745	176	11
All children over 15	232	169	28
Children both under and over 15	139	51	6
<b>Total</b>	<b>1,116</b>	<b>396</b>	<b>45</b>
<b>Number of children</b>			
All children under 15	1,434	294	17
All children over 15	333	229	35
Children both under and over 15	466	145	18
<b>Total</b>	<b>2,233</b>	<b>668</b>	<b>70</b>

The total housing stock in 2016 was 4,169, of which vacant households (excluding holiday homes) numbered 603. At ED level, Tuam Urban and Tuam Rural are 'Marginally Below Average' in terms of the HP deprivation index. There are three Very Disadvantaged Small Areas within the EDs of Tuam Urban and Tuam Rural.

Less than 65% of people in Tuam Settlement Area identify having a White Irish ethnic or cultural background. Tuam is home to a large Traveller community with over 8% of the population of Tuam Settlement Area identifying as White Irish Travellers. In one Small Areas, this figure rises as high as 46.1%.

**Table 8: Ethnic or Cultural Background in Tuam Settlement Area, 2016**

White Irish	5,622	64.7%
White Irish Traveller	724	8.3%
Other White	1,443	16.6%
Black or Black Irish	129	1.5%
Asian or Asian Irish	276	3.2%
Other	136	1.6%
Not Stated	357	4.1%
<b>Total</b>	<b>8,687</b>	

### Ballinasloe Settlement Area

In 2016, Ballinasloe Settlement Area had a total population of 6,662 people. Children and young people aged 0 to 24 years numbered 2,190 people and, of these, 1,581 were aged 0 to 18 years.

**Table 9: Family Units with Children, by type of family and age of children in Ballinasloe Settlement Area, 2016**

	<b>Couples with Children</b>	<b>Mothers with Children</b>	<b>Fathers with Children</b>
<b>Number of families</b>			
All children under 15	463	117	12
All children over 15	229	115	28
Children both under and over 15	132	32	4
<b>Total</b>	<b>824</b>	<b>264</b>	<b>44</b>
<b>Number of children</b>			
All children under 15	965	196	17
All children over 15	366	162	39
Children both under and over 15	433	105	11
<b>Total</b>	<b>1764</b>	<b>463</b>	<b>67</b>

The total housing stock in 2016 was 2,945, of which vacant households (excluding holiday homes) numbered 449. Ballinasloe Urban ED is categorised as 'Marginally Below Average' on the HP deprivation index. However, the ED contains some Small Areas that are categorised as 'Disadvantaged' and 'Very Disadvantaged' with one Small Area given a score of -30.93 on the HP Deprivation Index.

Just over 71% of people in Ballinasloe Settlement Area identify having a White Irish ethnic or cultural background. A large Traveller community comprises 7.7% of the area's population. One Small Area in the Ballinasloe Urban ED recorded a Traveller population of 43.2% while another in the Killure ED recorded a Traveller population of 30.1%.



White Irish	4,740	71.1%
White Irish Traveller	512	7.7%
Other White	785	11.9%
Black or Black Irish	96	1.5%
Asian or Asian Irish	168	2.5%
Other	158	2.4%
Not Stated	150	2.3%
<b>Total</b>	<b>6,609</b>	

## Loughrea

There were 5,556 people living in the Loughrea Settlement Area at the time of the 2016 census. Children and young people numbered 1,767 people and, of these, 1,300 were aged 0 to 17 years.

	<b>Couples with Children</b>	<b>Mothers with Children</b>	<b>Fathers with Children</b>
<b>Number of families</b>			
All children under 15	435	126	15
All children over 15	145	124	37
Children both under and over 15	75	38	5
<b>Total</b>	<b>655</b>	<b>288</b>	<b>57</b>
<b>Number of children</b>			
All children under 15	835	208	23
All children over 15	239	152	43
Children both under and over 15	220	100	12
<b>Total</b>	<b>1,294</b>	<b>460</b>	<b>78</b>

The total housing stock in 2016 was 2,725, of which vacant households (excluding holiday homes) numbered 391. Loughrea Urban ED is categorised as 'Marginally Below Average' on the HP deprivation index. Within this ED, six of the Small Areas (SAs) are classified as 'Disadvantaged' and one is 'Very Disadvantaged'.

As demonstrated in Table 12, Loughrea Settlement Area is relatively multicultural with significant populations of Travellers, Asians or Asian Irish and Other White backgrounds.



White Irish	4,011	72.9%
White Irish Traveller	223	4.1%
Other White	703	12.8%
Black or Black Irish	77	1.4%
Asian or Asian Irish	189	3.4%
Other	136	2.5%
Not Stated	166	3.0%
<b>Total</b>	<b>5,505</b>	

### Gort

The total population of Gort Settlement Area in 2016 was 2,994 people. Children and young people numbered 964 people and, of these, 685 were aged 0 to 17 years.

		<b>Couples with Children</b>	<b>Mothers with Children</b>	<b>Fathers with Children</b>
<b>Number of families</b>				
All children under 15		241	63	3
All children over 15		85	56	10
Children both under and over 15		61	19	3
<b>Total</b>		<b>387</b>	<b>138</b>	<b>16</b>
<b>Number of children</b>				
All children under 15		417	94	4
All children over 15		135	76	15
Children both under and over 15		171	54	7
<b>Total</b>		<b>723</b>	<b>224</b>	<b>26</b>

The total housing stock in 2016 was 1,357, of which vacant households (excluding holiday homes) numbered 150. Gort ED is categorised as 'Marginally Below Average' on the HP deprivation index. Two Small Areas within the ED are categorised as 'Disadvantaged' and one is categorised as 'Very Disadvantaged' (scoring -23.64).

The population of Gort is notable for its multicultural make-up. Specifically, the town is known for its large Brazilian population. At the time of the 2016 census, 9.1% of people living in the Gort Settlement Area recorded their Ethnic or Cultural Background as 'Other'. Of the area's 2,294 residents, 902 were speakers of a language other than English or Irish.

**Table 14: Ethnic or Cultural Background in Gort Settlement Area, 2016**

White Irish	1,820	62%
White Irish Traveller	63	2.1%
Other White	482	16.4%
Black or Black Irish	112	3.8%
Asian or Asian Irish	59	2%
Other	267	9.1%
Not Stated	134	4.6%
<b>Total</b>	<b>2,937</b>	

### Athenry

In 2016, the Athenry Settlement Area had a total population of 4,445 people. Athenry has experienced a high rate of growth during the period between 2011 and 2016. During this 5 year period, the population of Athenry grew by 13.3%. This is significantly higher than the corresponding figure for County Galway (2.4%) and the national average (3.8%).

There were 1,610 children and young people in the Athenry Settlement area in 2016. Of these, 1,274 were aged 0 to 17 years (36.2%).

**Table 15: Family Units with Children, by type of family and age of children in Athenry Settlement Area, 2016**

	Couples with Children	Mothers with Children	Fathers with Children
<b>Number of families</b>			
All children under 15	429	102	6
All children over 15	102	77	20
Children both under and over 15	91	21	2
<b>Total</b>	<b>622</b>	<b>200</b>	<b>28</b>
<b>Number of households</b>			
All children under 15	844	169	10
All children over 15	157	104	25
Children both under and over 15	267	62	5
<b>Total</b>	<b>1,268</b>	<b>335</b>	<b>40</b>

The total housing stock in 2016 was 1,824, of which vacant households (excluding holiday homes) numbered 140. Athenry is categorised as 'Marginally Above Average', scoring 3.31, on the HP deprivation index. Two of its 20 SAs are categorised as 'Marginally Below Average' and a further two are categorised as 'Disadvantaged'.

Almost 72% of people in the Athenry Settlement Area identify as White Irish. The next largest group, 16.7%, identify as 'Other White'.

White Irish	3,137	71.8%
White Irish Traveller	156	3.6%
Other White	730	16.7%
Black or Black Irish	85	1.9%
Asian or Asian Irish	65	1.5%
Other	110	2.5%
Not Stated	90	2.1%
<b>Total</b>	<b>4,373</b>	

### Connemara, the Gaeltacht and the Islands

Connemara is a large rural area to the west of Galway City. The Connemara Local Electoral Area extends westward from Lough Corrib as is bordered by the Atlantic Coast to the west and south. In 2016, the population of the Connemara Electoral Area was 38, 532 people. The cohort aged under 18 years comprised 8,314 people and the total population of children and young people, aged 0 to 24 years, numbered 12,134.

At 31.5%, the proportion of children and young people living in Connemara is significantly lower than the in the county, 34%, or at national level, 33%. Coupled with this, the area is characterised by its remote location and low population density, making it difficult for young people to gather and connect.<sup>13</sup>

	<b>Couples with Children</b>	<b>Mothers with Children</b>	<b>Fathers with Children</b>
<b>Number of families</b>			
All children under 15	2,409	496	35
All children over 15	2,015	820	179
Children both under and over 15	861	141	8
<b>Total</b>	<b>5,285</b>	<b>1,457</b>	<b>222</b>
<b>Number of children</b>			
All children under 15	5,164	740	58
All children over 15	3,421	1,201	249
Children both under and over 15	2,682	385	22
<b>Total</b>	<b>11,267</b>	<b>2,326</b>	<b>329</b>

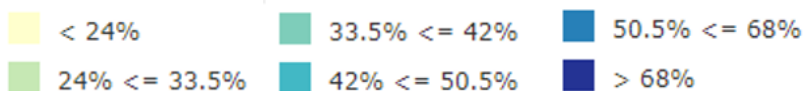
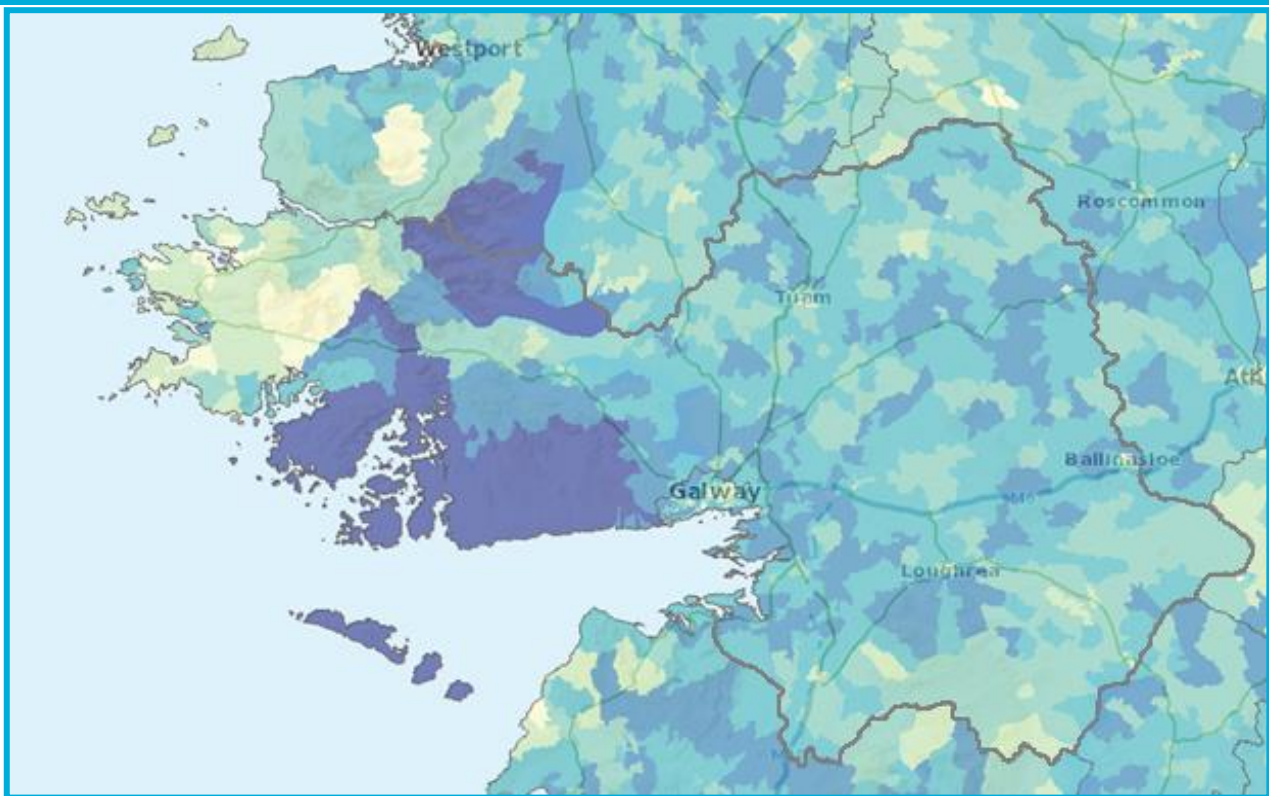
<sup>13</sup> Perez-Goodbody, R. (2019) *Evidence Baseline Report on Children and Young People in Galway and Roscommon: A Needs-Analysis to Inform Youth Work Provision*. Galway: GRETB.

Over 90% of people in the Connemara Local Electoral Area identify as having a White Irish ethnic or cultural background.

A band of relatively affluent Small Areas is found between Galway City and the entrance to Connemara proper in the EDs of Galway Rural and Maigh Cuilinn. However, greater levels of relative deprivation are found in more peripheral areas along the south and west coast. Small Areas in the EDs of An Turlach and Garmna are categorised as 'Very Disadvantaged' on the HP deprivation index.

Just under half of all Galwegians aged 3 or over can speak Irish (49%). This figure is notably higher than the national average of 40%. Galway is home to the single largest and most populous Gaeltacht area in the country. It encompasses a large part of Connemara as well as parts of Galway City. In 2016, 9,445 people living in the Galway Gaeltacht spoke Irish on a daily basis.

**Map 6: Percentage of Population who can speak Irish**



Source: AIRO, *Census 2016 Viewer*

Census 2016 recorded a population of 3,564 people living on 23 different islands located in County Galway. The largest off-shore island populations were on the predominantly Irish speaking Aran Islands of Inis Mór, Inis Oírr and Inis Meáin with 762 people, 281 people and 183 people, respectively.

## Active and Healthy, Physical and Mental Wellbeing

In 2016, the proportion of children and young people in the Galway County area with very good health was higher than the corresponding national proportion across each age bracket. However, the opposite was the case in Galway City. Whereas 82.4% of children and young people experienced very good general health in the county, this figure fell to 72.9% in the city. This is significantly lower than the nation figure of 80.3%.

**Table 18: Children and Young People in Very Good Health by City and County, 2016**

	National Figure	City Figure (with % of County Pop per age group)	County Figure (with % of County Pop per age group)
<b>Very Good General Health</b>			
<b>0 to 9</b>	567,065 82.5%	7,240 77.9%	23,290 85%
<b>10 to 14</b>	269,112 84.2%	3,120 79.1%	11,285 85.1%
<b>15 to 19</b>	239,203 79%	3,556 71.1%	9,200 79.3%
<b>20 to 24</b>	195,408 71.4%	5,559 65.6%	5,833 73%
<b>Total 0 to 24</b>	<b>1,270,788</b> 80.3%	<b>19,475</b> 72.9%	<b>49,608</b> 82.4%

### Infant Mortality Rate<sup>14</sup>

In 2019, the Galway County area experienced a mortality rate of 3.4 deaths per 1,000 of those aged under 1 year. This is slightly above the national average of 3.2 deaths per thousand. There were no infant deaths registered in the city area during this time. Given that the numbers under consideration are small, the Infant Mortality Rate can be subject to considerable fluctuation.

### Babies Born weighing less than 2,500 grams<sup>15</sup>

In 2016, 5.3% of babies born in Galway weighed less than 2,500 grams. This compares positively to the national average of 5.9%.

<sup>14</sup> Central Statistics Office (2020) *Vital Statistics Yearly Summary 2019* [online] available at: <https://www.cso.ie/en/releasesandpublications/ep/p-vs/vitalstatisticsyearlysummary2019/>

<sup>15</sup> Department of Children and Youth Affairs (2016) *State of the Nation's Children 2016*. Dublin: Government Publications.

## Immunisation Uptake<sup>16</sup>

The latest available data relating immunisation uptake shows Galway to have a higher than average uptake rate. In quarter 3, 2019, the rate of immunisation for MMR1 (one dose of vaccine against measles, mumps and rubella) at 24 months in Galway was 93%. The corresponding figure at national level was 89%. In Q2, 2017, the rate of immunisation for MENC3 (three doses of vaccine against meningococcal group C) in Galway was 95%. The corresponding figure at national level was 87%.

## Breastfeeding<sup>17</sup>

The rate of exclusive breastfeeding in Galway is 44.8%. This figure is significantly lower than the corresponding national figure of 49.5%. However, the rate of combined breast and artificial feeding, 16.1%, is above the national average of 10.4%. Consequently, the rate of exclusively artificial feeding in the county, 39.1%, is slightly lower than the national average of 40.1%.

## Disability

Children aged 0 to 14 years are slightly less likely to have a disability, long-lasting condition or difficulty in Galway City (5.7%) or the Galway County area (5%) than their counterparts nationally (5.9%). However, the proportion of older children and young adults with a disability, long-lasting condition or difficulty in Galway City, 8%, is significantly higher than the national average of 7.1%.

**Table 19: Population With a Disability by Age Group in County and City, 2016**

		National Figure	City Figure (as a % of city pop per age group)	County Figure (as a % of city pop per age group)
Disabilities / long-lasting conditions or difficulties	<b>0 to 14</b>	59,086 5.9%	754 5.7%	2,052 5%
	<b>15 to 19</b>	28,512 9.4%	519 10.4%	952 8.2%
	<b>20 to 24</b>	24,953 9.1%	871 10.3%	668 8.4%
	<b>Total 0 to 24</b>	<b>112,551</b> 7.1%	<b>2,144</b> 8%	<b>3,672</b> 6.1%

<sup>16</sup> Health Protection Surveillance Centre (2019) *Summary Immunisation Uptake Statistics Data up to Q3 2019* [online] Available at <https://www.hpsc.ie/a-z/vaccinepreventable/vaccination/immunisationuptakestatistics/immunisationuptakestatisticsat12and24monthsofage/VPD-Quarterly-Immunisation-Uptake-Statistics-Summary-12and24.pdf>

<sup>17</sup> Healthcare Pricing Office, HSE (2018) *Perinatal Statistics Report 2016*. [online] Available at: [http://www.hpo.ie/latest\\_hipe\\_nprs\\_reports/NPRS\\_2016/Perinatal\\_Statistics\\_Report\\_2016.pdf](http://www.hpo.ie/latest_hipe_nprs_reports/NPRS_2016/Perinatal_Statistics_Report_2016.pdf)

## Self-harm<sup>18</sup>

In 2018, the male rate of self-harm in the combined Galway City and County area (previously known as the Galway Local Health Office area) stood at 163 per 100,000 population. During this time, the national average rate for men was 193 per 100,000. During this time, the female rate of self-harm stood at 256 per 100,000 population in Galway compared to a national female average of 229 per 100,000.

Figures relating to self-harm at county level are not disaggregated by age-group. However, national figures indicate the highest rate of self-harm for young women is among 15-19 year-olds while the peak rate for men is among 20-24 year-olds.

---

<sup>18</sup> National Self Harm Registry Ireland (2019) *Annual Report 2018* [online] Available at: <https://www.nsrif.ie/wp-content/uploads/2019/10/NSRF-National-Self-Harm-Registry-Ireland-Annual-Report-2018-for-website.pdf>



## Achieving full Potential in all areas of Learning and Developing

There were 30,050 primary level students and 20,056 second level students in Galway City and County in 2016. A further 9,977 people from Galway were full-time students at third level.

	National Figure (as % of national pop)	City Figure (as % of city figure)	County figure (as % of county figure)
Number of people in third level education	160,178 3.36%		9,977 5.6%
Number of primary school students	553,380 11.62%	7,645 9.72%	22,405 12.49%
Number of secondary school pupils	378,003 7.94%	6,711 8.53%	13,345 7.44%

Nationally, there were 16.1% of children and young people whose highest level of education was Upper Second Level. The corresponding figures for Galway City and County were 7.7% and 17.1% respectively. At 2%, the percentage of young people whose highest level of education was Lower Second Level Education in Galway City was half the national figure of 4%.

	National Figure	City Figure (as % of city pop per age group)	County Figure (as % of county pop per age group)
Young people aged 20-24 years whose highest level of education is Upper Second Level Education	44,147 16.1%	655 7.7%	1,365 17.1%
Young people aged 20-24 years whose highest level of education is Lower Second Level Education	10,960 4%	167 2%	337 4.2%

Across Galway City and County, the mean percent of 20 day absences at primary school level, 10%, was slightly lower than the national figure of 10.9%. However, at post primary school level, the mean percent of 20 day absences in the City and County was 19.5%. This is considerably higher than the national figure of 15.8%.<sup>19</sup>

<sup>19</sup> Miller, D. (2018) *School Attendance Data from Primary and Post-Primary Schools 2016/17 [under Section 21(6) of the Education (Welfare) Act, 2000]: Analysis and Report to the Child and Family Agency*. [online] Available at: [https://www.tusla.ie/uploads/content/AAR\\_16-17.pdf](https://www.tusla.ie/uploads/content/AAR_16-17.pdf)

The retention rate to Leaving Certificate level for those who entered second level education in 2012 and completed their leaving certificate in 2017 or 2018 is lower in Galway City, 90.2%, and Galway County, 93%, than the national rate of 94.4%.<sup>20</sup>

While the retention rate to Leaving Certificate for children from the Traveller Community is not available at county level, the *National Traveller and Roma Inclusion Strategy* states that only 13% of Traveller children complete second level education (p.11).<sup>21</sup>

---

<sup>20</sup> Department of Education and Skills (2019) *Retention Rates of Pupils in Second Levels Schools: 2012 Cohort* [online] Available at: <https://www.education.ie/en/Publications/Statistics/retention/retention-rates-of-pupils-in-second-level-schools-2012-entry-cohort.pdf>

<sup>21</sup> Department of Justice and Equality (2017) *National Traveller and Roma Inclusion Strategy*. Dublin: Department of Justice and Equality.

## Safe and Protected from Harm

At the end of February 2020, there were 1,235 cases open to the Child Protection and Welfare Social Work unit in the Galway and Roscommon Tusla Service Area. This equates to 1.55% of the total child population, 0 – 18 years, in this service area. This is significantly lower than the corresponding national figure of 1.95%. Notably, the proportion of open cases awaiting the allocation of a social worker in the Galway and Roscommon area, 0.07%, is six times lower than the national average of 0.42%.

There were 42 children on the Child Protection and Notification System (CPNS) in the Galway and Roscommon Tusla Service Area at the end of Q4, 2019. The Child Protection Notification System (CPNS) records children who have been identified as being at ongoing risk of significant harm and are, or have been, subject to a Child Protection Plan.

At 0.99%, the proportion of cases open to Tusla Family Support Services in the Galway and Roscommon Service Area is also significantly lower than the corresponding national figure of 1.54%. The number of Meitheal processes requested in the region is in line with the national average.<sup>22</sup> However, the proportion of Meitheal process requests progressing to the next stage of implementation in Galway (86%) is very high when compared to other Tusla areas.<sup>23</sup>

**Table 22: Tusla Cases in Galway and Roscommon Service Area** <sup>24</sup>

	<b>Galway &amp; Roscommon</b> (as % of G&R pop < 18 yrs)	<b>National</b> (as % of national pop < 18 yrs)
No. of Children (aged 0 – 18 years) Galway & Roscommon, Census 2016	79,912 100%	1,190,502 100%
No. of Cases Open to Family Support Services, end Feb 2020	793 0.99%	18,343 1.54%
No. of Meitheal Processes Requested, 2019	147 0.18%	2,330 0.19%
No. of Cases Open to Child Protection & Welfare Services, end Feb 2020	1,235 1.55%	23,190 1.95%
No. of Children on Child Protection Notification System, end Q4 2019	42 0.05%	876 0.07%
No. of Open Cases awaiting Allocation of Social Worker, end Feb 2020	54 0.07%	5,048 0.42%
No. of Young People in Aftercare, end Q4 2019	125 0.16%	2,108 0.18%

<sup>22</sup> Meitheal is a case co-ordination process for families with additional needs who require multi-agency intervention but who do not meet the threshold for referral to the Social Work Department under Children First.

<sup>23</sup> Tusla (2020) [Meitheal Biannual Returns Dataset], unpublished

<sup>24</sup> Government of Ireland (2020) *Tusla Data Hub: Performance and Data Activity* [online] Available at: <https://data.tusla.ie/apart> from no. of Children, aged 0 – 18 years ,Galway & Roscommon: CSO StatBank)

Table 23, below, illustrates that the proportion of children in care in the Galway and Roscommon Service Area, 0.44%, is below the national average of 0.5%. A clear majority of children in care, both nationally, 65%, and in the Galway and Roscommon Service Area, 78%, are placed in General Foster Care. However, despite the benefits associated with kinship care arrangements, the ratio of children in General Foster Care to Relative Foster Care is significantly higher in the Galway and Roscommon area (4:1) than it is nationally (2.5:1).

**Table 23: Children in Care Galway and Roscommon Service Area <sup>25</sup>**

	<b>Galway &amp; Roscommon (as % of G&amp;R pop &lt; 18 yrs)</b>	<b>National (as % of national pop &lt; 18 yrs)</b>
<b>No. of Children (aged 0 – 18 years) Galway &amp; Roscommon, Census 2016</b>	79,912	1,190,502
<b>Forster Care, end of Feb 2020</b>	274	3,893
<b>Relative Foster Care, end of Feb 2020</b>	68	1,555
<b>Residential General Care, end of Feb 2020</b>	7	388
<b>Residential Special Care, end of Feb 2020</b>	1	14
<b>Other Placement Type, end of Feb 2020</b>	2	105
<b>No in Care (all placement types), End of Feb 2020</b>	352	5,955
	<b>0.44%</b>	<b>.50%</b>

Garda Youth Diversion Projects are community-based, multi-agency, youth crime prevention initiatives. They work primarily with 12-18 year olds who have been involved in, or are at risk of becoming involved in, anti-social or criminal behaviour. The projects aim to deter crime and anti-social behaviour while promoting personal development, sense of community and improving employability prospects. In 2017, 582 referrals were made to Garda Youth Diversion Projects in the Galway Garda Division. This accounted for 5.5% of the 10,607 referrals made nationally.

<sup>25</sup> Government of Ireland (2020) *Tusla Data Hub: Performance and Data Activity* [online] Available at: <https://data.tusla.ie/apart> from no. of Children, aged 0 – 18 years ,Galway & Roscommon: CSO StatBank)

## Economic Security and Opportunity

Communities experiencing higher levels of disadvantage require additional supports and services to safeguard the health and wellbeing of children.<sup>26</sup>

Galway City is the most affluent local authority area within the West Region and the third most affluent local authority area in the country. While the city's 2016 HP Deprivation Index Score<sup>27</sup> for 2016, 4.9, is lower than the 5.2 awarded in 2011, the city is categorised as marginally above average. The most affluent areas are situated towards the west of the city, whereas parts of the city centre and city east are more disadvantaged.

County Galway is the second most affluent local authority area within the West Region and is not characterised by particular extremes of affluence or deprivation. However, of its 741 small areas, 73 are classified as disadvantaged and one as extremely disadvantaged. There are some differences in the relative affluence and deprivation between various parts of the county. The most affluent parts in County Galway are situated in the wider environs of Galway city, particularly to the West of the city. The most disadvantaged parts of the county are along the isolated west coast and in Ballinasloe.

**Table 24: Relative HP Deprivation Index Score**

	<b>2006</b>	<b>2011</b>	<b>2016</b>
<b>Galway City</b>	2.7	5.2	4.9
<b>Galway County</b>	-0.3	0	0.4

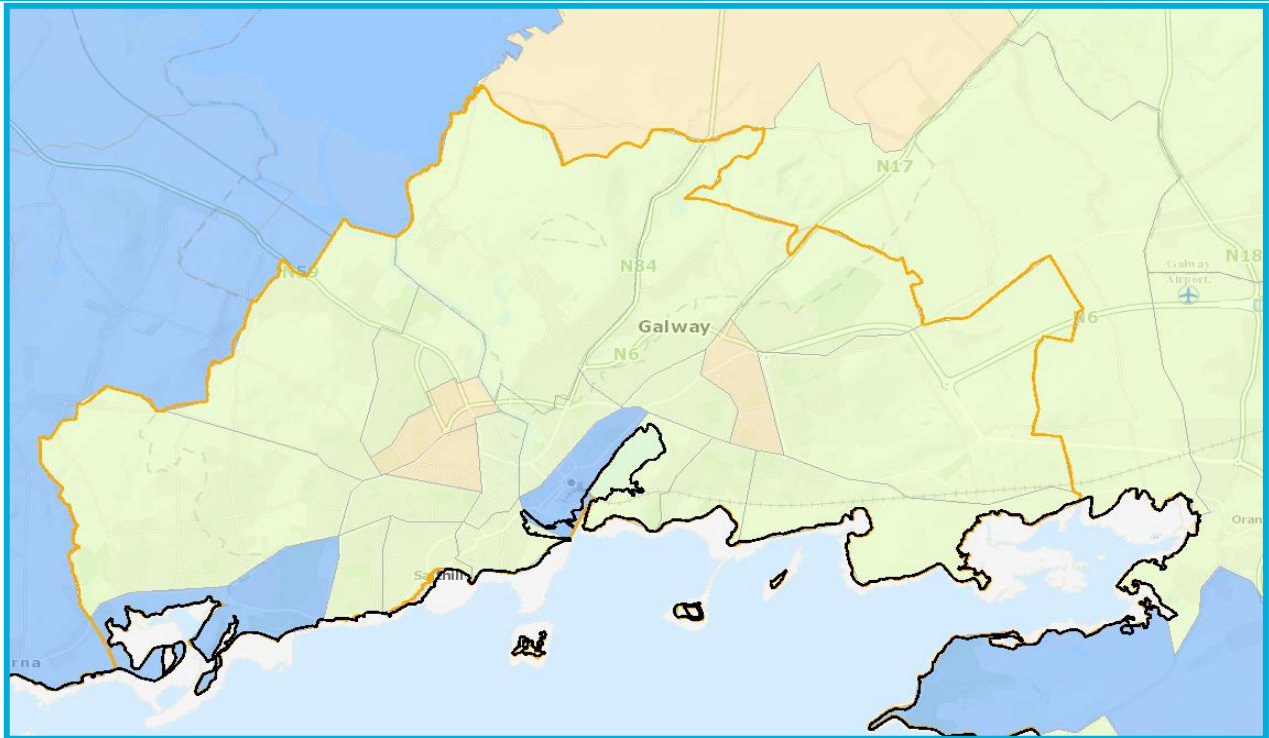
Source: Pobal, 2018

Of the 22 Electoral Divisions (EDs) in Galway City, none of them are categorised as disadvantaged. The EDs with the lowest HP deprivation scores are: Newcastle (-7.64); Shantalla (-4.20); and Mervue (-3.37).

<sup>26</sup> Bywaters et.al (2016) *'The evidence between poverty, child abuse and neglect: an evidence view'* London: JRF

<sup>27</sup> The Pobal HP Deprivation index measures the relative affluence or disadvantage of all 18,488 small areas (SA) of the 2006, 2011 and 2016 Censuses. See more: <http://trutzhaase.eu/deprivation-index/overview/>

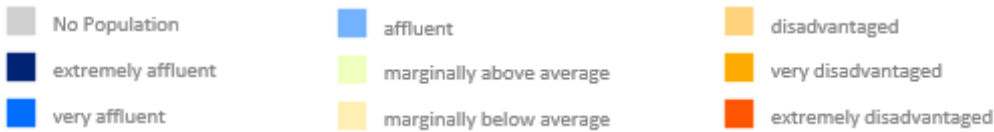
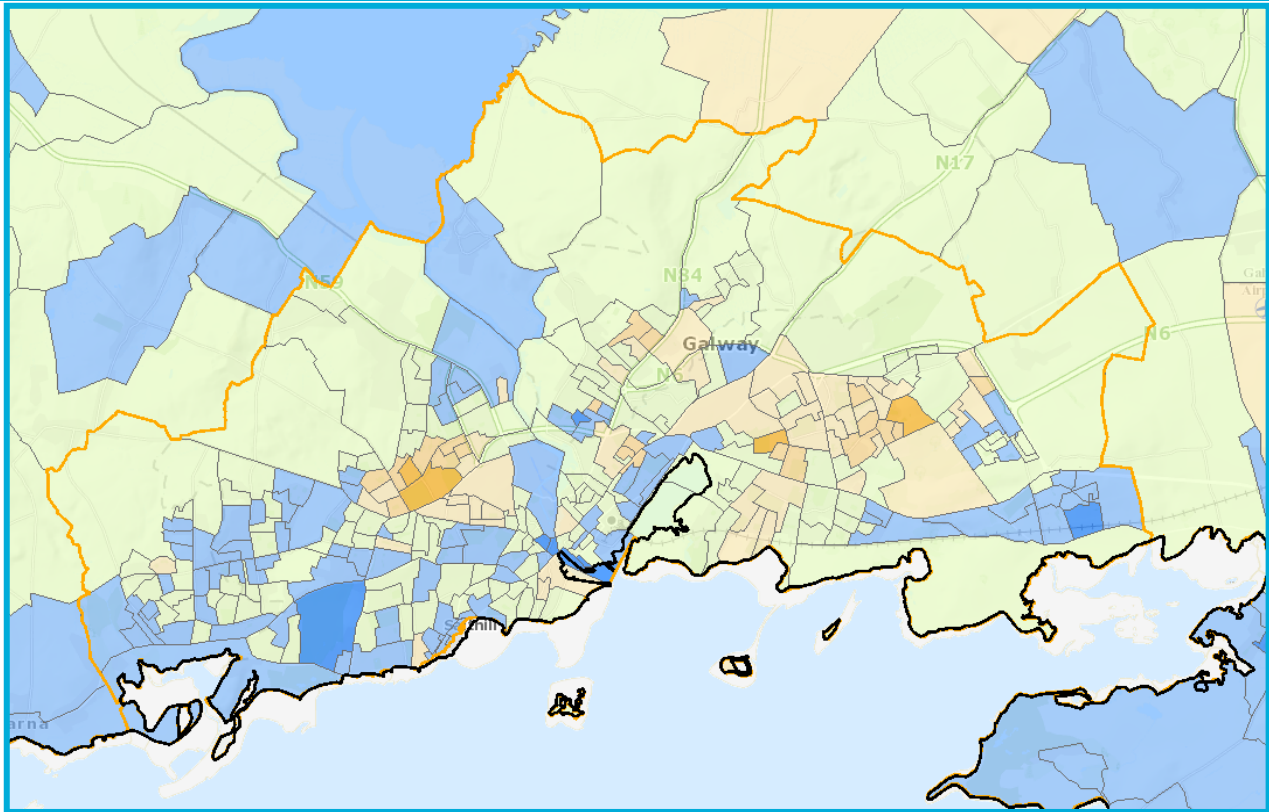
Map 7: Galway City HP Index Scores by Electoral Division (ED), 2016



Source: Pobal, 2018

When disaggregated to Small Area (SA) level, the data indicates that there are four SAs in Galway City which are classified as 'Very Disadvantaged'. These fall within the EDs of Dangan (-22.29); Ballybaan (-20.53); Wellpark (-20.33); and Newcastle (-20.06). There are also 22 SAs which fall within the 'Disadvantaged' category of the HP deprivation score.

**Map 8: Galway City HP Index Scores by Small Area (SA), 2016**



Source: Pobal, 2018

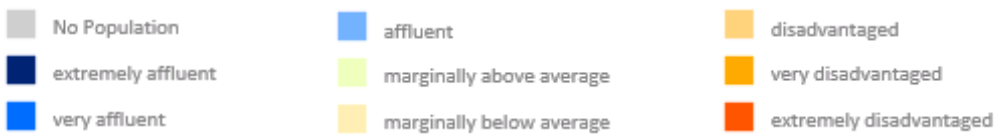
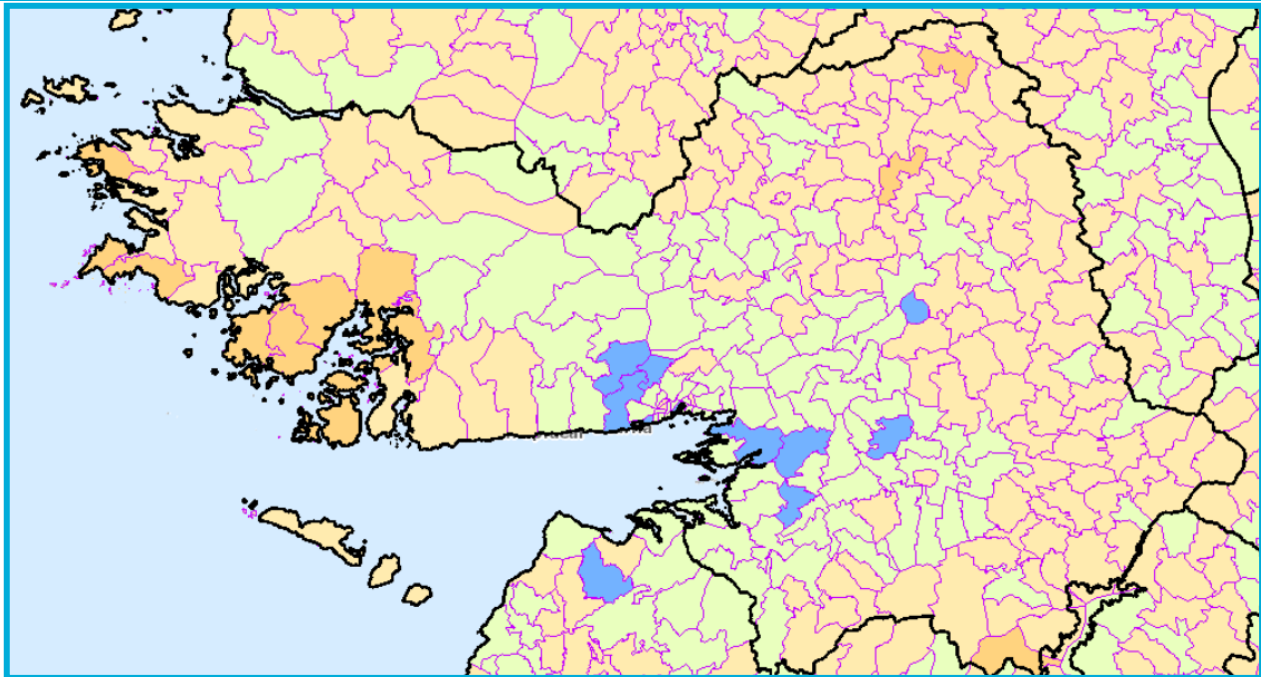
Of the 214 Electoral Divisions (EDs) in the Galway County area, 13 are categorised as disadvantaged. The EDs with the highest HP relative deprivation scores are:

**Table 25: Disadvantaged Electoral Divisions in Galway County, 2016**

ED Name	HP Deprivation Index Score	ED Name	HP Deprivation Index Score	ED Name	HP Deprivation Index Score
Owengowla	-17.11	Camus	-14.51	Knockboy	-13.01
Lettermore	-16.98	Skannive	-13.77	Cloonkeen	-12.55
Doonloughan	-16.73	Sillerna	-13.60	Bunowen	-11.78
Gorumna	-16.43	Turlough	-13.11	Coos	-10.45
				Kilcroan	-10.13



Map 9: Galway City HP Index Scores by Electoral Division (ED), 2016



Source: Pobal, 2018

When disaggregated to Small Area (SA) level, the data indicates that there is one SA in the county area categorised as ‘Extremely Disadvantaged’ and a further 11 SAs are categorised as ‘Very Disadvantaged’.

Table 26: Extremely Disadvantaged and Very Disadvantaged Small Areas (SAs) in Galway County, 2016

	Small Area Identifier	Located in Electoral Division (ED)	HP Deprivation Index Score
Very Disadvantaged SAs	67017002	Ballinasloe Urban	-22.33
	67017020	Ballinasloe Urban	-28.75
	67017021	Ballinasloe Urban	-23.13
	67017023	Ballinasloe Urban	-21.31
	67101001	Gort	-23.64
	67102005	Garma	-21.02
	67170008	Loughrea Urban	-20.29
	67211004	Tuam Rural	-25.62
	67211024	Tuam Rural	-22.21
	67212003	Tuam Urban	-26.43
	067214002/5	An Turlach	-26.00
Extremely Disadvantaged SAs	067017010	Ballinasloe Urban	-30.93



## Youth Employment

The Live Register is used to provide a monthly series of the numbers of people (with some exceptions) registering for Jobseekers Benefit (JB) or Jobseekers Allowance (JA) or for various other statutory entitlements at local offices of the Department of Social Protection. The Live Register includes part-time workers (those who work up to three days per week), seasonal and casual workers entitled to JB and JA. The Live Register offers data disaggregated by age group at a detailed geographic level.

Table 27 below illustrates that at the end of 2020 young people in Galway City and County comprised 10.2% of all people on the Live Register. This was significantly lower than the national average of 11.1%. Within Galway City only, the proportion was even lower at just 9.9%.

Young people as a proportion of all those on the Live Register varied considerably across the county. While young people comprised just less than 7% in Gort and Clifden, the corresponding figures for Loughrea and Ballinasloe were 11.1% and 13.7% respectively.

State	Total on Live Register	Under 25 Years	Under 25s as a % of total on LR
State	189,860	21,001	11.1
Galway City and County	9,569	975	10.2
Galway City Only	4,776	474	9.9
Galway County Only	4,793	501	10.5
<i>Of which</i>			
<i>Ballinasloe</i>	1,123	154	13.7
<i>Clifden</i>	590	41	6.9
<i>Gort</i>	725	48	6.6
<i>Loughrea</i>	975	108	11.1
<i>Tuam</i>	1,380	150	10.9

<sup>28</sup> Central Statistics Office (2020) Live Register: table LRM07 [online] Available here: <https://data.cso.ie/table/LRM07>

## Connected, Respected and Contributing to their World

Galway City is the most multi-cultural city in the country with just short of one in every five people living in the city, 18.6%, recorded as non-Irish nationals in Census 2016. This is markedly higher than the national figure of 11.6%. The corresponding figure for the county was 8.4%. Alongside this international flavour, the culture of the city reflects a rich Traveller heritage.

### Population speaking languages other than English and Irish at home

The population of Galway City, at 78,668 people, is considerably smaller than the population of County Galway, 179,390 people. Despite this, there are more people speaking a language other than English or Irish at home in the city (15,677) than there are in the county (15,546).

A further noteworthy characteristic of the data presented in Table 28 concerns the prevalence of Portuguese speakers in County Galway. There are more than twice as many Portuguese speakers in County Galway (1,212) than in Galway City (594).

Table 28: Speaking a Language other than English or Irish at Home by language, 2016

	All	Polish	French	Romanian	Lithuanian	Spanish	Russian	Portuguese
Galway City	15,677	4,273	1,231	623	714	883	627	594
Co. Galway	15,546	4,224	1,919	346	645	681	343	1,212
State	612,018	135,895	54,948	36,683	35,362	32,405	21,707	20,833

### Young Carers

Both Galway City (0.97%) and Galway County (0.87%) have a slightly higher percentage of young carers, aged 0-24 years, than the national average of 0.83%. At the time of the 2016 census, there were 81 children aged 0 to 9 years undertaking a caring role in Galway. The census defined a caring role as providing 'regular unpaid personal help for a friend or family member with a long-term illness, health problem or disability'.<sup>29</sup>

<sup>29</sup> Central Statistics Office (2016) Census of Population of Ireland Household Form [online] Available here: [https://www.cso.ie/en/media/csoie/census/census2016/2016censusforms/65995\\_English\\_Household\\_2016\\_New\\_Version\\_Do\\_Not\\_Complete.pdf](https://www.cso.ie/en/media/csoie/census/census2016/2016censusforms/65995_English_Household_2016_New_Version_Do_Not_Complete.pdf)

Table 29: Young Carers in Galway City and County, 2016

	National Figure	Galway City (as a % of City pop by age group)	Galway County (as a % of County pop by age group)
0 - 4 years	687 0.21%	18 0.38%	12 0.09%
5 - 9 years	948 0.27%	13 0.29%	38 0.26%
10 - 14 years	2,165 0.68%	25 0.63%	109 0.82%
15 - 19 years	4,228 1.4%	66 1.32%	193 1.66%
20 - 24 years	5,119 1.87%	137 1.62%	171 2.14%
young carers (10-24 years)	11,512 1.28%	228 1.31%	473 1.44%
young carers (0-24 years)	13,147 0.83%	259 0.97%	523 0.87%

### Direct Provision Centres

There are two International Protection Accommodation Centres in Galway City; The Eglinton in Salthill and The Great Western in Eyre Square. In May 2019, there were 85 children living in The Eglinton. There were no children living in The Great Western.

### Internet Connectivity

Just under four out of every five households, 78%, in Galway city had a broadband connection in 2016.<sup>30</sup> In comparison, just 62% of households in the county area had broadband connection at this time. However, rates of broadband connectivity was not uniform across the city with just 23 out of 86 households, or 27%, in one Small Area in the Wellpark Electoral Division having a broadband connection.

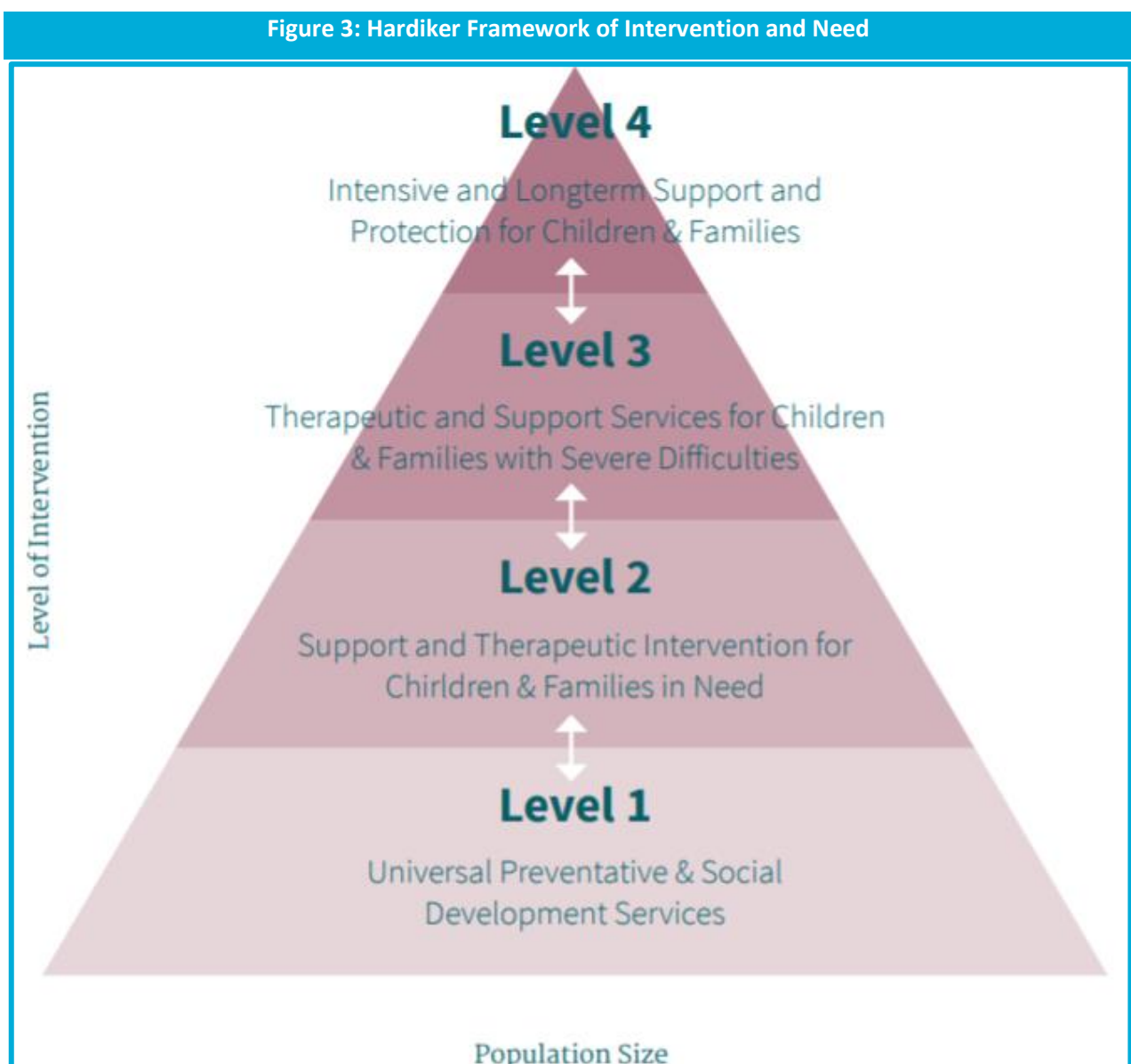
<sup>30</sup> Central Statistics Office (2017) *Census 2016 StatBank Table E1060* [online] Available at: <https://data.cso.ie/table/E1060>

## Section 3: Overview of Services to Children and Families in Galway

This section provides an overview of the main services provided to children, young people and their parents by Galway CYPSC member organisations and its working partners.

Services are categorised by theme. Organisations may be listed more than once where their services span multiple themes.

Reference to the Hardiker Model is presented to reflect the level of intervention which services are providing from Level 1 being universal preventative and social development services to Level 4 being intensive and long-term support and protection.<sup>31</sup>



Source: The Institute of Public Health and the Centre for Effective Services, 2016

<sup>31</sup> Hardiker, P., Exton, K. and Barker, M (1991) *Policies and practices in preventive child care*. Aldershot: Avebury

## Coordinating Structures

Co-ordinating and Decision-Making Structures	Objective of Structure
<b>Galway Children and Young People's Services Committee</b>	To achieve positive outcomes for children and young people in Galway City and County. CYPSC works to realise the five national outcomes as set in 'Better Outcomes, Brighter Futures' through the co-ordination, development and delivery of services, underpinned by enhanced interagency co-operation.
<b>Child and Family Support Networks</b> (City North, City East, Doughiska, Galway West, Connemara, North County Galway, Loughrea, Gort, Ballinasloe and Athenry areas)	CFSNs take a localised, area based, approach to ensure families experience services as easily accessible and integrated at the front line in their own communities. Local CFSNs consist of all services that play a role in the lives of children and families in a given area. This includes local statutory, voluntary community services.
<b>Galway City Local Community Development Committee</b> <i>and</i> <b>County Local Community Development Committee</b>	The committees prepare the community elements and review the economic elements of six-year Local Economic and Community Plans (LECP). The LCDCs also coordinate, manage and oversee the implementation of local community development programmes including the government's Social Inclusion and Community Activation Programme (SICAP).
<b>Galway City Community Network</b> <i>and</i> <b>Galway County Public Participatory Forum</b>	To network local community and voluntary groups and to support civil society / community representation in the decision making structures of Galway City and County.
<b>Healthy Galway City</b> <i>and</i> <b>Healthy County Galway</b>	Supported by LCDCs, Healthy County Galway and Healthy Galway City promote engagement, collaboration and the creation of long-term innovative partnerships to improve health and wellbeing outcomes.
<b>Western Region Drug and Alcohol Task Force (WRDATF)</b>	To research, develop and implement a coordinated, regionally appropriate response to substance misuse in the West.
<b>Galway Planet Youth Steering Committee</b>	Supported by the WRDATF, the committee coordinates delivery of primary prevention initiatives informed by Planet Youth data in Galway to prevent children and adolescents from initiating drug use.
<b>Galway Childcare Committee</b>	To coordinate the implementation of national childcare policy and programmes at local level on behalf of the Department of Children and Youth Affairs.
<b>Connecting for Life Galway, Mayo and Roscommon Steering Committee</b>	To coordinate, oversee and report upon actions outlined in the Connecting for Life suicide prevention and self-harm plan for the region.
<b>Údarás na Gaeltachta</b>	Is é caomhnú agus láidriú na Gaeilge mar theanga bheo an bunchuspóir atá le polasaí Údarás na Gaeltachta. Déanann an tÚdarás é seo trí fhorbairt fiontraíochta agus tionscnaimh chruthaithe fostaíochta a chothú agus a mhaoiniú, chomh maith le tacaíocht a thabhairt d'imeachtaí pobail, cultúrtha agus teangabhunaithe.

## Health and Social Services

Organisation	Service	Statutory or Voluntary	Universal, Targeted or Both
<p><b>Health Service Executive (HSE)</b></p> <p>The HSE provides all of Ireland's public health services in hospitals and communities across the country. Its vision is for a healthier Ireland with a high quality health service valued by all.</p>	<b>Primary Care Networks</b> x 9	Statutory	Universal
	<b>Public Health Nurses:</b> Provide a range of nursing services in the community. They are often the first point of contact for people to access a range of HSE services.	Statutory	Universal
	<b>HSE Counselling in Primary Care:</b> Provides up to 8 counselling sessions for adults with a medical card experiencing mild to moderate difficulties.	Statutory	Targeted (Hardiker Level 2)
	<b>Community Medical Doctors</b> carry out: Child health and developmental assessments and take referrals from Public health nurses and other services e.g. Early Intervention & Paediatrics; School Immunisation program in primary and secondary schools; Oversight of primary immunisation programme; Assessment of disability grants e.g. Primary Medical Certificates; Fostering and Adoption assessments.	Statutory	Universal
	<b>Dentistry:</b> Including emergency services for children aged 0 - 16 years	Statutory	Universal
	<b>Community Nutrition and Dietetics Service:</b> Dietary assessment, advice and support for children and young people.	Statutory	Universal and Targeted (Hardiker Lvs 2&3)
	<b>Addiction Services:</b> counselling (including addiction counselling for young people) and outreach work	Statutory	Targeted (Hardiker Lvs 2 & 3)
	<b>Health Promotion:</b> Promotion in relation to key areas of physical activity, obesity, alcohol, smoking, sexual health and health inequalities are addressed across different population groups, including children	Statutory	Universal
<b>Galway University Hospitals Group</b> provides medical services to children at St. Bernadette's Paediatric Unit which has thirty three bed spaces. Patients from Galway city and county and the borders of County Mayo, Roscommon and Clare are treated at the Unit and range in age from one day old to fourteen years old.	Statutory	Universal	

Organisation	Service	Statutory or Voluntary	Universal, Targeted or Both
	<b>Speech and Language Therapy:</b> Service for children, young people and adults with speech and language difficulties including parent advice clinics	Statutory	Targeted (Hardiker Lvs 1 & 2)
	<b>Occupational Therapy:</b> Assessment, intervention, advice/consultation for children and young people presenting with fine and gross motor difficulties, parent advice clinics	Statutory	Targeted (Hardiker Lvs 2 & 3)
	<b>Audiology:</b> The newborn hearing screening programme works to pick up infants with hearing loss at birth. Audiology services. Help with hearing loss is free for all children.	Statutory	Universal & Targeted (Hardiker Lvs 1 - 3)
	<b>Community Psychology Services:</b> Assessment and treatment services for children aged under 18 years with mild to moderate psychological presentations (for example, anxiety, grief/loss, behavioural and emotional difficulties)	Statutory	Targeted (Hardiker Lvs 2 & 3)
	<b>Resource Officer for Suicide Prevention:</b> Support for the implementation of Local Connecting for Life Action Plan; response to deaths by suspected suicide.	Statutory	Targeted (Hardiker Lvs 1 - 3)
	<b>CAMHS:</b> Assessment and therapeutic interventions for children and their families with a range of mental health disorders. Inpatient Unit: based in Merlin Park is a 20 bed facility which accepts referrals from community based CAMHS teams with a primary remit for 9 counties across the West, North West, and Midlands (also functions with a national remit as required).	Statutory	Targeted (Hardiker Lvs 1 - 3)
	<b>Disability Services:</b> Children's disability services are for children and young people up to 18 years. Assessment of Need Service and the Early Intervention Service are focused on children aged 0-5 years. The School Age Teams Service focus on children aged 5-12 years	Statutory	Targeted (Hardiker Lvs 1 - 3)
<b>GTM Travellers Primary Care Project</b>	Peer led Primary Health Care Programmes in Galway City, South East Galway, Tuam and Roscommon: Aim to empower members of the Traveller community to be pro -actively involved in improving the health status of the Traveller community through peer led outreach visits, health promotion and advocacy.	Voluntary	Universal & Targeted (Hardiker Level 2)

Organisation	Service	Statutory or Voluntary	Universal, Targeted or Both
<b>Tusla</b>  Tusla is the state agency for child and family services and has statutory responsibility for child protection and welfare.	<b>Prevention, Partnership and Family Support:</b> development and implementation of Meitheal and the Local Area Pathway framework including Child and Family Support Networks (CFSNs)	Statutory	Universal and Targeted (Hardiker Lvs 1 - 3)
	<b>Family Services:</b> Bespoke and modularised support interventions for families with identified need (not reaching threshold for Child Protection and Welfare Social Work)	Statutory	Targeted (Hardiker Lvs 2 & 3)
	<b>Early Years Inspectorate:</b> Information advice and inspection of Early Years Services	Statutory	Universal
	<b>Children in Care Team:</b> service to children and young people in foster and residential care.	Statutory	Targeted (Hardiker Lvs 3 & 4)
	<b>Child Protection and Welfare Intake Service:</b> discuss child protection and welfare concerns and respond to referrals	Statutory	Targeted (Hardiker Lvs 3 & 4)
	<b>Fostering Team:</b> Recruitment, assessment, training and support for foster carers	Statutory	Targeted (Hardiker Lvs 2 & 3)
<b>Family Resource Centres</b>  Combat disadvantage and improving the functioning of the family unit.	5 x Family Resource Centres: in Doughiska (Galway City), Loughrea, Gort, Oughterard and Headford. range of supports to families including counselling, parent and toddler groups, parenting programmes, education and training opportunities, after school supports, group programmes for children and communities of interest.	Voluntary	Universal and Targeted (Hardiker Lvs 1 & 2)



Organisation	Service	Statutory or Voluntary	Universal, Targeted or Both
<b>Jigsaw Galway</b>	Jigsaw Galway is a free, non-judgmental and confidential support service for young people (15-25) living in Galway City and County. It provides guidance and support for young people who are going through a difficult or distressing time. It also provides advice and guidance for anyone concerned about a young person in their life or work.	Voluntary	Universal and Targeted (Hardiker Lvs 1 & 2)
<b>Rahoon Family Support Centre</b>	Delivery of Homework Club, Youth Group and Activity Groups for children aged 5 to 18 years.	Voluntary	Universal
<b>Galway Autism Partnership</b>	Provides peer and family support, information provision, advocacy services. GAP creates opportunities for social engagement and participation as well as education and training.	Voluntary	Targeted (Hardiker Lvs 2)
<b>Muscular Dystrophy Ireland</b>	MDI is a support agency for adults and families with children with muscular dystrophy and other allied neuromuscular conditions. MDI has a Family Support Worker and a Youth and Respite Worker who work in the Western Region (Galway, Mayo & Roscommon).	Voluntary	Targeted (Hardiker Lvs 2 & 3)
<b>Croí na Gaillimhe Resource Centre</b>	Vincent de Paul funded Community Resource Centre delivering family supports and community development initiatives to children, young people, parents, women, men, older people, people with disabilities and mental health issues, non-Irish Nationals, International Protection Applicants and Refugees	Voluntary	Universal and Targeted (Hardiker Lvs 1 & 2)
<b>Galway Childcare Committee</b>	Parent and Toddler Group grant scheme.	Voluntary	Universal
	Training for parents and childcare service providers	Voluntary	Universal
	Information service for parents, professionals, students and childcare providers.	Voluntary	Universal
	Parent Support: information, training, networking	Voluntary	Universal
	Support for administration of Government schemes	Voluntary	Universal

Organisation	Service	Statutory or Voluntary	Universal, Targeted or Both
<b>Pre-School Services</b>	290 x pre-school services in the City and County provide a range of full day care and sessional day care services to children. Majority of these services are operated by private providers.	Private & Voluntary	Universal
<b>Helplinks</b>	Provide play therapy, art therapy, youth counselling and youth addiction counselling.	Voluntary	Targeted (Hardiker Lvs 2 & 3)
<b>Down Syndrome Ireland, Galway</b>	Providing information, support and friendship to people with Down syndrome and their families in Galway City and County.	Voluntary	Targeted (Hardiker Lvs 2 & 3)
<b>Domestic Violence Response</b>	Services include counselling support and information provision, a telephone support service, advocacy accompaniment to relevant agencies including courts, education support programmes for women and training and public awareness.	Voluntary	Universal and Targeted (Hardiker Lvs 2 & 3)
<b>COPE Galway – Modh Éile House</b>	Supporting those experiencing domestic violence through outreach service, telephone support, children’s service, drop-in service for all women seeking information and support in relation to domestic violence and related parenting issues and support and guidance re. managing partner contact and access.	Voluntary	Targeted (Hardiker Lvs 2 - 3)
<b>Cuidiú</b>	Antenatal and postnatal groups and courses, local support and reliable information to help parents make informed decisions around pregnancy, childbirth, breastfeeding and parenting	Voluntary	Universal
<b>La Leche League</b>	Provides information and support to women who want to breastfeed their babies. Informal monthly meetings led by accredited leaders.	Voluntary	Universal
<b>Parent and Toddler Groups</b>	31x Parent and Toddler Groups active in the City and County area	Voluntary	Universal
<b>Teen Parent Support Group (HSE)</b>	Provides support during pregnancy until your babies turns 2 years of age. Support includes Antenatal classes, advice on feeding and caring for babies. Also advises on finances, accommodation issues and getting back to work/ education.	Statutory	Targeted (Hardiker Level 2)

Organisation	Service	Statutory or Voluntary	Universal, Targeted or Both
<b>Brothers of Charity</b>	Services to people with an intellectual disability and their families in Galway City and County. Services range from early intervention services for young children with complex needs, in partnership with the HSE and Enable Ireland, through to school-age services and a variety of programmes for adults.	Voluntary	Targeted (Hardiker Lvs 2 & 3)
<b>Ability West</b>	Services and supports to over 520 children and adults with an intellectual disability throughout Galway City and County. Works in partnership with service users, family members and the community in order to enable people with intellectual disability to achieve their full potential and to take their rightful place in society.	Voluntary	Targeted (Hardiker Lvs 2 & 3)
<b>Enable Ireland</b>	Services for children with physical disabilities in County Galway including assessment and therapy services, early intervention services for children aged 0 – 6 years, pre- school and support services.	Voluntary	Targeted (Hardiker Lvs 2 & 3)
<b>Time4US</b>	Time4Us provides a safe, fun-filled, relaxed environment for family members who wish to spend time with children that they do not live with. This service is also provided to grandparents and grandchildren, siblings or other family members.	Voluntary	Targeted (Hardiker Lvs 2 & 3)
<b>ISPCC</b>	As well as Childline and Childline Online, the ISPCC has a Child and Family Support Service, Mentoring Programme (Child & Parent mentoring) and a Support Line	Voluntary	Universal and Targeted (Hardiker lvs 1 – 3)
<b>Galway Rape Crisis Centre</b>	Immediate contact services, counselling services and outreach and advocacy services for survivors of sexual violence.	Voluntary	Targeted (Hardiker lvs 2 – 3)
<b>Barnahus / Onehouse</b>	Provides a safe space where children can access teams of Gardaí, social workers and other professionals working together under one roof in cases where sexual abuse is suspected. Ultimately, the project aims to develop better pathways and minimise the trauma on children and young people.	Statutory & Voluntary	Targeted (Hardiker lvs 2 – 3)

Organisation	Service	Statutory or Voluntary	Universal, Targeted or Both
<b>Galway Drug and Alcohol Family Support</b>	This is a free service provided by the Western Region Drug and Alcohol Task Force to young people aged under 18 years who are affected by a loved one’s drug or alcohol use.	Voluntary	Targeted (Hardiker Level 2)

## Education

Organisation	Service	Statutory or Voluntary	Universal, Targeted or Both
<b>Galway and Roscommon Education and Training Board (ETB)</b>	Galway and Roscommon ETB is a local education authority which provides a range of educational programmes and services in the areas of adult education, further education and secondary education, literacy Schemes, outdoor Education, VTOS and Youthreach Programmes Under its remit of further education, the ETB works with local youth work organisations and groups to support the development of youth work programmes and facilities.	Voluntary	Targeted (Hardiker Level 2)
<b>Solas</b>	SOLAS is responsible for developing the Further Education and Training (FET) sector in Ireland. It is responsible for funding, planning and co-ordinating a wide range of training and further education programmes for jobseekers and other learners.	Voluntary	Universal
<b>Community Training Centres (CTC)</b>	Community Training Centres are independent community-based organisations, catering for the training and employment needs of early school leavers, primarily aged between 16 and 21. The training is certified leading to recognised awards on the National Framework of Qualifications.	Voluntary	Universal
<b>Local Training Initiative (LTI)</b>	The LTI project-based training and work experience programme is carried out in the local community and run by local community groups throughout Galway. The programme is designed for people who are unemployed, primarily those aged 18-35 years who are experiencing difficulty in gaining entry to the labour market due to personal, social or geographic disadvantage.	Voluntary	Targeted (Hardiker level 2)
<b>Specialist Training Programmes (STP)</b>	STP programmes in Galway are predominantly delivered to people identified as having a need for assistance with their learning and may require, where necessary, more intensive support: additional training duration; adapted equipment; transport arrangements; enhanced programme content.	Voluntary	Targeted (Hardiker level 2)
<b>Youthreach</b>	Youthreach is a Department of Education and Skills official education, training and work experience programme for early school leavers aged 15 – 20. 5 x Youthreach Centres in Galway: Letterfrack, Galway City, Tuam, Ballinasloe and Portumna.	Voluntary	Targeted (Hardiker level 2)

<b>STAR Tuam</b>	A joint initiative of the Department of Education and Skills, the Department of Justice, the Department of Children and Youth Affairs and the Western Traveller and Intercultural Development Centre. This NITRIS pilot project aims to improve the attendance, participation and retention of Traveller children and young people in the Tuam area by working with students, parents and schools.	Voluntary	Targeted (Hardiker level 2)
<b>Turas</b>	GRETB initiative providing accredited learning opportunities to early school leavers aged 14 – 16 years.	Voluntary	Targeted (Hardiker level 2)
<b>Department of Education</b>	There are 226 mainstream primary schools across Galway city and County and a further 8 special schools. There are 46 post primary schools in the city and county.	Statutory	Universal
<b>Third level Institutions</b>	NUI, Galway	Statutory	Universal
	Galway Mayo Institute of Technology	Statutory	Universal
<b>National Educational and Psychological Service</b>	Provides psychology service to students as well as critical incident support and consultative service to schools	Statutory	Universal, Hardiker Level 1
<b>Tusla Education Support Services (tess)</b>	tess: service to families and schools where there are issues regarding school attendance, school places and home education. Incorporates School Completion Programme and Home School Liaison Programme.	Statutory	Targeted (Hardiker Lvs 2 & 3)
<b>Galway City Partnership</b>	Delivery of Incredible Years Programme in 6 pre-schools and 6 primary schools	Voluntary	Universal and Targeted (Hardiker level 2)
	Youth Advocacy programme to provide support for young people in drafting an individualised 'Career Path Plan' and encouraging clients to access training, education or employment opportunities	Voluntary	Targeted (Hardiker Level 2)
	Galway Education Initiative: Facilitate a process of dialogue, planning and action to ensure that all young people are given the opportunity to realise their full potential, through access to, and full participation in a second level school in Galway City	Voluntary	Targeted (Hardiker Level 2)

<b>Galway Rural Development</b>	Works with schools and provides extra-curricular courses in music, yoga and mindfulness for children throughout the school cycle. Supports Gort Homework Club and delivers Driver Theory training and basic work skills such as Safe Pass, HACCP and Manual Handling.	Voluntary	Universal and Targeted (Hardiker Level 2)
---------------------------------	-----------------------------------------------------------------------------------------------------------------------------------------------------------------------------------------------------------------------------------------------------------------------	-----------	-------------------------------------------

### Homelessness Services

Organisation	Service	Statutory or Voluntary	Universal, Targeted or Both
<b>COPE Galway</b>	Cope offers a range of services for families who are experiencing or at risk of homelessness, including support, information, referral and emergency accommodation. The Fairgreen Hostel provides services to homeless men and Osterley Lodge provides emergency and short term accommodation for women and children. Galway Family Hub provides accommodation to eight families.	Voluntary	Targeted (Hardiker level 2)
<b>SIMON Community, Galway</b>	Provision of accommodation solutions for people experiencing homelessness in Galway and a drop-in information and support service for people at risk of homelessness or experiencing homelessness.	Voluntary	Targeted (Hardiker level 2)
<b>Peter McVerry Trust</b>	Provides low-threshold entry services, primarily to younger people and vulnerable adults with complex needs, and offers pathways out of homelessness based on the principles of the Housing First model.	Voluntary	Targeted (Hardiker level 2)

## Policing and Youth Justice

Organisation	Service	Statutory or Voluntary	Universal, Targeted or Both
<b>An Garda Síochána</b>	Garda Stations x 47	Statutory	Universal
	Community Policing e.g. neighbourhood watch, community alert. One Sergeant and eight Gardaí provide Community Policing on a full time basis in the City and Garda based in Ballinasloe, Tuam, Clifden and Loughrea provide community policing services as part of their brief.	Statutory	Universal
	Juvenile Liaison Officers x 4	Statutory	Targeted (Hardiker Lvs 2 & 3)
	There are 4 Garda Diversion Projects in the County (BÁN, MEAS, TREO NUA and Junction). Two of these are delivered by Foróige and 2 are delivered by Youth Work Ireland.	Voluntary	Targeted (Hardiker Lvs 2 & 3)
<b>Probation Services</b>	The Young Person's Probation Service is the lead agency for the assessment and management of young offenders in the community. It also provides funding and support to community-based organisations to deliver services and training programmes in their communities with the aim of reducing the risk of offending. Probation Service funds 3 projects for Young People who have dropped out of education and other structured programmes: <b>Dochas don Óige</b> in Galway City, <b>Tuam Community Training Centre</b> and <b>Canal House</b> , Ballinasloe.	Statutory	Targeted (Hardiker Level 2)



## Local Authority Services

Organisation	Service	Statutory or Voluntary	Universal, Targeted or Both
Galway City Council	<b>Comhairle na nÓg</b> gives young people the opportunity to be involved in the development of local services and policies. It is designed to enable young people to have a voice on the services, policies and issues that affect them in their local area.	Voluntary	Universal
	<b>Housing service</b> including Emergency Homeless Accommodation	Statutory	Targeted (Hardiker Lvs 2&3)
	<b>Leisure services</b> – 27 x playgrounds (4 with special needs equipment), leisure centre including swimming pool, 3 x skate parks, 2 x multi-use game areas across the City	Statutory	Universal
	<b>Galway City Arts Office</b> provides bursaries and supports to individual artists as well as arts grants to professional and voluntary arts organisations operating in Galway city.	Statutory	Universal
	<b>The Arts for Children and Young People programme</b> assists organisations which provide access to creative activities for children. These include Baboró International Arts Festival for Children, Galway Community Circus and Writers and Composers in residence.	Statutory	Universal
Galway County Council	<b>Comhairle na nÓg</b> gives young people the opportunity to be involved in the development of local services and policies. It is designed to enable young people to have a voice on the services, policies and issues that affect them in their local area.	Statutory	Universal
	<b>Housing service</b> including Emergency Homeless Accommodation	Statutory	Targeted (Hardiker Lvs 2&3)
	<b>Leisure services:</b> 61 x playgrounds across Count, 2x skate park facilities are linked to playgrounds in Tuam and Loughrea.	Statutory	Universal
	<b>Galway Library Service</b> extends across the county and city administrative areas. The service comprises a Library Headquarters in Galway City and a branch library network of 28 full and part-time library services (including part-time library services on 4 offshore inhabited islands). There are also 2 mobile libraries.	Statutory	Universal
	<b>Galway County Arts Office</b> supports the Artist in Schools scheme, Music in Schools, Youth Arts Initiatives such as Áras Éanna Arts Centre located on Inis Óírr	Statutory	Universal

## Social Welfare

Organisation	Service	Statutory or Voluntary	Universal, Targeted or Both
<b>Department of Employment and Social Protection</b>	Intreo offices x 5: – single point of contact for all employment and income supports (Galway City, Ballinasloe, Gort, Tuam and Clifden)	Statutory	Targeted (Hardiker Level 2)
<b>Galway City Partnership</b>	Obair / Local Employment Service: Enterprise Supports, CV Clinics, Employment Skills Workshops and Work Experience Agreements for young people	Voluntary	Targeted (Hardiker Level 2)
<b>MABS</b>	The Money Advice and Budgeting Service is the State’s money advice service, guiding people through dealing with problem debt. Services in Galway are based in Galway City, Loughrea, An Cheathrú Rua and Tuam.	Statutory	Targeted (Hardiker Level 2)
<b>Galway Rural Development</b>	GRD delivers a range of supports including advice, training, mentoring and support to develop a business plan as well as the allocation of capital funding.	Voluntary	Universal and Targeted (Hardiker Level 2)

## Sports, Recreation, Arts, Culture

Organisation	Service	Statutory or Voluntary	Universal, Targeted or Both
<b>Galway Sports Partnership</b>	Club development grant scheme, volunteer training, information provision, support for enhanced participation in sport and recreation at local level especially for targeted groups.	Voluntary	Universal and Targeted (Hardiker level 2)
<b>Music Generation</b>	Introducing music to children who may otherwise not have the opportunity to participate through provision of tuition, performance opportunities and renting instrument.	Voluntary	Universal and Targeted (Hardiker level 2)
<b>Voluntary Sports Clubs</b>  A wide range of sporting clubs and organisations are active in Galway.	The <b>Gaelic Athletic Association</b> is a volunteer led, community based organisation that promotes Gaelic games such as Hurling, Football, Handball and Rounders and works with sister organisations to promote Ladies Football and Camogie. There are 80 GAA Clubs in Galway.  <b>Galway Football Association:</b> 36 soccer clubs registered  4 x <b>Rugby Football Clubs</b> in Galway	Voluntary	Universal
<b>Westside Arts Festival</b>	Westside Arts Festival is a community-led annual celebration of creativity in the Westside area.	Voluntary	Universal
<b>Galway Community Circus</b>	Advances the personal and social development of young people through Circus Arts	Voluntary	Universal
<b>Babaró</b>	Baboró International Arts Festival for Children is Ireland's flagship international arts festival devoted exclusively to children and families. Complementary projects undertaken throughout the year in preparation for the annual festival.	Voluntary	Universal

## Youth

Organisation	Service	Statutory or Voluntary	Universal, Targeted or Both
<b>Foróige Galway:</b>	Provides services for young people aged 10-18 years and their families. There are 5 worker-led youth projects in Galway: Ballinfoile Area Youth Project, Knocknacarra Youth Dev Project, Galway City Youth Café, Eastside Youth Service and Gort Youth Café –Zone.	Voluntary	Universal and Targeted (Hardiker level 2)
	Galway STEAM Project builds capacity of those working with young people to incorporate Science, Technology, Engineering, Arts and Maths into their work.	Voluntary	Universal and Targeted (Hardiker level 2)
<b>Youth Work Ireland Galway:</b>	Provides services for young people aged 10-18 years and their families. There are 5 worker-led youth projects in Galway: YWIG Westside, CAPE , shOUT!, Tuam Youth Service, Loughrea Youth Project, Ballinasloe Youth Information Centre and East Galway Youth Project.	Voluntary	Universal and Targeted (Hardiker level 2)
	Youth Work Ireland provides counselling services to help young people deal with issues such as anxiety, relationships, family issues, peer pressure, substance abuse, self-harm, isolation and suicidal ideation	Voluntary	Universal and Targeted (Hardiker level 2)
<b>No. 4 Youth Service</b>	Aims to enhance the quality of young peoples’ lives by providing a variety of supports for young people including a Drop in Centre, Counselling Services, Careers guidance, accommodation support and Education support for young people ranging in age from 13 – 25 years.	Voluntary	Targeted (Hardiker level 2)
<b>Bohermore Community Project Ltd</b>	Bohermore Youth Development Programme provides Homework Club , Afterschool and Youth Clubs for the children and young people of the Bohermore area in Galway City	Voluntary	Universal and Targeted (Hardiker level 2)
<b>Involve</b>	Youth Work programmes for Traveller young people in Salthill (Galway City), Loughrea and Ballinasloe.	Voluntary	Universal and Targeted (Hardiker level 2)

<b>Muintearas Teo.</b>	Is eagraíocht oideachais agus oiliúna pobail é Muintearas ag tabhairt tacaíocht le luathfhorbairt an linbh; oideachas bunscoile; forbairt ábhair foghlam agus cláracha don óige i gceantar na Gaeltachta.	Voluntary	Universal and Targeted (Hardiker level 2)
<b>FORUM Adolescent Support Programme</b>	Youth provision for young people between 10 and 18 years, with priority given to young people at risk. Programmes include After School Activity programmes, junior arts programmes, parents education workshops, outdoor adventure programmes, delivery of child protection training and summer camps	Voluntary	Universal and Targeted (Hardiker level 2)

## Other Services

Organisation	Service	Statutory or Voluntary	Universal, Targeted or Both
<b>Western Traveller &amp; Intercultural Development (West Trav), Tuam</b>	Community development organisation and youth work provider in the Tuam area. Delivers childcare, primary health care and youth work services.	Voluntary	Universal and Targeted (Hardiker level 2)
<b>Galway Traveller Movement</b>	Galway Traveller Movement works to achieve equality and self-determination for the Traveller community in Galway City and County by highlighting the main issues that affect the community such as health, accommodation, education, discrimination and enterprise and work issues.	Voluntary	Universal and Targeted (Hardiker level 2)
<b>Amach! LGBT Galway</b>	Amach! runs an outreach project for LGBTI+ young people in Gort in collaboration with Foróige.	Voluntary	Universal and Targeted (Hardiker level 2)
<b>shOUT!</b>	shOUT! is run by Youth Work Ireland Galway. It is a group that works with LGBTQ young people aged 14-21 years in the Galway region. shOUT! also provides support and information for parents/guardians.	Voluntary	Universal and Targeted (Hardiker level 2)
<b>Gig Soc</b>	GiG Soc is the LGBTQA+ society in NUIG.	Voluntary	Universal and Targeted (Hardiker level 2)
<b>GOSSIP</b>	GOSSIP (Gender Odyssey Support Service and Information Project) is a Galway based support group for trans people living in the West of Ireland. It runs its project from Teach Solais in Galway City.	Voluntary	Universal and Targeted (Hardiker level 2)
<b>Parent and Toddler Groups</b>	There are 37 x Parent and Toddler Groups in the county.	Voluntary	Universal

<b>Galway Rural Development</b>	Administers the Local Community Development Programme, the Rural Development Programme, the Rural Social Scheme, the Tús programme and the North East Galway Rural Transport Programme in East County Galway	Voluntary	Universal and Targeted (Hardiker level 2)
<b>FORUM Connemara Ltd.</b>	FORUM Connemara Ltd. Promotes and assists Social Development, Enterprise Development and Community Development. FORUM co-ordinates an Adolescent Support Programme, three Community Employment Schemes; one Job Initiative Scheme, one Rural Social Scheme and a Tús programme.	Voluntary	Universal and Targeted (Hardiker level 2)
<b>Comhairle Ceantar na nOileán</b>	Comhairle Ceantar na nOileán is the Rural Development Company catering for the Islands off the Galway Coast. The main aims of this committee are the promotion of economic, social and cultural needs of the island populations.	Voluntary	Universal and Targeted (Hardiker level 2)
<b>Westside Community Resource Centre</b>	Westside Resource Centre provides fully serviced offices to a variety of services and local branches of national organisations. Support local community-led social, cultural and development initiatives.	Voluntary	Universal and Targeted (Hardiker level 2)

## Section 4: Local Needs Analysis in Galway

During 2019, CYPSC member organisations participated in three planning sessions guided by an external facilitator. Significant points arising from the socio-demographic profile along with principal findings from the consultations undertaken with children, young people and their parents were considered during these sessions. A comprehensive account of the findings of these consultations is available in the following documents:

Tusla Child and Family Agency (2019) *In their Own Words: Feedback from Consultation with Parents across Galway City and County* [online] Available:

[https://www.cypsc.ie/fileupload/Documents/Resources/Galway/Tulsa%20-%20In%20Their%20Own%20Words%20\(HR-1\).pdf](https://www.cypsc.ie/fileupload/Documents/Resources/Galway/Tulsa%20-%20In%20Their%20Own%20Words%20(HR-1).pdf)

Tusla Child and Family Agency (2019) *What Parents Said, What Parents Want* [online] Available:

[https://www.cypsc.ie/fileupload/Documents/Resources/Galway/Tulsa%20-%20What%20Parents%20Said%20Report%20\(HR\).pdf](https://www.cypsc.ie/fileupload/Documents/Resources/Galway/Tulsa%20-%20What%20Parents%20Said%20Report%20(HR).pdf)

Athenry Child and Family Support Network et al (2018) *Findings of a Youth-led Research Initiative in Athenry, County Galway* [online] Available:

<https://www.cypsc.ie/fileupload/Documents/Resources/Galway/ATHENRY%20FINAL%2013th%20April.pdf>

Tusla et al (2018) *Youth-led Research Initiative in County Galway Findings from Tuam, Clifden and Ballybane: Composite Report* [online] Available:

<https://www.cypsc.ie/fileupload/Documents/Resources/Galway/County%20Galway%20Roll%20Out%20Youth%20Led%20Research.pdf>

Following the identification of predominant themes, the group engaged in an ‘affinity grouping’ style collaborative prioritisation activity wherein participants proposed responses and grouped these responses into clusters. After establishing ‘affinity groups’ of initiatives, participants ranked each group to establish a priority of responses. Participants then worked in small groups to identify potential actions that would progress prioritised responses.

This section presents a distilled account of this process categorised by the overarching national outcomes for children.



## Outcome Area 1: Active and healthy, physical and mental wellbeing

**How are children and young people in Galway doing?**

Infant and child mortality rates are in line with the national average. Measures of babies' weights and immunisation rates are above average.

The proportion of children and young people recorded as being in very good health is above the national average in the county area and below the national average in the city area.

The proportion of mothers who are exclusively breast-feeding is low in the county.

The proportion of children with disabilities, long-lasting conditions or healthy difficulties is broadly in line with national trends.

County level figures relating to self-harm indicate that the rate of self-harm is above average for women and a little below average for men in Galway. Anecdotal evidence that suicide rate is high among Travellers.

**What do children, young people and parents think?**

Parents of young children want more safe places for children to play.

Young people want more access to mental health supports and want more information on how to support each other.

Parents of children with disabilities want more support for community-based and peer-led initiatives aimed at improving health and wellbeing.

Parents want preventative approach to drugs and alcohol.

**What do people working with children, young people and families think?**

A whole-of-family approach is needed to address mental health.

Families need more support with weaning children.

Families need supports to improve diet.

A greater emphasis needs to be placed on infant mental health.

Evaluate current provision for children experiencing domestic violence

**Priorities emerging**

(actions relating to Early Years 0 – 3s to reflect content of *existing Early Years Health and Well-being Plans*)

<b>Active Play</b>	Deliver opportunities for children to play.
	Promote Active Play within preschools
<b>Healthy Eating</b>	Provide targeted and universal weaning supports
	Promote healthy and social eating in preschools
	Promote healthy eating
<b>Drugs and Alcohol</b>	Support Primary Prevention initiatives relating to drugs and alcohol
<b>Domestic Violence</b>	Establish evidence base for current service provision
<b>Child and Family Mental Health</b>	Make information on local services more available
	Continue promoting whole-of-family approach within mental health services.
	Supports for families of children with disabilities.
	Support for children from minority groups.
	Continue to promote positive infant mental health
	Guidance for young people about reacting to peer disclosures

**Outcome Area: Achieving Full Potential in Learning and Development**

<p><b>How are children and young people in Galway doing?</b></p>	<p>Children in City and County areas more likely to have a mother with higher than average education attainment.</p> <p>Young people in Galway are significantly more likely to attain a third level education.</p> <p>Young people in the county are more likely to complete their education with an upper-secondary qualification than are their city counterparts.</p> <p>School retention rates in the city and county are below average.</p> <p>Significant disparity between Travellers and non-Travellers in the level of education completed.</p>						
<p><b>What do children, young people and parents think?</b></p>	<p>Parents of young children want their children to get less homework.</p> <p>Parents want their children to have more support to achieve at school.</p> <p>Young people want access to more counselling at school.</p> <p>Young people say there needs to be more access to youth work style projects.</p>						
<p><b>What do people working with children, young people and families think?</b></p>	<p>There is a need for more afterschool / homework supports for young people</p> <p>There is a gap in services for 5 to 9 year olds.</p> <p>Additional supports and focus should be based around the following areas: Athenry; Connemara and other areas of Rural Isolation; certain areas of Galway City; Tuam; Ballinasloe and Portumna and Gort.</p> <p>Support a trauma informed response among those working with young people.</p> <p>Levels of early school leaving within the Travelling community is concerning.</p>						
<p><b>Priorities emerging</b></p>	<table border="1"> <tr> <td data-bbox="507 1283 738 1485"> <p><b>Out of School time Supports</b></p> </td> <td data-bbox="746 1283 1402 1485"> <p>After-school and homework supports for young people (especially in areas experiencing disadvantage and within the Travelling community)</p> <p>Provision of afterschool services aimed at 5 to 9 year olds.</p> </td> </tr> <tr> <td data-bbox="507 1507 738 1619"> <p><b>Trauma Informed Practice</b></p> </td> <td data-bbox="746 1507 1402 1619"> <p>Reflect a trauma-informed response among those working with children and young people.</p> </td> </tr> <tr> <td colspan="2" data-bbox="507 1641 1402 1686"> <p>Additional resources to focus on specific cohorts and areas of disadvantage [change management]</p> </td> </tr> </table>	<p><b>Out of School time Supports</b></p>	<p>After-school and homework supports for young people (especially in areas experiencing disadvantage and within the Travelling community)</p> <p>Provision of afterschool services aimed at 5 to 9 year olds.</p>	<p><b>Trauma Informed Practice</b></p>	<p>Reflect a trauma-informed response among those working with children and young people.</p>	<p>Additional resources to focus on specific cohorts and areas of disadvantage [change management]</p>	
<p><b>Out of School time Supports</b></p>	<p>After-school and homework supports for young people (especially in areas experiencing disadvantage and within the Travelling community)</p> <p>Provision of afterschool services aimed at 5 to 9 year olds.</p>						
<p><b>Trauma Informed Practice</b></p>	<p>Reflect a trauma-informed response among those working with children and young people.</p>						
<p>Additional resources to focus on specific cohorts and areas of disadvantage [change management]</p>							

**Outcome Area: Safe and Protected from Harm**

**How are children and young people in Galway doing?**

Children and young people in Galway are less likely to be in care than children and young people nationally.

Children are less likely to be active on the Child Protection Notification System or to have an open social work file. Cases open to social work are far less likely to be awaiting the allocation of a social worker than the national average.

There are ten Child and Family Support Networks across the city and county.

The number of Meitheal requests is in line with the national average. Meitheal requests more likely to progress to implementation.

**What do children, young people and parents think?**

Parents of young children want more information on internet safety, anxiety and bullying.

Parents want more support in fulfilling their parenting role.

Parents and young people want more information on services available in varied formats.

Parents of children from minority groups don't want their children to experience discrimination and racism.

Young people want more gardaí and a greater focus on law and order.

Young people want more child-centred resource materials.

**What do people working with children, young people and families think?**

More services for children experiencing domestic violence are needed. Parenting courses need to be more universally available.

There needs to be a balance of 'behavioural' and 'relational' parenting courses available.

There is a need for greater guidance relating to Children First made available to independent and solo operators delivering services to children.

There is a need to support the Planet Youth Primary Prevention Model as a means of reducing alcohol and drug use.

**Priorities Emerging**

**Supporting Parents**

Make information about services and events available to families in a variety of formats.

Map and coordinate parenting programmes in the city and county.

Develop parenting courses as a universal service.

Continue to promote Meitheal as a practice model.

**Outcome Area: Economic Security and Opportunity**

**How are children and young people in Galway doing?**

Galway City and County are the first and second most affluent local authority area in the western region.

Galway City is the third most affluent local authority area in the country.

There are pockets within the city that are characterised as ‘very disadvantaged’. These lie in the Westside and Ballybane areas.

Ballinasloe has a pocket of ‘extreme disadvantage’, and there are ‘very disadvantaged’ areas in Tuam, Loughrea and Gort. Most areas categorised as disadvantaged are located along the west and south coasts of Connemara.

On the whole, young people comprise a lower than average proportion of those on the Live Register in Galway. However, the proportion is above the national average in Ballinasloe and Tuam.

**What do children, young people and parents think?**

Parents feel education is best way to ensure economic opportunities for their children.

Young people want to more help to develop hobbies and talents to create economic opportunities.

Young people want more access to career guidance during the senior cycle in school and after their exams.

**What do people working with children, young people and families think?**

Additional supports and focus should be placed on geographical areas experiencing high levels of disadvantage.

There is concern over the levels of disadvantage experienced by children experiencing homelessness.

Continued support of STEAM work as a means of developing employability skills outside of school.

**Priorities emerging**

Increased focus of resources on disadvantaged areas [change management]

Increased focus of resources on Travellers, Roma and Undocumented families [change management]

**Opportunities for employability skills outside schools**

Continued promotion of STEAM.

**Coordination of services for children experiencing homelessness**

Agreement of interagency protocols relating to children and young people experiencing homelessness

**Outcome Area: Connected, Respected and Contributing to their World**

<p><b>How are children and young people in Galway doing?</b></p>	<p>Galway city is has a very diverse population of children and young people coming from a variety of ethnic and cultural backgrounds.</p> <p>Galway city and county is home to a proportion of Traveller families that is well above the national average.</p> <p>The largest Gaeltacht area in the country is in Galway.</p> <p>A significant number of children are living in direct provision centres (85 during May 2019)</p>								
<p><b>What do children, young people and parents think?</b></p>	<p>Parents of young children want information on community-based and peer-led supports.</p> <p>Parents don't want their children to experience racism and discrimination</p> <p>Young people want a wider range of recreational options.</p> <p>Young people want more spaces to hang out with their friends.</p> <p>Young people want to be consulted about decisions that affect them.</p>								
<p><b>What do people working with children, young people and families think?</b></p>	<p>Participation of children and young people needs to be structured and supported.</p> <p>Concern over children in homeless emergency accommodation and direct provision system as well as poorly serviced Halting Sites</p> <p>Language and translation can be a challenge (incl. Irish language).</p>								
<p><b>Priorities emerging</b></p>	<table border="1"> <tr> <td data-bbox="507 1088 719 1285"> <p><b>Youth participation</b></p> </td> <td data-bbox="727 1088 1366 1285"> <p>Develop a structured and supported mechanism for young people to contribute to CYPSC and its sub-groups.</p> <p>Promote youth participation within member organisations</p> </td> </tr> <tr> <td data-bbox="507 1296 719 1453"> <p><b>Combine translation and language resources</b></p> </td> <td data-bbox="727 1296 1366 1453"> <p>Coordinate pooling of resources relating to language and translation.</p> </td> </tr> <tr> <td data-bbox="507 1464 719 1662"> <p><b>Inclusion of children and young people</b></p> </td> <td data-bbox="727 1464 1366 1662"> <p>Research experiences of children and young people from diverse cultural backgrounds and promote greater inclusion</p> <p>Promote more child and youth friendly services and spaces</p> </td> </tr> <tr> <td data-bbox="507 1673 719 1825"> <p><b>Opportunities to participate outside of sport</b></p> </td> <td data-bbox="727 1673 1366 1825"> <p>Continued support of Music Generation initiative.</p> <p>Ensure a partnership approach is brought to the development of any additional child / youth spaces [change management]</p> </td> </tr> </table>	<p><b>Youth participation</b></p>	<p>Develop a structured and supported mechanism for young people to contribute to CYPSC and its sub-groups.</p> <p>Promote youth participation within member organisations</p>	<p><b>Combine translation and language resources</b></p>	<p>Coordinate pooling of resources relating to language and translation.</p>	<p><b>Inclusion of children and young people</b></p>	<p>Research experiences of children and young people from diverse cultural backgrounds and promote greater inclusion</p> <p>Promote more child and youth friendly services and spaces</p>	<p><b>Opportunities to participate outside of sport</b></p>	<p>Continued support of Music Generation initiative.</p> <p>Ensure a partnership approach is brought to the development of any additional child / youth spaces [change management]</p>
<p><b>Youth participation</b></p>	<p>Develop a structured and supported mechanism for young people to contribute to CYPSC and its sub-groups.</p> <p>Promote youth participation within member organisations</p>								
<p><b>Combine translation and language resources</b></p>	<p>Coordinate pooling of resources relating to language and translation.</p>								
<p><b>Inclusion of children and young people</b></p>	<p>Research experiences of children and young people from diverse cultural backgrounds and promote greater inclusion</p> <p>Promote more child and youth friendly services and spaces</p>								
<p><b>Opportunities to participate outside of sport</b></p>	<p>Continued support of Music Generation initiative.</p> <p>Ensure a partnership approach is brought to the development of any additional child / youth spaces [change management]</p>								

## Section 5: Summary of Children and Young People’s Plan for Galway

### Overarching Vision of Children and Young People’s Services Committee

That outcomes for Children and Young People are improved through inter-agency working.

### Galway CYPSC Objectives for Period 2021-2023

- Promote strategic leadership on interagency collaboration and inter-agency working /planning of services
- Facilitate sharing of information, research and knowledge
- Promote the participation of children and young people
- Promote evidence informed planning and practice
- Promote early intervention and prevention
- Add value to the work of member organisations
- Respond to current and emerging needs

### Principals Underpinning the Galway Children and Young People’s Plan, 2021-2023

- That Galway CYPSC puts the best available evidence at the heart of planning and reporting processes.
- That Galway CYPSC planning is outcomes based, i.e. its purpose is to achieve agreed outcomes.
- That Galway CYPSC members own and direct the work of the committee and hold themselves and others accountable to the common agenda as expressed in this plan.
- Galway CYPSC is committed to collecting and using data to make informed decisions. Alongside quantitative data, the committee recognises the value of qualitative research to understand the experiences, meaning and views of children and young people and service providers.
- Galway CYPSC stakeholders are open to learning through reflection on how well the work has lived up to performance expectation.
- Regular and open communications will flow - bottom up, top down and across the CYPSC initiative.
- The work of Galway CYPSC will be children-centred and children and young people will participate in a structured and supported way.
- Galway CYPSC has a commitment to equality and human rights and this will be reflected in its work.

Outcome Areas	Local Priority Areas
<b>1. Active and healthy, physical and mental wellbeing</b>	a) Active Play b) Child and Family Mental Health c) Healthy Eating d) Drug and Alcohol use e) Domestic Violence
<b>2. Achieving full potential in learning and development</b>	f) Out of School time Supports g) Trauma Informed Practice
<b>3. Safe and protected from harm</b>	h) Supporting Parents
<b>4. Economic security and opportunity</b>	i) Promotion of STEAM j) Homelessness Protocols
<b>5. Connected, respected and contributing to their world</b>	k) Youth Participation l) Language and Translation m) Inclusion of Children and Young People n) Opportunities to Participate outside of Sport o) Racism and Discrimination
Local priority areas relating to Change Management	
<ul style="list-style-type: none"> <li>• Continue to commit to interagency working through making staff, expertise and resources available</li> <li>• Respect our health and wellbeing in the way we work</li> <li>• Promote Learning</li> <li>• Ensure new services and resources are focused on those most in need</li> <li>• Benefit from strategic partnerships in the development of any new Child / Youth Spaces</li> <li>• Become more culturally aware and competent</li> <li>• Develop our advocacy role</li> <li>• Work with regard to the Public Sector Equality and Human Rights Duty<sup>32</sup></li> </ul>	

<sup>32</sup> As informed by the *Tusla Galway and Roscommon Equality and Human Rights Statement*. This statement aligns to the *Galway City LCDC Equality and Human Rights Statement*.

## Section 6: Action Plan for Galway Children and Young People's Plan



## Action Plan for Galway Children and Young People's Services Committee

### Outcome 1: Active and healthy, physical and mental wellbeing

Priority Area	Objective(s)	Indicators	Target	Activities	Timeframe for completion	Lead Responsibility and partners	Link to other plans	Linked to other national outcome(s) or transformational goals
Active Play	To increase active play among 5 – 12 year olds	<p>Number of active play initiatives hosted</p> <p>Number of children engaging in active play initiatives</p>	<p>50 Active Play Initiatives Delivered</p> <p>500 children participating</p>	<p>Develop Street Play Packs</p> <p>Pilot (with Galway City Council and An Garda Síochána)</p> <p>Deliver Street Play Initiative</p>	End of 2022	<p>Healthy and Active Sub-group</p> <p>Galway City Council, Galway County Council, Galway City PPN member orgs, Galway County PPN member orgs, Child and Family Support Networks, An Garda Síochána, NUI, Galway</p>	<p>A Healthy Weight for Ireland: Obesity Policy and Action Plan 2016 - 2015</p> <p>Get Ireland Active: National Physical Plan for Ireland</p> <p>Healthy Galway City Strategy 2019 – 2021</p> <p>Galway City and County Early Years Health and Wellbeing Plans</p>	<p>BOBF Transformational Goal 2: Earlier Intervention and Prevention</p> <p>Healthy Ireland Framework Goal of increasing the proportion of people that are healthy at all stages of life</p>
	That children engage in active play while attending early years services	<p>Number of services participating in clusters of interest</p> <p>Number of children participating in forest schools and beach safaris (practice learning for staff)</p> <p>% increase in the number of hours children spend outdoors while in services</p>	<p>25 services participating</p> <p>200 children participating</p> <p>10% increase in the number of hours children spending outdoors (all services in county)</p>	<p>Convene clusters of interest</p> <p>Develop support materials</p> <p>Facilitate partnerships between Early Years Services and Forrest Schools / Galway Atlantaquarium</p> <p>Deliver practice learning sessions</p>	End of 2021	<p>Galway Childcare Committee</p> <p>Early Years Services, Forrest Schools, NUI Galway Marine Institute, Galway Atlantaquarium, CYPSC HI Oversight Group,</p>	<p>First Five: Whole of Government Strategy for Babies, Children and their Families:</p> <p>Get Ireland Active: National Physical Plan for Ireland</p> <p>Galway City and County Early Years Health and Wellbeing Plans</p> <p>Healthy Galway City Strategy 2019 – 2021</p>	<p>BOBF Transformational Goal 2: Earlier Intervention and Prevention</p> <p>Healthy Ireland Framework Goal of increasing the proportion of people that are healthy at all stages of life</p>

## Action Plan for Galway Children and Young People's Services Committee

### Outcome 1: Active and healthy, physical and mental wellbeing

Priority Area	Objective(s)	Indicators	Target	Activities	Timeframe for completion	Lead Responsibility and partners	Link to other plans	Linked to other national outcome(s) or transformational goals
Healthy Eating	That children engage in healthy and social eating practice when attending early years services	<p>Number of services participating in clusters of interest</p> <p>% increase in the number of hours children practicing social eating while in services</p>	<p>20 services participating</p> <p>200 children participating</p>	<p>Convene clusters of interest</p> <p>Supporting Services to engage with families</p> <p>Develop support materials</p>	End of 2021	<p>Galway Childcare Committee</p> <p>Early Years Services, CYPSC HI Oversight Group,</p>	<p>First Five: Whole of Government Strategy for Babies, Children and their Families:</p> <p>Galway City and County Early Years Health and Wellbeing Plans</p> <p>Community Healthcare West: Healthy Ireland Implementation Plan</p> <p>Healthy Galway City Strategy 19-21</p> <p>A Healthy Weight for Ireland: Obesity Policy and Action Plan 2016 - 2015</p>	<p>BOBF Transformational Goal 2: Earlier Intervention and Prevention</p> <p>Healthy Ireland Framework Goal of increasing the proportion of people that are healthy at all stages of life</p>
	That weaning practices within families reflect current health policy (universal and targeted)	<p>Number of workshops delivered</p> <p>Number of parents participating in workshops</p> <p>% parents reporting change in weaning practice</p>	<p>12 x theory &amp; 12 x practice demo workshops (per year)</p> <p>84 parents participating (p.yr)</p> <p>&gt;50% of parents reporting change to practice</p>	<p>Promote workshops</p> <p>Deliver workshops</p> <p>Undertake evaluation</p>	Ongoing	<p>Early Years Committee</p> <p>HSE CNDS, Tusla PPFS, HSE Health &amp; Wellbeing, CHO Regional Breastfeeding Group, Galway City Partnership, GTM</p>	<p>Tusla 50 Key Messages for Family Support</p> <p>HSE Nurture Prog.</p> <p>First Five: Whole of Government Strategy for Babies, Children and their Families</p>	<p>BOBF Trans Goal 2: Earlier Intervention and Prevention</p> <p>Healthy Ireland Framework Goal of increasing the prop. of people that are healthy at all stages of life</p>

## Action Plan for Galway Children and Young People's Services Committee

### Outcome 1: Active and healthy, physical and mental wellbeing

Priority Area	Objective(s)	Indicators	Target	Activities	Timeframe for completion	Lead Responsibility and partners	Link to other plans	Linked to other national outcome(s) or transformational goals
Healthy Eating (cont.)	That families make positive health choices relating to food and nutrition	Number of community food and nutrition courses delivered (HFME)  Number of participants on community food and nutrition courses	18 x Healthy Food Made Easy courses delivered  108 participants attending HFME courses	To promote HFME courses  To coordinate delivery of courses	End of 2021	Galway County HI Coordinator  Galway County Council, HSE CNDS, Galway City HI Coordinator, CYPSC HI Oversight Group	Community Healthcare West: Healthy Ireland Implementation Plan  Healthy Galway City Strategy 2019 – 2021	BOBF Transformational Goals 1 & 2: Supporting Parents; Earlier Intervention and Prevention  Healthy Ireland: A Framework for Improved Health and Wellbeing
Child and Family Mental Health	That families are aware of what mental health services are available to them	% increase in the number of appropriate self-referrals to mental health services	To deliver information of mental health services to 100% of TY student in the county	Map existing services  Develop Resources  Circulate and promote resources	End of 2023	Active and Healthy Sub-Group  CAMHS, Jigsaw, Youth Work Ireland, Mental Health Service Providers	Connecting For Life: Galway, Mayo and Roscommon	BOBF Trans Goals 2: Early Intervention and Prevention  Healthy Ireland: A Framework for Improved Health and Wellbeing
	That a whole-of-family approach is adopted within mental health services  Apply learning from pilot of Family Talk programme	Agreement of a protocol promoting a whole-of-family approach with mental health services  Amendment of programme	Implementation whole-of-family protocol within key services  Agreement of local response	Draft a protocol  Present to Mental Health Services at appropriate level  Protocol adopted  Disseminate and consideration of findings	End of 2021  End 2021	Active and Healthy Sub-Group  Crosslinx West Steering Committee [HSE AMH]	Sharing the Vision – a Mental Health Policy for Everyone 2020 - 2030	BOBF Transformational Goals 4: Ensure Quality Services

## Action Plan for Galway Children and Young People's Services Committee

### Outcome 1: Active and healthy, physical and mental wellbeing

Priority Area	Objective(s)	Indicators	Target	Activities	Timeframe for completion	Lead Responsibility and partners	Link to other plans	Linked to other national outcome(s) or transformational goals
	That expertise is shared between disciplines and practices	Number of practitioners / clinicians attending inter-disciplinary training	That 30 clinicians / practitioners attend inter-disciplinary training	Agreement of response Promote and rollout inter-disciplinary training on mental health (and whole of family approach / showcase local expertise or approaches)	Ongoing	AMH, CAMHS, Area Medical Office	Sharing the Vision – a Mental Health Policy for Everyone, 2020 - 2030	BOBF Transformational Goals 4: Ensure Quality Services
	That families of children with disabilities feel supported	Number of community-based initiatives delivered to parents of children with disabilities  Number of families participating	Delivery of programme of community based supports for 30 families of children with disabilities.	Plan programme of work  Promote programme  Coordinate delivery of programme	End 2021	Down Syndrome Ireland, Galway and Galway Autism Partnership  CYPSC HI Oversight Group  HSE Disabilities Services	National Disability Inclusion Strategy (2017-2021)	BOBF Trans Goals 1 & 2: Supporting Parents; Earlier Intervention and Prevention  Healthy Ireland Framework Goal of increasing the proportion of people that are healthy at all stages of life
	That evidence-based practice relating to infant mental health is promoted among new parents	Proportion of new parents receiving 'Building a Happy Baby' material.	That 100% new parent in the county is presented with Building a Happy Baby material.	Continued delivery of Building a Happy materials	Ongoing	Early Years Committee  HSE Public Health Nursing, UHG and Portiuncula Maternity Units, HSE Registration office	Sharing the Vision – a Mental Health Policy for Everyone, 2020 - 2030	BOBF Trans Goals 1 & 2: Supporting Parents; Earlier Inter & Prevention  HI Framework Goal of increasing the prop of people that are healthy at all stages of life

## Action Plan for Galway Children and Young People's Services Committee

### Outcome 1: Active and healthy, physical and mental wellbeing

Priority Area	Objective(s)	Indicators	Target	Activities	Timeframe for completion	Lead Responsibility and partners	Link to other plans	Linked to other national outcome(s) or transformational goals
	That young people are able to respond effectively to peer disclosures about mental health	Percentage increase in number of TY Students comfortable talking with friends re personal issues; (Planet Youth Census)	To deliver resources to 100% of TY students supporting an effective response to peer disclosures relating to mental health.	Development of materials  Distribution of materials	End of 2023	Active and Healthy Sub-group  CAMHS, Youth Work Providers, GTM, CYPSC	Connecting for Life: Galway, Mayo and Roscommon	BOBF Transformational Goal 2: Earlier Intervention and Prevention
	To reduce the number of young people drinking and taking drugs	% young people (TY) drunk in past 30 days  % young people used cannabis once in lifetime  % young people smoking daily	<27% of young people (TY) drunk in the past 30 days  <19% of young people used cannabis once in lifetime  <7.3% of young people smoking daily	Continue to support Planet Youth Data Collection  Support Planet Youth Implementation Framework	End of 2023	WRDATF  PPFS Sub-Group and Active and Healthy Sub-Group	Tobacco Free Ireland Strategy  Public Alcohol Act 2018	BOBF Trans Goals 1, 2 and 6: Supporting Parents; Earlier Intervention and Prevention; effective collaboration
Drug and Alcohol Use	Not Around Us – Smoking denormalisation campaign	Number of organisations participating	100 organisations participating	Roll out branding of Not Around Us 'responsible smoking' in services and spaces open to children in county (excl city)	End of 2021	Active and Healthy Sub-Group and HI Oversight Sub-Group  Galway Healthy Cities, Galway Library Service, Comhairle na nÓg, Galway Childcare Committee, Early Years Services, Galway County PPN, vol. orgs	Tobacco Free Ireland Strategy	BOBF Trans Goal 2: Earlier Intervention and Prevention;

Children experiencing Domestic Violence	To evaluate Solas Óg model for addressing needs of children who have experienced domestic violence	Write up of Service Model Evaluation completed Findings shared	To evaluate model currently being delivered to address the needs of children who have experienced domestic violence	Write up model Evaluate rollout Report and disseminate findings	End 2021	PPFS Sub-group CYPSC Roscommon, COPE Galway	Practice Guide on Domestic, Sexual and Gender Based Violence	BOBF Trans Goals 1, 2 and 4: Support Parents, Earlier Intervention and Prevention and Ensuring Quality Services
-----------------------------------------	----------------------------------------------------------------------------------------------------	----------------------------------------------------------------------	---------------------------------------------------------------------------------------------------------------------	-----------------------------------------------------------------------	----------	------------------------------------------------------	--------------------------------------------------------------	-----------------------------------------------------------------------------------------------------------------

## Action Plan for Galway Children and Young People's Services Committee

### Outcome 2: Achieving Full Potential in Learning and Development

Priority Area	Objective(s)	Indicators	Target	Activities	Timeframe for completion	Lead Responsibility and partners	Link to other plans	Linked to other national outcome(s) or transformational goals
Out of School time Supports	To pilot afterschool service (with personal development component) for 5–9 year old Traveller children	Service piloted  Children attending  Evaluation completed	That 12 Traveller children receive after-school service  That a model of service delivery is developed and evaluated	Audit and model current provision  Consult parents and children  Design programme  Pilot service  Evaluate and report	End 2021	Galway County Traveller Interagency Group, Learning & Development Sub-group, Involve Youth Work Service, CYPSC Researcher	GRETB Needs Analysis to Inform Youth Work Provision, 2019	BOBF Trans Goals 1, 2 and 4: Support Parents, Earlier Intervention and Prevention and Ensuring Quality Services
	To have a joined-up and coordinated network of providers of homework supports to students at risk of early school leaving	Undertake and disseminate audit  Number of network meetings  Number of joint planning / implementation initiatives	That children attending homework support services benefit from sharing best practice and greater collaboration among providers	Audit current provision  Convene network  Identify and share good practice  Facilitate joint planning / implementation opportunities	End 2023	Learning and Development Sub-group  GRETB, Schools, GCP, GTM, CYPSC Researcher	Roadmap for Social Inclusion 2020-2025: Ambitions, Goals, Commitments	BOBF Trans Goals 1, 2 and 4: Support Parents, Earlier Intervention and Prevention and Ensuring Quality Services  Registration of School Age Services Regulations (2018)
Promoting Trauma Informed Practice	That practitioners employ a trauma informed response in their work with children and young people	Proportion of services reflecting a trauma informed approach in their SOPS / Practice Guidance	That 100% CYPSC member organisations access trauma informed practice training	Host Seminar for Member Orgs on trauma Informed Practice  Develop roadmap for mainstreaming trauma informed practice	End 2023	Learning and Development Sub-group  Tusla PPFS, PCCC Psychology, HSE, Schools, GTM		BOBF Trans Goals 4: Ensuring Quality Services

## Action Plan for Galway Children and Young People's Services Committee

### Outcome 3: Safe and Protected from Harm

Priority Area	Objective(s)	Indicators	Target	Activities	Timeframe for completion	Lead Responsibility and partners	Link to other plans	Linked to other national outcome(s) or transformational goals
Supporting Parents	That parents and families are informed about local services	Number of service profiles on website  Number of facebook posts  Proportion of services contributing	75 service profiles on website  To release 2 posts every week  That 100% CYPSC member organisations, sub-group member organisations and working partners contribute	Continue to update and promote www.phg.ie  Continue to service phg.ie facebook service  Continue to collect service profiles	Ongoing	PPFS Sub-Group  Tusla FS, CFSN Coordinators, CYPSC, all CYPSC member organisations	Tusla Parenting Strategy	BOBF Trans Goals 1, 2, 4 and 6: Support Parents, Earlier Intervention and Prevention and Ensuring Quality Services; interagency collaboration
	Map and Coordinate Parenting Programmes	Proportion of services participating	That 100% of PPFS Sub-group services respond to survey  That 100% of PPFS Sub-group services attend briefing on findings and contribute to recommendations	Design and circulate survey to service providers  Analyse findings and summarise  Agree recommendations for future delivery	2021, 2022 and 2023	PPFS Sub-Group  Tusla FS, CFSN Coordinators, CYPSC Researcher, all CYPSC member organisations	Tusla Parenting Strategy  DCYA Directive	BOBF Trans Goals 1, 2, 4 and 6: Support Parents, Earlier Intervention and Prevention and Ensuring Quality Services; interagency collaboration
	Promote Parenting Programmes as Universal Services	Audit of parents motivation for attendance	Report on motive and barriers to attendance  Reflect learning in promotion	Research motives of participants and barriers overcome  Agree promotion strategy	Ongoing	PPFS Sub-Group  Tusla FS, CYPSC Researcher, all CYPSC member organisations	Tusla Parenting Strategy	BOBF Trans Goals 1 and 2: Support Parents; Earlier Intervention and Prevention



## Action Plan for Galway Children and Young People's Services Committee

### Outcome 3: Safe and Protected from Harm

Priority Area	Objective(s)	Indicators	Target	Activities	Timeframe for completion	Lead Responsibility and partners	Link to other plans	Linked to other national outcome(s) or transformational goals
	Continue to promote Meitheal as a Best Practice Model	Number of Meitheal training opportunities  Number of Meitheals Requested	Meitheal training delivered at least 1 time per year  Number of Meitheals Requested remains above / in line with national average	Deliver training opportunities  Continue to showcase model	Ongoing	PPFS Sub-Group  All CYPSC member organisations	Tusla National Service Delivery Model	BOBF Trans Goals 2 and 6: Earlier Intervention and Prevention; effective collaboration

## Action Plan for Galway Children and Young People's Services Committee

### Outcome 4: Economic Security and Opportunity

Priority Area	Objective(s)	Indicators	Target	Activities	Timeframe for completion	Lead Responsibility and partners	Link to other plans	Linked to other national outcome(s) or transformational goals
Providing opportunities to develop employability skills outside of school	To increase capacity among practitioners working with young people to include STEAM activities within programmes.	Number of practitioners trained in STEAM work  Number of times STEAM approaches used to frame engagement with young people	That 25 practitioners would attend STEAM training (10 new; 15 refresher)  That 150 young people will participate in youth work initiatives using STEAM	Delivery of STEAM training to practitioners  Source and provide STEAM materials  Build partnerships with youth services and education institutions  Establish links with corporate sector	Ongoing	Foróige and Tusla FS  Galway STEAM Steering Committee	National Youth Strategy	BOBF Trans Goals 4 and 6: Ensuring Quality Services; Effective collaboration
Homelessness Protocols	That Protocols are in place between Tusla, Local Authorities and Service Providers in relation to services to Homeless families	Agreement of Protocols	That Galway City Protocol is reviewed  That a protocol with Galway County Council is agreed	Review, amend and agree Protocols	2022	Tusla, Galway City Council and Galway County Council  COPE Galway, Simon Community Galway and PMcVerry Trust	Rebuilding Ireland	BOBF Trans Goals 4 and 6: Ensuring Quality Services; Effective collaboration

## Action Plan for Galway Children and Young People's Services Committee

### Outcome 5: Connected Respected and Contributing to their World

Priority Area	Objective(s)	Indicators	Target	Activities	Timeframe for completion	Lead Responsibility and partners	Link to other plans	Linked to other national outcome(s) or transformational goals
Youth Participation	That young people are supported to contribute to CYPSC and its sub-groups through a supported structure	The establishment of a youth participation structure  Youth representation on CYPSC and sub-groups	To establish a youth participation structure for CYPSC	Consult existing youth participation structures  Design and agree a structure  Design and agree supports required  Establish structure	End 2021	Connected, Respected and Contributing Sub-Group and Comhairle na Nóg  Schools and CYPSC committee	CYPSC Youth Participation Guidance  Tusla Participation Strategy	BOBF Trans Goal 3: Listen to and Involve Children and Young People
	To promote youth engagement within CYPSC member organisations	Development of a Youth Consultation Charter	To agree a Youth Consultation Charter	Consult existing youth participation structures  Design and agree charter	End 2022	Connected, Respected and Contributing Sub-Group CYPSC Youth Participation Structure  CYPSC committee	CYPSC Youth Participation Guidance  Tusla Participation Strategy	BOBF Trans Goal 3: Listen to and Involve Children and Young People
Language and Translation	To raise awareness among services of the needs of children and young people who do not use English as a first language	Number of organisations attending training	>75% of member organisations attend training	Deliver awareness raising workshop that outlines best practice	End 2022	Údarás na Gaeltachta and Connected, Respected and Contributing Sub-Group  CYPSC Members	Roadmap for Social Inclusion 2020-2025: Ambitions, Goals, Commitments	BOBF Trans Goal 4: Ensuring Quality Services
	That all member organisations benefit from available translation services	Establishment of a Database of Translators	100% CYPSC member organisations contribute to Database	Audit existing translation resources  Share Database	End 2023	Connected, Respected and Contributing Sub-Group  CYPSC Member Organisations	Roadmap for Social Inclusion 2020-2025: Ambitions, Goals, Commitments	BOBF Trans Goal 4: Ensuring Quality Services

## Action Plan for Galway Children and Young People's Services Committee

### Outcome 5: Connected Respected and Contributing to their World

Priority Area	Objective(s)	Indicators	Target	Activities	Timeframe for completion	Lead Responsibility and partners	Link to other plans	Linked to other national outcome(s) or transformational goals
Inclusion of Young People	That services understand how children and young people from different cultural backgrounds experience their services	Completion of Report on Experiences of Children and Young People	Research and share a Report on the experiences of children and young people from different ethnic and cultural backgrounds	Agree research methodology Design research tools Undertake research Present findings	End 2021	Connected, Respected and Contributing Sub-Group  CYPSC Youth Participation Structure	Roadmap for Social Inclusion 2020-2025: Ambitions, Goals, Commitments	BOBF Trans Goal 3: Listen to and Involve Children and Young People
	To improve how children and young people from diverse cultural and ethnic backgrounds experience services	Adoption of a Code of Practice	Develop a Code of Practices for Services (informed by Report on Experiences of Children and Young People)	Agree lessons Agree means of Operationalising Draft Code Adoption of Code Evaluation of Application	End of 2022	Connected, Respected and Contributing Sub-Group  CYPSC Youth Participation Structure	Roadmap for Social Inclusion 2020-2025: Ambitions, Goals, Commitments	BOBF Trans Goal 3: Listen to and Involve Children and Young People
	That service spaces are more child and young people friendly	Proportion of member organisations reporting changes to service spaces	That 100% of CYPSC Member Organisations would undertake an audit of their service space	Research best practice Promote among CYPSC Member Organisations, Sub-Group members and working partners	End 2022	Connected, Respected and Contributing Sub-Group  CYPSC Youth Participation Structure	Tusla Participation Strategy	BOBF Trans Goal 3: Listen to and Involve Children and Young People

## Action Plan for Galway Children and Young People's Services Committee

### Outcome 5: Connected Respected and Contributing to their World

Priority Area	Objective(s)	Indicators	Target	Activities	Timeframe for completion	Lead Responsibility and partners	Link to other plans	Linked to other national outcome(s) or transformational goals
	That young people have opportunities to participate in structured social / fun activities outside of sport	Number of children participating in Music Generation projects	That 1 additional Music Generation Project is supported in the city and 1 additional Music Generation project is supported in the county	Delivery of music tuition, instrument bank and performance opportunities	End 2023	Connected, Respected and Contributing Sub-Group  GRETB	Roadmap for Social Inclusion 2020-2025: Ambitions, Goals, Commitments	BOBF Trans Goal 4: Ensuring Quality Services

## Action Plan for Galway Children and Young People's Services Committee

### Change Management

Priority Area	Objective(s)	Indicators	Target	Activities	Timeframe for completion	Lead Responsibility and partners	Linked to other national outcome(s) or transformational goals
Commitment to Working Together	That statutory, community and voluntary organisations continue to commit to interagency working through CYPSC	Staff committed Expertise shared Resources committed	That CYPSC Member Organisations will contribute fully	Attend meetings Participate in Sub-groups Share knowledge and expertise	Ongoing	All Member Organisations	BOBF Trans Goal 6: Promoting Collaboration
Promotion of Health and Wellbeing	That we reflect an awareness of Health and Wellbeing in the way we work	Proportion of meetings where Healthy Ireland Healthy Meetings guidelines applied	That 100% of CYPSC meetings and events be in line with Healthy Ireland Healthy Meetings guidelines	Circulate HIHM guidelines Apply guidelines to CYPSC practice	Ongoing	CYPSC Chair, CYPSC Coordinator, all Member Organisations	Healthy Ireland Framework Goal of increasing the proportion of people that are healthy at all stages of life
Promotion of Learning	That member organisations showcase local expertise	Proportion of CYPSC meetings that include a learning element	That 50% of CYPSC meetings include a learning element	Schedule presentation of work during meetings	Ongoing	CYPSC Chair, CYPSC Coordinator, All Member Organisations	BOBF Trans Goal 6: Promoting Collaboration
Development of new Child / Youth Spaces	That organisations work in partnership in the development of new Child/Youth Spaces	Proportion of new spaces being developed jointly	All 100% of new spaces are development jointly	That a Protocol is agreed re consulting the committee in advance of planning new spaces	End 2021	All Member Organisations	BOBF Trans Goal 6: Promoting Collaboration
Increase Focus on Disadvantage	That the focus of new services or resources for young people is informed by evidence re levels of need	Focus on disadvantaged areas Focus on disadvantaged cohorts	That evidence of need informs the focus of new services	That a Protocol is agreed re consulting the committee in advance of planning new services	End 2021	All Member Organisations	BOBF Trans Goal 6: Promoting Collaboration

## Action Plan for Galway Children and Young People's Services Committee

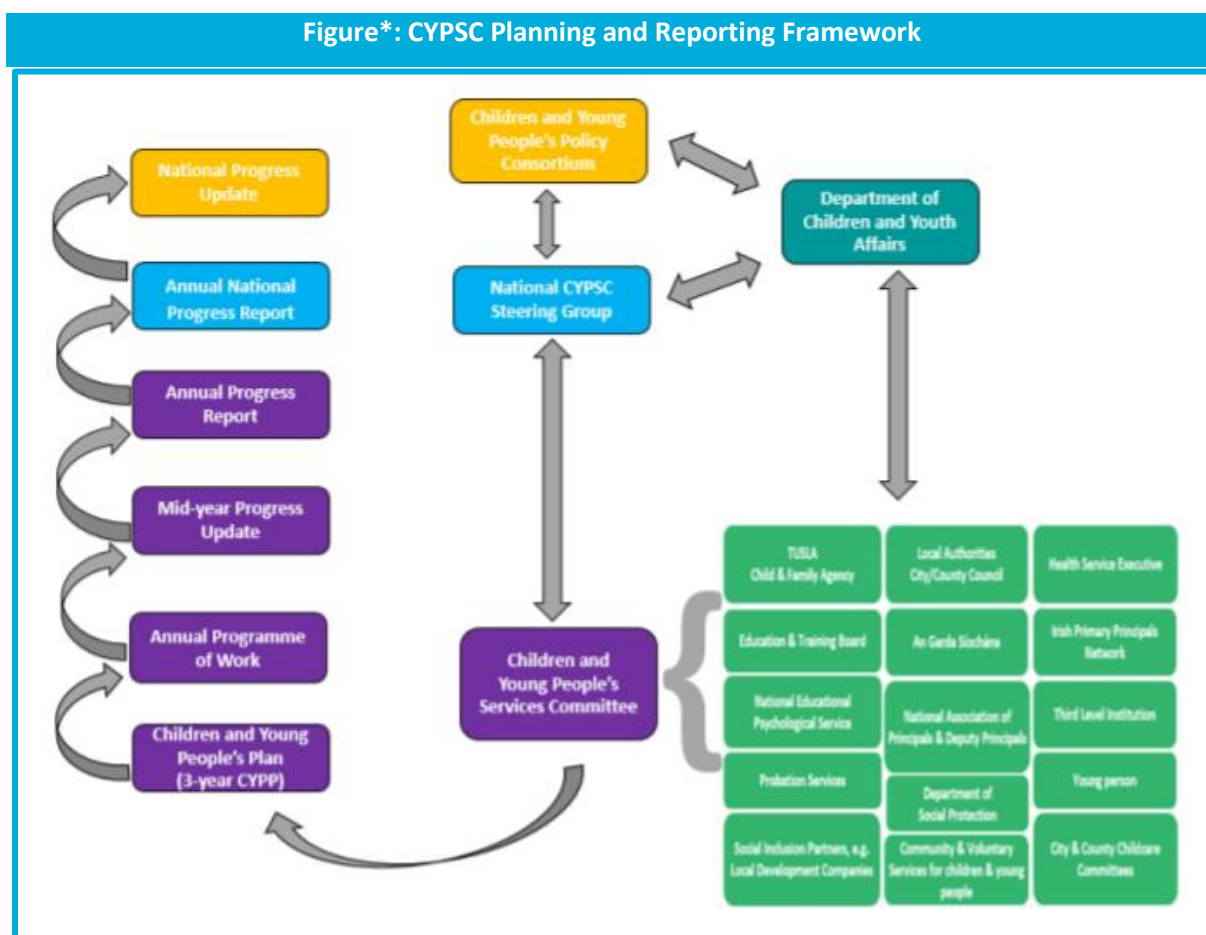
### Change Management

Priority Area	Objective(s)	Indicators	Target	Activities	Timeframe for completion	Lead Responsibility and partners	Linked to other national outcome(s) or transformational goals
Become more Culturally Aware	That member Organisations increase their cultural awareness	Number of organisations attending cultural awareness training	That 6 member organisations would attend cultural awareness training	Deliver cultural awareness training opportunities to Member Organisations	End 2021	CYPSC Coordinator  Galway County Traveller Interagency Group  Galway City Traveller Interagency Group	BOBF Trans Goal 4: Ensuring Quality Services  'Framework for Public Bodies in Responding to Traveller Ethnicity
Development of Strategic Advocacy Role	That CYPSC agrees a role in relation to advocacy	That a common, shared, understanding is reached and recorded	Topic scheduled as an agenda item	Discuss and agree on CYPSC role in relation to advocacy	End 2021	CYPSC Chair, All CYPSC Member Organisations	BOBF Trans Goal 4: Ensuring Quality Services
Public Sector Duty	That CYPSC work reflects the obligations of Public Sector Duty	Demonstration of 'Assess, Address, Report' elements in CYPSC work	That CYPSC 'Assesses, Addresses and Reports' on activities in line with Public Sector Duty Act	Assess CYPSC Activities  Address Concerns arising  Report on same	Ongoing	CYPSC Chair, CYPSC Coordinator, ALL Member Organisations	BOBF Trans Goal 4: Ensuring Quality Services

## Section 7: Monitoring and Review

Sub-groups will be established to progress actions within the Action Plan. Data relating to indicators specified in the plan will be collected by each sub-group as appropriate. Each active sub-group will present a progress report at meetings of the Galway CYPSC. Challenges arising will be noted and addressed at committee meetings.

In line with the national CYPSC Planning and Reporting Framework, Galway CYPSC will produce an Annual Programme of Work and a subsequent Annual Progress Report for each of the three years comprising the span of this plan. These reports will be compiled by the CYPSC Coordinator following consultation with sub-group convenors.



Source: CYPSC Planning and Reporting Framework: Version 1.0, June 2017

Mid-Year Progress Reviews will be completed and considered at the first CYPSC meeting thereafter. Following consideration of the review, the committee may choose to amend targets and / or actions. All reports will be submitted to the Tusla national CYPSC office and for the attention of the CYPSC National Steering Group and the Department of Children and Youth Affairs.



## Section 8: Appendix

### Terms of Reference for Galway Children and Young People's Services Committee

#### 1. Purpose

The purpose of Galway Children and Young People's Services Committee (CYPSC) will be to provide strategic direction and leadership to ensure effective interagency co-ordination and collaboration in order to achieve the best outcomes for all children and young people in Galway.

#### 2. Galway CYPSC Vision and Principals

The vision of Galway CYPSC is that outcomes for Children and Young People are improved through inter-agency working.

The principles that underpin the work of Galway Children and Young People's Services Committee are:

- That Galway CYPSC puts the best available evidence at the heart of planning and reporting processes.
- That Galway CYPSC planning is outcomes based, i.e. its purpose is to achieve agreed outcomes.
- That Galway CYPSC members own and direct the work of the committee and hold themselves and others accountable to the common agenda as expressed in this plan.
- Galway CYPSC is committed to collecting and using data to make informed decisions. Alongside quantitative data, the committee recognises the value of qualitative research to understand the experiences, meaning and views of children and young people and service providers.
- Galway CYPSC stakeholders are open to learning through reflection on how well the work has lived up to performance expectation.
- Regular and open communications will flow - bottom up, top down and across the CYPSC initiative.
- The work of Galway CYPSC will be children-centred and children and young people will participate in a structured and supported way.
- Galway CYPSC has a commitment to equality and human rights and this will be reflected in its work.

#### 3. Term

These Terms of Reference will be effective for the period of implementation of the Galway Children and Young People's Plan 2021 – 2023.

#### 4. Membership

Galway CYPSC will comprise:

Member Organisation	Representative	
Tusla Child and Family Agency	John Donnellan	<i>Chair</i>
Galway City Council	Caitríona Morgan	<i>Vice Chair</i>
Galway County Council	Ciarán Coyne	<i>Vice Chair</i>
An Garda Síochána	Ciara Moran	
COPE Galway	Dr. Carol Baumann	
Family Resource Centres, Galway	Belinda Mullins	
Foróige	Dick O'Donovan	
Galway Childcare Committee	Stacey Forde	
Galway City Partnership	Declan Brassil	
Galway Rape Crisis Centre	Cathy Connolly	
Galway Roscommon Education and Training Board	Sara Ní Chuirreáin	
Galway Traveller Movement	Margaret O'Riada	
HSE, Area Medical Office	Dr. Catherine Kinsella	
HSE, Child and Adolescent Mental Health Services	Dr. Gary Mc Donald	
HSE, Disability Services	Mary O'Donnell	
HSE, Health and Wellbeing Division	Evelyn Fanning	
HSE, Health and Wellbeing Division	Anne O'Neill	
HSE, Psychology	Dr. Clare Gormley	
HSE, Public Health Nursing	K. Malee / C. O'Connell	
Irish Primary Principals' Network	Frank Keane	
Jigsaw	Sarah Simkin	
National Association of Principals and Deputy Principals	Margaret Griffiths	
National Educational Psychological Service	C. Burke / Dr. M. McMahon	
NUI Galway Students' Union	Pádraic Toomey	
The Probation Service	John Mannion	
Tusla, Child Protection	Julie O'Donnell	
Tusla, Education Support Services	Bridget McGreal	
Tusla, Partnership, Prevention and Family Support	Susan Forde	
Údarás na Gaeltachta	Hannah Ní Dhoimhín	
Western Region Drugs and Alcohol Task Force	Michéal Durcan	
Youth Work Ireland, Galway	Deirdre Bermingham	

#### 5. Roles and Responsibilities

##### Chair of the CYPSC

The Galway CYPSC will be chaired by the Tusla Area Manager. The key responsibilities of the Chair include:

- To provide leadership and direction for the Committee

- To ensure the effectiveness of the Committee in all aspects of its role
- To take a lead role in determining and reviewing the process regarding the composition, structure and performance of the Committee

### Vice Chairs of the CYPSC

The Local Authority representative from Galway City Council and from Galway County Council will act as Vice Chairs of the CYPSC. The Vice Chairs will support the Chairperson in carrying out his/her responsibilities. The Vice Chairs will deputise for the Chairperson when required.

### The CYPSC Co-ordinator

The key responsibilities of the Co-ordinator include:

- To communicate a clear sense of purpose and direction on behalf of the Committee
- To foster and develop relationships with key personnel, including committee members and other stakeholders
- To ensure the collection, provision and reporting of relevant data and information
- To organise and administer meetings of the CYPSC and its subgroups

### CYPSC Members

The responsibilities of CYPSC members include:

- Understanding the role of CYPSC and how its structures work
- Inputting to the agenda of the CYPSC
- Representing their department / organisation / programme / sector
- Sharing professional observations, knowledge and experience
- Advocating on behalf of their service users
- Feeding back to their department / organisation / programme / sector on the work of CYPSC
- Ensuring their department / organisation / programme / sector is contributing to the delivery of relevant CYPSC projects through contributions to CYPSC Sub-Groups and Task Groups
- Advising on how the CYPSC can engage with children, young people and families

## 6. Meetings

- All meetings will be chaired by the Tusla Area Manager for Galway and Roscommon.
- A meeting quorum will be 16 members of the CYPSC.
- Decisions will be made by consensus. Where consensus is not possible, the CYPSC Chairperson will make the final decision.
- Where a member is unable to attend, they may nominate a representative who has decision-making responsibilities.
- Meeting agendas and minutes will be provided by the CYPSC Coordinator.
- Meetings will be held 6 times per year and will last 2 hours.
- If required, task group meetings will be arranged outside of these times at a time convenient to members.

## 7. Amendment, Modification or Variation

The Terms of Reference may be amended, modified or varied in writing after consultation and agreement at a CYPSC meeting.

