



**County Carlow
Children and Young People's
Services Committee**

**Children and Young People's Plan
2017 - 2019**

Contact

The Carlow Children and Young People's Services Committee welcomes comments, views and opinions about our Children and Young People's Plan.

Please contact: Mairéad Maddock
Carlow Children and Young People's Services Committee Co-ordinator
Tusla Child and Family Agency
Athy Road
Carlow
Mairead.Maddock@Tusla.ie

085 789 7268

Copies of this plan are available on: www.cypsc.ie

Contents

Foreword	4
Section 1: Introduction	5
Background to Children and Young People’s Services Committees.....	6
Who we are	7
Achievements to date.....	8
How the Children and Young People’s Plan was developed	9
Section 2: Socio-Demographic Profile of County Carlow	9
General County and Demographic Profile.....	9
Specific Issues affecting Children and Young People	16
Section 3: Overview of Services to Children and Families in County Carlow	18
Section 4: Local Needs Analysis in County Carlow	23
Section 5: Summary of Children and Young People’s Plan for County Carlow	28
Section 6: Action Plan for County Carlow	31
Section 7: Monitoring and Review	44
Section 8:	
Appendices.....	45

Foreword by the Chair of Carlow and Young Peoples Services Committee

It gives me great pleasure to present the Carlow Children and Young People's Services Committee (CCCYPSC) Children and Young People's Plan which covers the three years from 2017 to 2019. This plan underpins the hard work of the members of CCCYPSC and it captures the initiatives and actions planned for Carlow to meet the five national outcomes for children in accordance with "Better Outcome Brighter Futures" The National Policy framework for children and young people 2014-2020.

Carlow has grown and changed significantly over the last number of years. There has been a movement of people into Carlow in particular the growth of new communities. The recent census highlighted a higher increase in the population of Carlow than the national average. Education levels are still somewhat below national levels and there are also marginally higher numbers of children and young people with a disability than nationally.

Carlow has been severely impacted by the down turn of the economy and as a result many of our children and young people in the county experience social disadvantage.

Overall there are some pockets of extreme social disadvantage across the county, particularly in Carlow town, Graiguecullen and Tullow and also within the two minority Traveller and Rohingya communities. Meeting the needs of the most marginalised children and young people in these communities will be critical to the success of this plan.

At this time of increased demand for services accompanied by cost containment measures in relation to resources, the need for a strategic approach to interagency working has never been more important for children, young people and families in Carlow.

We acknowledge the commitment of the Department of Children and Youth Affairs in supporting CCCYPSC to plan and coordinate initiatives and services across Carlow towards better outcomes for our children and young people.

This plan presents a coordinated interagency approach to the delivery of services to children and young people in Carlow from 2017 to 2019 by all agencies working with children and young people in Carlow.

We welcome feedback in relation to this plan and we are committed to reviewing it at regular intervals.

On behalf of CCCYPSC, I look forward to better developmental outcomes and a better future for our children and young people

Marie Kennedy

Area Manager

Carlow, Kilkenny and South Tipperary
Tusla Child and Family Agency

Acronyms and Abbreviations

CAMHS	Child and Adolescent Mental Health Service
(CC)CYPSC	(County Carlow) Children and Young People's Committee
(C)CCC	(Carlow) County Childcare Committee
CCDP	County Carlow Development Partnership
CRYS	Carlow Regional Youth Services
DCYA	Department of Children and Youth Affairs
DEIS	Delivering Equality in Schools
EWO	Education and Welfare Officer
GMS	
NEWS	
NEPS	National Educational Psychological Service
PHN	Public Health Nurse
SCP	School Completion Programme
SIM	Social Inclusion Measures
SWO	Social Welfare Office

Section 1: Introduction

Purpose

The central purpose of a Children and Young People's Services Committee is to ensure effective interagency co-ordination and collaboration to achieve the best outcomes for all children and young people in its area. This is achieved through enhanced planning, co-ordination and oversight of policy implementation, planning and service provision locally.

Children and Young People's Services Committees (CYPSCs) act as the structure whereby services can work together in a systematic manner to achieve shared goals and which bridge national policy with local provision. CYPSCs work towards the five national outcomes for children and young people in Ireland. These are that children and young people

1. *Are active and healthy, with positive physical and mental wellbeing*
2. *Are achieving full potential in all areas of learning and development*
3. *Are safe and protected from harm*
4. *Have economic security and opportunity*
5. *Are connected, respected and contributing to their world*

Policy Context

The *Agenda for Children's Services: A policy handbook*, published in 2007 outlined government policy, setting out the strategic direction and key goals of public policy in relation to children's health and social services. This policy influenced and informed the development of the Children's Services Committees as structures for development local planning to promote national outcomes for children and young people.

In 2014 the national policy framework for children & young people 2014-2020, *Better Outcomes Brighter Futures* was launched by the Department of Children and Youth Affairs (DCYA). Under this framework the remit of the Children's Services Committees was expanded to include young people up to the age of 24 years and the committees were re-named the Children & Young People's Committees (CYPSCs) to reflect this.

The Better Outcomes Brighter Futures framework sets out transformational goals which need to be achieved to achieve the National Outcomes for children and young people i.e.:

1. Support Parents
2. Earlier Intervention & Prevention
3. Listen to and involve children and young people
4. Ensure quality services
5. Support effective transitions
6. Cross- Government and interagency collaboration and coordination

It also identifies the Government department/agencies responsible for the actions required to achieve the goals. The *Blueprint for the Development of Children and Young People's Services Committees* uses the

guiding principles of Better Outcomes Brighter Futures to underpin the work of the CYPSCs and the CYPSC membership is made up of the main statutory providers of services to children, young people and families in the area along with community and voluntary organisations providing significant services locally. The CYPSC plan of work is based on these goals and principles.

In 2014 Tusla the Child & Family Agency, dedicated to improving wellbeing and outcomes for every child, was officially launched and the chair of the CYPSCs became the responsibility of Tusla.

In 2015 the Department of Children and Youth Affairs published its High-level Policy Statement on Supporting Parents and Families - '*Parenting and Family Support*' - building on the first Transformational Goal in Better Outcomes Brighter Futures and '...setting the policy context for a cohesive policy approach among statutory bodies in partnership with one another and with non-governmental organisations to achieve greater integration in the provision of '*Parenting and Family Support*'. This on-the ground multi-agency working can be facilitated through participation on the CYPSCs.

Putting People First - Action Programme for Effective Local Government (October 2012) and the *Local Government Reform Act 2014* led to the establishment of Local Community Development Committees (LCDC) for the purpose of bringing a more co-ordinated and joined-up approach to local/community development at local level. The LCDC in each county has developed a 6-year Local Economic and Community Plan to promote the local and community development of the relevant local authority area through a more coordinated and collaborative approach to planning and service delivery. The work of CYPSC is linked to this plan through a joint protocol between itself and the LCDC, ensuring that local government is working in collaboration with the CYPSC members on common actions for children, young people and families.

National Strategy for Research and Data on Children's Lives 2011-2016 guiding and supporting the development of research and data on children's lives has worked towards ensuring quality data available to services planning for and working with children and young people and the CYPSCs perform a valuable role in the dissemination of this data in their local areas.

The continued development of policy in affecting children's lives – *The National Youth Strategy 2015-2020*, *National Strategy on Children and Young People's Participation in Decision-Making 2015-2020*, *National Early Years Strategy - Birth to 6 years* (in development) all underpin the continuing development and workings of the Children & Young People's Services Committees.

Key reports such as the *Kilkenny Incest Case*, the *Roscommon Case*, the *Commission to Inquire into Child Abuse* and the *Report of the Independent Child Death Review Group* have all provided evidence that listening to children and young people, as well as engaging in interagency co-operation in the provision of services will help to ensure that past failures are not repeated.

Background to Children and Young People's Services Committees

Children and Young People's Services Committees in Ireland

The Office of the Minister for Children and Youth Affairs (OMCYA), now the Department of Children and Youth Affairs, established the Children and Young People's Services Committees in 2007 with the purpose of improving outcomes for children and families at local and community level. Since then CYPSCs have increased incrementally in number and are a key structure identified by Government to plan and co-ordinate services for children and young people in every county in Ireland.

CYPSCs bring together a diverse group of agencies in local county areas to engage in joint planning of services for children and young people. All major organisations and agencies working locally on behalf of children and young people are represented. These committees work to improve the lives of children, young people and families at local and community level through integrated planning and improved service delivery.

Better Outcomes, Brighter Futures: the National Policy Framework for Children and Young People 2014 – 2020 underscores the necessity of interagency working and tasks Children and Young People's Services Committees with a key role in this regard.

Children and Young People's Services Committee in County Carlow

On 1st March 2010 the first meeting of the County Carlow Children and Young People's Services Committee took place. This was the culmination of the work of the then HSE Childcare Manager and the Carlow County Development Board to formalise and develop interagency co-operation in the provision of services for children and young people in the county. In February 2011 a co-ordinator was employed and the CYPSC developed its first Children and Young People's Plan 2011-2013 (C & YP), with the aim of improving the lives of children, young people and families at local and community level, through participation and consultation with children and young people, integrated planning, working and service delivery.

The Children and Young People's Plan was completed and reviewed in 2013 and the CCYPSC then entered discussions with service providers in Co. Kilkenny to consider how best to ensure that services were provided to children and young people in both counties. Having decided to establish separate CYPSCs in both counties the re-established County Carlow CYPSC held its first meeting in October 2015 under the guidance of the *Blueprint for the Development of Children and Young People's Services Committees (Department of Children and Youth Affairs, June 2015)*.

In January 2016 the CCYPSC engaged TSA consultants to conduct an Audit of Services and Analysis of Needs of Children and Young People in the County and the Children and Young People's Plan 2017-2019 was developed.

Who we are

Name	Position/Organisation
Marie Kennedy, <i>Chairperson</i>	Area Manager), Tusla Child and Family Agency
Margaret Moore, <i>Vice Chairperson</i>	Administrative Officer, Carlow County Council
Aine Gahan	Manager, Carlow County Childcare Committee
Martina Osborne	Youthreach Co-ordinator, KK/CW ETB
Inspector Audrey Dormer	An Garda Síochána
Kathryn Wall	C.E.O., Carlow Regional Youth Services
Marian Dowd	Project Manager, Barnardos
Niall Morris	Director of Services, St. Catherine's Community Centre
Karl Duffy	SIM Manager, Carlow Co. Development Partnership
Leo Hogan	Principal, C.B.S, Carlow – National Association of Principals and Deputy Principals (NAPD)
Bláthnaid McDermott	Principal, Rathoe N.S., Co. Carlow – Irish Primary School Principals
Anne Shortall	Manager, Bagenalstown Family Resource Centre
Billy Kavanagh	Senior Probation Officer Probation & Welfare Service
Dr. Catherine O'Sullivan	St. Patrick's, Carlow College (3 rd level)

Achievements to date

Since its establishment in 2010 County Carlow CYPSC has been central to promoting interagency working in the county.

Among its achievements to date have been:

- Development and implementation 3- year Children and Young People's Plan 2011-2013
- Development of 3- year Children and Young People's Plan 2017-2019
- Engagement in consultation with significant number of children, young people and parents through a variety of methods to identify priorities for the Children and Young People's Plans
- Engagement of a broad range of agencies through membership of the CYPSC and of its subgroups since February 2011
- The establishment of a weekly email newsletter to share information and news with members agencies
- The development and launch of a Protocol to Respond to Exceptional Events and Critical Incidents for Children and Young People
- The development of a Calendar of Parenting Programmes and Family Support for the County which is updated on a quarterly basis
- Working with the Local Community Development Committee to ensure its work with children and families is tied into the County Carlow Local Economic and Community Plan 2016-2021
- CYPSC sits on the Carlow Suicide Prevention Planning Group and on the subgroup tasked with developing the Emergency Event Management Protocol for Carlow
- Working with Tusla Partnership, Prevention and Family Support personnel to facilitate the roll-out of Meitheal programme in County Carlow
- The gathering and dissemination of statistics relevant to children and families in Carlow

The impact of the work of the CYPSC since 2010 has resulted in the strengthening of communication and interagency working among the agencies delivering services to children and families in County Carlow at a time during which there have been many changes in how services are delivered, e.g. the setting up of Tusla, the changes to Local Government structures and local community development. CYPSC has facilitated the communication of these changes and continues to work on strengthening relationships among the member agencies.

The development of data collection and dissemination through CYPSC to inform the work of those providing the services to children and families has been a useful outcome for agencies.

The consultation with children and young people by CYPSC has been a positive first step in ensuring that children and young people have a say in what their needs are and what actions can be taken to improve their lives. This participation of children and young people in decisions that affect their lives is a priority for the ongoing work of the CYPSC.

How the Children and Young People's Plan was developed

The County Carlow CYPSC undertook preparation of this plan in a number of ways.

TSA consultants were engaged and carried out the following:

- A mapping exercise of services and initiatives for young people
- Analysis of service provision across the county
- Geo-mapping to identify where all services are pinpointed with basic information and contact details.
- Identification of gaps in service provision.

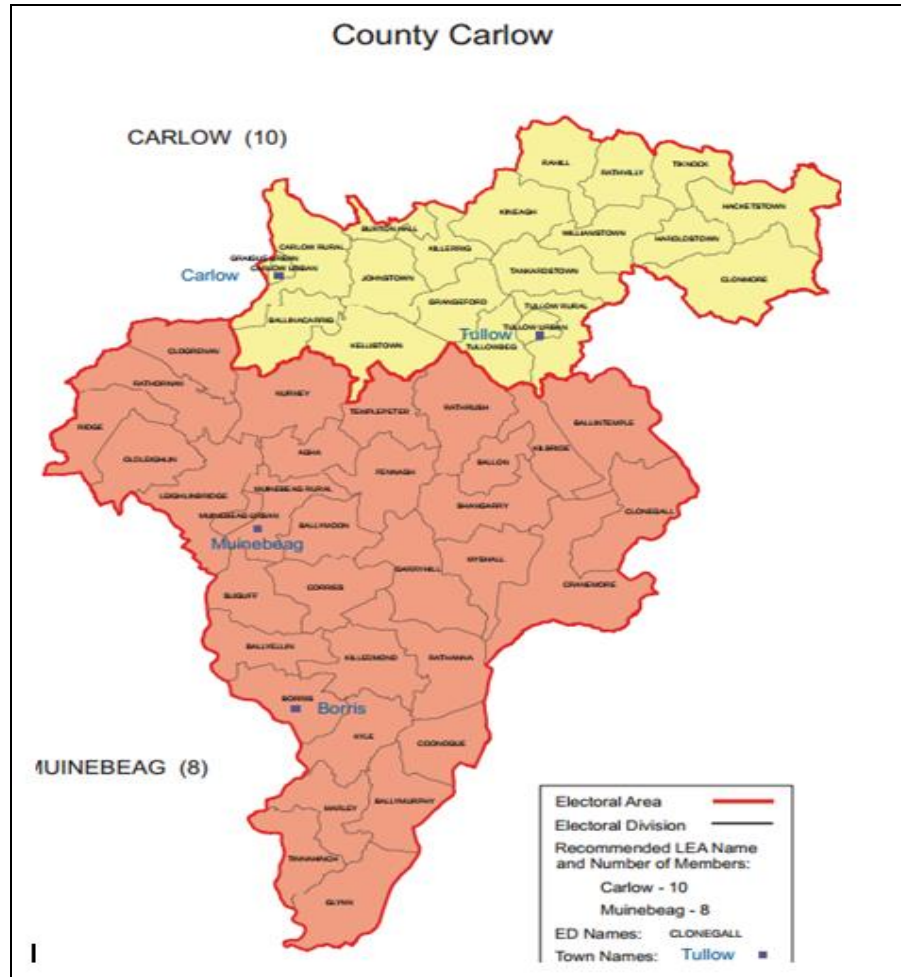
The CYPSC has been engaged in extensive consultations with children and young people in the county in a number of ways:

- The County Childcare Committee conducted a survey of pre-school children in a variety of Early Years settings
- 3rd class and 6th class children in a number of schools completed questionnaires (which had been designed using the Bronfenbrenner model of the child's world) about living in Carlow
- Groups of young people at the Comhairle na nÓg AGM worked on questionnaires and also offered solutions to some problems they identified
- Parents were consulted individually and in groups
- Online surveys were also used to collect the views of parents, students and other young people
- A wide range of agencies were consulted individually
- The process was facilitated in the early stages when the CYPSC had a facilitated session to agree the priorities emerging from the consultations

The feedback from these consultations was fed into the work done by TSA

Section 2: Socio-Demographic Profile of County Carlow

General County and Demographic Profile



County Carlow is an inland county, located in the South East Region and bordered by Counties Wicklow, Wexford, Kilkenny, Laois and Kildare. The County is 943 sq. km. in area. The principal towns in the county are Carlow, Tullow, Muinebheag, Hacketstown and Borris. Carlow town has a pivotal location as a county town in the South East Region with a strong relationship to the Midlands and South Leinster region. The county has two institutions of higher education i.e. IT Carlow and Carlow College, the National Crops Biotechnology Research Centre at Teagasc Oak Park, substantial infrastructural developments and proximity to both Dublin and the major transport hubs. Carlow's strategic location close to Dublin has been enhanced by the opening of the M9 motorway from Dublin to Waterford.

The main rivers flowing through County Carlow are the Barrow and Slaney Rivers and their associated tributaries. The main focal points of settlement in the County are along these rivers, which have long been important corridors of settlement, defence and transportation. Carlow is a predominantly rural county with a population of 54,612 individuals and 19,496 households (Census 2011). Its population accounts for 1.19% of the entire population of the State (4,588,252).

Age profile

The percentage of the population of Carlow aged 17 years or less is similar to that in the State: 14,139 individuals (25.88% of the county population) are in this age category; the corresponding figure for the State is 25.86%. However, the census data is now five years old. The age profile for each year up to age 17 is presented below (Table 2.1). The data indicates a slight increase in the birth rate, with 898 children aged less than one year in 2011. HSE data for births in County Carlow shows that 948 births were recorded in 2012.

AGE	MALE	FEMALE	TOTAL
0	469	429	898
1	414	430	844
2	455	424	879
3	476	440	916
4	416	392	808
5	400	411	811
6	442	407	849
7	386	457	843
8	418	408	826
9	412	360	772
10	401	362	763
11	415	360	775
12	397	373	770
13	360	351	711
14	361	323	684
15	341	328	669
16	345	321	666
17	336	319	655
TOTAL	7,244	6,895	14,139

Table 2.2 below outlines the proportion of the population in each main age category up to the age of 24 years for County Carlow and for the State. The data indicates that there is a slightly higher proportion of population aged 24 years or under in Carlow, compared with the State average – however this difference is small.

Table 2.2 Age categories (0-24 years) in County Carlow and comparison with State

Age range	Number	% of Carlow population	% State population in age category
0-4 years	4,345	8.0%	7.8%
5 -9 years	4,101	7.5%	7.0%
10-14 years	3,703	6.8%	6.6%
15-19 years	3,390	6.2%	6.2%
20-24 years	3,616	6.6%	6.5%
Total 0-24 years	19,155	35.1%	34.1%

Family profile

In 2011 there were 19,436 households in County Carlow. The table below profiles these households in terms of family type. The family type in Carlow is broadly comparable with the State profile, with a slightly higher percentage of lone parent families as well as slightly more couples with children.

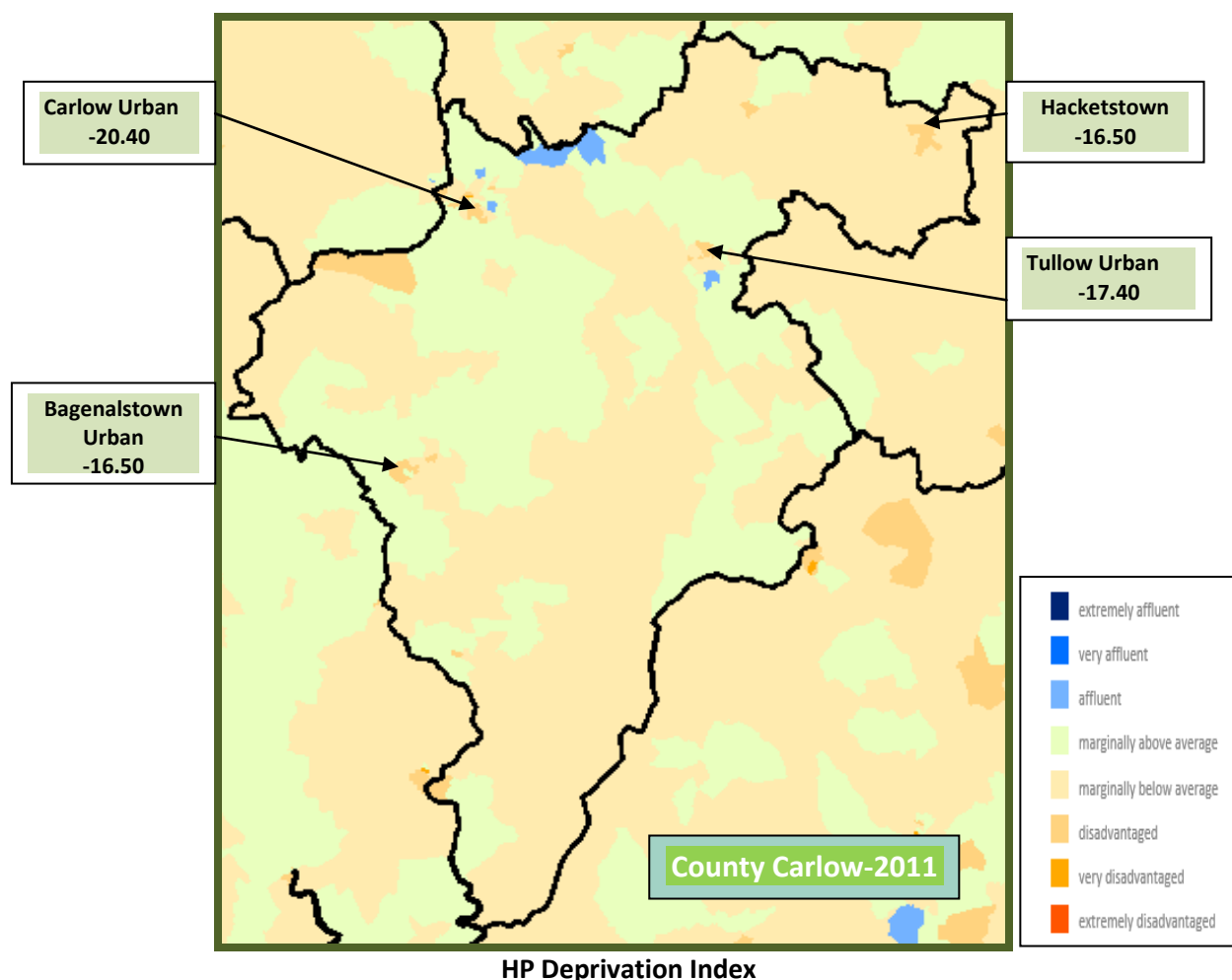
Table 2.3 Family profile in Co Carlow compared with the state

	Carlow		State
	Number	%	%
One Person	4,341	22.3	23.7
Couple without children	3,538	18.2	18.9
Couple with children	7,214	37.1	34.9
Lone parent family	2,174	11.2	10.9
Other	2,169	11.2	11.6
Total	19,436	100.0	100.0

Table 2.4 No of children living in lone parent households in Carlow (Source: *Growing up in Ireland, 2012*)

	Carlow		State
	Number	%	%
Children living in lone parent households	2,443	17.9%	18.3%

Principal economic status



While the County of Carlow overall has a Pobal HP relative deprivation index rating of 3.41% (- 2.28% in 2006) much of the county is below the national average and some of the small areas have are disadvantaged or very disadvantaged, with one small area in the Carlow Urban Electoral Area being rated at - 20.40%

The table below outlines the principal economic status of those aged over 15 years. It indicates a higher level of unemployment, and a higher rate of those unable to work due to permanent sickness or disability than are found in the State overall.

Table 2.5 Population aged 15 years and over by principal economic status

	Male	Female	Total	% Carlow	% State
At work	10,596	8,906	19,502	46%	50%
Looking for first regular job	226	183	409	1%	1%
Unemployed having lost or given up previous job	3,588	1,911	5,499	13%	11%
Student	2,440	2,426	4,866	12%	11%

Looking after home/family	229	4,174	4,403	10%	9%
Retired	2,785	2,383	5,168	12%	13%
Unable to work due to permanent sickness or disability	1,239	1,156	2,395	6%	4%
Other	106	115	221	< 1%	< 1%

Educational attainment

The educational attainment data from CSO 2012 demonstrates that those aged over 15 years in Carlow (who have completed their full-time education) have a lower education attainment compared with the figures for the State.

Table 2.6 Education attainment amongst those aged 15 + years who have completed their full-time education (expressed as a %)

	Carlow %	State
Primary (including no formal education)	17.4%	16.0%
Lower secondary	18.9%	16.6%
Upper secondary	19.0%	34.4%
Third level (degree or higher)	24.3%	30.6%

With regard to school attendance figures, data from Tusla Education Welfare Services show that the rate of school completion to the end of second level is lower than the state average, as indicated below.

Table 2.7 Retention Rates to the Junior and Leaving Certificate 2008 cohort

	Carlow %		State %	
	Junior Cert	Leaving Cert	Junior Cert	Leaving Cert
% of pupils who completed second level school ¹	94.26	86.03	96.89	90.56%

Ethnic profile

Carlow has a higher proportion of population amongst the 'White Irish' category of ethnicity than does the State, and a lower proportion of all other ethnic groups in the CSO categories, with the exception of Travellers: in Carlow, Travellers account for a slightly higher percentage of the population, in comparison with the State average (Table 2.8).

In addition, Traveller children and young people account for a higher than average proportion of the overall population of children: Traveller children account for 1.32% of the

¹ Source: Education Welfare Services Tusla.

population of children in Carlow, which is slightly higher than the proportion of all children in the State accounted for by Travellers, at 1.24%.²

Ethnicity	No. individuals	% Carlow pop.	% of State
White Irish	46,586	86%	84.6%
White Irish Traveller	413	0.8%	0.7%
Other White	4,812	8.9%	9.1%
Black or Black Irish	487	0.9%	1.4%
Asian or Asian Irish	638	1.2%	1.9%
Other	404	0.75%	0.9%
Not stated	845	1.2%	1.6%

Housing

Table 2.9 shows the breakdown of households, by occupancy type, in Carlow in 2011

	Carlow		State
	No. households	%	%
Owner occupied with mortgage	6,669	34%	35%
Owner occupied no mortgage	7,015	36%	34%
Rented from Private Landlord	3,064	16%	19%
Rented from Local Authority	1,701	9%	8%
Rented from Voluntary Body	288	1.5%	1%
Occupied free of rent	295	1.5%	2%
Not stated	333	1.7%	1%

In addition, Carlow County Council statistics indicate that 1,476 children (under 18 years) are living in households deemed to be in need of social housing.

Justice

The number of committals to Irish prisons accounted for by people from Carlow has risen slightly since 2008 (Table 2.10). The data would suggest that Carlow is under-represented in terms of the prison population (*per capita*), however this might be expected given that

² Source: State of the Nation's Children (SONC)

people from urban and city areas tend to be over-represented in the Irish prison population. The figures do not provide an indication of the types of offences committed nor the duration of committal

Table 2.9 Home address by county given by persons committed to Irish prisons 2008-2014³

	2014	2013	2012	2011	2010	2009	2008
Carlow	120	117	146	140	103	95	90
Carlow as % of total prison population	0.89%	0.90%	1.05%	1.00%	0.75%	0.77%	0.82%
Total prison pop	13,408	13,055	13,860	13,952	13,758	12,339	10,928

In terms of juveniles, 196 children and young people were referred to the Juvenile Diversion Programme in 2012 comprising 1.38% of the total juvenile population, which is lower than the State average, at 2.6%. These 196 children came from Carlow (175), Tullow (31), Bagenalstown and Borris (each accounting for six referrals) and Ballon (2 referrals). Tullow is disproportionately represented in this figure, as it accounts for 17% of all referrals, while its population accounts for 7% of the county population.

In May 2016 the Probation and Welfare Service was working with 9 young people in Carlow under the age of 21 years.

Table 2.10 Number of children and young people referred to Garda Juvenile Diversion

	Carlow		State
	No.	% ⁴	%
No. of children under 17 years referred to Juvenile Diversion Programme ⁵	196	1.38%	2.6% ⁶

Specific issues affecting children and young people

Number of children in care

In 2014, out of a total population of children in Carlow of 14,139, 0.66% (or 94 children) were in care. This is a reduction on 2013 figures, which recorded 98 children in care (or 0.69% of the population). However, Carlow town itself has registered an 18% increase in children in care since 2013. In 2014, 80 of the 94 children were from Carlow town (53) and Tullow (27). Tullow has over 3 times the county average number of children in care per head of child population (Tullow accounts for approximately 7% of the total population of Carlow).

The remaining 14 were from Skeoughvosteen (4), Benekerry (3), Old Leighlin (2), and one child from each of the following towns: Bagenalstown, Bunclody, Nurney, Palatine.

³ Source: Irish Prison Service http://www.irishprisons.ie/images/annualstats/county_committals_year_2008_2014.pdf

⁴ The figure for referrals is expressed here as a percentage of children under the age of 17 years in Carlow

⁵ Source: SONC (2012)

⁶ 12,146 children in the State (under the age of 17 years) were referred to the Juvenile Diversion Programme this number is expressed here as a percentage of all children in the State

General health, social welfare and social work status

Table 2.11 Summary of health, welfare and social work statistics for children

	Carlow (No.)	Carlow (%)⁷	State
Children with disabilities in Carlow ⁸	864	6.18%	5.78%
Early intervention referrals (HSE Disability Services)	142 (2016)	-	-
HSE Primary Care Psychology (children seen)	116 (2014)	-	-
CAMHS (children seen)	152 (2014)	-	-
Number treated for deliberate self-harm in St Luke's hospital (0-24 years) ⁹	124 (2013)	-	-
Referrals to social workers (Carlow)	562 (2015) ¹⁰	-	14,139
Number of children in State care	94 (2014)	0.66%	-
% uptake rate of immunisations for 12 mth-olds ¹¹	-	92.5%	91.12%
% uptake rate of immunisations for 24 mth-olds ¹²	-	95.9%	92.9%
% of mothers breastfeeding on hospital discharge ¹³	-	53.6%	55.7%
Admissions to psychiatric units and to child and adolescent units ¹⁴	7 (2013)	-	-

Suicide and Self-Harm

The rate of suicide and self-harm in County Carlow is among the highest in the country and the number of youth suicides over recent years has reached worrying levels

Table 2.12: Suicide by Area of Residence 2014*

Order	Area of Residence	Rate (per 100,000)
1	Limerick City	17.8
2	Cork City	17.3
3	Carlow	15.7
4	Leitrim	15.5

* National Suicide Research Foundation

⁷ Percent of all children or relevant population in Carlow

⁸ State of the Nation's Children (SONC, 2012)

⁹ National Suicide Research Foundation

¹⁰ This represents an 8.1% reduction (in referrals) on 2014. Source: Tusla: Carlow/Kilkenny/South Tipperary Data Analysis for 2015

¹¹ Source: HSE- HPSC Report 2013

¹² Source: HSE- HPSC Report 2013

¹³ State of the Nation's Children (SONC)

¹⁴ National Psychiatric In-patient reporting system (2013)

Table 2.13: Rate by HSE Local Health Office (LHO) ***

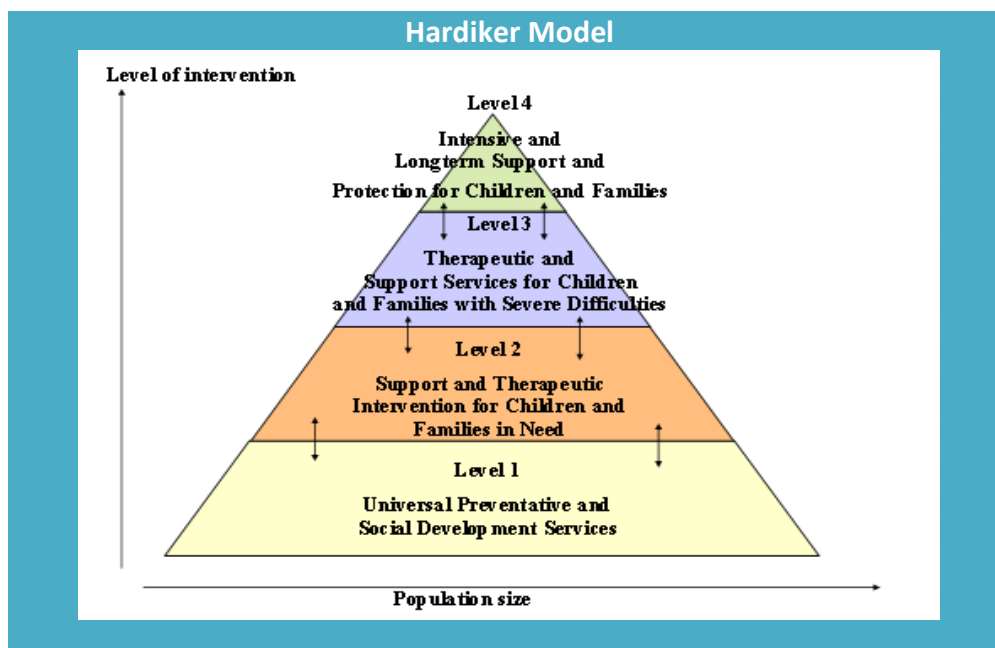
HSE Region and LHO		Men				Women			
		Population*	Self-harm			Population*	Self-harm		
			Persons	Rate**	Rank		Persons	Rate**	Rank
South	Carlow/Kilkenny	65251	110	175	12	65064	147	234	6
	Cork North	44889	68	160	17	44642	58	139	28
	Cork North Lee	90708	234	259	1	91904	232	264	3
	Cork South Lee	93436	166	168	13	97733	180	184	18
	Cork West	28437	38	145	23	28093	33	126	32
	Kerry	72629	166	243	2	72873	141	209	11

* Population derived from National Census 2011

**Person-based European age-standardised rate per 100,000 population

*** National Self-harm Registry Ireland Annual Report 2014

Section 3: Overview of Services to Children and Families in County Carlow



OUTCOME 1: Children will be active and healthy, physical and mental wellbeing

Service Area	Service Response in Co. Carlow	Statutory (S) or Voluntary (V)	Universal or Hardiker level	
Health services (including maternal and infant health); public health (including school health); health promotion; dental, ophthalmic and other services	• Public Health Nurses working from each Health Centre	S	Universal and Targeted 1,2,3	
	• 12 Health Centres	S	Universal and Targeted 1,2	
	• 6 Primary Care Teams	S	Universal and Targeted 1,2,3	
	• 33 GMS contracting General Practitioners	S	Universal and Targeted 1,2,3,4	
	• Caredoc Out-of-hours GP service	S	Universal and Targeted 1,2,3,4	
	• HSE Community Health and Social Care Services	S	Universal and Targeted 1,2,3,4	
	• Traveller Primary Healthcare Team	S	Universal and Targeted 2,3	
	• Occupational Therapy • Dietitian • Psychology	} Primary Care Teams	S	Targeted 2,3,4
	Resource Officer for Suicide Prevention	S	Universal 1,2	
	Cuidiu Breastfeeding support group	V	Universal	
• St. Luke's, Kilkenny provides general and emergency hospital services Carlow	S	Universal and Targeted 1,2,3,4		

	population		
Hospital services	• Waterford Regional Hospital provides orthopaedic services	S	Targeted 2,3,4
	• Holy Angels Day Care Centre for Pre-school children with special needs		
Community-based therapy services, services for children and young people with disabilities, youth mental health services	• Children's Services Centre, Bethany House	S	Targeted 2,3,4
	• HSE Child Psychology Primary Care Service	S	Targeted 2,3,4
	• HSE Child and Adolescent Mental Health Service	S	Targeted 2,3,4
	• Self Harm Intervention Programme	S	Targeted 2,3,4
	• Folláine Counselling Service	V	Targeted 2
Addiction Services	• Nurse, Counsellor, Psychiatrist – Carlow, Tullow, Bagenalstown, Borris	S	Targeted 2,3,4
	• Home visits – by arrangements	S	Targeted 2,3
	• Residential Treatment Centre (over 18s)	V	Targeted 2,3,4
	• Carlow/Kilkenny Development Worker	S	Universal and Targeted 1,2
	• 1 Family Support Group	V	Universal and Targeted 1, 2,3
	• Ardú Substance Misuse Team – Carlow and Tullow	S	Targeted 2,3,4

OUTCOME 2: Children will be achieving their full potential in all areas of learning and development

Service Area	Service Response in Co. Carlow	Statutory (S) or Voluntary (V)	Universal or Hardiker level
Education services	42 primary schools - 7 DEIS	S	Universal 1
	11 Post primary - 2 DEIS		Universal 1
	2 special schools		Targeted 2,3
	1 Post –leaving Cert Institute		Universal 1
	2 third level colleges		Universal 1
Early Years services	23 Parent and Toddler groups	V	Universal 1
	47 Preschool Services		Universal 1
	4 Community After School Services		Targeted 1,2
	3 Notified (to HSE) Childminders		Universal 1
	17 Voluntary Notified (to Carlow CCC)Childminders		Universal 1
	County Childcare Committee		Universal and Targeted 1,2,3
Targeted educational services that support young people within universal provision –	2 School Completion Programmes based in Carlow town and Tullow	S	Targeted 2
	3 Home School Liaison Officers (in DEIS schools)	S	Targeted 2

NEWB, NEPS, School Completion, HSCL	2.5 NEPS psychologists for County Carlow	S	Targeted 2,3
	1 Educational Welfare Officer	S	Universal and Targeted 2
	Afterschools Services	V	Universal and Targeted 1,2
Other specialist services for children and young people with additional needs	Holy Angels Day Care Centre for Pre-school children with special needs	S	Targeted 2,3,4
	9 ASD units – 6 primary + 3 post primary	S	Targeted 2,3,4
	4 Supported Training workshops (adult)	V	Targeted 2,3,4
Other education and Training	Youthreach	S	Targeted 2
	Carlow Youth Training Centre	S	Targeted 2
	Moving-on: Young Mothers Back to Education Programme	V	Targeted 2,3
	Community and Parental education	V	Universal and Targeted 1,2
	National Learning Network	V	Universal 1

OUTCOME 3: Children will be safe and protected from harm

Service Area	Service Response in Co. Carlow	Statutory (S) or Voluntary (V)	Universal or Hardiker level
Family Support Services	2 Family Resource Centres	S	Universal and Targeted 1,2,3
	HSE Family Support Service	S	Universal and Targeted 1,2,3
	Barnardos Family Support Service	V	Targeted 2,3,4
	Lifestart Parent Support	S	Universal and Targeted 1,2
Child Welfare and Protection services	HSE Child Protection services	S	Targeted 2,3,4
	Tusla Child and Family Networks	S and V	Targeted 2,3
	HSE Foster Care and Adoption Services	S	Universal and Targeted 1,2
	Carlow Women's Aid Domestic Violence support and information service	V	Universal and Targeted 1,2,3
	Carlow and South Leinster Rape Crisis Centre	V	Universal and Targeted 1,2,3
Youth Justice Services	9 Garda stations	S	Universal and Targeted 1,2
	1 Garda Juvenile Liaison Officer	S	Targeted 2,3
	1 Garda Diversion Programme	S and V	Targeted 1, 2,3
	1 Probation Officer (shared with Kilkenny)	S	Targeted 2,3

OUTCOME 4: Children have economic security and opportunity

Service Area	Service Response in Co. Carlow	Statutory (S) or Voluntary (V)	Universal or Hardiker level
Family Income Support Services - Department of Social Protection	3 Social Welfare Offices	S	Universal 1
	1 Money Advice and Budgeting Service		
	5 Offices administering Supplementary Welfare Allowance		
Child Benefit	14 Post Offices	S	Universal 1

Pre-employment courses	Want to Work	V	Universal and Targeted 1,2
	Tosú – pre-training 17-24 years	V	Targeted 2
	Tús Community Work Placement	V	Universal

OUTCOME 5: Children will be connected, respected and contributing to their world			
Service Area	Service Response in Co. Carlow	Statutory (S) or Voluntary (V)	Universal or Hardiker level
Youth Services - Carlow Regional Youth Services	2 Youth Cafes	V	Universal 1
	4 Youth Projects in community	V	Universal and Targeted 1,2,3
	1 Garda Youth Diversion Programme	V	Targeted 1,2,3
	Youth at Risk Project	V	Targeted 2,3
	Folláine Youth Counselling Service	V	Universal and Targeted 1,2,3
Family and Community Services	Teen Parent Support Programme	V	Targeted 2
	Carlow Rohingya Education and Work Experience Programme	V	Targeted 2,3
	10 services offering Rainbows Support	S and V	Universal and Targeted 1,2
	SE Regional Family Support Network (Addictions)	V	Universal and Targeted 1,2
Other family and community Services promoting equality, Integration and pro-social activities and behaviours with and for children and young people	Carlow Integration Forum	S and V	Universal
	Traveller Community Development Programme	S and V	Universal
	Carlow Young Travellers Project	V	Targeted
	Rohingyan Education and Work Experience Programme	V	Universal
Arts, sports, play, recreation and heritage, services, facilities and activities	Arts Office supports 3 youth theatres, 1 youth choir, 1 youth orchestra, Music Generation programmes	S and V	Universal
	Sports Partnership	S	Universal & Targeted
	37 indoor sports facilities	V	Universal
	3 Girl Guide units	V	Universal
	6 scout troops	V	Universal
	4 libraries	S	Universal
Active Citizenship	Comhairle na nÓg	S and V	Universal
	Young Social innovators	S and V	Universal
Social Inclusion measures	Ring-a-Link rural bus	S	Universal
	Local Community Development Committee (LCDC)	S	Universal
Housing	County Council Housing Dept. - Housing Officer, SEO, Tenancy Liaison Officer, Tenancy Sustainment Officer	S	Universal and Targeted 1,2
	County Council Social Worker for Travellers and Homeless	S	Universal and Targeted 1,2
Information	2 Citizen Information Centres	S	Universal and Targeted 1,2
	Money Advice & Budgeting Service (MABS)	S	Universal and Targeted 1,2

Section 4: Local Needs Analysis in County Carlow

The needs of children and young people in County Carlow were examined for this Plan in 2 ways:

1. TSA consultants were contracted to carry out a range of consultations with children and young people, professionals working in the area and parents and a mapping of key services in the county
2. The key data, compiled from the local socio-demographic profile, the service map and a review of the relevant literature.

The needs were categorised under the 5 National Outcomes

1. Active and Healthy, Physical and Mental Wellbeing

1.1 Mental Health

Youth Mental Health concerns have been highlighted in the county in a number of ways.

- **Suicide and self harm**

There have been a high number of suicides among young people in the county under the age of 18 in the past 5 years and the National Office of Suicide Prevention figures show that the County Carlow has had the 2nd highest rate in Ireland for suicide in 2013 and highest rate for female suicide in 2013 and 2014. The CYPSC Critical Incident and Major Emergency Plan was drawn up in 2013 and has been triggered to co-ordinate a response to youth suicides. This is now being reviewed to make it more effective and will be adapted and included in the Connecting for Life - Carlow County Suicide Prevention Plan.

Schools have expressed concern about the level of self-harm among children and many primary schools have seen a growth in this trend. A real concern is that the Self Harm Intervention Programme (SHIP) is confined to people over the age of 16.

- **Mental Health Services**

In all the consultations the issue of mental wellbeing of children and young people and a rise in the numbers reporting anxiety, depression and other emotional difficulties has been highlighted in the county. A gap has been identified around the provision of support for those who do not reach the threshold for the HSE Psychology and CAMHS services but who do need support and some intervention.

The provision of universal and targeted anti-bullying/cyber-bullying, resilience and emotional support programmes is patchy and piecemeal. A number of agencies are beginning to provide programmes but resources are not available to roll these out around the county and those in rural areas do not have the same level of access as their peers in urban areas.

The NEPS is very over-stretched in the County, with 2 of its psychologists out on leave and not replaced. NEPS service also reports that while it has traditionally looked after learning difficulties most of its work is now in the area of emotional and behavioural issues.

The statutory mental health services for those under the age of 18 have been identified by all groups consulted as falling short in providing adequate services to those needing support and treatment. There is a significant waiting list for Primary Care Psychology and there is often a perceived lack of clarity about which is the appropriate service for an individual child. The fact that all mental health referrals now have to come through a GP is also reported to be causing blockages in the system and there is a concern that the GP may not always have all the information needed to make an appropriate referral.

Suicide levels in Carlow are among the highest in the country and there have been a large number of youth suicides in recent years. The response to these deaths have been challenging to the

agencies providing support to young people and their families

The Folláine counselling service, run by Carlow Regional Youth Services has been overwhelmed in the last 6 months by the fallout from the youth suicides in Carlow and its waiting time has been increased from under 2 weeks to 10 weeks, leaving vulnerable young people without support for long periods.

Parents and other professionals have identified the need for more clarity on referral pathways to the mental health services. The Traveller Health Workers also highlighted the high levels of mental illness among their community

1.2 Physical Health

The issue of ensuring that children and young people are active in their lives was raised by both parents and professionals. While there are many sports facilities throughout the county, and the Sports Partnership is active in promoting physical activity through sport, a need was identified for provision of non-sporting physical activities and encouraging families to enjoy the natural environment and outdoor play. Some young people felt that participating sports was too expensive and the issue of lack of sports for girls in rural areas was identified.

The need for good nutrition and information for parents was highlighted. While there are numerous programmes provided through schools for both children and parents, the need for simple, accessible information on nutrition and healthy eating for families was highlighted.

1.3 Substance Misuse

The issue of substance misuse was not one that was identified by parents, young people and children consulted. However, those working in the area of substance misuse referred particularly to the issue of the vulnerability of children growing up in households where there is misuse of drugs and alcohol. These children are often cast into adult roles and exposed to criminal activity and have very particular support needs. The South East Regional Drugs Task Force and the local Substance Misuse services have included this cohort of children in their plans and have identified CCYPSC as a key partner in addressing these needs.

The CCYPSC will also engage in disseminating information of substance misuse among young people in the county

2. Achieving full potential in all areas of learning and development

2.1 Engagement in education

The Tusla School Attendance Data from Primary and Post-Primary Schools 2013/2014 shows Carlow schools are generally in line with the average for the Leinster in terms of lost days, suspension and expulsions. However, from consultations with professionals there is a concern that certain groups of children and young people are not doing well. It is important that we find out who these groups are, what are the barriers and difficulties faced by the families and how they can be addressed.

Additionally the problems of accessing third level education has been highlighted and the need to engage with schools in the county to ensure that the HEAR and DARE programmes are promoted and supported.

There is a need for an increase in the availability of opportunities for vocational training and apprenticeships to provide alternatives to a very academic third-level education in the County. The Kilkenny and Carlow Education and Training Board will be instrumental in developing the vocational sector over the coming years and CYPSC will engage with it around assessing the need and broadening the provision.

2.2 Early School Leaving

The percentage of the intake of children who entered second-level education in County Carlow in 2007 who sat the Leaving Certificate was 84.9%, which is below the national average of 90.1%, the lowest rate in the country. The impacts on young people of early school leaving are well documented leaving young people at a disadvantage to their peers in the area of economic opportunity, vulnerability to substance misuse and criminal behaviour. There are 2 School Completion programmes operating in the county, one in the DEIS schools in Carlow town and Bagenalstown and the other in Tullow and the surrounding areas. The KCETB Youthreach programme provides a limited number of places for those who have left school early but has identified the need for further provision, as the demand for places exceeds what is provided. The needs of those attending Youthreach often require high levels of support and further resources are needed. Carlow Youth Training, a community training centre also provides supported training and development in a range of areas.

2.3 Transitions

Transitioning from one level of the education system to the next has been identified as causing problems for many children and young people and is also linked to the issue of early school leaving. Again a number of pre-schools and schools are operating transitions programmes but in a piecemeal way.

The addition of the 3rd level sector has also highlighted the issue of high drop-out level of students in 1st year – the Higher Education Authority (HEA) reported that 16% of all first-year students quit their college courses in 2014. 32.7% of community or comprehensive schools lost hours during the 2015/16 school year, 29.6% of voluntary secondary schools, 27% of ETB schools and 6.6% of colleges of further education and this has had an impact of how students choose their 3rd level course. The CYPSC 3rd level representatives are now providing a formal link with the 2 colleges where this issue can be raised and explored.

3. Safe and Protected from Harm

3.1 Family Support

The area of Family Support is very topical in the county, the Tusla Prevention, Partnership and Family Support Initiative is currently being rolled out and CYPSC provides support, especially with disseminating information on Meitheal and training to member organisations. The 2 Family Resource Centres and the Community Services Centre have tailored services to the needs for family support. Bagenalstown FRC has hosted a Strengthening Families Programme and will monitor the need for further programmes. A need has been highlighted for training for FRC staff to provide Family Support work, as many were taken on in roles where this training was not a requirement.

Children and young people living in families where there is domestic and sexual abuse have been identified as a group for whom there is limited support. Carlow Women's Aid Domestic Violence

Service experienced a cut in its funding in 2013, resulting in the withdrawal of the Family Therapy service, which had worked with a small number of children. The Carlow and South Leinster Rape Crisis Centre offers a relationships programme in some schools and works with young people under-18, with parental permission

3.2 Child Safety

- The issue of how vulnerable children and young people are to abuse and bullying online and on social media came up in all of the consultations. Some schools have had programmes provided to help children and young people to keep themselves safe online and to support parents to protect their children but this has not been consistent and is not coordinated. The CYPSC subgroup will gather what programmes are currently being delivered in schools and develop a strategy to collate information and programmes. It will disseminate information from the Office of Internet Safety and promote Internet Safety day.
- Much valuable work done on Child Safety by the HSE and the Health and Safety Authority, including material on safety in the home, on the farm and in the water is available online. The CYPSC provides a good platform to distribute this information widely to parents and carers.

4. Economic Security and Opportunity

In Ireland, the youth unemployment rate peaked at around 31% in the second quarter of 2012 but it has since declined to 26% in the first quarter of 2014. In May 2016, the actual number of people under 25 on the Live Register in the county was as follows:

	Male 2016 (2015)	Female 2016 (2015)
County Carlow	436 (537)	345 (377)
Bagenalstown	86 (108)	76 (93)
Carlow	280 (335)	188 (213)
Tullow	70 (94)	81 (71)

(Source: CSO)

This shows that, in line with national trends, unemployment has fallen in the County. However, particular groups of young people are not in a position to take up the opportunities to take up employment and the need for pre-development and pre-employment work has been highlighted by many agencies as a priority.

The need for access to non-academic education and training has also been identified by those working in the education sector and by young people themselves. Under both Outcome 2 and Outcome 4 the CCYPSC will work with the Kilkenny and Carlow ETB

5. Connected, Respected and Contributing to their world

Consultation with Children and Young People

Over the past couple of years the CYPSC has conducted extensive consultation with children and young people, with the help of Comhairle na nÓg, County Childcare Committee, primary schools (including a special school), post-primary schools, Youthreach and 3rd level college. Tusla has also conducted in-depth consultation with children and young people in their care in the county. We have found that, in the main, children and young people are happy in their lives. Some issues identified by them have been highlighted under the various outcomes above and include: worries about mental health and lack of supports, bullying/cyberbullying, lack of career guidance/options and supports and the cost of out-of-school activities.

The challenge for CYPSC is to develop mechanisms which give a real voice to children and young people. Currently Comhairle members present their work at an average of 2 CYPSC meetings and at County Council meetings. The CYPSC Co-ordinator and a number of CYPSC members sit on the Comhairle na nÓg Steering Committee and there is a good mechanism for the transfer of information. However it is acknowledged that more work needs to be done to ensure that the voice of children and young people are being actively represented in the work of all agencies whose work impacts on their lives.

It is acknowledged that Comhairle represents a particular group of young people, who are quite vocal and engaged but other groups must be identified and worked with to ensure that they are also heard. The National Strategy on Children and Young People's Participation in Decision-making 2015-2020 aims to ensure that children and young people are heard in relation to all aspects of their lives including health, education and safety and provides guidelines which are used by the CYPSC to enhance consultation and participation of a broad range of young people in the county.

Rural Transport and Isolation

Comhairle na nÓg has highlighted the lack of rural transport as a major issue for young people, leading to isolation and young people not being able to participate in many activities which are town based. This issue was also highlighted by the Education Welfare Service who considered lack of transport, along with lack of rural broadband access, a major problem for rural children not attending school.

Rural Transport is also an issue being addressed under the Local Economic and Community Plan (LECP) and the Comhairle Steering Committee will ensure that Comhairle members will be consulted on this particular aspect of the Local Economic and Community Plan (LECP), as well as presenting its findings to the County Council and the Children and Young People's Committee.

Parenting

The issue of parenting was identified by the Children and Young People's Services Committee as one that cut across all of the National Outcomes. In all consultations it is acknowledged that an effective way of addressing issues being experienced by children and young people is to provide the necessary support to parents. In its 'Investing in Children' Tusla describes parenting support as 'having a particular role in the wider context of supporting families'.

County Carlow Children and Young People's Committee has used the Parenting subgroup structure over the past number of years to good effect to gather together the agencies providing parenting

programmes and parenting support in the county. It produces a quarterly update on parent supports and calendar of parenting programmes with the aim of minimising duplication and of having programmes spread throughout the year to improve availability.

Section 5: Summary of Children and Young People’s Plan for County Carlow

The following table outlines the priority areas identified in the needs analysis conducted in County Carlow to inform this plan. It is set out under the 5 National Outcomes

Outcome Areas	Priority Areas	Objectives
1. Active and healthy, physical and mental wellbeing	Youth Mental Health	<ul style="list-style-type: none"> • Advocate for improved mental health services • Information on services and how to access them • Promote emotional wellbeing and resilience • Update the Critical Incident Response Protocol
	Promotion of Healthy Lifestyles	<ul style="list-style-type: none"> • A directory of activities for children and families
	Substance Misuse	<ul style="list-style-type: none"> • Support children living in households where there is substance misuse • Disseminate information on services for those wishing to address substance misuse issues
2. Achieving full potential in learning and development	Engagement of children and young people in the education system	<ul style="list-style-type: none"> • Identify target groups who have particular difficulties engaging in the education system • Develop and pilot transition programmes for all levels of education • Improve access to third-level education • Improve the range of options for vocational training
3. Safe and protected from harm	Early Support and Intervention	Support rollout of Tusla Prevention, Partnership and Family Support
	Online and Social Media Safety	Develop an Online Safety Strategy

Outcome Areas	Priority Areas	Objectives
	Information on Child Safety	Promote safety in all aspects of children's lives
	Domestic and Sexual Abuse	Support children experiencing domestic and sexual abuse
	Family Support	Adequate Family Support for children and families in the county
4. Economic security and opportunity	Youth unemployment	<ul style="list-style-type: none"> • Advocate for the need for appropriate pre-development training with young people • Provide young people with skills and competencies to take up employment opportunities • Promote awareness of opportunities for apprenticeships • Support opportunities for young entrepreneurs
5. Connected, respected and contributing to their world	Youth Participation	<ul style="list-style-type: none"> • Children and young people more involved in decisions that affect their lives • Children and young people are have opportunities to help shape the communities in which they live
	Parenting (across all 5 National Outcomes)	<ul style="list-style-type: none"> • Calendar of parenting programmes and supports • Increased access to targeted parenting supports • Promote a Parent Support Approach (de-stigmatise parenting supports) • Promote parental participation at all levels of service delivery

Change Management	
Local Priority Areas	Objectives
Information	To use the voice of the CYPSC at national level to highlight issues arising at local level and to lobby for changes to improve service provision in the County
Data Collection and Dissemination	To build and strengthen County Carlow CYPSC as the forum for interagency work and communication for agencies providing services for children and their families
Advocacy and lobbying at national level	To use the voice of the CYPSC at national level to highlight issues arising at local level and to lobby for changes to improve service provision in the County
Ongoing development of County Carlow CYPSC	To build and strengthen County Carlow CYPSC as the forum for interagency work and communication for agencies providing services for children and their families

Section 6: Action Plan for County Carlow Children and Young People's Services Committee

Action Plan for County Carlow Children and Young People's Services Committee							
National Outcome 1: Healthy, both physically and mentally							
Priority Area	Objective(s)	Indicators	Target	Activities	Timeframe	Lead	Link to other plans
Youth Mental Health	To provide information for children and families on services to support and address mental health issues	User-friendly information on the services and how to access them	A Pathways poster available in 80% GP surgeries throughout the county and on CCYPSC website	Adapt existing CYPSC templates for to provide information on referral pathways to mental health services for County Carlow	Q4 2017	CYPSC - subgroup	HSE Carlow Regional Youth Services
	To promote emotional wellbeing and resilience in children & young people	Information & programmes for promotion of resilience & wellbeing	Hints & tips on building resilience on the website 20 Afterschool workers trained in Friends for Life Providers of parenting programmes have information booklets to inform parents on resilience programmes	<ul style="list-style-type: none"> Disseminate key messages on how to be resilient Support the setting up of resilience programmes for children & young people in schools and other settings Input information to parenting programmes & supports 	ongoing	CYPSC - subgroup - NEPS	Sports Partnership- Carlow Regional Youth Services Barnardos
	A co-ordinated response to suicide deaths among young people	An up-to-date Protocol document	Critical Incident Protocol updated and disseminated to 100% family support services in the county	Review and update the CCCYPSC Critical Incident Protocol, in line with the Connecting for Life Suicide Prevention Plan for County Carlow	Q3 2017	CYPSC/Suicide Prevention Resource Officer	HSE Carlow Regional Youth Services NEPS Tusla

Action Plan for County Carlow Children and Young People's Services Committee							
National Outcome 1: Healthy, both physically and mentally							
Priority Area	Objective(s)	Indicators	Target	Activities	Timeframe	Lead	Link to other plans
Advocacy for improved mental health services	To improve mental health services for children and young people in Carlow	Improvement on waiting times for children and young people for mental health services	A report on gaps in mental health services compiled and made to National Steering Group	Identify gaps in services using Hardiker model and report to the National Steering Group & Co-ordinator– using the audit of services and other methodologies	Q2 2017	CYPSC - subgroup	HSE Tusla
Promotion of Healthy & Active Families	Provide information and create awareness for families to be healthy and active	Directory of all recreational, sports, cultural and family activities online & in print	<ul style="list-style-type: none"> • Publication of guide to all recreational, sports, cultural and family activities • Health promotion literature promoted website 	<ul style="list-style-type: none"> • Collaborate with relevant agencies to develop a comprehensive guide to all recreational, sports, cultural and family activities • Use interagency links to improve the dissemination of information on healthy eating/nutrition 	2017	CYPSC - subgroup	National Plan for Physical Activity Sports Partnership Child & Family Networks
Tackling Substance Misuse	To support children & young people who live in families where there is substance misuse	Children & young people who live in families where there is substance misuse	<p>Substance misuse services promoted on website</p> <p>Substance Misuse worker on the Healthy & Active subgroup</p>	Liaise with and support HSE substance misuse service in the implementation of the relevant parts of its plan	2017	CYPSC	ARDÚ South East Regional Drugs Task Force
	To provide information on services available to those wishing to address their substance misuse	Broader awareness of services available to address substance misuse	Information on the services disseminated through CYPSC member organisations	Use interagency links to build on the dissemination of information on services available	2017 ongoing	CYPSC	SERDTF

Action Plan for County Carlow Children and Young People's Services Committee							
National Outcome 2: Education & Training							
Priority Area	Objective(s)	Indicators	Target	Activities	Timeframe	Lead	Link to other plans
Engagement of children & young people in the education system	Identify specific target groups and supports required to engage children in education	Improved school attendance numbers	<ul style="list-style-type: none"> Statistics from local and national reports collated Data analysed to inform actions 	<ul style="list-style-type: none"> Gather statistics on specific groups who are not completing education Engage with agencies and professional to identify the supports needed and lobby to have them put in place 	2017/2018	CYPSC education subgroup	Tusla/NEWB
	To have effective supportive transition programmes between all levels of education	Transition programme piloted Shared good practice	Information gathered on transition programmes in operation in the county and in other CYPSC areas Transition Programme piloted	<ul style="list-style-type: none"> Explore transition programmes currently operating Pilot a programme at Early Years, Primary, Secondary and Third level in Carlow 	Q3 2017	CYPSC education subgroup CCC School Principals	Schools Colleges KCETB

Action Plan for County Carlow Children and Young People's Services Committee							
National Outcome 2: Education & Training							
Priority Area	Objective(s)	Indicators	Target	Activities	Timeframe	Lead	Link to other plans
Engagement of children & young people in the education system	Improve access to third-level education for those experiencing barriers, especially those who qualify for Higher Education Access Route (HEAR) and Disability Access Route (DARE) programmes	10% Increase in numbers accessing the two 3 rd level colleges on access programmes	Local colleges & ETB/PLC using website and CYPSC network provide information on HEAR and DARE access programmes	Engage with colleges & ETB/PLC around access and retention policies and promote measures to support young people attending under the HEAR & DARE programmes	Begin in 2017	CYPSC education subgroup College authorities School Principals	CWIT Carlow College
	To improve the range of options and access to vocational training for young people	Vocational training available in 2 schools in the county and one senior college	Information gathered on relevant programmes Links to other relevant sites, e.g. Solas, etc. on CYPSC website	<ul style="list-style-type: none"> Engage with relevant agencies to identify what programmes are available and identify gaps Link into career guidance network to promote broad vocational options 	Begin in 2017	CYPSC education Subgroup	KCETB DSP

Action Plan for County Carlow Children and Young People's Services Committee							
National Outcome 3: Safe & Protected from harm							
Priority Area	Objective(s)	Indicators	Target	Activities	Timeframe	Lead	Link to other plans
Information on Child Safety	Promote child safety in all areas of children's lives	HSE Safety tips published on Facebook by 1. County Childcare Committee 2. 11 post primary schools 100% of Parent & Toddler groups, 100% parenting programme, 100%	Annual email and internet campaign to promote HSE Safety Tips HSE Safety Tips on CYPSC website	Explore ways of using CYPSC interagency links to improve the dissemination of HSE Child Safety and other materials online and in print Host events to highlight safety for children and young people periodically, based on locally identified need	2017 ongoing	CYPSC Child Welfare & Protection subgroup + Parenting subgroup	HSE Health Safety Authority (HSA) National Poisons Information Centre
Domestic & Sexual Violence and Children	To support children in County Carlow who experience or witness domestic violence	Concrete data on incidence of domestic violence Support programmes for children experiencing domestic violence available Interagency training workshops on domestic violence	A report on the incidence of Domestic Violence in the county 2 x TLC Kidz programmes provided 3 workshops for frontline workers to be trained to identify signs of domestic violence	<ul style="list-style-type: none"> Explore the specific needs of children in DV Collect relevant data on children affected by domestic violence from relevant agencies Explore programmes and initiatives currently available and identify and support possible programmes Domestic Violence training for agencies to appreciate/understand the impact & extent of Domestic Violence on children and young people 	2017/2018	CYPSC Child Welfare & Protection subgroup	Carlow Women's Aid Tusla

				<ul style="list-style-type: none"> Awareness-raising and guidance on domestic for frontline workers working with children & young people 			
	To support children and young people in County Carlow who experience child abuse	A response developed to support children & young people	Rape Crisis Centre and other support services	Engage with relevant agencies to consider the needs of children and young people in the area of sexual abuse and violence in the county	2017	CYPSC Child Welfare & Protection subgroup	Carlow & SL Rape Crisis Centre Tusla
		A response developed to support children & young people	Interagency workshop to assess needs of children vulnerable to sexual abuse	Engage with relevant agencies around the vulnerability of children and young people to sexual abuse	2017	CYPSC Child Welfare & Protection subgroup	HSE Disability Services Tusla
Family Support	That children & families have access to a range of appropriate timely family support	<p>Information on the needs of children and young people</p> <p>Engagement of children and young people with Meitheal</p>	<p>Working group of identified agencies set up</p> <p>100% of children and families will be offered support appropriate to their needs</p> <p>Family Support Directory published on line and in hard copy</p>	<ul style="list-style-type: none"> Establish a working group of stakeholders to identify the current gaps in family support, identify resources needed to meet the needs CYPSC to meet with Tusla/DCYA and advocate for necessary resources A directory of Family Support services 	2017/2018	CYPSC Child Welfare & Protection subgroup	Tusla DCYA

Action Plan for County Carlow Children and Young People's Services Committee							
National Outcome 4: Economic Security & Opportunity (ES&O)							
Priority Area	Objective(s)	Indicators	Target	Activities	Time frame	Lead	Link to other plans
Youth Unemployment	Advocate for the need for appropriate pre-development training with young people Provide young people with skills and competencies to take up employment opportunities	30% increase in young people engaging in pre-employment training Progression routes established	An information leaflet launched cataloguing the pre-development and pre-employment programmes available	Coordinate current provision of pre-development and pre-employment programmes, identify the gaps and barriers in this area of work	2017	CYPSC ES&O subgroup	DSP KCETB St. Catherine's CRYC Carlow Youth Training
	Promote awareness of developments in the provision of apprenticeships for young people	Leaflet available in 11 post-primary schools in county	An information leaflet launched on apprenticeships programmes available	Monitor and support developments in providing a comprehensive apprenticeship system and actively publicise and promote ongoing work	2018	CYPSC ES&O subgroup	DSP KCETB CCDP
	Provide appropriate support for young people to be self-employed	Young people receiving information on entrepreneurship	Working group of schools, IT, LEO and CCDP brought together	Engage with LEO & CCDP + Schools + IT to identify appropriate programmes for u-25 year olds, and the gaps and barriers to young people becoming entrepreneurs Gather current statistics on young entrepreneurs	2017 ongoing	CYPSC ES&O subgroup	Local Enterprise Office

Action Plan for County Carlow Children and Young People's Services Committee							
National Outcome 5: Connected, Respected and Contributing							
Priority Area	Objective(s)	Indicators	Target	Activities	Timeframe	Lead	Link to other plans
Youth Participation	Children & young people are consulted on decisions and planning which affects their lives	CYPSC consultation with 100% schools, Youthreach and Carlow Youth training Comhairle na nÓg Plan More formal routes for children and young people to be consulted about decisions which affect them	Guidance document for agencies on consultation with young people – DCYA strategy disseminated CYPSC representative on Comhairle steering group	<ul style="list-style-type: none"> All member agencies of CYPSC to ensure that they have a method of consulting children & young people when developing their plans and strategies Continue to strengthen links with Comhairle na nÓg to ensure they are heard at the CYPSC 	ongoing	CYPSC	All CYPSC members
	Children & young people are have opportunities to help shape the communities in which they live	50% increase in numbers of young people involved in community activities and taking leadership roles	Links developed with the volunteer centre	<ul style="list-style-type: none"> Measure the current levels of volunteerism among young people in all facets of the community Explore ways of increasing the numbers of young people volunteering in the community 	Q2&3 2017 2017-2018	CYPSC	Carlow Regional Youth Services Schools Volunteer Centre

Parenting (across 5 National Outcomes)	Co-ordination of information re parenting programmes/supports throughout county Carlow	Accessible information available for parents and relevant agencies regarding support available for parents/carers across age groups, needs and geographical spread	Calendar updated quarterly and distributed to 30% more agencies Up-to-date calendar on CYPSC website	Provision and dissemination of current calendar of parenting programmes, courses and supports updated bi annually To include link to Calendar on CCCYPSC website	ongoing	CCCYPSC (Parenting Sub Group)	Investing in Families: National Parenting Support Strategy
Parenting (across 5 National Outcomes)	Co-ordination of delivery/provision of parenting supports throughout county Carlow	<ul style="list-style-type: none"> Increased collaboration between relevant agencies in order to achieve a more coherent and integrated delivery of parenting programmes and supports across the county 30% increase access to /take up by parents in general informal to range of informal and formal supports across the lifespan 	<p>Database of parenting programmes and of trained facilitators</p> <p>Communication structure developed and disseminated</p>	<p>Develop a local database of trained facilitators in various parenting programmes</p> <p>Develop clear communication process with agencies with regard to delivery of parenting support</p>	2017/2018/2019	CYPSC Parenting Sub Group	<p>Tusla</p> <p>FRC</p> <p>HSE</p> <p>Blueprint for CYPSC's</p>
	Increased access to targeted supports parenting support across County Carlow	<ul style="list-style-type: none"> Increased availability & take up targeted and special interest parenting supports across life span and levels of need Parents to have 	<ul style="list-style-type: none"> Targeted Parenting programmes available 20% more facilitators trained to 	<ul style="list-style-type: none"> Prioritise targeted programmes across age groups within current resources Increase capacity for provision / delivery targeted parenting 	ongoing	CYPSC Parenting + Child Welfare & Protection subgroups	Tusla

		timely access to individual Parenting support	deliver targeted parenting programmes	supports such as: 'Parenting when Separated' <ul style="list-style-type: none"> Increase capacity to address waiting time for individual interventions 			FRCs
Parenting (across 5 National Outcomes)	A Parent Support Approach in order to increase access to Preventative Support to all parents at universal level (destigmatising parent support)	Universal access for 100% of first time parents in County Carlow to a home-visiting parenting programme	Develop a proposal for First-time Parent Support Programme that is accessible to all first time parents	To explore possibility of providing a home visiting programme to reach more first time parents	2018	CYPSC & Tusla Parenting/PPFS	Tusla / CCC / HSE
		Appropriate signposting /referrals to relevant services	<ul style="list-style-type: none"> Publication on website of key parenting messages Information leaflets available through 100% parent/toddler support services 	<ul style="list-style-type: none"> Disseminate Tusla 50 Key Parenting messages Signpost sources of information to appropriate agencies e.g. PHNs, Child care providers, GPs schools Parenting programmes – ensure at least 3 per year for throughout the County 	2017 ongoing		Tusla
Parental Participation	Increase, promote and monitor parental participation at all levels of service delivery	Parents experience services as engaging and participatory (strategy)	Parenting Participation Tools including Parental Satisfaction Measure	Dissemination of Parenting Participation Tools including Parental Satisfaction Measure Include parent	2018	CCCYPSC Parenting Sub Group	CCCC Tusla-Parental Participation Strategy

		Parents contribute to the work of CYPSC through subgroup	publicised on website Develop a way of having Parent voice represented on Parenting subgroup	representation on Parenting sub group			
--	--	--	---	---------------------------------------	--	--	--

Action Plan for County Carlow Children and Young People’s Services Committee							
CHANGE MANAGEMENT							
Priority Area	Objective(s)	Indicators	Target	Activities	Timeframe	Lead	Link to other plans
Information	To provide information on services and facilities to children & families in the County	User-friendly information available	<ul style="list-style-type: none"> • Carlow CYPSC website fully functioning • Directory of all recreational, sports, cultural and family activities available on website • a guide to referral to youth mental health 	<ul style="list-style-type: none"> • Set up Carlow CYPSC website • Link CYPSC website to other websites in County • Publish a Directory of all recreational, sports, cultural and family activities • Publish a guide to referral to youth mental health services 	2017-2018	CYPSC	LCDC/LECP

Action Plan for County Carlow Children and Young People's Services Committee							
CHANGE MANAGEMENT							
Priority Area	Objective(s)	Indicators	Target	Activities	Timeframe	Lead	Link to other plans
			services on website				
	To provide information to other agencies in relation to lives of children & young people in the county	Relevant information relevant to providers of services to children and young people	Links to relevant agencies on CYPSC website and facebook	<ul style="list-style-type: none"> • Use interagency links to allow for ease of dissemination of information to all relevant agencies • Use CYPSC newsletter to share relevant information 	ongoing	CYPSC	LCDC/LECP
Data Collection and Dissemination	To ensure data necessary for the work of the CYPSC is up-to-date and disseminated to member agencies and others, as required	Links established with relevant data collection agencies	Guide of relevant data collection agencies drawn up Annual review of data to highlight trends	<ul style="list-style-type: none"> • Compile a guide to relevant data collection agencies • Highlight trends and issues emerging through use of data 	2017 ongoing	CYPSC	LCDC/LECP
Advocacy and lobbying at national level	To use the voice of the CYPSC at national level to highlight issues arising at local level and to lobby for changes to improve service provision in the County	Input from Carlow on national bodies	Regular feedback to National Steering Group and National Co-ordinator	Maintain communication with National Co-ordinator and National Steering Group to provide the information on developments locally	ongoing	CYPSC	Tusla CYPSC member agencies

Action Plan for County Carlow Children and Young People's Services Committee							
CHANGE MANAGEMENT							
Priority Area	Objective(s)	Indicators	Target	Activities	Timeframe	Lead	Link to other plans
Ongoing development of County Carlow CYPSC	To build and strengthen County Carlow CYPSC as the forum for interagency work and communication for agencies providing services for children & their families	<ul style="list-style-type: none"> • Comprehensive membership • CYPSC has a county profile • Interagency protocols 	<p>Information links established through website and media to inform agencies of CYPSC work</p> <p>Broad representation of agencies on active subgroup</p>	<ul style="list-style-type: none"> • Provide information on work of CYPSC to all relevant agencies • Use subgroup structure to promote and involve staff at 'coalface' in the work of the CYPSC 	ongoing	CYPSC	Tusla CYPSC member agencies

Section 7: Monitoring and Review

The County Carlow Children and Young People's Services Committee (CCYPSC) commits to monitoring and review of its Action Plan as follows:

CCCYPSC will review overall progress, sub-structures and planning on an ongoing basis in order to quantify the level of progress and the impact of the plans, on outcomes for children and families and harness the learning for CCCYPSC and its participating agencies.

The monitoring and evaluation will be carried out at a number of levels:

1. Review of CYPSC remit, partnership, change management and outcomes
2. Review of CYPSC sub-groups and outcomes
3. Review of projects driven by the sub-groups or agencies and outcomes
4. Bi-annual reports to the Local Community Development Committee (LCDC) on commitments included in the Local Community Economic Plan (LECP)

Specifically it will complete the following overall review:

CCCYPSC	Area and Review Process	Timeframe
CCCYPSC CCCYPSC Plan	Annual review of CCCYPSC Annual review of plan, agreeing adjustments and changes Annual Report outlining the year's work Progress reports on a quarterly basis to the National Steering Group and National Co-ordinator.	Annual December Quarterly
CCCYPSC Member Organisations / Agencies	Update on engagement with CCCYPSC, the improved outcomes for children and families from that work, change management along with activities and plans to involve children and families in its service delivery	Annually in June
Sub-Groups	Annual review of CCCYPSC sub-groups to feed into the review of CCCYPSC as outlined above. To include review of process and working of their groups along with their plans and targets.	Annually in June

APPENDIX 1

Terms of Reference

County Carlow Children and Young People's Services Committee

Terms of Reference

1. Purpose

The purpose of **County Carlow Children and Young People's Services Committee** will be to provide strategic direction and leadership to ensure effective interagency co-ordination and collaboration in order to achieve the best outcomes for all children and young people in County Carlow.

2. Term

These Terms of Reference are effective from October 2015 and continue until further notice and will be reviewed on an annual basis.

3. Membership

Name	Position/Organisation
Marie Kennedy, <i>Chairperson</i>	Area Manager, Tusla Child and Family Agency
Margaret Moore, <i>Vice Chairperson</i>	Administrative Officer, Carlow County Council
Aine Gahan	Manager, Carlow County Childcare Committee
Martina Osborne	Youthreach Co-ordinator, KK/CW Education and Training Board
Inspector Audrey Dormer	An Garda Síochána
Kathryn Wall	C.E.O., Carlow Regional Youth Services
Marian Dowd	Project Manager, Barnardos
Niall Morris	Director of Services, St. Catherine's Community Centre
Karl Duffy	SIM Manager, Carlow County Development Partnership
Leo Hogan	Principal, C.B.S, Carlow – National Association of Principals and Deputy Principals (NAPD)
Tony Crowe	Principal, Bishop Foley primary school, Carlow – Irish Primary School Principals
Josephine Tierney	Manager, Bagenalstown Family Resource Centre
Billy Kavanagh	Senior Probation Officer, Probation and Welfare Service, Department of Justice and equality
Dr. Catherine O'Sullivan	St. Patrick's, Carlow College (3 rd level)

Mairéad Maddock is Co-ordinator of the County Carlow Children and Young People's Services Committee

- Membership will be reviewed every 3 years
- New members may be nominated at any time, with the agreement of the CCCYPSC and in accordance with the guidelines of the *Blueprint for the Development of Children and Young People's Services Committees, DCYA, June 2015*
- Members representing a network of organisations may deputise a substitute rep. from another organisation in the network to attend a meeting in his/her place, where necessary
- Members representing a network of organisations will be required to ensure that the work of the CYPSC is communicated to all organisations in the network and that they also bring communications from all the network bodies to the CYPSC

4. Roles and Responsibilities

- Chairperson: Area manager, Tusla Child and Family Agency, will provide leadership and direction; will ensure effectiveness of CYSPC and in the delivery of the CYPP; ensure active participation of all members and ensure appropriate interaction between CYPSC and external stakeholders
- Vice-Chairperson: County Council representative: will support the chairperson; will chair the CYPSC in the absence of the Chairperson; ensure a balance between Tusla and other member organisations
- Members will:
 - be of sufficient seniority to represent their agency and to exercise decision-making powers
 - be expressly mandated by their parent organisation to communicate CYPSC work across their organisation
 - provide regular updates on
 - participate on working subgroups of CYPSC from time to time, as appropriate

5. Meetings

- All meetings will be chaired by the Tusla Area Manager or by the County Council representative
- A meeting quorum consist of ⅓ of the total membership of the CYPSC + 1
- Decisions will be made by consensus (i.e. members are satisfied with the decision even though it may not be their first choice). If not possible, CYPSC Chairperson makes the final decisions.
- Meeting agendas and minutes will be provided by the Co-ordinator, in consultation with the Chairperson. This includes:
 - » preparing agendas and supporting papers;
 - » preparing minutes/meeting notes and information
- There will be a minimum of 5 meetings per year and the CCCYPSC will meet in the Town Hall, Carlow or other venues, as agreed from time to time
- Duration of meetings will 2 hours and take place on a day agreed by the membership
- If required, sub-group meetings will be arranged outside of these times at a time convenient to sub-group members
- A schedule of meetings will be agreed at the beginning of each calendar year

6. Amendment, Modification or Variation

The Terms of Reference may be amended, modified or varied in writing after consultation and agreement by members of County Carlow CYPSC

APPENDIX 2

Subgroup Membership

Subgroups for Planning Children and Young People's Plan 2016-2018

Healthy and Active		Learning and Development	
Anne Coffey	CAMHS	Martina Osborne	Kilkenny Carlow ETB
Joanne Donohoe	CCDP*	Áine Gahan	Carlow CCC**
Leighann Culleton	CRYS***	Niamh Nolan	Carlow CCC
Martha Jane Duggan	Sports Partnership	Leo Hogan	Carlow CBS, Post-primary
Patricia McQuillan	Practice Nurse Co-ordinator	Allison Keneally	Carlow IT
Noel Richardson-	Carlow IT, Centre for Men's Health	Markita Mulvey	Carlow Vocational School and Inst. Further Education
Angela Keogh	CRYS Drugs Worker		
Safe and Protected		Economic Security and Opportunity	
Róisín Boyd	Tusla CP Conference Chair	Niall Morris	St. Catherine's Community Services Centre
Marian Dowd	Barnardos	Shane Clarke	CW Council Housing Dept.
Bernie Loughman	Teen Parent Support Programme	Michael Byrne	Tullow School Completion Programme
Honorina Gilchrist	Carlow Women's Aid	Anne Shortall	Bagenalstown FRC
Leighann Culleton	CRYS	Margaret Moore	CW County Council, Community Section
Insp. Audrey Dormer	Garda	Mairéad Donohoe	Kilkenny Carlow ETB
Parenting		Niall Morris	St. Catherine's Community Services Centre
Marian Dowd	Barnardos	Shane Clarke	CW Council Housing Dept.
Helen Casey	Tusla Lifestart Programme	Michael Byrne	Tullow SCP
Catherine Tully	HSCL, Askea Primary School	Joe McGhloinn-	Dept. Social Protection Community Services
Siobhán Cummins	Carlow CCC		
Bernie Loughman	TPSP		
Dylan Thomas	CCDP	*CCDP= Carlow County Development Partnership ** CCC= Carlow County Childcare Committee ***CRYS=Carlow Regional Youth Services	
Kerina Foran	PPFS Co-ordinator		

APPENDIX 3

References

Plans and Strategies Informing the Children and Young People's Plan

- Better Outcomes Brighter Futures – The National policy framework for children & young people 2014-2020: Department of Children and Youth Affairs Department of Children and Youth Affairs (2015)
- Blueprint for the Development of Children and Young People's Services Committees: Department of Children and Youth Affairs Department of Children and Youth Affairs (2014)
- A new Model for Supporting Access to Early Childhood Care and Education (ECCE) Programme for Children with a Disability: Department of Children and Youth Affairs
- Carlow County Childcare Committee Annual Plan 2016
- Carlow Sports Partnership Annual Plan
- Connecting for Life – National Strategy to Reduce Suicide 2015-2020: National Office for Suicide Prevention
- County Carlow 2021 Local Economic and Community Plan 2016-2021: Carlow County Council
- National Drugs Strategy 2009 – 2016: Department of Community, Rural and Gaeltacht Affairs
- National Strategy on Children and Young People's Participation in Decision-making 2015-2020;: Department of Children and Youth Affairs
- Pathways to Work 2015 – Intreo
- Risks and safety for children on the internet: the Ireland report; January 2011
- Rathvilly Community Needs Analysis – Final Report – Anne Eustace, Eustace Patterson Ltd., 2016
- South East Traveller Health Unit - Strategic Plan 2015 – 2020: Traveller Health/Social Inclusion Unit, HSE

